

Gas Registry Statistics - October 2011

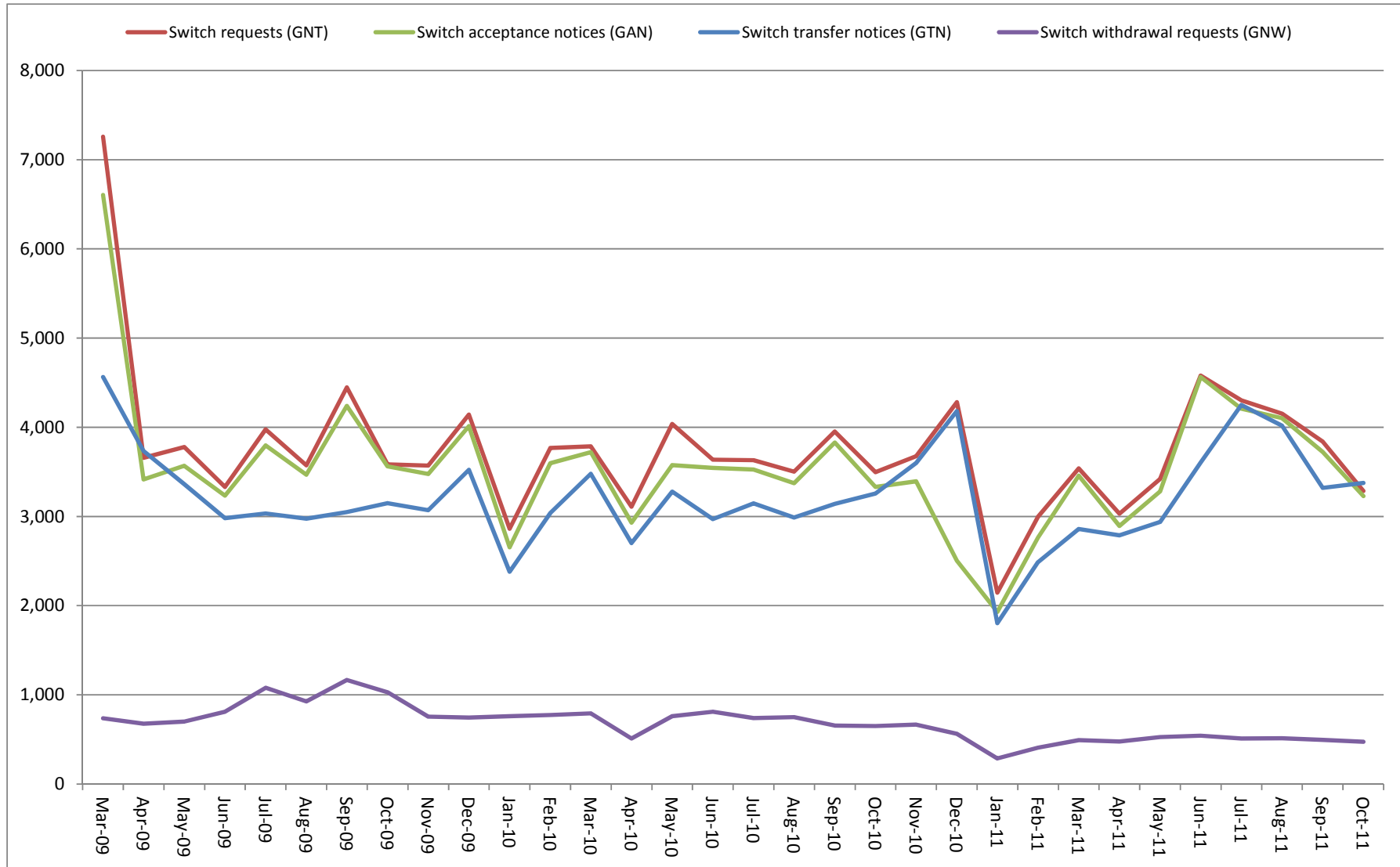
The following report provides statistics and charts illustrating gas registry usage, switching volumes and breakdowns of retailer, distributor and meter owner market shares. The information is provided in accordance with version 1.2 of the Determinations by the Industry Body (Gas Industry Co) under the Gas (Switching Arrangements) Rules 2008, dated 20 February 2009.

Summary registry statistics – October 2011

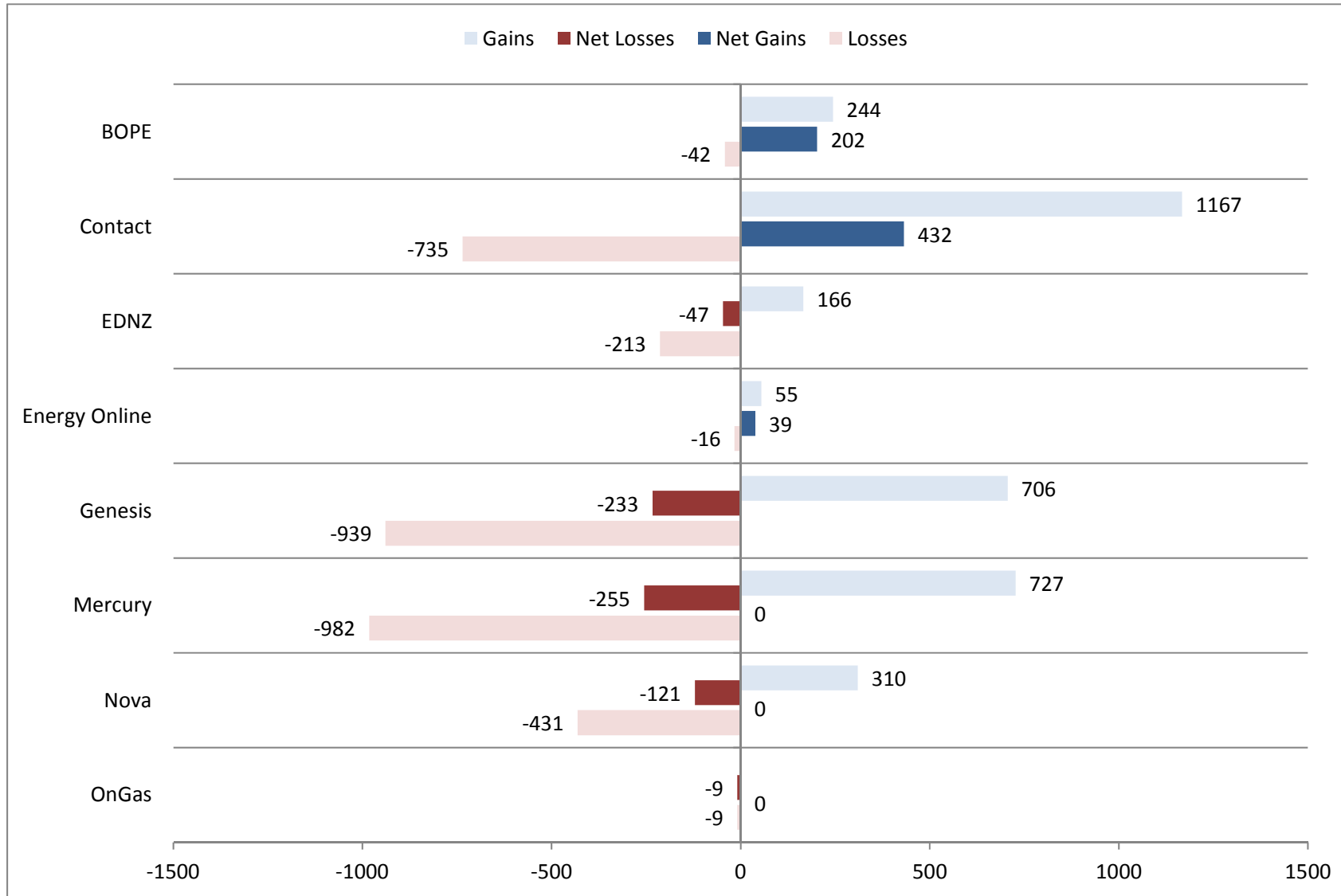
ICP enquiries processed in month (Online)	21,678
ICP enquiries processed in month (Offline)	13,050,002
Total ICP enquiries processed in month	13,071,680
ICPs added to the registry in month	365
ICPs changed in month	75,495
ICPs decommissioned in month	33
Valid standard switch requests (GNT-S) received in month	1,749
Valid move switch requests (GNT-SM) received in month	1,536
Valid switch requests (GNT) received in month	3,285
Valid switch acceptance notices (GAN) received in month	3,227
Valid switch transfer notices (GTN) received in month	3,376
Valid switch withdrawal requests (GNW) received in month	473
Valid switch withdrawal acceptances (GAW-A) received in month	474
Valid switch withdrawal rejections (GAW-R) received in month	12
Valid switch reading renegotiation requests (GNC) received in month	43
Valid switch reading renegotiation acceptances (GAC-A) received in month	41
Valid switch reading renegotiation rejections (GAC-R) received in month	1

Note: A switch transfer notice (GTN) is the last stage required to complete the switching process. This statistic indicates the number of switches completed in the month.

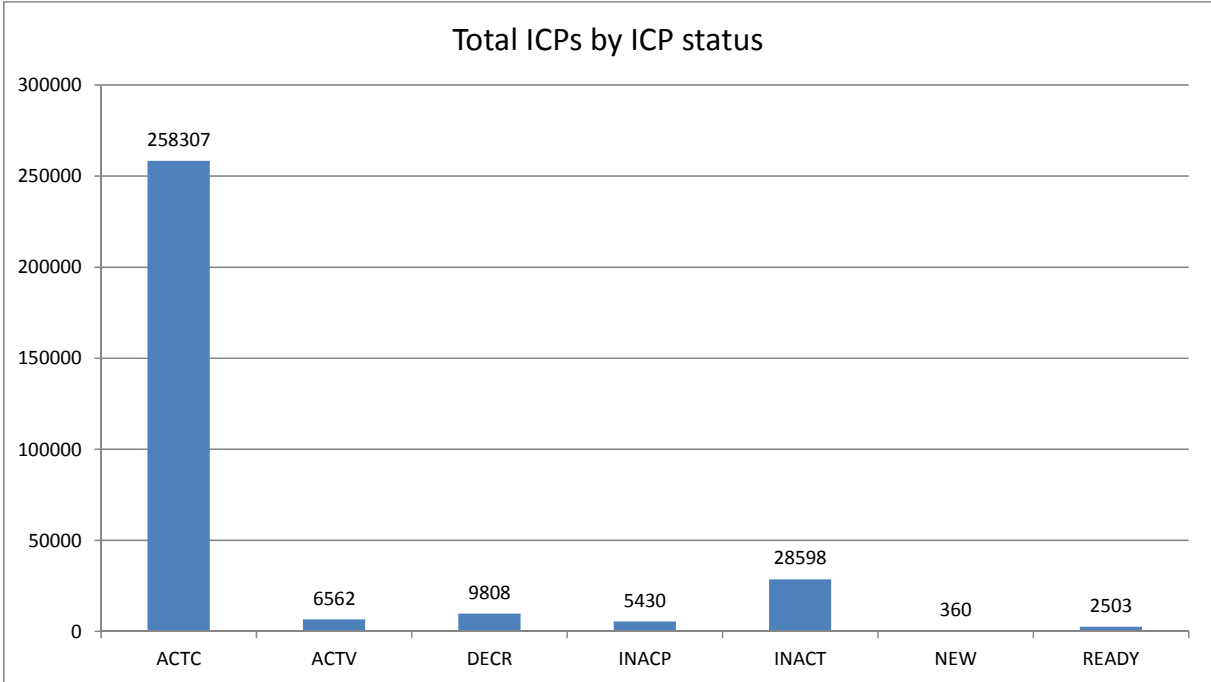
Switching activity – historical



Switching gains and losses – October 2011



ICPs by status – October 2011



Installation control points (ICPs) are the record of customer installations in the gas registry. The meaning of the ICP status codes are as follows:

ACTC—Active contracted (gas is able to flow and the customer has a contract with a retailer)

ACTV—Active vacant (gas is able to flow and the premises is vacant)

DECR—Decommissioned

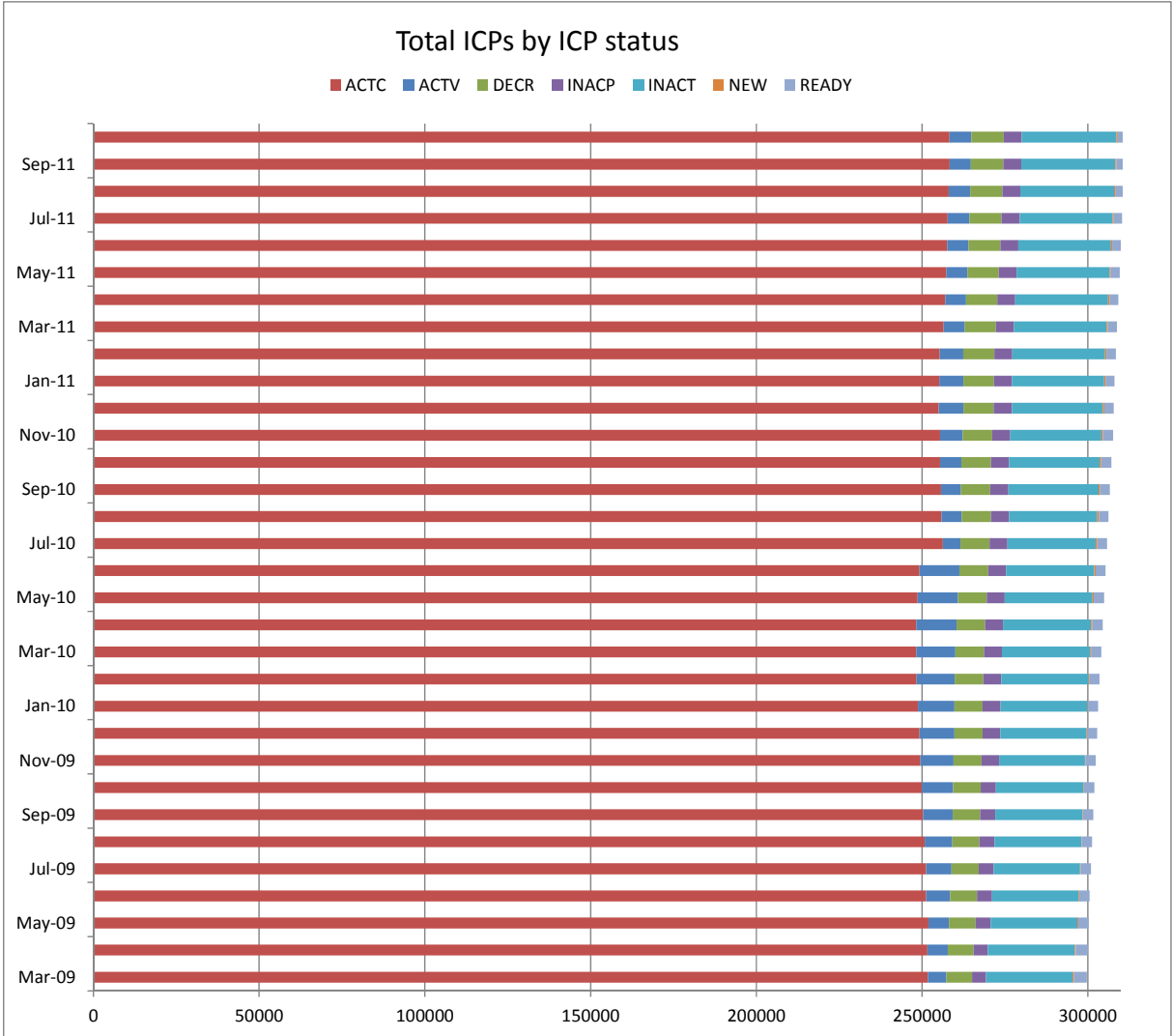
INACP—Inactive permanent (gas unable to flow due to a permanent disconnection)

INACT—Gas unable to flow due to a temporary disconnection

NEW—Newly created ICP, gas not yet able to flow

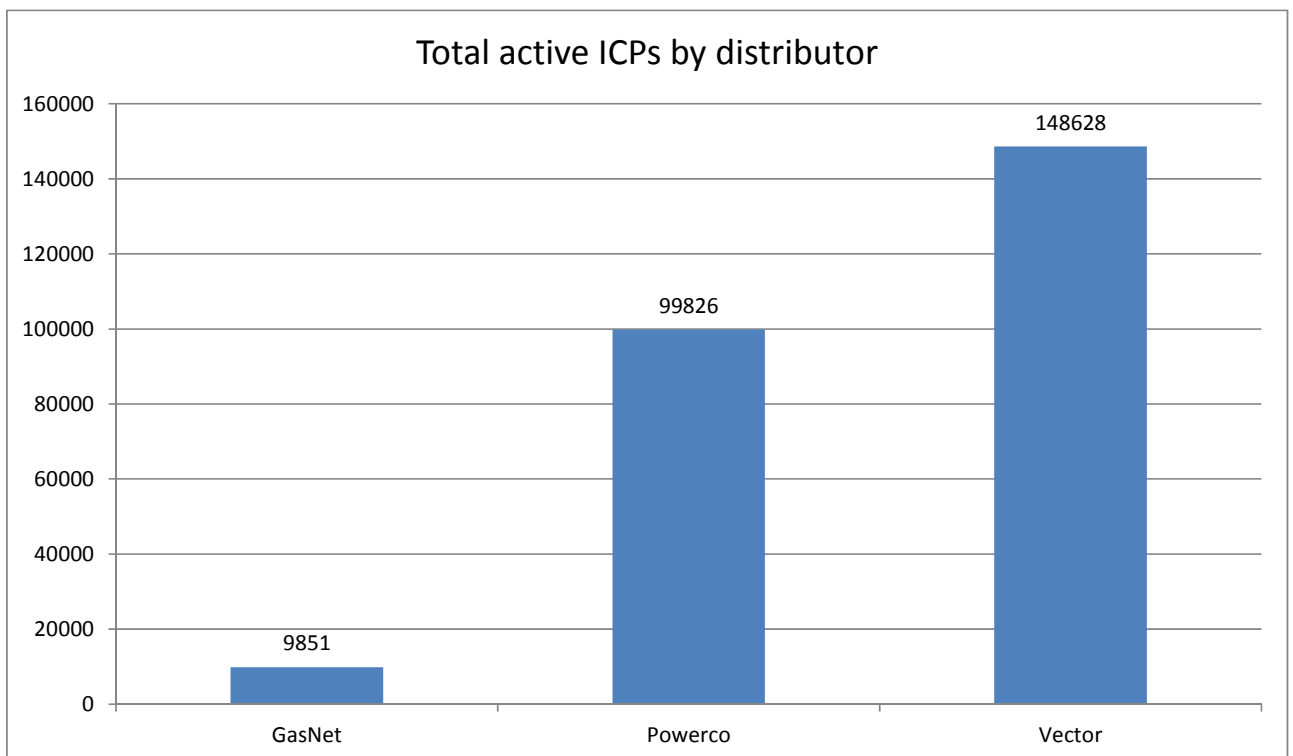
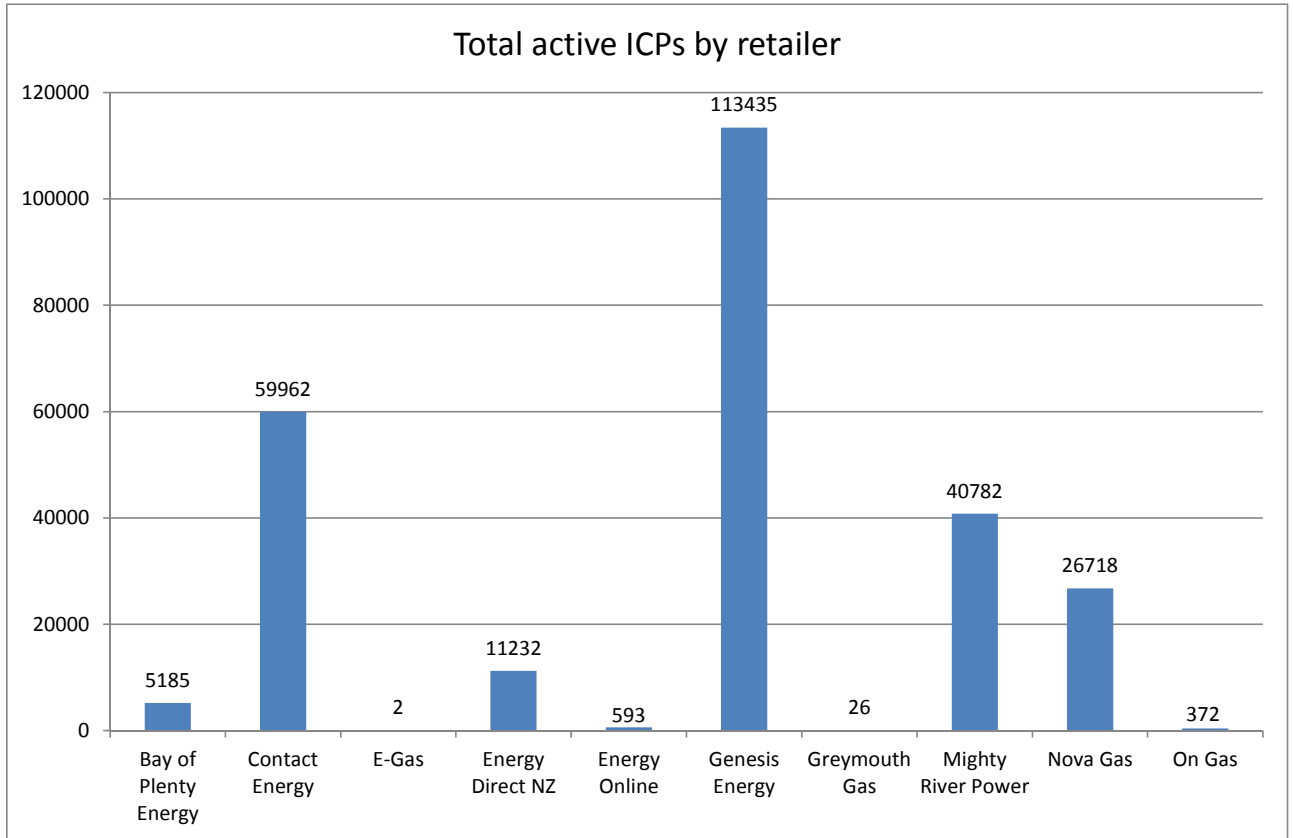
READY—New ICP, gas able to flow, awaiting uplift by retailer

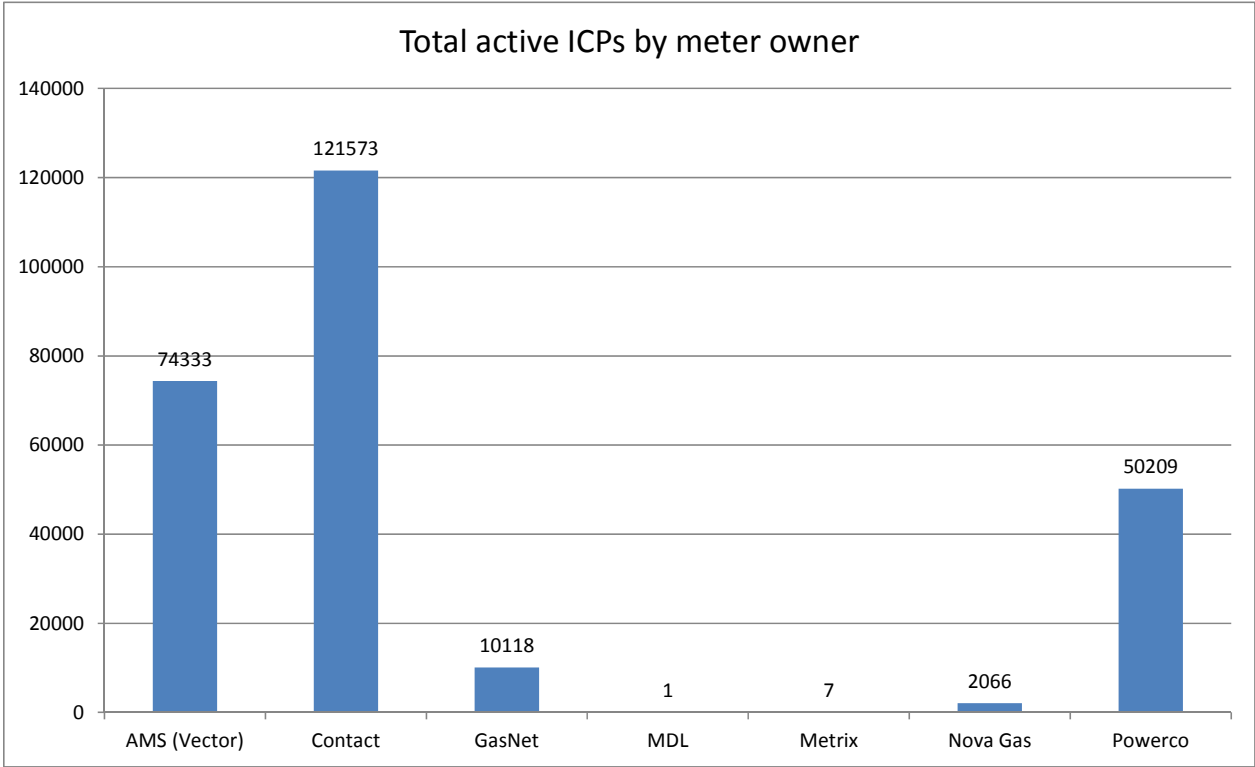
ICPs by status – historical



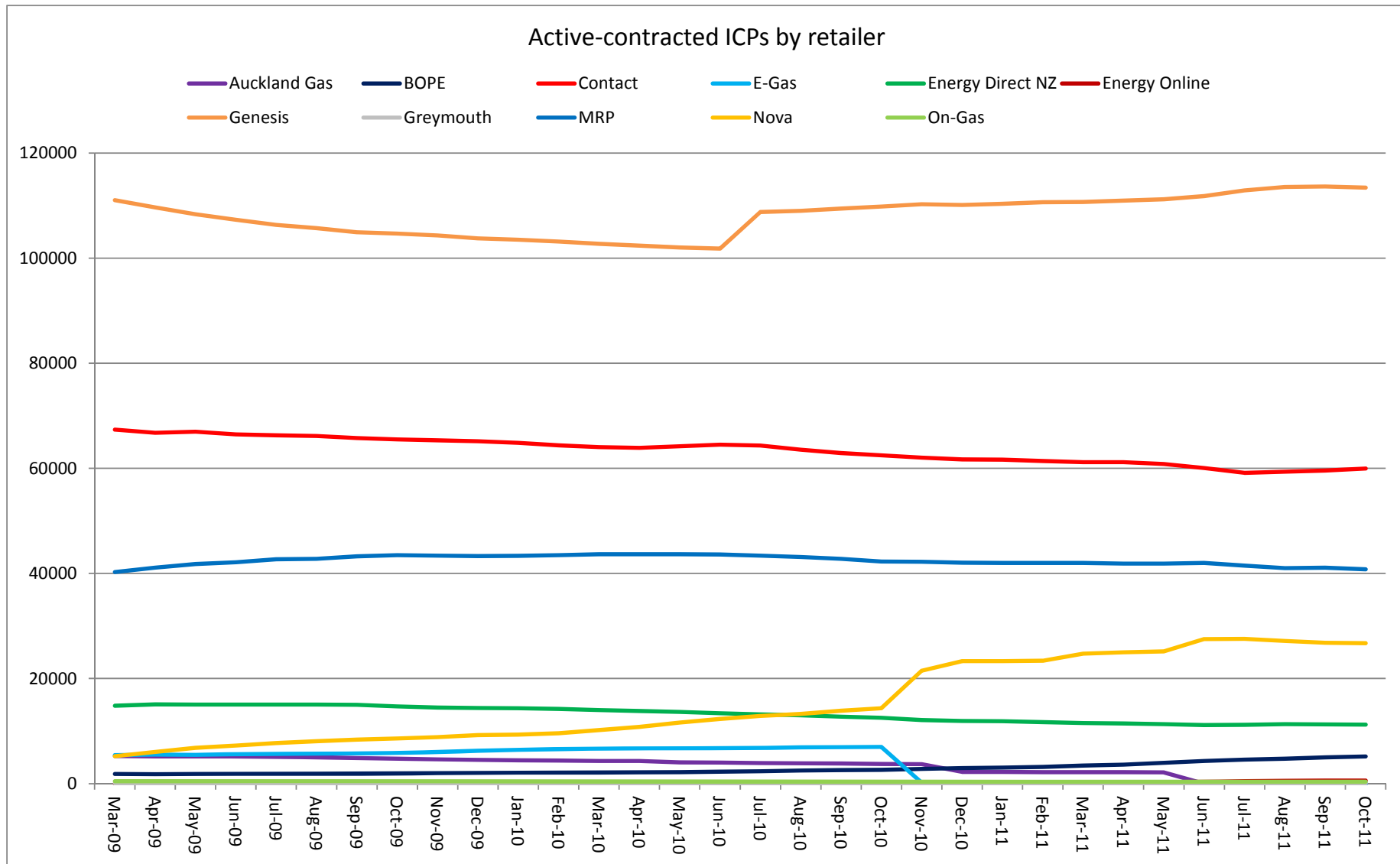
Market shares – October 2011

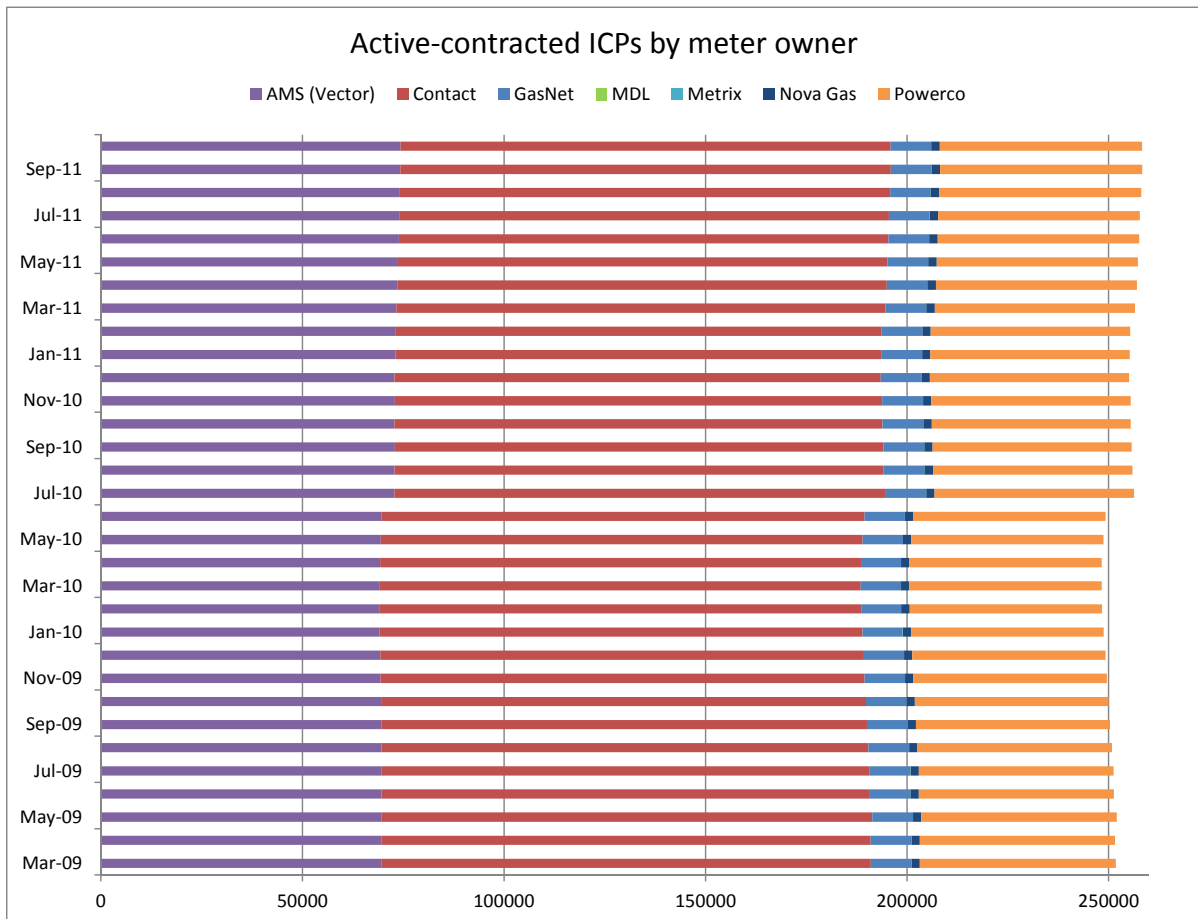
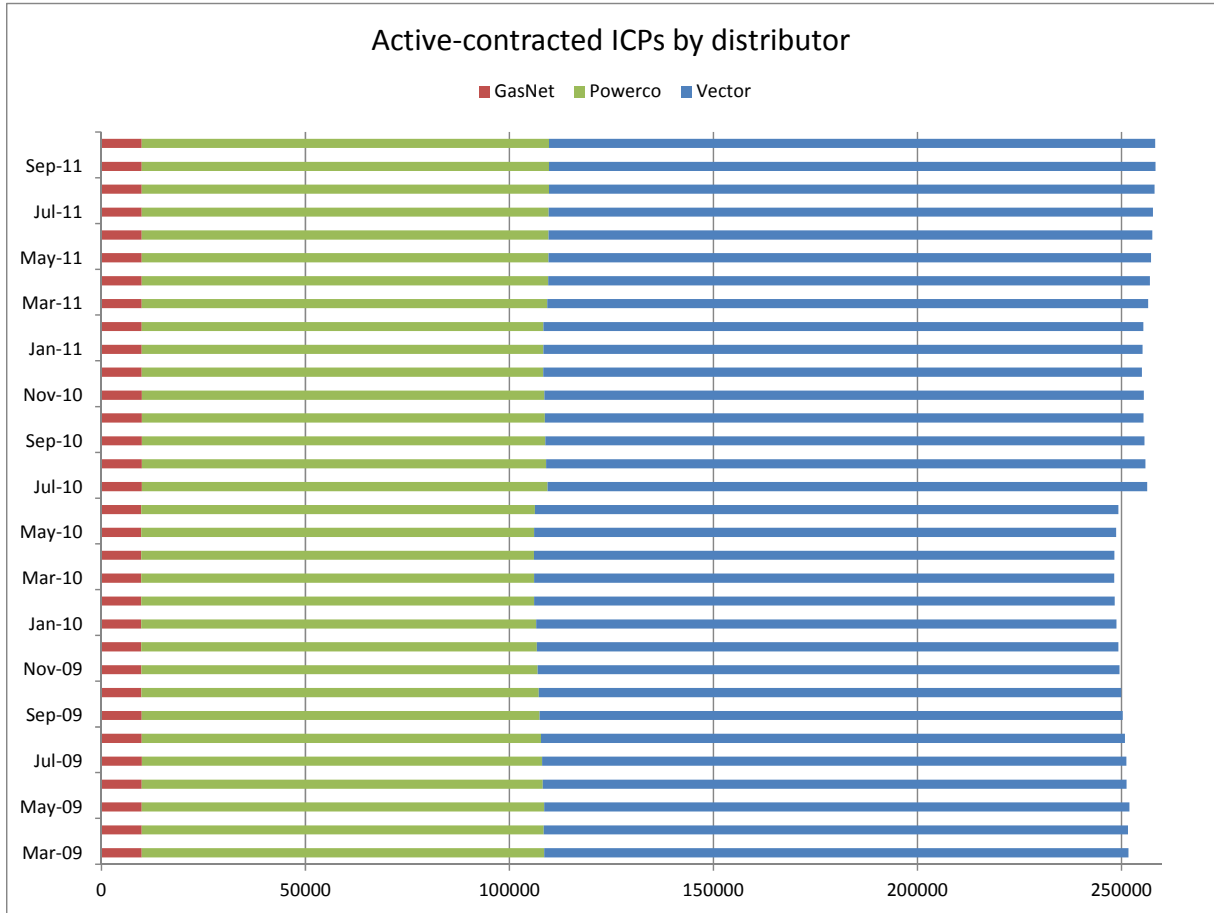
The following charts show the distribution of active-contracted ICPs by retailer, distribution company and meter owner respectively.





Market shares – historical





Active-contracted ICPs by gas gate and retailer – October 2011

The following table shows the distribution of active-contracted ICPs by gas gate, and the distribution by retailer at each gas gate.

The responsible retailer codes are as follows:

BOPE—Bay of Plenty Energy

CTCT—Contact Energy

EDNZ—Energy Direct NZ (Wanganui Gas)

EGLT—E-Gas Ltd

GEND—Genesis Energy

GENG—Genesis Energy

GEOL—Energy Online

GMTH—Greymouth Gas

GNGC—OnGas (Vector)

GNVG—Nova Gas

MEEN—Mighty River Power

The gas gate names associated with the codes used in the table can be found here:

http://gasindustry.co.nz/sites/default/files/u14/All_Gas_Gates_301009.pdf

Gas Gate	BOPE	CTCT	EDNZ	EGLT	GEND	GENG	GEOL	GMTH	GNGC	GNVG	MEEN	Total
ALF15501									1			1
ASH34301		50	24			63				55	22	214
BAL08201								1				1
BAL09626								1				1
BEL24510		1681	248		2	17268	18		9	1783	1582	22591
BMC17901		505	4		1	409	3		4	209	640	1775
BRO36301									1			1
CAM17201		95				1522				43	167	1827
DAN05001		72				10			1	22		105
DRU15101		13				4			1	8	3	29
DRU15102		17				13			4	6	19	59
EGC30701		1										1
EGC30702	2	1				2				1		6
ELM12301	36	39	31			219			3	4		332
FLD03001		386	197		2	440			1	603	87	1716
FLH21901		2	3									5
FOX22101		161	8		1	22	8		1	90	8	299
GIS07810		891	237		3	1985			3	157		3276
GLB03401									1			1
HAR11801						1			4			5
HEN74101		7156	9	1	4	6243	90	1	15	1252	6472	21243
HPS02993					1							1
HRU16101					1	1				2		4

Gas Gate	BOPE	CTCT	EDNZ	EGLT	GEND	GENG	GEOL	GMTH	GNGC	GNVG	MEEN	Total
HST05210		2513	272	1	2	439	174		6	978		4385
HTK08301		31	2			240				2	14	289
HTL16601		3			1	91			3	5	3	106
HTV11301	17	1832	4		3	22444			51	488	2025	26864
HUN15301			1						2	1		4
HWA20801	134	428	314			1830			4	56		2766
IGW11901	136	50	71			297				9	3	566
KAP12901		2				2						4
KAW04405	131	8	1			106				5		251
KAW04410									1			1
KAW04411									1			1
KIG16801		4								1	1	6
KIH19101		54	1		1	1231				36	37	1360
KIN02601		1				3			2		1	7
KIN04310									1			1
KIW34201								1				1
KIW34202						1			1			2
KKI23701		2								1		3
KPA12401	4	5	5			44						58
KRG24101		1	1							2		4
KTK23901									1			1
KUK22401		6				19				4		29
KUR33601									1			1

Gas Gate	BOPE	CTCT	EDNZ	EGLT	GEND	GENG	GEOL	GMTH	GNGC	GNVG	MEEN	Total
LAB20201		9	63			41				6	1	120
LCF20010		1										1
LNB24301		71	27		1	100			4	80	17	300
LVN24401		1620	99			350	112		5	600	69	2855
MGK05401								1				1
MMU08001	426	161	2		4	3137		1	3	146	312	4192
MNA23402	13	33	35			154				4		239
MNG34001									1			1
MRV16301		1										1
MRV16302		48				555				23	65	691
MSD01801					1							1
MSD01802									1			1
MTG17301		2				32					2	36
MTN23801		58	227			149	1		2	13	1	451
MTP20601		1				5						6
MUT19001									1			1
NGW14501		12				133				2	4	151
NPL12101	2493	807	1389		2	5958	5		6	200	23	10883
NPS00530		1										1
OAK18601						1						1
OKA13201	4	6	7			41				1		59
OKS32801										1	1	2
OKU16701	48	22	37			121				2		230

Gas Gate	BOPE	CTCT	EDNZ	EGLT	GEND	GENG	GEOL	GMTH	GNGC	GNVG	MEEN	Total
OPK13001	13	21	16			125						175
OPO32001	50	4			1	54				3		112
ORD24701		1	1							1		3
OTA22601		58	4			291				25	5	383
OTB00301		1										1
OTO14101		4				160				15		179
PAH23101						20						20
PAH23201						1				1		2
		8				2				2	5	17
PAP06603		30			1	26				5	49	111
PAP06610		4266	7		3	861	12	1	54	701	3201	9106
PAU20101		547	54			2392			2	193	69	3257
PGH15901		1										1
PGU13101						14						14
PHT04901		39				37			1	11		88
PIR31101		2				44					3	49
PLN24201		3176	1146		1	3952	20		20	5919	807	15041
PPA33201		1				13				1		15
PTA20901	15	17	22			129			2	3		188
PTR32601	5	13	1			294			1	15	12	341
PUK04201		68			1	23	2			41	51	186
	2	1										3
RAG33401										1		1

Gas Gate	BOPE	CTCT	EDNZ	EGLT	GEND	GENG	GEOL	GMTH	GNGC	GNVG	MEEN	Total
RAM15201		1							2			3
ROT08101	257	309	1			2701			12	209	425	3914
RPR30801	1	2				19				1	1	24
STR10201	139	66	59		1	612				20		897
TAC31001									1			1
TAT16401								1				1
TAU07001	108	301	3			1334			1	156	152	2055
TAW31004		1				4				1		6
TCC00201		1										1
THO22701		2				11				2		15
TIR33501		1										1
TIR33502	2	3				52				11	3	71
TKN17001		1				142			1	9		153
TKP05101										1		1
TKR19701	4	61	2			865			1	51	36	1020
TKS17401		2	1			17		1	1	1		23
TPK33301	29	9	1		1	522				23	25	610
TRC02003		1										1
TRG07701	605	150	3			3124			6	221	257	4366
TTK30601	1	1				3						5
TUK06501		5				1	1		2	2	1	12
TWA35610		8046	412		8	10518	35		27	7040	2480	28566
WAG21501		492	5877			2722	6	2	2	147	26	9274

Gas Gate	BOPE	CTCT	EDNZ	EGLT	GEND	GENG	GEOL	GMTH	GNGC	GNVG	MEEN	Total
WAK22801		201	22			1184				64	9	1480
WEL18301		2				19				3	2	26
WHG07501		109	3			913			6	98	87	1216
WHK32101	235	13				150			3	34	11	446
WKE19201									1			1
WRK18901		36				143			2	17	56	254
WST03610		21856	19		8	7457	94	14	72	4252	20169	53941
WTA16501		1	1			37		1		3	1	44
WTG06910		544	85		1	4562	9		3	397	489	6090
WTK33901		394				1323				45	625	2387
WTK33902		160				207	2			45	143	557
WTR12001	275	68	173			568	1		2	27	3	1117
WTT20301									1			1
WVY23601		2			1	4						7
Total	5185	59962	11232	2	57	113378	593	26	372	26718	40782	258307