

Gas Registry Statistics - December 2011

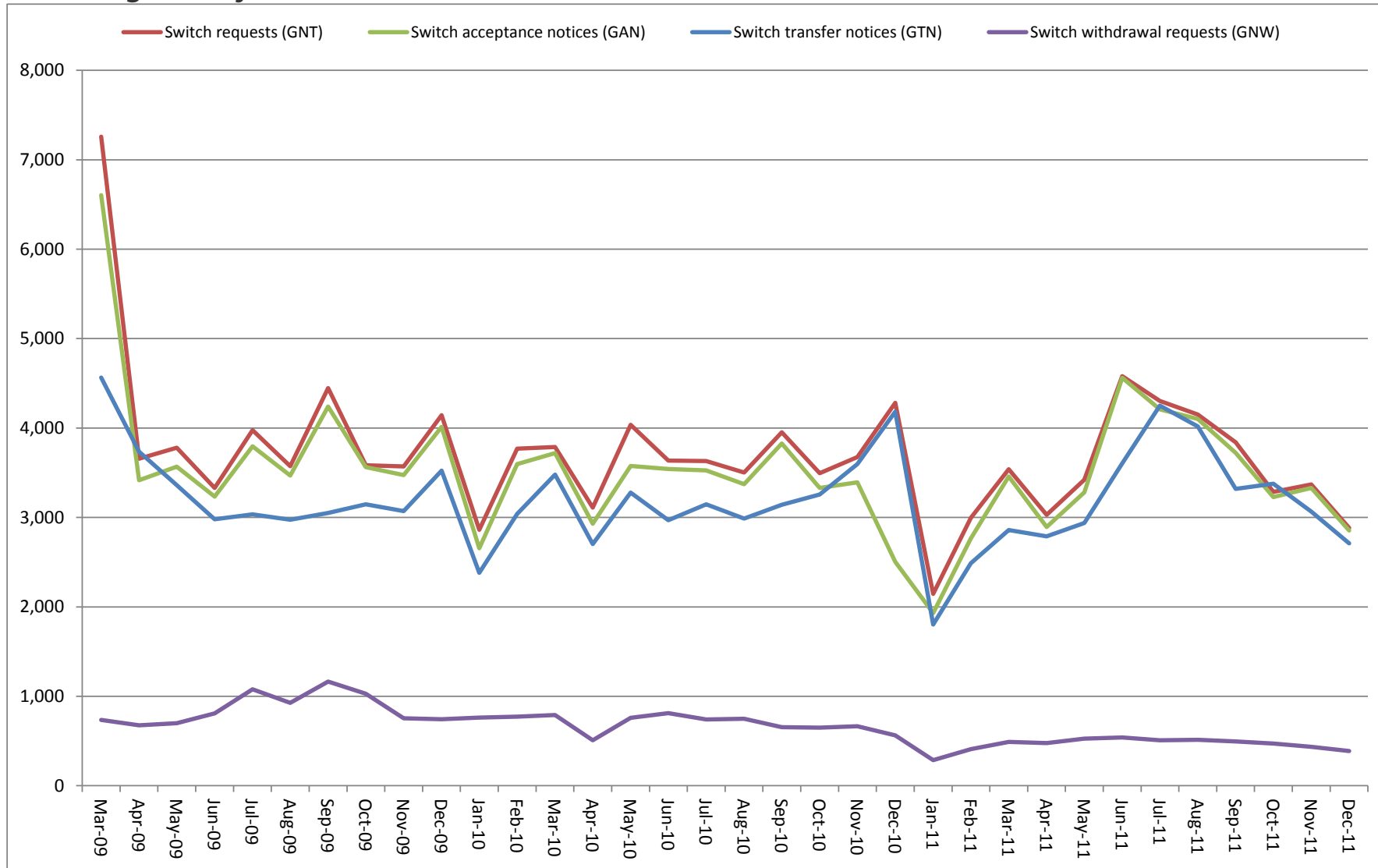
The following report provides statistics and charts illustrating gas registry usage, switching volumes and breakdowns of retailer, distributor and meter owner market shares. The information is provided in accordance with version 1.2 of the Determinations by the Industry Body (Gas Industry Co) under the Gas (Switching Arrangements) Rules 2008, dated 20 February 2009.

Summary registry statistics – December 2011

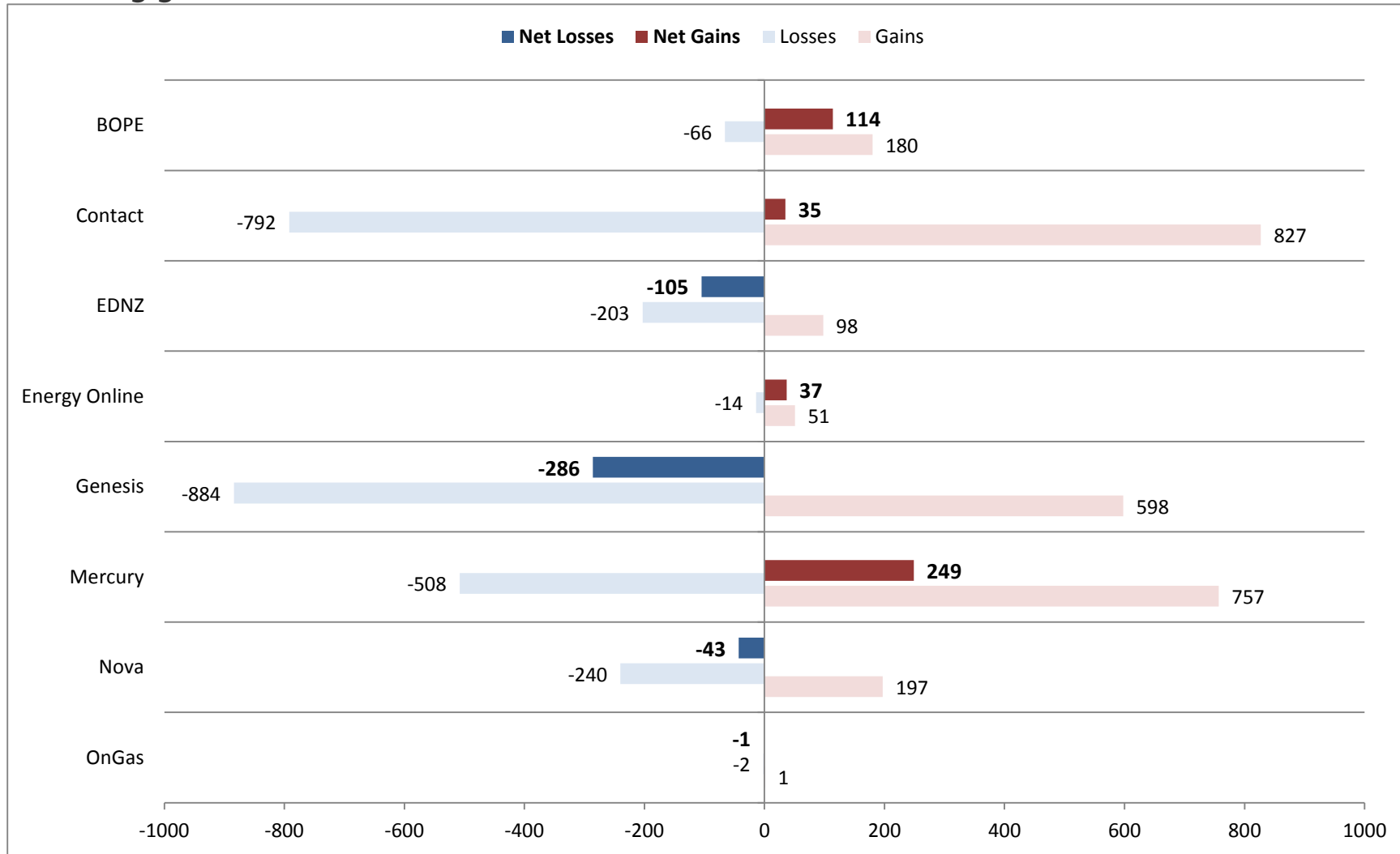
ICP enquiries processed in month (Online)	16,980
ICP enquiries processed in month (Offline)	11,235,108
Total ICP enquiries processed in month	11,252,088
ICPs added to the registry in month	288
ICPs changed in month	810
ICPs decommissioned in month	35
Valid standard switch requests (GNT-S) received in month	1,266
Valid move switch requests (GNT-SM) received in month	1,617
Valid switch requests (GNT) received in month	2,883
Valid switch acceptance notices (GAN) received in month	2,853
Valid switch transfer notices (GTN) received in month	2,709
Valid switch withdrawal requests (GNW) received in month	388
Valid switch withdrawal acceptances (GAW-A) received in month	402
Valid switch withdrawal rejections (GAW-R) received in month	12
Valid switch reading renegotiation requests (GNC) received in month	59
Valid switch reading renegotiation acceptances (GAC-A) received in month	60
Valid switch reading renegotiation rejections (GAC-R) received in month	1

Note: A switch transfer notice (GTN) is the last stage required to complete the switching process. This statistic indicates the number of switches completed in the month.

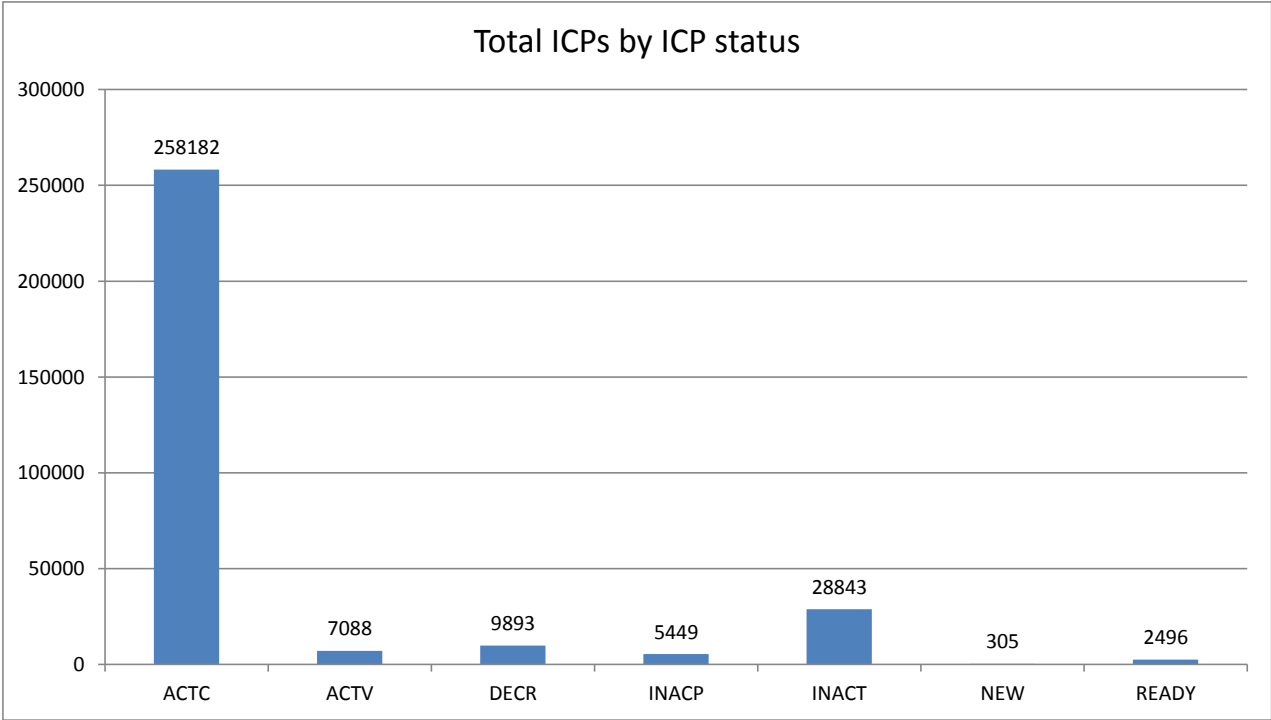
Switching activity – historical



Switching gains and losses – December 2011



ICPs by status – December 2011



Installation control points (ICPs) are the record of customer installations in the gas registry. The meaning of the ICP status codes are as follows:

ACTC—Active contracted (gas is able to flow and the customer has a contract with a retailer)

ACTV—Active vacant (gas is able to flow and the premises is vacant)

DECR—Decommissioned

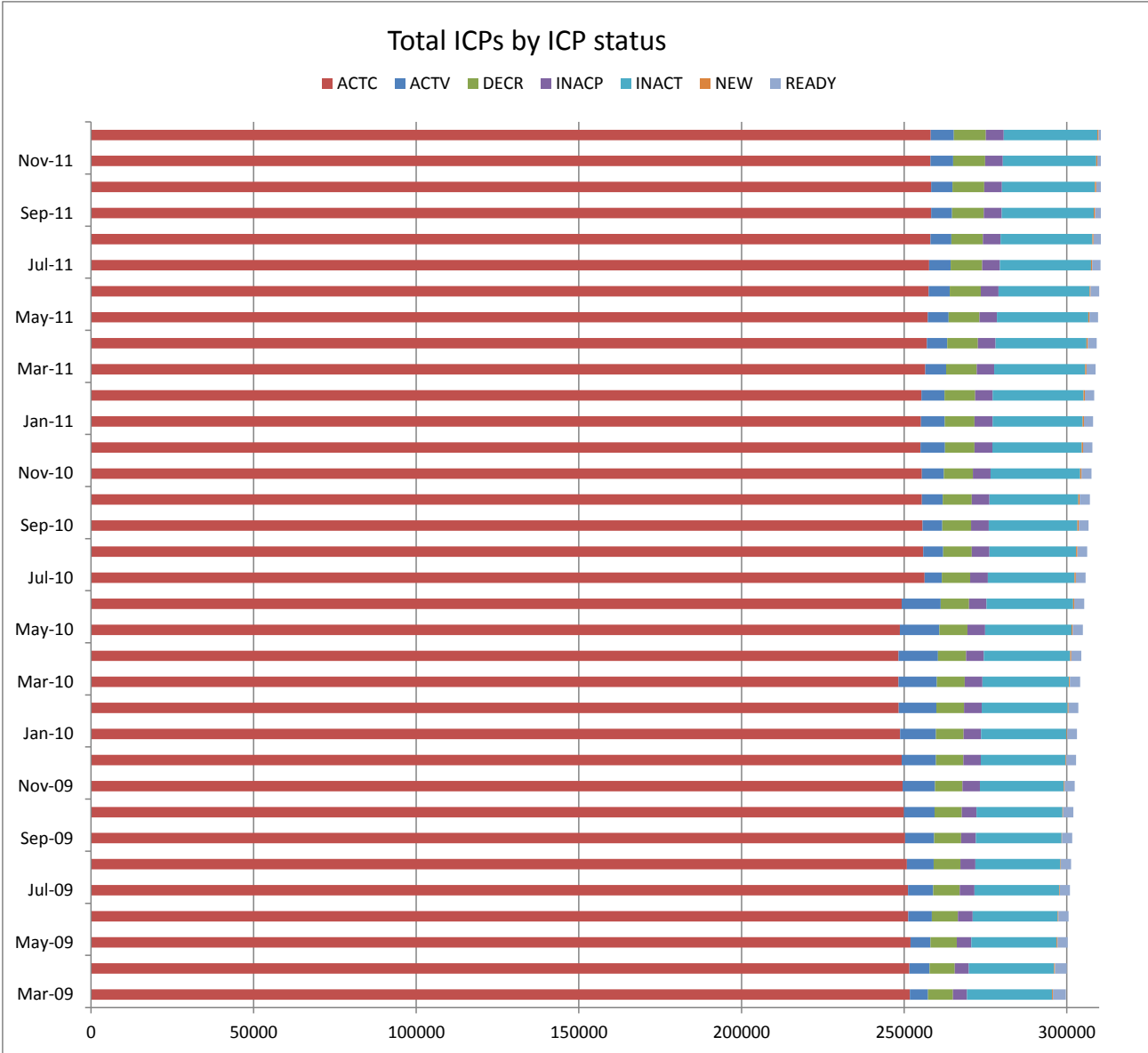
INACP—Inactive permanent (gas unable to flow due to a permanent disconnection)

INACT—Gas unable to flow due to a temporary disconnection

NEW—Newly created ICP, gas not yet able to flow

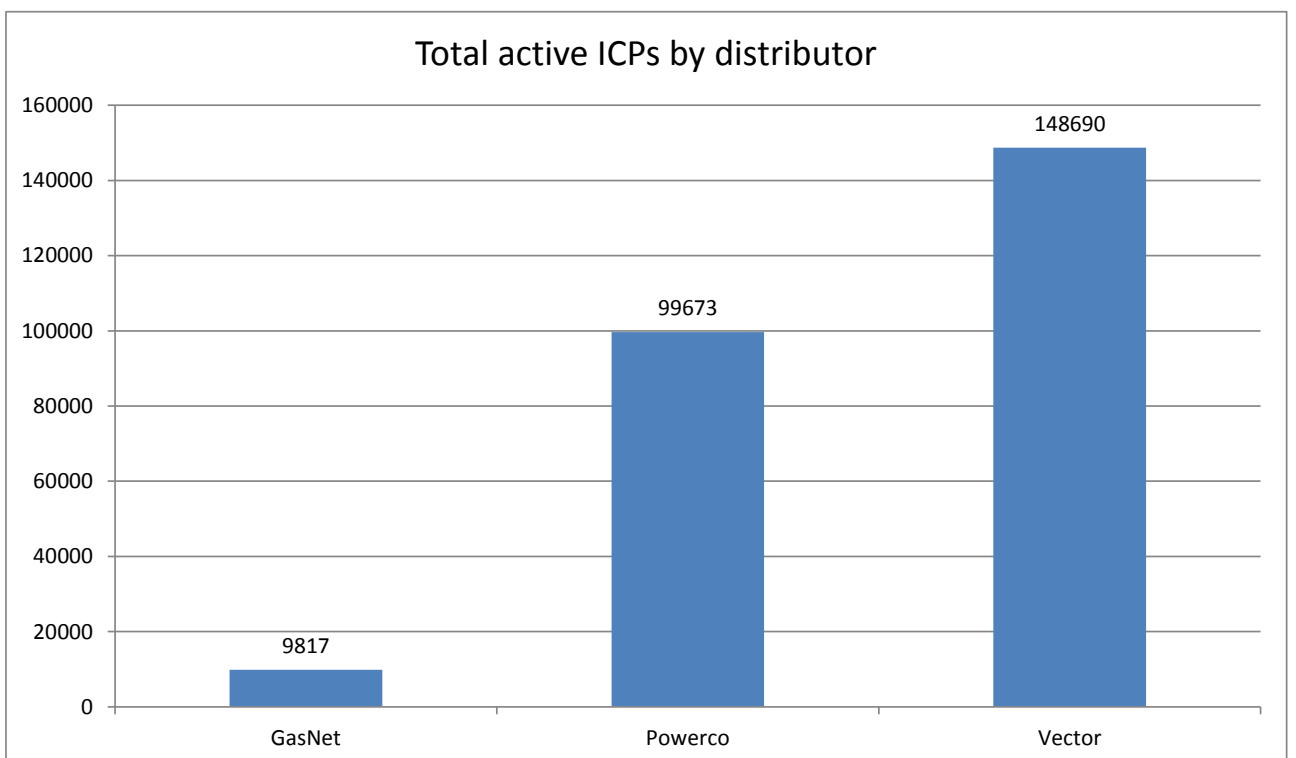
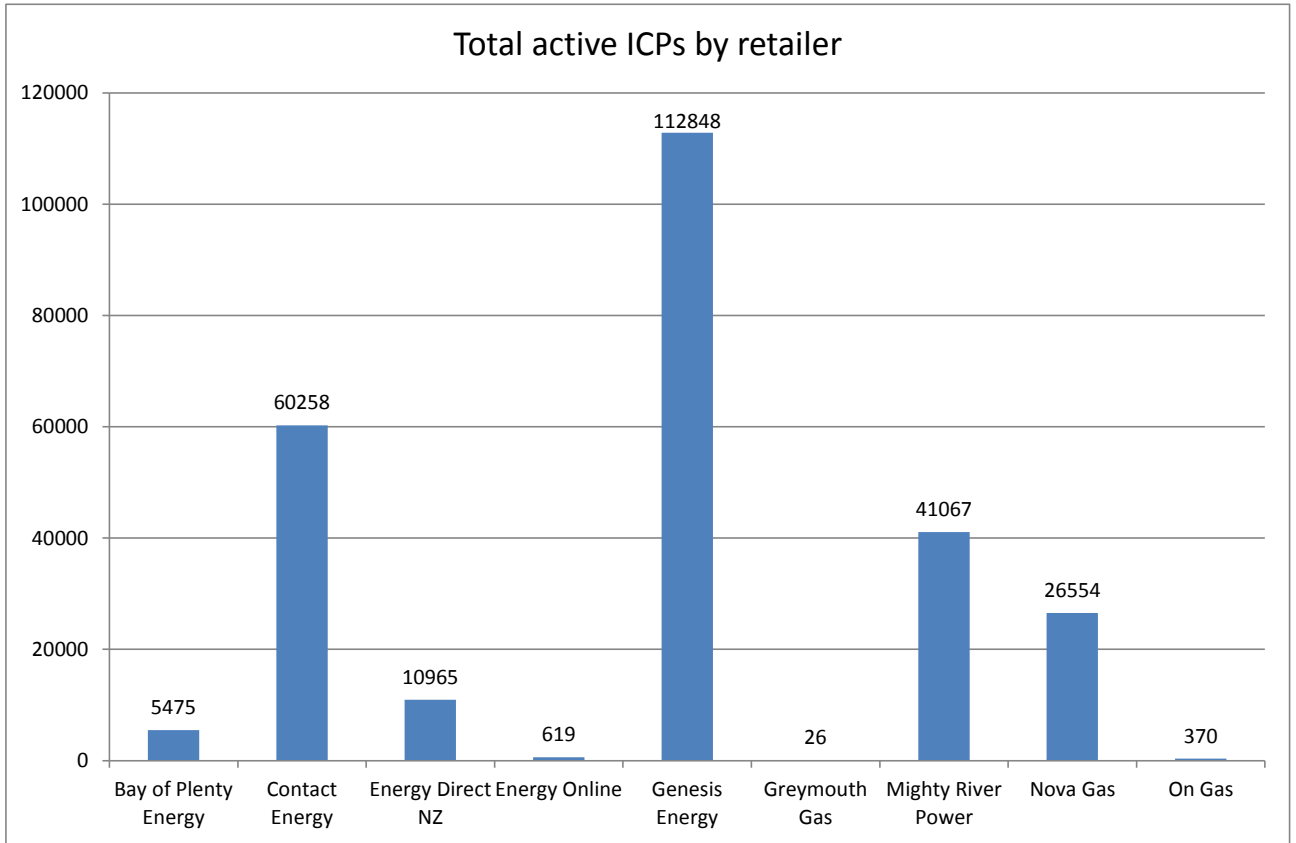
READY—New ICP, gas able to flow, awaiting uplift by retailer

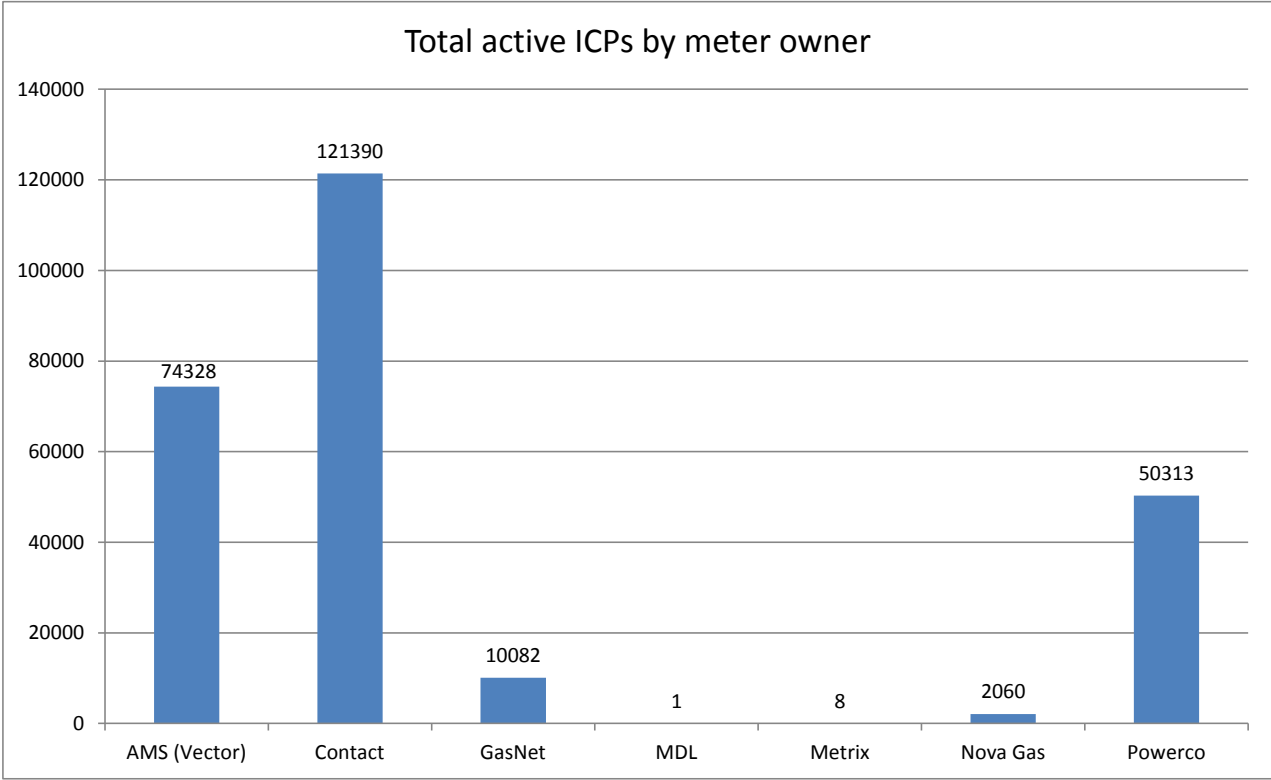
ICPs by status – historical



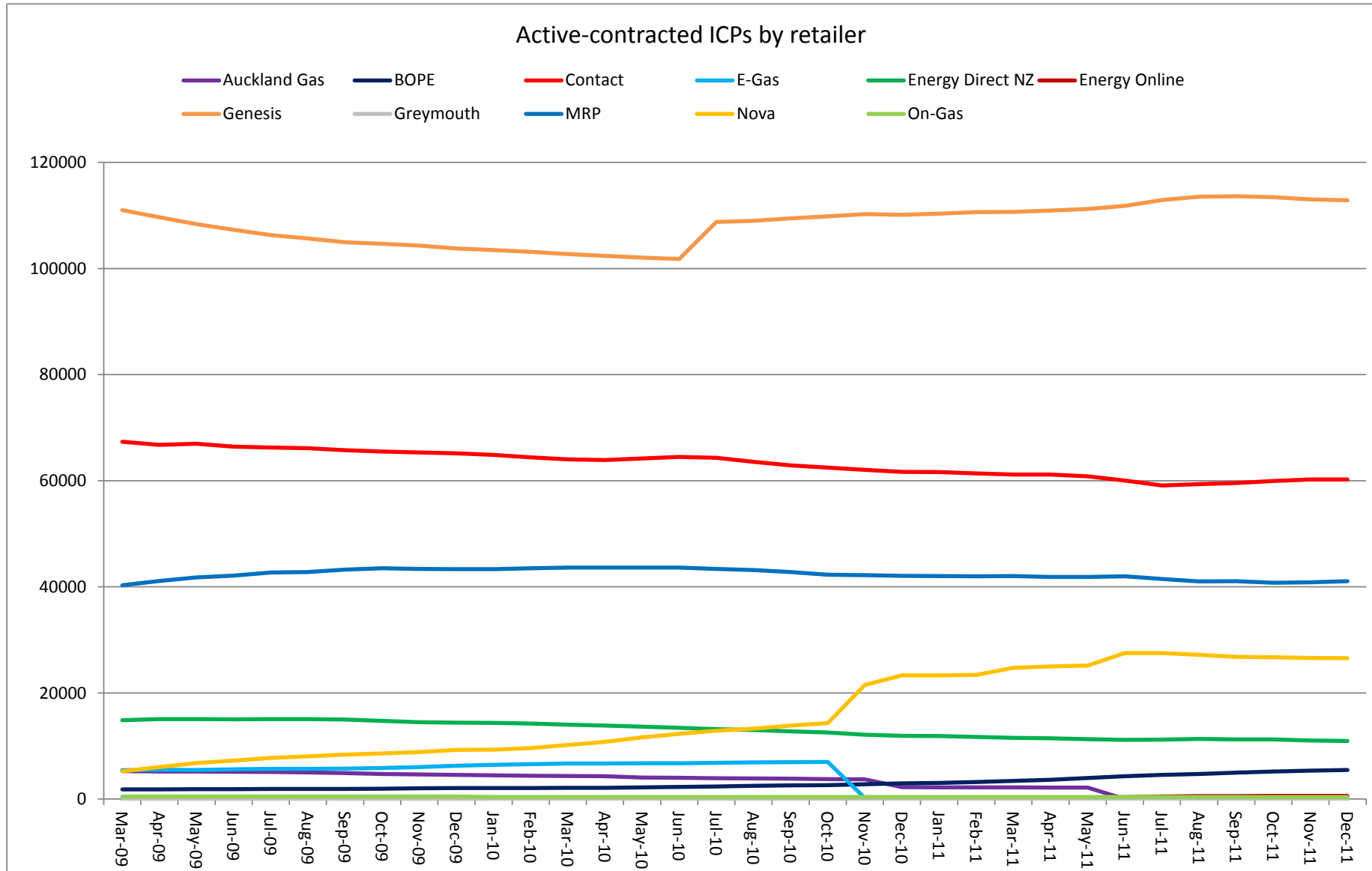
Market shares – December 2011

The following charts show the distribution of active-contracted ICPs by retailer, distribution company and meter owner respectively.

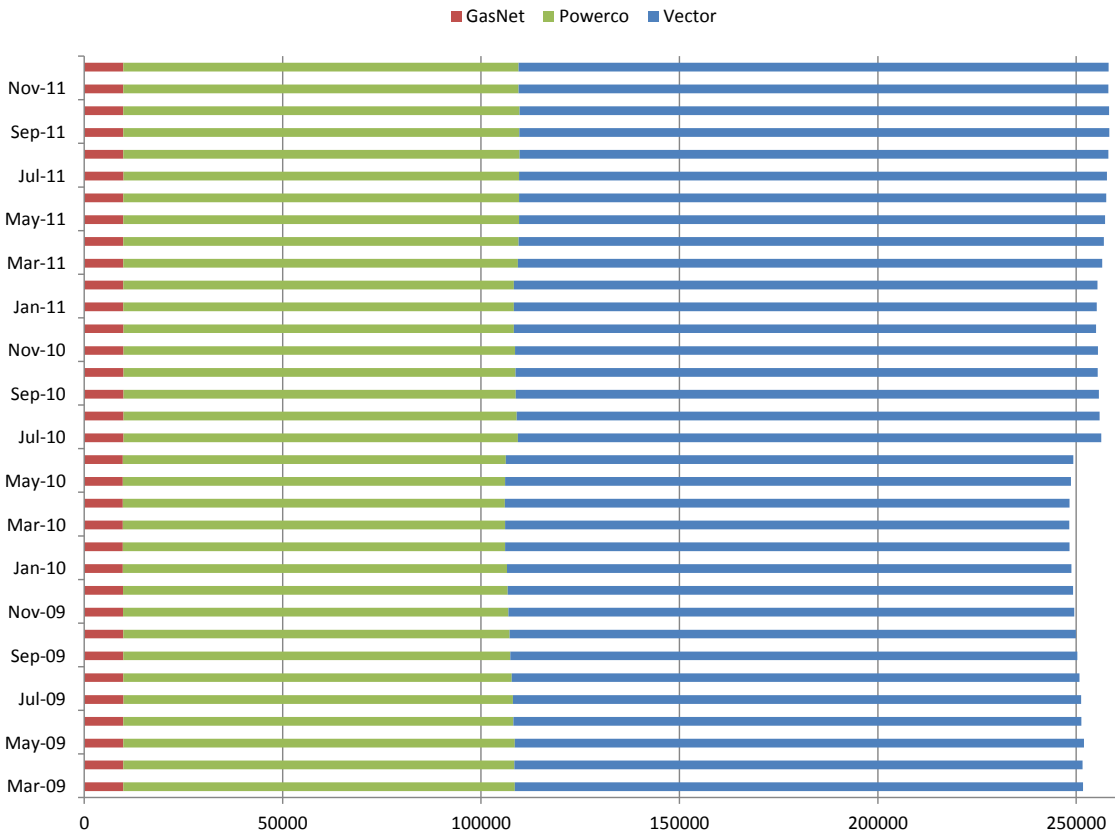




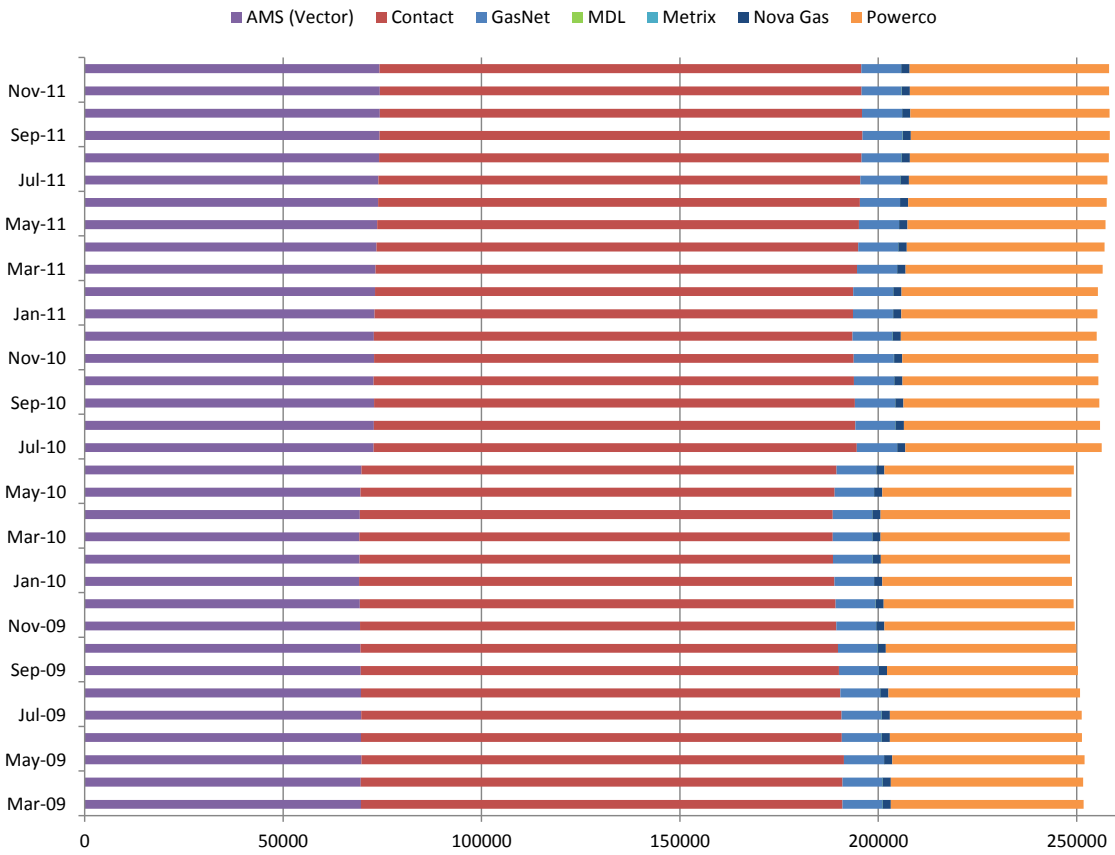
Market shares – historical



Active-contracted ICPs by distributor



Active-contracted ICPs by meter owner



Active-contracted ICPs by gas gate and retailer – December 2011

The following table shows the distribution of active-contracted ICPs by gas gate, and the distribution by retailer at each gas gate.

The responsible retailer codes are as follows:

BOPE—Bay of Plenty Energy

CTCT—Contact Energy

EDNZ—Energy Direct NZ (Wanganui Gas)

GEND—Genesis Energy (TOU)

GENG—Genesis Energy

GEOL—Energy Online

GMTH—Greymouth Gas

GNGC—OnGas (Vector)

GNVG—Nova Energy

MEEN—Mercury Energy (Mighty River Power)

The gas gate names associated with the codes used in the table can be found here:

http://gasindustry.co.nz/sites/default/files/u14/All_Gas_Gates_301009.pdf

Gas Gate	BOPE	CTCT	EDNZ	GEND	GENG	GEOL	GMTH	GNGC	GNVG	MEEN	Total
ALF15501								1			1
ASH34301		51	24		63				56	21	215
BAL08201							1				1
BAL09626							1				1
BEL24510		1743	277	2	17206	22		9	1728	1559	22546
BMC17901		518	4	1	414	3		4	207	636	1787
BRO36301								1			1
CAM17201		109			1513				43	163	1828
DAN05001		74			9			1	22		106
DRU15101		13			4			1	8	2	28
DRU15102		20			13			4	6	18	61
EGC30701		1									1
EGC30702	2	1			2				1		6
ELM12301	45	36	32		214			3	4		334
FLD03001		382	191	2	441	1		1	594	93	1705
FLH21901		2	3								5
FOX22101		157	8	1	21	9		1	89	8	294
GIS07810		888	241	3	1976			3	152		3263
GLB03401								1			1
HAR11801					1			4			5
HEN74101		7246	9	4	6282	93	1	15	1252	6420	21322
HPS02993				1							1
HRU16101				1	1				2		4
HST05210		2507	271	2	447	173		6	968		4374

Gas Gate	BOPE	CTCT	EDNZ	GEND	GENG	GEOL	GMTH	GNGC	GNVG	MEEN	Total
HTK08301		39	2		282				2	17	342
HTL16601		3		1	91			3	5	3	106
HTV11301	18	1885	4	3	22244			51	481	1984	26670
HUN15301			1					2	1		4
HWA20801	155	376	264		1760			4	54	138	2751
IGW11901	141	39	62		299				9	19	569
KAP12901		2			2						4
KAW04405	131	9	1		104				5		250
KAW04410								1			1
KAW04411								1			1
KIG16801		4							1	1	6
KIH19101		52	1	1	1224				36	38	1352
KIN02601		1			3			2		1	7
KIN04310								1			1
KIW34201							1				1
KIW34202					1			1			2
KKI23701		2							1		3
KPA12401	3	6	5		43						57
KRG24101		1	1						2		4
KTK23901								1			1
KUK22401		6			19				4		29
KUR33601								1			1
LAB20201		10	61		41				6		118
LCF20010		1									1

Gas Gate	BOPE	CTCT	EDNZ	GEND	GENG	GEOL	GMTH	GNGC	GNVG	MEEN	Total
LNB24301		71	27	1	99			4	76	18	296
LVN24401		1606	98		359	115		5	583	69	2835
MGK05401							1				1
MMU08001	432	172	2	4	3133		1	3	143	314	4204
MNA23402	15	29	25		152				4	14	239
MNG34001								1			1
MRV16301		1									1
MRV16302		50			551				23	65	689
MSD01801				1							1
MSD01802								1			1
MTG17301		2			31					2	35
MTN23801		58	227		150	1		2	14	1	453
MTP20601		1			5						6
MUT19001								1			1
NGW14501		14			129				2	3	148
NPL12101	2627	760	1209	2	5760	6		6	191	329	10890
NPS00530		1									1
OAK18601					1						1
OKA13201	5	5	5		37				1	5	58
OKS32801									1	1	2
OKU16701	51	20	30		118				2	11	232
OPK13001	14	21	15		128					1	179
OPO32001	50	4		1	54				3		112
ORD24701		1	1						1		3

Gas Gate	BOPE	CTCT	EDNZ	GEND	GENG	GEOL	GMTH	GNGC	GNVG	MEEN	Total
OTA22601		56	5		293				26	5	385
OTB00301		1									1
OTO14101		4			161				14		179
PAH23101					21						21
PAH23201					2				1		3
PAP06604		46		1	30				4	57	138
PAP06610		4294	6	3	867	12	1	54	694	3231	9162
PAU20101		566	56		2375			2	193	70	3262
PGH15901		1									1
PGU13101					13						13
PHT04901		39			36			1	11		87
PIR31101		2			44					3	49
PLN24201		3180	1140	1	3911	20		20	5856	825	14953
PPA33201	1	3			14				1	2	21
PTA20901	15	10	21		131			2	3	5	187
PTR32601	4	15	1		294			1	15	12	342
PUK04201		69		1	22	3			38	50	183
PYE36601	2	1			1					1	5
RAG33401									1		1
RAM15201		1						2			3
ROT08101	312	311	1		2654			12	209	380	3879
RPR30801	1	2			18				1	1	23
STR10201	144	63	58	1	612				20	3	901
TAC31001								1			1

Gas Gate	BOPE	CTCT	EDNZ	GEND	GENG	GEOL	GMTH	GNGC	GNVG	MEEN	Total
TAT16401							1				1
TAU07001	136	313	3		1307			1	154	139	2053
TAW31004		1			6				1		8
TCC00201		1									1
THO22701		2			10				2	1	15
TIR33501		1									1
TIR33502	2	5			53				11	3	74
TKN17001		1			141			1	9		152
TKP05101									1		1
TKR19701	4	59	2		857			1	51	37	1011
TKS17401		2	1		17		1	1	1		23
TPK33301	29	9	1	1	518				24	24	606
TRC02003		1									1
TRG07701	609	161	2		3117			7	218	255	4369
TTK30601	1	1			3						5
TUK06501		5			1	1		2	2	1	12
TWA35610		8078	460	8	10563	34		27	6937	2437	28544
WAG21501		512	5821		2723	7	2	2	148	25	9240
WAK22801		212	23		1172				63	9	1479
WEL18301		2			19				3	2	26
WHG07501		108	3		911			6	97	84	1209
WHK32101	237	12			146			3	35	9	442
WKE19201								1			1
WRK18901		36			144			1	17	55	253

Gas Gate	BOPE	CTCT	EDNZ	GEND	GENG	GEOL	GMTH	GNGC	GNVG	MEEN	Total
WST03610		21878	18	8	7455	105	14	69	4401	20078	54026
WTA16501		1	1		38		1	1	3	1	46
WTG06910		554	100	1	4588	11		3	387	488	6132
WTK33901		414			1317				46	621	2398
WTK33902		159			211	2			45	146	563
WTR12001	289	64	141		544	1		2	28	53	1122
WTT20301								1			1
WVY23601		2		1	4						7
Grand Total	5475	60258	10965	57	112791	619	26	370	26554	41067	258182