

Gas Registry Statistics – August 2011

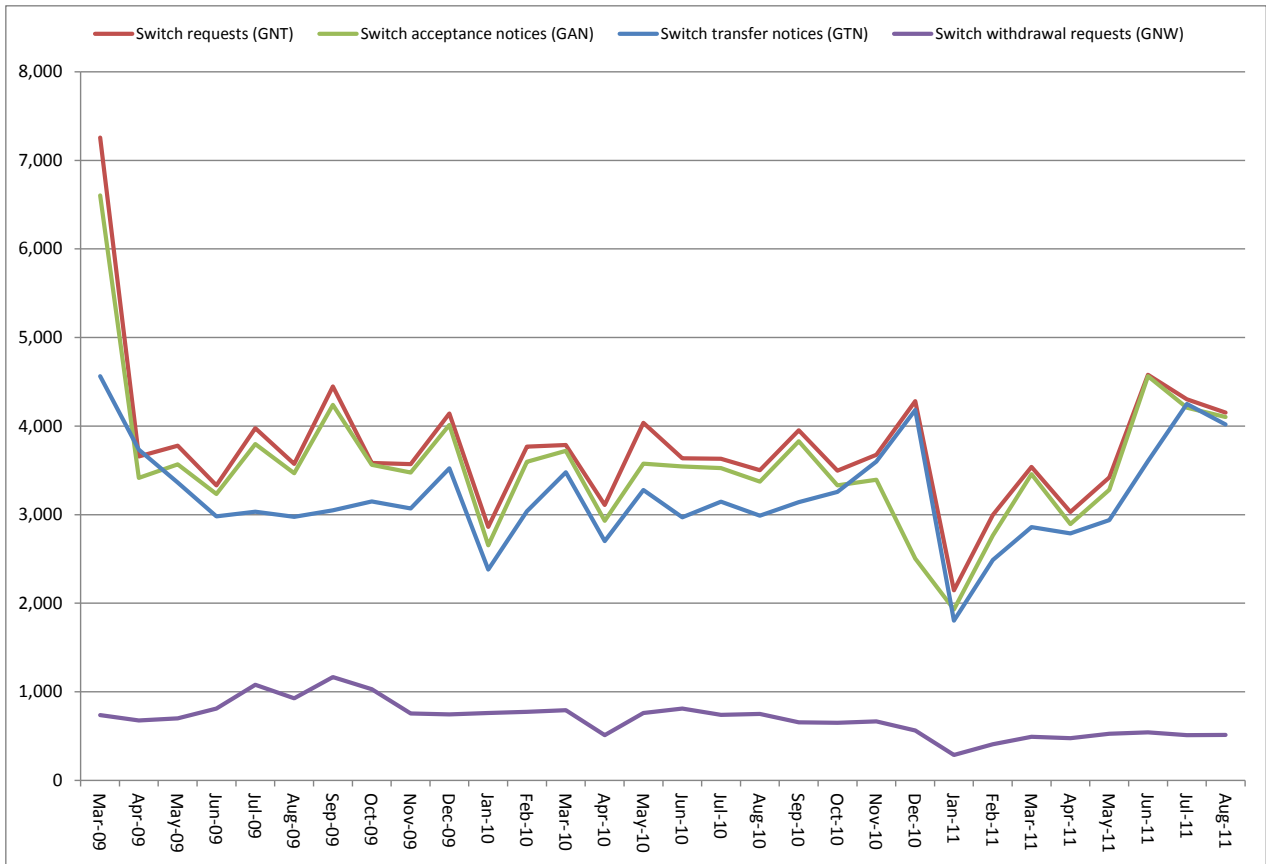
The following report provides statistics and charts illustrating gas registry usage, switching volumes and breakdowns of retailer, distributor and meter owner market shares. The information is provided in accordance with version 1.2 of the Determinations by the Industry Body (Gas Industry Co) under the Gas (Switching Arrangements) Rules 2008, dated 20 February 2009.

Summary registry statistics – August 2011

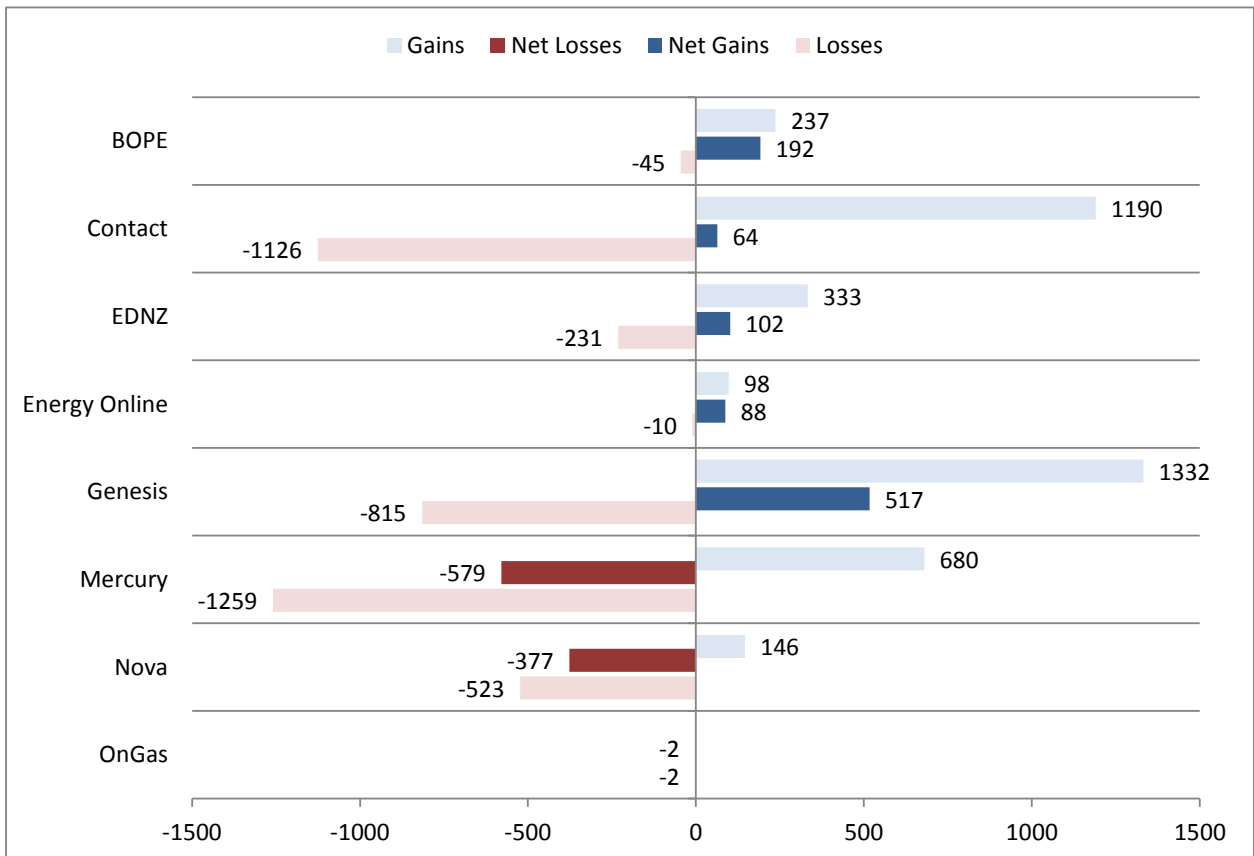
ICP enquiries processed in month (Online)	26,746
ICP enquiries processed in month (Offline)	12,734,634
Total ICP enquiries processed in month	12,761,380
ICPs added to the registry in month	392
ICPs changed in month	6,819
ICPs decommissioned in month	13
Valid standard switch requests (GNT-S) received in month	2,384
Valid move switch requests (GNT-SM) received in month	1,768
Valid switch requests (GNT) received in month	4,152
Valid switch acceptance notices (GAN) received in month	4,102
Valid switch transfer notices (GTN) received in month	4,017
Valid switch withdrawal requests (GNW) received in month	513
Valid switch withdrawal acceptances (GAW-A) received in month	518
Valid switch withdrawal rejections (GAW-R) received in month	16
Valid switch reading renegotiation requests (GNC) received in month	50
Valid switch reading renegotiation acceptances (GAC-A) received in month	50
Valid switch reading renegotiation rejections (GAC-R) received in month	2

Note: A switch transfer notice (GTN) is the last stage required to complete the switching process. This statistic indicates the number of switches completed in the month.

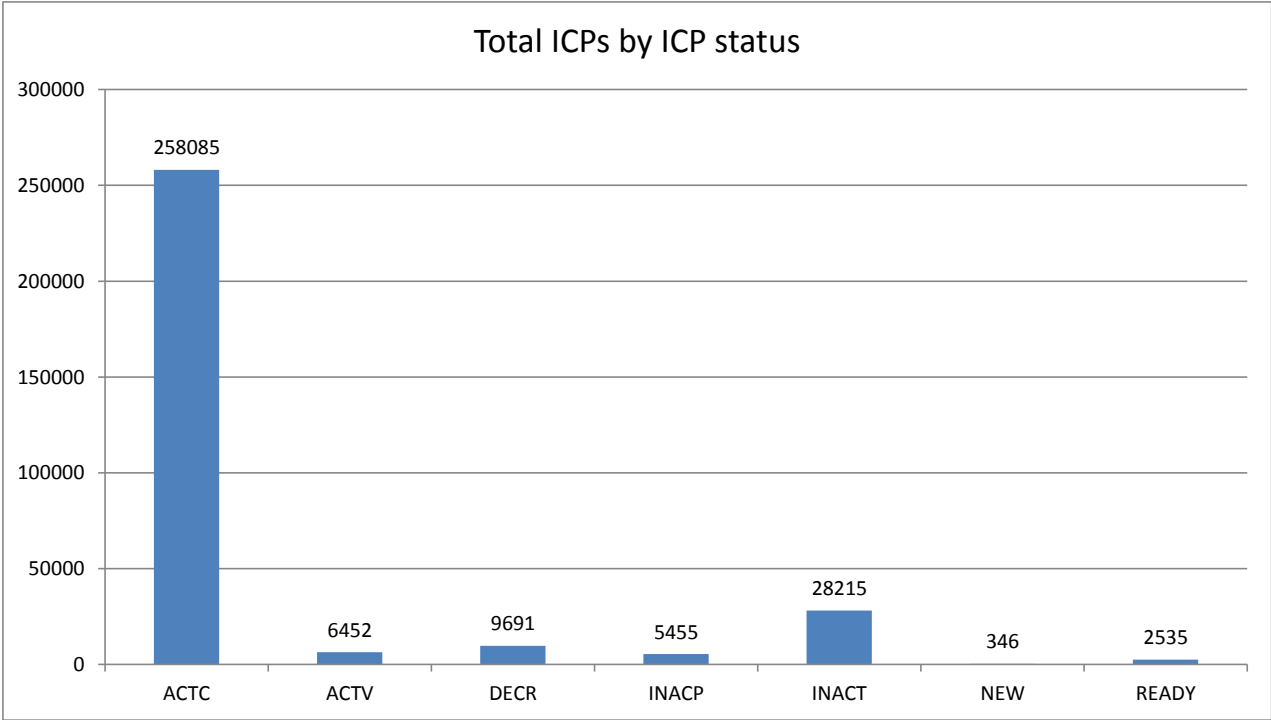
Switching activity – historical



Switching gains and losses – August 2011



ICPs by status – August 2011



Installation control points (ICPs) are the record of customer installations in the gas registry. The meaning of the ICP status codes are as follows:

ACTC—Active contracted (gas is able to flow and the customer has a contract with a retailer)

ACTV—Active vacant (gas is able to flow and the premises is vacant)

DECR—Decommissioned

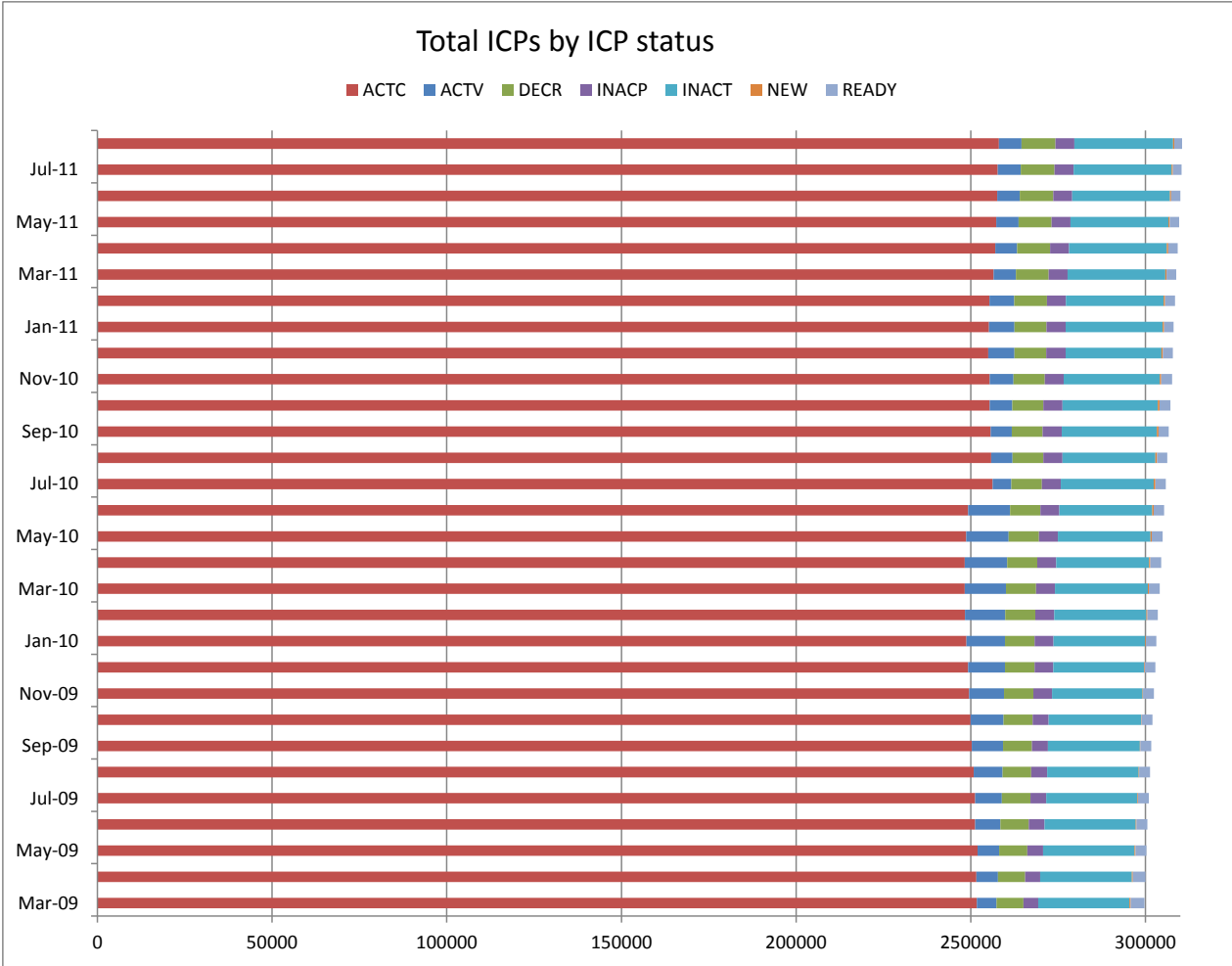
INACP—Inactive permanent (gas unable to flow due to a permanent disconnection)

INACT—Gas unable to flow due to a temporary disconnection

NEW—Newly created ICP, gas not yet able to flow

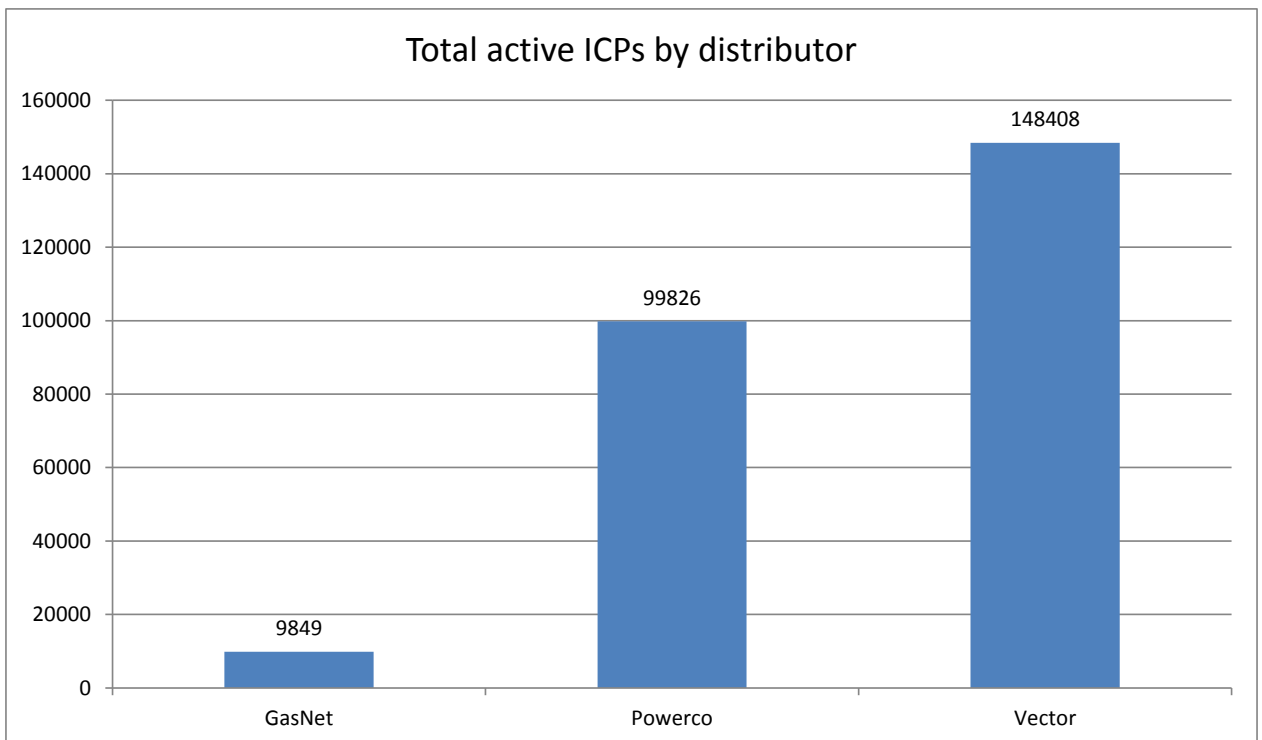
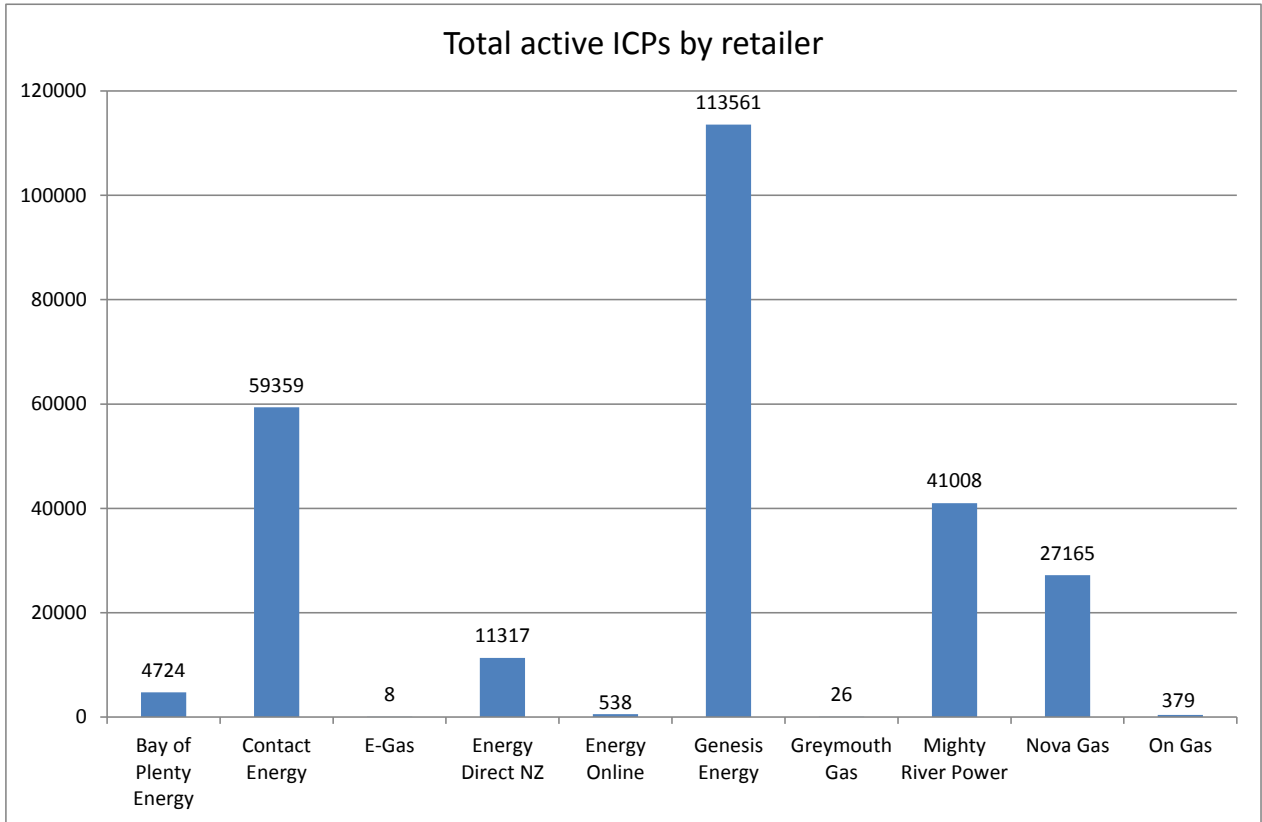
READY—New ICP, gas able to flow, awaiting uplift by retailer

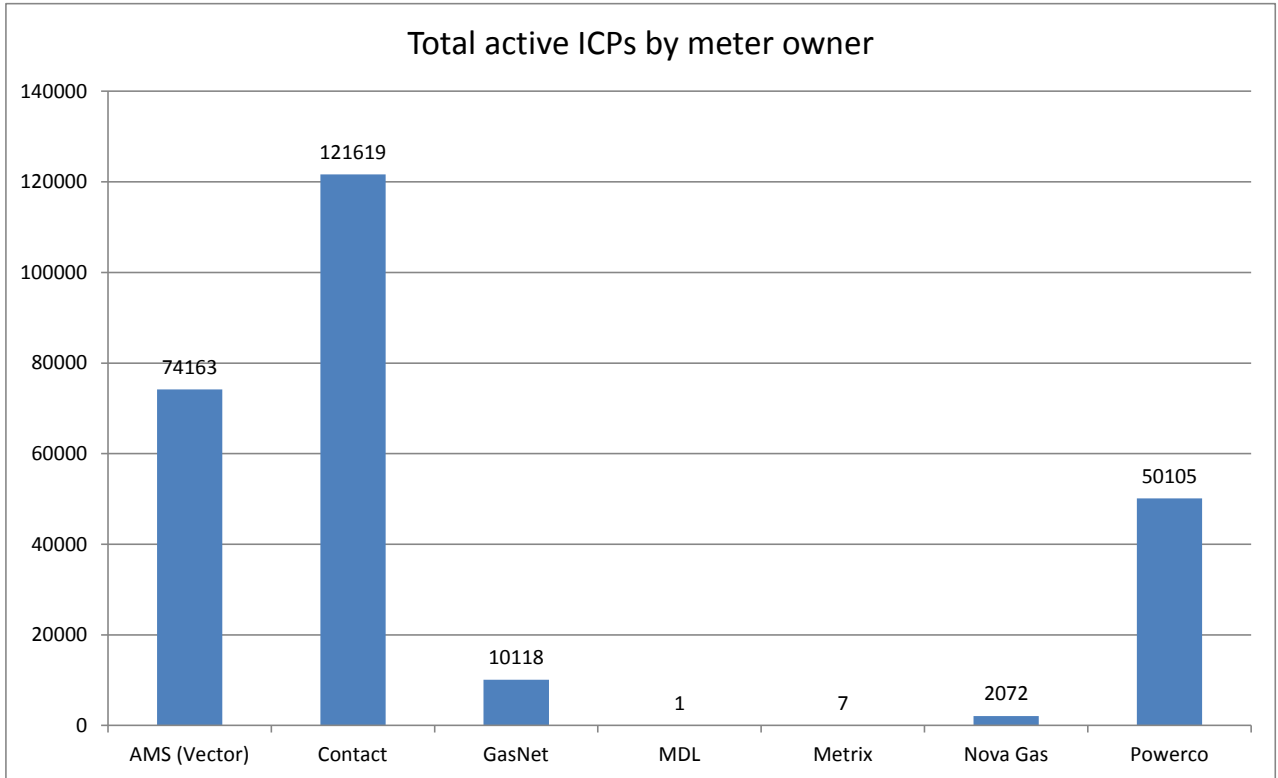
ICPs by status – historical



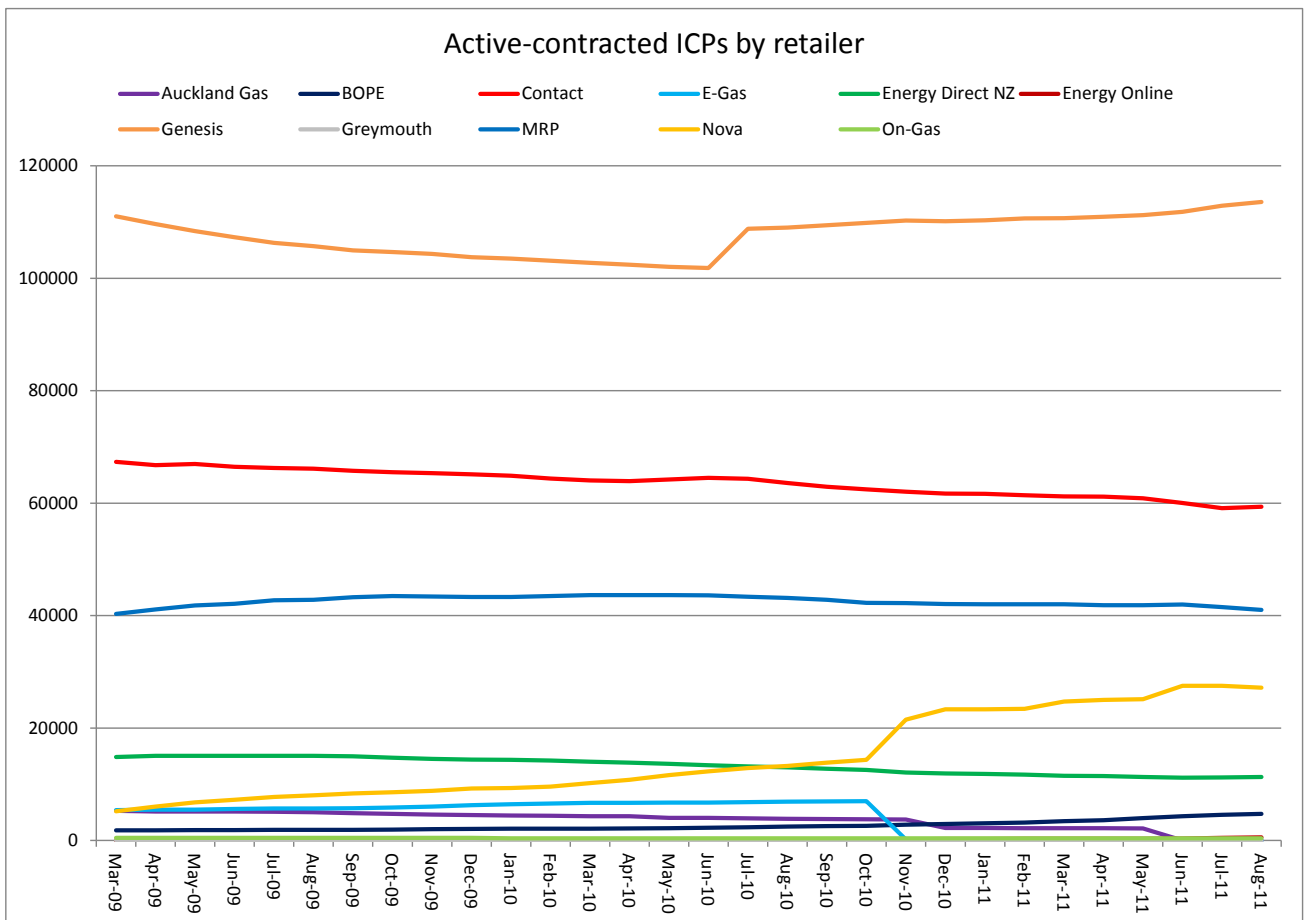
Market shares – August 2011

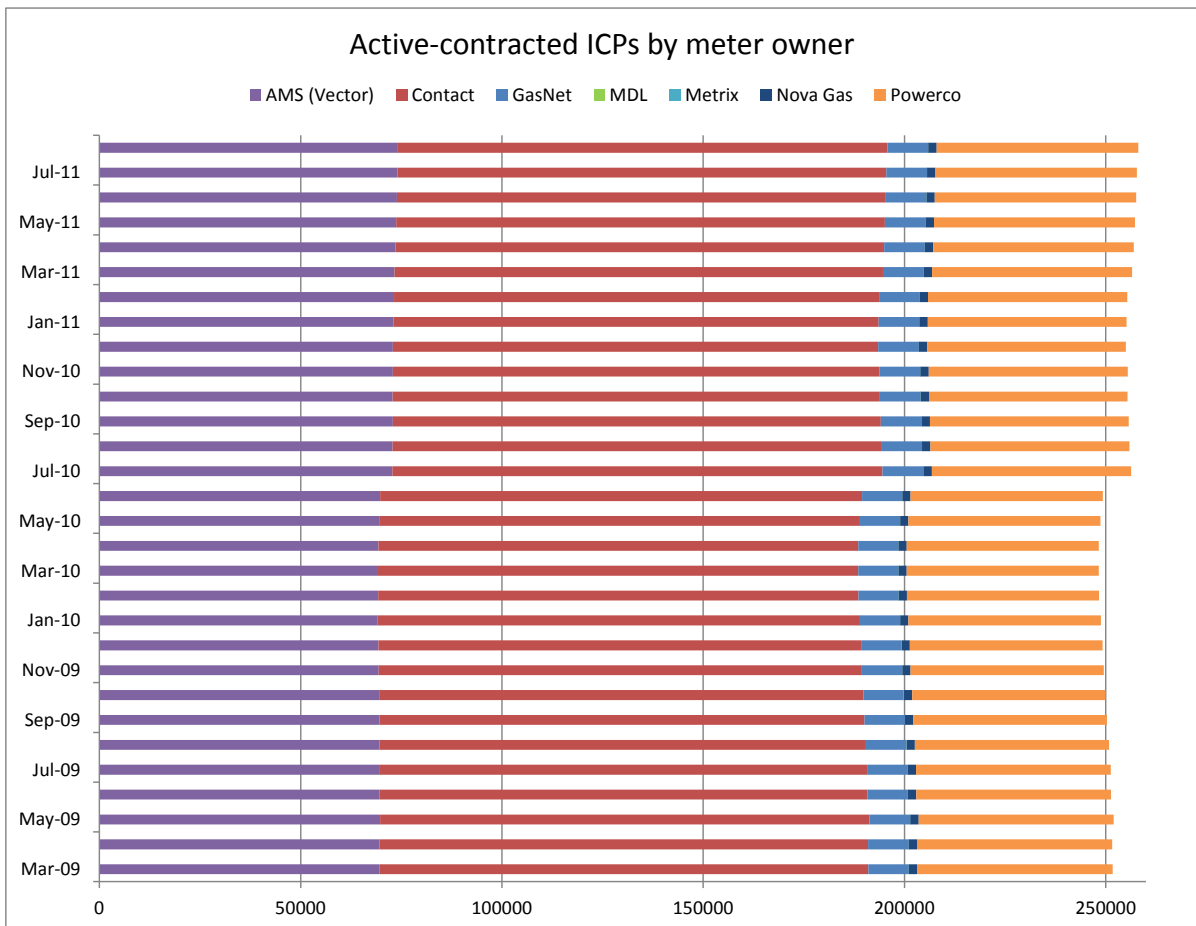
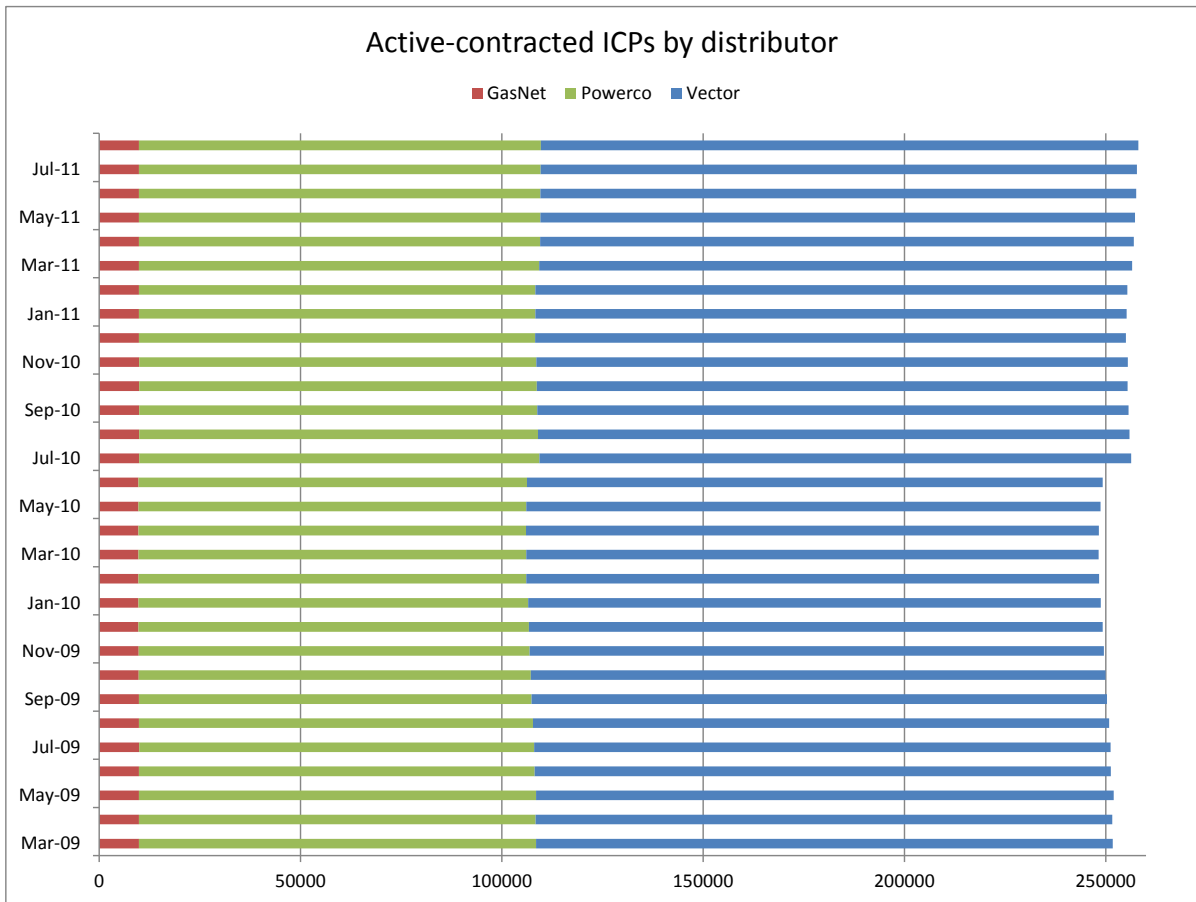
The following charts show the distribution of active-contracted ICPs by retailer, distribution company and meter owner respectively.





Market shares – historical





Active-contracted ICPs by gas gate and retailer – August 2011

The following table shows the distribution of active-contracted ICPs by gas gate, and the distribution by retailer at each gas gate.

The responsible retailer codes are as follows:

BOPE—Bay of Plenty Energy

CTCT—Contact Energy

EDNZ—Energy Direct NZ (Wanganui Gas)

EGLT—E-Gas Ltd

GEND—Genesis Energy

GENG—Genesis Energy

GEOL—Energy Online

GMTH—Greymouth Gas

GNGC—OnGas (Vector)

GNVG—Nova Gas

MEEN—Mighty River Power

The gas gate names associated with the codes used in the table can be found here:

http://gasindustry.co.nz/sites/default/files/u14/All_Gas_Gates_301009.pdf

Gas Gate	BOPE	CTCT	EDNZ	EGLT	GEND	GENG	GEOL	GMTH	GNGC	GNVG	MEEN	Total
ALF15501									1			1
ASH34301		53	30			63				60	9	215
BAL08201								1				1
BAL09626								1				1
BEL24510		1639	179		2	17338	18		9	1815	1578	22578
BMC17901		491	4		1	401	5		4	212	642	1760
BRO36301									1			1
CAM17201		89				1523				44	171	1827
DAN05001		74		1		9			1	21		106
DRU15101		14				4			1	8	3	30
DRU15102		11				11			4	6	18	50
EGC30701		1										1
EGC30702	2	1				2				1		6
ELM12301	28	43	32			221			3	5		332
FLD03001		394	206		2	441			1	628	44	1716
FLH21901		2	3									5
FOX22101		163	8		1	22	9		1	89	8	301
GIS07810		872	232		3	2019			3	156		3285
GLB03401									1			1
HAR11801						1			4			5
HEN74101		7126	9	1	4	6067	74	1	16	1277	6603	21178
HPS02993					1							1
HRU16101					1	1				2		4

Gas Gate	BOPE	CTCT	EDNZ	EGLT	GEND	GENG	GEOL	GMTH	GNGC	GNVG	MEEN	Total
HST05210		2490	274	2	2	445	168		6	996		4383
HTK08301		15				187				2	10	214
HTL16601		3			1	90			3	5	3	105
HTV11301	13	1772	3		3	22574			50	492	2048	26955
HUN15301			1						2	1		4
HWA20801	123	423	319			1846			4	62		2777
IGW11901	122	55	75			307				10		569
KAP12901		2				2						4
KAW04405	131	7	1			108				5		252
KAW04410									1			1
KAW04411									1			1
KIG16801		4								1	1	6
KIH19101		52			1	1234			1	37	38	1363
KIN02601		1				3			2		1	7
KIN04310									1			1
KIW34201								1				1
KIW34202						1			1			2
KKI23701		2								1		3
KPA12401	3	5	5			46						59
KRG24101		1	1							2		4
KTK23901									1			1
KUK22401		6				19				4		29
KUR33601									1			1

Gas Gate	BOPE	CTCT	EDNZ	EGLT	GEND	GENG	GEOL	GMTH	GNGC	GNVG	MEEN	Total
LAB20201		9	62			41				6	1	119
LCF20010		1										1
LNB24301		59	30		1	105			4	84	13	296
LVN24401		1636	101			335	98		5	616	73	2864
MGK05401								1				1
MMU08001	428	138	1		4	3149		1	3	147	317	4188
MNA23402	10	32	35			159				4		240
MNG34001									1			1
MRV16301		1										1
MRV16302	1	42				552				22	70	687
MSD01801		1										1
MSD01802									1			1
MTG17301		2				32					2	36
MTN23801		59	230			153	1		2	13		458
MTP20601		1				5						6
MUT19001									1			1
NGW14501		11				135				2	4	152
NPL12101	2201	849	1514		1	6076	2		6	207	5	10861
NPS00530		1										1
OAK18601						1						1
OKA13201	4	6	7			41				1		59
OKS32801										1	1	2
OKU16701	30	24	46			126				2		228

Gas Gate	BOPE	CTCT	EDNZ	EGLT	GEND	GENG	GEOL	GMTH	GNGC	GNVG	MEEN	Total
OPK13001	11	23	15			128						177
OPO32001	50	4			1	54				3		112
ORD24701		1	1							1		3
OTA22601		55	4	1		293				25	5	383
OTB00301		1										1
OTO14101		4				160				15		179
PAH23101						18						18
PAH23201						1				1		2
PAP06603		37			1	25				5	54	122
PAP06610		4211	7		3	849	10	1	56	676	3270	9083
PAU20101		529	51			2411			2	194	74	3261
PGH15901		1										1
PGU13101						14						14
PHT04901		38				38			1	11		88
PIR31101		2				44					3	49
PLN24201		3257	1214	1	1	3984	19		21	6220	358	15075
PPA33201		1				9				1		11
PTA20901	16	17	21			129			2	3		188
PTR32601	5	12	1			297			1	16	12	344
PUK04201		63			1	22	2			39	56	183
RAG33401										1		1
RAM15201		1							2			3
ROT08101	263	292	1			2727			12	213	418	3926

Gas Gate	BOPE	CTCT	EDNZ	EGLT	GEND	GENG	GEOL	GMTH	GNGC	GNVG	MEEN	Total
RPR30801		2				20				1	1	24
STR10201	91	77	78		1	632				20		899
TAC31001									1			1
TAT16401								1				1
TAU07001	100	273	3			1353			1	156	169	2055
TAW31004						1						1
TCC00201		1										1
THO22701		2				11				2		15
TIR33501		1										1
TIR33502	2	3				55				11	4	75
TKN17001		1				142			1	9		153
TKP05101										1		1
TKR19701	4	60	2			872			1	51	35	1025
TKS17401		1				18		1	2	1		23
TPK33301	28	7	1		1	528				23	23	611
TRC02003		1										1
TRG07701	604	145	3			3128			6	223	254	4363
TTK30601	1	1				3						5
TUK06501		5				1	1		2	2	1	12
TWA35610		8089	298	1	8	10321	29		29	7201	2558	28534
WAG21501		490	5901			2718	4	2	2	149		9266
WAK22801		199	22			1192				64	9	1486
WEL18301		2				19				3	2	26

Gas Gate	BOPE	CTCT	EDNZ	EGLT	GEND	GENG	GEOL	GMTH	GNGC	GNVG	MEEN	Total
WHG07501		101	3			924			6	99	87	1220
WHK32101	236	12				153			3	34	12	450
WKE19201									1			1
WRK18901		35				149			2	16	56	258
WST03610		21516	20	1	8	7415	86	14	72	4111	20572	53815
WTA16501			1			38		1		3	1	44
WTG06910		537	61		1	4584	11		3	400	497	6094
WTK33901		340				1330				42	653	2365
WTK33902		145				202				44	161	552
WTR12001	217	79	201			595	1		2	28		1123
WTT20301									1			1
WVY23601		2			1	4						7
Total	4724	59359	11317	8	55	113506	538	26	379	27165	41008	258085