

Gas Registry statistics – April 2011

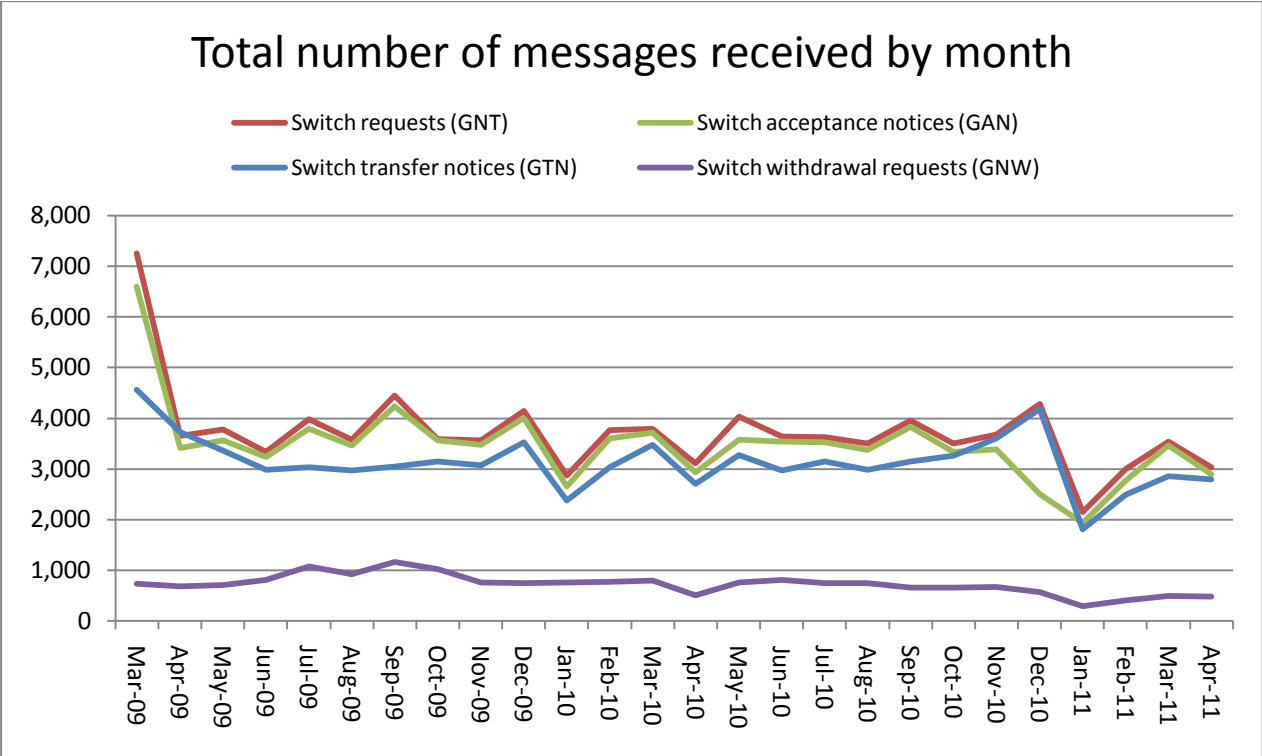
The following report provides statistics and charts illustrating gas registry usage, switching volumes and breakdowns of retailer, distributor and meter owner market shares. The information is provided in accordance with version 1.2 of the Determinations by the Industry Body (Gas Industry Co) under the Gas (Switching Arrangements) Rules 2008, dated 20 February 2009.

Summary registry statistics – April 2011

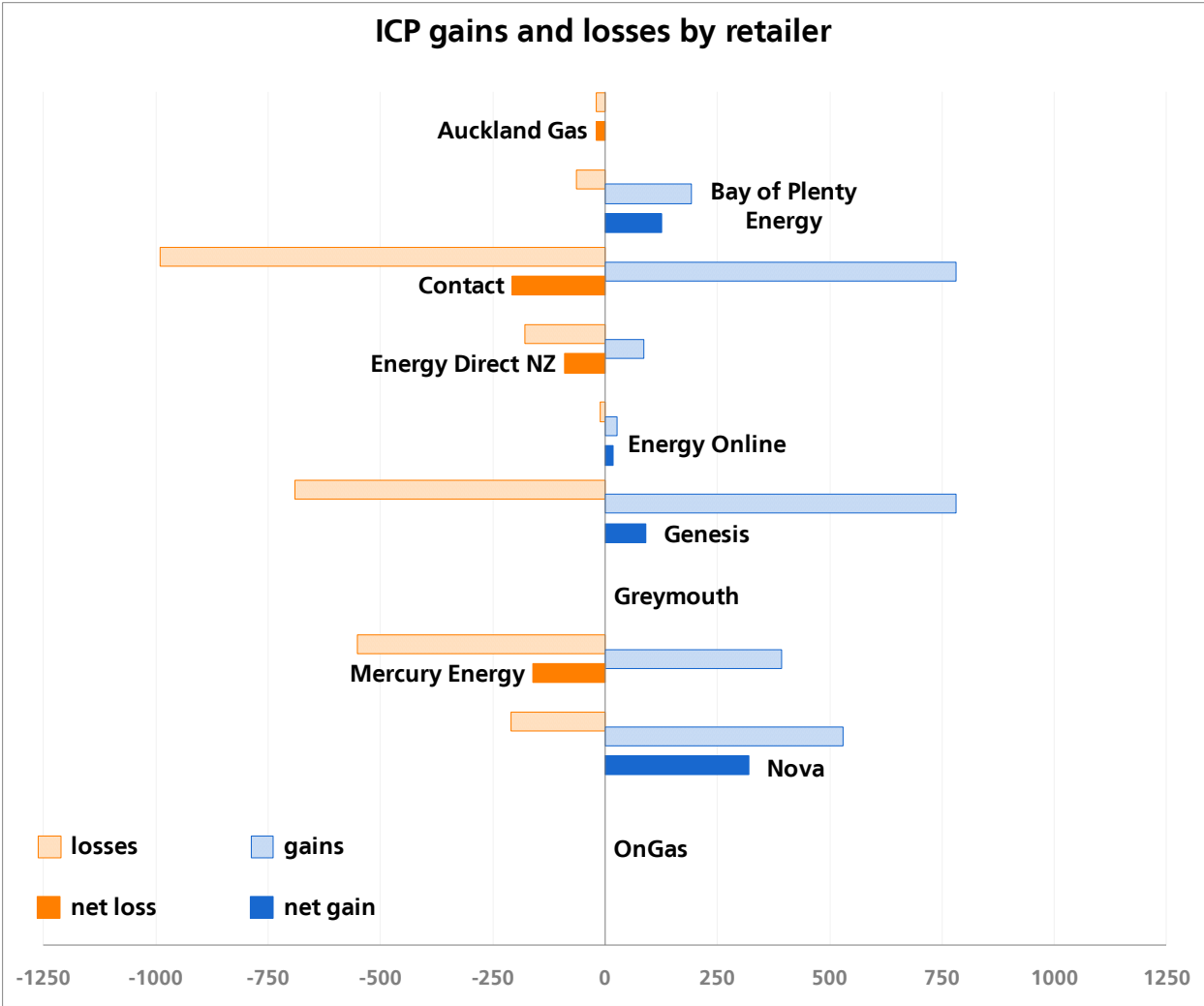
| | |
|--|------------------|
| ICP enquiries processed in month (Online) | 29,721 |
| ICP enquiries processed in month (Offline) | 9,660,762 |
| Total ICP enquiries processed in month | 9,690,483 |
| ICPs added to the Registry in month | 371 |
| ICPs changed in month | 2,808 |
| ICPs decommissioned in month | 19 |
| Valid standard switch requests (GNT-S) received in month | 1,494 |
| Valid move switch requests (GNT-SM) received in month | 1,535 |
| Valid switch requests (GNT) received in month | 3,029 |
| Valid switch acceptance notices (GAN) received in month | 2,893 |
| Valid switch transfer notices (GTN) received in month | 2,789 |
| Valid switch withdrawal requests (GNW) received in month | 476 |
| Valid switch withdrawal acceptances (GAW-A) received in month | 474 |
| Valid switch withdrawal rejections (GAW-R) received in month | 14 |
| Valid switch reading renegotiation requests (GNC) received in month | 37 |
| Valid switch reading renegotiation acceptances (GAC-A) received in month | 36 |
| Valid switch reading renegotiation rejections (GAC-R) received in month | 1 |

Note: A switch transfer notice (GTN) is the last stage required to complete the switching process. This statistic indicates the number of switches completed in the month.

Switching activity – historical



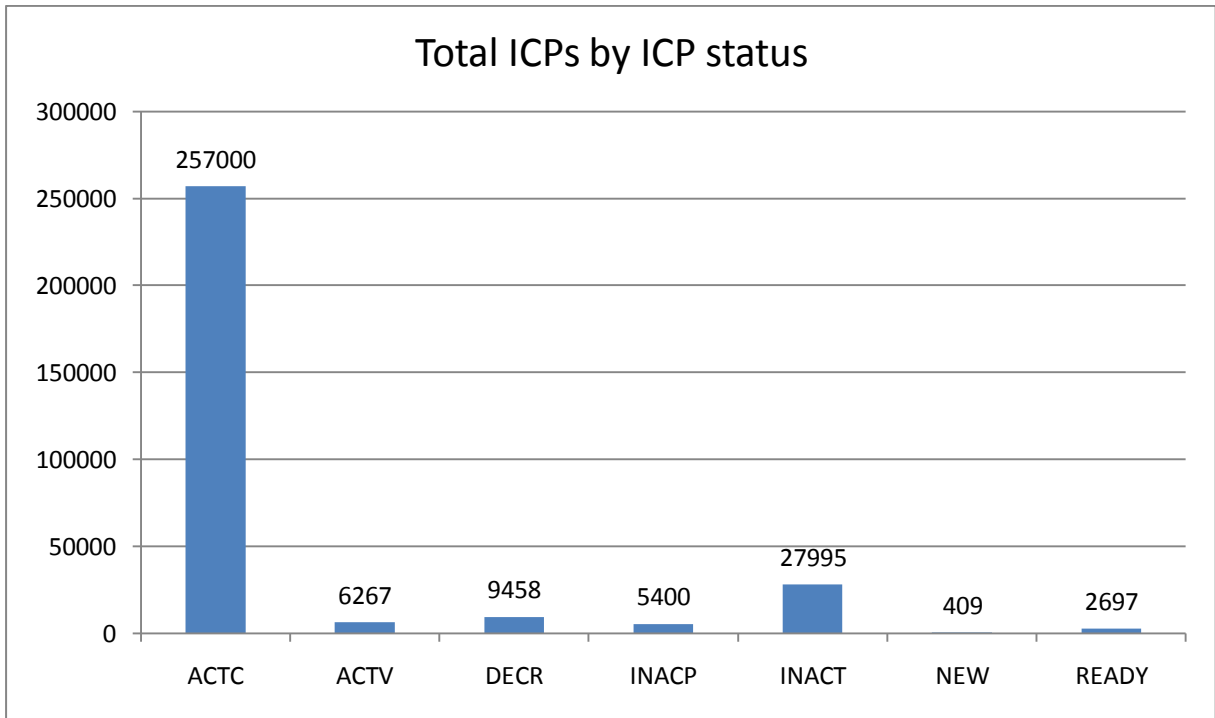
Switches by retailer – April 2011



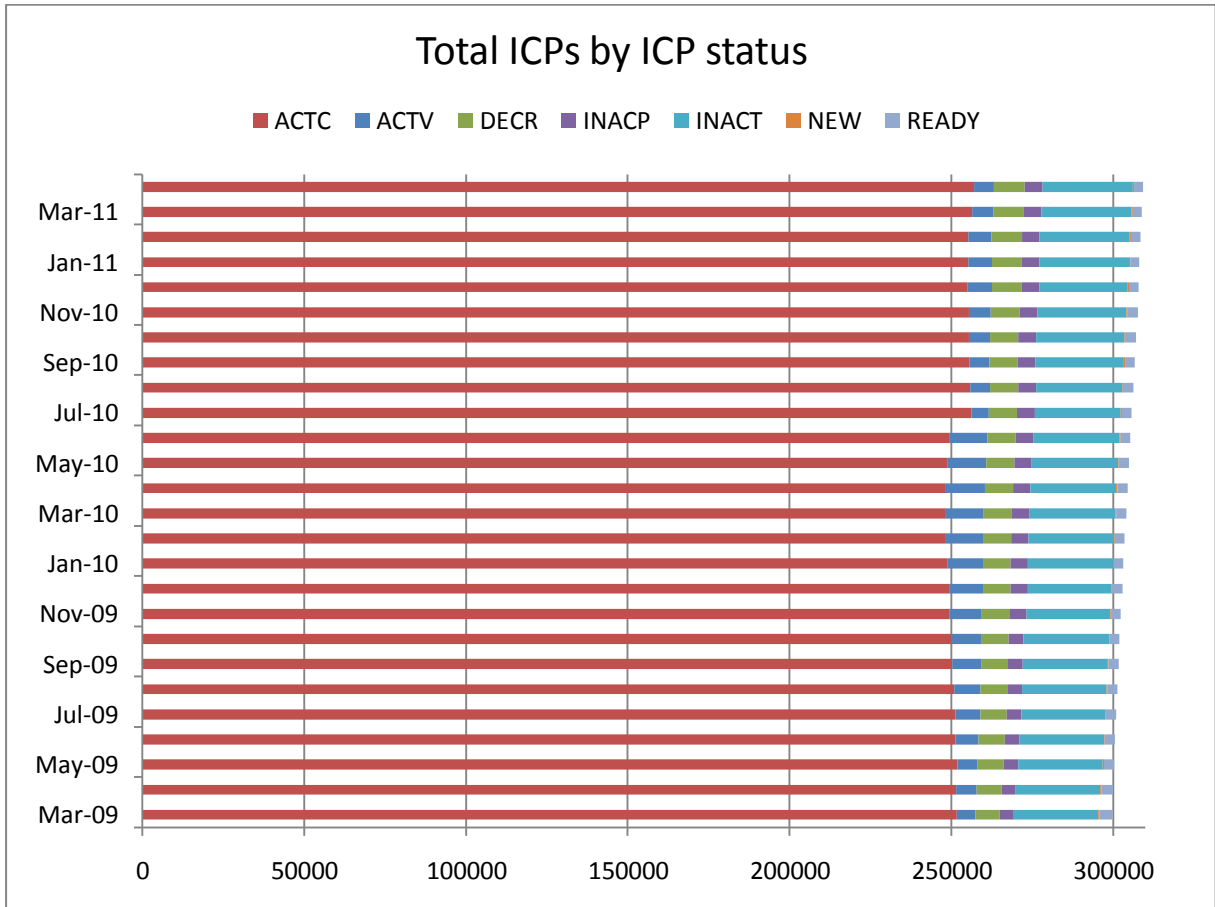
ICPs by status – April 2011

The meaning of the ICP status codes are as follows:

- ACTC—Active contracted (gas is able to flow and the customer has a contract with a retailer)
- ACTV—Active vacant (gas is able to flow and the premises is vacant)
- DECR—Decommissioned
- INACP—Inactive permanent (gas unable to flow due to a permanent disconnection)
- INACT—Gas unable to flow due to a temporary disconnection
- NEW—Newly created ICP, gas not yet able to flow
- READY—New ICP, gas able to flow, awaiting uplift by retailer

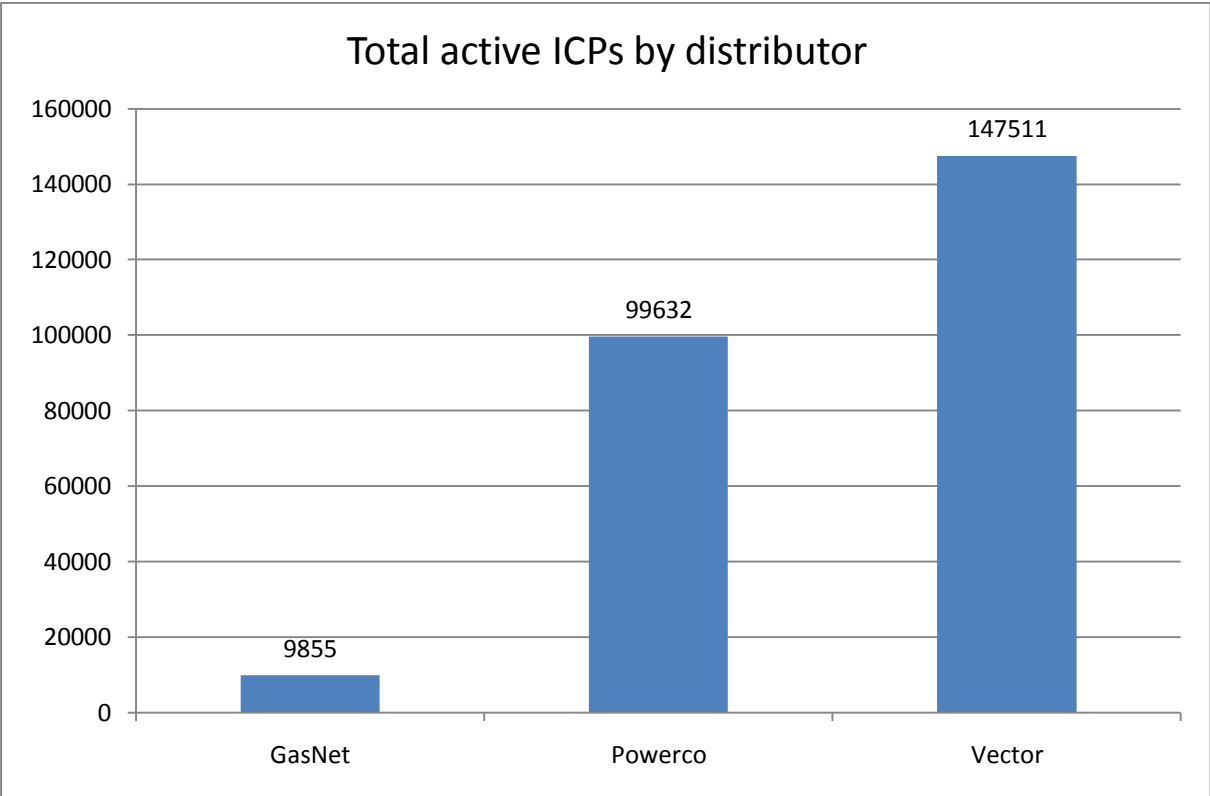
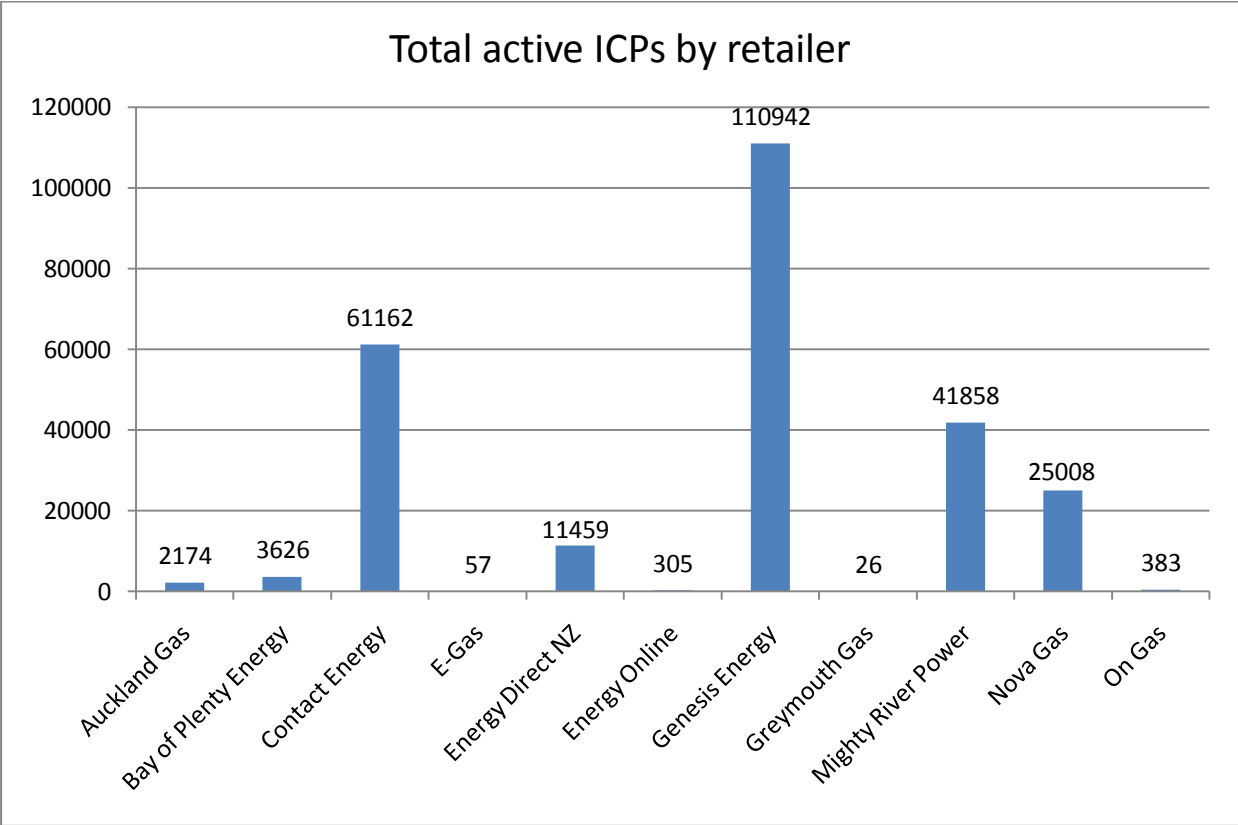


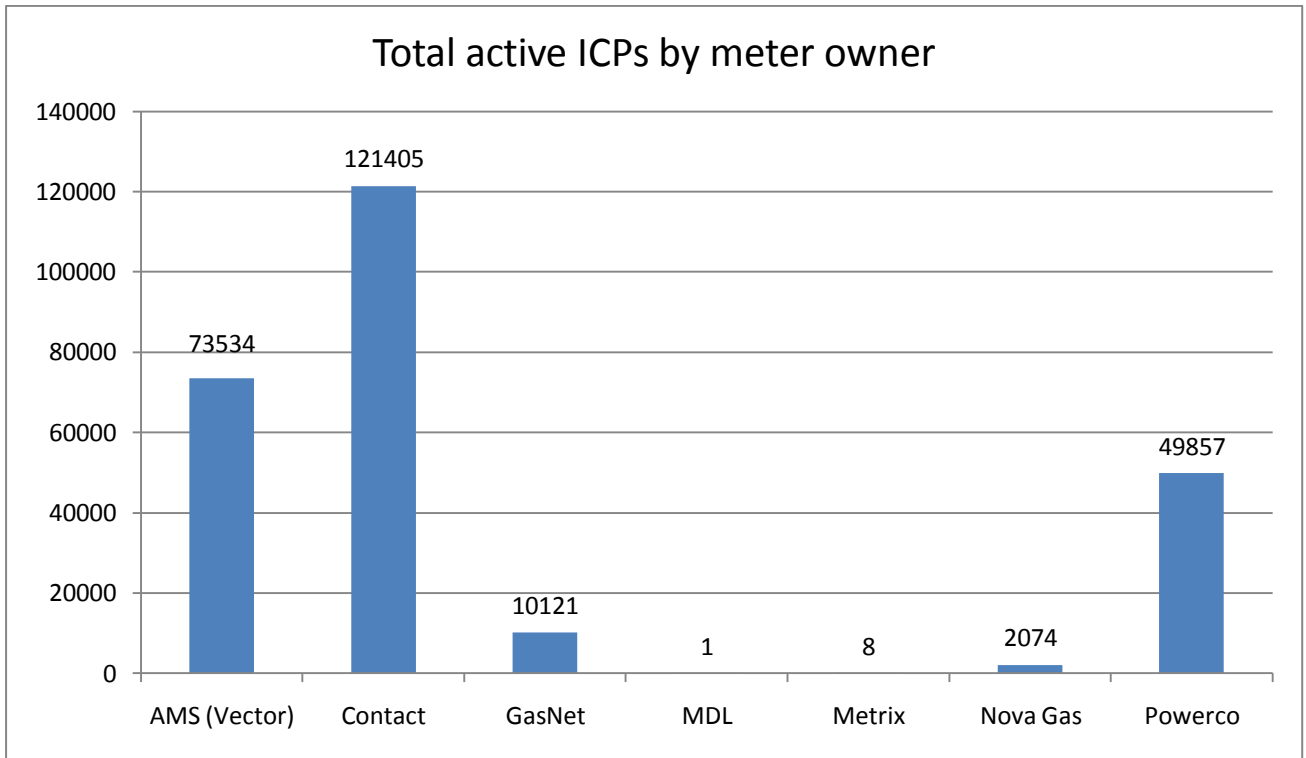
ICPs by status – historical



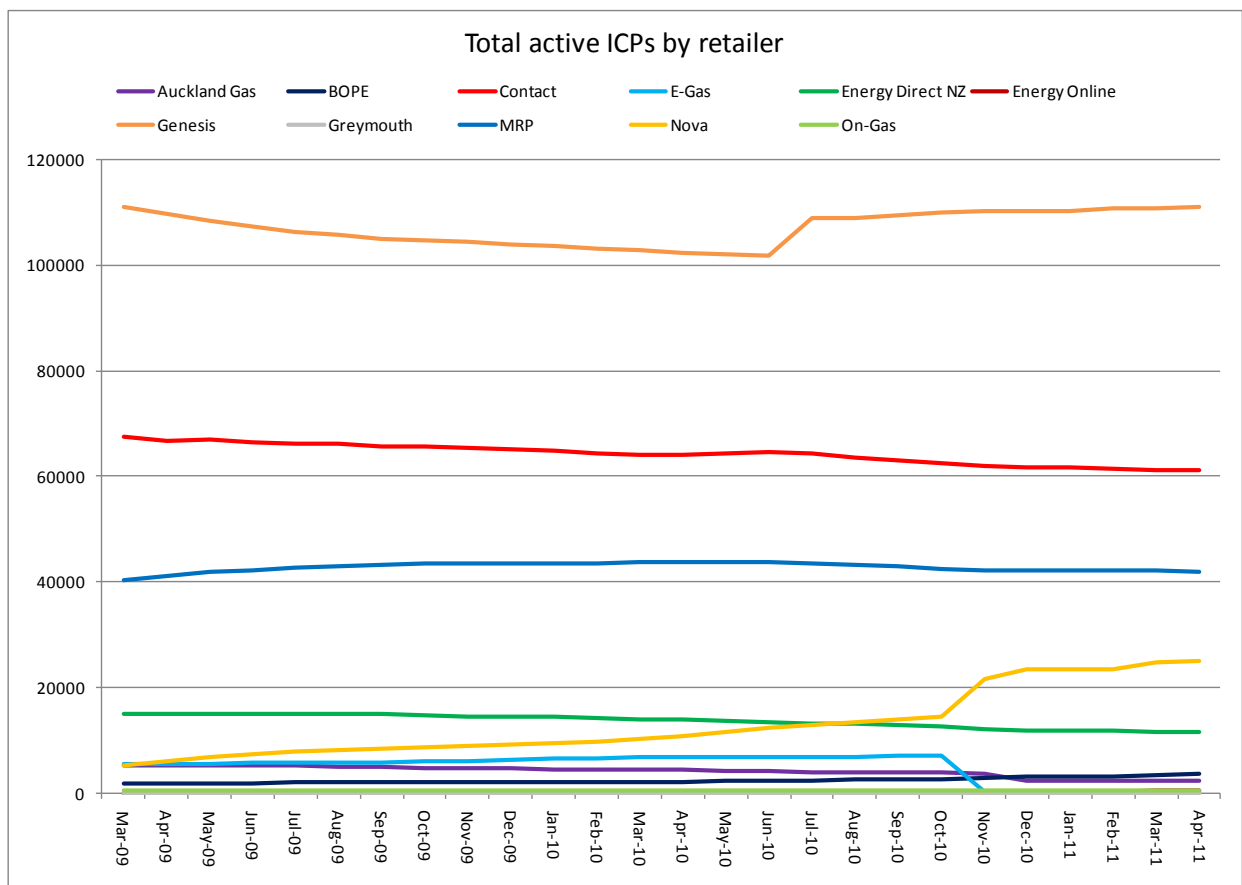
Market shares – April 2011

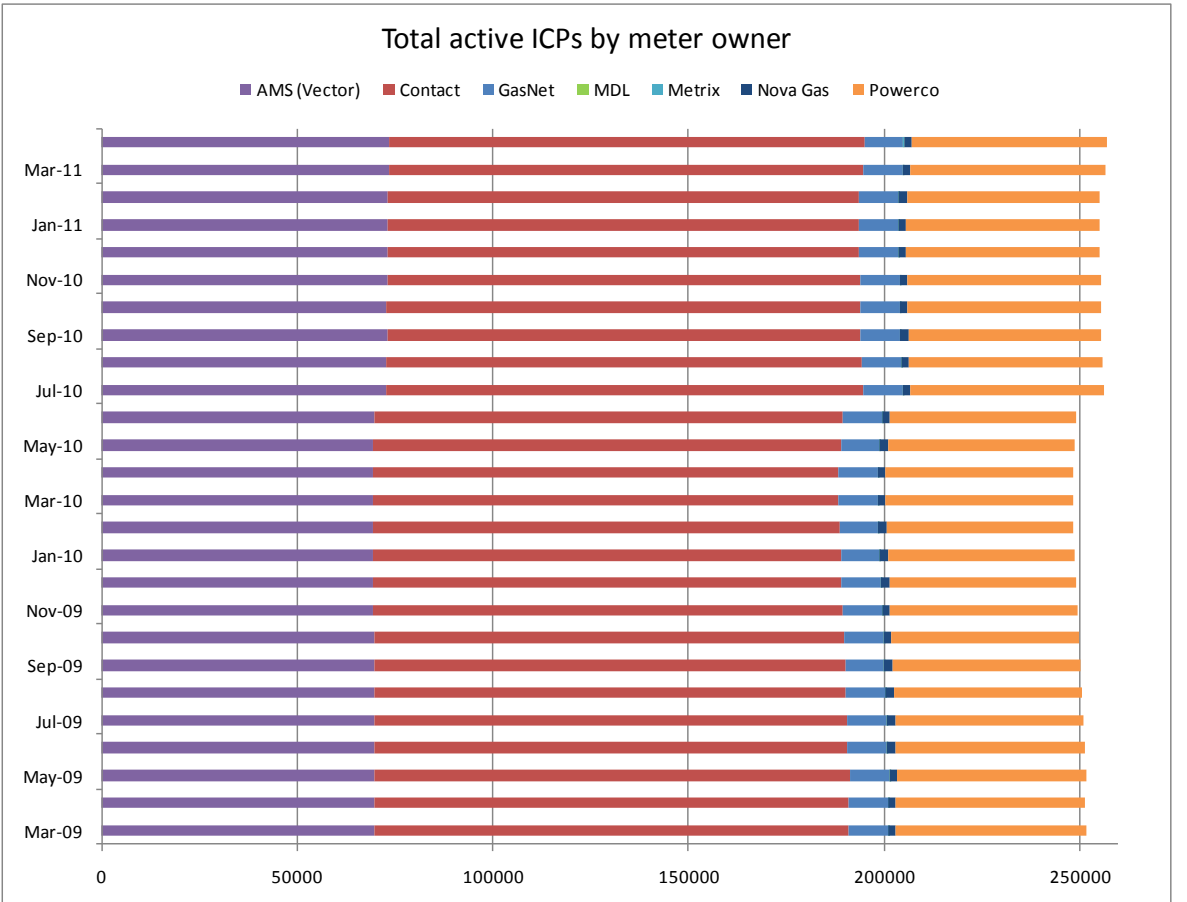
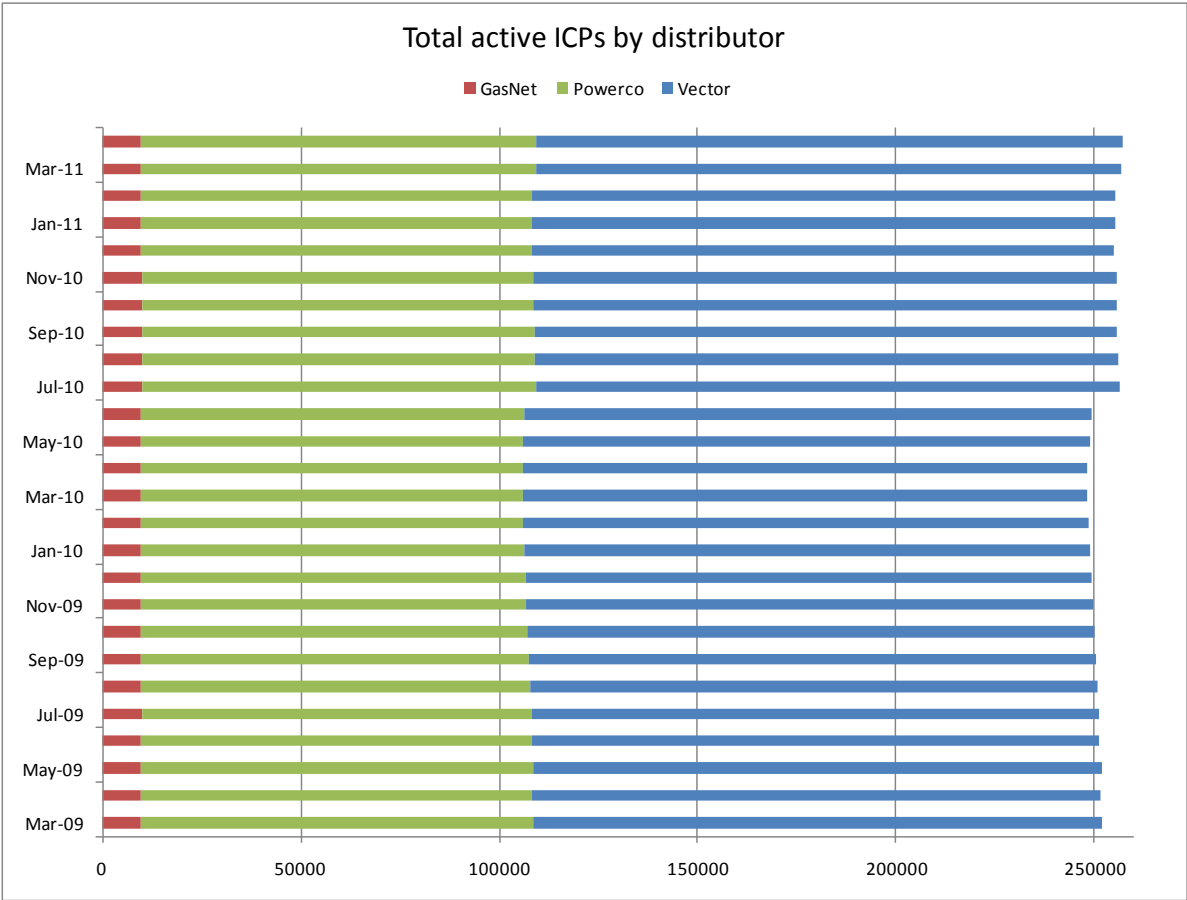
The following charts show the distribution of active-contracted ICPs by retailer, distribution company and meter owner respectively.





Market shares – historical





Active ICPs by gas gate and responsible retailer – April 2011

The following table shows the distribution of active ICPs by gas gate, and the distribution by retailer at each gas gate.

The responsible retailer codes are as follows:

AGCL—Auckland Gas Company

BOPE—Bay of Plenty Energy

CTCT—Contact Energy

EGAS—E-Gas 2000

EGLT—E-Gas Ltd

EDNZ—Energy Direct NZ (Wanganui Gas)

GENG—Genesis Energy

GEND—Genesis Energy

GEOL—Energy Online

GMTH—Greymouth Gas

MEEN—Mighty River Power

GNVG—Nova Gas

GNGC—OnGas (Vector)

| Gas Gate | AGCL | BOPE | CTCT | EDNZ | EGAS | EGLT | GEND | GENG | GEOL | GMTH | GNGC | GNVG | MEEN | Total |
|----------|------|------|------|------|------|------|------|-------|------|------|------|------|------|-------|
| ALF15501 | | | | | | | | | | | 1 | | | 1 |
| ASH34301 | | | 56 | 30 | | | | 58 | | | | 60 | 8 | 212 |
| BAL08201 | | | | | | | | | | 1 | | | | 1 |
| BAL09626 | | | | | | | | | | 1 | | | | 1 |
| BEL24510 | | | 1665 | 37 | 1 | | 2 | 17311 | 9 | | 9 | 1885 | 1640 | 22559 |
| BMC17901 | 67 | | 464 | 2 | | | 1 | 358 | 1 | | 4 | 155 | 684 | 1736 |
| BRO36301 | | | | | | | | | | | 1 | | | 1 |
| CAM17201 | | | 78 | | | | | 1502 | | | | 44 | 170 | 1794 |
| DAN05001 | | | 76 | | | 1 | | 8 | | | 1 | 22 | | 108 |
| DRU15101 | | | 13 | | | | | 3 | | | 2 | 8 | 3 | 29 |
| DRU15102 | | | 8 | | | | | 10 | | | 4 | 5 | 6 | 33 |
| EGC30701 | | | 1 | | | | | | | | | | | 1 |
| EGC30702 | | 2 | 1 | | | | | 2 | | | | 1 | | 6 |
| ELM12301 | | 11 | 50 | 39 | | | | 229 | | | 3 | 5 | | 337 |
| FLD03001 | | | 407 | 200 | | | 2 | 424 | | | 1 | 655 | 28 | 1717 |
| FLH21901 | | | 1 | 3 | | | | 2 | | | | | | 6 |
| FOX22101 | | | 216 | 11 | | | 1 | 23 | 5 | | 1 | 24 | 14 | 295 |
| GIS07810 | | | 853 | 228 | | | 3 | 2056 | | | 3 | 159 | | 3302 |
| GLB03401 | | | | | | | | | | | 1 | | | 1 |
| HAR11801 | | | | | | | | 1 | | | 4 | | | 5 |
| HEN74101 | 468 | | 7078 | 4 | 1 | 6 | 4 | 5485 | 22 | 1 | 16 | 810 | 7059 | 20954 |
| HPS02993 | | | | | | | 1 | | | | | | | 1 |
| HRU16101 | | | | | | | 1 | 1 | | | | 2 | | 4 |

| Gas Gate | AGCL | BOPE | CTCT | EDNZ | EGAS | EGLT | GEND | GENG | GEOL | GMTH | GNGC | GNVG | MEEN | Total |
|----------|------|------|------|------|------|------|------|-------|------|------|------|------|------|-------|
| HST05210 | | | 3087 | 299 | | 2 | 2 | 390 | 150 | | 6 | 444 | | 4380 |
| HTK08301 | | | 4 | | | | | 44 | | | | 1 | 6 | 55 |
| HTL16601 | | | 5 | | | | 1 | 102 | | | 3 | 5 | 4 | 120 |
| HTV11301 | 1 | 10 | 1638 | | | 6 | 3 | 22589 | | | 50 | 506 | 2151 | 26954 |
| HUN15301 | 1 | | | 1 | | | | | | | 2 | | | 4 |
| HWA20801 | | 83 | 440 | 326 | | 1 | | 1876 | | | 4 | 66 | | 2796 |
| IGW11901 | | 56 | 76 | 100 | | | | 322 | | | | 12 | | 566 |
| KAP12901 | | | 2 | | | | | 2 | | | | | | 4 |
| KAW04405 | | 128 | 7 | 1 | | | | 110 | | | | 5 | | 251 |
| KAW04410 | | | | | | | | | | | 1 | | | 1 |
| KAW04411 | | | | | | | | | | | 1 | | | 1 |
| KIG16801 | | | 4 | | | | | | | | | 1 | 1 | 6 |
| KIH19101 | | | 45 | | | | 1 | 1230 | | | 1 | 38 | 43 | 1358 |
| KIN02601 | | | | | | | | 4 | | | 2 | | 1 | 7 |
| KIN04310 | | | | | | | | | | | 1 | | | 1 |
| KIW34201 | | | | | | | | | | 1 | | | | 1 |
| KIW34202 | | | | | | | | 1 | | | 1 | | | 2 |
| KKI23701 | | | 2 | | | | | | | | | 1 | | 3 |
| KPA12401 | | 3 | 3 | 5 | | | | 51 | | | | | | 62 |
| KRG24101 | | | 1 | 1 | | | | | | | | 2 | | 4 |
| KTK23901 | | | | | | | | | | | 1 | | | 1 |
| KUK22401 | | | 6 | | | | | 19 | | | | 4 | | 29 |
| KUR33601 | | | | | | | | | | | 1 | | | 1 |

| Gas Gate | AGCL | BOPE | CTCT | EDNZ | EGAS | EGLT | GEND | GENG | GEOL | GMTH | GNGC | GNVG | MEEN | Total |
|----------|------|------|------|------|------|------|------|------|------|------|------|------|------|-------|
| LAB20201 | | | 8 | 63 | | | | 41 | | | | 6 | 1 | 119 |
| LCF20010 | | | 1 | | | | | | | | | | | 1 |
| LNB24301 | | | 58 | 31 | | | 1 | 104 | | | 4 | 90 | 12 | 300 |
| LVN24401 | | | 1834 | 115 | | 1 | | 307 | 72 | | 5 | 441 | 74 | 2849 |
| MGK05401 | | | | | | | | | | 1 | | | | 1 |
| MMU08001 | 1 | 432 | 121 | | | 1 | 4 | 3143 | | 1 | 3 | 151 | 324 | 4181 |
| MNA23402 | | 5 | 35 | 34 | | | | 171 | | | | 4 | | 249 |
| MRV16301 | | | 1 | | | | | 1 | | | | | | 2 |
| MRV16302 | | | 37 | | | | | 553 | | | | 22 | 72 | 684 |
| MSD01801 | | | 1 | | | | | | | | | | | 1 |
| MSD01802 | | | | | | | | | | | 1 | | | 1 |
| MTG17301 | | | 1 | | | | | 33 | | | | | 1 | 35 |
| MTN23801 | | | 60 | 239 | | | | 147 | 1 | | 2 | 14 | | 463 |
| MTP20601 | | | | | | | | 5 | | | | | | 5 |
| MUT19001 | | | | | | | | | | | 1 | | | 1 |
| NGW14501 | | | 14 | | | | | 135 | | | | 2 | 6 | 157 |
| NPL12101 | | 1455 | 1013 | 1834 | | 1 | 1 | 6290 | 1 | | 6 | 234 | | 10835 |
| NPS00530 | | | 1 | | | | | | | | | | | 1 |
| OAK18601 | | | | | | | | 1 | | | | | | 1 |
| OKA13201 | | 2 | 8 | 7 | | | | 41 | | | | 1 | | 59 |
| OKS32801 | | | | | | | | | | | | 1 | 1 | 2 |
| OKU16701 | | 18 | 28 | 49 | | | | 127 | | | | 2 | 1 | 225 |
| OPK13001 | | 7 | 28 | 14 | | | | 126 | | | | | | 175 |

| Gas Gate | AGCL | BOPE | CTCT | EDNZ | EGAS | EGLT | GEND | GENG | GEOL | GMTH | GNGC | GNVG | MEEN | Total |
|----------|------|------|------|------|------|------|------|------|------|------|------|------|------|-------|
| OPO32001 | | 49 | 4 | | | | 1 | 55 | | | | 3 | | 112 |
| ORD24701 | | | 1 | 1 | | | | | | | | 1 | | 3 |
| OTA22601 | | | 54 | 3 | | 2 | | 294 | | | | 25 | 6 | 384 |
| OTB00301 | | | 1 | | | | | | | | | | | 1 |
| OTO14101 | | | 4 | | | | | 159 | | | | 15 | | 178 |
| PAH23101 | | | | | | | | 15 | | | | | | 15 |
| PAH23201 | | | | | | | | 1 | | | | 1 | | 2 |
| PAP06603 | 1 | | 37 | | | | 1 | 20 | | | | 6 | 54 | 119 |
| PAP06610 | 167 | | 4327 | 6 | | 2 | 3 | 727 | 2 | 1 | 58 | 502 | 3246 | 9041 |
| PAU20101 | | | 522 | 46 | | 1 | | 2400 | | | 2 | 188 | 86 | 3245 |
| PGH15901 | | | 1 | | | | | | | | | | | 1 |
| PGU13101 | | | | | | | | 14 | | | | | | 14 |
| PHT04901 | | | 42 | | | | | 38 | | | 1 | 11 | | 92 |
| PIR31101 | | | 1 | | | | | 44 | | | | | 4 | 49 |
| PLN24201 | | | 3324 | 1197 | | 3 | 1 | 3817 | 9 | | 21 | 6394 | 253 | 15019 |
| PPA33201 | | | 1 | | | | | 7 | | | | | | 8 |
| PTA20901 | | 14 | 16 | 23 | | | | 131 | | | 2 | 3 | | 189 |
| PTR32601 | | 3 | 11 | | | | | 298 | | | 1 | 18 | 12 | 343 |
| PUK04201 | 6 | | 61 | | | | 1 | 20 | 1 | | | 32 | 54 | 175 |
| RAG33401 | | | | | | | | | | | | 1 | | 1 |
| RAM15201 | | | 1 | | | | | | | | 2 | | | 3 |
| ROT08101 | | 268 | 278 | | | 4 | | 2702 | | | 12 | 217 | 429 | 3910 |
| RPR30801 | | | 2 | | | | | 19 | | | | 1 | 1 | 23 |

| Gas Gate | AGCL | BOPE | CTCT | EDNZ | EGAS | EGLT | GEND | GENG | GEOL | GMTH | GNGC | GNVG | MEEN | Total |
|----------|------|------|------|------|------|------|------|------|------|------|------|------|------|-------|
| STR10201 | | 23 | 99 | 93 | | | 1 | 663 | | | | 25 | | 904 |
| TAC31001 | | | | | | | | | | | 1 | | | 1 |
| TAT16401 | | | | | | | | | | 1 | | | | 1 |
| TAU07001 | | 104 | 266 | 2 | | 2 | | 1354 | | | 1 | 161 | 161 | 2051 |
| TCC00201 | | | 1 | | | | | | | | | | | 1 |
| THO22701 | | | 2 | | | | | 11 | | | | 2 | | 15 |
| TIR33501 | | | 1 | | | | | | | | | | | 1 |
| TIR33502 | | 2 | 2 | | | 1 | | 54 | | | | 11 | 6 | 76 |
| TKN17001 | | | 1 | | | | | 142 | | | 1 | 9 | | 153 |
| TKP05101 | | | | | | | | | | | | 1 | | 1 |
| TKR19701 | | 4 | 50 | | | | | 875 | | | 1 | 54 | 39 | 1023 |
| TKS17401 | | | 1 | | | | | 17 | | 1 | 2 | 1 | | 22 |
| TPK33301 | | 28 | 4 | | | | 1 | 532 | | | | 25 | 25 | 615 |
| TRC02003 | | | 1 | | | | | | | | | | | 1 |
| TRG07701 | | 598 | 137 | 3 | | 1 | | 3100 | | | 6 | 227 | 264 | 4336 |
| TTK30601 | | 2 | | | | | | 4 | | | | | | 6 |
| TUK06501 | 1 | | 6 | | | | | 1 | | | 2 | 1 | 1 | 12 |
| TWA35610 | | | 8354 | 82 | | 5 | 7 | 9944 | 15 | | 30 | 7608 | 2414 | 28459 |
| WAG21501 | | | 466 | 6004 | | 2 | | 2641 | 1 | 2 | 2 | 148 | | 9266 |
| WAK22801 | | | 190 | 21 | | | | 1185 | | | | 67 | 12 | 1475 |
| WEL18301 | | | 3 | | | | | 19 | | | | 3 | 1 | 26 |
| WHG07501 | | | 88 | 2 | | | | 941 | | | 5 | 100 | 81 | 1217 |
| WHK32101 | | 245 | 7 | | | 2 | | 146 | | | 3 | 36 | 9 | 448 |

| Gas Gate | AGCL | BOPE | CTCT | EDNZ | EGAS | EGLT | GEND | GENG | GEOL | GMTH | GNGC | GNVG | MEEN | Total |
|--------------|-------------|-------------|--------------|--------------|----------|-----------|-----------|---------------|------------|-----------|------------|--------------|--------------|---------------|
| WKE19201 | | | | | | | | | | | 1 | | | 1 |
| WRK18901 | | | 25 | | | | | 149 | | | 2 | 16 | 66 | 258 |
| WST03610 | 1433 | | 22150 | 10 | | 8 | 8 | 6183 | 13 | 14 | 74 | 2714 | 20915 | 53522 |
| WTA16501 | | | | 1 | | | | 37 | | 1 | | 3 | 1 | 43 |
| WTG06910 | | | 544 | 12 | | 2 | 1 | 4536 | 3 | | 3 | 405 | 541 | 6047 |
| WTK33901 | 7 | | 282 | | | | 1 | 1322 | | | | 33 | 695 | 2340 |
| WTK33902 | 21 | | 138 | | | | | 193 | | | | 24 | 172 | 548 |
| WTR12001 | | 74 | 118 | 280 | | 1 | | 635 | | | 2 | 28 | | 1138 |
| WTT20301 | | | | | | | | | | | 1 | | | 1 |
| WVY23601 | | | 2 | | | | 1 | 4 | | | | | | 7 |
| Total | 2174 | 3626 | 61162 | 11459 | 2 | 55 | 55 | 110887 | 305 | 26 | 383 | 25008 | 41858 | 257000 |