

# Gas Registry Statistics – July 2011

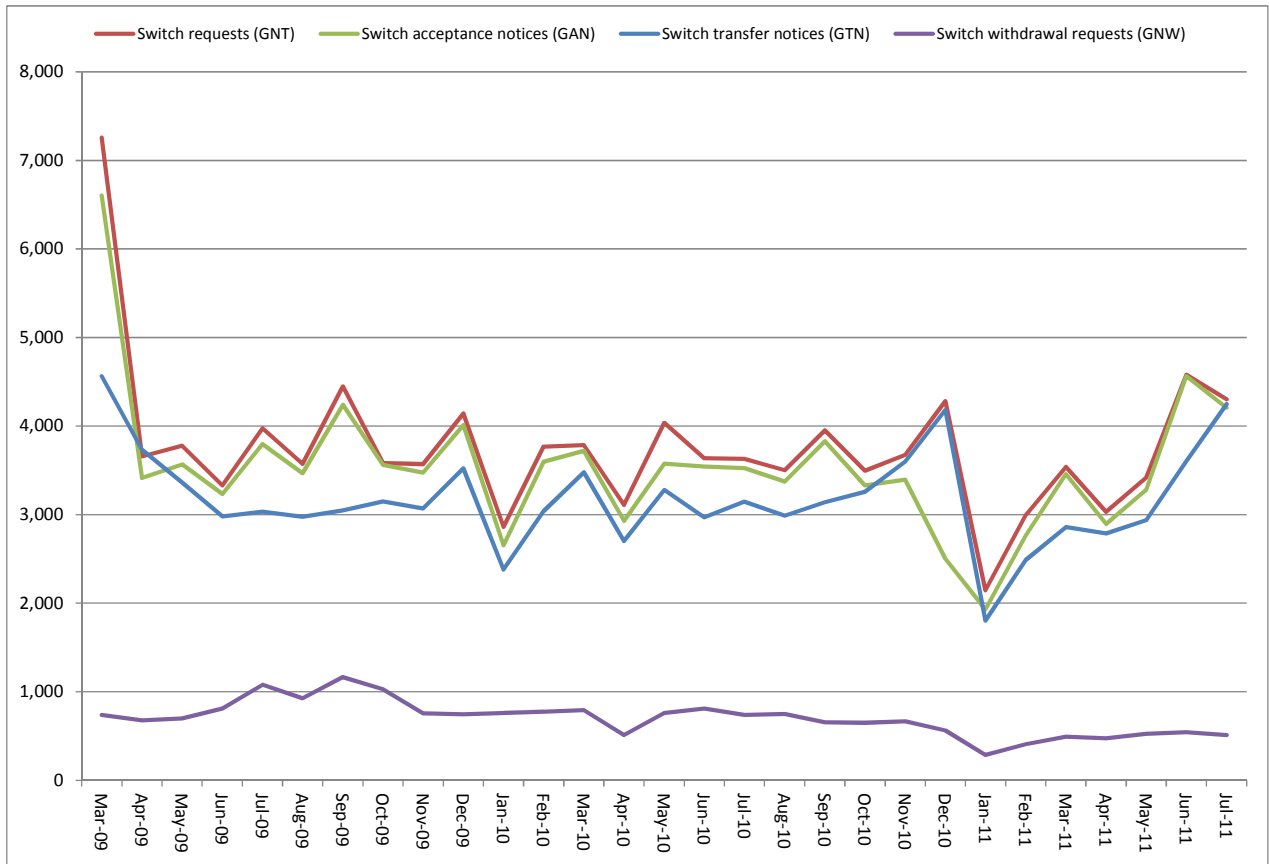
The following report provides statistics and charts illustrating gas registry usage, switching volumes and breakdowns of retailer, distributor and meter owner market shares. The information is provided in accordance with version 1.2 of the Determinations by the Industry Body (Gas Industry Co) under the Gas (Switching Arrangements) Rules 2008, dated 20 February 2009.

## Summary registry statistics – July 2011

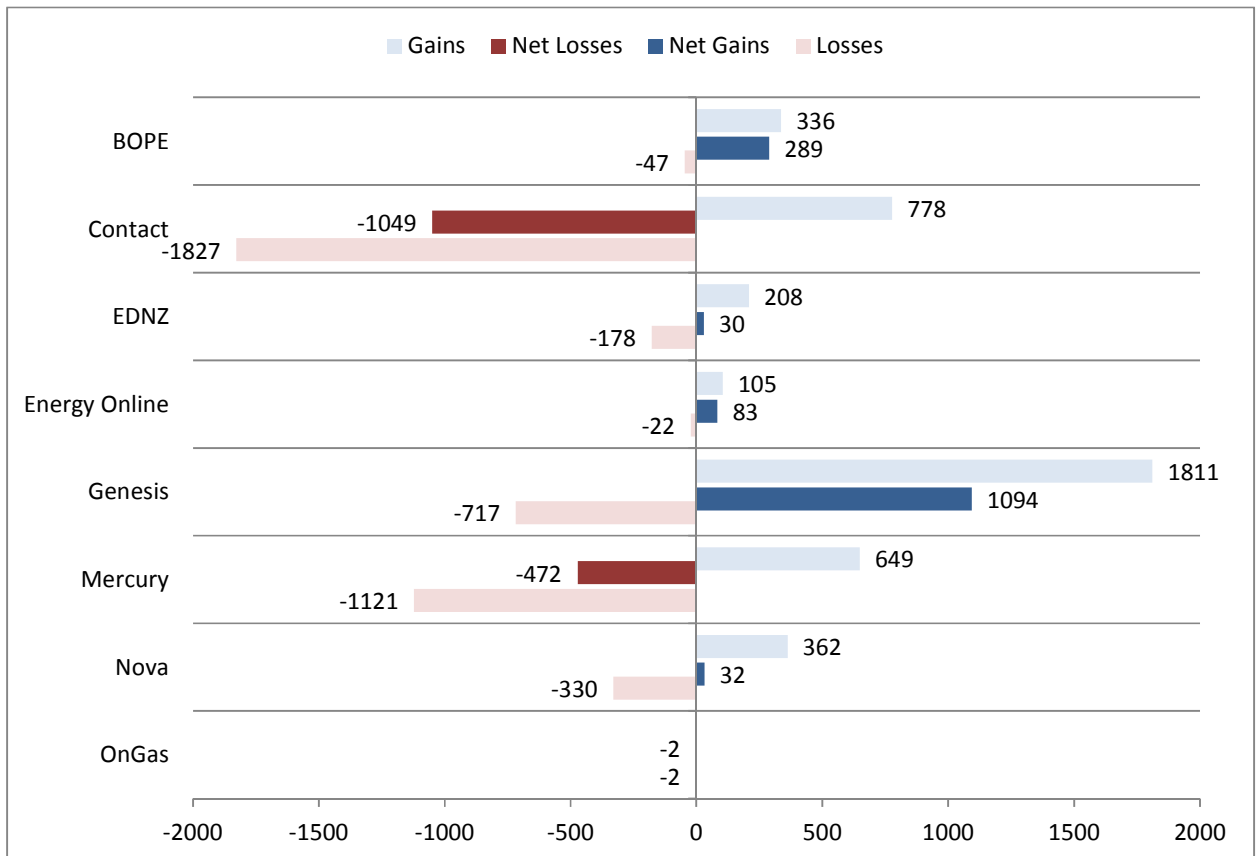
ICP enquiries processed in month (Online)	25,417
ICP enquiries processed in month (Offline)	12,772,830
<b>Total ICP enquiries processed in month</b>	<b>12,798,247</b>
ICPs added to the registry in month	365
ICPs changed in month	19,704
ICPs decommissioned in month	25
Valid standard switch requests (GNT-S) received in month	2,640
Valid move switch requests (GNT-SM) received in month	1,662
<b>Valid switch requests (GNT) received in month</b>	<b>4,302</b>
Valid switch acceptance notices (GAN) received in month	4,208
<b>Valid switch transfer notices (GTN) received in month</b>	<b>4,250</b>
Valid switch withdrawal requests (GNW) received in month	509
Valid switch withdrawal acceptances (GAW-A) received in month	487
Valid switch withdrawal rejections (GAW-R) received in month	20
Valid switch reading renegotiation requests (GNC) received in month	45
Valid switch reading renegotiation acceptances (GAC-A) received in month	40
Valid switch reading renegotiation rejections (GAC-R) received in month	2

Note: A switch transfer notice (GTN) is the last stage required to complete the switching process. This statistic indicates the number of switches completed in the month.

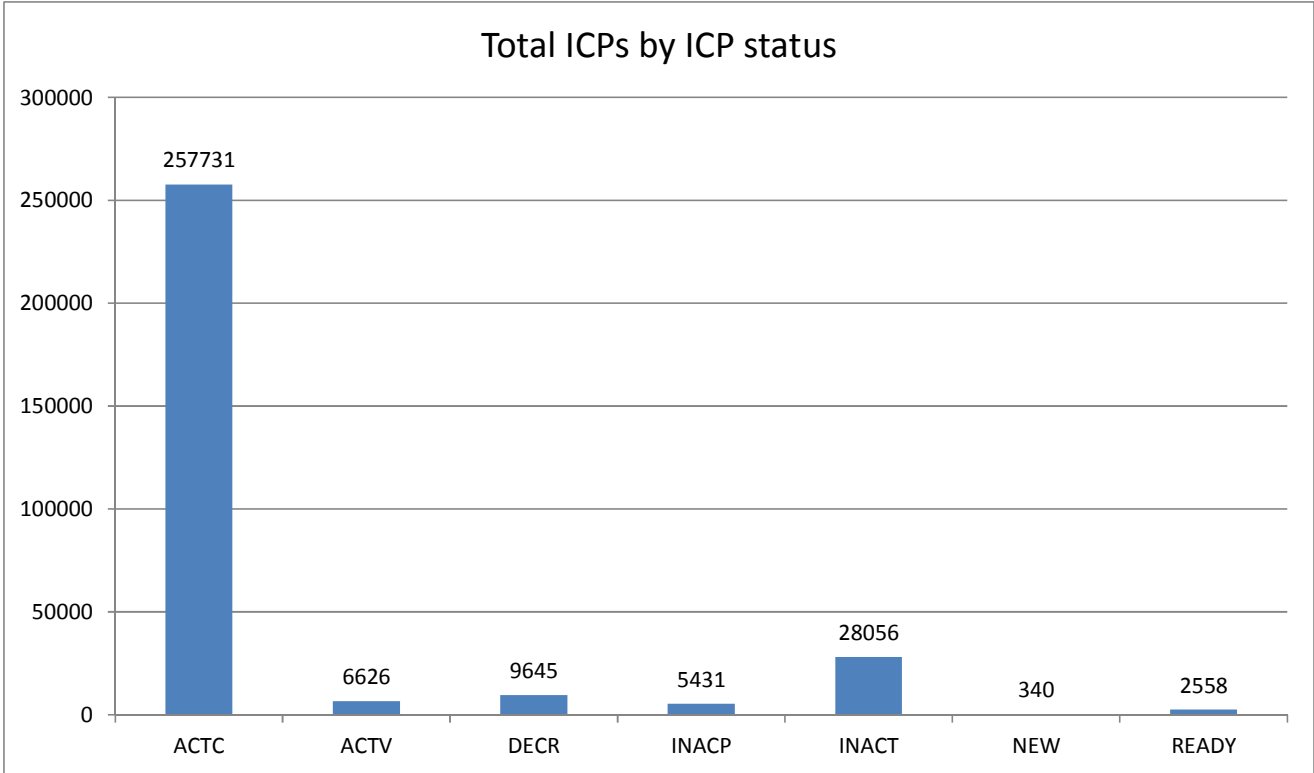
## Switching activity – historical



## Switching gains and losses – July 2011



# ICPs by status – July 2011



Installation control points (ICPs) are the record of customer installations in the gas registry. The meaning of the ICP status codes are as follows:

ACTC—Active contracted (gas is able to flow and the customer has a contract with a retailer)

ACTV—Active vacant (gas is able to flow and the premises is vacant)

DECR—Decommissioned

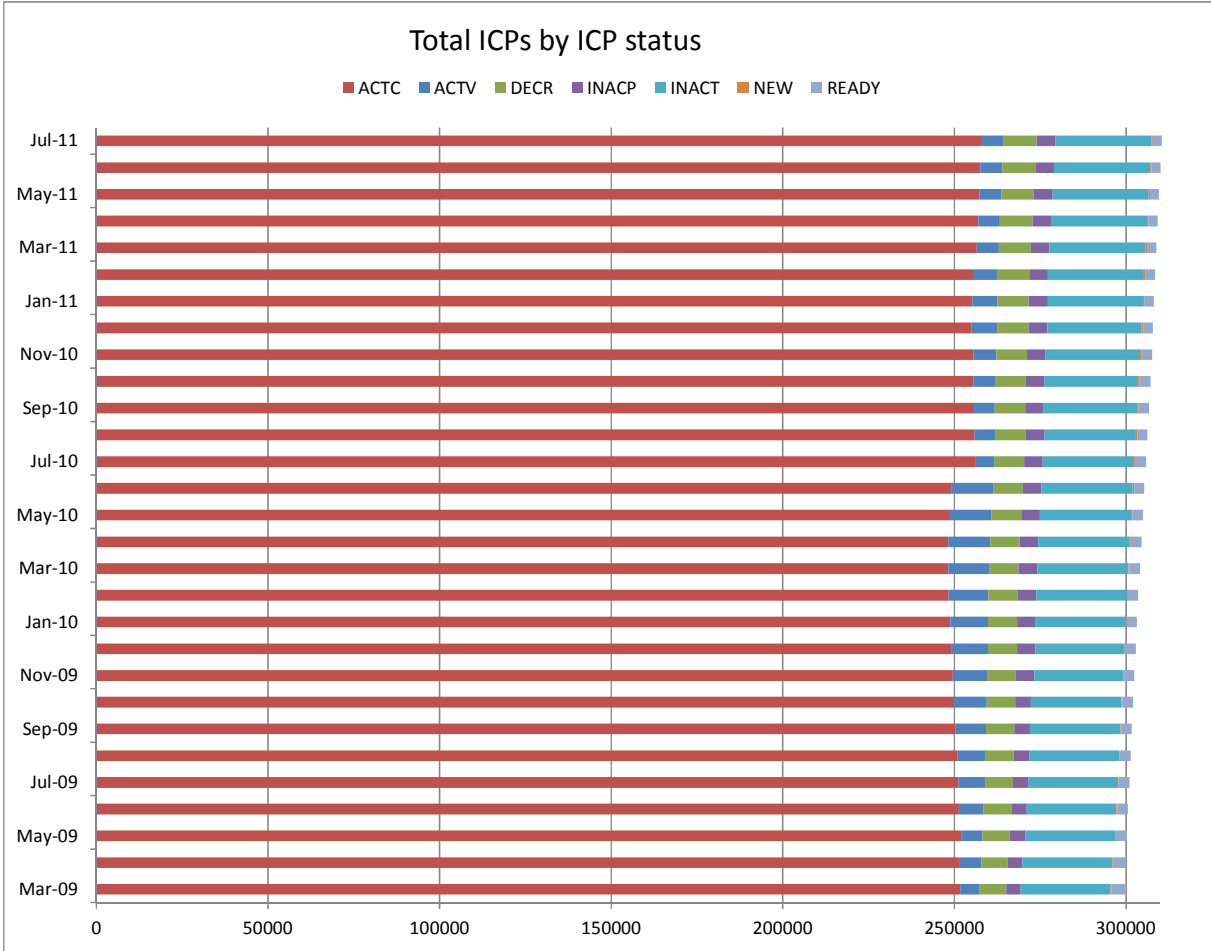
INACP—Inactive permanent (gas unable to flow due to a permanent disconnection)

INACT—Gas unable to flow due to a temporary disconnection

NEW—Newly created ICP, gas not yet able to flow

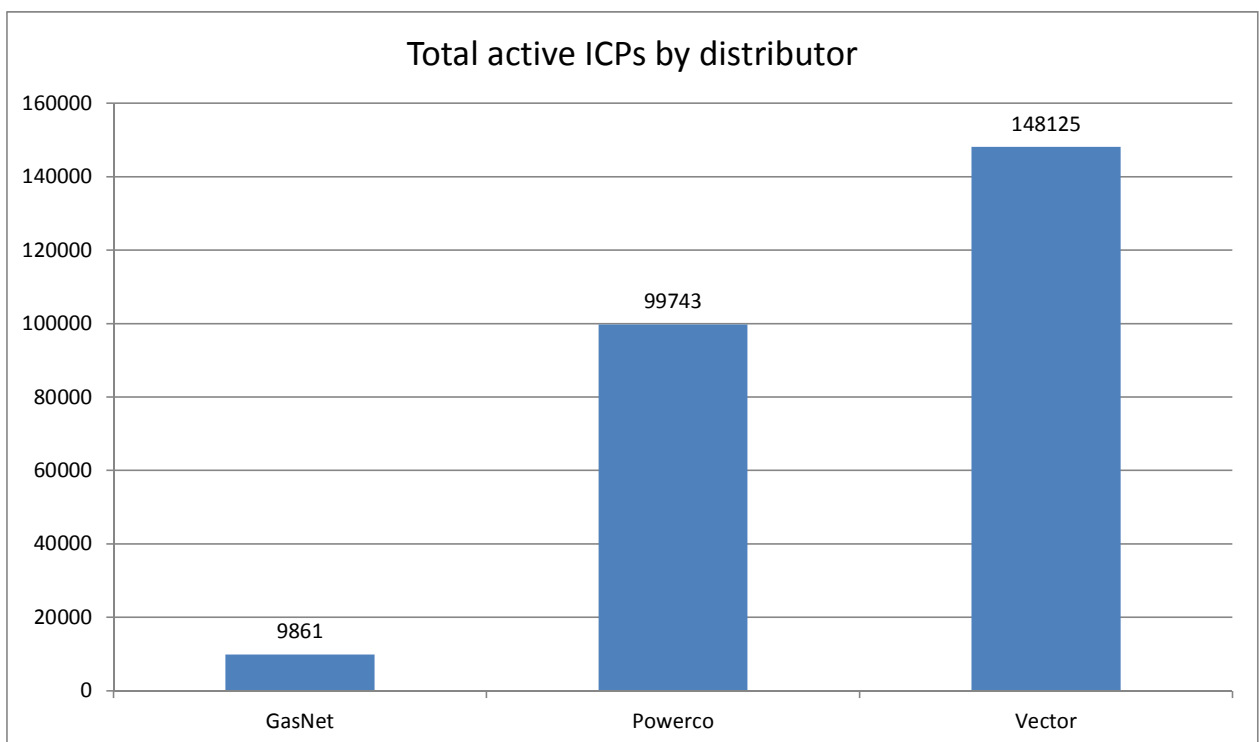
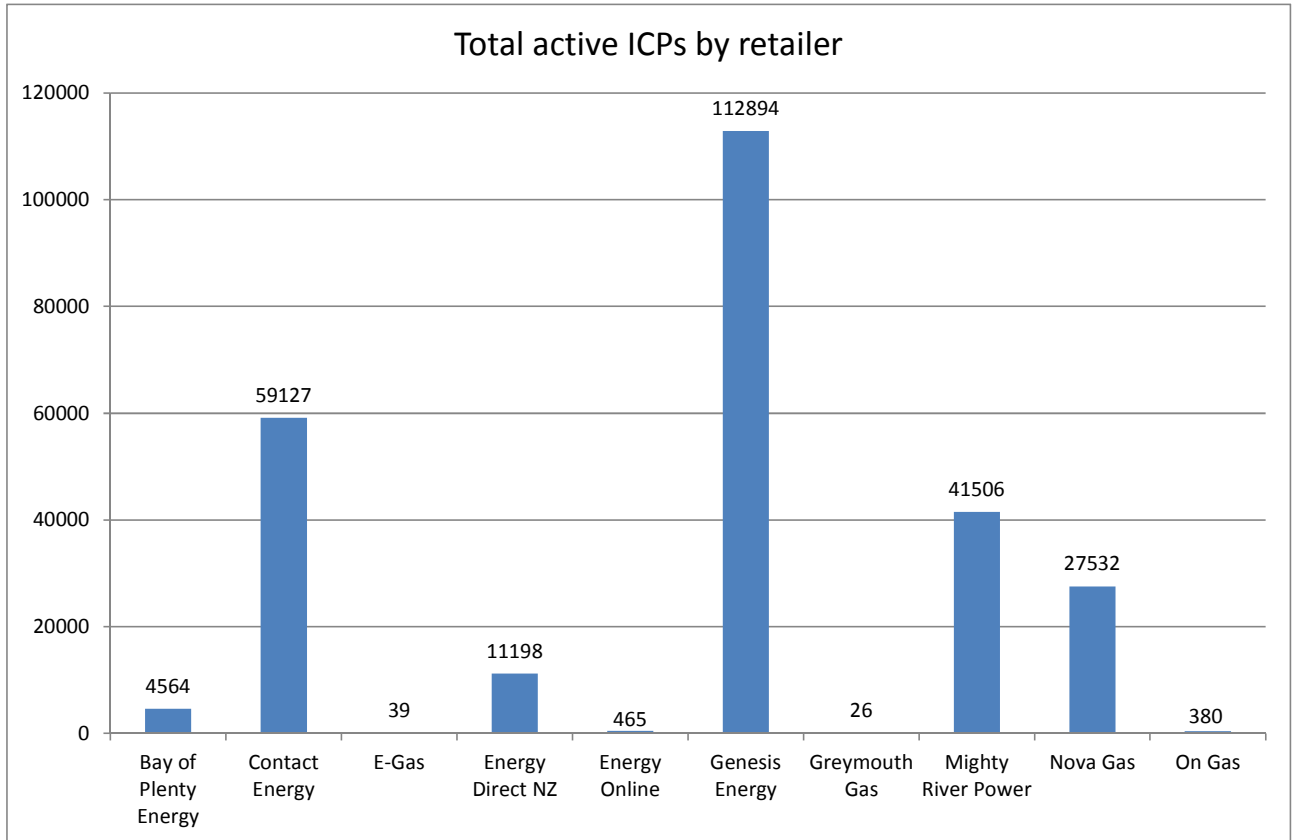
READY—New ICP, gas able to flow, awaiting uplift by retailer

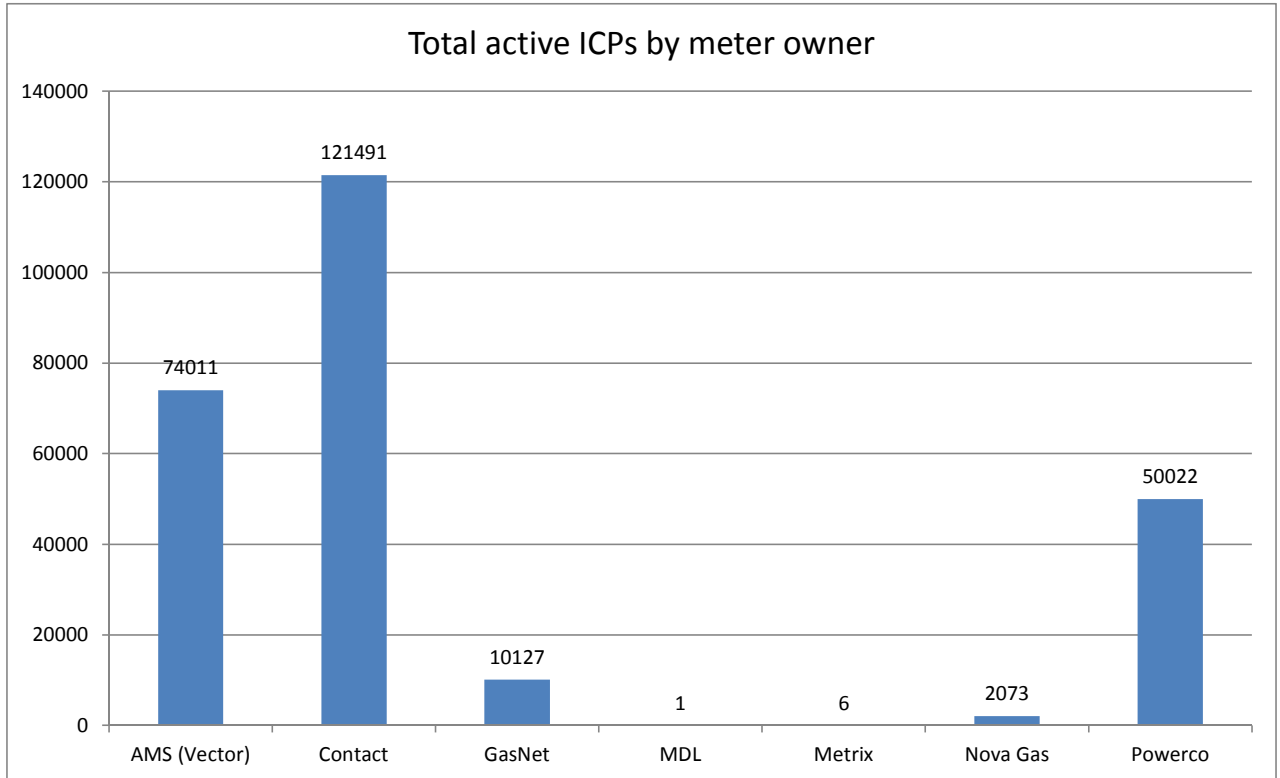
# ICPs by status – historical



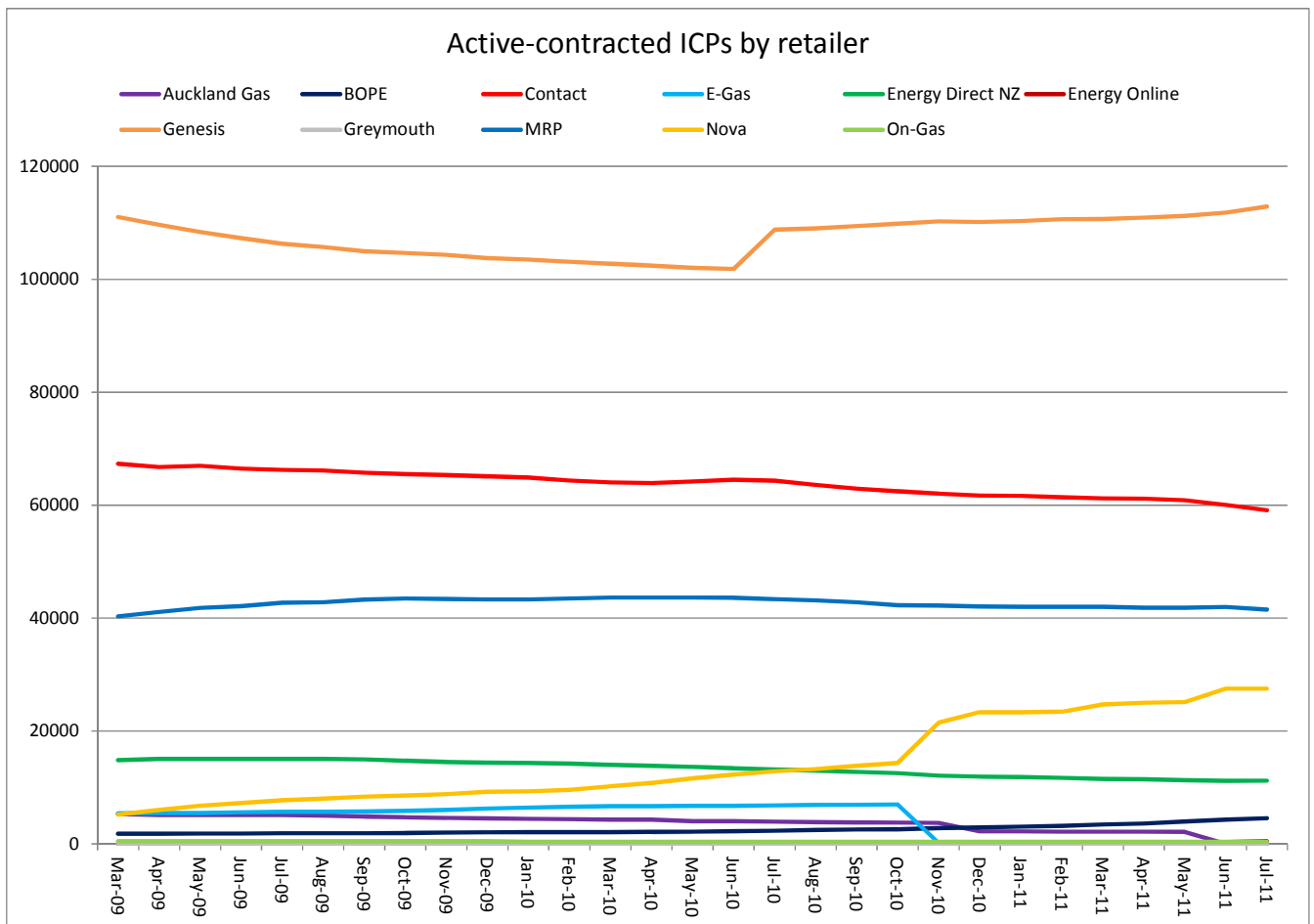
## Market shares – July 2011

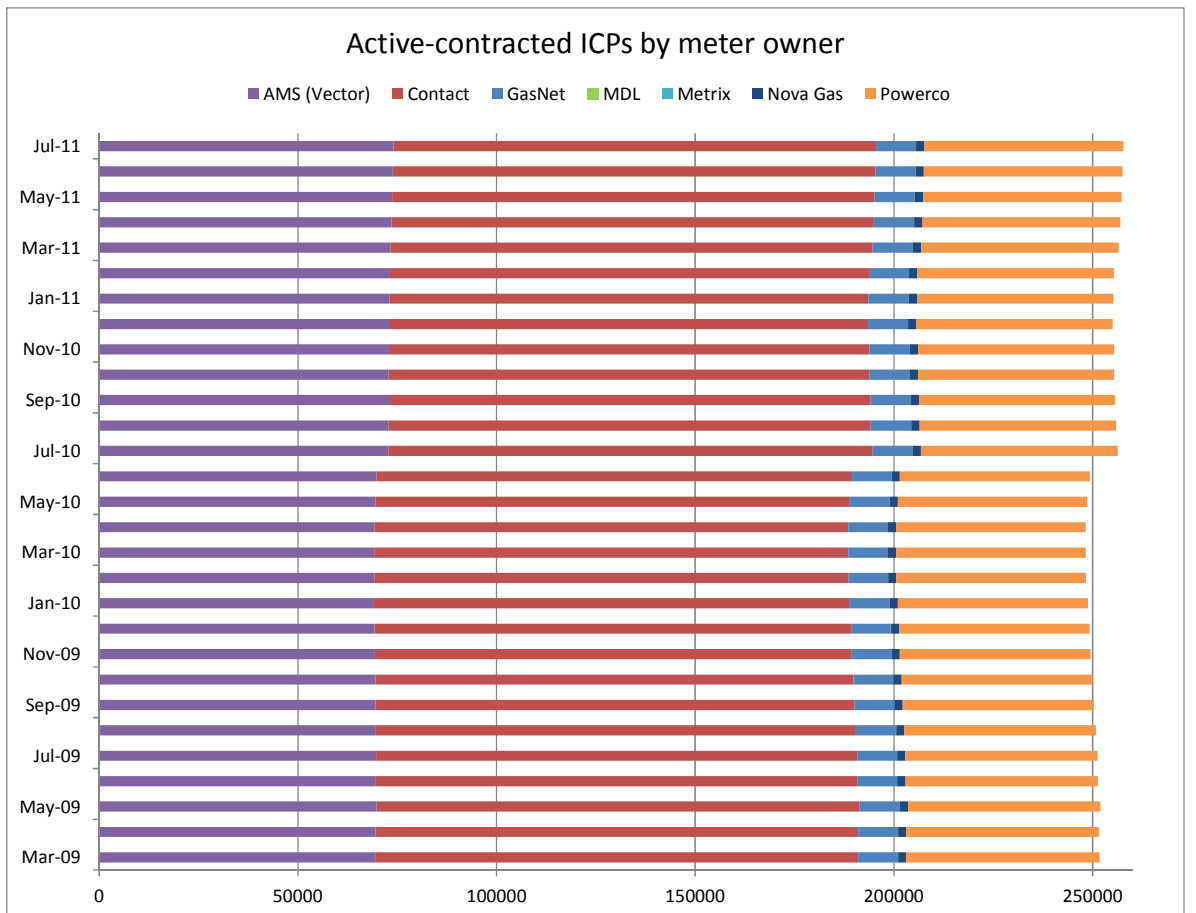
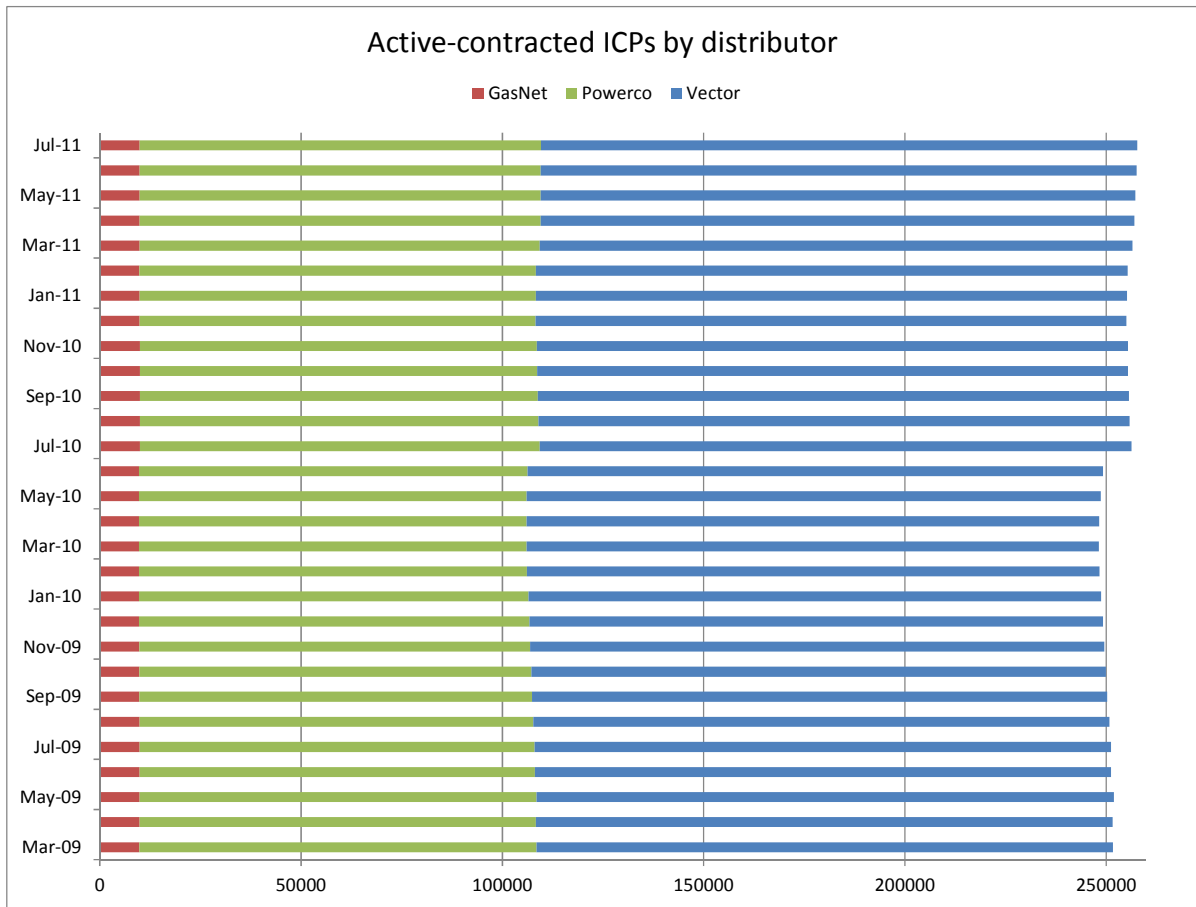
The following charts show the distribution of active-contracted ICPs by retailer, distribution company and meter owner respectively.





## Market shares – historical





## **Active-contracted ICPs by gas gate and retailer – July 2011**

The following table shows the distribution of active-contracted ICPs by gas gate, and the distribution by retailer at each gas gate.

The responsible retailer codes are as follows:

BOPE—Bay of Plenty Energy

CTCT—Contact Energy

EDNZ—Energy Direct NZ (Wanganui Gas)

EGLT—E-Gas Ltd

GEND—Genesis Energy

GENG—Genesis Energy

GEOL—Energy Online

GMTH—Greymouth Gas

GNGC—OnGas (Vector)

GNVG—Nova Gas

MEEN—Mighty River Power

The gas gate names associated with the codes used in the table can be found here:

[http://gasindustry.co.nz/sites/default/files/u14/All\\_Gas\\_Gates\\_301009.pdf](http://gasindustry.co.nz/sites/default/files/u14/All_Gas_Gates_301009.pdf)

Gas Gate	BOPE	CTCT	EDNZ	EGLT	GEND	GENG	GEOL	GMTH	GNGC	GNVG	MEEN	Total
ALF15501									1			<b>1</b>
ASH34301		53	33			59				60	8	<b>213</b>
BAL08201								1				<b>1</b>
BAL09626								1				<b>1</b>
BEL24510		1620	94		2	17325	14		9	1831	1663	<b>22558</b>
BMC17901		486	4		1	385	4		4	216	654	<b>1754</b>
BRO36301									1			<b>1</b>
CAM17201		80				1522				44	171	<b>1817</b>
DAN05001		76		1		8			1	21		<b>107</b>
DRU15101		14				4			1	8	3	<b>30</b>
DRU15102		10				10			4	7	15	<b>46</b>
EGC30701		1										<b>1</b>
EGC30702	2	1				2				1		<b>6</b>
ELM12301	28	41	32			223			3	5		<b>332</b>
FLD03001		396	208		2	439			1	645	25	<b>1716</b>
FLH21901		1	3			1						<b>5</b>
FOX22101		164	8		1	22	9		1	89	7	<b>301</b>
GIS07810		855	232		3	2034			3	157		<b>3284</b>
GLB03401									1			<b>1</b>
HAR11801						1			4			<b>5</b>
HEN74101		7107	9	5	4	5773	51	1	16	1283	6859	<b>21108</b>
HPS02993					1							<b>1</b>
HRU16101					1	1				2		<b>4</b>

Gas Gate	BOPE	CTCT	EDNZ	EGLT	GEND	GENG	GEOL	GMTH	GNGC	GNVG	MEEN	Total
HST05210		2494	272	2	2	437	163		6	1001		<b>4377</b>
HTK08301		9				151				2	8	<b>170</b>
HTL16601		3			1	90			3	5	3	<b>105</b>
HTV11301	12	1734	3	4	3	22592			50	494	2075	<b>26967</b>
HUN15301			1						2	1		<b>4</b>
HWA20801	113	432	329	1		1838	1		4	63		<b>2781</b>
IGW11901	110	59	80			310				12		<b>571</b>
KAP12901		2				2						<b>4</b>
KAW04405	130	7	1			108				5		<b>251</b>
KAW04410									1			<b>1</b>
KAW04411									1			<b>1</b>
KIG16801		4								1	1	<b>6</b>
KIH19101		50			1	1236			1	37	37	<b>1362</b>
KIN02601						4			2		1	<b>7</b>
KIN04310									1			<b>1</b>
KIW34201								1				<b>1</b>
KIW34202						1			1			<b>2</b>
KKI23701		2								1		<b>3</b>
KPA12401	3	3	5			47						<b>58</b>
KRG24101		1	1							2		<b>4</b>
KTK23901									1			<b>1</b>
KUK22401		6				19				4		<b>29</b>
KUR33601									1			<b>1</b>

Gas Gate	BOPE	CTCT	EDNZ	EGLT	GEND	GENG	GEOL	GMTH	GNGC	GNVG	MEEN	Total
LAB20201		9	62			40				6	1	<b>118</b>
LCF20010		1										<b>1</b>
LNB24301		60	33		1	105			4	87	11	<b>301</b>
LVN24401		1656	102			330	92		5	616	72	<b>2873</b>
MGK05401								1				<b>1</b>
MMU08001	428	136	1	1	4	3152		1	3	148	316	<b>4190</b>
MNA23402	10	32	34			161				4		<b>241</b>
MNG34001									1			<b>1</b>
MRV16301		1										<b>1</b>
MRV16302	1	43				553				22	68	<b>687</b>
MSD01801		1										<b>1</b>
MSD01802									1			<b>1</b>
MTG17301		2				32					2	<b>36</b>
MTN23801		59	230			151	1		2	13		<b>456</b>
MTP20601		1				5						<b>6</b>
MUT19001									1			<b>1</b>
NGW14501		11				138				2	5	<b>156</b>
NPL12101	2093	866	1571	1	2	6124	1		6	205		<b>10869</b>
NPS00530		1										<b>1</b>
OAK18601						1						<b>1</b>
OKA13201	4	6	7			41				1		<b>59</b>
OKS32801										1	1	<b>2</b>
OKU16701	30	24	45			127				2		<b>228</b>

Gas Gate	BOPE	CTCT	EDNZ	EGLT	GEND	GENG	GEOL	GMTH	GNGC	GNVG	MEEN	Total
OPK13001	11	25	14			128						<b>178</b>
OPO32001	48	4			1	55				3		<b>111</b>
ORD24701		1	1							1		<b>3</b>
OTA22601		59	3	1		296				25	5	<b>389</b>
OTB00301		1										<b>1</b>
OTO14101		4				161				15		<b>180</b>
PAH23101						17						<b>17</b>
PAH23201						1				1		<b>2</b>
PAP06603		37			1	23				6	55	<b>122</b>
PAP06610		4177	7	1	3	830	8	1	56	674	3291	<b>9048</b>
PAU20101		520	47			2406			2	192	82	<b>3249</b>
PGH15901		1										<b>1</b>
PGU13101						14						<b>14</b>
PHT04901		40				37			1	11		<b>89</b>
PIR31101		1				44					3	<b>48</b>
PLN24201		3274	1206	3	1	3951	21		21	6341	240	<b>15058</b>
PPA33201		1				8						<b>9</b>
PTA20901	15	15	22			131			2	3		<b>188</b>
PTR32601	4	11	1			294			1	16	11	<b>338</b>
PUK04201		62			1	23	2			37	55	<b>180</b>
RAG33401										1		<b>1</b>
RAM15201		1							2			<b>3</b>
ROT08101	265	279	1	3		2742			12	212	425	<b>3939</b>

Gas Gate	BOPE	CTCT	EDNZ	EGLT	GEND	GENG	GEOL	GMTH	GNGC	GNVG	MEEN	Total
RPR30801		2				20				1	1	<b>24</b>
STR10201	91	80	80		1	633				20		<b>905</b>
TAC31001									1			<b>1</b>
TAT16401								1				<b>1</b>
TAU07001	102	269	3	1		1371			1	155	163	<b>2065</b>
TCC00201		1										<b>1</b>
THO22701		2				11				2		<b>15</b>
TIR33501		1										<b>1</b>
TIR33502	2	3		1		55				11	4	<b>76</b>
TKN17001		1				141			1	9		<b>152</b>
TKP05101										1		<b>1</b>
TKR19701	4	58	2			872			1	52	34	<b>1023</b>
TKS17401		1				18		1	2	1		<b>23</b>
TPK33301	27	5	1		1	531				23	23	<b>611</b>
TRC02003		1										<b>1</b>
TRG07701	603	146	3	1		3115			6	225	256	<b>4355</b>
TTK30601	1	1				4						<b>6</b>
TUK06501		5				1	1		2	2	1	<b>12</b>
TWA35610		8111	174	5	7	10304	26		30	7360	2473	<b>28490</b>
WAG21501		476	5943	2		2707	2	2	2	147		<b>9281</b>
WAK22801		198	21			1189				64	9	<b>1481</b>
WEL18301		2				19				3	2	<b>26</b>
WHG07501		95	3			925			5	98	86	<b>1212</b>

Gas Gate	BOPE	CTCT	EDNZ	EGLT	GEND	GENG	GEOL	GMTH	GNGC	GNVG	MEEN	Total
WHK32101	240	12		1		152			3	35	10	<b>453</b>
WKE19201									1			<b>1</b>
WRK18901		32				149			2	16	60	<b>259</b>
WST03610		21422	18	3	8	7128	59	14	73	4139	20847	<b>53711</b>
WTA16501			1			38		1		3	1	<b>44</b>
WTG06910		535	27	1	1	4563	9		3	409	522	<b>6070</b>
WTK33901		311				1330				42	672	<b>2355</b>
WTK33902		137				201				44	169	<b>551</b>
WTR12001	187	85	220	1		593	1		2	28		<b>1117</b>
WTT20301									1			<b>1</b>
WVY23601		2			1	4						<b>7</b>
<b>Total</b>	<b>4564</b>	<b>59127</b>	<b>11198</b>	<b>39</b>	<b>55</b>	<b>112839</b>	<b>465</b>	<b>26</b>	<b>380</b>	<b>27532</b>	<b>41506</b>	<b>257731</b>