

Gas Registry statistics – March 2011

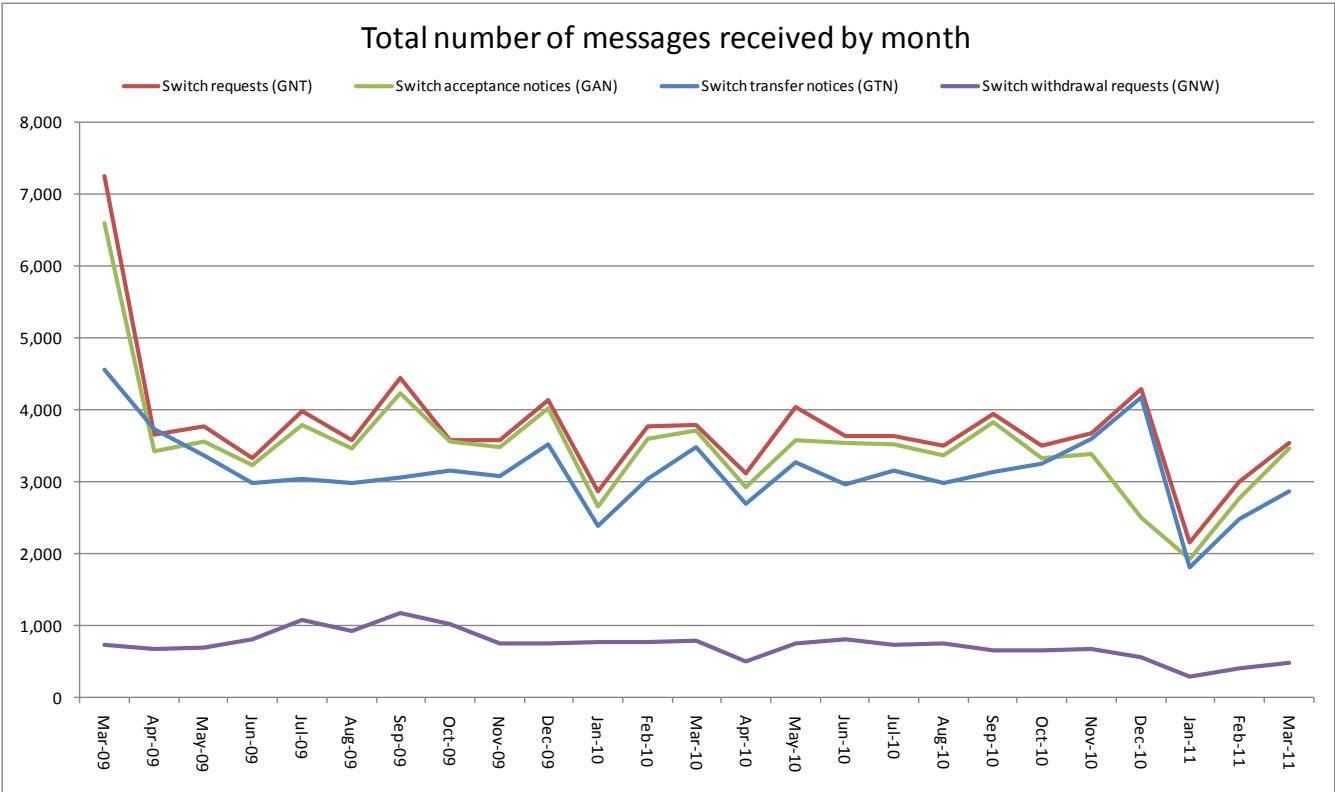
The following report provides statistics and charts illustrating gas registry usage, switching volumes and breakdowns of retailer, distributor and meter owner market shares. The information is provided in accordance with version 1.2 of the Determinations by the Industry Body (Gas Industry Co) under the Gas (Switching Arrangements) Rules 2008, dated 20 February 2009.

Summary registry statistics – March 2011

ICP enquiries processed in month (Online)	25,643
ICP enquiries processed in month (Offline)	11,737,314
Total ICP enquiries processed in month	11,762,957
ICPs added to the Registry in month	403
ICPs changed in month	1,692
ICPs decommissioned in month	12
Valid standard switch requests (GNT-S) received in month	1,829
Valid move switch requests (GNT-SM) received in month	1,709
Valid switch requests (GNT) received in month	3,538
Valid switch acceptance notices (GAN) received in month	3,458
Valid switch transfer notices (GTN) received in month	2,860
Valid switch withdrawal requests (GNW) received in month	491
Valid switch withdrawal acceptances (GAW-A) received in month	461
Valid switch withdrawal rejections (GAW-R) received in month	13
Valid switch reading renegotiation requests (GNC) received in month	53
Valid switch reading renegotiation acceptances (GAC-A) received in month	53
Valid switch reading renegotiation rejections (GAC-R) received in month	2

Note: A switch transfer notice (GTN) is the last stage required to complete the switching process. This statistic indicates the number of switches completed in the month.

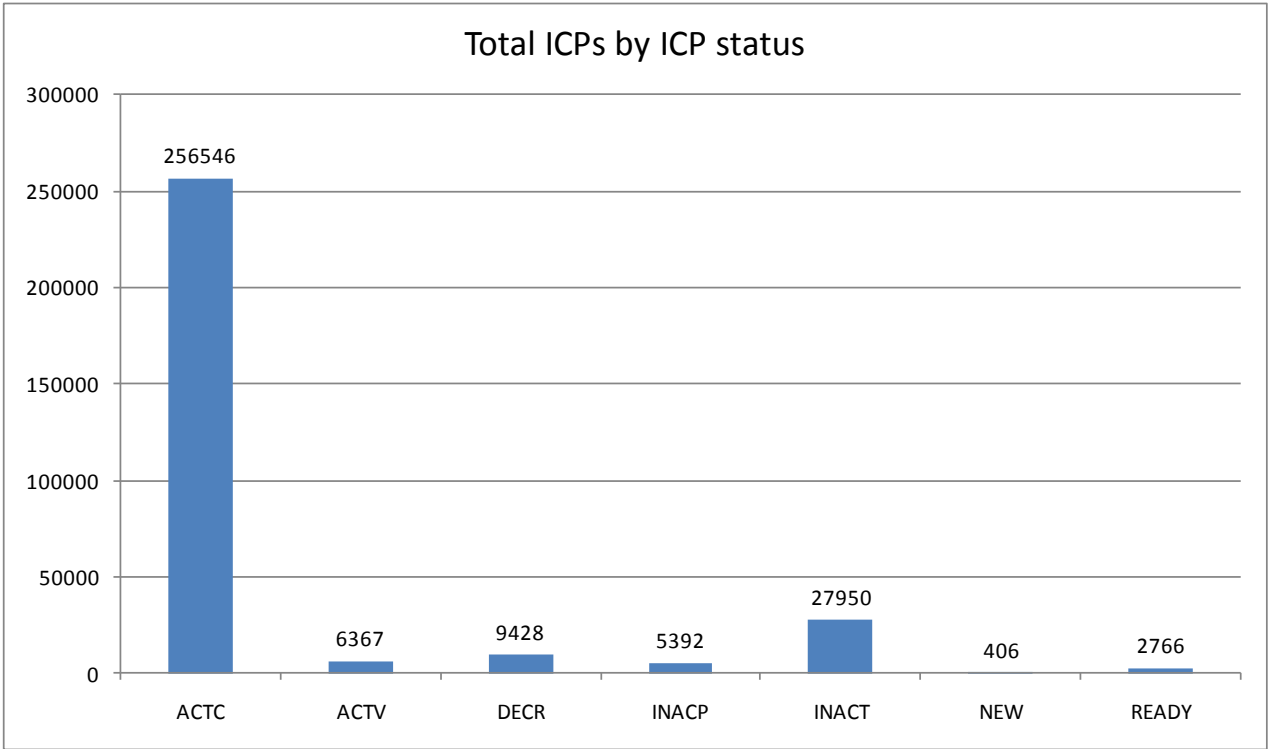
Switching activity – historical



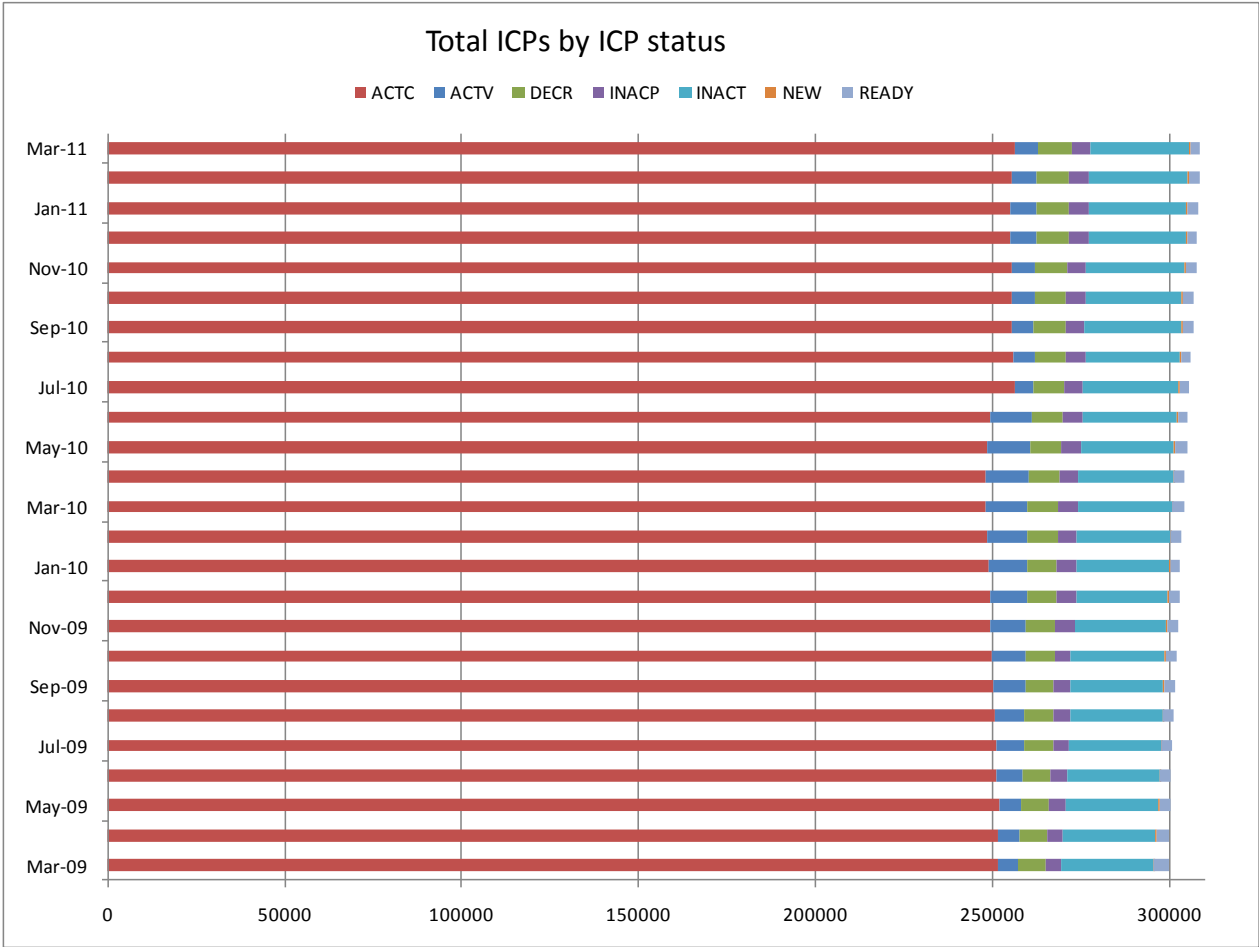
ICPs by status – March 2011

The meaning of the ICP status codes are as follows:

- ACTC—Active contracted (gas is able to flow and the customer has a contract with a retailer)
- ACTV—Active vacant (gas is able to flow and the premises is vacant)
- DECR—Decommissioned
- INACP—Inactive permanent (gas unable to flow due to a permanent disconnection)
- INACT—Gas unable to flow due to a temporary disconnection
- NEW—Newly created ICP, gas not yet able to flow
- READY—New ICP, gas able to flow, awaiting uplift by retailer

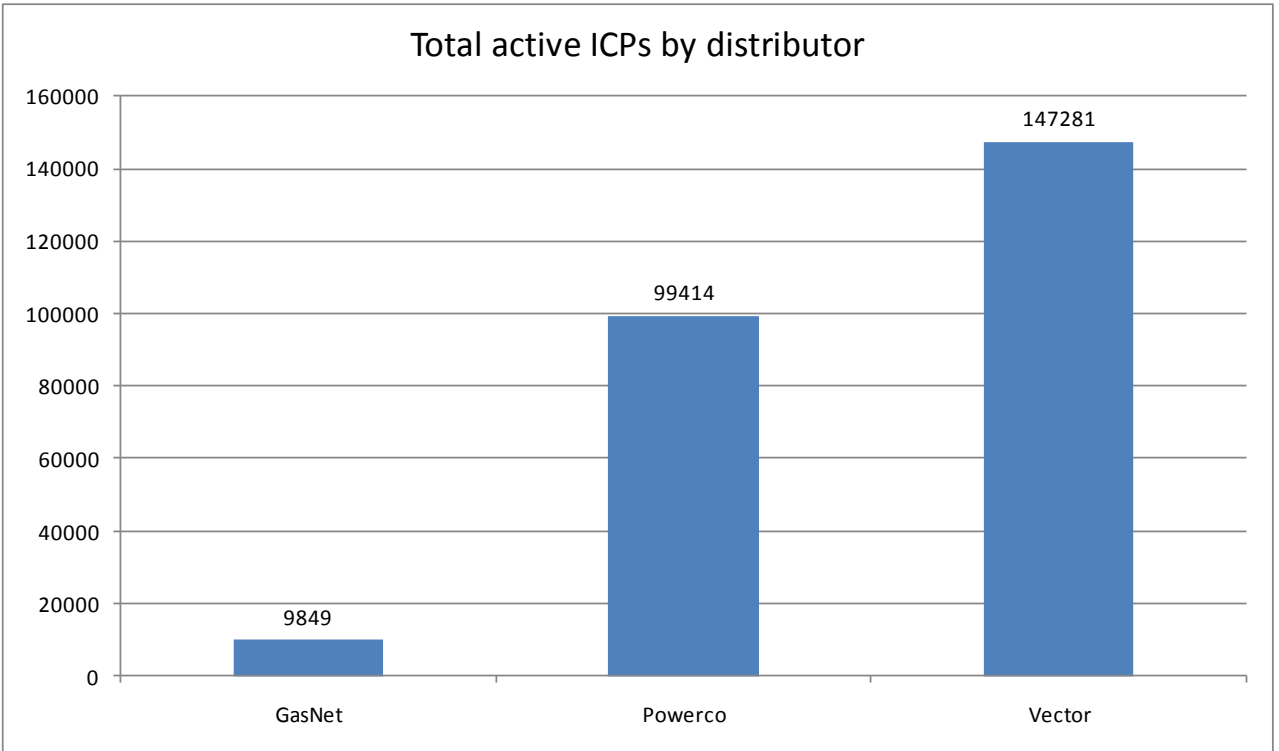
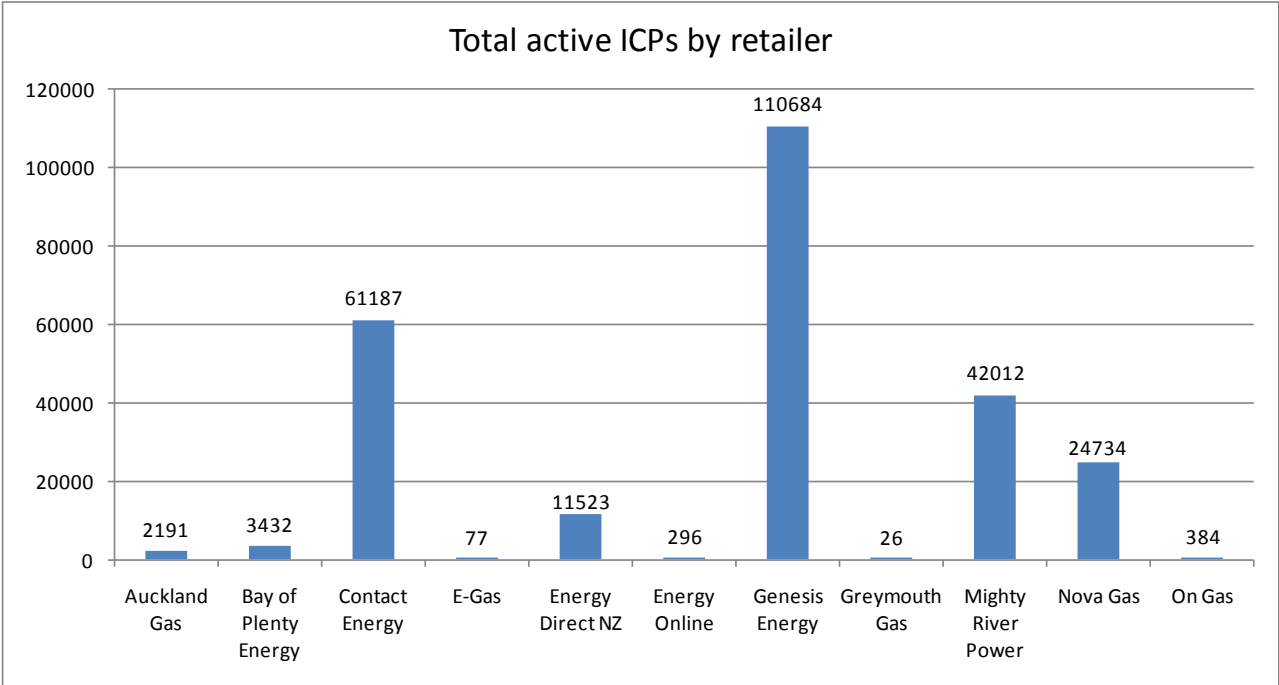


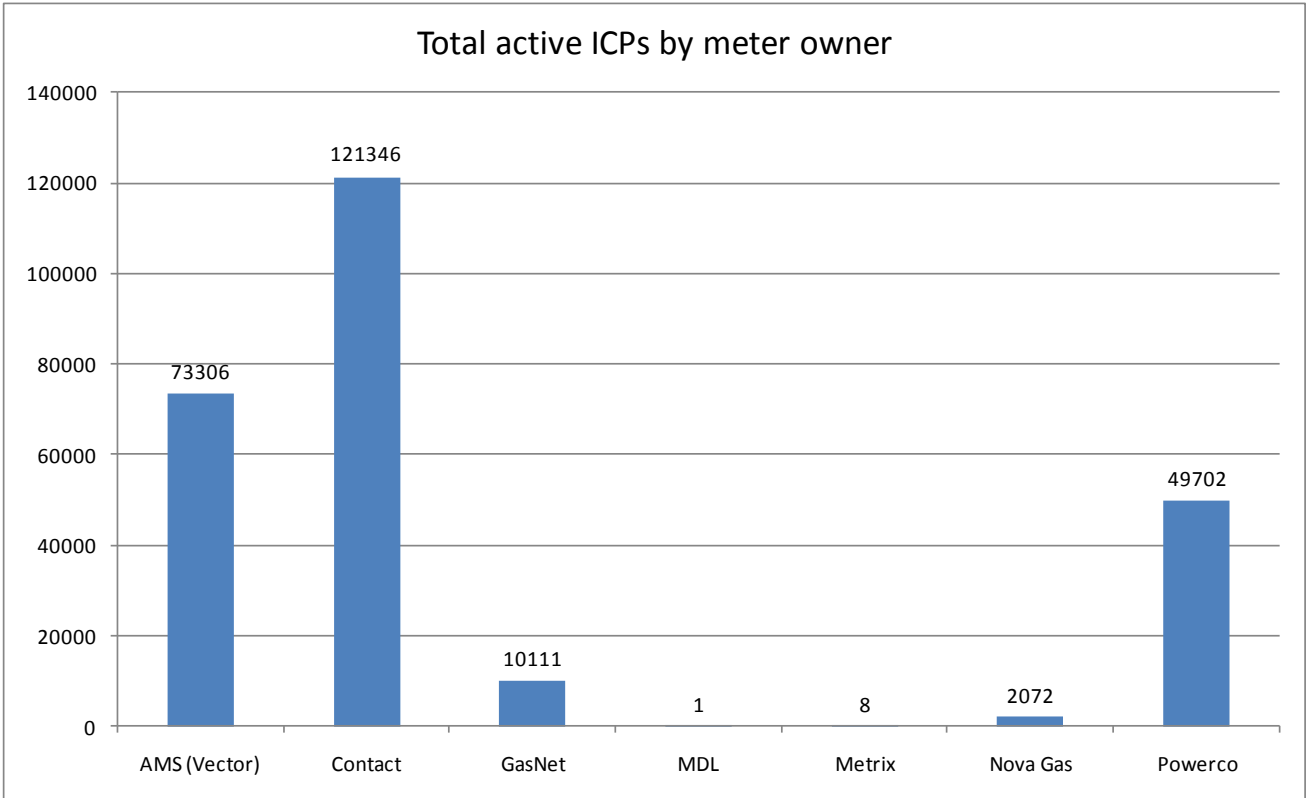
ICPs by status – historical



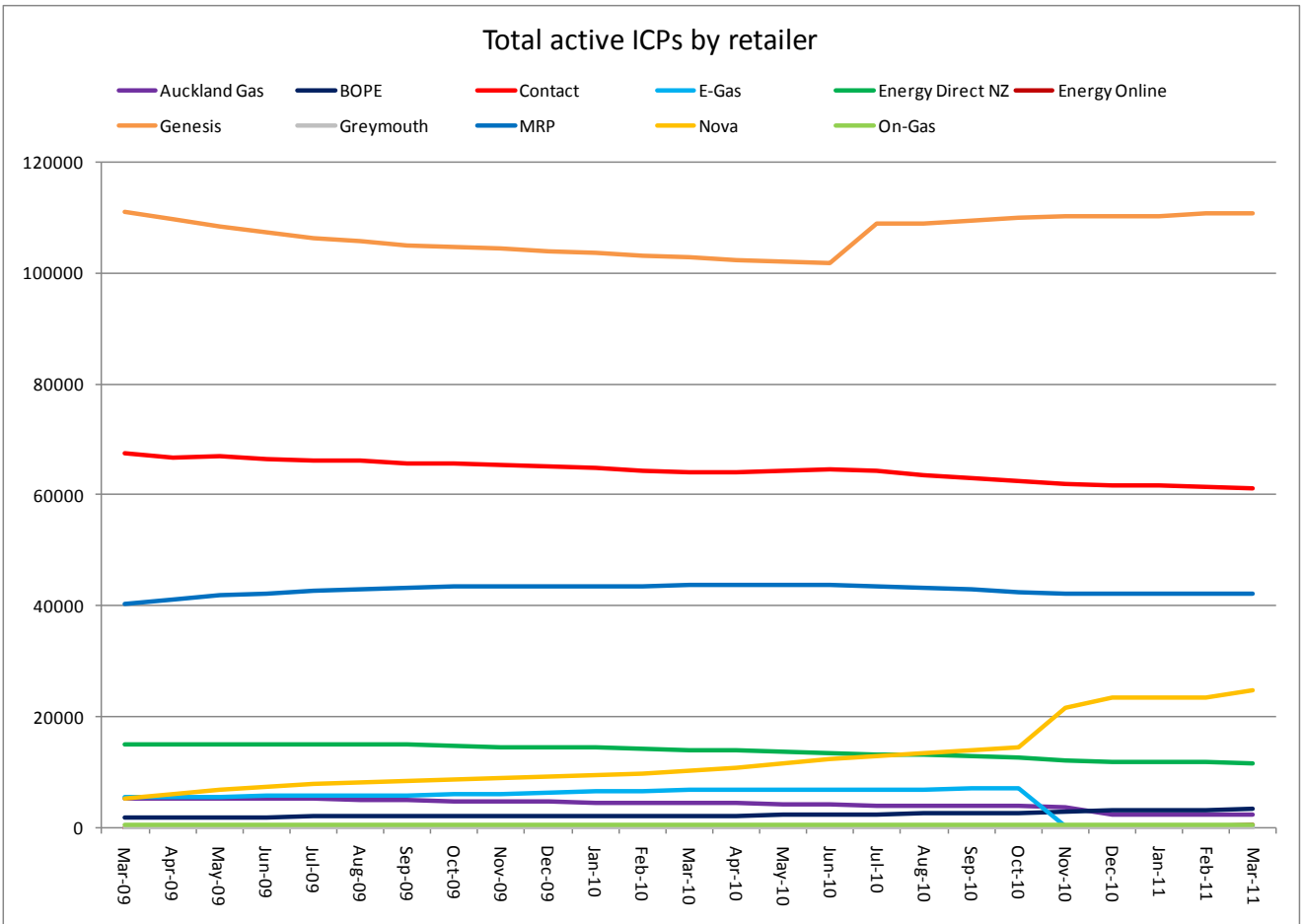
Market shares – March 2011

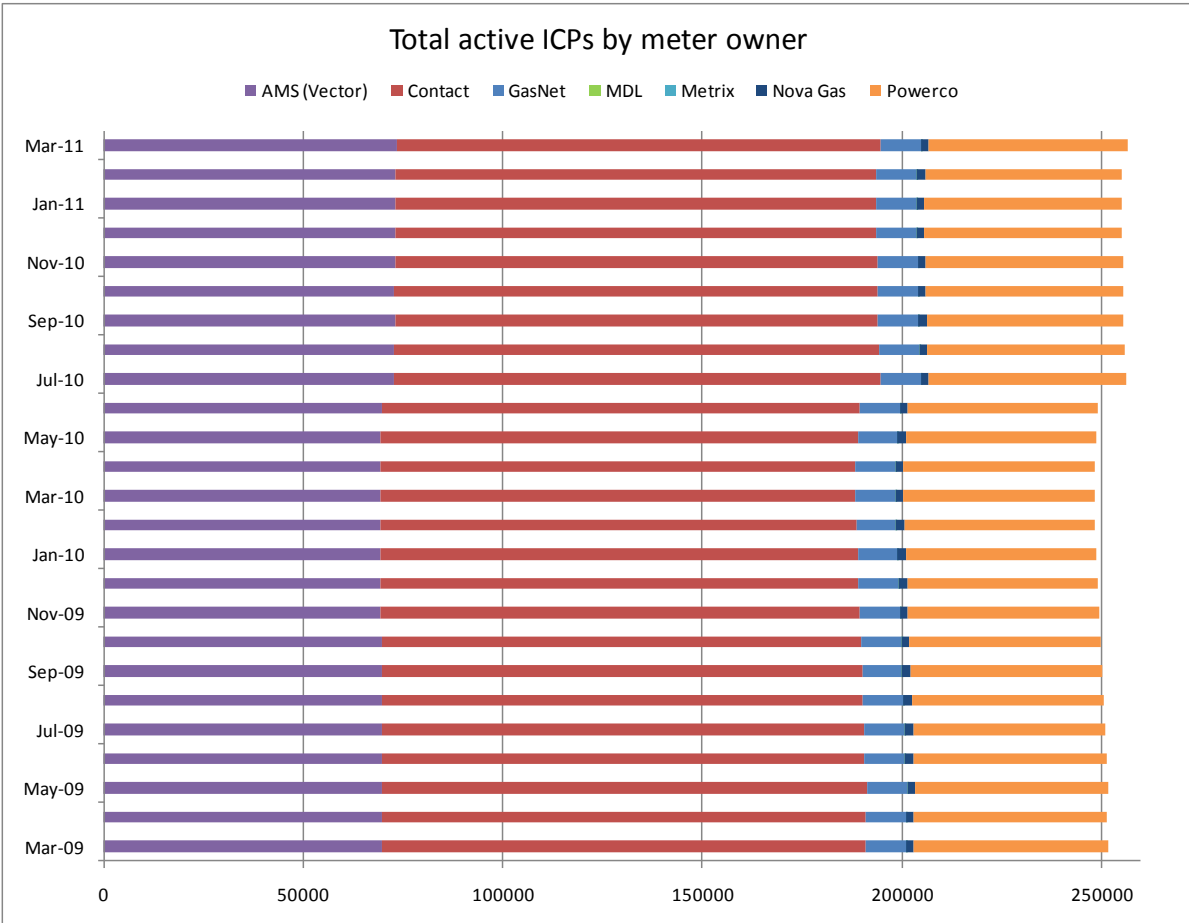
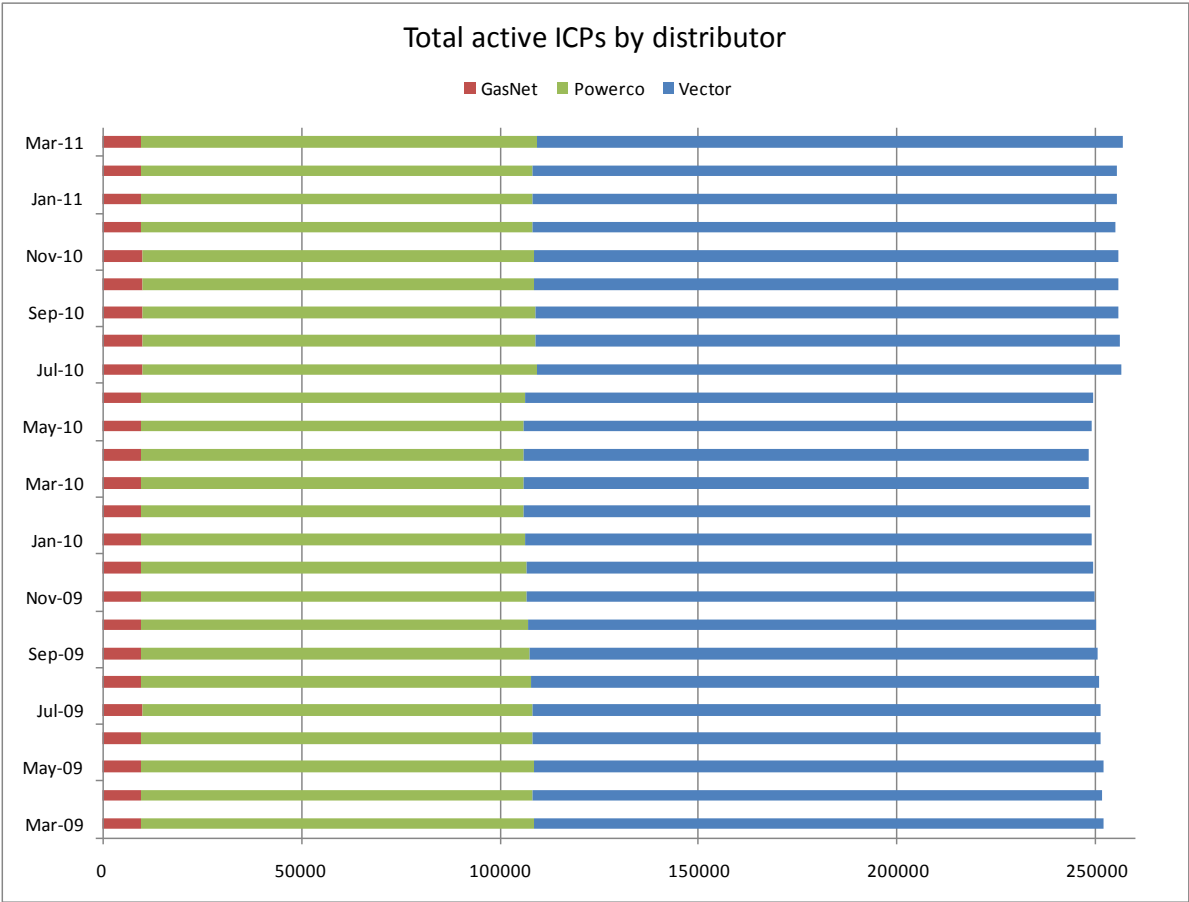
The following charts show the distribution of active-contracted ICPs by retailer, distribution company and meter owner respectively.





Market shares – historical





Active ICPs by gas gate and responsible retailer – March 2011

The following table shows the distribution of active ICPs by gas gate, and the distribution by retailer at each gas gate.

The responsible retailer codes are as follows:

AGCL—Auckland Gas Company

BOPE—Bay of Plenty Energy

CTCT—Contact Energy

EGAS—E-Gas 2000

EGLT—E-Gas Ltd

EDNZ—Energy Direct NZ (Wanganui Gas)

GENG—Genesis Energy

GEND—Genesis Energy

GEOL—Energy Online

GMTH—Greymouth Gas

MEEN—Mighty River Power

GNVG—Nova Gas

GNGC—OnGas (Vector)

Gas Gate	AGCL	BOPE	CTCT	EDNZ	EGAS	EGLT	GEND	GENG	GEOL	GMTH	GNGC	GNVG	MEEN	Total
ALF15501											1			1
ASH34301			54	32				56				60	8	210
BAL08201										1				1
BAL09626										1				1
BEL24510			1664	37	1	2	2	17336	6		10	1907	1577	22542
BMC17901	68		458	2			1	355	1		4	155	690	1734
BRO36301											1			1
CAM17201			75					1487				46	170	1778
DAN05001			75			1		9			1	22		108
DRU15101			12					3			2	8	3	28
DRU15102			7					9			4	5	5	30
EGC30701			1											1
EGC30702		2	1					3				1		7
ELM12301		10	49	38				234			3	5		339
FLD03001			405	202			2	420			1	654	29	1713
FLH21901			1	3				2						6
FOX22101			218	11			1	24	4		1	24	15	298
GIS07810			835	228		3	3	2061			3	161		3294
GLB03401											1			1
HAR11801								1			4			5
HEN74101	476		7110	4	1	8	4	5447	19	1	16	810	7057	20953
HPS02993							1							1
HRU16101							1	1				2		4

Gas Gate	AGCL	BOPE	CTCT	EDNZ	EGAS	EGLT	GEND	GENG	GEOL	GMTH	GNGC	GNVG	MEEN	Total
HST05210			3084	300		2	2	384	149		6	446		4373
HTK08301			4					25				1	5	35
HTL16601			4				1	102			3	5	4	119
HTV11301	1	11	1581			7	3	22578			50	509	2180	26920
HUN15301	1			1							2			4
HWA20801		77	438	325		2		1873			4	67		2786
IGW11901		36	82	102				330				12		562
KAP12901			2					2						4
KAW04405		129	7	1				110				5		252
KAW04410											1			1
KAW04411											1			1
KIG16801			4									1	1	6
KIH19101			44			2	1	1219			1	38	44	1349
KIN02601								4			2		1	7
KIN04310											1			1
KIW34201										1				1
KIW34202								1			1			2
KKI23701			2									1		3
KPA12401		3	2	5				52						62
KRG24101			1	1								2		4
KTK23901											1			1
KUK22401			6					18				4		28
KUR33601											1			1

Gas Gate	AGCL	BOPE	CTCT	EDNZ	EGAS	EGLT	GEND	GENG	GEOL	GMTH	GNGC	GNVG	MEEN	Total
LAB20201			8	63				38				6	1	116
LCF20010			1											1
LNB24301			56	30			1	101			4	90	10	292
LVN24401			2045	125		1		301	74		5	194	92	2837
MGK05401										1				1
MMU08001	1	423	117			1	4	3135		1	3	151	324	4160
MNA23402		2	38	33				171				4		248
MRV16301			1					1						2
MRV16302			34			1		552				23	73	683
MSD01801			1											1
MSD01802											1			1
MTG17301			1					33					1	35
MTN23801			59	240				147	1		2	14		463
MTP20601								5						5
MUT19001											1			1
NGW14501			13					136				2	6	157
NPL12101		1328	1028	1852		1	1	6310	1		6	240		10767
NPS00530			1											1
OAK18601								1						1
OKA13201		2	8	7				41				1		59
OKS32801												1	1	2
OKU16701		15	32	50				123				2	1	223
OPK13001		6	28	15				129						178

Gas Gate	AGCL	BOPE	CTCT	EDNZ	EGAS	EGLT	GEND	GENG	GEOL	GMTH	GNGC	GNVG	MEEN	Total
OPO32001		50	4				1	53				3		111
ORD24701			1	1								1		3
OTA22601			51	3		2		296				25	6	383
OTB00301			1											1
OTO14101			4					159				15		178
PAH23101								14						14
PAH23201								1				1		2
PAP06603	1		34				1	19				6	55	116
PAP06610	168		4315	5		3	3	718	2	1	57	502	3278	9052
PAU20101			514	46		1		2399			2	190	88	3240
PGH15901			1											1
PGU13101								14						14
PHT04901			42					38			1	11		92
PIR31101			1					44					4	49
PLN24201			3387	1216		3	1	3807	8		21	6277	258	14978
PPA33201			1					7						8
PTA20901		13	15	23				135			2	3		191
PTR32601		3	11					296			1	18	12	341
PUK04201	6		63				1	21	1			32	54	178
RAG33401												1		1
RAM15201			1								2			3
ROT08101		264	270			4		2686			12	218	424	3878
RPR30801			2					19				1	1	23

Gas Gate	AGCL	BOPE	CTCT	EDNZ	EGAS	EGLT	GEND	GENG	GEOL	GMTH	GNGC	GNVG	MEEN	Total
STR10201		21	96	93			1	671				25		907
TAC31001											1			1
TAT16401										1				1
TAU07001		103	245	2		2		1361			1	161	169	2044
TCC00201			1											1
THO22701			2					10				2		14
TIR33501			1											1
TIR33502		2	2			1		53				11	6	75
TKN17001			1					142			1	9		153
TKP05101												1		1
TKR19701		4	46					877			1	54	40	1022
TKS17401			1					17		1	2	1		22
TPK33301		28	4				1	533				25	24	615
TRC02003			1											1
TRG07701		591	135	3		2		3085			6	231	264	4317
TTK30601		2						4						6
TUK06501	1		6					1			2	1	1	12
TWA35610			8335	75		6	7	9883	14		31	7652	2428	28431
WAG21501			451	6018		2		2635	1	2	2	152		9263
WAK22801			182	21		1		1190				67	13	1474
WEL18301			2					19				3	1	25
WHG07501			83	2				941			5	101	85	1217
WHK32101		241	7			2		149			3	37	9	448

Gas Gate	AGCL	BOPE	CTCT	EDNZ	EGAS	EGLT	GEND	GENG	GEOL	GMTH	GNGC	GNVG	MEEN	Total
WKE19201											1			1
WRK18901			23					150			2	16	66	257
WST03610	1440		22094	10	1	10	8	6099	12	14	74	2711	20995	53468
WTA16501				1				38		1		3	1	44
WTG06910			537	11		2	1	4536	3		3	404	540	6037
WTK33901	7		272				1	1321				32	709	2342
WTK33902	21		127			1		191				24	183	547
WTR12001		66	116	286		1		623			2	28		1122
WTT20301											1			1
WVY23601			2				1	4						7
Total	2191	3432	61187	11523	3	74	55	110629	296	26	384	24734	42012	256546