

# Gas Registry statistics – May 2010

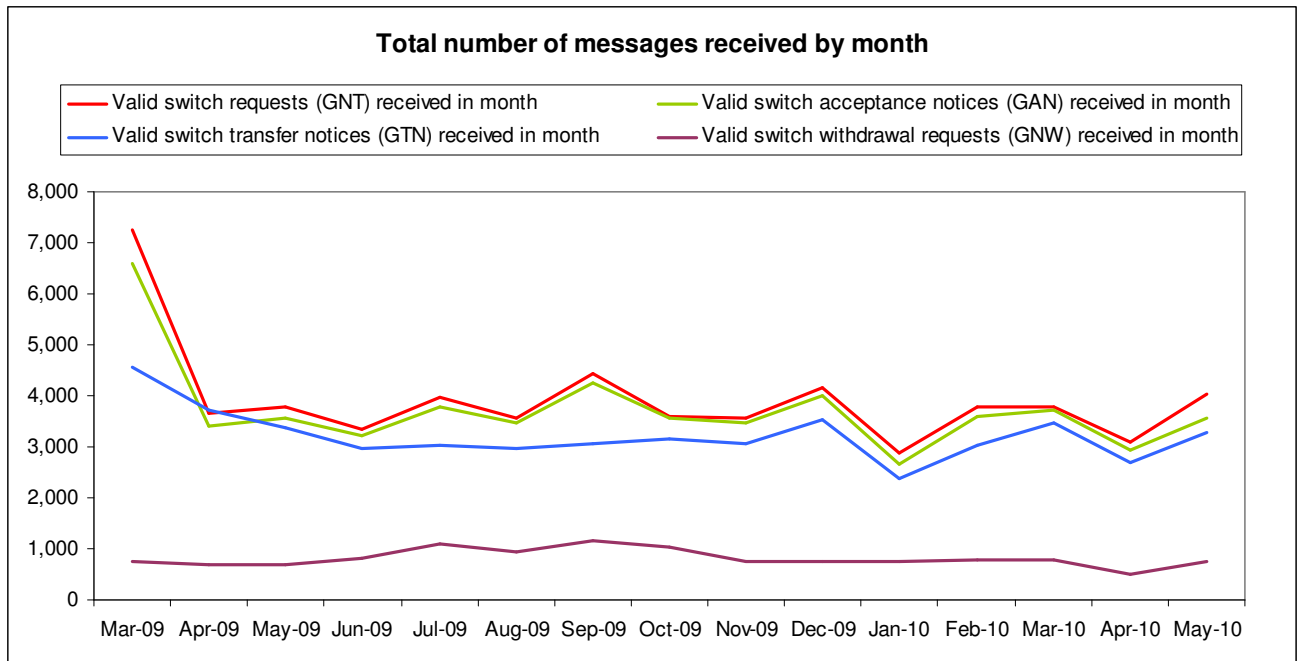
The following report provides statistics and charts illustrating gas registry usage, switching volumes and breakdowns of retailer, distributor and meter owner market shares. The information is provided in accordance with version 1.2 of the Determinations by the Industry Body (Gas Industry Co) under the Gas (Switching Arrangements) Rules 2008, dated 20 February 2009.

## Summary registry statistics

ICP enquiries processed in month (Online)	29,649
ICP enquiries processed in month (Offline)	3,970,180
<b>Total ICP enquiries processed in month</b>	<b>3,999,829</b>
ICPs added to the Registry in month	448
ICPs changed in month	6,194
ICPs decommissioned in month	22
Valid standard switch requests (GNT-S) received in month	2,212
Valid move switch requests (GNT-SM) received in month	1,825
<b>Valid switch requests (GNT) received in month</b>	<b>4,037</b>
Valid switch acceptance notices (GAN) received in month	3,575
<b>Valid switch transfer notices (GTN) received in month</b>	<b>3,278</b>
Valid switch withdrawal requests (GNW) received in month	760
Valid switch withdrawal acceptances (GAW-A) received in month	738
Valid switch withdrawal rejections (GAW-R) received in month	21
Valid switch reading renegotiation requests (GNC) received in month	46
Valid switch reading renegotiation acceptances (GAC-A) received in month	44
Valid switch reading renegotiation rejections (GAC-R) received in month	3

Note: A switch transfer notice (GTN) is the last stage required to complete the switching process. This statistic indicates the number of switches completed in the month.

## Switching activity



## ICPs by status – May 2010

The meaning of the ICP status codes are as follows:

ACTC—Active contracted (gas is able to flow and the customer has a contract with a retailer)

ACTV—Active vacant (gas is able to flow and the premises is vacant)

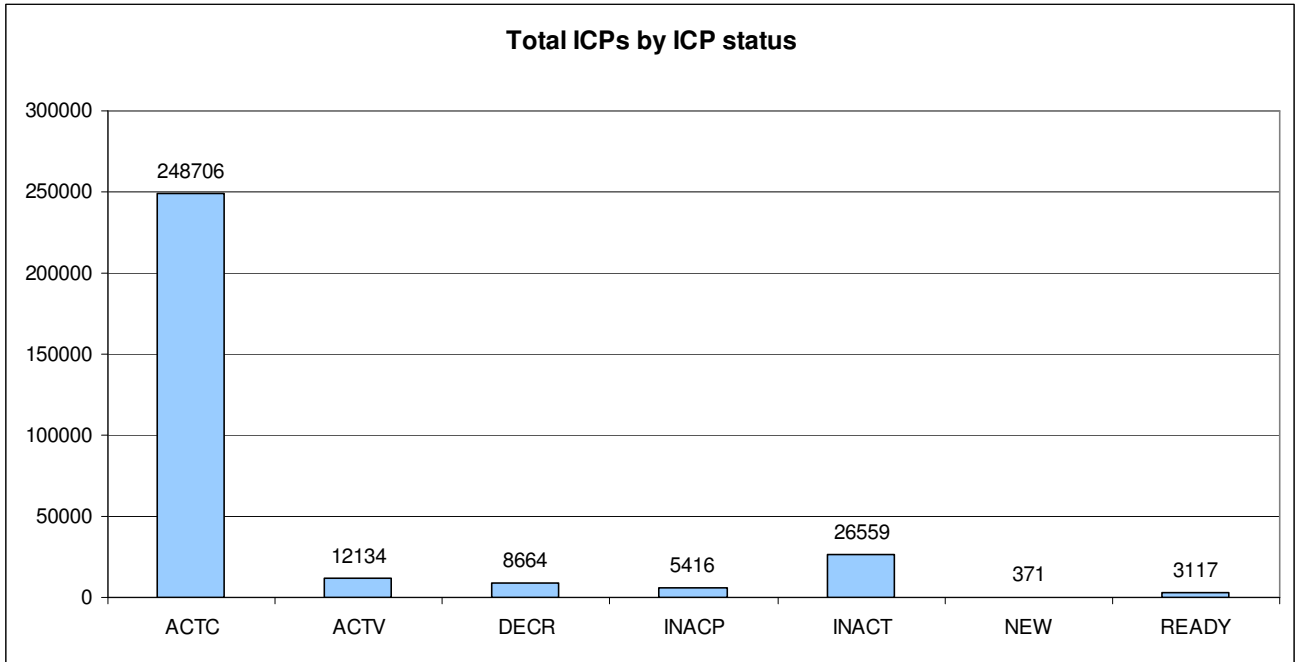
DECR—Decommissioned

INACP—Inactive permanent (gas unable to flow due to a permanent disconnection)

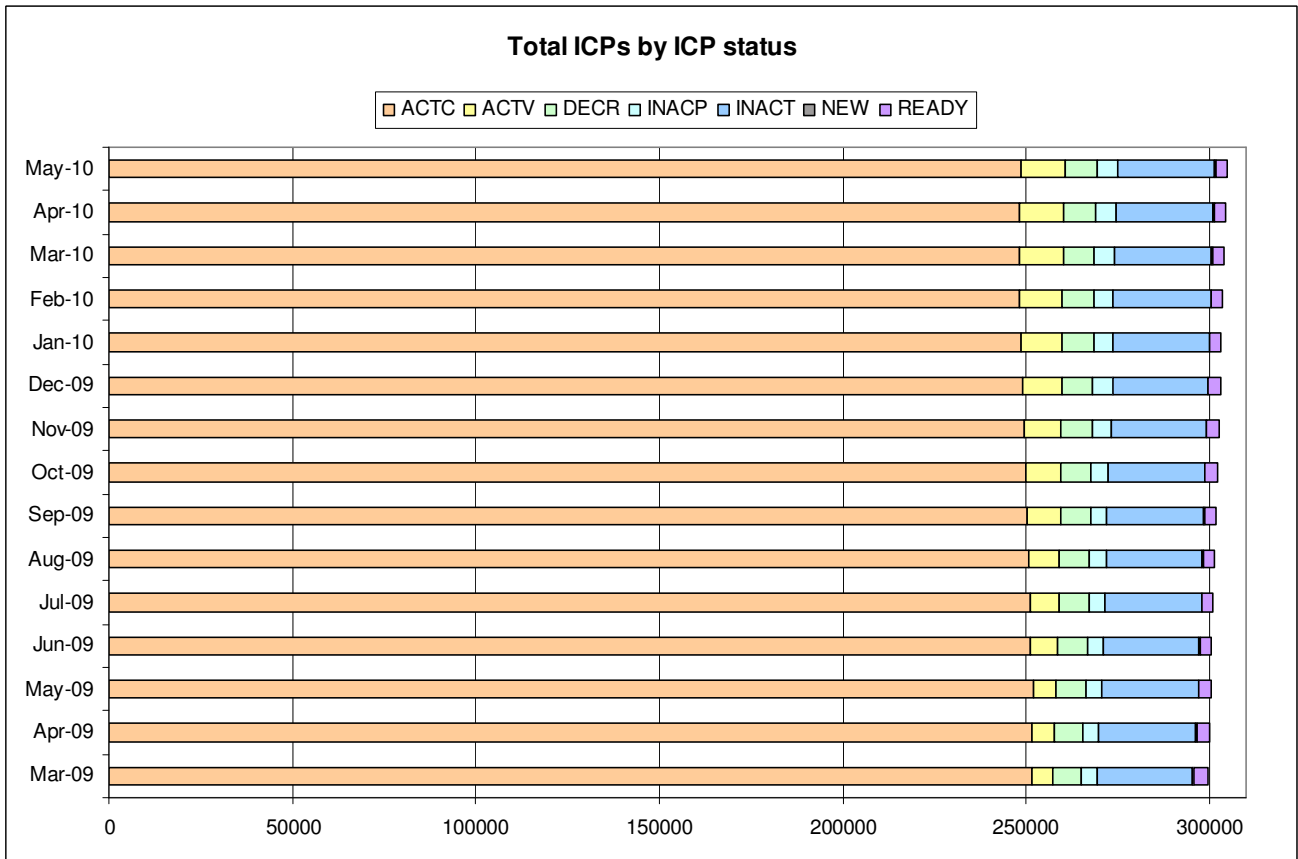
INACT—Gas unable to flow due to a temporary disconnection

NEW—Newly created ICP, gas not yet able to flow

READY—New ICP, gas able to flow, awaiting uplift by retailer

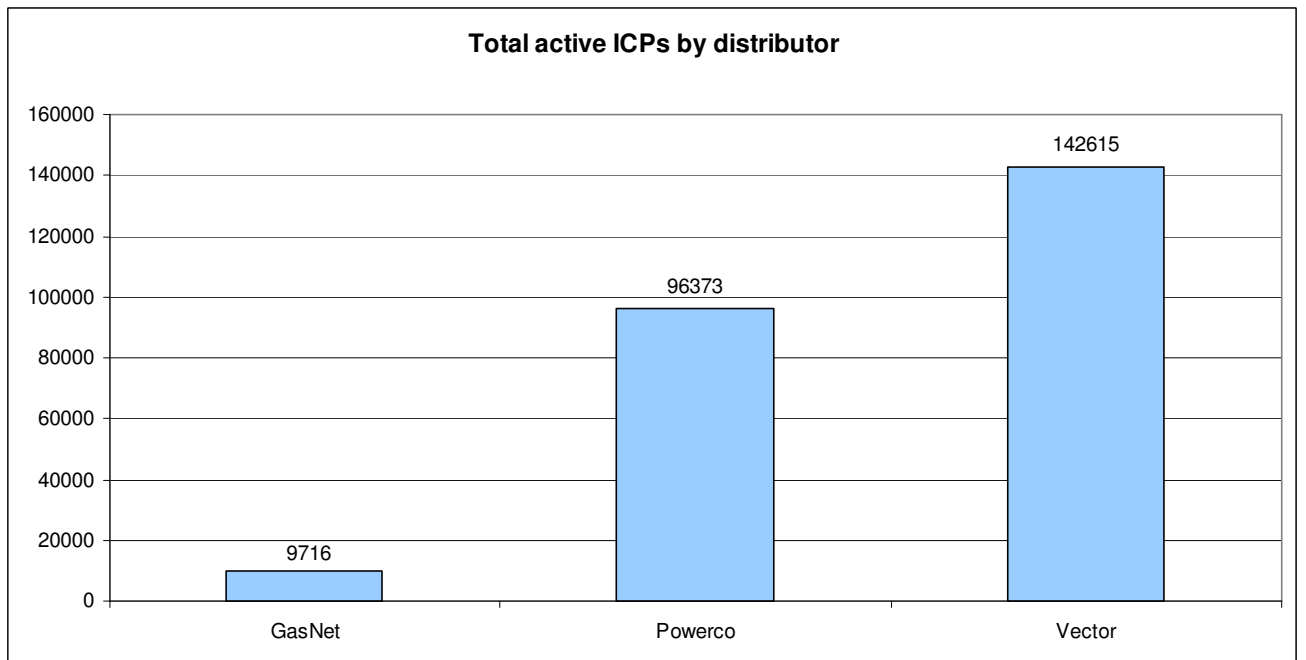
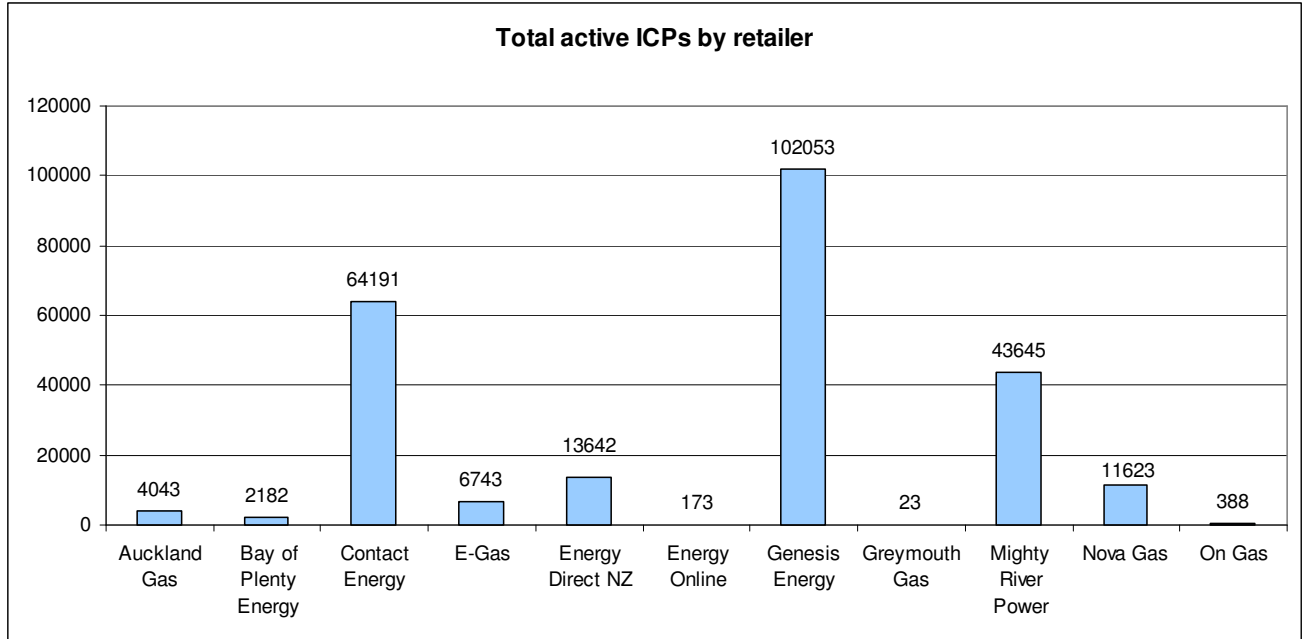


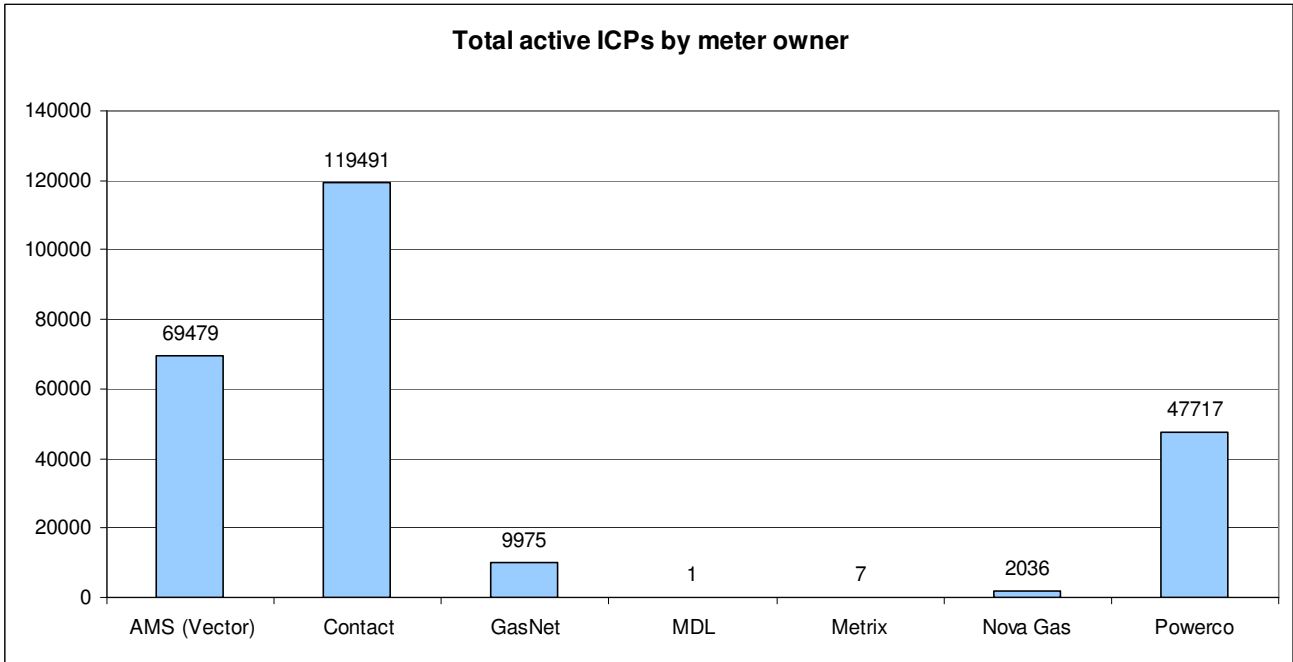
### ICPs by status – historical



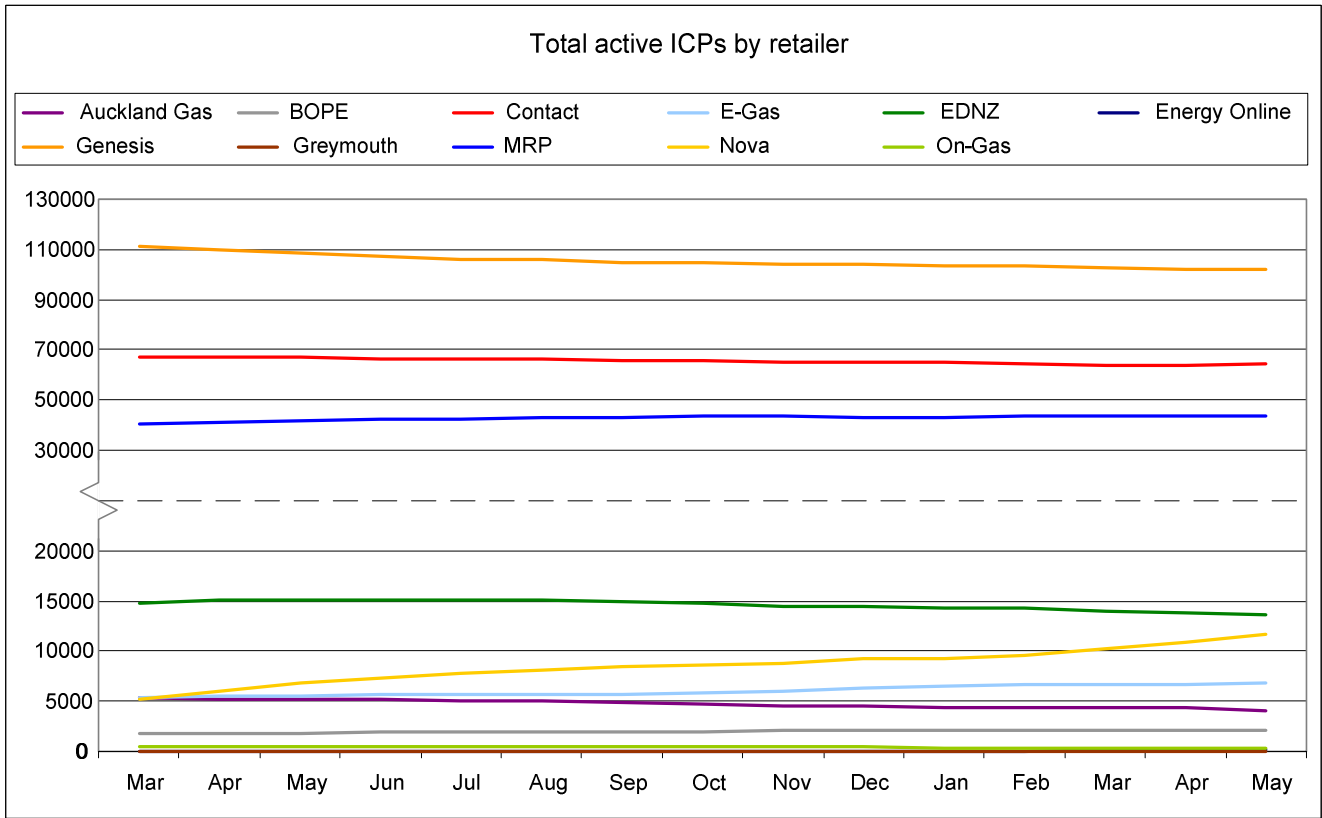
## Market shares – May 2010

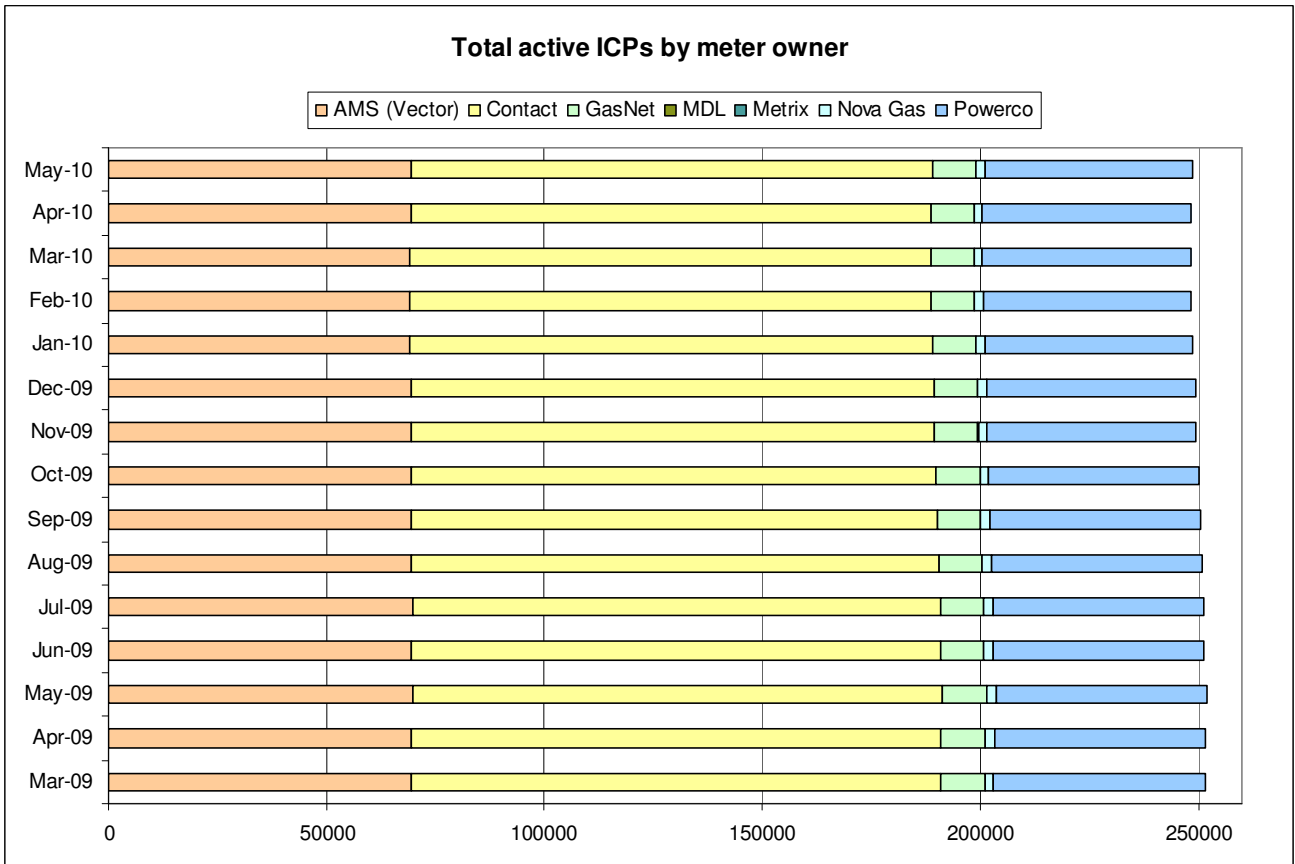
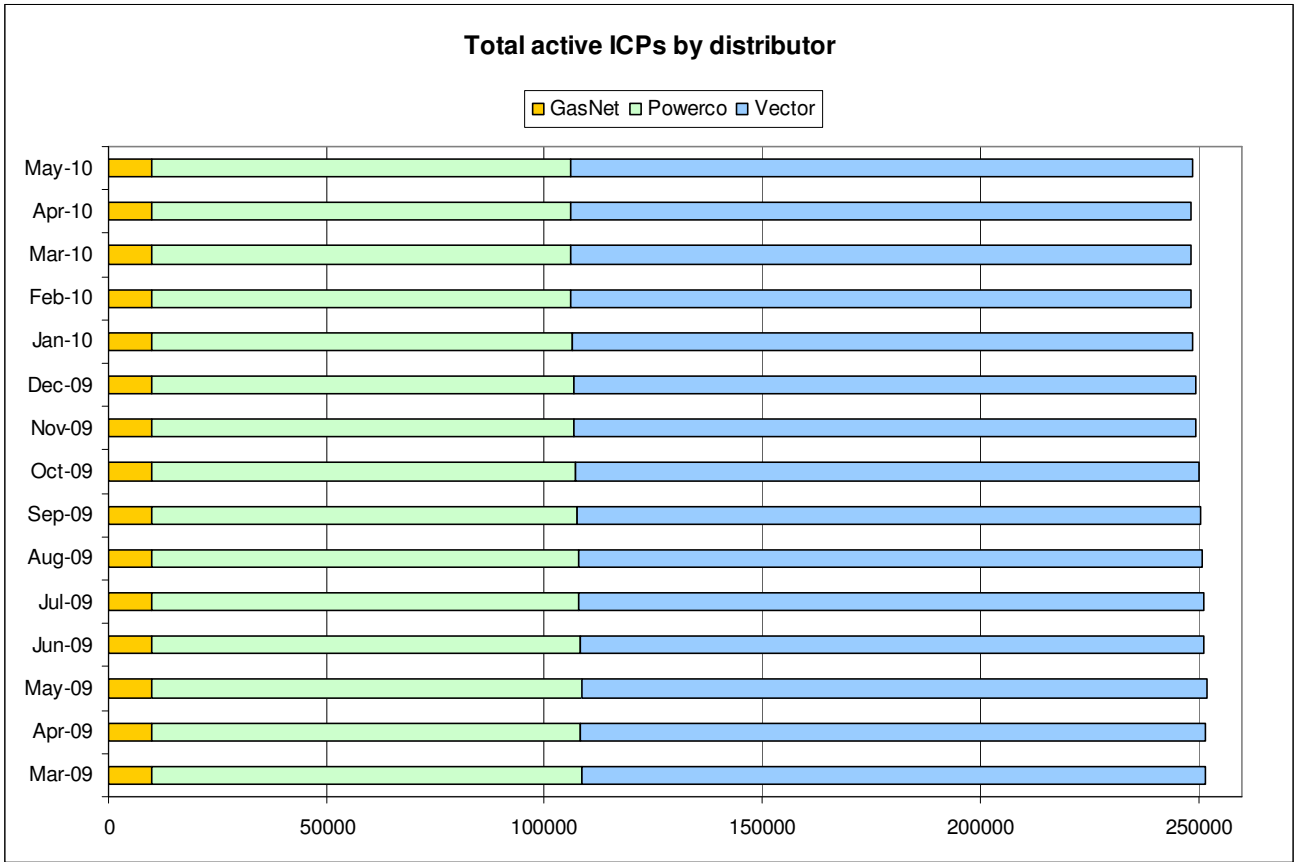
The following charts show the distribution of active-contracted ICPs by retailer, distribution company and meter owner respectively.





### Market shares – historical





## **Active ICPs by gas gate and responsible retailer – May 2010**

The following table shows the distribution of active ICPs by gas gate, and the distribution by retailer at each gas gate.

The responsible retailer codes are as follows:

AGCL—Auckland Gas Company

BOPE—Bay of Plenty Energy

CTCT—Contact Energy

EGAS—E-Gas 2000

EGLT—E-Gas Ltd

EDNZ—Energy Direct NZ (Wanganui Gas)

GENG—Genesis Energy

GEND—Genesis Energy

GEOL—Energy Online

GMTH—Greymouth Gas

MEEN—Mighty River Power

GNVG—Nova Gas

GNGC—OnGas (Vector)

Gas Gate	AGCL	BOPE	CTCT	EDNZ	EGAS	EGLT	GEND	GENG	GEOL	GMTH	GNGC	GNVG	MEEN	Grand Total
ALF15501											1			1
ASH34301			85	56		9		38					14	202
BAL08201			1											1
BAL09626			1											1
BEL24510			1758	17	229	433		16659	2		9	1193	1514	21814
BMC17901	143		414	2	12	48	1	257			4	35	741	1657
BRO36301											1			1
CAM17201	1		60			40		1366				1	175	1643
DAN05001			82		7	12		8			1	2		112
DRU15101	1		14		1	3		3			3	3	3	31
DRU15102	1					1		7			4	1	2	16
EGC30701			1											1
EGC30702		2	1			1		3						7
ELM12301			48	39		4		232			3	1		327
FLD03001			670	408	8	50		458			1	8	82	1685
FLH21901			2	3				1						6
FOX22101			229	12	7	7	1	16	4		1	13	19	309
GIS07810			838	231	1	145	3	2091			5	5		3319
GLB03401											1			1
HAR11801								1			4			5
HEN74101	865		7056	8	96	231	1	4298		1	19	117	7511	20203
HPS02993							1							1

<b>Gas Gate</b>	<b>AGCL</b>	<b>BOPE</b>	<b>CTCT</b>	<b>EDNZ</b>	<b>EGAS</b>	<b>EGLT</b>	<b>GEND</b>	<b>GENG</b>	<b>GEOL</b>	<b>GMTH</b>	<b>GNGC</b>	<b>GNVG</b>	<b>MEEN</b>	<b>Grand Total</b>
HRU16101						1	1	1				1		<b>4</b>
HST05210			3221	311	76	281	1	284	104		6	49		<b>4333</b>
HTK08301			1					14					4	<b>19</b>
HTL16601			3			8	1	94			3		2	<b>111</b>
HTV11301	4	3	1183		2	447	1	21169			52	114	2456	<b>25431</b>
HUN15301	1		1								2			<b>4</b>
HWA20801		26	438	332		66		1858			1	10		<b>2731</b>
IGW11901		11	72	117		8		333				3		<b>544</b>
KAP12901			2					2						<b>4</b>
KAW04405		133	9	1		6		117					1	<b>267</b>
KAW04410											1			<b>1</b>
KAW04411											1			<b>1</b>
KIG16801			4			1							1	<b>6</b>
KIH19101	1		39			38	1	1174			1	1	51	<b>1306</b>
KIN02601								3			2		1	<b>6</b>
KIN04310											1			<b>1</b>
KIW34201										1				<b>1</b>
KIW34202								1			1			<b>2</b>
KKI23701			1									1		<b>2</b>
KPA12401		1	4	6				53						<b>64</b>
KRG24101			1	2		1								<b>4</b>
KTK23901											1			<b>1</b>

<b>Gas Gate</b>	<b>AGCL</b>	<b>BOPE</b>	<b>CTCT</b>	<b>EDNZ</b>	<b>EGAS</b>	<b>EGLT</b>	<b>GEND</b>	<b>GENG</b>	<b>GEOL</b>	<b>GMTH</b>	<b>GNGC</b>	<b>GNVG</b>	<b>MEEN</b>	<b>Grand Total</b>
KUK22401			5			4		18						<b>27</b>
KUR33601											1			<b>1</b>
LAB20201			11	69		4		32				1	1	<b>118</b>
LCF20010			1											<b>1</b>
LNB24301			85	59		2		103			4	7	16	<b>276</b>
LVN24401			2177	123	44	82		254	53		5	54	119	<b>2911</b>
MGK05401										1				<b>1</b>
MMU08001	1	399	92		3	128	2	2951		2	3	14	337	<b>3932</b>
MNA23402			41	35	1	3		164						<b>244</b>
MRV16301			1											<b>1</b>
MRV16302			28			22		530				3	78	<b>661</b>
MSD01801			1											<b>1</b>
MSD01802											1			<b>1</b>
MTG17301						1		37					1	<b>39</b>
MTN23801			61	264		8		131			1	3		<b>468</b>
MTP20601								5						<b>5</b>
MUT19001											1			<b>1</b>
NGW14501			5			2		129					6	<b>142</b>
NPL12101		317	1207	2252	28	203	1	6457			9	41		<b>10515</b>
NPS00530			1											<b>1</b>
OAK18601								1						<b>1</b>
OKA13201			13	7		1		40						<b>61</b>

<b>Gas Gate</b>	<b>AGCL</b>	<b>BOPE</b>	<b>CTCT</b>	<b>EDNZ</b>	<b>EGAS</b>	<b>EGLT</b>	<b>GEND</b>	<b>GENG</b>	<b>GEOL</b>	<b>GMTH</b>	<b>GNGC</b>	<b>GNVG</b>	<b>MEEN</b>	<b>Grand Total</b>
OKS32801						1							1	2
OKU16701		7	33	51				116				1		208
OPK13001		1	29	13				123						166
OPO32001		46	3			4	1	54					1	109
ORD24701			1	1		1								3
OTA22601			47	3		21		296				2	6	375
OTB00301			1											1
OTO14101			3			14		157						174
PAH23201					1	1		6						8
PAP06603	4		19		1		1	9					46	80
PAP06610	353		4391	10	64	169	1	497		1	51	94	3392	9023
PAU20101			478	51	9	184		2300			2	2	92	3118
PGH15901			1											1
PGU13101								15						15
PHT04901			48			10		29			1			88
PIR31101								39					5	44
PLN24201			5257	2247	43	283		3835	4		21	2263	587	14540
PPA33201			1					7					1	9
PTA20901		3	20	26		2		136			1	1		189
PTR32601		2	10			21		286			1		12	332
PUK04201	9		67	1	5	10		14				8	56	170
RAG33401												1		1

Gas Gate	AGCL	BOPE	CTCT	EDNZ	EGAS	EGLT	GEND	GENG	GEOL	GMTH	GNGC	GNVG	MEEN	Grand Total
RAM15201			1								2			3
ROT08101		250	259	1	2	184	1	2583			11	37	455	3783
RPR30801			2			1		19					1	23
STR10201		8	98	105		24		652				3		890
TAC31001											1			1
TAT16401										1				1
TAU07001		107	196	2	1	154		1331			1	2	166	1960
TCC00201			1											1
THO22701			2			2		10						14
TIR33501			1											1
TIR33502		1				12		58					6	77
TKN17001						8		156			1	1		166
TKP05101												1		1
TKR19701		4	32		1	50		879			1	1	41	1009
TKS17401			1			1	1	14		1	2			20
TPK33301		27	6			23	1	527					21	605
TRC02003			1											1
TRG07701		573	112	3		201	1	2911			5	13	259	4078
TTK30601		2						4						6
TUK06501	1		6					1			2	1	1	12
TWA35610			9011	59	236	578	1	8247	4		30	6730	2286	27182
WAG21501			462	6356		65		2168		1		71		9123

Gas Gate	AGCL	BOPE	CTCT	EDNZ	EGAS	EGLT	GEND	GENG	GEOL	GMTH	GNGC	GNVG	MEEN	Grand Total
WAK22801			178	13		74		1167					11	<b>1443</b>
WEL18301			1			2		17					2	<b>22</b>
WHG07501			70	2	1	100		880			5	2	92	<b>1152</b>
WHK32101		242	8			40		162			3		8	<b>463</b>
WKE19201											1			<b>1</b>
WRK18901			18			11		149			2		65	<b>245</b>
WST03610	2618		22332	20	385	688	3	4361		13	77	508	21442	<b>52447</b>
WTA16501			1			1		35		1		3	1	<b>42</b>
WTG06910			530	10	79	122	1	4335	2		4	178	530	<b>5791</b>
WTK33901	12		243			12	1	1226				8	724	<b>2226</b>
WTK33902	28		112		3	8		164				4	200	<b>519</b>
WTR12001		17	128	314		14		652			8	7		<b>1140</b>
WTT20301											1			<b>1</b>
WVY23601			2				1	4						<b>7</b>
<b>Grand Total</b>	<b>4043</b>	<b>2182</b>	<b>64191</b>	<b>13642</b>	<b>1346</b>	<b>5397</b>	<b>29</b>	<b>102024</b>	<b>173</b>	<b>23</b>	<b>388</b>	<b>11623</b>	<b>43645</b>	<b>248706</b>