

Gas Registry statistics – June 2010

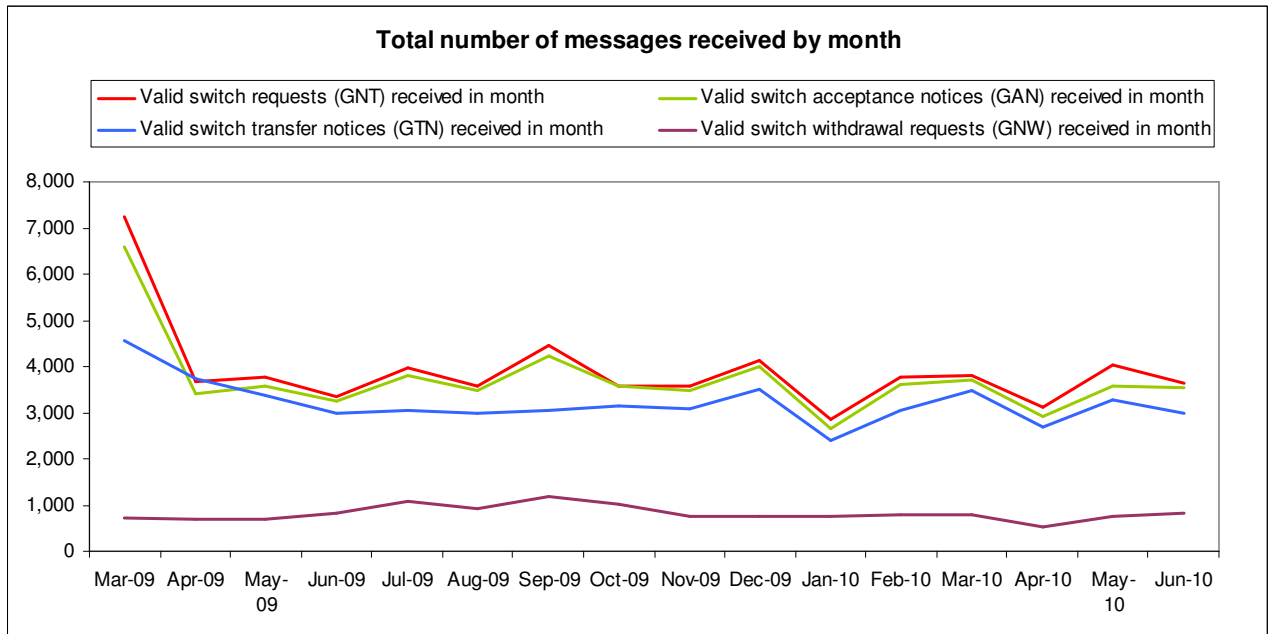
The following report provides statistics and charts illustrating gas registry usage, switching volumes and breakdowns of retailer, distributor and meter owner market shares. The information is provided in accordance with version 1.2 of the Determinations by the Industry Body (Gas Industry Co) under the Gas (Switching Arrangements) Rules 2008, dated 20 February 2009.

Summary registry statistics

ICP enquiries processed in month (Online)	29,676
ICP enquiries processed in month (Offline)	3,890,445
Total ICP enquiries processed in month	3,920,121
ICPs added to the Registry in month	413
ICPs changed in month	34,348
ICPs decommissioned in month	17
Valid standard switch requests (GNT-S) received in month	2,087
Valid move switch requests (GNT-SM) received in month	1,550
Valid switch requests (GNT) received in month	3,637
Valid switch acceptance notices (GAN) received in month	3,543
Valid switch transfer notices (GTN) received in month	2,970
Valid switch withdrawal requests (GNW) received in month	811
Valid switch withdrawal acceptances (GAW-A) received in month	794
Valid switch withdrawal rejections (GAW-R) received in month	20
Valid switch reading renegotiation requests (GNC) received in month	33
Valid switch reading renegotiation acceptances (GAC-A) received in month	25
Valid switch reading renegotiation rejections (GAC-R) received in month	0

Note: A switch transfer notice (GTN) is the last stage required to complete the switching process. This statistic indicates the number of switches completed in the month.

Switching activity



ICPs by status – June 2010

The meaning of the ICP status codes are as follows:

ACTC—Active contracted (gas is able to flow and the customer has a contract with a retailer)

ACTV—Active vacant (gas is able to flow and the premises is vacant)

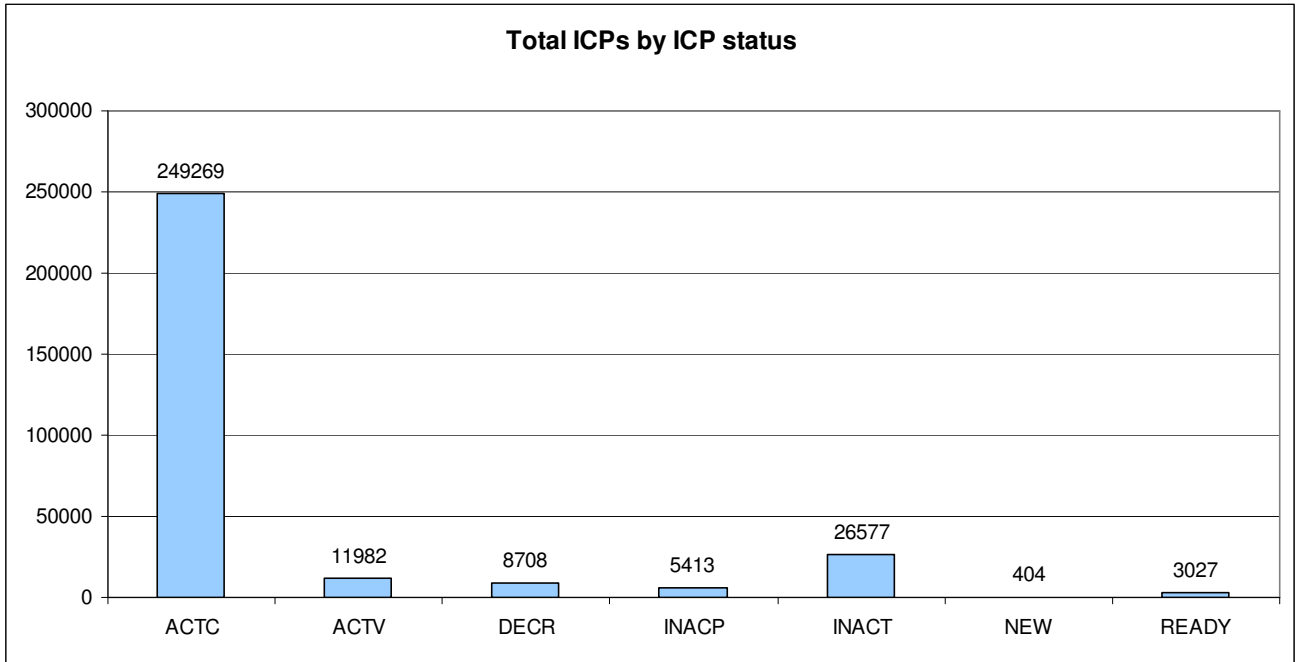
DECR—Decommissioned

INACP—Inactive permanent (gas unable to flow due to a permanent disconnection)

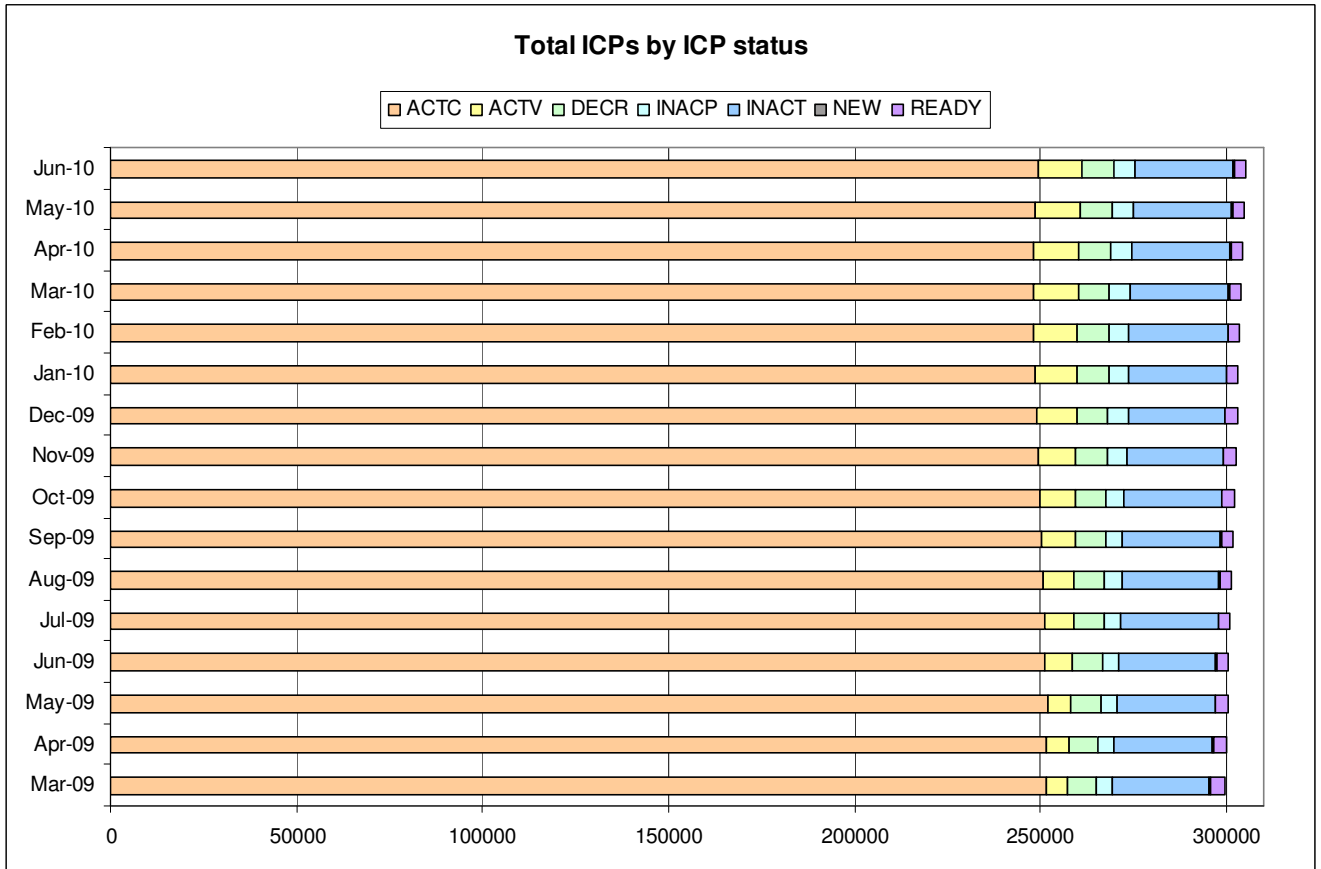
INACT—Gas unable to flow due to a temporary disconnection

NEW—Newly created ICP, gas not yet able to flow

READY—New ICP, gas able to flow, awaiting uplift by retailer

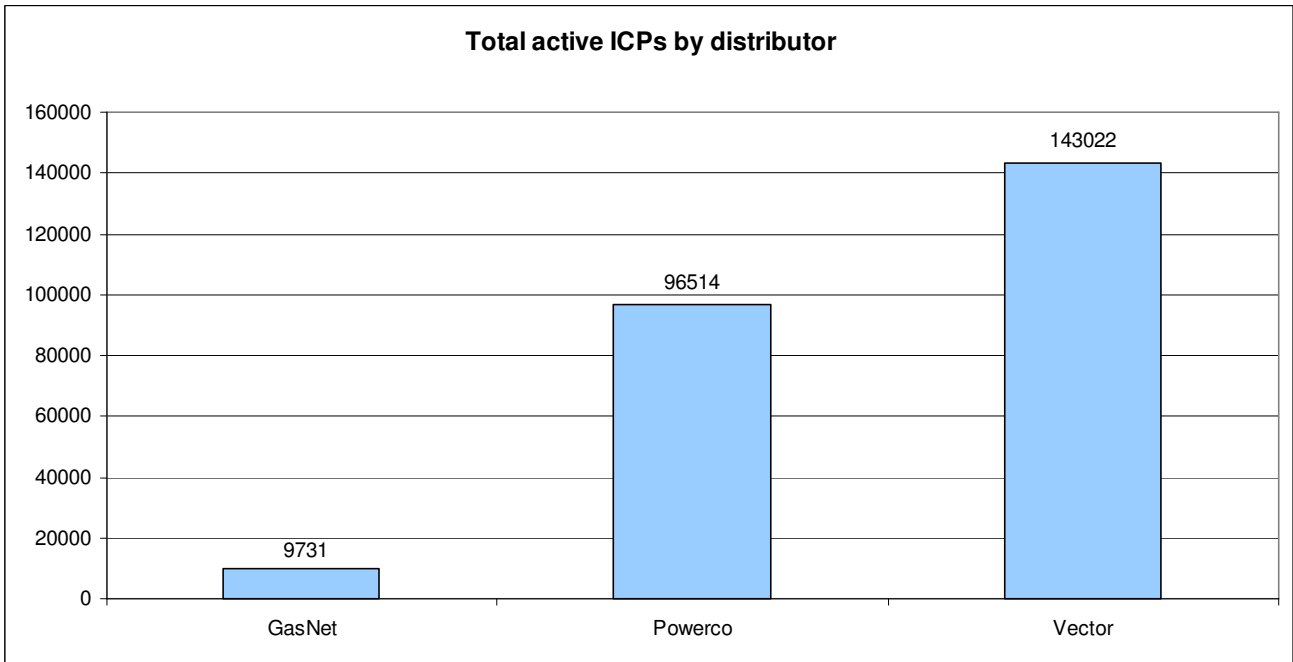
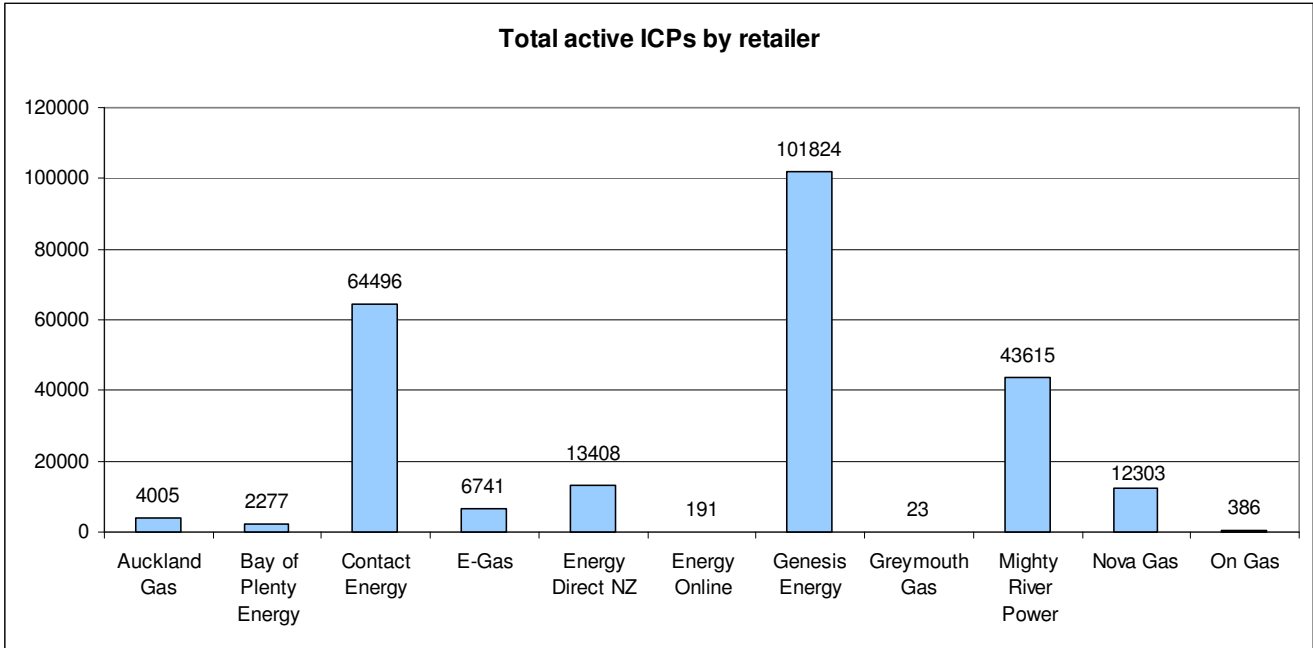


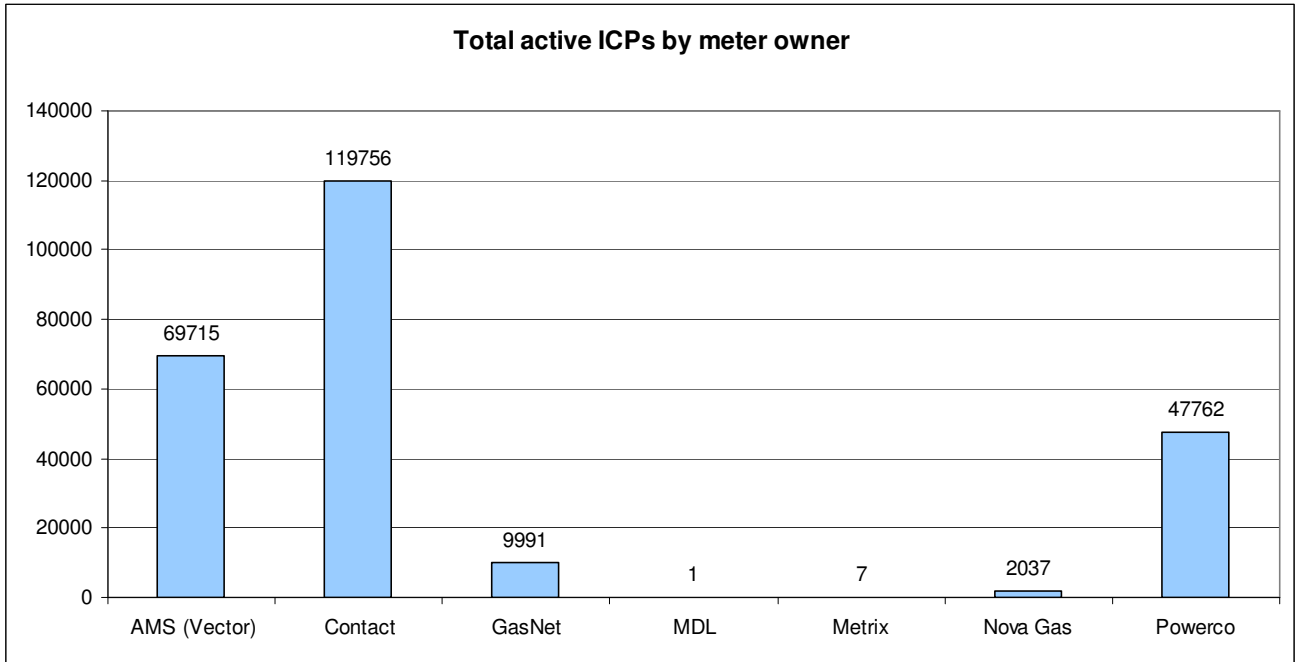
ICPs by status – historical



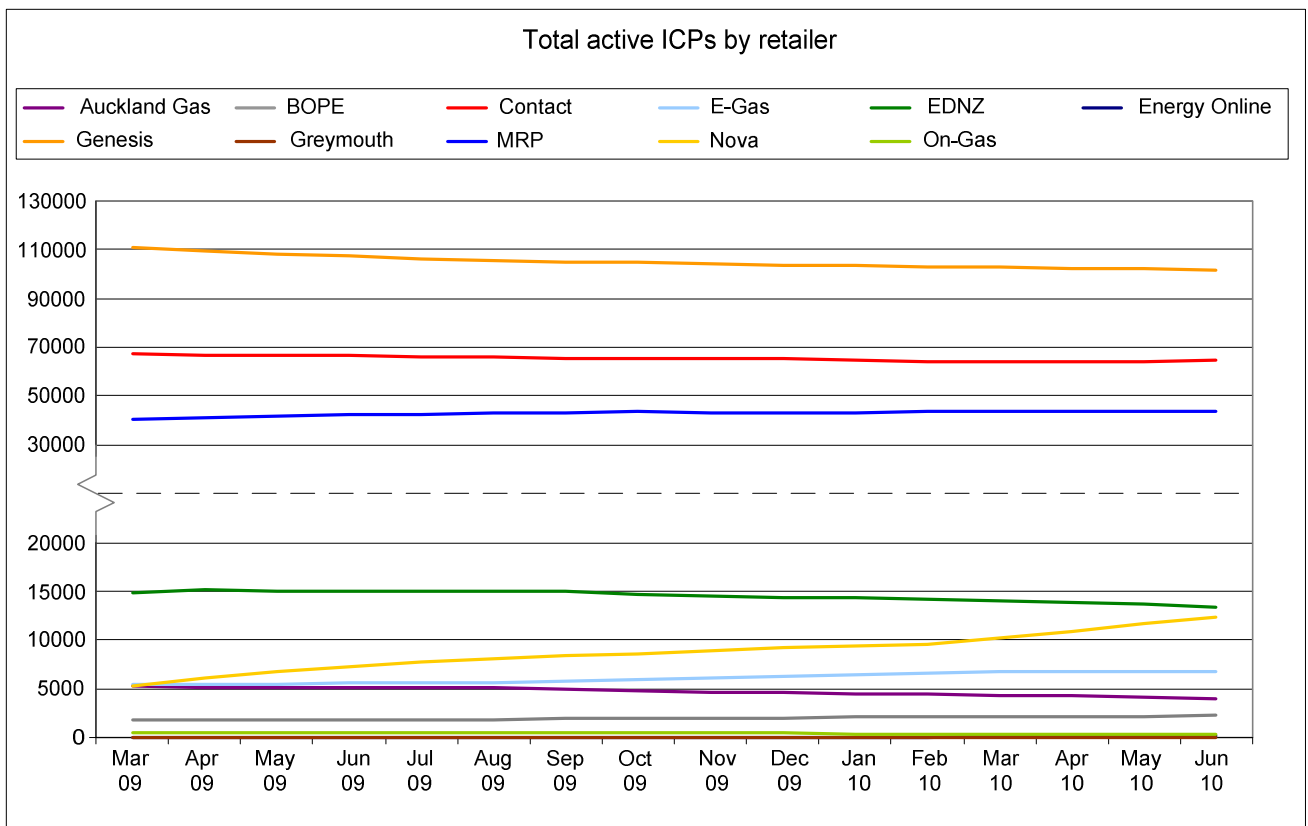
Market shares – June 2010

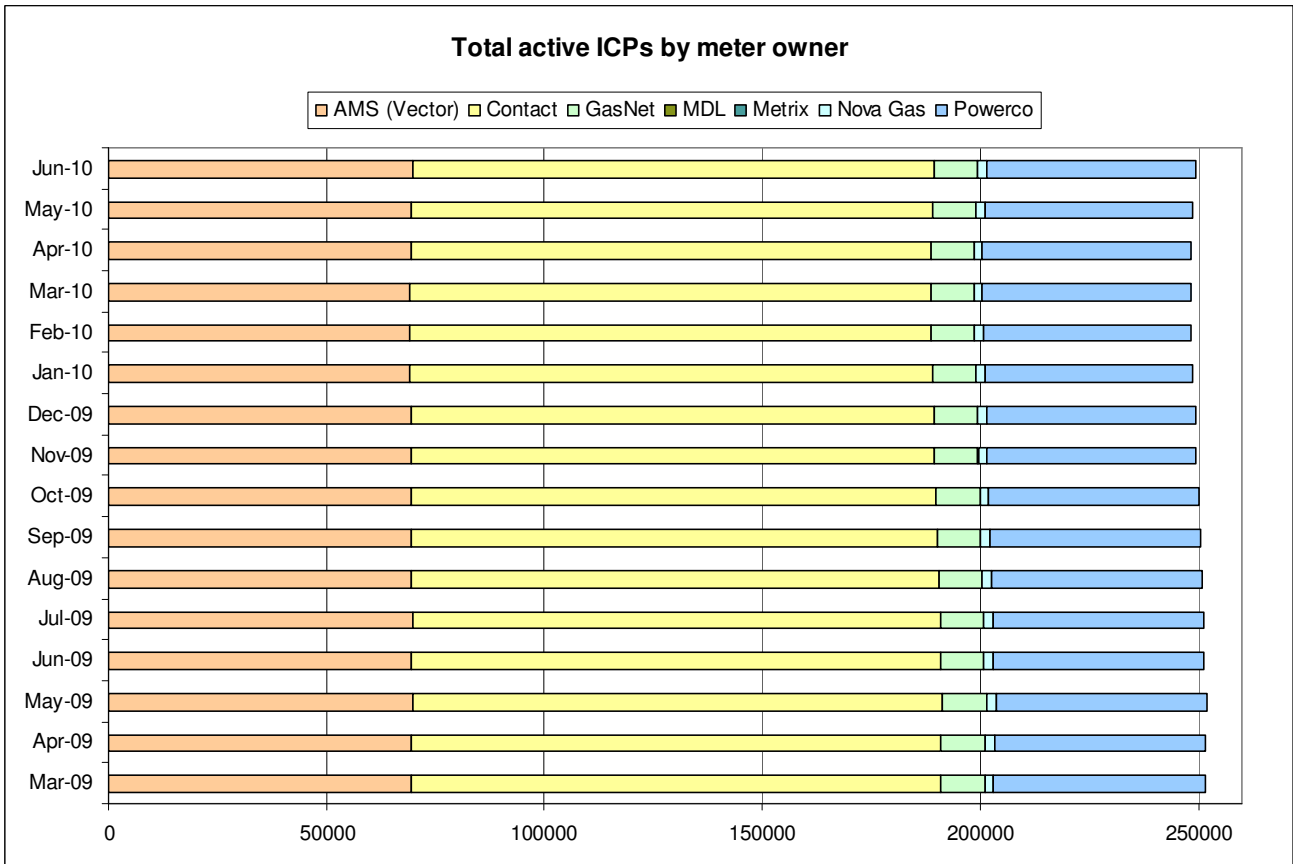
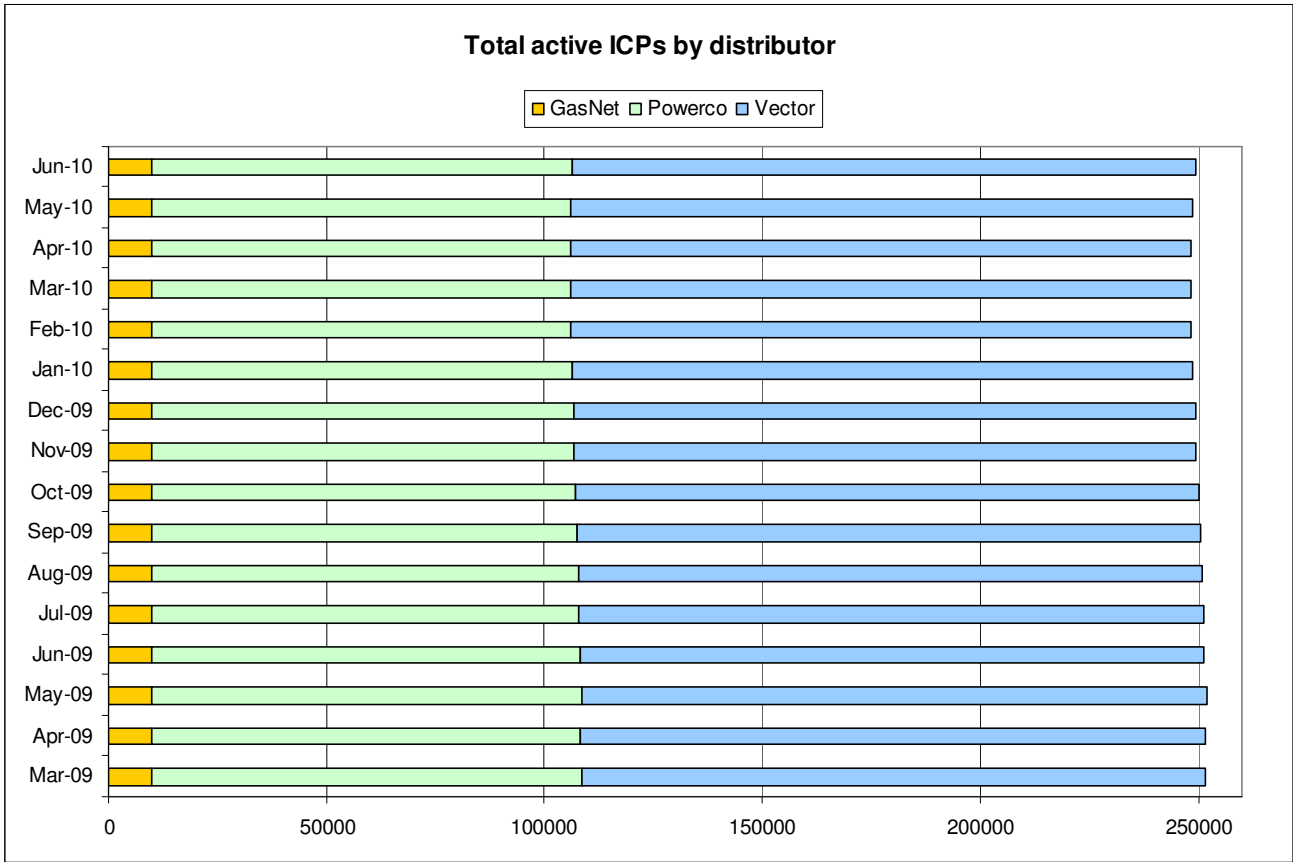
The following charts show the distribution of active-contracted ICPs by retailer, distribution company and meter owner respectively.





Market shares – historical





Active ICPs by gas gate and responsible retailer – June 2010

The following table shows the distribution of active ICPs by gas gate, and the distribution by retailer at each gas gate.

The responsible retailer codes are as follows:

AGCL—Auckland Gas Company

BOPE—Bay of Plenty Energy

CTCT—Contact Energy

EGAS—E-Gas 2000

EGLT—E-Gas Ltd

EDNZ—Energy Direct NZ (Wanganui Gas)

GENG—Genesis Energy

GEND—Genesis Energy

GEOL—Energy Online

GMTH—Greymouth Gas

MEEN—Mighty River Power

GNVG—Nova Gas

GNGC—OnGas (Vector)

Gas Gate	AGCL	BOPE	CTCT	EDNZ	EGAS	EGLT	GEND	GENG	GEOL	GMTH	GNGC	GNVG	MEEN	Total
ALF15501											1			1
ASH34301			86	56		9		38					14	203
BAL08201			1											1
BAL09626			1											1
BEL24510			1795	19	232	440		16622	3		10	1182	1509	21812
BMC17901	139		424	2	12	47	1	260			4	36	739	1664
BRO36301											1			1
CAM17201	1		64			42		1375				1	174	1657
DAN05001			80		7	14		7			1	3		112
DRU15101	1		14		1	3		3			3	3	3	31
DRU15102	1					1		7			4	2	3	18
EGC30701			1											1
EGC30702		2	1			1		3						7
ELM12301			50	39		4		228			3	1		325
FLD03001			671	415	9	51		459			1	8	79	1693
FLH21901			2	3				1						6
FOX22101			230	12	7	7	1	17	4		1	13	19	311
GIS07810			858	229	1	149	3	2083			4	5		3332
GLB03401											1			1
HAR11801								1			4			5
HEN74101	856		7129	8	96	232	1	4315		1	19	123	7512	20292
HPS02993							1							1
HRU16101						1	1	1				1		4

Gas Gate	AGCL	BOPE	CTCT	EDNZ	EGAS	EGLT	GEND	GENG	GEOL	GMTH	GNGC	GNVG	MEEN	Total
HST05210			3221	311	84	285	1	282	116		6	49		4355
HTK08301			1					14					4	19
HTL16601			3			8	1	93			3		3	111
HTV11301	4	4	1254		2	387	1	21191			52	114	2441	25450
HUN15301	1		1								2			4
HWA20801		32	447	331		65		1837			1	10		2723
IGW11901		11	73	116		9		329				3		541
KAP12901			2					2						4
KAW04405		132	9	1		6		117					1	266
KAW04410											1			1
KAW04411											1			1
KIG16801			4			1							1	6
KIH19101	1		44			38	1	1170			1	1	50	1306
KIN02601								3			2		1	6
KIN04310											1			1
KIW34201										1				1
KIW34202								1			1			2
KKI23701			1									1		2
KPA12401		1	5	6				52						64
KRG24101			1	2		1								4
KTK23901											1			1
KUK22401			6			4		18						28
KUR33601											1			1

Gas Gate	AGCL	BOPE	CTCT	EDNZ	EGAS	EGLT	GEND	GENG	GEOL	GMTH	GNGC	GNVG	MEEN	Total
LAB20201			11	69		4		32				1	1	118
LCF20010			1											1
LNB24301			86	62		2		107			4	8	15	284
LVN24401			2192	123	52	82		258	58		5	54	113	2937
MGK05401										1				1
MMU08001	1	398	97		3	128	2	2947		2	3	14	341	3936
MNA23402			40	34	1	3		165						243
MRV16301			1											1
MRV16302			29			23		529				2	76	659
MSD01801			1											1
MSD01802											1			1
MTG17301						1		37					1	39
MTN23801			62	263		8		132			1	3		469
MTP20601								5						5
MUT19001											1			1
NGW14501			9			2		127					7	145
NPL12101		394	1212	2228	28	201	1	6406			9	40		10519
NPS00530			1											1
OAK18601								1						1
OKA13201			13	7		1		39						60
OKS32801						1							1	2
OKU16701		8	32	49				115				1		205
OPK13001		1	30	13				124						168

Gas Gate	AGCL	BOPE	CTCT	EDNZ	EGAS	EGLT	GEND	GENG	GEOL	GMTH	GNGC	GNVG	MEEN	Total
OPO32001		49	3			4	1	54						111
ORD24701			1	1		1								3
OTA22601			49	3		21		296				2	5	376
OTB00301			1											1
OTO14101			3			14		158						175
PAH23101								5						5
PAH23201						1		1						2
PAP06603	4		22		1		1	13				2	48	91
PAP06610	351		4395	10	60	167	1	499		1	51	104	3385	9024
PAU20101			485	50	10	186		2294			2	2	94	3123
PGH15901			1											1
PGU13101								15						15
PHT04901			48			11		28			1			88
PIR31101								39					5	44
PLN24201			5041	2031	42	282		3708	4		21	2938	501	14568
PPA33201			1					7					1	9
PTA20901		3	20	26		2		136			1	1		189
PTR32601		3	11			21		284			1		13	333
PUK04201	8		69	1	5	10		14				9	56	172
RAG33401												1		1
RAM15201			1								2			3
ROT08101		252	265	1	1	185	1	2583			11	37	451	3787
RPR30801			2			1		19					1	23

Gas Gate	AGCL	BOPE	CTCT	EDNZ	EGAS	EGLT	GEND	GENG	GEOL	GMTH	GNGC	GNVG	MEEN	Total
STR10201		9	97	105		24		651				3		889
TAC31001											1			1
TAT16401										1				1
TAU07001		103	214	2	1	156		1313			1	2	175	1967
TCC00201			1											1
THO22701			2			2		10						14
TIR33501			1											1
TIR33502		1				12		58					6	77
TKN17001						8		155			1	1		165
TKP05101												1		1
TKR19701		5	38		1	51		871			1	2	44	1013
TKS17401			1			1	1	14		1	2			20
TPK33301		27	6			23	1	525					21	603
TRC02003			1											1
TRG07701		577	117	3		201	1	2911			5	13	261	4089
TTK30601		2						4						6
TUK06501	1		6					1			2	1	1	12
TWA35610			9028	63	242	583	1	8256	4		30	6699	2323	27229
WAG21501			480	6351		63		2169		1		73		9137
WAK22801			179	13		76		1165					10	1443
WEL18301			1			2		17					2	22
WHG07501			73	2	1	99		884			5	2	92	1158
WHK32101		242	8			40		160			3		8	461

Gas Gate	AGCL	BOPE	CTCT	EDNZ	EGAS	EGLT	GEND	GENG	GEOL	GMTH	GNGC	GNVG	MEEN	Total
WKE19201											1			1
WRK18901			18			10		147			2	2	68	247
WST03610	2596		22487	20	387	693	3	4370		13	76	526	21476	52647
WTA16501						1		36		1		3	1	42
WTG06910			545	11	84	123	1	4329	2		4	181	525	5805
WTK33901	12		237			12	1	1224				8	738	2232
WTK33902	28		113		3	7		167				4	196	518
WTR12001		21	127	317		14		648			7	7		1141
WTT20301											1			1
WVY23601			2				1	4						7
Total	4005	2277	64496	13408	1373	5368	29	101795	191	23	386	12303	43615	249269