

Gas Registry statistics – January 2011

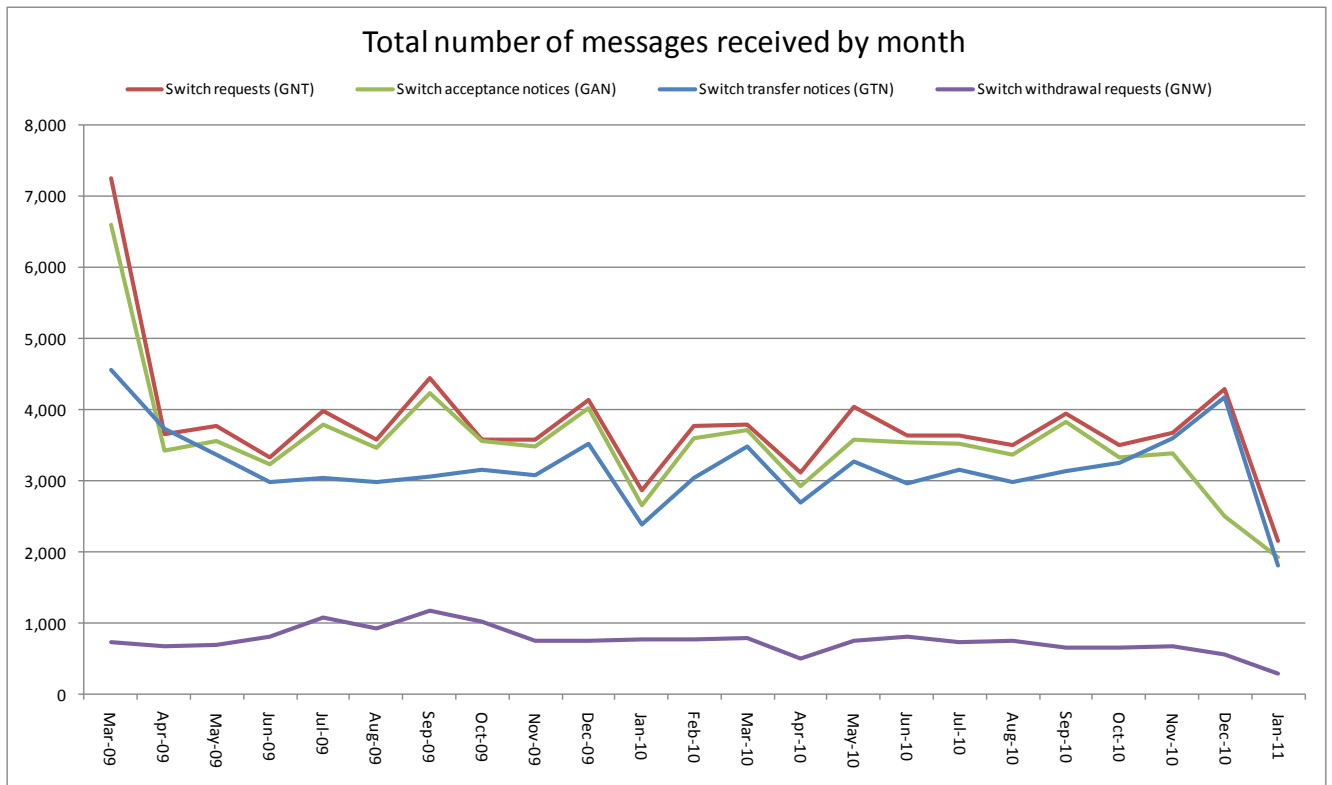
The following report provides statistics and charts illustrating gas registry usage, switching volumes and breakdowns of retailer, distributor and meter owner market shares. The information is provided in accordance with version 1.2 of the Determinations by the Industry Body (Gas Industry Co) under the Gas (Switching Arrangements) Rules 2008, dated 20 February 2009.

Summary registry statistics – January 2011

ICP enquiries processed in month (Online)	23,476
ICP enquiries processed in month (Offline)	9,583,387
Total ICP enquiries processed in month	9,606,863
ICPs added to the Registry in month	210
ICPs changed in month	1,326
ICPs decommissioned in month	9
Valid standard switch requests (GNT-S) received in month	767
Valid move switch requests (GNT-SM) received in month	1,379
Valid switch requests (GNT) received in month	2,146
Valid switch acceptance notices (GAN) received in month	1,930
Valid switch transfer notices (GTN) received in month	1,803
Valid switch withdrawal requests (GNW) received in month	287
Valid switch withdrawal acceptances (GAW-A) received in month	284
Valid switch withdrawal rejections (GAW-R) received in month	12
Valid switch reading renegotiation requests (GNC) received in month	68
Valid switch reading renegotiation acceptances (GAC-A) received in month	63
Valid switch reading renegotiation rejections (GAC-R) received in month	2

Note: A switch transfer notice (GTN) is the last stage required to complete the switching process. This statistic indicates the number of switches completed in the month.

Switching activity – historical



ICPs by status – January 2011

The meaning of the ICP status codes are as follows:

ACTC—Active contracted (gas is able to flow and the customer has a contract with a retailer)

ACTV—Active vacant (gas is able to flow and the premises is vacant)

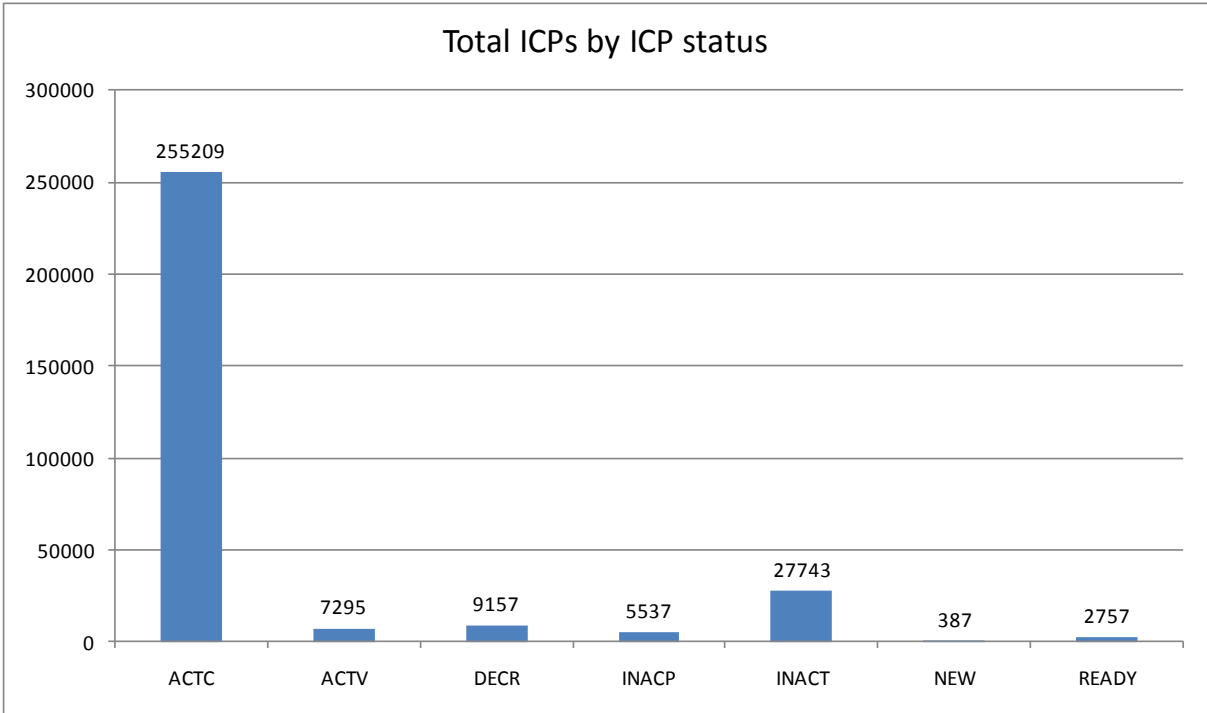
DECR—Decommissioned

INACP—Inactive permanent (gas unable to flow due to a permanent disconnection)

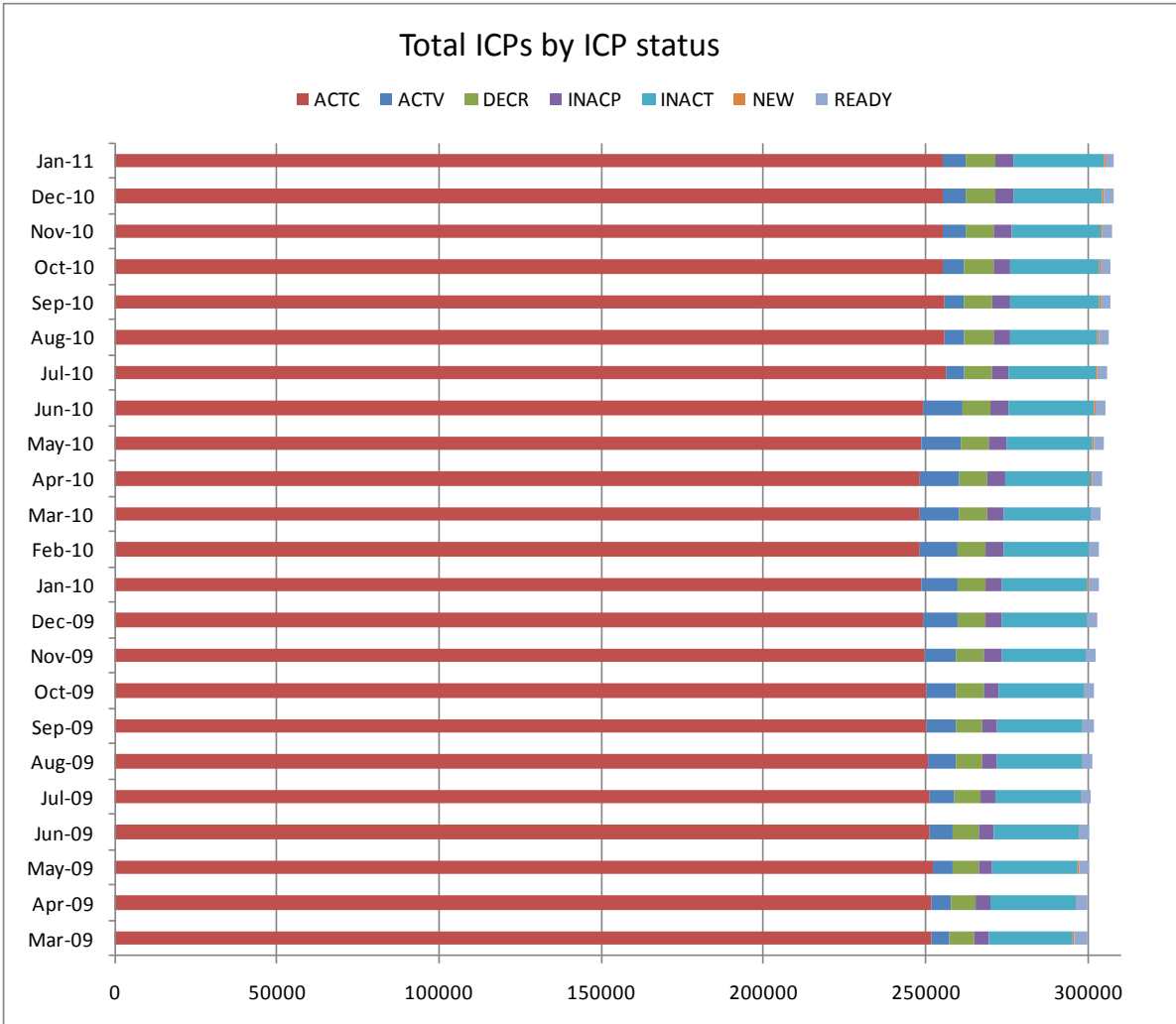
INACT—Gas unable to flow due to a temporary disconnection

NEW—Newly created ICP, gas not yet able to flow

READY—New ICP, gas able to flow, awaiting uplift by retailer

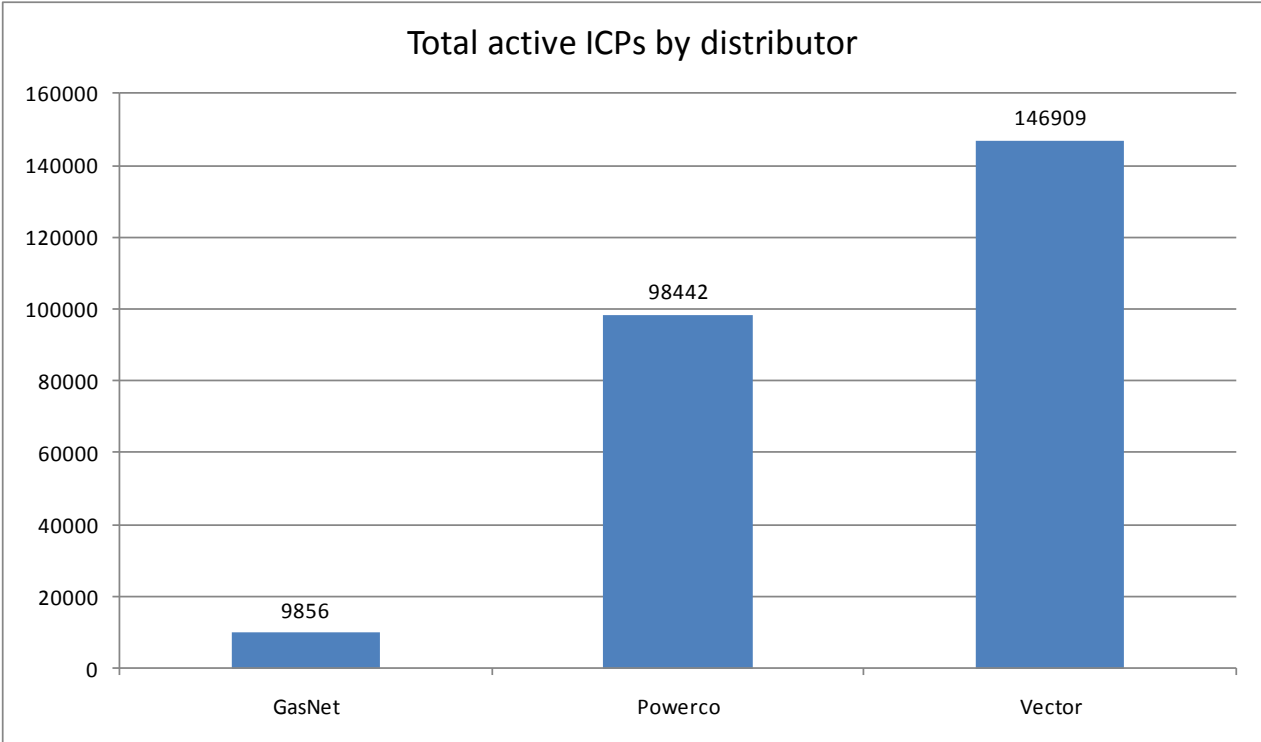
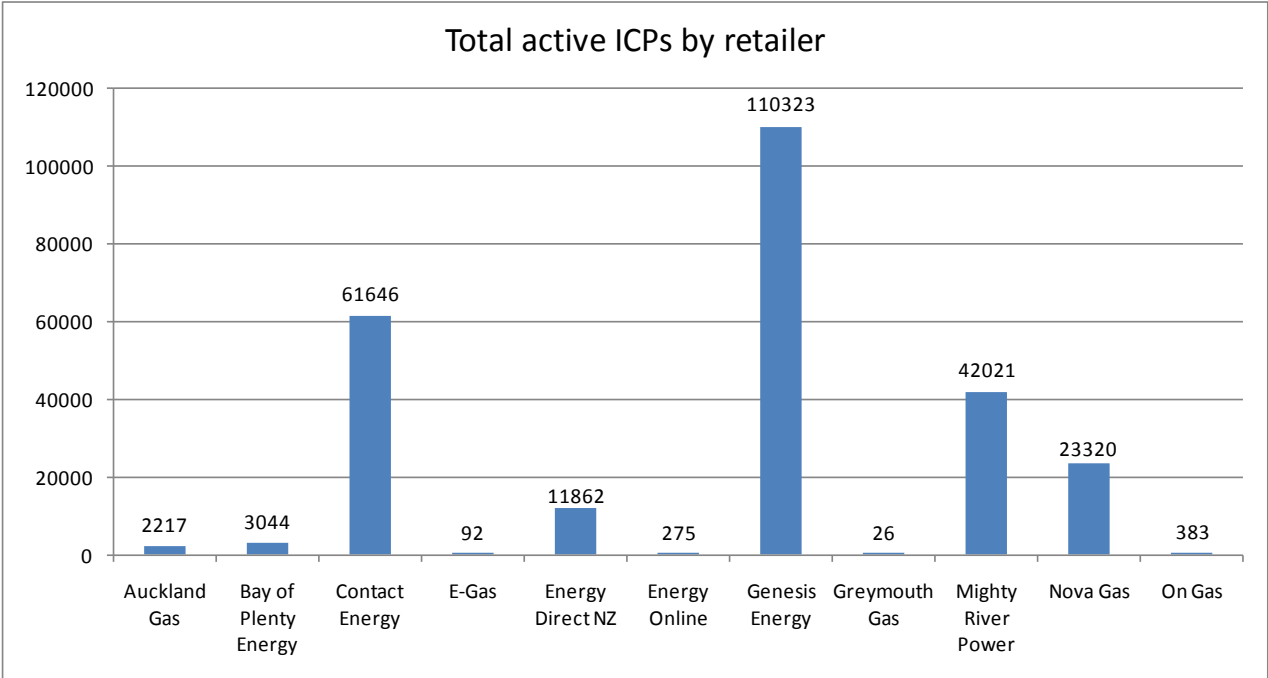


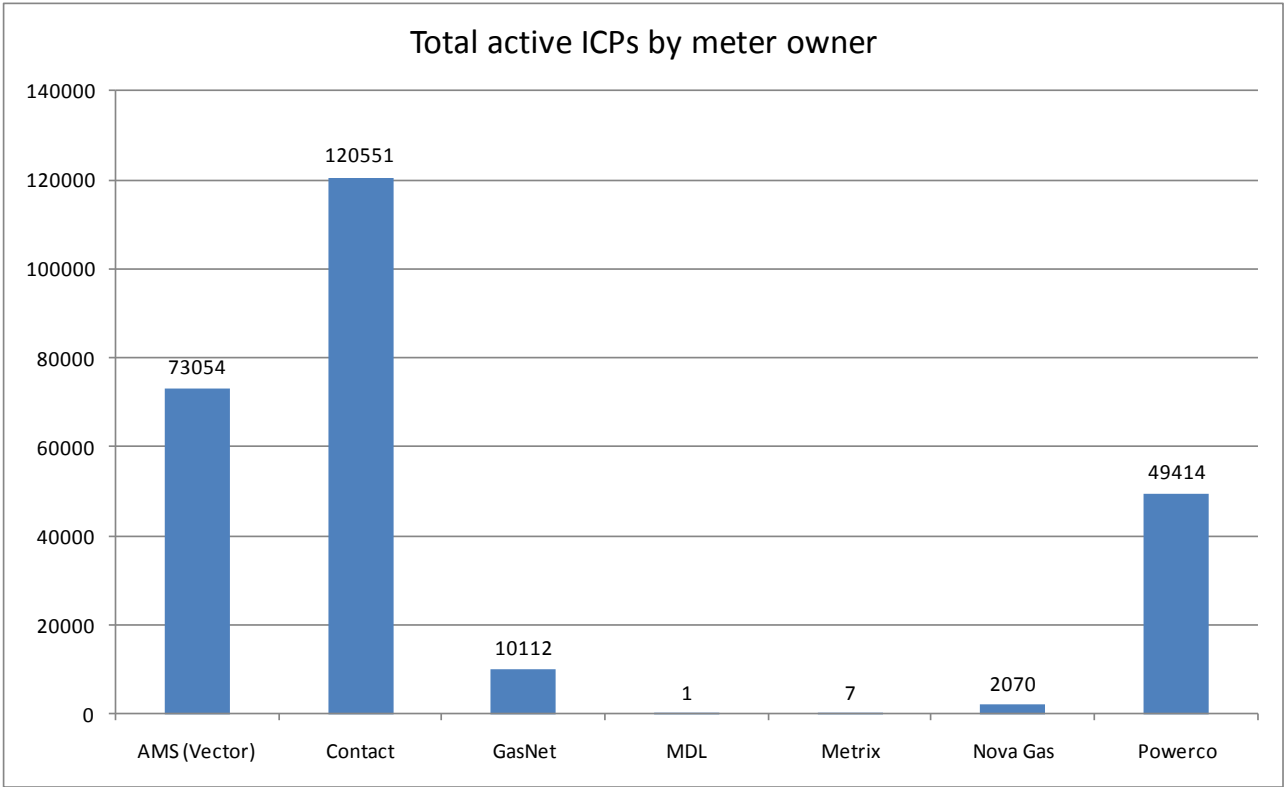
ICPs by status – historical



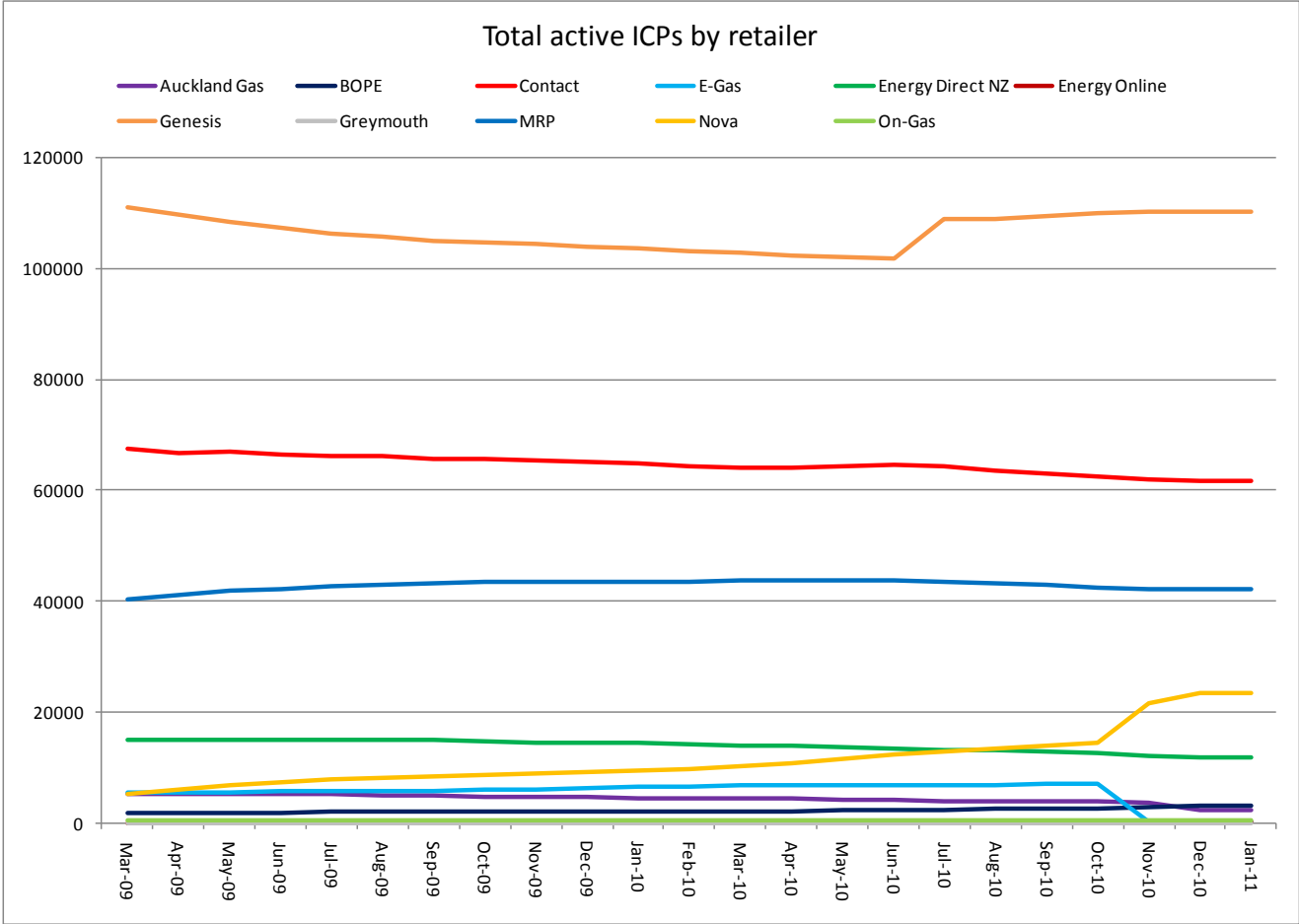
Market shares – January 2011

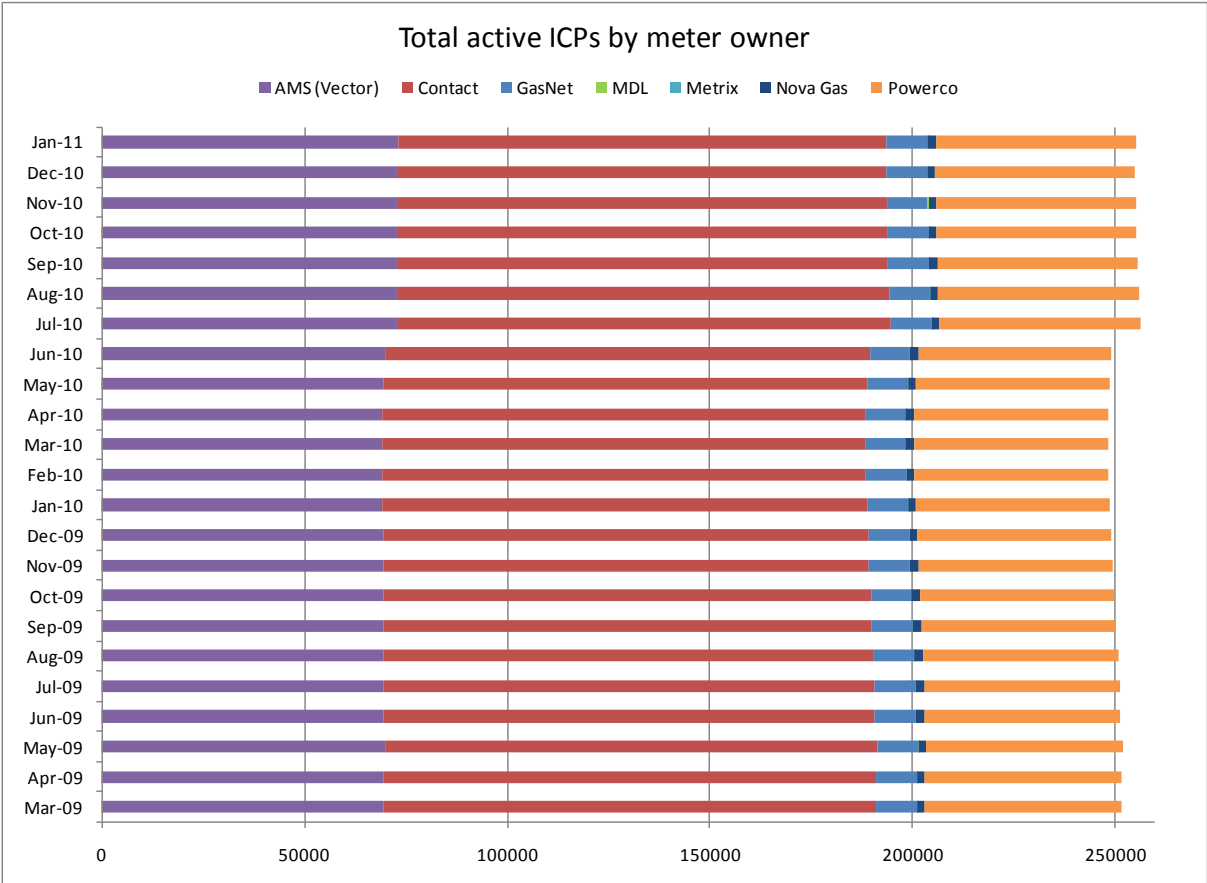
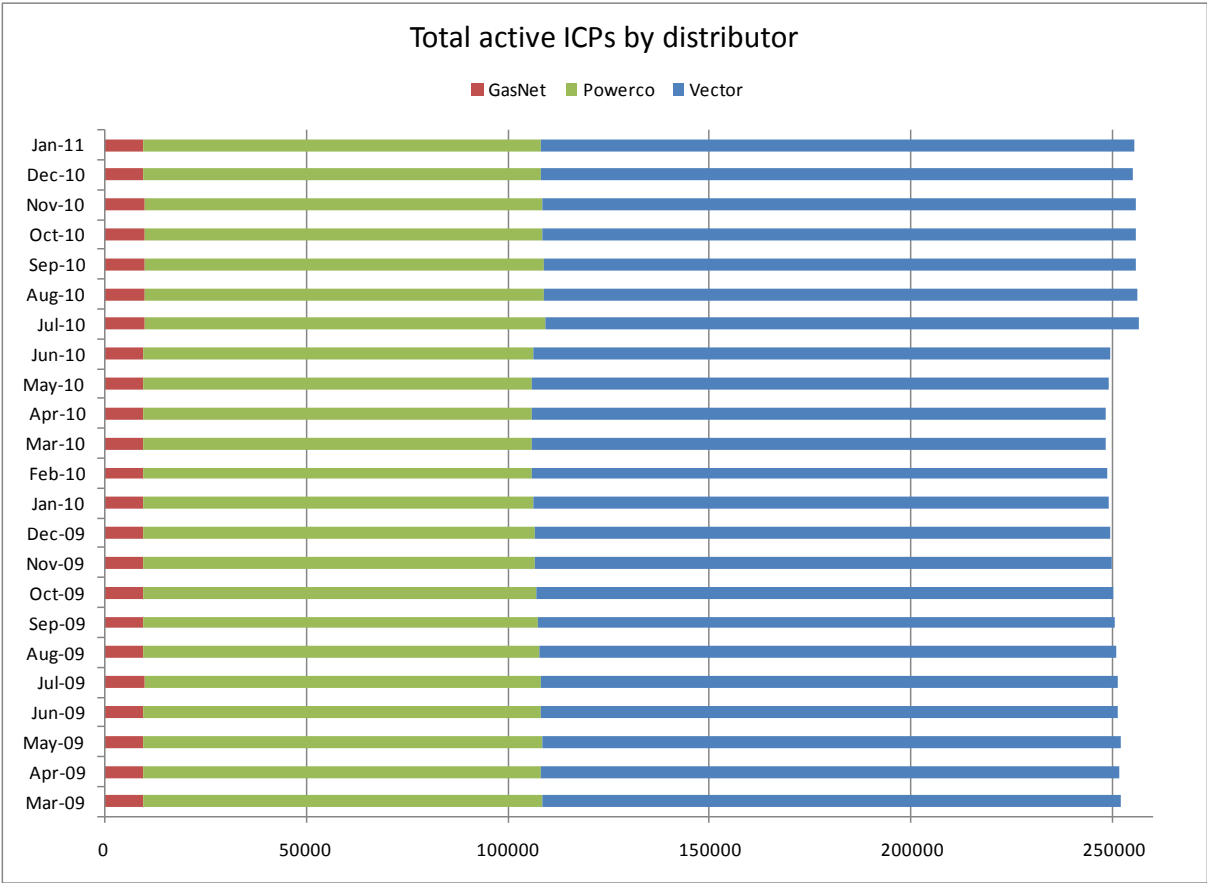
The following charts show the distribution of active-contracted ICPs by retailer, distribution company and meter owner respectively.





Market shares – historical





Active ICPs by gas gate and responsible retailer – January 2011

The following table shows the distribution of active ICPs by gas gate, and the distribution by retailer at each gas gate.

The responsible retailer codes are as follows:

AGCL—Auckland Gas Company

BOPE—Bay of Plenty Energy

CTCT—Contact Energy

EGAS—E-Gas 2000

EGLT—E-Gas Ltd

EDNZ—Energy Direct NZ (Wanganui Gas)

GENG—Genesis Energy

GEND—Genesis Energy

GEOL—Energy Online

GMTH—Greymouth Gas

MEEN—Mighty River Power

GNVG—Nova Gas

GNGC—OnGas (Vector)

Gas Gate	AGCL	BOPE	CTCT	EDNZ	EGAS	EGLT	GEND	GENG	GEOL	GMTH	GNGC	GNVG	MEEN	Total
ALF15501											1			1
ASH34301			54	32				53				60	8	207
BAL08201										1				1
BAL09626										1				1
BEL24510			1701	35	1	1	1	17366	5		10	1837	1495	22452
BMC17901	70		449	2	1	1		345	1		3	153	701	1726
BRO36301											1			1
CAM17201			63					1481				46	173	1763
DAN05001			75			2		10			1	21		109
DRU15101			13			1		2			2	7	3	28
DRU15102			6					8			4	6	5	29
EGC30701			1											1
EGC30702		2	1					3				1		7
ELM12301		7	49	37				240			3	5		341
FLD03001			460	243			2	444			1	527	37	1714
FLH21901			1	3				2						6
FOX22101			219	11			1	22	5		1	25	16	300
GIS07810			841	227		3	3	2073			3	159		3309
GLB03401											1			1
HAR11801								1			4			5
HEN74101	481		7130	4	1	8	2	5355	13	1	17	802	7055	20869
HPS02993							1							1
HRU16101							1	1				2		4

Gas Gate	AGCL	BOPE	CTCT	EDNZ	EGAS	EGLT	GEND	GENG	GEOL	GMTH	GNGC	GNVG	MEEN	Total
HST05210			3095	297		2	2	373	142		6	444		4361
HTK08301			2					13					3	18
HTL16601			4				1	104			3	5	4	121
HTV11301	1	13	1496			8	3	22601			50	508	2198	26878
HUN15301	1			1							2			4
HWA20801		64	447	330		2		1874			4	69		2790
IGW11901		29	86	106				330				12		563
KAP12901			2					2						4
KAW04405		129	8	1				110				5		253
KAW04410											1			1
KAW04411											1			1
KIG16801			4									1	1	6
KIH19101			42			2	1	1230			1	38	45	1359
KIN02601								4			2		1	7
KIN04310											1			1
KIW34201										1				1
KIW34202								1			1			2
KKI23701			2									1		3
KPA12401		3	3	5				47						58
KRG24101			1	1								2		4
KTK23901											1			1
KUK22401			6					18				4		28
KUR33601											1			1

Gas Gate	AGCL	BOPE	CTCT	EDNZ	EGAS	EGLT	GEND	GENG	GEOL	GMTH	GNGC	GNVG	MEEN	Total
LAB20201			8	65				37				6	1	117
LCF20010			1											1
LNB24301			55	31			1	97			4	88	10	286
LVN24401			2072	124		1		288	74		5	194	92	2850
MGK05401										1				1
MMU08001	1	415	118			2	4	3126		1	3	144	331	4145
MNA23402			39	33				171				4		247
MRV16301			1											1
MRV16302			33			1		552				23	76	685
MSD01801			1											1
MSD01802											1			1
MTG17301			1					32					1	34
MTN23801			59	248				143	1		2	12		465
MTP20601								6						6
MUT19001											1			1
NGW14501			11					137				2	6	156
NPL12101		1000	1105	1989		2	1	6420			6	252		10775
NPS00530			1											1
OAK18601								1						1
OKA13201		2	8	6				41				1		58
OKS32801												1	1	2
OKU16701		10	33	50				127				2		222
OPK13001		4	29	15				127						175

Gas Gate	AGCL	BOPE	CTCT	EDNZ	EGAS	EGLT	GEND	GENG	GEOL	GMTH	GNGC	GNVG	MEEN	Total
OPO32001		50	4				1	54				3		112
ORD24701			1	1								1		3
OTA22601			50	3		2		294				26	6	381
OTB00301			1											1
OTO14101			4					160				15		179
PAH23101								14						14
PAH23201								1				1		2
PAP06603	1		32				1	17				7	56	114
PAP06610	171		4321	5	1	4	3	702	2	1	56	491	3294	9051
PAU20101			512	46		1		2396			2	192	93	3242
PGH15901			1											1
PGU13101								14						14
PHT04901			41					36			1	11		89
PIR31101								44					5	49
PLN24201			3643	1324		3	1	3865	6		21	5585	289	14737
PPA33201			1					7						8
PTA20901		11	15	24				130			2	3		185
PTR32601		3	13					295			1	19	11	342
PUK04201	6		64				1	18				29	54	172
RAG33401												1		1
RAM15201			1								2			3
ROT08101		265	274			4		2696			12	218	411	3880
RPR30801			2					21				1	1	25

Gas Gate	AGCL	BOPE	CTCT	EDNZ	EGAS	EGLT	GEND	GENG	GEOL	GMTH	GNGC	GNVG	MEEN	Total
STR10201		20	102	98			1	652				25		898
TAC31001											1			1
TAT16401										1				1
TAU07001		103	241	2		2		1358			1	160	165	2032
TCC00201			1											1
THO22701			2					10				2		14
TIR33501			1											1
TIR33502		2	2			1		53				11	6	75
TKN17001			1					144			1	9		155
TKP05101												1		1
TKR19701		4	41					886			1	52	41	1025
TKS17401			1					16		1	2	1		21
TPK33301		27	5				1	537				26	24	620
TRC02003			1											1
TRG07701		587	129	3		2		3079			6	227	263	4296
TTK30601		2						4						6
TUK06501	1		6					1			2	1	1	12
TWA35610			8428	70		5	7	9620	12		31	7241	2423	27837
WAG21501			445	6045		2		2621		2	2	150		9267
WAK22801			184	22		1		1188				68	13	1476
WEL18301			2					19				3	1	25
WHG07501			77	2		1		951			5	99	84	1219
WHK32101		244	8			2		149			3	37	8	451

Gas Gate	AGCL	BOPE	CTCT	EDNZ	EGAS	EGLT	GEND	GENG	GEOL	GMTH	GNGC	GNVG	MEEN	Total
WKE19201											1			1
WRK18901			22					152			2	15	64	255
WST03610	1457		22071	10	3	13	8	5933	11	14	74	2648	21042	53284
WTA16501						1		38		1		3	1	44
WTG06910			540	12		2	1	4537	3		3	390	522	6010
WTK33901	7		270				1	1325				30	698	2331
WTK33902	20		129			2		191				22	182	546
WTR12001		48	120	299		1		621			2	27		1118
WTT20301											1			1
WVY23601			1				1	5						7
Total	2217	3044	61646	11862	7	85	51	110272	275	26	383	23320	42021	255209