

Gas Registry statistics – January 2010

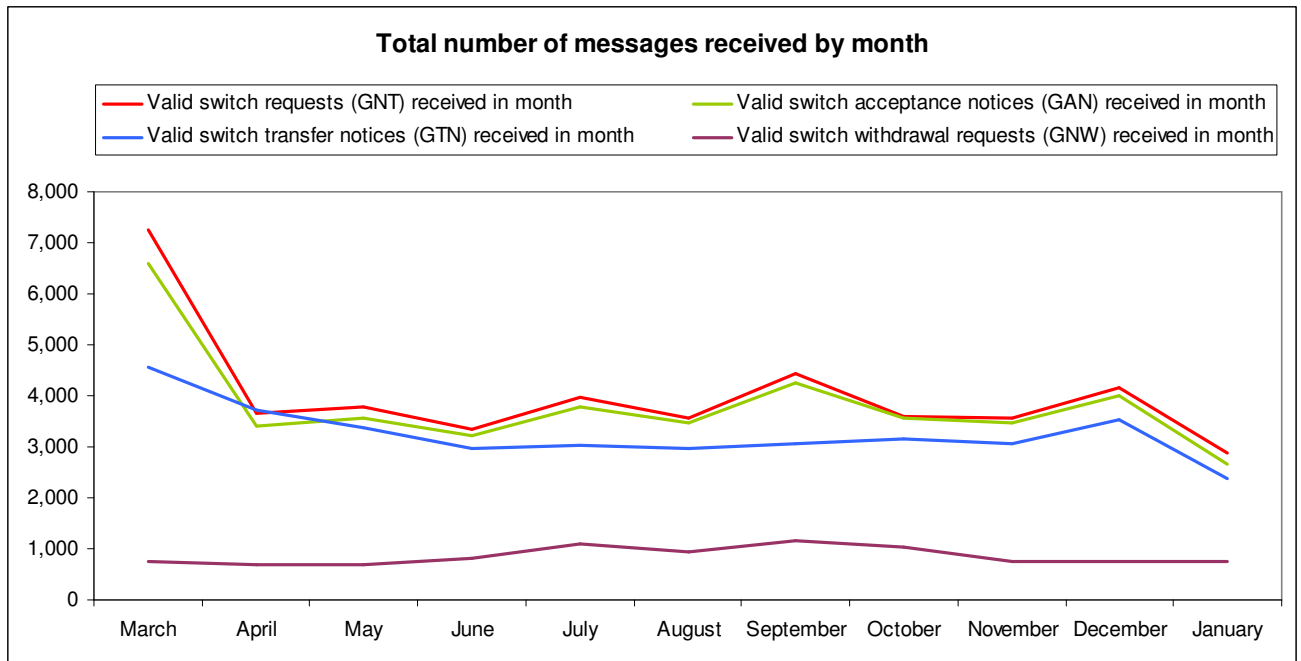
The following report provides statistics and charts illustrating gas registry usage, switching volumes and breakdowns of retailer, distributor and meter owner market shares. The information is provided in accordance with version 1.2 of the Determinations by the Industry Body (Gas Industry Co) under the Gas (Switching Arrangements) Rules 2008, dated 20 February 2009.

Summary registry statistics

ICP enquiries processed in month (Online)	26,593
ICP enquiries processed in month (Offline)	2,731,853
Total ICP enquiries processed in month	2,758,446
ICPs added to the Registry in month	282
ICPs changed in month	1,003
ICPs decommissioned in month	7
Valid standard switch requests (GNT-S) received in month	1,390
Valid move switch requests (GNT-SM) received in month	1,473
Valid switch requests (GNT) received in month	2,863
Valid switch acceptance notices (GAN) received in month	2,654
Valid switch transfer notices (GTN) received in month	2,381
Valid switch withdrawal requests (GNW) received in month	761
Valid switch withdrawal acceptances (GAW-A) received in month	728
Valid switch withdrawal rejections (GAW-R) received in month	24
Valid switch reading renegotiation requests (GNC) received in month	59
Valid switch reading renegotiation acceptances (GAC-A) received in month	57
Valid switch reading renegotiation rejections (GAC-R) received in month	1

Note: A switch transfer notice (GTN) is the last stage required to complete the switching process. This statistic indicates the number of switches completed in the month.

Switching activity



ICPs by status – January 2010

The meaning of the ICP status codes are as follows:

ACTC—Active contracted (gas is able to flow and the customer has a contract with a retailer)

ACTV—Active vacant (gas is able to flow and the premises is vacant)

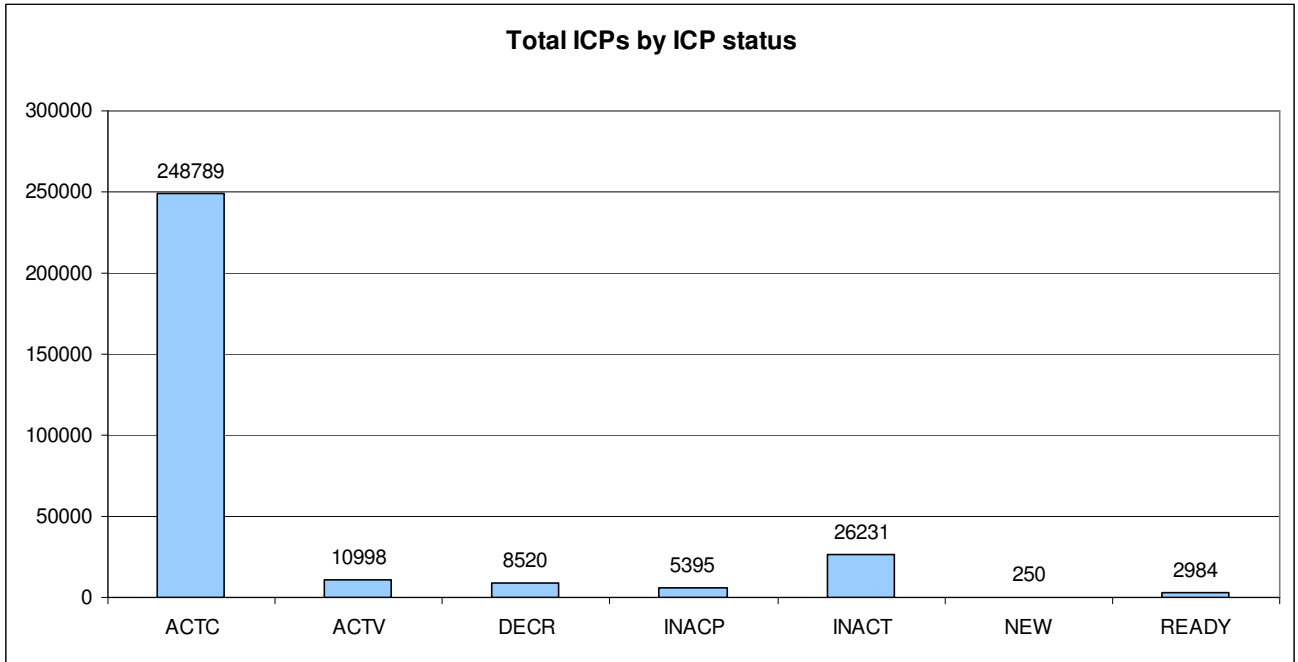
DECR—Decommissioned

INACP—Inactive permanent (gas unable to flow due to a permanent disconnection)

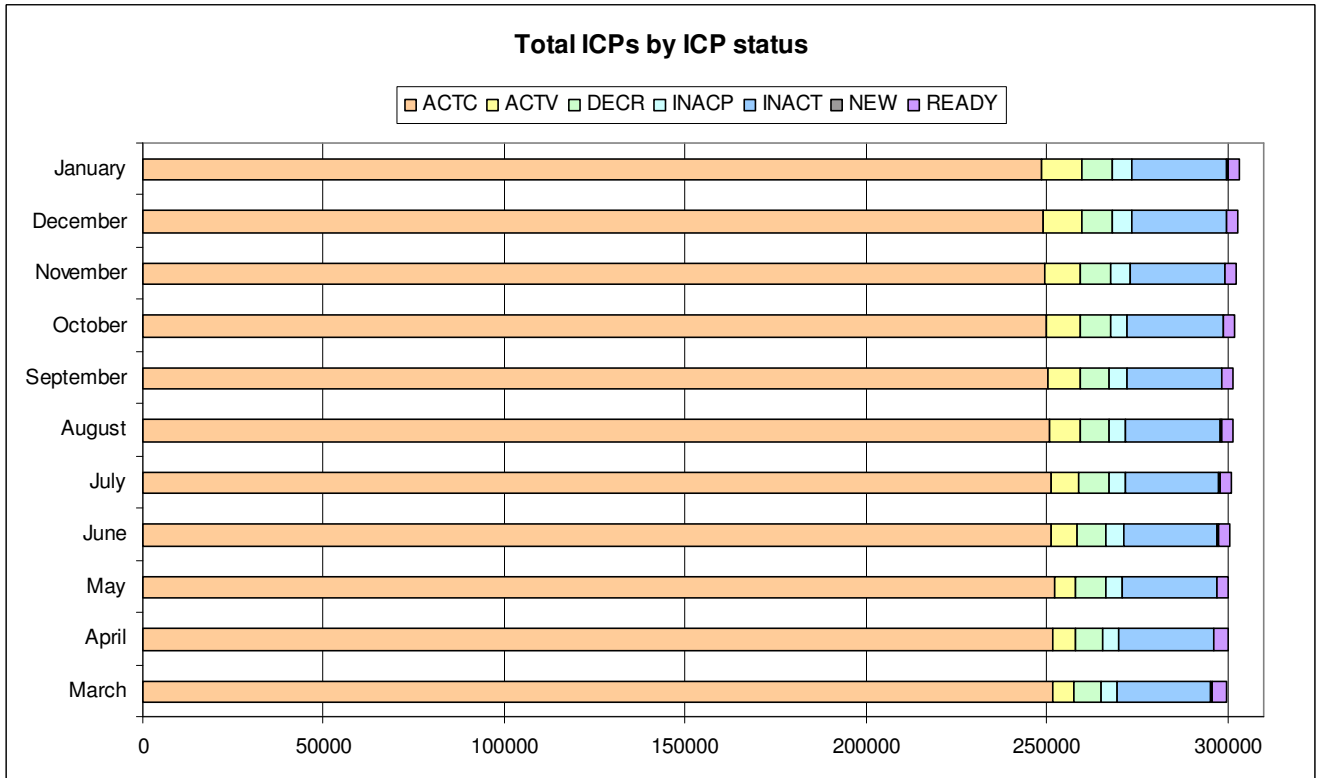
INACT—Gas unable to flow due to a temporary disconnection

NEW—Newly created ICP, gas not yet able to flow

READY—New ICP, gas able to flow, awaiting uplift by retailer

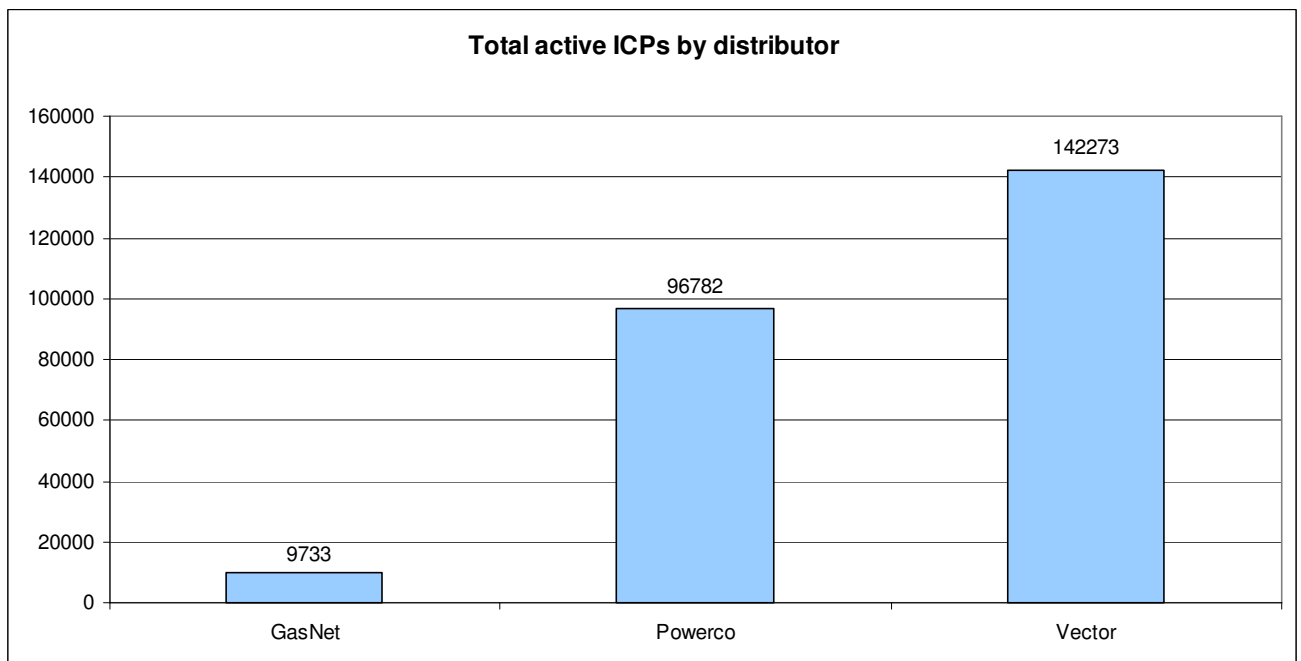
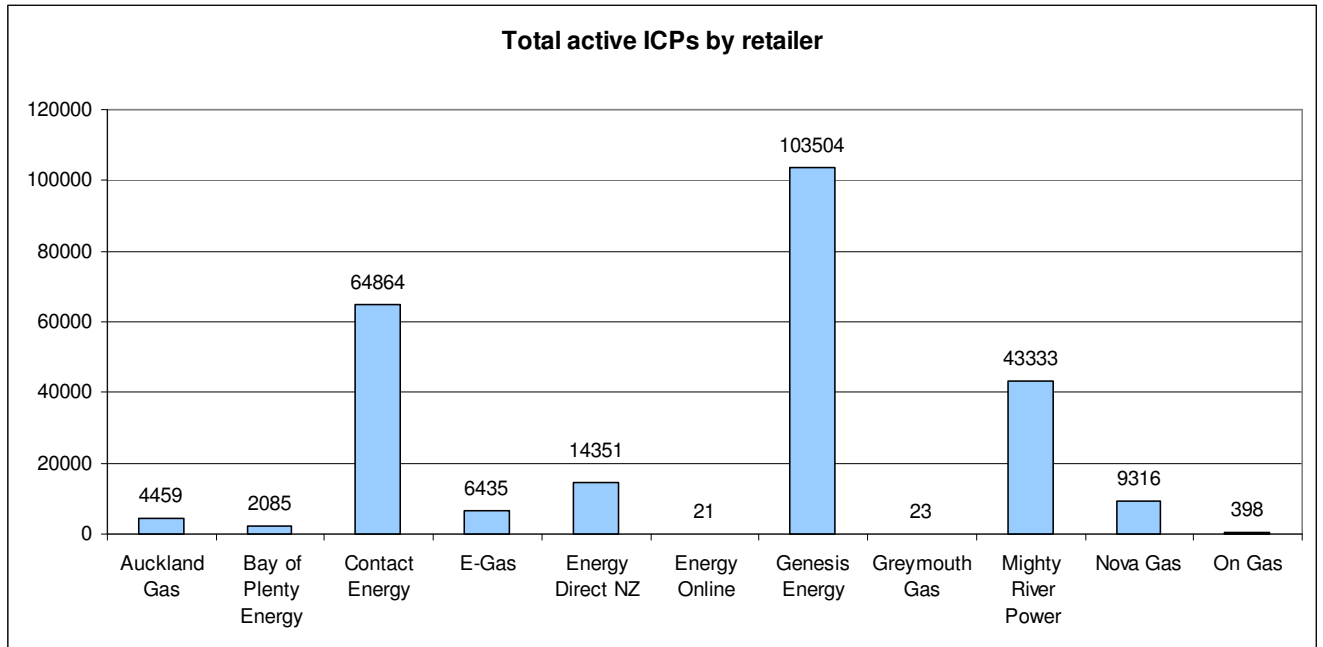


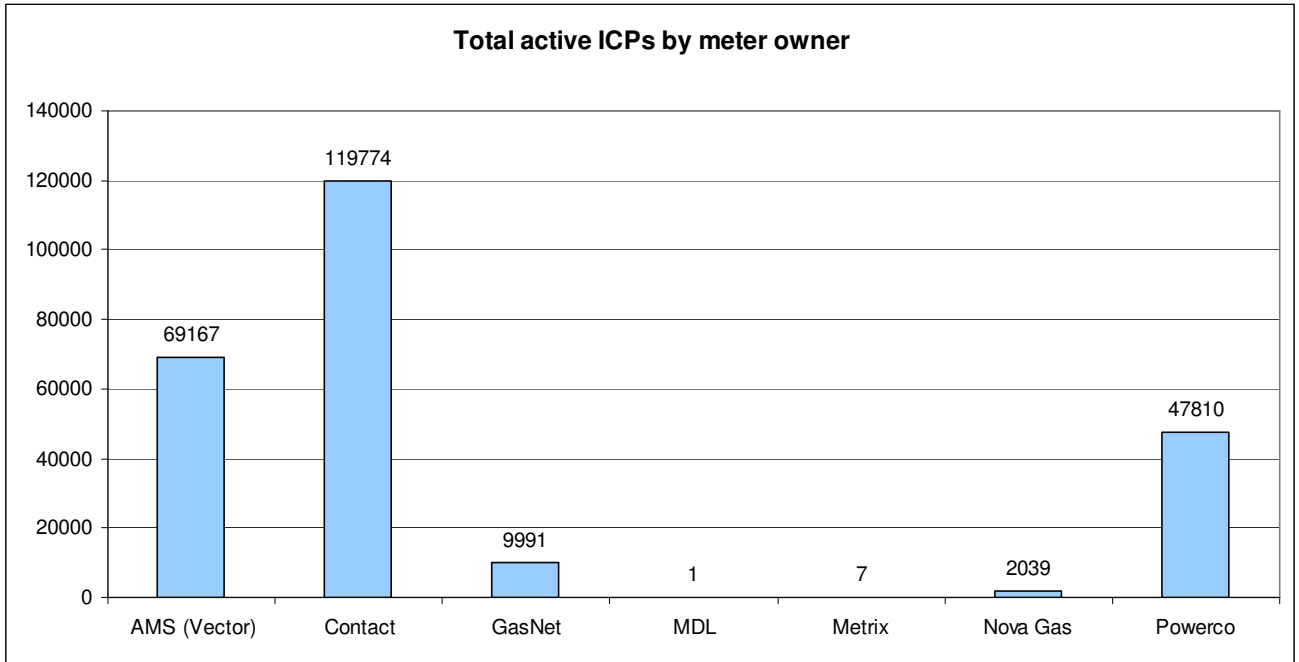
ICPs by status – historical



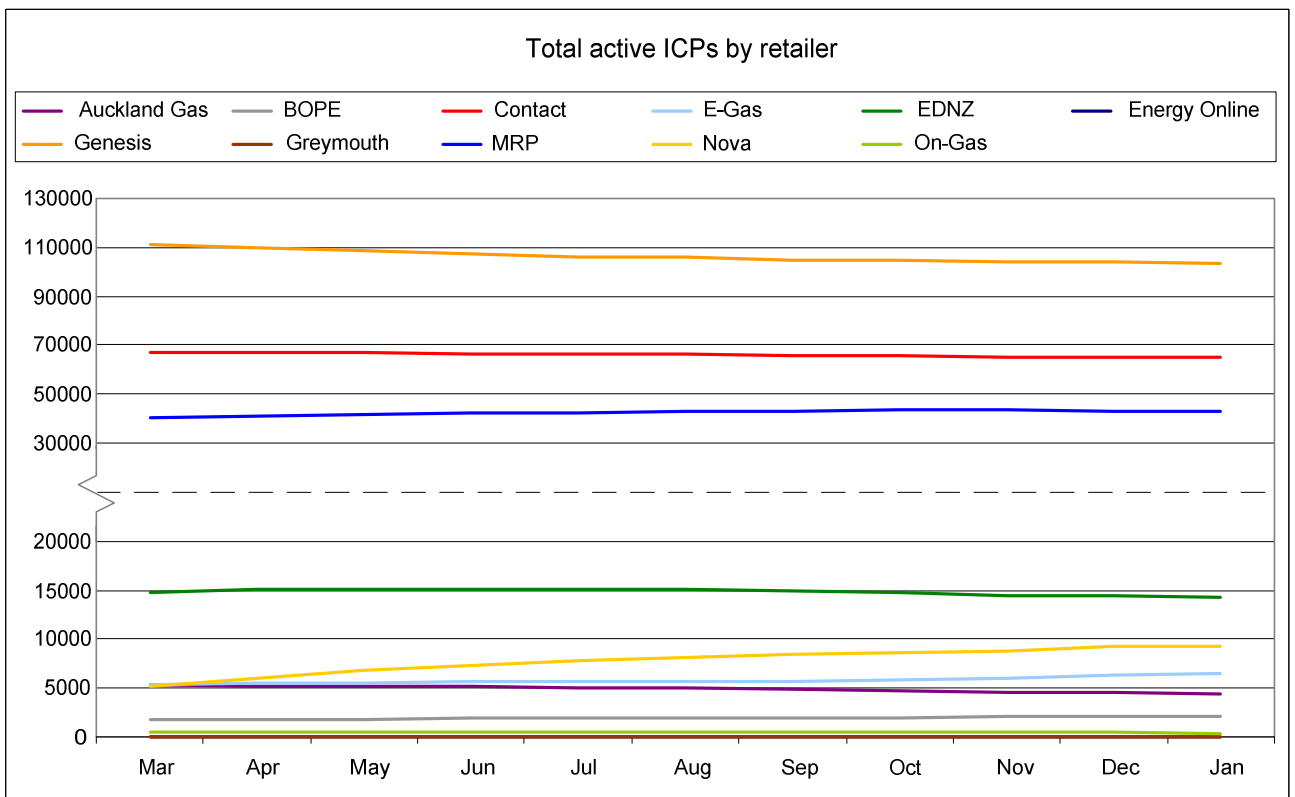
Market shares – January 2010

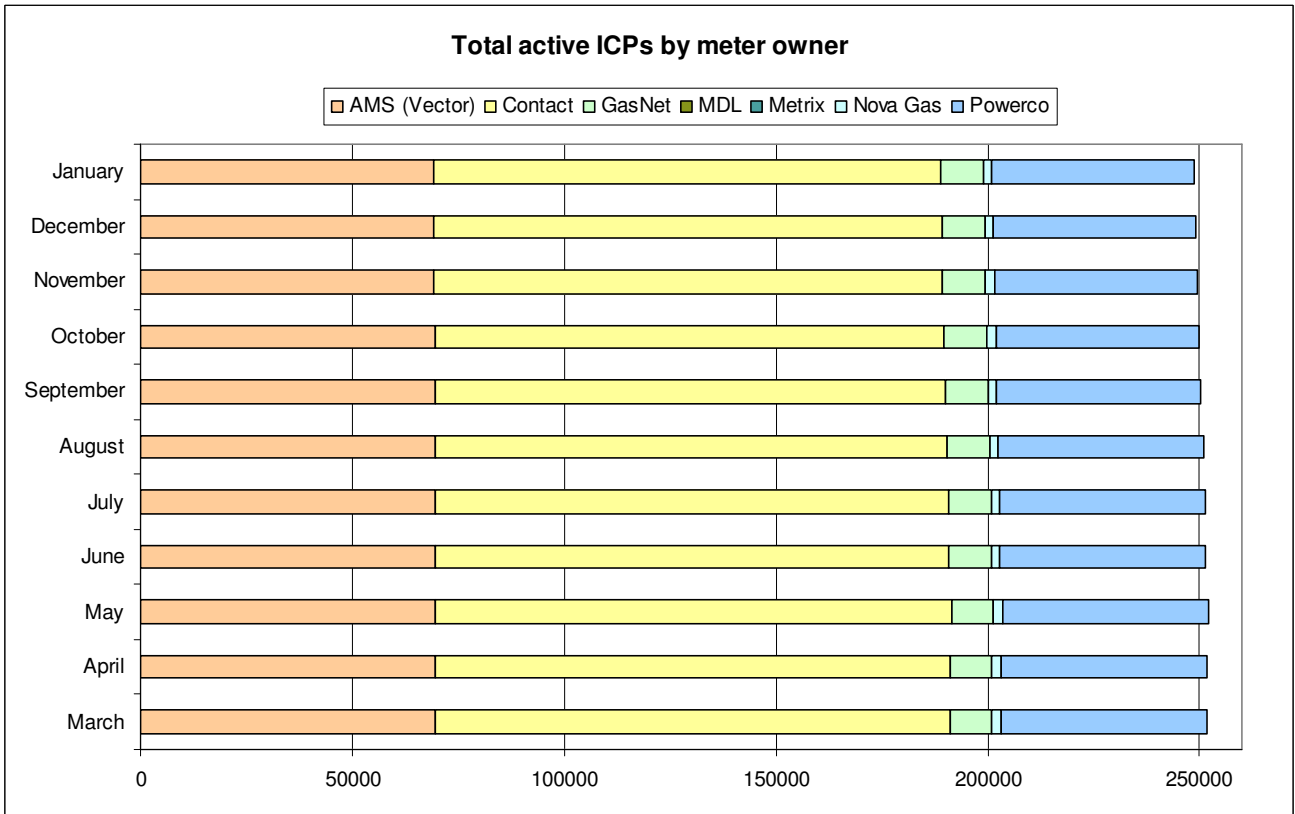
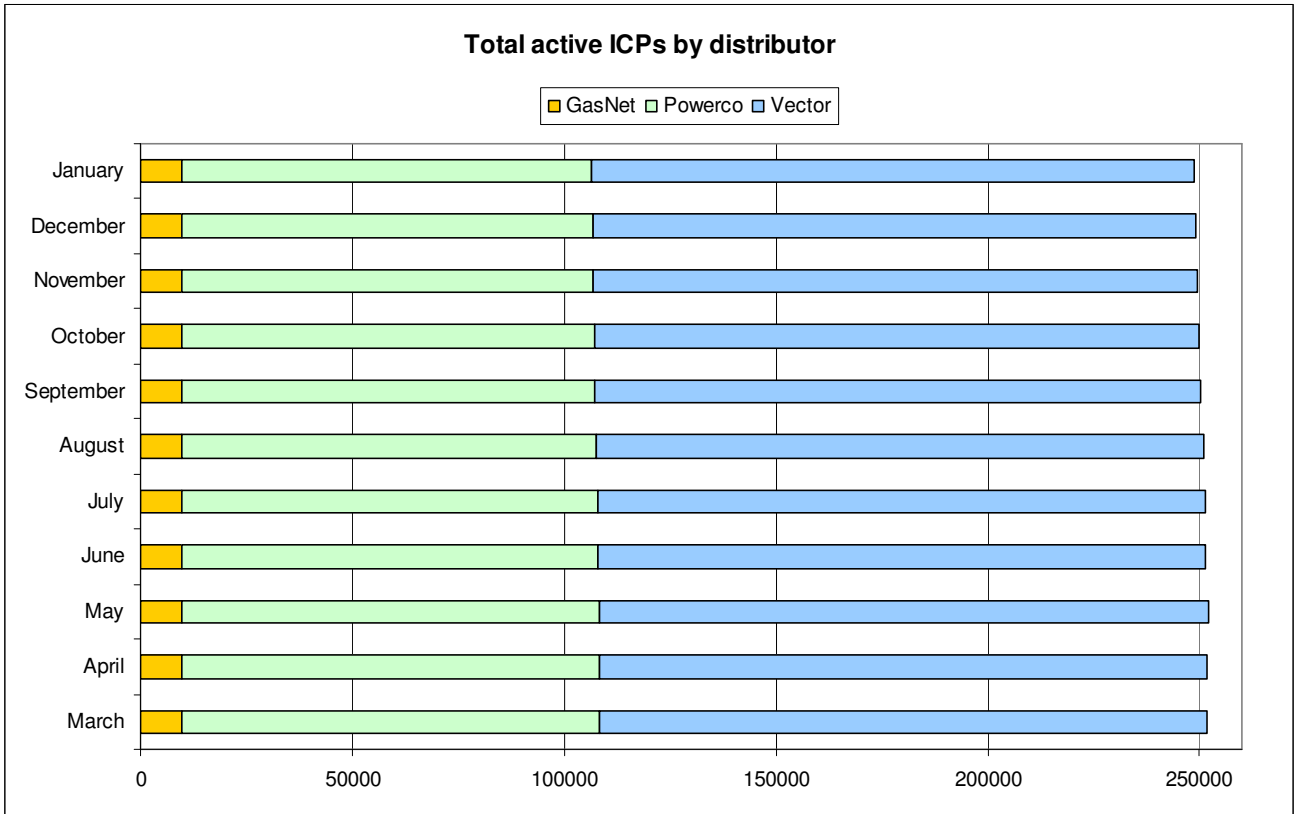
The following charts show the distribution of active-contracted ICPs by retailer, distribution company and meter owner respectively.





Market shares – historical





Active ICPs by gas gate and responsible retailer – January 2010

The following table shows the distribution of active ICPs by gas gate, and the distribution by retailer at each gas gate.

The responsible retailer codes are as follows:

AGCL—Auckland Gas Company

BOPE—Bay of Plenty Energy

CTCT—Contact Energy

EGAS—E-Gas 2000

EGLT—E-Gas Ltd

EDNZ—Energy Direct NZ (Wanganui Gas)

GENG—Genesis Energy

GEND—Genesis Energy

GEOL—Energy Online

GMTH—Greymouth Gas

MEEN—Mighty River Power

GNVG—Nova Gas

GNGC—OnGas (Vector)

Gas Gate	AGCL	BOPE	CTCT	EDNZ	EGAS	EGLT	GEND	GENG	GEOL	GMTH	GNGC	GNVG	MEEN	Grand Total
ALF15501											1			1
ASH34301			82	55		8		37					13	195
BEL24510			1668	15	198	412		16577			10	1106	1487	21473
BMC17901	162		377	2	12	47	1	256			4	24	756	1641
BRO36301											1			1
CAM17201	1		54			40		1370				1	177	1643
DAN05001			82		7	12		8			1	2		112
DRU15101	1		16		1	3		2			3	2	2	30
DRU15102			1			1		7			4	1	1	15
EGC30701			1											1
EGC30702		2	1			1		3						7
ELM12301			47	38		4		239			3	1		332
FLD03001			696	413	6	47		452			2	7	82	1705
FLH21901			2	3				1						6
FOX22101			251	14	7	8	1	17	1		1	13	3	316
GIS07810			812	230	1	146	3	2119			5	5		3321
GLB03401											1			1
HAR11801								1			4			5
HEN74101	957		6954	9	99	188	1	4266		1	19	72	7540	20106
HPS02993							1							1
HRU16101						1	1	1			1			4
HST05210			3296	316	69	271	1	284	11		7	48		4303
HTK08301								15					5	20
HTL16601						8	1	94			3		2	108
HTV11301	5	2	907		2	431	1	21525			51	114	2431	25469
HUN15301	1		1								2			4
HWA20801		19	415	339		66		1904			1	10		2754
IGW11901		11	70	118		8		341				3		551
KAP12901			2					2						4
KAW04405		134	9	1		5		115					1	265
KAW04410											1			1
KAW04411											1			1

Gas Gate	AGCL	BOPE	CTCT	EDNZ	EGAS	EGLT	GEND	GENG	GEOL	GMTH	GNGC	GNVG	MEEN	Grand Total
KIG16801			4			1							1	6
KIH19101	1		34			37		1189			2	1	49	1313
KIN02601								4			2		1	7
KIN04310											1			1
KIW34201										1				1
KIW34202								1			1			2
KKI23701			1									1		2
KPA12401		1	3	6				54						64
KRG24101			1	2		1								4
KTK23901											1			1
KUK22401			4			4		18						26
KUR33601											1			1
LAB20201			11	70		4		33				1		119
LNB24301			92	60		2		111			4	6	10	285
LVN24401			2314	135	38	86		255	7		5	52	31	2923
MGK05401										1				1
MMU08001	1	404	75		3	127	2	2971		2	3	14	333	3935
MNA23402			36	37	1	3		169				1		247
MRV16301			1			1							1	3
MRV16302			31			11		576				1	49	668
MSD01801			1											1
MSD01802											1			1
MTG17301						1		37					1	39
MTN23801			66	267		8		129			1	3		474
MTP20601								5						5
MUT19001											1			1
NGW14501			5			2		133					7	147
NPL12101		238	1189	2283	28	206	1	6578			10	40		10573
OAK18601								1						1
OKA13201			11	7		1		40						59
OKS32801						1							1	2
OKU16701		5	34	51				114				1		205

Gas Gate	AGCL	BOPE	CTCT	EDNZ	EGAS	EGLT	GEND	GENG	GEOL	GMTH	GNGC	GNVG	MEEN	Grand Total
OPK13001		1	26	13				126						166
OPO32001		45	3			4		53					1	106
ORD24701			1	1		1								3
OTA22601			46	3		19		305				2	3	378
OTO14101			3			13		155						171
PAH23201						1		7						8
PAP06603	7		12		1		1	7					35	63
PAP06610	391		4374	9	64	152	1	493		1	52	66	3436	9039
PAU20101			488	46	4	178		2316			2	2	82	3118
PGH15901			1					1						2
PGU13101								14						14
PHT04901			50			9		30			1			90
PIR31101								40					5	45
PLN24201			6520	2880	40	286		4205	2		20	104	539	14596
PPA33201								8					1	9
PTA20901			17	28		3		142			1	1		192
PTR32601		1	9			20		294			1		11	336
PUK04201	10		70	1	5	9		9				5	56	165
RAG33401											1			1
RAM15201			1								2			3
ROT08101		257	230	1	2	183	1	2643			11	34	432	3794
RPR30801			2			1		19					1	23
STR10201		7	89	103		23		664				3		889
TAC31001											1			1
TAT16401										1				1
TAU07001		106	169	2	1	147		1348			1	1	171	1946
THO22701			2			2		11						15
TIR33501			1											1
TIR33502		1				12		57					5	75
TKN17001			1			7		160			1	1		170
TKP05101												1		1
TKR19701		4	32		1	51		886			1	1	38	1014

Gas Gate	AGCL	BOPE	CTCT	EDNZ	EGAS	EGLT	GEND	GENG	GEOL	GMTH	GNGC	GNVG	MEEN	Grand Total
TKS17401			1			2	1	14		1	2			21
TPK33301		26	5			21		531			1		22	606
TRG07701		569	101			187	1	2929			5	12	253	4057
TTK30601		2						4						6
TUK06501	1		6					1			2	1	1	12
TWA35610			9185	48	210	570	2	8496			30	6979	2235	27755
WAG21501			444	6390		68		2161		1	4	65		9133
WAK22801			167	13		75		1180					8	1443
WEL18301			1	1		1		18					1	22
WHG07501			63	2	1	95		911			5	2	94	1173
WHK32101		241	8			36		170			3		7	465
WKE19201											1			1
WRK18901			18			8		164			2		51	243
WST03610	2877		22078	20	392	632	2	4275		13	76	320	21510	52195
WTA16501			1			1		34		1		3	1	41
WTG06910			532	6	67	124	1	4430			4	169	468	5801
WTK33901	13		209			10	1	1277				6	690	2206
WTK33902	31		110		3	4		167				1	192	508
WTR12001		9	129	313		14		665			8	7		1145
WTT20301											1			1
WVY23601			2				1	4						7
Grand Total	4459	2085	64864	14351	1263	5172	26	103478	21	23	398	9316	43333	248789