

# Gas Registry statistics – February 2010

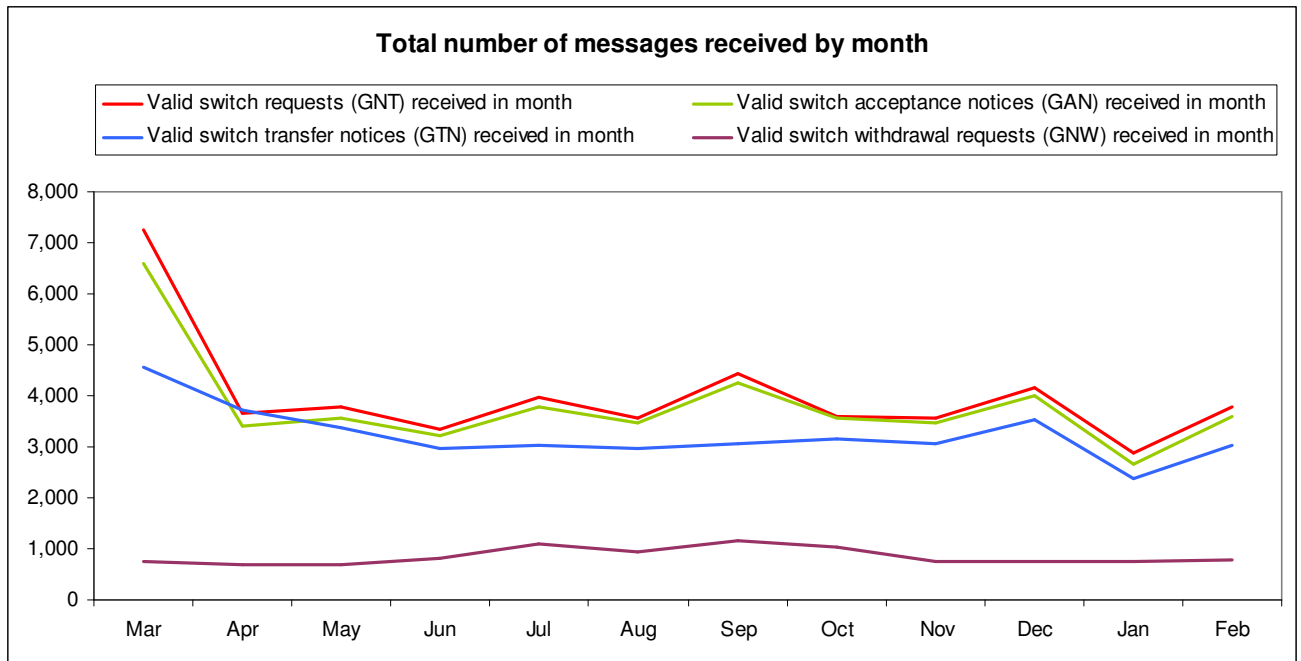
The following report provides statistics and charts illustrating gas registry usage, switching volumes and breakdowns of retailer, distributor and meter owner market shares. The information is provided in accordance with version 1.2 of the Determinations by the Industry Body (Gas Industry Co) under the Gas (Switching Arrangements) Rules 2008, dated 20 February 2009.

## Summary registry statistics

ICP enquiries processed in month (Online)	28,159
ICP enquiries processed in month (Offline)	2,896,447
<b>Total ICP enquiries processed in month</b>	<b>2,924,606</b>
ICPs added to the Registry in month	403
ICPs changed in month	1,128
ICPs decommissioned in month	26
Valid standard switch requests (GNT-S) received in month	2,291
Valid move switch requests (GNT-SM) received in month	1,477
<b>Valid switch requests (GNT) received in month</b>	<b>3,768</b>
Valid switch acceptance notices (GAN) received in month	3,597
<b>Valid switch transfer notices (GTN) received in month</b>	<b>3,039</b>
Valid switch withdrawal requests (GNW) received in month	772
Valid switch withdrawal acceptances (GAW-A) received in month	768
Valid switch withdrawal rejections (GAW-R) received in month	10
Valid switch reading renegotiation requests (GNC) received in month	85
Valid switch reading renegotiation acceptances (GAC-A) received in month	82
Valid switch reading renegotiation rejections (GAC-R) received in month	4

Note: A switch transfer notice (GTN) is the last stage required to complete the switching process. This statistic indicates the number of switches completed in the month.

## Switching activity



## ICPs by status – February 2010

The meaning of the ICP status codes are as follows:

ACTC—Active contracted (gas is able to flow and the customer has a contract with a retailer)

ACTV—Active vacant (gas is able to flow and the premises is vacant)

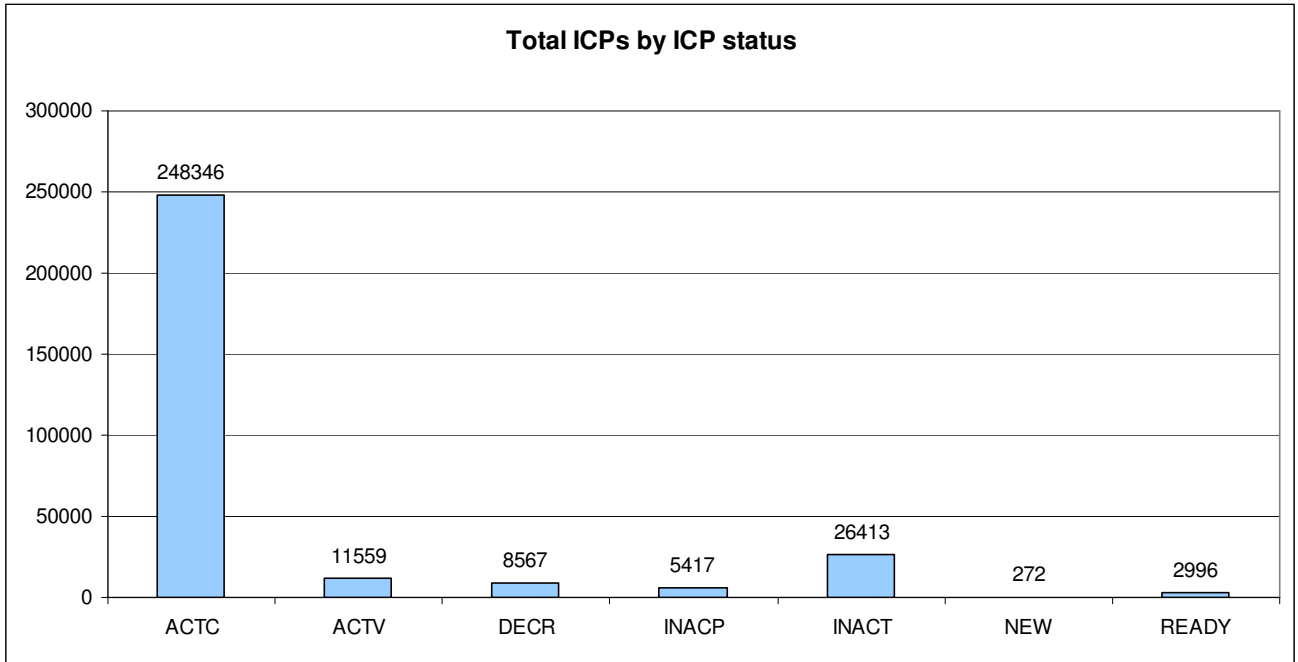
DECR—Decommissioned

INACP—Inactive permanent (gas unable to flow due to a permanent disconnection)

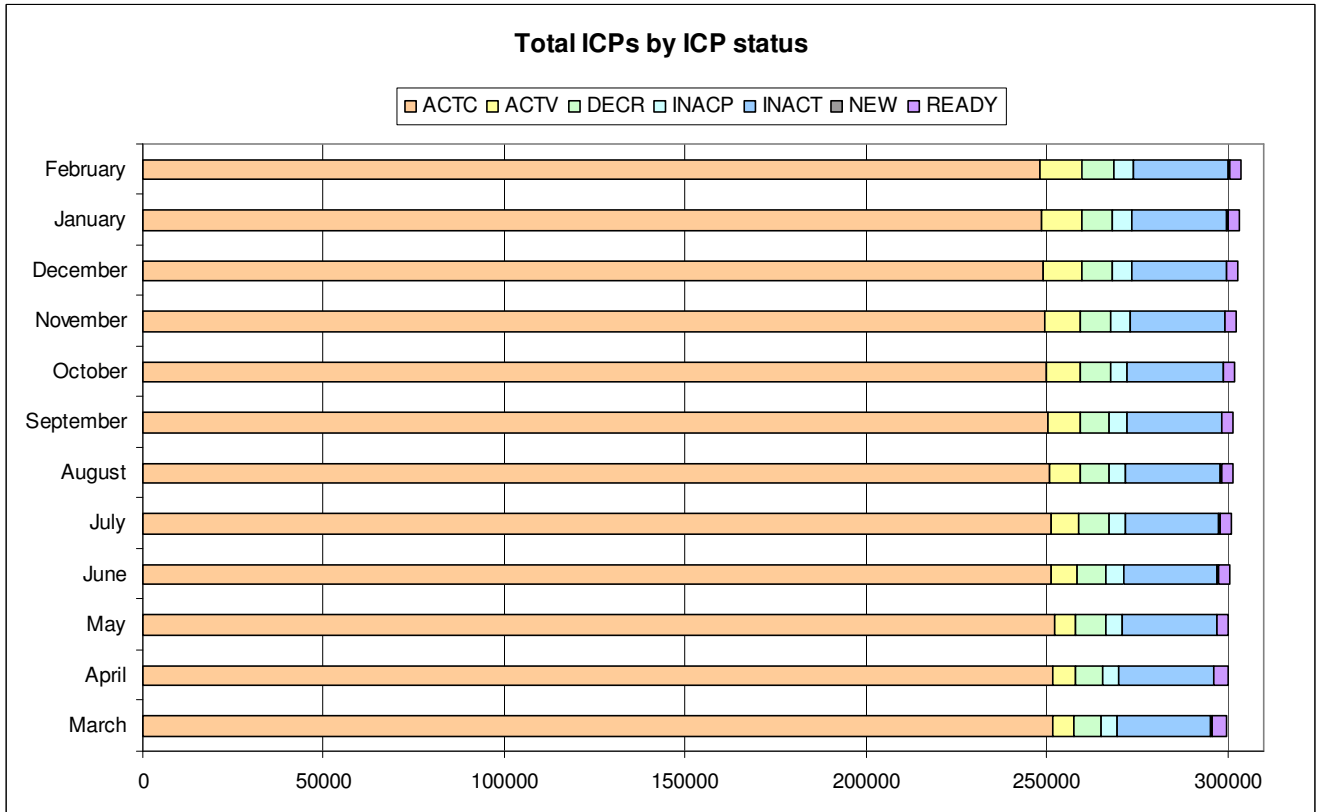
INACT—Gas unable to flow due to a temporary disconnection

NEW—Newly created ICP, gas not yet able to flow

READY—New ICP, gas able to flow, awaiting uplift by retailer

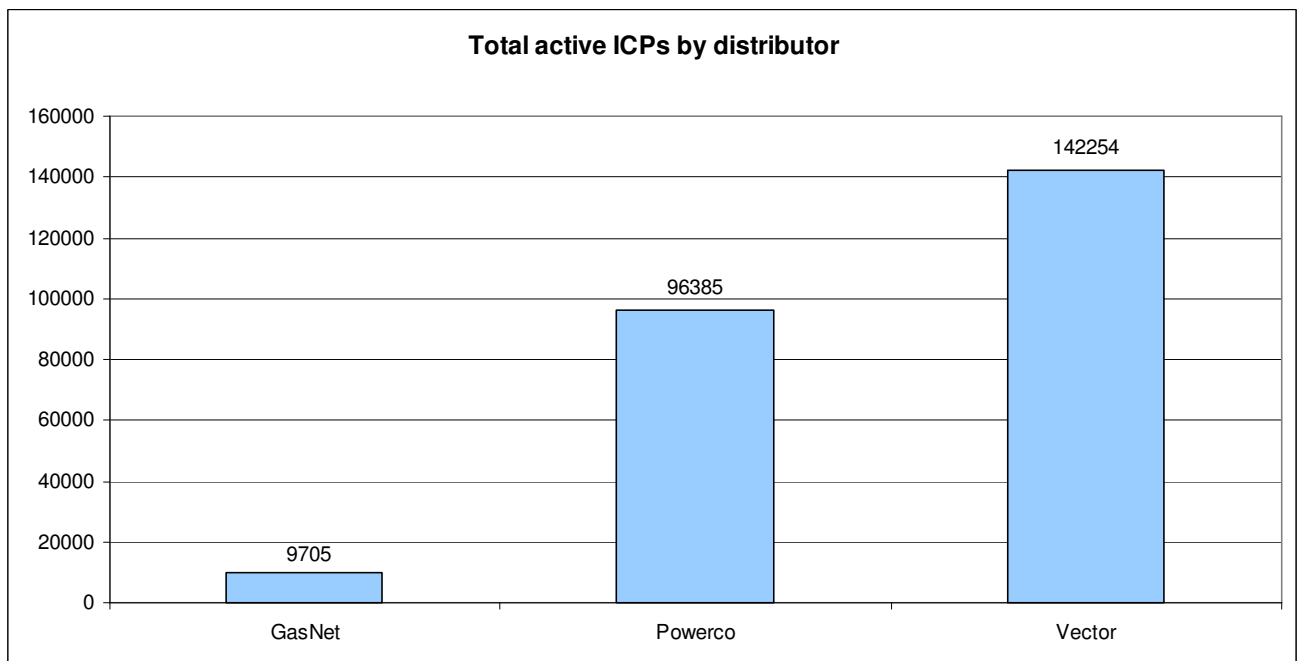
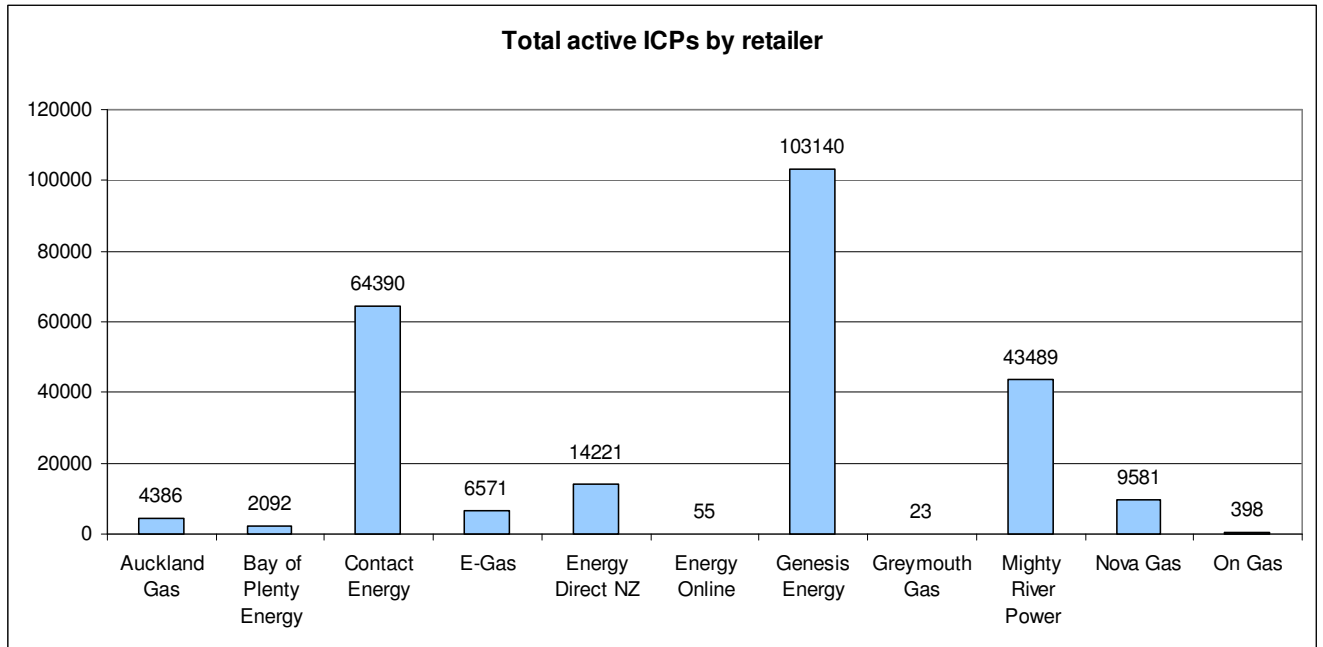


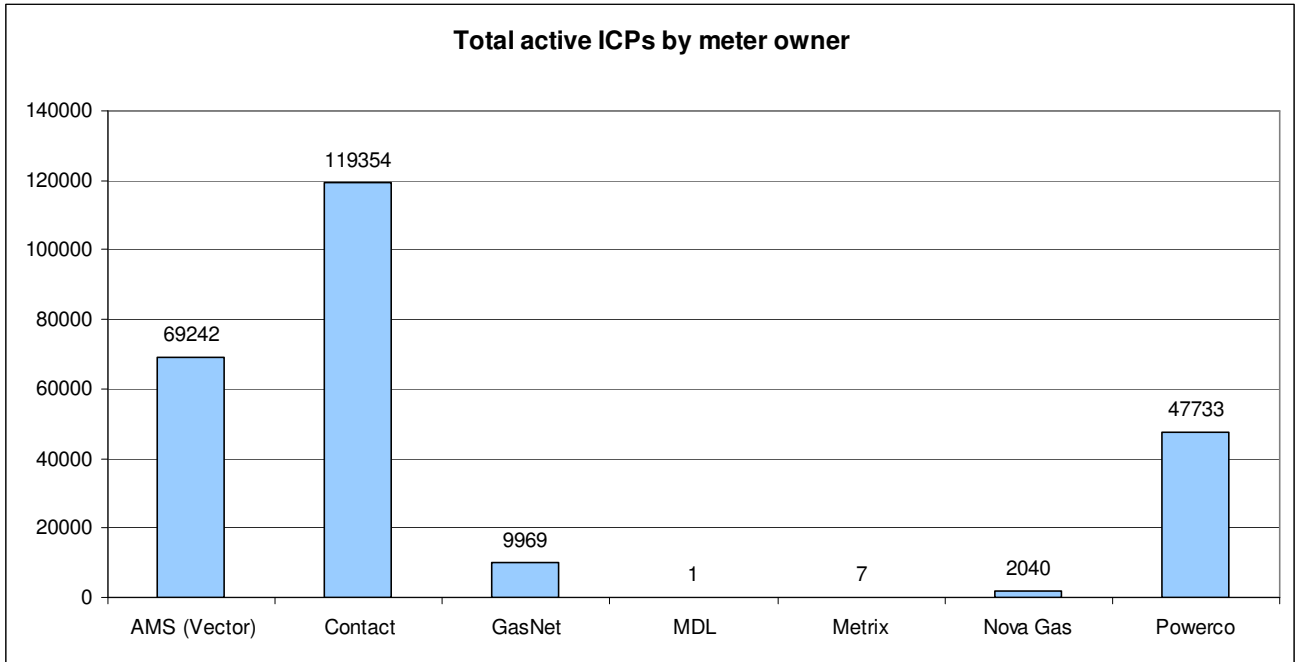
### ICPs by status – historical



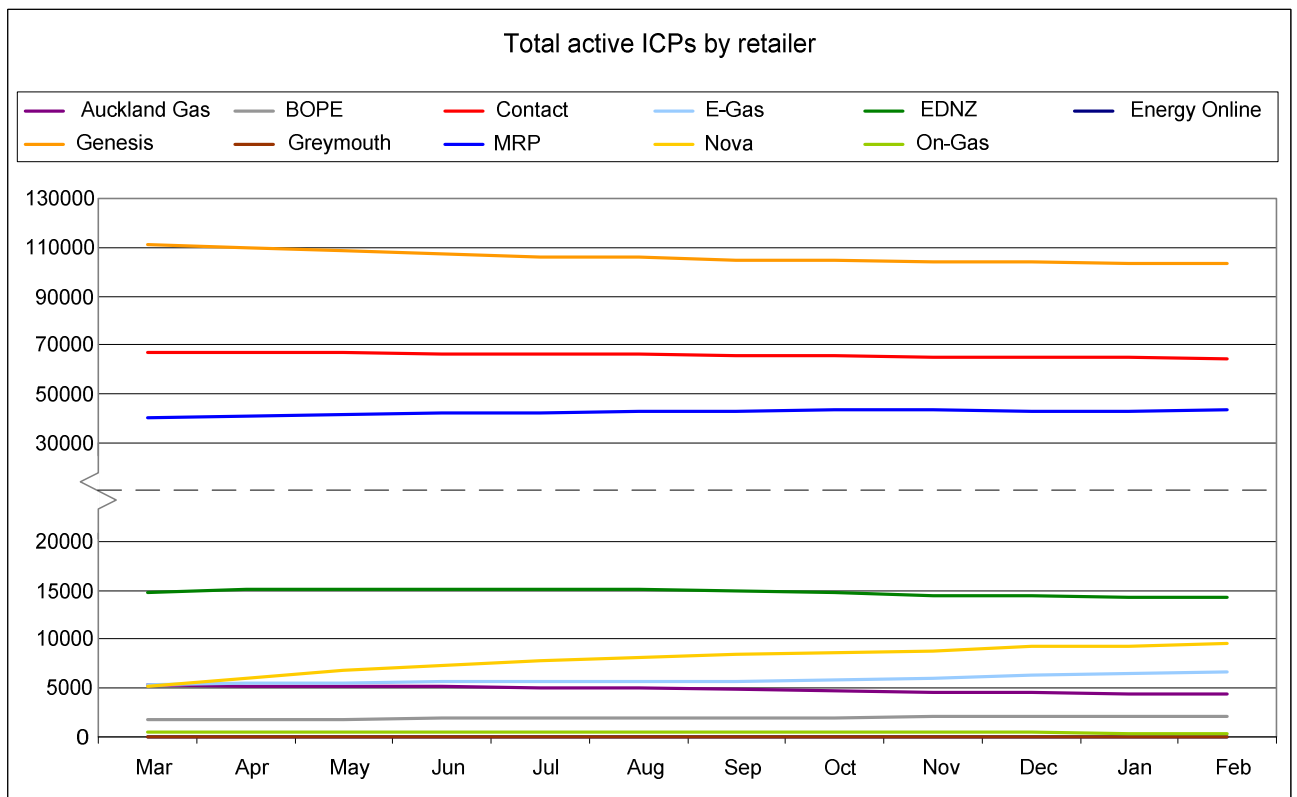
## Market shares – February 2010

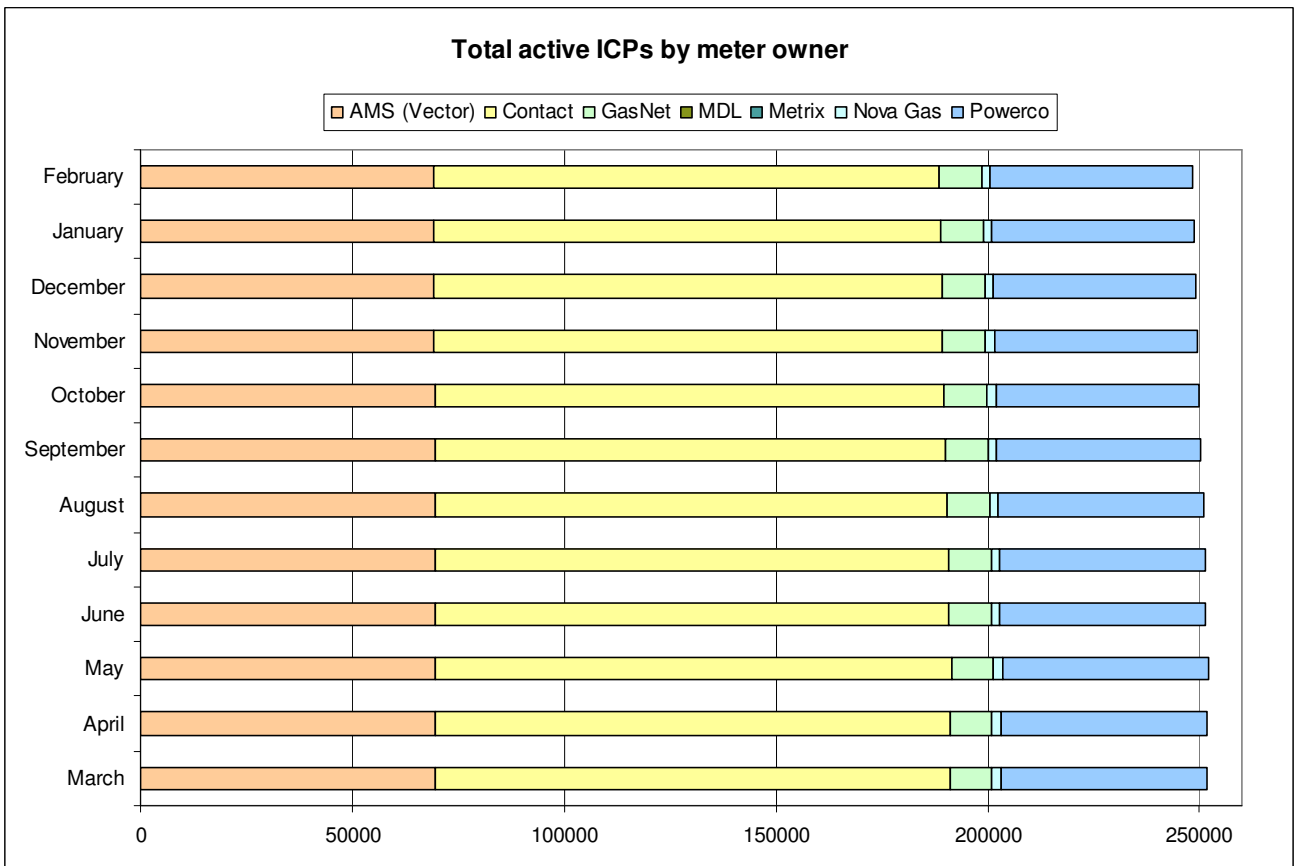
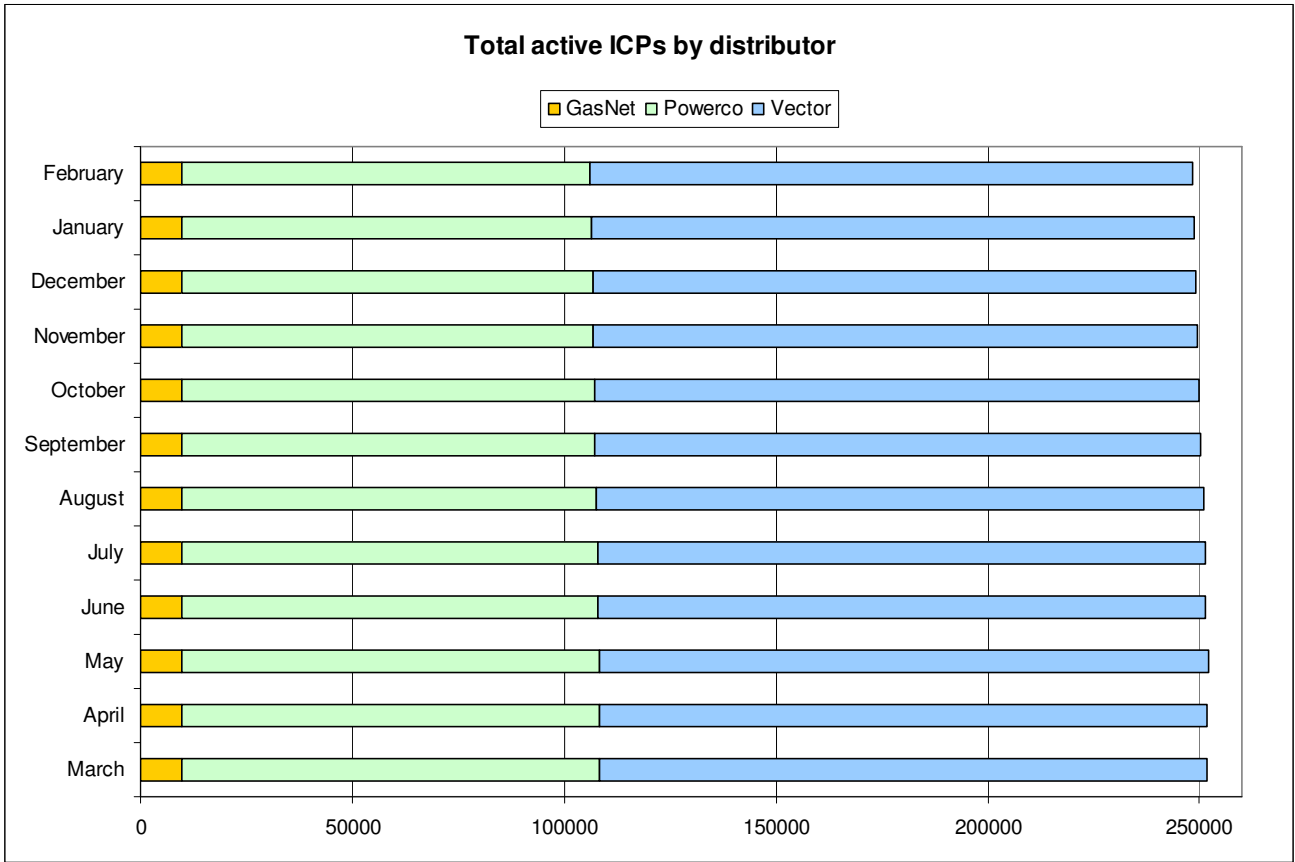
The following charts show the distribution of active-contracted ICPs by retailer, distribution company and meter owner respectively.





## Market shares – historical





## **Active ICPs by gas gate and responsible retailer – February 2010**

The following table shows the distribution of active ICPs by gas gate, and the distribution by retailer at each gas gate.

The responsible retailer codes are as follows:

AGCL—Auckland Gas Company

BOPE—Bay of Plenty Energy

CTCT—Contact Energy

EGAS—E-Gas 2000

EGLT—E-Gas Ltd

EDNZ—Energy Direct NZ (Wanganui Gas)

GENG—Genesis Energy

GEND—Genesis Energy

GEOL—Energy Online

GMTH—Greymouth Gas

MEEN—Mighty River Power

GNVG—Nova Gas

GNGC—OnGas (Vector)

Gas Gate	AGCL	BOPE	CTCT	EDNZ	EGAS	EGLT	GEND	GENG	GEOL	GMTH	GNGC	GNVG	MEEN	Grand Total
ALF15501											1			<b>1</b>
ASH34301			82	55		8		39					13	<b>197</b>
BAL08201			1											<b>1</b>
BAL09626			1											<b>1</b>
BEL24510			1670	15	205	417		16495	1		10	1098	1481	<b>21392</b>
BMC17901	158		392	2	12	48	1	257			4	25	743	<b>1642</b>
BRO36301											1			<b>1</b>
CAM17201	1		52			40		1373				1	173	<b>1640</b>
DAN05001			81		7	12		8			1	2		<b>111</b>
DRU15101	1		15		1	3		2			3	2	2	<b>29</b>
DRU15102	1					1		7			4	1	2	<b>16</b>
EGC30701			1											<b>1</b>
EGC30702		2	1			1		3						<b>7</b>
ELM12301			51	38		4		237			3	1		<b>334</b>
FLD03001			680	412	6	48		454			2	7	80	<b>1689</b>
FLH21901			2	3				1						<b>6</b>
FOX22101			230	13	7	8	1	17	3		1	13	21	<b>314</b>
GIS07810			802	227	1	145	3	2115			5	5		<b>3303</b>
GLB03401											1			<b>1</b>
HAR11801								1			4			<b>5</b>
HEN74101	935		6927	9	99	206	1	4283		1	19	72	7589	<b>20141</b>
HPS02993							1							<b>1</b>
HRU16101						1	1	1			1			<b>4</b>

Gas Gate	AGCL	BOPE	CTCT	EDNZ	EGAS	EGLT	GEND	GENG	GEOL	GMTH	GNGC	GNVG	MEEN	Grand Total
HST05210			3275	311	71	275	1	279	24		7	48		<b>4291</b>
HTK08301								15					5	<b>20</b>
HTL16601						8	1	95			3		2	<b>109</b>
HTV11301	5	2	976		2	438	1	21447			51	114	2462	<b>25498</b>
HUN15301	1		1								2			<b>4</b>
HWA20801		19	423	338		65		1887			1	10		<b>2743</b>
IGW11901		11	70	117		8		342				3		<b>551</b>
KAP12901			2					2						<b>4</b>
KAW04405		133	8	1		6		115					1	<b>264</b>
KAW04410											1			<b>1</b>
KAW04411											1			<b>1</b>
KIG16801			4			1							1	<b>6</b>
KIH19101	1		34			36		1186			2	1	49	<b>1309</b>
KIN02601								4			2		1	<b>7</b>
KIN04310											1			<b>1</b>
KIW34201										1				<b>1</b>
KIW34202								1			1			<b>2</b>
KKI23701			1									1		<b>2</b>
KPA12401		1	4	6				53						<b>64</b>
KRG24101			1	2		1								<b>4</b>
KTK23901											1			<b>1</b>
KUK22401			3			4		18						<b>25</b>
KUR33601											1			<b>1</b>

Gas Gate	AGCL	BOPE	CTCT	EDNZ	EGAS	EGLT	GEND	GENG	GEOL	GMTH	GNGC	GNVG	MEEN	Grand Total
LAB20201			12	70		4		31				1		<b>118</b>
LNB24301			86	53		2		109			4	6	15	<b>275</b>
LVN24401			2194	127	43	86		249	19		5	53	117	<b>2893</b>
MGK05401										1				<b>1</b>
MMU08001	1	405	82		3	125	2	2964		2	3	14	330	<b>3931</b>
MNA23402			37	36	1	3		167				1		<b>245</b>
MRV16301			1											<b>1</b>
MRV16302			30			21		566				1	50	<b>668</b>
MSD01801			1											<b>1</b>
MSD01802											1			<b>1</b>
MTG17301						1		36					1	<b>38</b>
MTN23801			61	265		8		131			1	3		<b>469</b>
MTP20601								5						<b>5</b>
MUT19001											1			<b>1</b>
NGW14501			4			2		132					7	<b>145</b>
NPL12101		248	1205	2272	28	204	1	6545			9	41		<b>10553</b>
NPS00530			1											<b>1</b>
OAK18601								1						<b>1</b>
OKA13201			11	7		1		40						<b>59</b>
OKS32801						1							1	<b>2</b>
OKU16701		5	35	52				112				1		<b>205</b>
OPK13001		1	28	13				122						<b>164</b>
OPO32001		46	4			4	1	53					1	<b>109</b>

Gas Gate	AGCL	BOPE	CTCT	EDNZ	EGAS	EGLT	GEND	GENG	GEOL	GMTH	GNGC	GNVG	MEEN	Grand Total
ORD24701			1	1		1								<b>3</b>
OTA22601			46	3		19		307				2	3	<b>380</b>
OTB00301			1											<b>1</b>
OTO14101			3			14		154						<b>171</b>
PAH23201						1		6						<b>7</b>
PAP06603	8		13		1		1	7					38	<b>68</b>
PAP06610	387		4371	9	65	158	1	491		1	52	70	3406	<b>9011</b>
PAU20101			478	47	4	181		2313			2	2	85	<b>3112</b>
PGH15901			1					1						<b>2</b>
PGU13101								14						<b>14</b>
PHT04901			48			9		29			1			<b>87</b>
PIR31101								41					5	<b>46</b>
PLN24201			6233	2792	39	292		4188	5		20	411	574	<b>14554</b>
PPA33201								8					1	<b>9</b>
PTA20901			18	27		3		138			1	1		<b>188</b>
PTR32601		1	10			20		290			1		13	<b>335</b>
PUK04201	9		69	1	5	9		12				5	55	<b>165</b>
RAG33401											1			<b>1</b>
RAM15201			1								2			<b>3</b>
ROT08101		256	242	1	2	183	1	2616			11	35	434	<b>3781</b>
RPR30801			2			1		19					1	<b>23</b>
STR10201		7	101	103		23		650				3		<b>887</b>
TAC31001											1			<b>1</b>

Gas Gate	AGCL	BOPE	CTCT	EDNZ	EGAS	EGLT	GEND	GENG	GEOL	GMTH	GNGC	GNVG	MEEN	Grand Total
TAT16401										1				<b>1</b>
TAU07001		107	175	2	1	152		1343			1	1	168	<b>1950</b>
TCC00201			1											<b>1</b>
THO22701			2			2		11						<b>15</b>
TIR33501			1											<b>1</b>
TIR33502		1				12		57					5	<b>75</b>
TKN17001			1			7		157			1	1		<b>167</b>
TKP05101												1		<b>1</b>
TKR19701		4	32		1	50		886			1	1	39	<b>1014</b>
TKS17401			1			2	1	14		1	2			<b>21</b>
TPK33301		26	5			23		526			1		22	<b>603</b>
TRC02003			1											<b>1</b>
TRG07701		565	101	3		196	1	2924			5	12	253	<b>4060</b>
TTK30601		2						4						<b>6</b>
TUK06501	1		6					1			2	1	1	<b>12</b>
TWA35610			9037	53	218	575	2	8479	2		30	6934	2271	<b>27601</b>
WAG21501			441	6379		67		2156		1	4	63		<b>9111</b>
WAK22801			172	14		73		1173					7	<b>1439</b>
WEL18301			1			2		18					1	<b>22</b>
WHG07501			61	2	1	101		902			5	2	91	<b>1165</b>
WHK32101		241	8			40		165			3		7	<b>464</b>
WKE19201											1			<b>1</b>
WRK18901			19			11		160			2		51	<b>243</b>

Gas Gate	AGCL	BOPE	CTCT	EDNZ	EGAS	EGLT	GEND	GENG	GEOL	GMTH	GNGC	GNVG	MEEN	Grand Total
WST03610	2833		22116	20	388	659	2	4296		13	77	325	21449	<b>52178</b>
WTA16501			1			1		34		1		3	1	<b>41</b>
WTG06910			531	7	69	124	1	4412	1		4	169	471	<b>5789</b>
WTK33901	13		215			10	1	1276				6	697	<b>2218</b>
WTK33902	31		109		3	7		164				1	193	<b>508</b>
WTR12001		9	131	313		14		667			8	7		<b>1149</b>
WTT20301											1			<b>1</b>
WVY23601			2				1	4						<b>7</b>
<b>Grand Total</b>	<b>4386</b>	<b>2092</b>	<b>64390</b>	<b>14221</b>	<b>1283</b>	<b>5288</b>	<b>27</b>	<b>103113</b>	<b>55</b>	<b>23</b>	<b>398</b>	<b>9581</b>	<b>43489</b>	<b>248346</b>