

Gas Registry statistics – October 2010

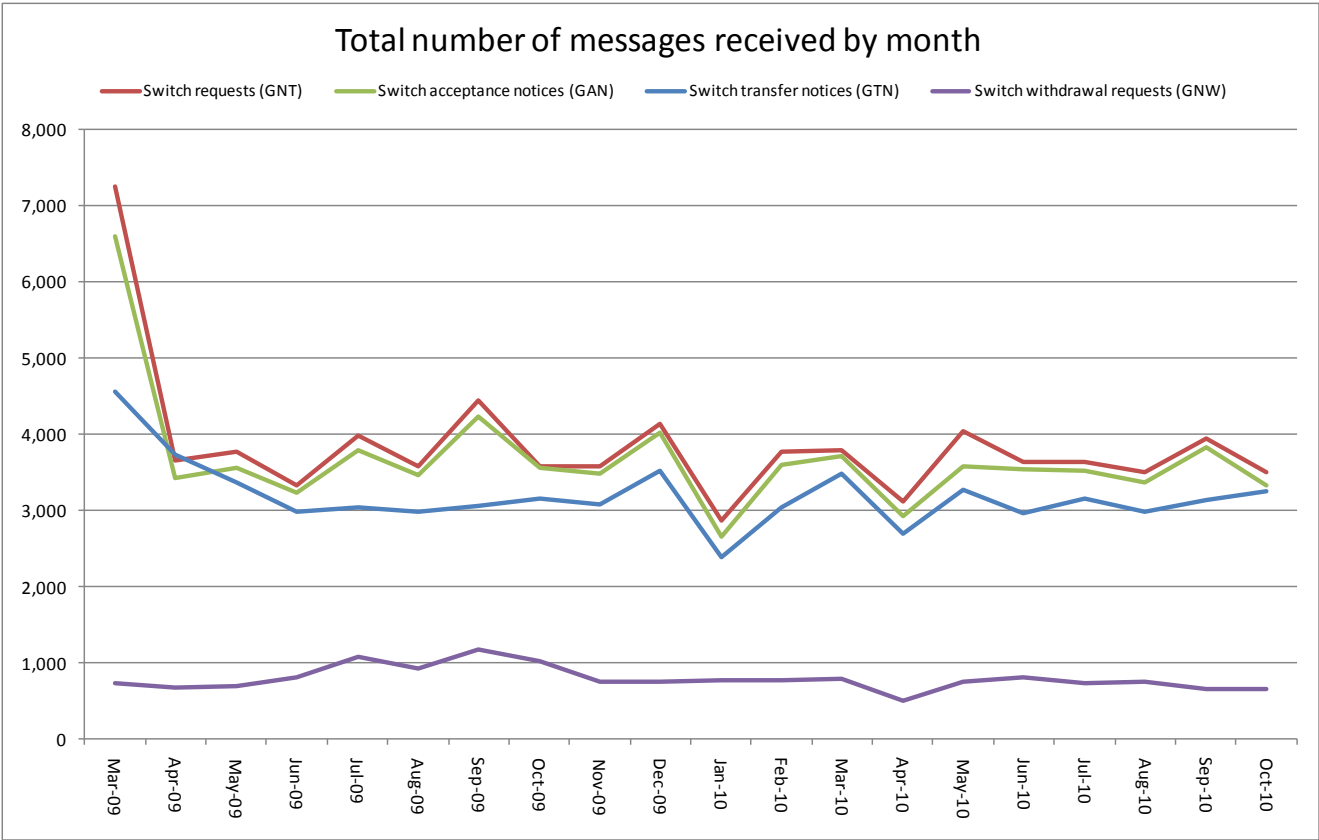
The following report provides statistics and charts illustrating gas registry usage, switching volumes and breakdowns of retailer, distributor and meter owner market shares. The information is provided in accordance with version 1.2 of the Determinations by the Industry Body (Gas Industry Co) under the Gas (Switching Arrangements) Rules 2008, dated 20 February 2009.

Summary registry statistics – October 2010

ICP enquiries processed in month (Online)	24,547
ICP enquiries processed in month (Offline)	4,462,690
Total ICP enquiries processed in month	4,487,237
ICPs added to the Registry in month	434
ICPs changed in month	1,990
ICPs decommissioned in month	12
Valid standard switch requests (GNT-S) received in month	2,225
Valid move switch requests (GNT-SM) received in month	1,271
Valid switch requests (GNT) received in month	3,496
Valid switch acceptance notices (GAN) received in month	3,331
Valid switch transfer notices (GTN) received in month	3,257
Valid switch withdrawal requests (GNW) received in month	650
Valid switch withdrawal acceptances (GAW-A) received in month	574
Valid switch withdrawal rejections (GAW-R) received in month	30
Valid switch reading renegotiation requests (GNC) received in month	31
Valid switch reading renegotiation acceptances (GAC-A) received in month	31
Valid switch reading renegotiation rejections (GAC-R) received in month	1

Note: A switch transfer notice (GTN) is the last stage required to complete the switching process. This statistic indicates the number of switches completed in the month.

Switching activity – historical



ICPs by status – October 2010

The meaning of the ICP status codes are as follows:

ACTC—Active contracted (gas is able to flow and the customer has a contract with a retailer)

ACTV—Active vacant (gas is able to flow and the premises is vacant)

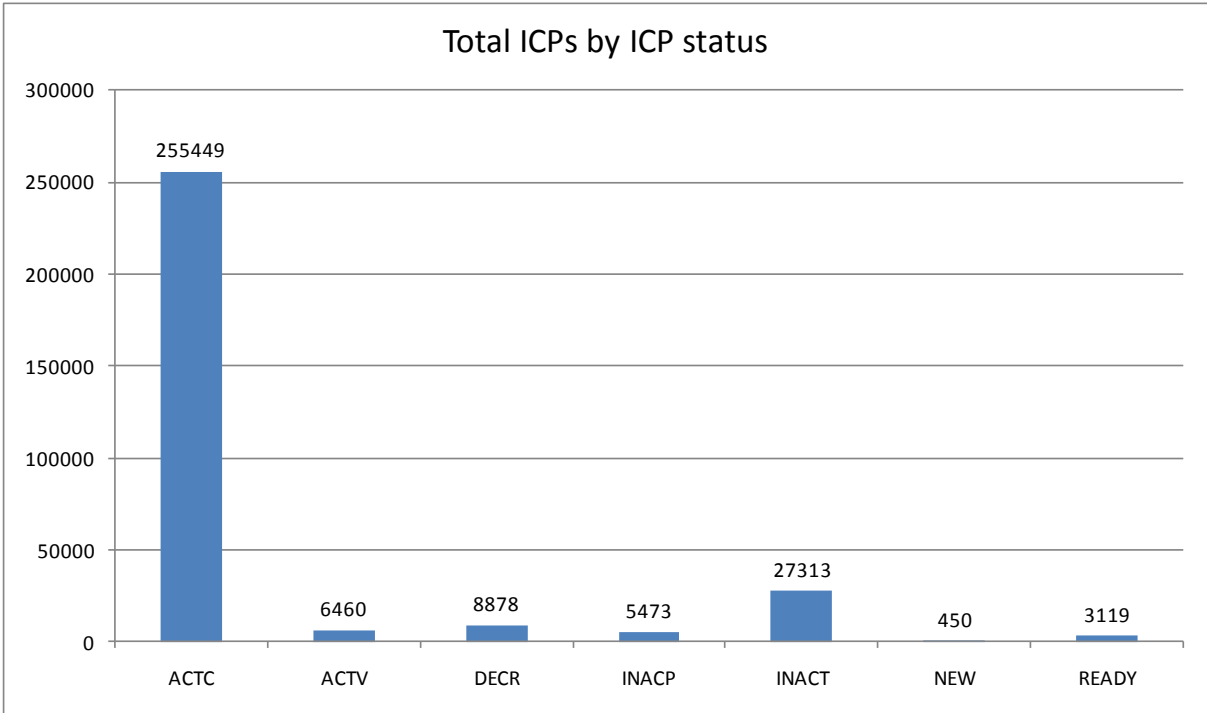
DECR—Decommissioned

INACP—Inactive permanent (gas unable to flow due to a permanent disconnection)

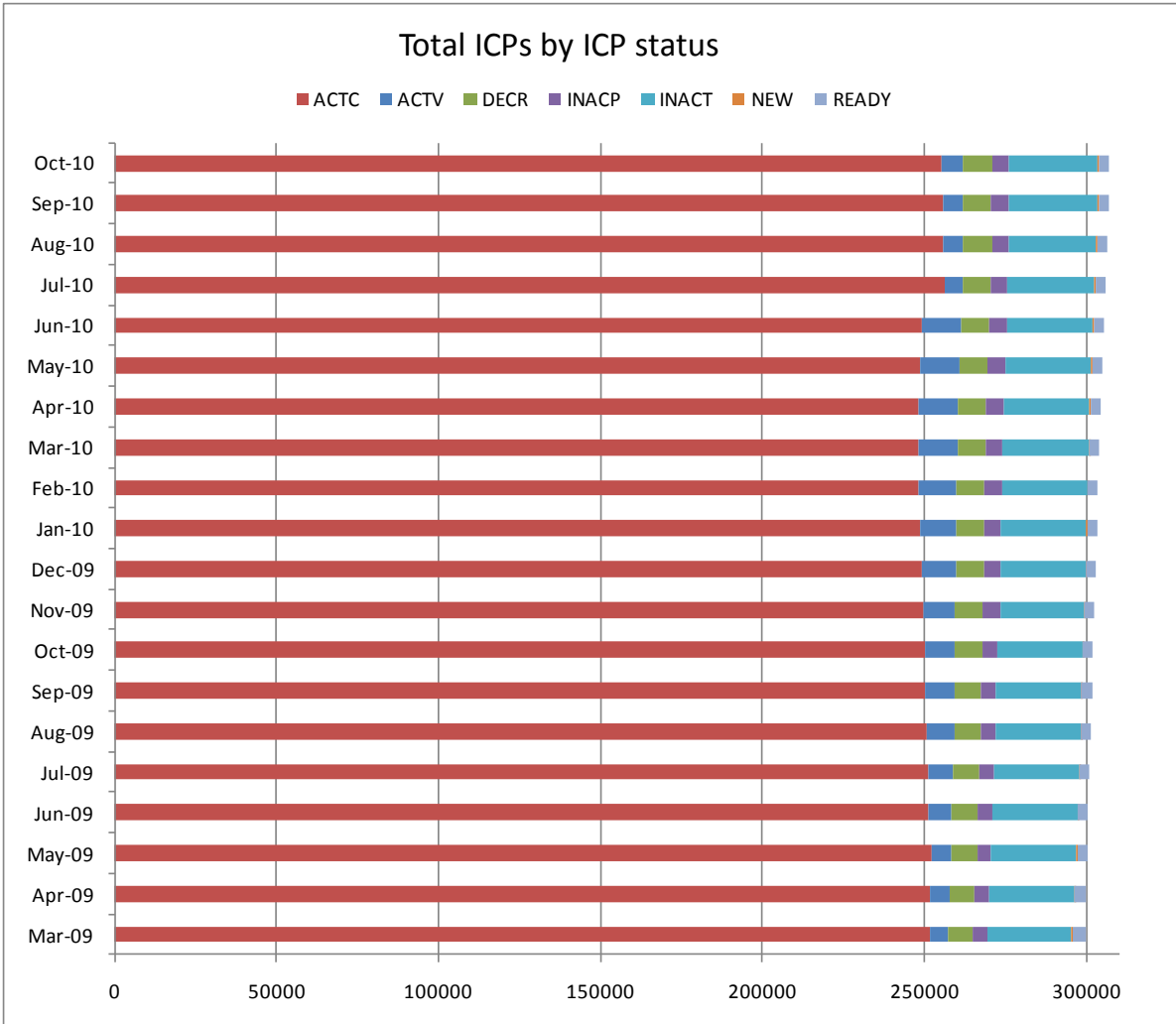
INACT—Gas unable to flow due to a temporary disconnection

NEW—Newly created ICP, gas not yet able to flow

READY—New ICP, gas able to flow, awaiting uplift by retailer

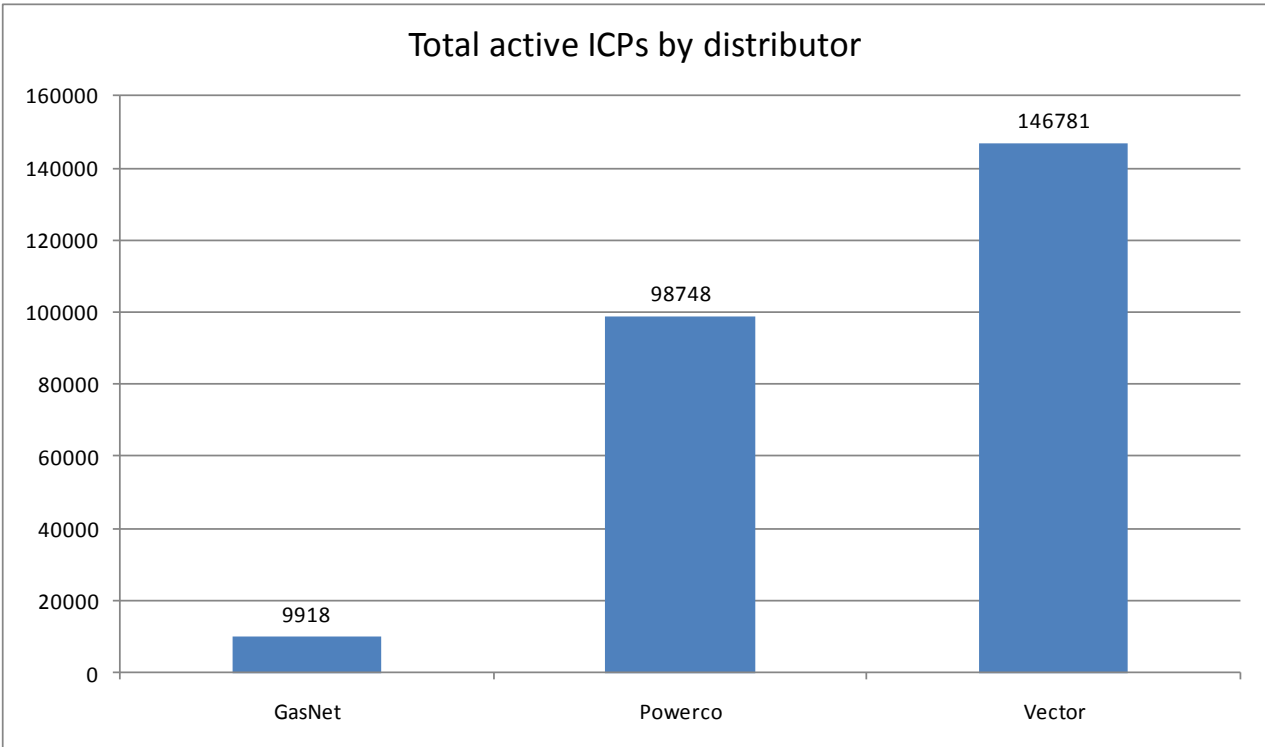
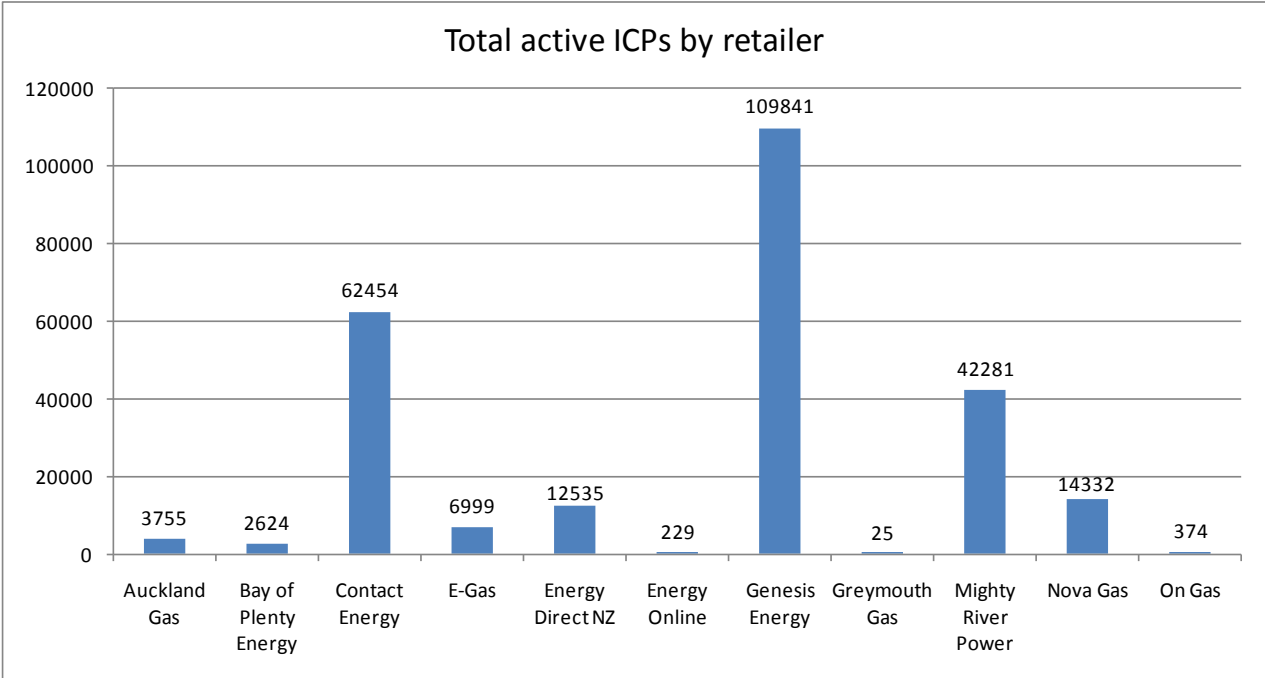


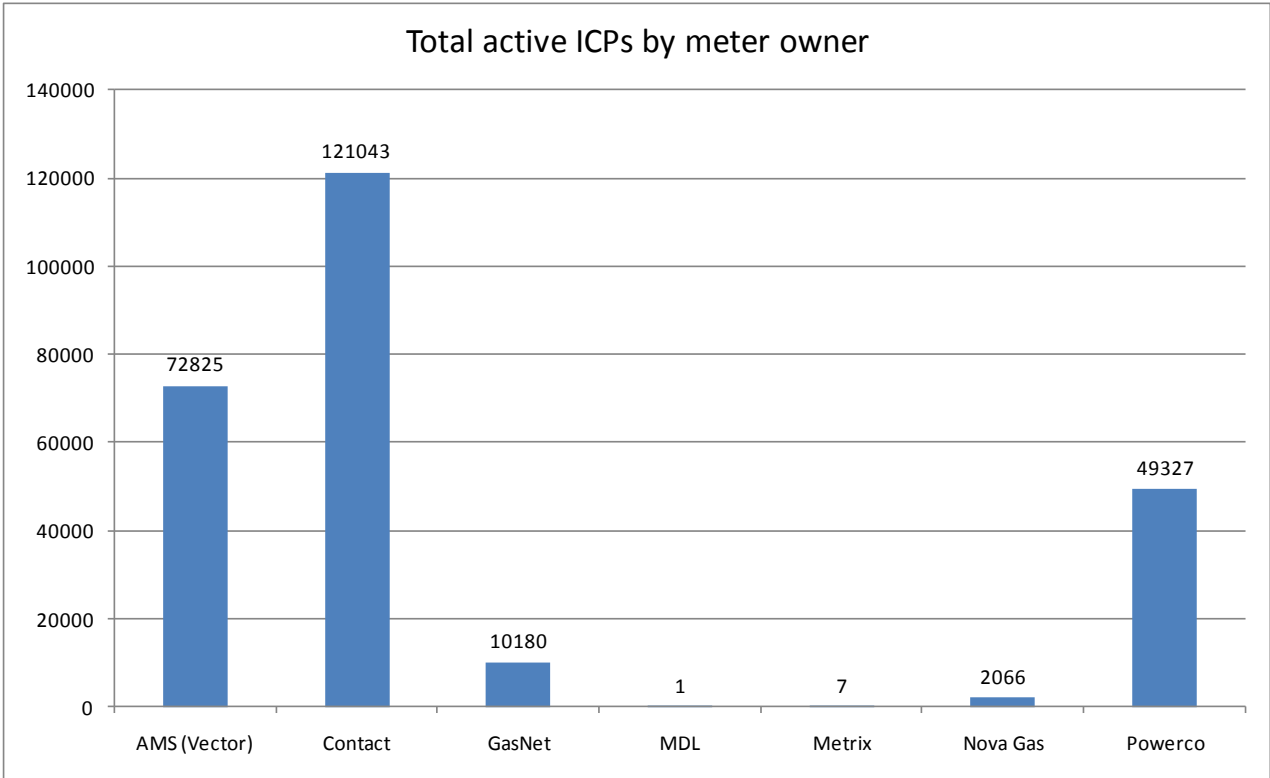
ICPs by status – historical



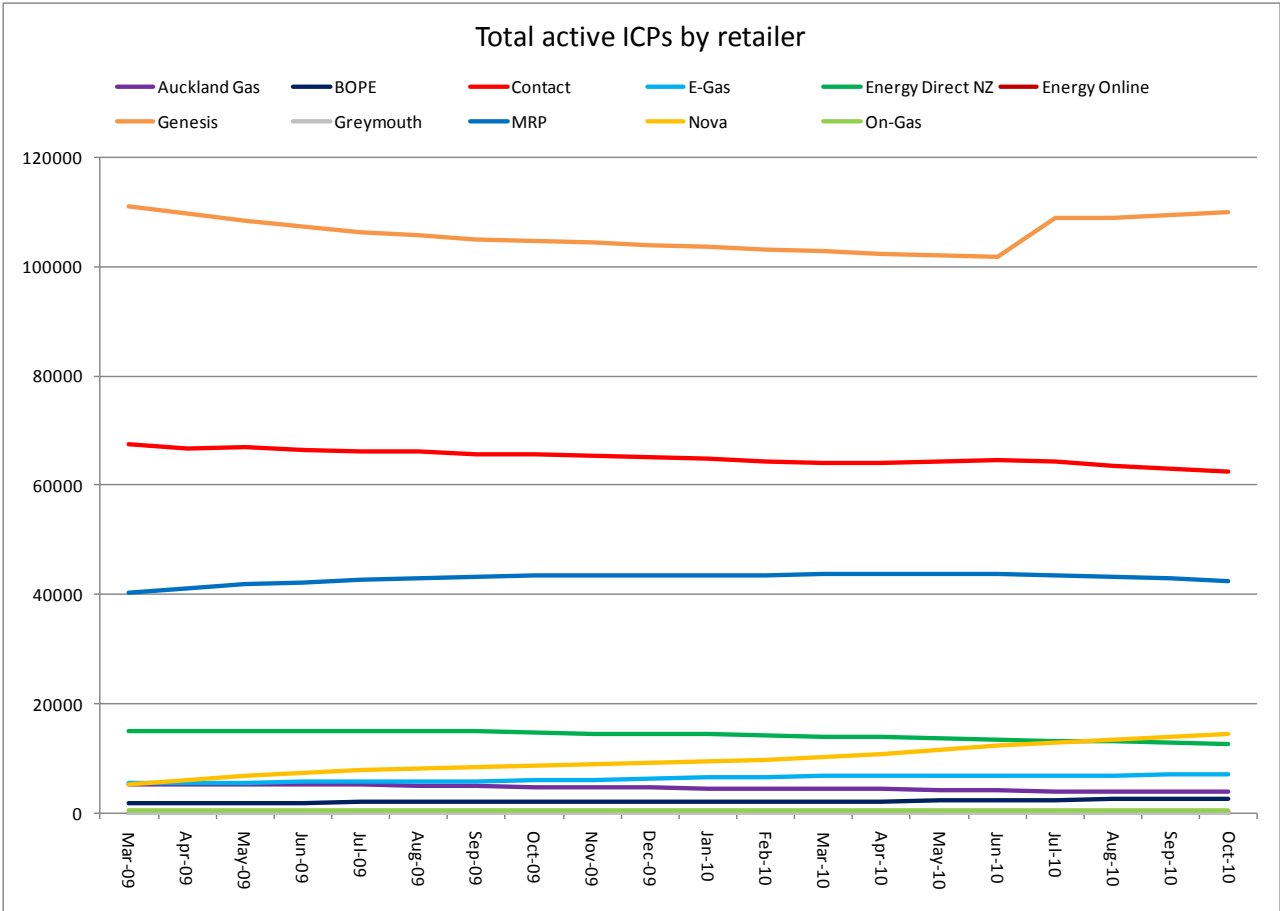
Market shares – October 2010

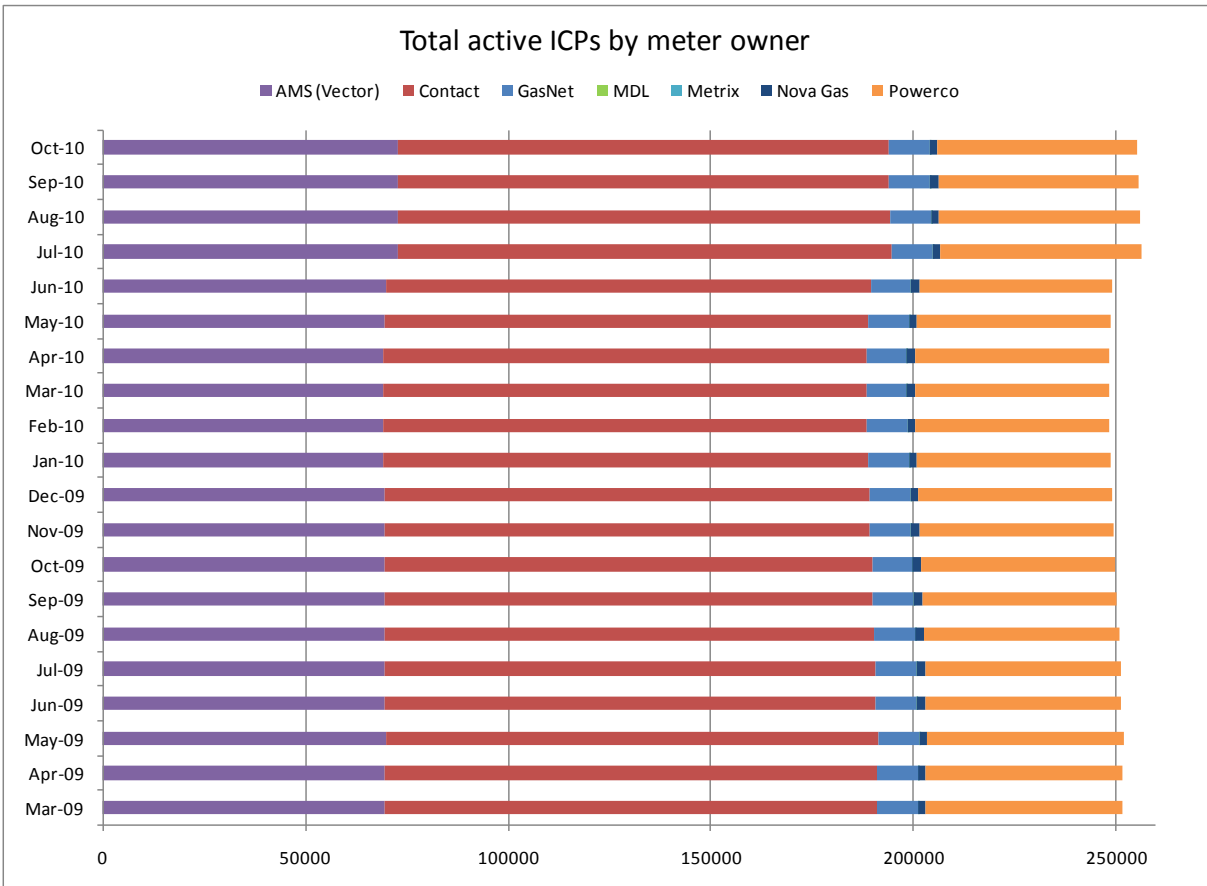
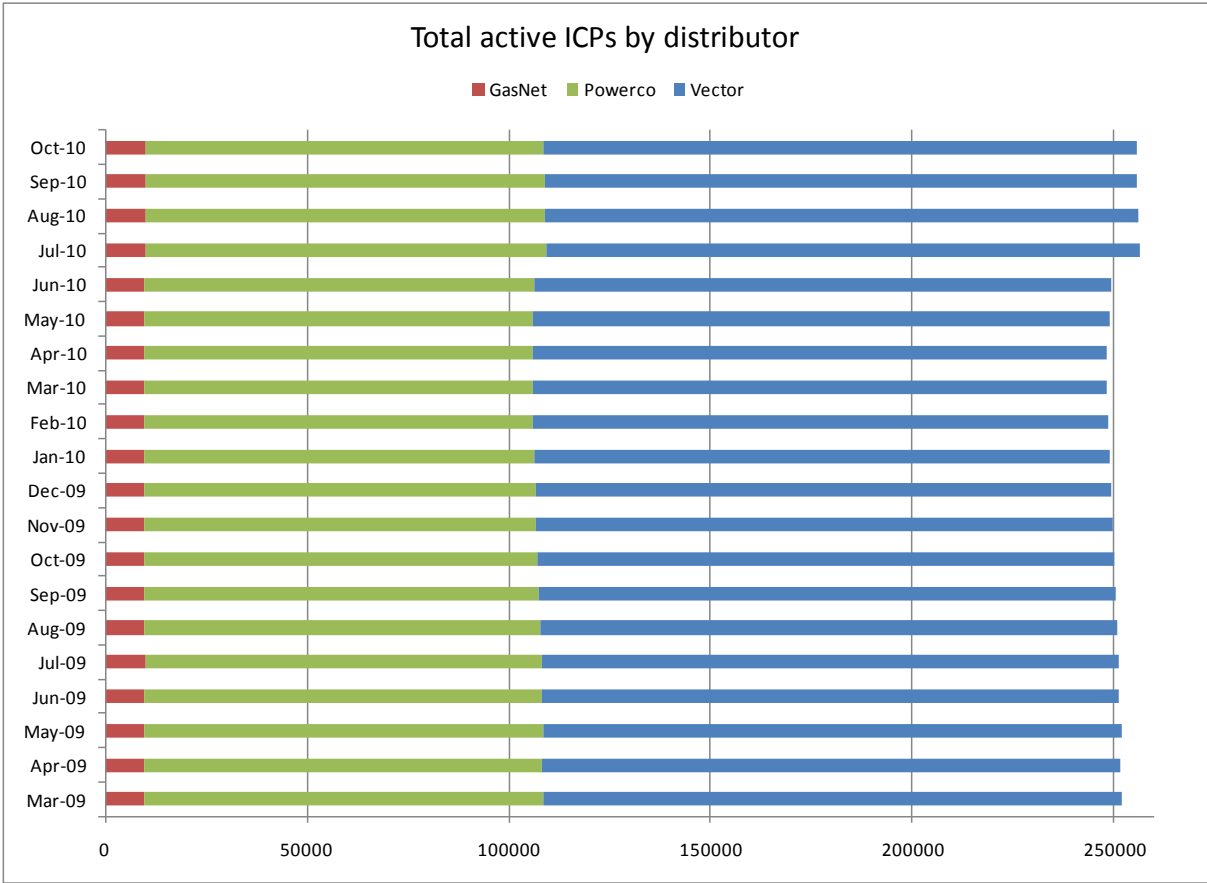
The following charts show the distribution of active-contracted ICPs by retailer, distribution company and meter owner respectively.





Market shares – historical





Active ICPs by gas gate and responsible retailer – October 2010

The following table shows the distribution of active ICPs by gas gate, and the distribution by retailer at each gas gate.

The responsible retailer codes are as follows:

AGCL—Auckland Gas Company

BOPE—Bay of Plenty Energy

CTCT—Contact Energy

EGAS—E-Gas 2000

EGLT—E-Gas Ltd

EDNZ—Energy Direct NZ (Wanganui Gas)

GENG—Genesis Energy

GEND—Genesis Energy

GEOL—Energy Online

GMTH—Greymouth Gas

MEEN—Mighty River Power

GNVG—Nova Gas

GNGC—OnGas (Vector)

Gas Gate	AGCL	BOPE	CTCT	EDNZ	EGAS	EGLT	GEND	GENG	GEOL	GMTH	GNGC	GNVG	MEEN	Total
ALF15501											1			1
ASH34301			62	33		9		47				49	8	208
BAL08201										1				1
BAL09626										1				1
BEL24510			1689	29	275	458		17356	3		11	1144	1505	22470
BMC17901	135		439	2	11	47		321			3	41	699	1698
BRO36301											1			1
CAM17201	1		60			44		1479				1	174	1759
DAN05001			79		6	15		9			1	2		112
DRU15101	1		14		1	3		2			2	4	3	30
DRU15102	1		4			1		7			4	3	4	24
EGC30701			1											1
EGC30702		2	1			1		3						7
ELM12301		5	50	38		4		239			3	1		340
FLD03001			467	242	9	51	1	436			1	470	39	1716
FLH21901			1	3				2						6
FOX22101			225	12	6	7	1	19	5		1	14	16	306
GIS07810			854	230	1	157	3	2092			3	6		3346
GLB03401											1			1
HAR11801								1			4			5
HEN74101	809		7067	4	95	242	1	5232	3	1	18	159	7130	20761
HPS02993							1							1
HRU16101						1	1	1				1		4

Gas Gate	AGCL	BOPE	CTCT	EDNZ	EGAS	EGLT	GEND	GENG	GEOL	GMTH	GNGC	GNVG	MEEN	Total
HST05210			3134	303	104	289	2	347	134		6	50		4369
HTK08301			2					14					3	19
HTL16601			3			7	1	103			3		4	121
HTV11301	3	9	1416		3	400	3	22724			51	112	2273	26994
HUN15301	1			1							2			4
HWA20801		57	451	337		64		1884			1	10		2804
IGW11901		22	84	108		9		329				3		555
KAP12901			2					2						4
KAW04405		130	10	1		6		110						257
KAW04410											1			1
KAW04411											1			1
KIG16801			4			1							1	6
KIH19101	1		45			39	1	1228			1	1	46	1362
KIN02601								4			2		1	7
KIN04310											1			1
KIW34201										1				1
KIW34202								1			1			2
KKI23701			2									1		3
KPA12401		3	3	6				48						60
KRG24101			1	1		1						1		4
KTK23901											1			1
KUK22401			6			4		18						28
KUR33601											1			1

Gas Gate	AGCL	BOPE	CTCT	EDNZ	EGAS	EGLT	GEND	GENG	GEOL	GMTH	GNGC	GNVG	MEEN	Total
LAB20201			8	64		5		38				1	1	117
LCF20010			1											1
LNB24301			52	32		3		94			4	89	11	285
LVN24401			2109	124	53	92		292	68		5	54	99	2896
MGK05401										1				1
MMU08001	1	404	112		3	131	4	3115		1	3	13	340	4127
MNA23402			39	35	1	3		171						249
MRV16301			1											1
MRV16302			31			23		557				2	76	689
MSD01801			1											1
MSD01802											1			1
MTG17301			1					38					1	40
MTN23801			61	251		9		146			2	3		472
MTP20601								6						6
MUT19001											1			1
NGW14501			11			2		136					6	155
NPL12101		666	1152	2133	31	197	1	6552			6	47	1	10786
NPS00530			1											1
OAK18601								1						1
OKA13201		2	10	6		1		41						60
OKS32801						1							1	2
OKU16701		8	33	50		1		125				1		218
OPK13001		3	30	14				129						176

Gas Gate	AGCL	BOPE	CTCT	EDNZ	EGAS	EGLT	GEND	GENG	GEOL	GMTH	GNGC	GNVG	MEEN	Total
OPO32001		50	4			3	1	54						112
ORD24701			1	1		1								3
OTA22601			48	3		26		304				2	6	389
OTB00301			1											1
OTO14101			4			14		160						178
PAH23101								10						10
PAH23201						1		1						2
PAP06603	3		27		1		1	17				2	55	106
PAP06610	337		4330	6	61	170	3	672		1	53	114	3326	9073
PAU20101			499	47	11	187		2397			2	2	93	3238
PGH15901			1											1
PGU13101								14						14
PHT04901			43			12		33			1			89
PIR31101								44					5	49
PLN24201			4215	1614	49	277		3967	5		21	4353	345	14846
PPA33201			1					7						8
PTA20901		4	18	25		2		137			1	1		188
PTR32601		3	15			20		291			1		11	341
PUK04201	7		63		4	10	1	14				13	57	169
RAG33401												1		1
RAM15201			1								2			3
ROT08101		259	271		1	181	1	2700			12	41	425	3891
RPR30801			2			1		21					1	25

Gas Gate	AGCL	BOPE	CTCT	EDNZ	EGAS	EGLT	GEND	GENG	GEOL	GMTH	GNGC	GNVG	MEEN	Total
STR10201		14	96	100		25		664				3		902
TAC31001											1			1
TAT16401										1				1
TAU07001		103	233	2	1	157		1355			1	2	171	2025
TCC00201			1											1
THO22701			2			2		11						15
TIR33501			1											1
TIR33502		2	1			12		55					7	77
TKN17001			1			8		147			1	1		158
TKP05101												1		1
TKR19701		5	41		1	49		887			1	2	44	1030
TKS17401			1			1		15		1	2			20
TPK33301		27	8			26	1	535					23	620
TRC02003			1											1
TRG07701		564	120	3		220		3056			5	12	265	4245
TTK30601		2						4						6
TUK06501	1		6					1			2	1	1	12
TWA35610			8627	58	258	608	4	9444	7		30	6567	2319	27922
WAG21501			458	6280		78		2427		2	2	75		9322
WAK22801			185	15		76		1193					10	1479
WEL18301			1			2		19				1	1	24
WHG07501			72	2	1	100		934			5	2	86	1202
WHK32101		244	7			39		153			3		8	454

Gas Gate	AGCL	BOPE	CTCT	EDNZ	EGAS	EGLT	GEND	GENG	GEOL	GMTH	GNGC	GNVG	MEEN	Total
WKE19201											1			1
WRK18901			21			10		153			2	5	66	257
WST03610	2415		22151	7	381	735	6	5707	2	13	71	623	21098	53209
WTA16501						1		38		1		3	2	45
WTG06910			538	10	91	122	1	4539	2		3	188	520	6014
WTK33901	11		262			12	1	1302				12	708	2308
WTK33902	28		122		3	8		187				6	186	540
WTR12001		36	123	303		13		628			2	16		1121
WTT20301											1			1
WVY23601			2				1	4						7
Total	3755	2624	62454	12535	1462	5537	41	109800	229	25	374	14332	42281	255449