

# Gas Registry statistics for April 2009

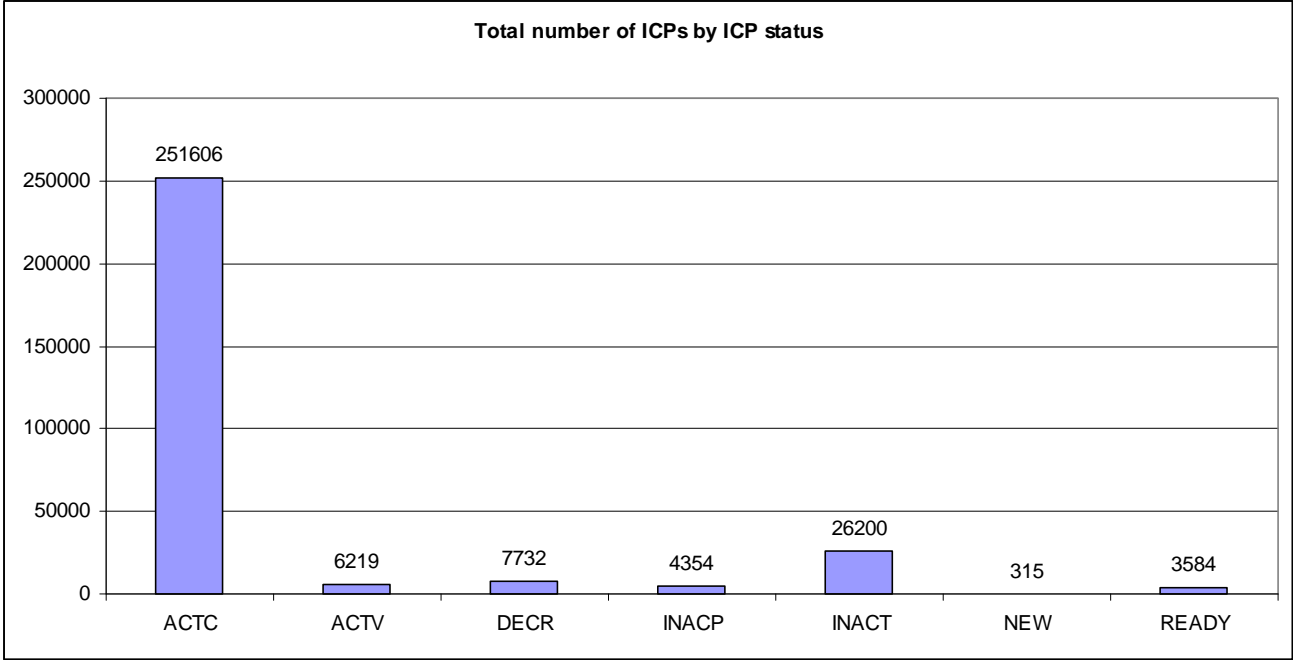
---

## Summary Statistics

ICP enquiries processed in month (Online)	32,162
ICP enquiries processed in month (Offline)	3,122,702
<b>Total ICP enquiries processed in month</b>	<b>3,154,864</b>
ICPs added to the Registry in month	261
ICPs changed in month	2,102
ICPs decommissioned in month	11
Valid standard switch requests (GNT-S) received in month	2,198
Valid move switch requests (GNT-SM) received in month	1,460
<b>Valid switch requests (GNT) received in month</b>	<b>3,658</b>
Valid switch acceptance notices (GAN) received in month	3,415
<b>Valid switch transfer notices (GTN) received in month</b>	<b>3,734</b>
Valid switch withdrawal requests (GNW) received in month	676
Valid switch withdrawal acceptances (GAW-A) received in month	582
Valid switch withdrawal rejections (GAW-R) received in month	58
Valid switch reading renegotiation requests (GNC) received in month	10
Valid switch reading renegotiation acceptances (GAC-A) received in month	5
Valid switch reading renegotiation rejections (GAC-R) received in month	2

Note: A switch transfer notice (GTN) is the last stage required to complete the switching process. This statistic indicates the number of switches completed in the month.

# ICPs by status



The meaning of the ICP status codes are as follows:

ACTC—Active contracted (gas is able to flow and the customer has a contract with a retailer)

ACTV—Active vacant (gas is able to flow and the premises is vacant)

DECR—Decommissioned

INACP—Inactive permanent (gas unable to flow due to a permanent disconnection)

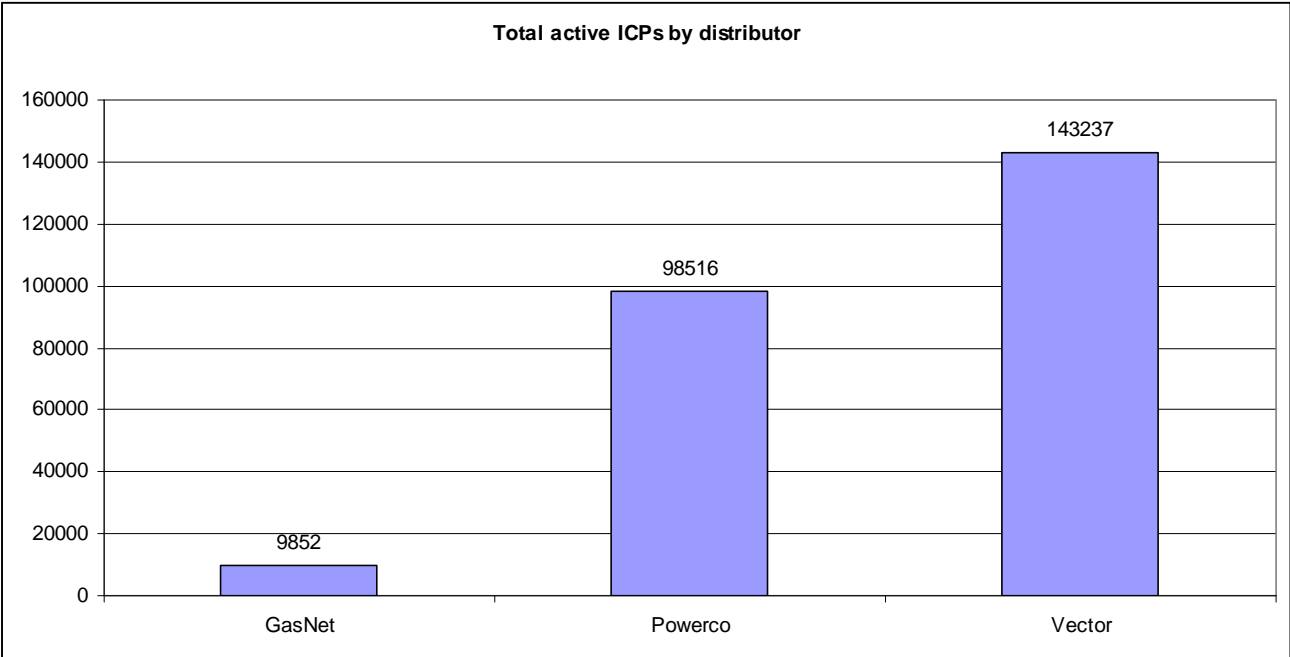
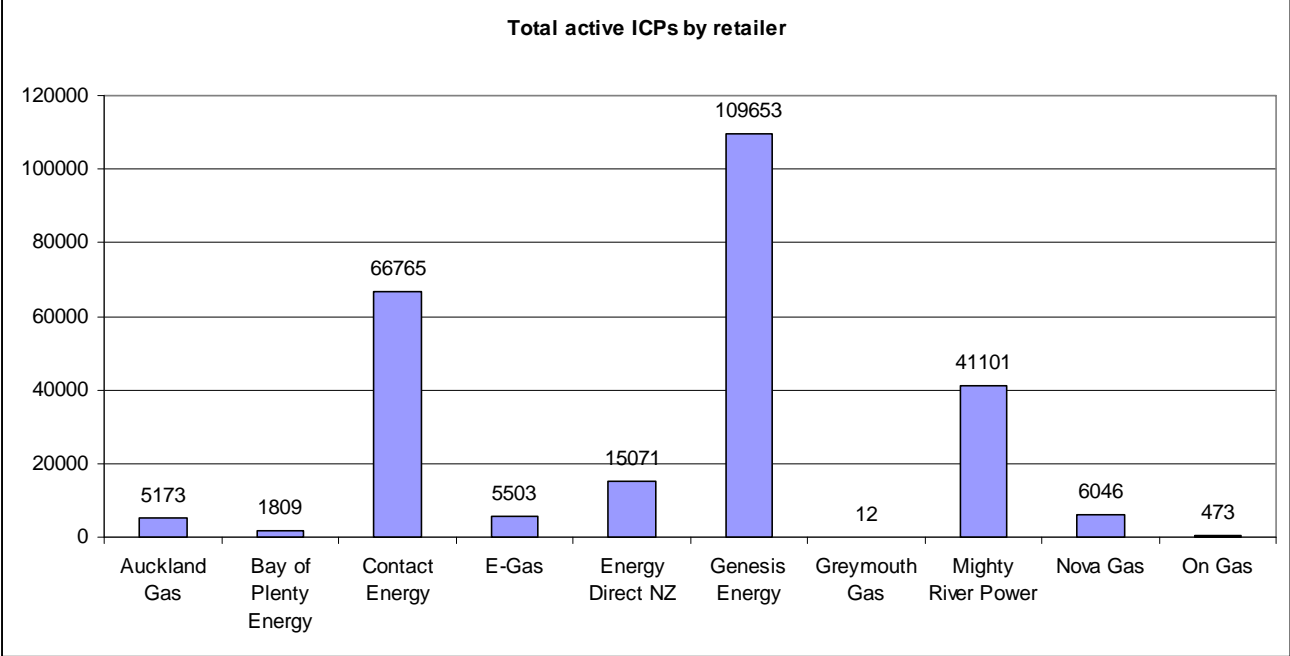
INACT—Gas unable to flow due to a temporary disconnection

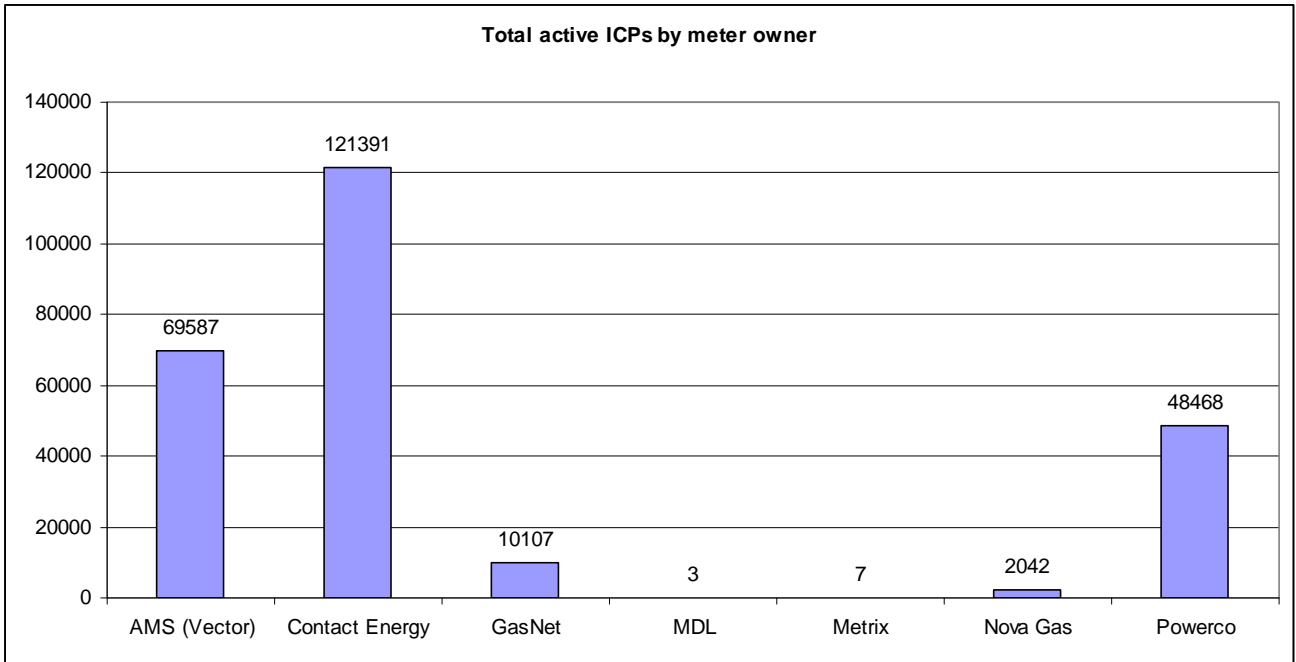
NEW—Newly created ICP, gas not yet able to flow

READY—New ICP, gas able to flow, awaiting uplift by retailer

# Market shares

The following charts show the distribution of active, contracted ICPs by retailer, distribution company and meter owner respectively.





### Active ICPs by gas gate and responsible retailer

The following table shows the distribution of active ICPs by gas gate, and the distribution by retailer at each gas gate.

The responsible retailer codes are as follows:

AGCL—Auckland Gas Company

BOPE—Bay of Plenty Energy

CTCT—Contact Energy

EGAS—E-Gas 2000

EGLT—E-Gas Ltd

EDNZ—Energy Direct NZ (Wanganui Gas)

GENG—Genesis Energy

GEND—Genesis Energy

GMTH—Greymouth Gas

MEEN—Mighty River Power

GNVG—Nova Gas

GNGC—OnGas (Vector)

Gas Gate	AGCL	BOPE	CTCT	EDNZ	EGAS	EGLT	GEND	GENG	GMTH	GNGC	GNVG	MEEN	Grand Total
ALF15501										1			<b>1</b>
ASH34301			99	60	1	6		32				2	<b>200</b>
BEL24510	8		1608	11	105	324		17662		12	699	1454	<b>21883</b>
BMC17901	185		373	2	14	39	1	265		6	11	716	<b>1612</b>
BRO36301										1			<b>1</b>
CAM17201	1		37			35		1394		1		172	<b>1640</b>
DAN05001			91		7	11		7		1	2		<b>119</b>
DRU15101	1		15		1	2		2		5	1	1	<b>28</b>
DRU15102			1			1		6		5		1	<b>14</b>
EGC30701			1										<b>1</b>
EGC30702		2	1			1		3					<b>7</b>
ELM12301			38	38		4		261		2	1		<b>344</b>
FLD03001			763	440	6	46		468		2	4	10	<b>1739</b>
FLH21901				5				1					<b>6</b>
FOX22101			266	12	9	5	1	15		1	13		<b>322</b>
GIS07810			596	190		132	1	2398		7	5		<b>3329</b>
GLB03401										1			<b>1</b>
HAR11801										4			<b>4</b>
HEN74101	1171		6964	8	108	125	1	4475	1	25	38	7108	<b>20024</b>
HPS02993							1						<b>1</b>
HRU16101						1	1	1		1			<b>4</b>
HST05210			3365	328	37	273		263		9	38		<b>4313</b>
HTK08301								17				3	<b>20</b>
HTL16601						7	1	91		3		2	<b>104</b>
HTV11301	6	1	614	1	1	398	1	23162		58	41	2024	<b>26307</b>
HUN15301	1		1							2			<b>4</b>
HWA20801			391	358	2	68	1	2032			3		<b>2855</b>
IGW11901			66	125		8		362		4			<b>565</b>
KAP12901			2					2					<b>4</b>
KAW04405		132	5	1		5		123				1	<b>267</b>
KAW04410										1			<b>1</b>
KAW04411										1			<b>1</b>

KIG16801			4			1					1	<b>6</b>	
KIH19101	1		25			34		1237		2		44	<b>1343</b>
KIN02601								4		2		1	<b>7</b>
KIN04310										1			<b>1</b>
KIW34201						1							<b>1</b>
KIW34202								1		1			<b>2</b>
KKI23701											1		<b>1</b>
KPA12401			4	7		1		53					<b>65</b>
KRG24101			1	2		1							<b>4</b>
KTK23901										1			<b>1</b>
KUK22401			3			4		19					<b>26</b>
KUR33601										1			<b>1</b>
LAB20201			11	72		4		31					<b>118</b>
LNB24301			105	57		2	3	114		1	6	1	<b>289</b>
LVN24401			2408	141	33	79		238		5	50	1	<b>2955</b>
MGK05401			1							1			<b>2</b>
MMU08001	1	413	65		1	116	2	3071	2	5	9	315	<b>4000</b>
MNA23402			31	38	1	3		183			1		<b>257</b>
MRV16301			1					2					<b>3</b>
MRV16302			22			10		583		2	1	45	<b>663</b>
MSD01801			1										<b>1</b>
MSD01802										1			<b>1</b>
MTG17301						1		39				1	<b>41</b>
MTN23801			59	283		8		113		1	3		<b>467</b>
MTP20601								6					<b>6</b>
MUT19001										1			<b>1</b>
NGW14501			3			1		145				4	<b>153</b>
NPL12101			1025	2377	18	212		7111		36	12		<b>10791</b>
OAK18601								1					<b>1</b>
OKA13201			7	8		1		41					<b>57</b>
OKS32801						1						1	<b>2</b>
OKU16701		1	22	49				135		1			<b>208</b>
OPK13001			25	10				141					<b>176</b>
OPO32001		47	2			4		56				1	<b>110</b>

ORD24701			1	1		1						<b>3</b>
OTA22601			32	2		15		335		1		<b>385</b>
OTO14101			2			12		163				<b>177</b>
PAH23201						1		6				<b>7</b>
PAP06603	2		8			1	1	5			17	<b>34</b>
PAP06610	452		4502	9	77	124	3	462		54	44	<b>9107</b>
PAU20101			402	35	3	118		2536		3	1	<b>3164</b>
PGH15901			1					1				<b>2</b>
PGU13101								15				<b>15</b>
PHT04901			51			9	1	29				<b>90</b>
PIR31101								43			3	<b>46</b>
PLN24201	4		6987	3081	44	256		4247		22	74	<b>14841</b>
PPA33201								8				<b>8</b>
PTA20901			15	26		2		153			2	<b>198</b>
PTR32601			5			16		305		1		<b>339</b>
PUK04201	15		72	1	6	5		4			3	<b>160</b>
RAG33401										1		<b>1</b>
RAM15201			1							2		<b>3</b>
ROT08101		274	165	2		153	1	2869		13	9	<b>3876</b>
RPR30801			2					22				<b>25</b>
STR10201			82	103		26		708				<b>919</b>
TAC31001							1					<b>1</b>
TAT16401			1									<b>1</b>
TAU07001		101	88		1	126		1475		2		<b>1971</b>
THO22701			3			2		10				<b>15</b>
TIR33501			1									<b>1</b>
TIR33502						11		57			5	<b>73</b>
TKN17001						5		174		1	1	<b>181</b>
TKP05101											1	<b>1</b>
TKR19701		2	20			39		950		2		<b>1053</b>
TKS17401			1			1	1	15	1	2		<b>21</b>
TPK33301		24	5			19		545		1		<b>615</b>
TRG07701		567	71	3		146	1	3085		5	10	<b>4115</b>
TTK30601		1						4				<b>5</b>

TUK06501	1		6					1		2	1	1	<b>12</b>
TWA35610	5		11143	30	175	536	2	9480		32	4571	2295	<b>28269</b>
WAG21501			367	6800		63		1965		3	62		<b>9260</b>
WAK22801			143	8		66		1238				2	<b>1457</b>
WEL18301			1	1		1		21				2	<b>26</b>
WHG07501			41		1	90		964		6	1	92	<b>1195</b>
WHK32101		244	6			29		168		4		9	<b>460</b>
WKE19201										1			<b>1</b>
WRK18901			8			8		184		2		49	<b>251</b>
WST03610	3267		22542	19	394	424	1	4019	7	80	206	21052	<b>52011</b>
WTA16501						1		36	1	3			<b>41</b>
WTG06910			515	2	33	113	1	4641		5	115	404	<b>5829</b>
WTK33901	12		139			10	1	1424			2	596	<b>2184</b>
WTK33902	40		102		3	4		168			1	170	<b>488</b>
WTR12001			111	325		15		717		10	2		<b>1180</b>
WTT20301										1			<b>1</b>
WVY23601			1				1	5					<b>7</b>
<b>Grand Total</b>	<b>5173</b>	<b>1809</b>	<b>66765</b>	<b>15071</b>	<b>1081</b>	<b>4422</b>	<b>30</b>	<b>109623</b>	<b>12</b>	<b>473</b>	<b>6046</b>	<b>41101</b>	<b>251606</b>