

# Gas Registry Statistics – July 2017

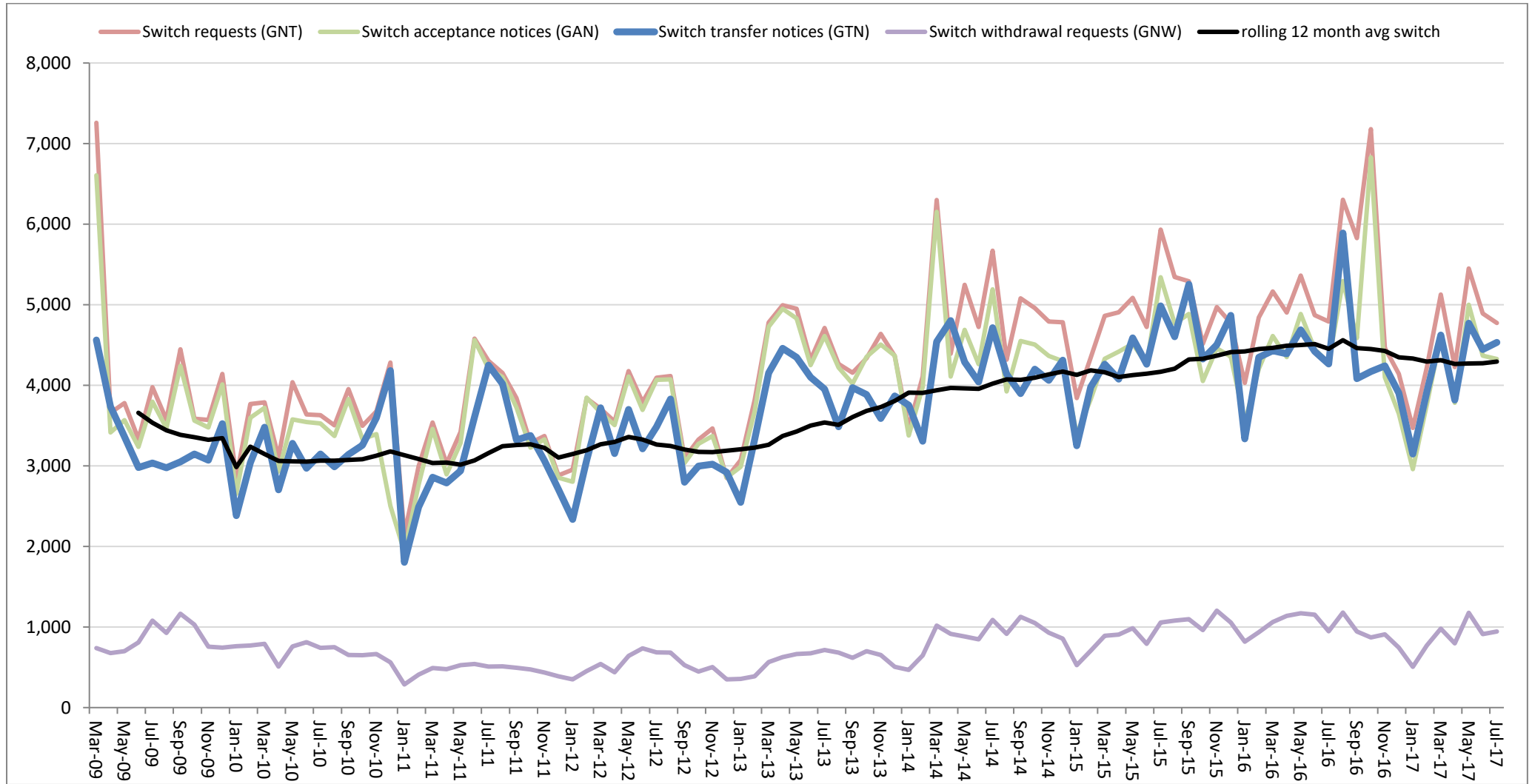
The following report provides statistics and charts illustrating gas registry usage, switching volumes and breakdowns of retailer, distributor and meter owner market shares. The information is provided in accordance with current version of the Determinations by the Industry Body (Gas Industry Co) under the Gas (Switching Arrangements) Rules 2008.

## Summary registry statistics – July 2017

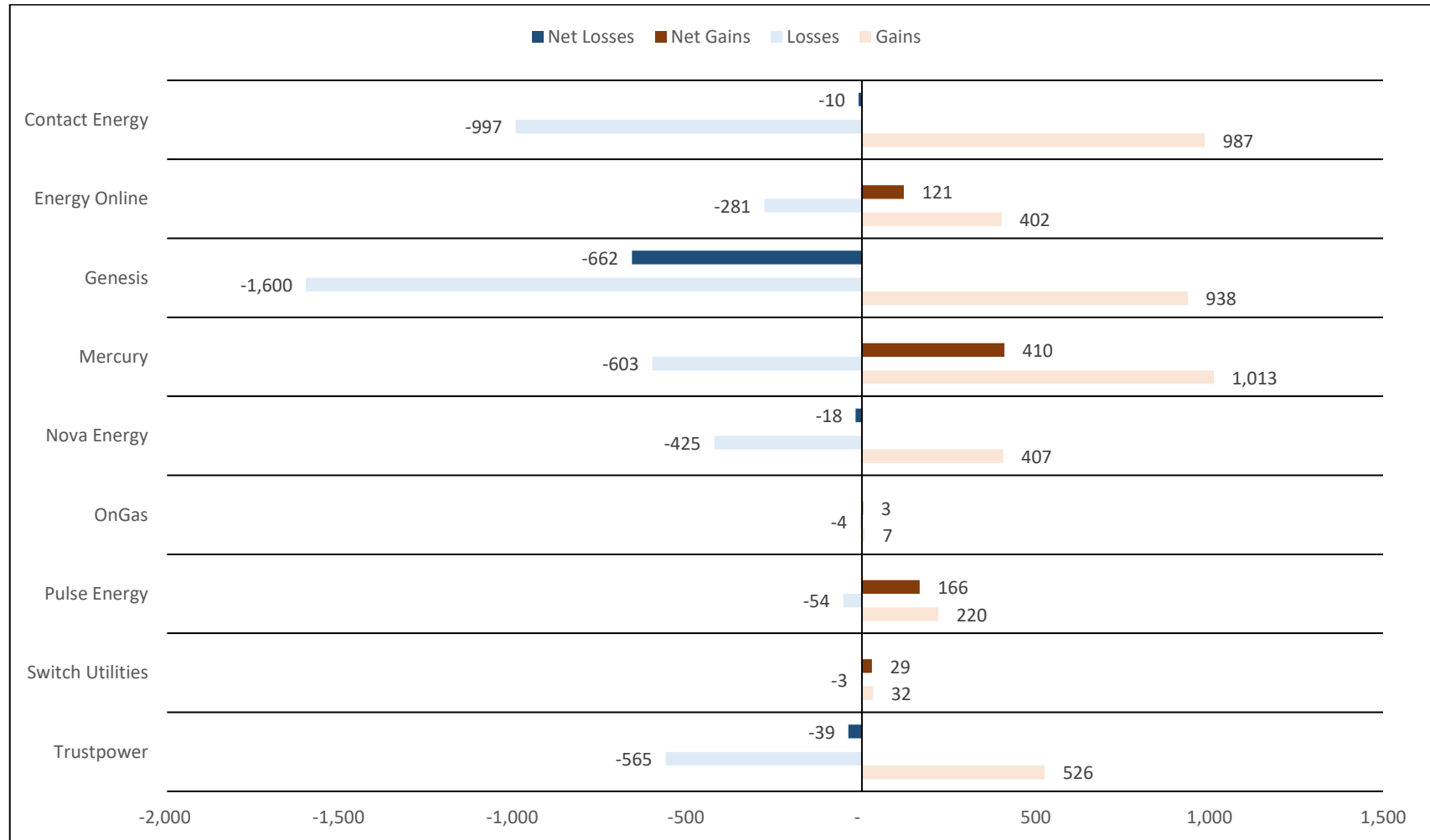
|  |                    |
|--|--------------------|
| ICP enquiries processed in month (Online)                                | 51,707             |
| ICP enquiries processed in month (Offline)                               | 124,069,792        |
| <b>Total ICP enquiries processed in month</b>                            | <b>124,121,499</b> |
| ICPs added to the registry in month                                      | 559                |
| ICPs changed in month  | 2,797              |
| ICPs decommissioned in month   | 61                 |
| Valid standard switch requests (GNT-S) received in month                 | 2,358              |
| Valid move switch requests (GNT-SM) received in month                    | 2,415              |
| <b>Valid switch requests (GNT) received in month</b>                     | <b>4,773</b>       |
| Valid switch acceptance notices (GAN) received in month                  | 4,325              |
| <b>Valid switch transfer notices (GTN) received in month</b>             | <b>4,532</b>       |
| Valid switch withdrawal requests (GNW) received in month                 | 943                |
| Valid switch withdrawal acceptances (GAW-A) received in month            | 903                |
| Valid switch withdrawal rejections (GAW-R) received in month             | 53                 |
| Valid switch reading renegotiation requests (GNC) received in month      | 145                |
| Valid switch reading renegotiation acceptances (GAC-A) received in month | 132                |
| Valid switch reading renegotiation rejections (GAC-R) received in month  | 18                 |

Note: A switch transfer notice (GTN) is the last stage required to complete the switching process. This statistic indicates the number of switches completed in the month.

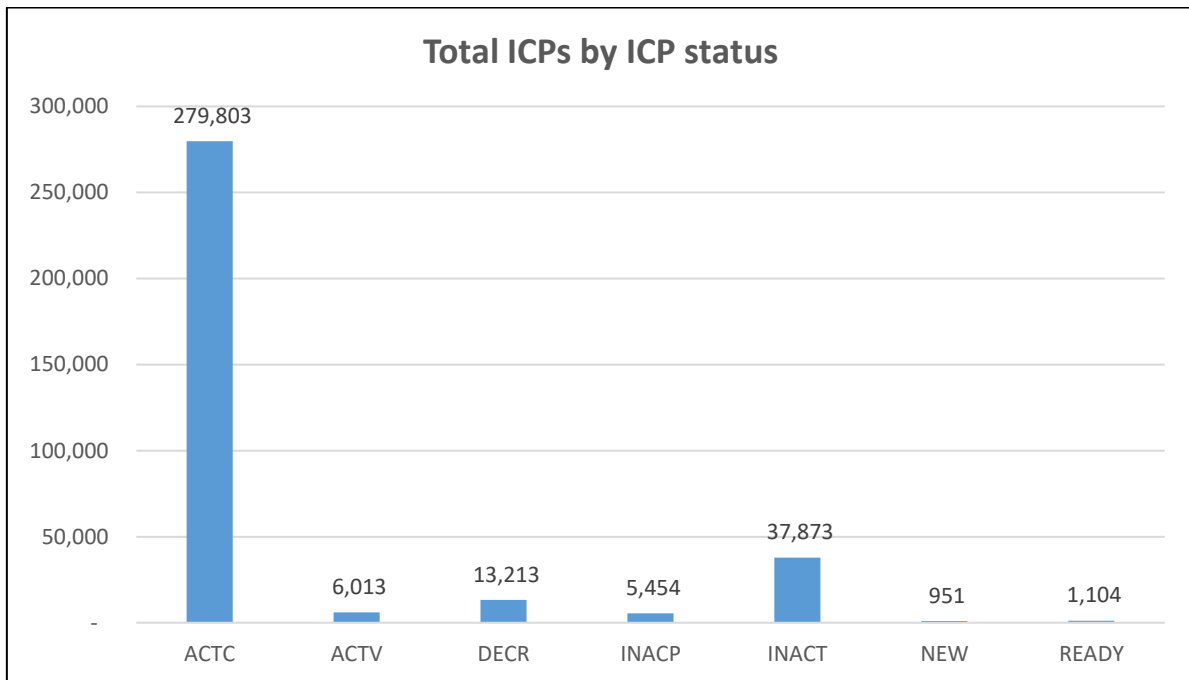
# Switching activity – historical



## Switching gains and losses – July 2017



## ICPs by status – July 2017



Installation control points (ICPs) are the record of customer installations in the gas registry. The meaning of the ICP status codes are as follows:

ACTC—Active contracted (gas is able to flow and the customer has a contract with a retailer)

ACTV—Active vacant (gas is able to flow and the premises is vacant)

DECR—Decommissioned

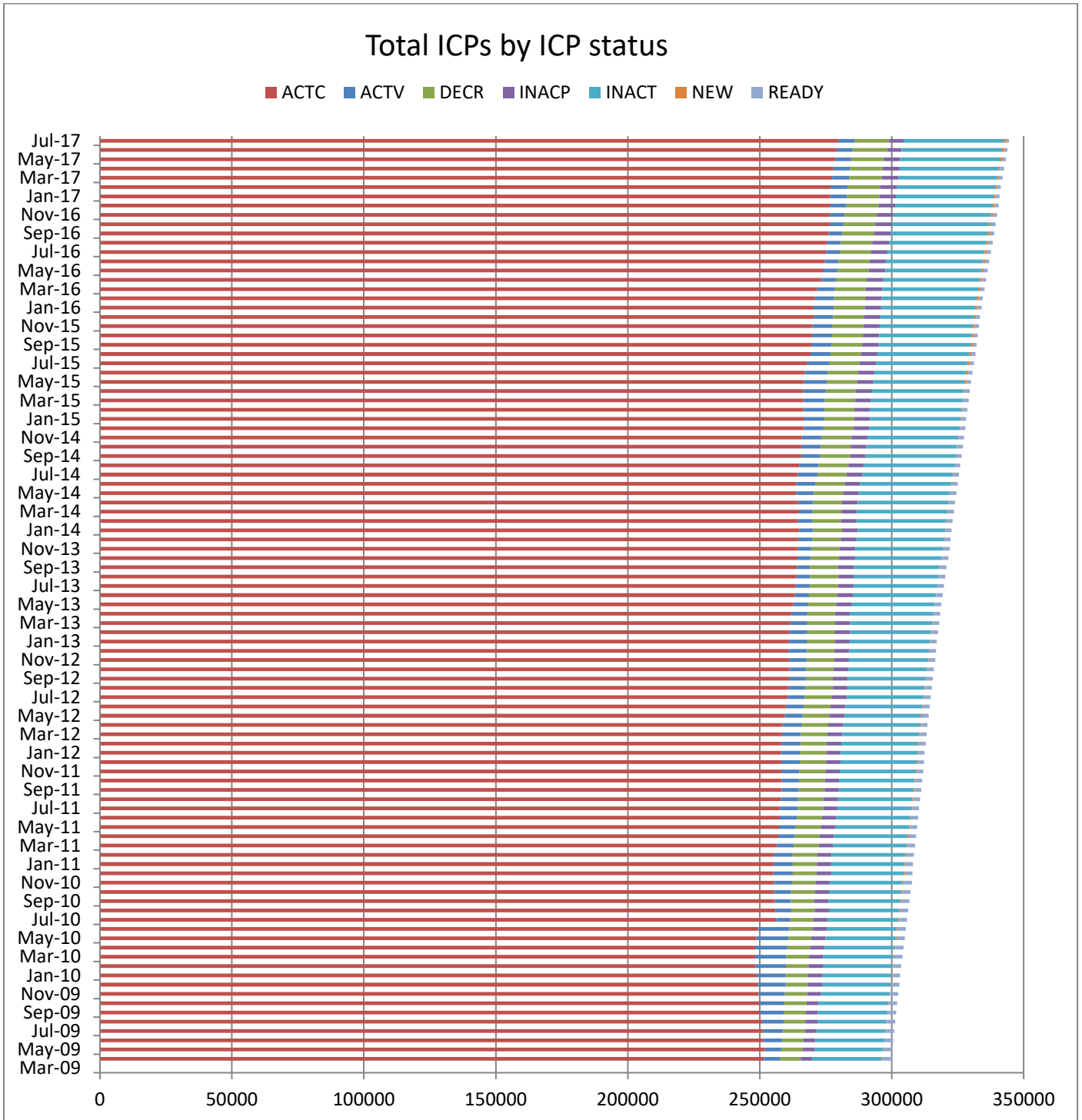
INACP—Inactive permanent (gas unable to flow due to a permanent disconnection)

INACT—Gas unable to flow due to a temporary disconnection

NEW—Newly created ICP, gas not yet able to flow

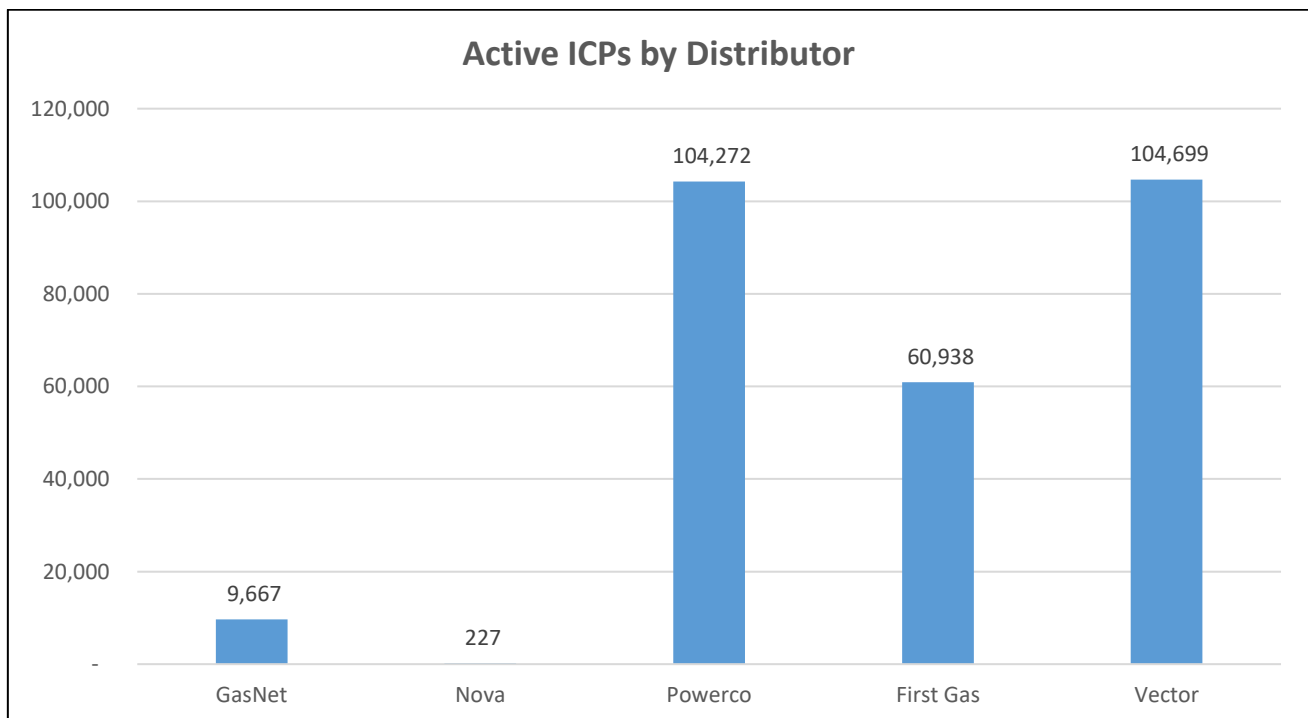
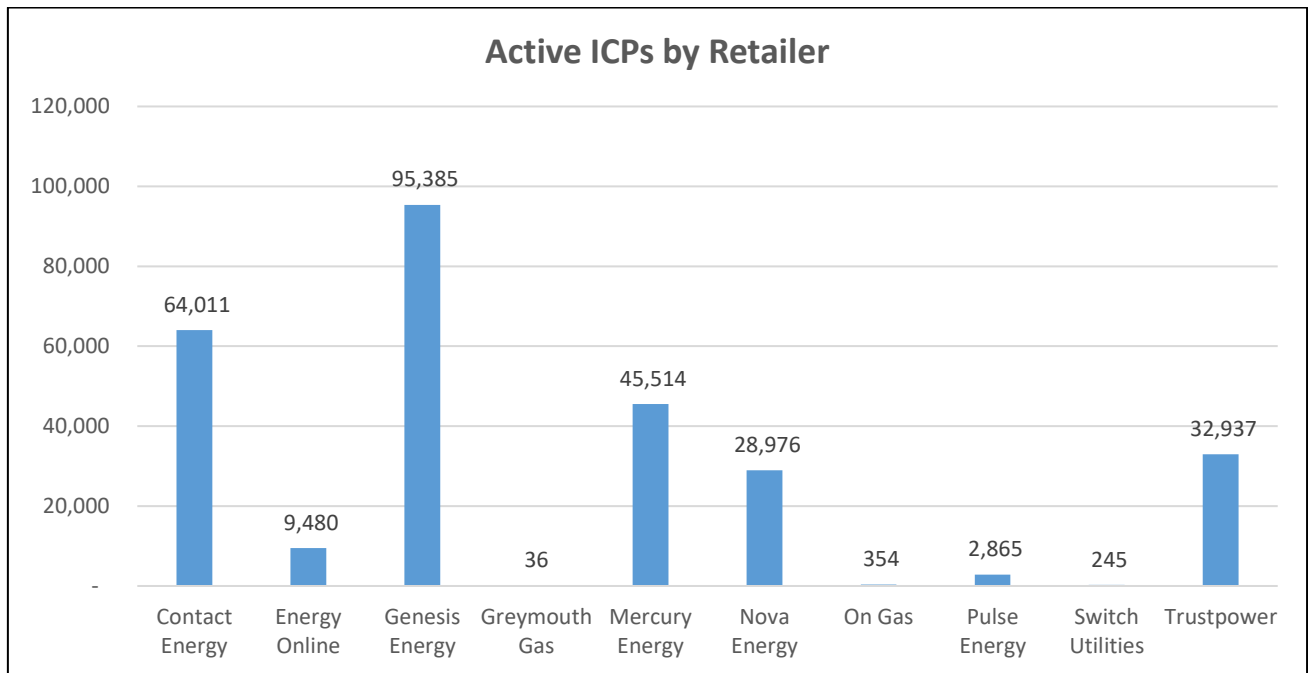
READY—New ICP, gas able to flow, awaiting uplift by retailer

# ICPs by status – Historical

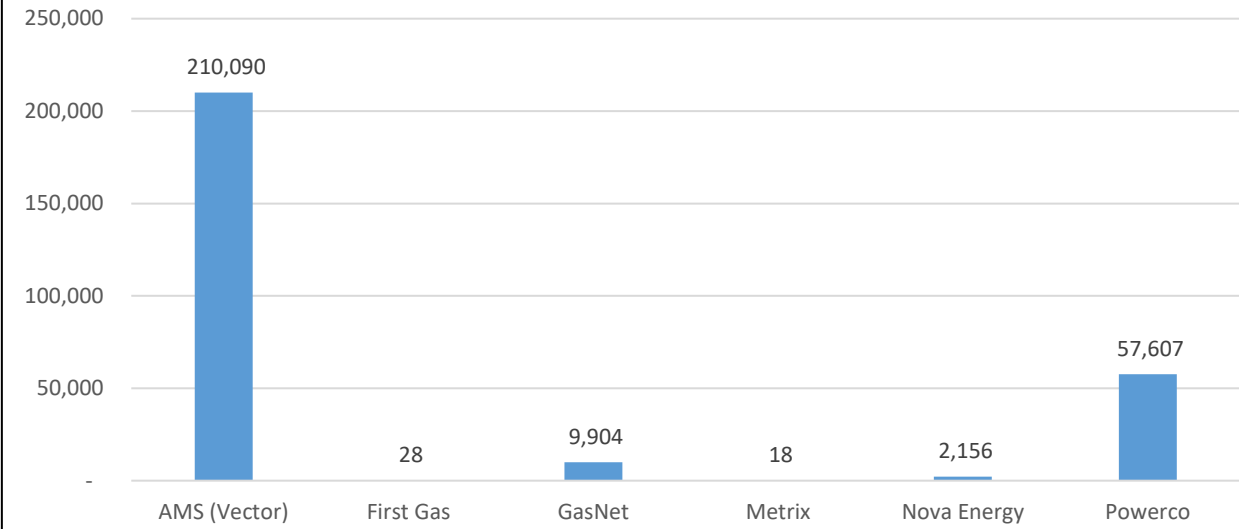


## Market shares – July 2017

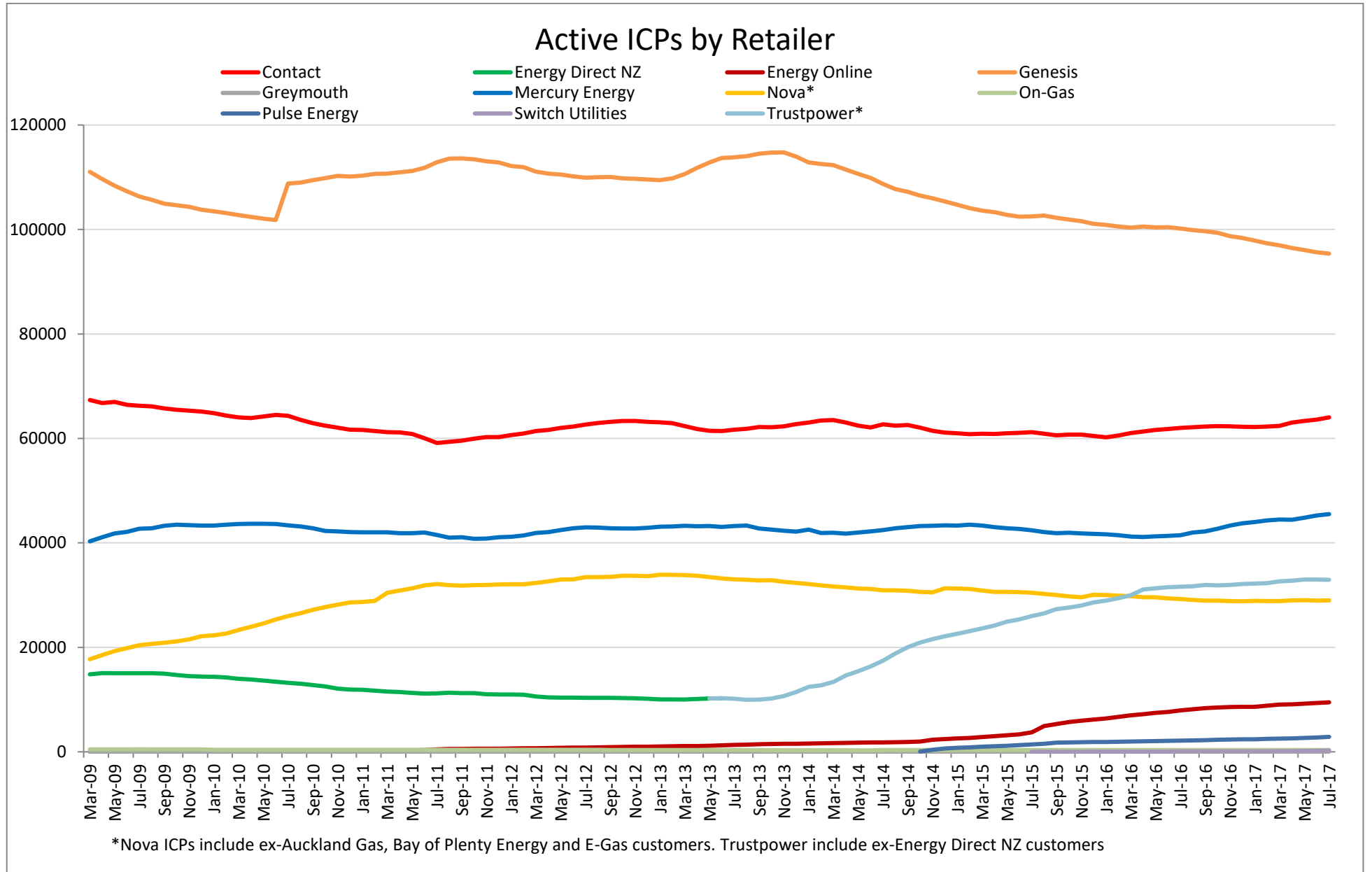
The following charts show the distribution of active-contracted ICPs by retailer, distribution company and meter owner respectively.



### Active ICPs by meter owner



# Market shares – historical





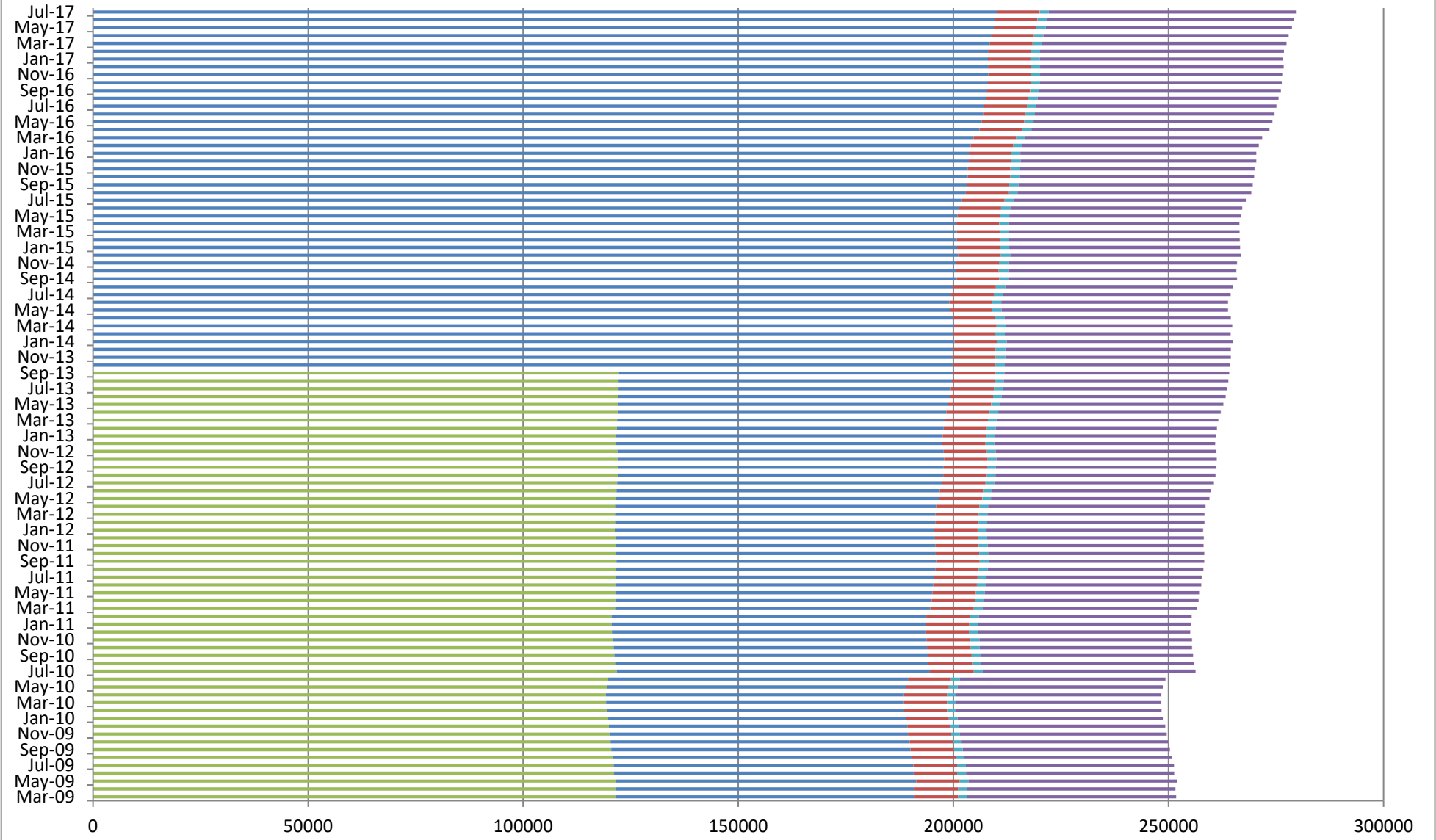
# Active ICPs by Distributor

■ GasNet ■ Nova ■ Powerco ■ First Gas ■ Vector



# Active ICPs by Meter Owner

■ Contact ■ AMS (Vector) ■ First Gas ■ GasNet ■ Metrix ■ Nova Energy ■ Powerco ■ MDL



## **Active-contracted ICPs by gas gate and retailer – July 2017**

The following table shows the distribution of active-contracted ICPs by gas gate, and the distribution by retailer at each gas gate.

The responsible retailer codes are as follows:

CTCT—Contact Energy

GEND—Genesis Energy (TOU)

GENG—Genesis Energy

GEOL—Energy Online

GMTH—Greymouth Gas

GNGC—OnGas (Vector)

GNVG—Nova Energy

MEEN—Mercury Energy

PUNZ—Pulse Energy

SULG—Switch Utilities

TRUS—Trustpower

The gas gate names associated with the codes used in the table can be found [here](http://gasindustry.co.nz/work-programmes/downstream-reconciliation/operations/gas-gate-information/). <http://gasindustry.co.nz/work-programmes/downstream-reconciliation/operations/gas-gate-information/>

| Gas Gate | CTCT | GEND | GENG  | GEOL | GMTH | GNGC | GNVG | MEEN | PUNZ | SULG | TRUS | Grand Total |
|----------|------|------|-------|------|------|------|------|------|------|------|------|-------------|
| ALF15501 |      |      |       |      |      | 1    |      |      |      |      |      | 1           |
| ASH34301 | 53   |      | 53    | 4    |      |      | 43   | 38   | 3    |      | 29   | 223         |
| BAL08201 |      |      |       |      | 1    |      |      |      |      |      |      | 1           |
| BAL09626 |      |      |       |      | 1    |      |      |      |      |      |      | 1           |
| BEL24510 | 2572 | 8    | 13315 | 324  | 1    | 14   | 1594 | 1699 | 136  | 15   | 3203 | 22881       |
| BMC17901 | 594  | 4    | 562   | 71   |      | 7    | 171  | 518  | 23   | 3    | 282  | 2235        |
| BRO36301 |      |      |       |      |      |      | 1    |      |      |      |      | 1           |
| CAM17201 | 352  |      | 1096  | 70   |      | 3    | 205  | 212  | 17   |      | 239  | 2194        |
| DAN05001 | 68   |      | 11    | 4    |      | 1    | 24   | 1    |      |      | 1    | 110         |
| DRU15101 | 14   |      | 7     | 1    |      | 3    | 12   | 6    |      |      | 2    | 45          |
| EGC30701 |      |      |       |      |      | 1    | 2    |      |      |      |      | 3           |
| EGC30702 |      |      | 3     | 1    |      | 1    | 4    |      |      |      |      | 9           |
| ELM12301 | 41   |      | 135   | 2    |      | 3    | 67   | 34   | 4    |      | 24   | 310         |
| FLB15601 |      |      |       |      |      |      | 22   |      |      |      |      | 22          |
| FLD03001 | 387  | 3    | 468   | 25   | 1    | 1    | 444  | 151  | 23   |      | 201  | 1704        |
| FLH21901 | 1    |      | 1     |      |      |      |      |      |      |      | 2    | 4           |
| FOX22101 | 102  |      | 43    | 42   |      |      | 49   | 18   | 10   |      | 9    | 273         |
| GIS07810 | 850  | 4    | 1266  | 143  | 1    | 2    | 392  | 99   | 113  | 1    | 305  | 3176        |
| GLB03401 |      | 1    |       |      |      |      |      |      |      |      |      | 1           |
| HAR11802 |      |      | 1     |      |      | 3    | 6    |      |      |      |      | 10          |
| HEN74101 | 7419 | 8    | 7621  | 907  | 2    | 22   | 1238 | 5109 | 164  | 35   | 2775 | 25300       |
| HPS02993 |      | 1    |       |      |      |      |      |      |      |      |      | 1           |
| HRU16101 | 1    | 1    | 5     |      |      | 1    |      |      |      |      |      | 8           |
| HST05203 |      |      |       |      |      |      | 11   |      |      |      |      | 11          |
| HST05210 | 1973 | 4    | 522   | 823  |      | 10   | 702  | 310  | 68   | 11   | 343  | 4766        |
| HTK08301 | 1066 | 1    | 3745  | 167  |      | 2    | 116  | 610  | 40   |      | 1183 | 6930        |
| HTL16601 | 7    | 1    | 72    | 2    |      | 1    | 10   | 7    | 1    |      | 15   | 116         |
| HTV11301 | 2653 | 8    | 12171 | 644  | 1    | 35   | 489  | 1532 | 119  | 4    | 3253 | 20909       |
| HUN15301 |      |      |       |      | 1    | 2    | 2    |      |      |      |      | 5           |

| Gas Gate | CTCT | GEND | GENG | GEOL | GMTH | GNGC | GNVG | MEEN | PUNZ | SULG | TRUS | Grand Total |
|----------|------|------|------|------|------|------|------|------|------|------|------|-------------|
| HUN15302 |      |      |      |      |      |      | 2    |      |      |      |      | 2           |
| HUN15303 |      |      |      |      | 1    |      |      |      |      |      |      | 1           |
| HWA20801 | 393  |      | 1210 | 50   |      | 1    | 542  | 351  | 31   | 5    | 190  | 2773        |
| HWA20802 |      |      |      |      |      |      | 1    |      |      |      |      | 1           |
| IGW11901 | 63   |      | 213  | 9    |      |      | 195  | 55   | 9    | 1    | 66   | 611         |
| KAP12901 |      |      | 2    |      |      | 2    |      |      |      |      |      | 4           |
| KAW04405 | 17   |      | 77   | 3    |      |      | 101  | 7    | 21   |      | 5    | 231         |
| KAW04410 |      |      |      |      |      | 1    |      |      |      |      |      | 1           |
| KAW04411 |      |      |      |      |      | 1    |      |      |      |      |      | 1           |
| KIG16801 | 6    |      | 1    |      |      |      | 1    | 2    |      |      |      | 10          |
| KIH19101 | 11   |      | 84   | 3    |      |      | 7    | 9    |      |      | 12   | 126         |
| KIN02601 | 1    |      | 3    |      |      |      | 2    | 1    |      |      | 1    | 8           |
| KIN04310 |      |      |      |      |      | 1    |      |      |      |      |      | 1           |
| KIW34201 |      |      |      |      | 1    |      |      |      |      |      |      | 1           |
| KIW34202 |      | 1    |      |      | 1    |      |      |      |      |      |      | 2           |
| KKI23701 |      |      |      |      |      |      | 2    |      |      |      |      | 2           |
| KPA12401 | 9    |      | 26   | 1    |      |      | 13   | 4    |      |      | 3    | 56          |
| KRG24101 |      |      | 1    |      |      |      | 1    |      |      |      | 1    | 3           |
| KTK23901 |      | 1    |      |      |      |      |      |      |      |      |      | 1           |
| KUK22401 | 3    |      | 13   | 4    |      |      | 4    |      |      |      | 2    | 26          |
| KUP37503 |      | 1    |      |      |      |      |      |      |      |      |      | 1           |
| KUR33601 |      |      |      |      |      | 1    |      |      |      |      |      | 1           |
| LAB20201 | 18   |      | 30   | 4    |      |      | 9    | 14   | 4    |      | 37   | 116         |
| LCF20010 |      |      |      |      |      | 1    |      |      |      |      |      | 1           |
| LCF20011 |      |      |      |      |      | 1    |      |      |      |      |      | 1           |
| LNB24301 | 69   | 2    | 111  | 10   |      | 4    | 41   | 28   | 1    |      | 31   | 297         |
| LVN24401 | 1104 | 2    | 439  | 364  |      | 3    | 403  | 116  | 71   |      | 156  | 2658        |
| MGK05401 |      |      |      |      | 1    |      |      |      |      |      |      | 1           |
| MMU08001 | 200  | 4    | 1363 | 82   | 2    | 3    | 377  | 261  | 18   |      | 1935 | 4245        |

| Gas Gate | CTCT | GEND | GENG | GEOL | GMTH | GNGC | GNVG | MEEN | PUNZ | SULG | TRUS | Grand Total |
|----------|------|------|------|------|------|------|------|------|------|------|------|-------------|
| MNA23402 | 25   |      | 106  | 6    |      | 1    | 48   | 32   | 6    |      | 23   | 247         |
| MNG34001 |      | 1    |      |      |      |      |      |      |      |      |      | 1           |
| MRV16301 |      |      |      |      |      | 1    |      |      |      |      |      | 1           |
| MRV16302 | 124  | 1    | 387  | 6    |      |      | 66   | 88   | 12   |      | 34   | 718         |
| MSD01801 |      |      |      |      |      |      | 1    |      |      |      |      | 1           |
| MSD01802 |      |      |      |      |      | 1    |      |      |      |      |      | 1           |
| MTG17301 | 2    |      | 20   |      |      |      | 1    | 1    | 2    |      | 5    | 31          |
| MTN23801 | 51   |      | 147  | 7    |      | 1    | 38   | 64   | 10   |      | 128  | 446         |
| MTP20601 | 1    |      | 5    |      |      |      | 1    |      |      |      |      | 7           |
| MUT19001 |      |      |      |      |      | 1    |      |      |      |      |      | 1           |
| NGW14501 | 19   |      | 97   | 3    |      |      | 2    | 11   |      | 1    | 31   | 164         |
| NPL12101 | 1292 | 2    | 4335 | 201  |      | 7    | 3511 | 1156 | 155  | 16   | 1101 | 11776       |
| OKA13201 | 7    |      | 22   |      |      |      | 23   | 9    |      |      | 4    | 65          |
| OKS32801 | 1    |      |      |      |      |      |      | 1    |      |      |      | 2           |
| OKU16701 | 23   |      | 114  | 4    |      |      | 81   | 45   | 1    |      | 29   | 297         |
| OKW23401 |      |      |      |      |      |      | 1    |      |      |      |      | 1           |
| OPK13001 | 25   |      | 84   | 5    |      |      | 35   | 30   | 4    |      | 8    | 191         |
| OPO32001 | 6    |      | 51   | 2    |      |      | 38   |      | 2    |      | 4    | 103         |
| ORD24701 | 1    |      |      |      |      |      | 1    |      |      |      | 1    | 3           |
| OTA22601 | 75   |      | 138  | 57   |      |      | 52   | 17   | 16   |      | 28   | 383         |
| OTO14101 | 11   |      | 134  | 4    |      |      | 10   | 1    | 1    |      | 6    | 167         |
| PAH23101 |      |      | 4    |      |      |      |      |      |      |      |      | 4           |
| PAH23201 | 12   |      | 57   | 2    |      |      | 4    | 6    | 1    |      | 19   | 101         |
| PAP06610 | 5675 | 10   | 2563 | 647  | 4    | 31   | 720  | 5857 | 176  | 11   | 767  | 16461       |
| PAU20101 | 774  |      | 1444 | 416  |      | 2    | 328  | 138  | 140  | 1    | 192  | 3435        |
| PGH15901 |      |      | 8    |      |      |      | 1    | 3    |      |      | 1    | 13          |
| PGU13101 |      |      | 1    |      |      |      |      | 1    |      |      |      | 2           |
| PHT04901 | 28   |      | 34   | 3    |      |      | 18   | 4    |      |      | 1    | 88          |
| PHT04902 |      |      |      |      |      | 1    |      |      |      |      |      | 1           |

| Gas Gate | CTCT | GEND | GENG | GEOL | GMTH | GNGC | GNVG | MEEN | PUNZ | SULG | TRUS | Grand Total |
|----------|------|------|------|------|------|------|------|------|------|------|------|-------------|
| PIR31101 | 3    |      | 26   | 1    |      |      | 4    | 8    | 2    |      | 5    | 49          |
| PLN24201 | 3293 | 3    | 4322 | 342  |      | 17   | 3737 | 1235 | 255  | 4    | 1565 | 14773       |
| PPA33201 | 22   |      | 122  | 9    |      | 1    | 43   | 26   | 2    |      | 186  | 411         |
| PTA20901 | 13   |      | 97   | 2    |      | 1    | 30   | 17   | 6    |      | 18   | 184         |
| PTR32601 | 57   |      | 197  | 5    |      | 1    | 23   | 36   | 4    |      | 18   | 341         |
| PUK04201 | 114  | 1    | 40   | 39   |      | 2    | 66   | 52   |      | 1    | 17   | 332         |
| PYE36601 | 7    |      | 10   | 2    |      |      | 6    | 5    |      |      | 44   | 74          |
| RAG33401 |      |      |      |      |      | 1    |      |      |      |      |      | 1           |
| RAM15201 | 3    |      |      | 2    |      | 1    | 1    |      |      |      |      | 7           |
| ROT08101 | 513  |      | 1677 | 206  |      | 12   | 651  | 438  | 183  | 2    | 182  | 3864        |
| RPR30801 | 2    |      | 15   |      |      | 1    | 3    | 1    |      |      | 2    | 24          |
| STR10201 | 84   |      | 439  | 17   |      |      | 219  | 90   | 18   |      | 60   | 927         |
| TAC31001 |      |      |      |      |      | 1    |      |      |      |      |      | 1           |
| TAT16401 |      |      |      |      | 1    |      |      |      |      |      |      | 1           |
| TAU07001 | 549  |      | 906  | 51   |      | 2    | 377  | 140  | 46   | 4    | 139  | 2214        |
| TAW31004 | 158  | 1    | 743  | 47   |      | 3    | 112  | 74   | 13   |      | 121  | 1272        |
| TCC00201 | 1    |      |      |      |      |      |      |      |      |      |      | 1           |
| THO22701 | 4    |      | 6    | 1    |      |      |      | 3    | 1    |      |      | 15          |
| TIR33501 |      |      |      |      |      | 1    |      |      |      |      |      | 1           |
| TIR33502 | 17   |      | 40   | 1    |      |      | 10   | 4    | 2    |      | 2    | 76          |
| TKN17001 | 11   |      | 133  | 3    |      |      | 11   | 1    |      |      | 8    | 167         |
| TKP05101 |      |      |      |      |      |      | 1    |      |      |      |      | 1           |
| TKR19701 | 140  |      | 577  | 16   |      | 3    | 88   | 68   | 31   |      | 68   | 991         |
| TKS17401 |      | 1    | 3    |      | 1    |      | 1    |      |      |      |      | 6           |
| TPK33301 | 23   |      | 194  | 10   |      |      | 52   | 19   | 5    |      | 313  | 616         |
| TRC02003 | 1    |      |      |      |      |      |      |      |      |      |      | 1           |
| TRG07701 | 197  | 1    | 1376 | 130  |      | 2    | 520  | 222  | 23   | 3    | 2190 | 4664        |
| TTK30601 | 2    |      | 3    | 1    |      |      |      |      |      |      |      | 6           |
| TUK06502 | 3    | 1    | 1    |      |      | 1    | 5    | 3    |      |      | 1    | 15          |

| Gas Gate           | CTCT         | GEND       | GENG         | GEOL        | GMTH      | GNGC       | GNVG         | MEEN         | PUNZ        | SULG       | TRUS         | Grand Total   |
|--------------------|--------------|------------|--------------|-------------|-----------|------------|--------------|--------------|-------------|------------|--------------|---------------|
| TWA35610           | 7443         | 9          | 10591        | 691         |           | 29         | 5059         | 3032         | 137         | 31         | 3904         | <b>30926</b>  |
| TWB24810           |              |            |              |             |           |            | 191          |              |             |            |              | <b>191</b>    |
| WAG21501           | 904          | 4          | 2999         | 190         |           | 7          | 323          | 1162         | 259         |            | 3252         | <b>9100</b>   |
| WAK22801           |              |            | 1            |             |           |            |              |              |             |            |              | <b>1</b>      |
| WAK22802           | 290          |            | 675          | 179         |           |            | 110          | 78           | 53          |            | 93           | <b>1478</b>   |
| WEL18301           | 5            |            | 14           |             |           |            |              | 4            |             |            | 2            | <b>25</b>     |
| WHG07501           | 171          | 2          | 578          | 24          |           | 2          | 167          | 186          | 18          | 7          | 9            | <b>1164</b>   |
| WHK32101           | 33           | 1          | 126          | 11          | 1         | 2          | 238          | 6            | 10          | 1          | 9            | <b>438</b>    |
| WKE19201           |              | 1          |              |             |           |            |              |              |             |            |              | <b>1</b>      |
| WRK18901           | 49           |            | 117          | 6           |           | 1          | 22           | 43           | 4           | 4          | 35           | <b>281</b>    |
| WST03610           | 19597        | 13         | 8717         | 2013        | 13        | 71         | 3604         | 18243        | 273         | 71         | 2160         | <b>54775</b>  |
| WTA16501           | 2            | 1          | 33           |             |           | 5          | 5            | 3            |             |            | 2            | <b>51</b>     |
| WTG06910           | 838          | 2          | 3808         | 128         |           | 5          | 452          | 465          | 60          | 2          | 1063         | <b>6823</b>   |
| WTK33901           | 1136         | 1          | 1856         | 212         |           | 1          | 169          | 1060         | 43          | 9          | 641          | <b>5128</b>   |
| WTR12001           | 102          |            | 400          | 15          |           | 2          | 386          | 108          | 13          | 1          | 138          | <b>1165</b>   |
| WTT20301           |              |            |              |             |           | 1          |              |              |             |            |              | <b>1</b>      |
| WVY23601           |              |            | 3            |             |           |            |              | 4            |             |            |              | <b>7</b>      |
| WKM17701           | 25           |            | 8            | 3           |           |            | 5            | 22           | 2           | 1          | 3            | <b>69</b>     |
| KAI07602           |              |            |              |             | 1         |            |              |              |             |            |              | <b>1</b>      |
| <b>Grand Total</b> | <b>64011</b> | <b>111</b> | <b>95274</b> | <b>9480</b> | <b>36</b> | <b>354</b> | <b>28976</b> | <b>45514</b> | <b>2865</b> | <b>245</b> | <b>32937</b> | <b>279803</b> |