

# Gas Registry Statistics – June 2017

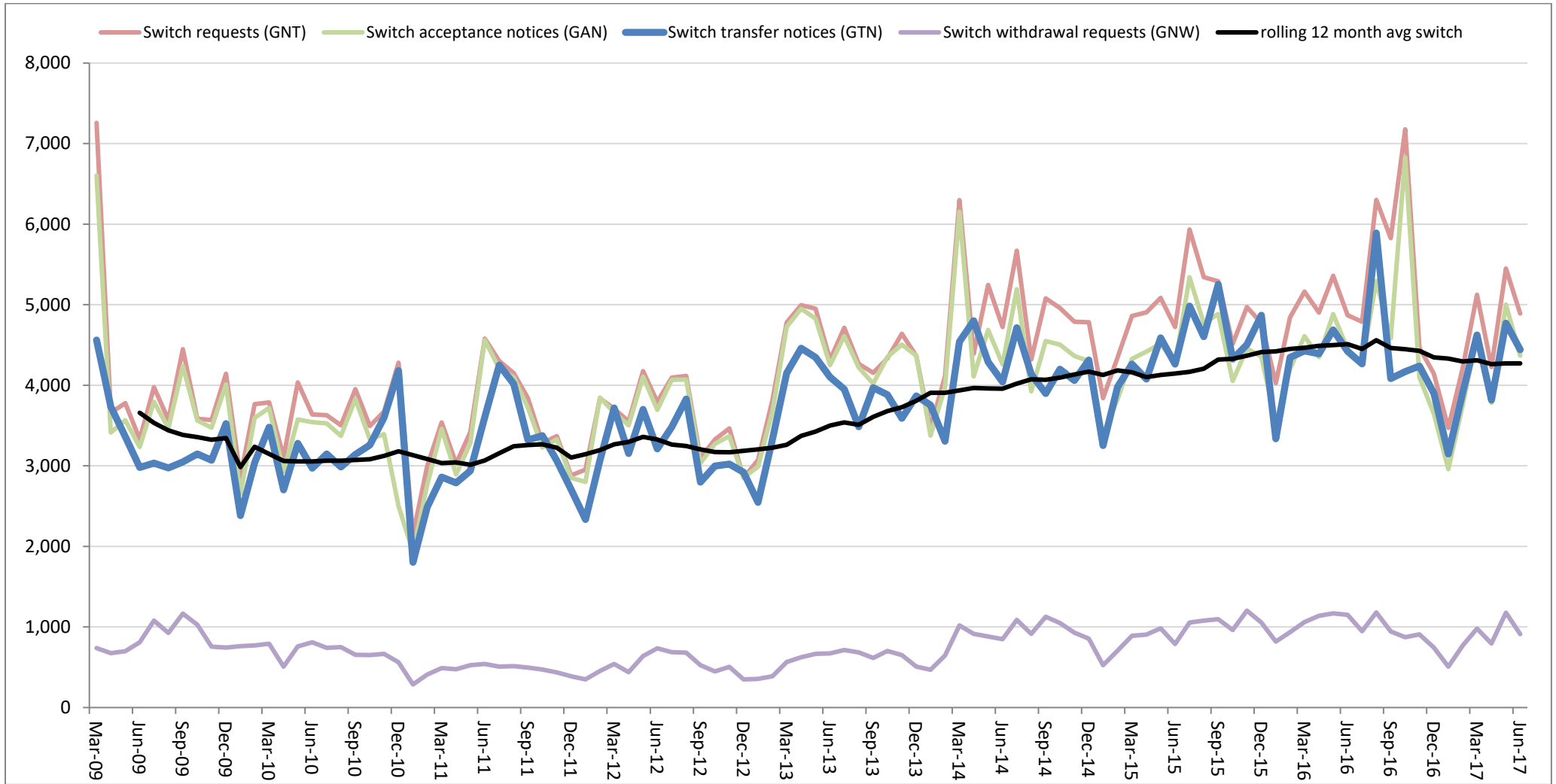
The following report provides statistics and charts illustrating gas registry usage, switching volumes and breakdowns of retailer, distributor and meter owner market shares. The information is provided in accordance with current version of the Determinations by the Industry Body (Gas Industry Co) under the Gas (Switching Arrangements) Rules 2008.

## Summary registry statistics – June 2017

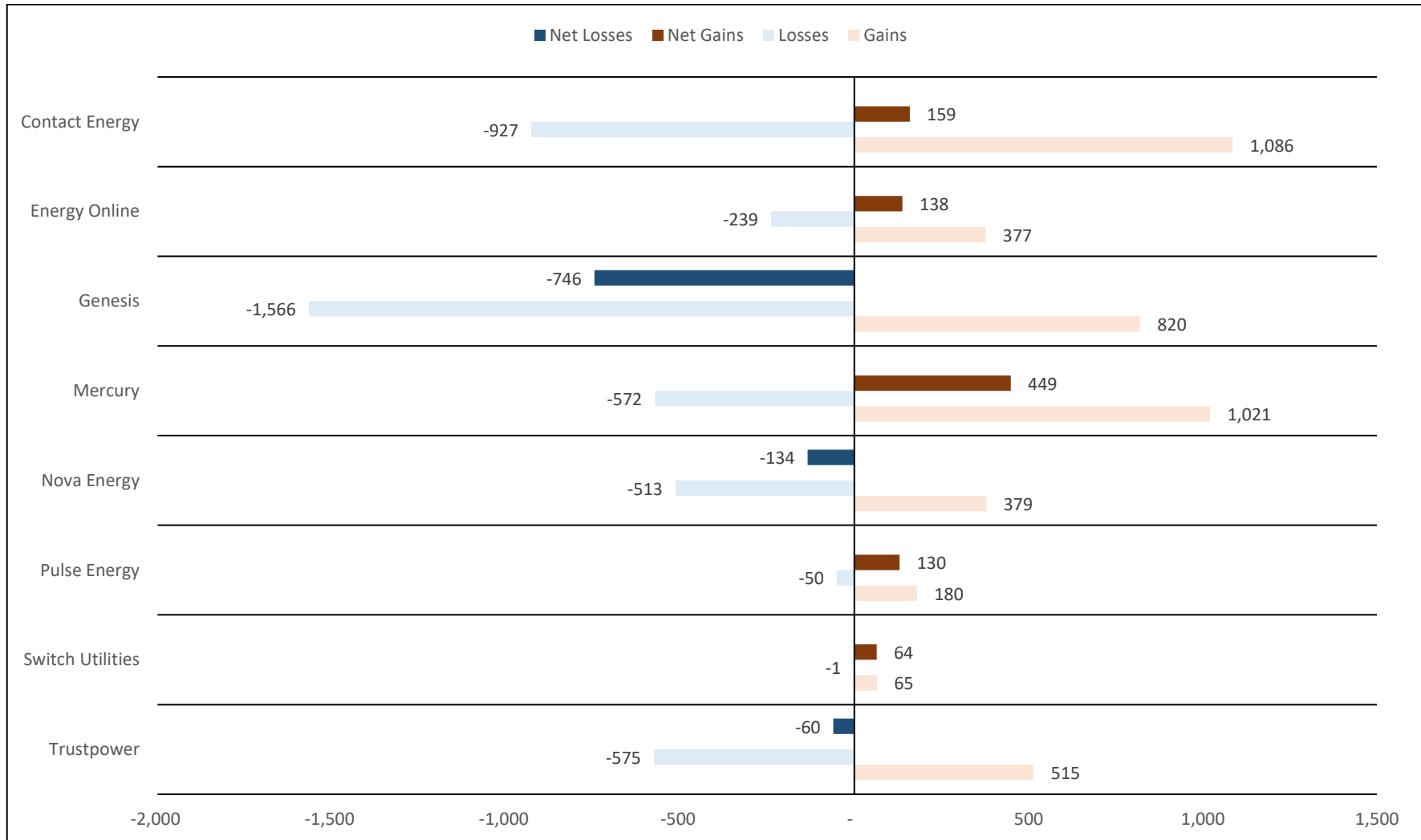
ICP enquiries processed in month (Online)	45,942
ICP enquiries processed in month (Offline)	48,574,991
<b>Total ICP enquiries processed in month</b>	<b>48,620,933</b>
ICPs added to the registry in month	581
ICPs changed in month	4,518
ICPs decommissioned in month	527
Valid standard switch requests (GNT-S) received in month	2,414
Valid move switch requests (GNT-SM) received in month	2,477
<b>Valid switch requests (GNT) received in month</b>	<b>4,891</b>
Valid switch acceptance notices (GAN) received in month	4,368
<b>Valid switch transfer notices (GTN) received in month</b>	<b>4,443</b>
Valid switch withdrawal requests (GNW) received in month	913
Valid switch withdrawal acceptances (GAW-A) received in month	863
Valid switch withdrawal rejections (GAW-R) received in month	57
Valid switch reading renegotiation requests (GNC) received in month	136
Valid switch reading renegotiation acceptances (GAC-A) received in month	108
Valid switch reading renegotiation rejections (GAC-R) received in month	19

Note: A switch transfer notice (GTN) is the last stage required to complete the switching process. This statistic indicates the number of switches completed in the month.

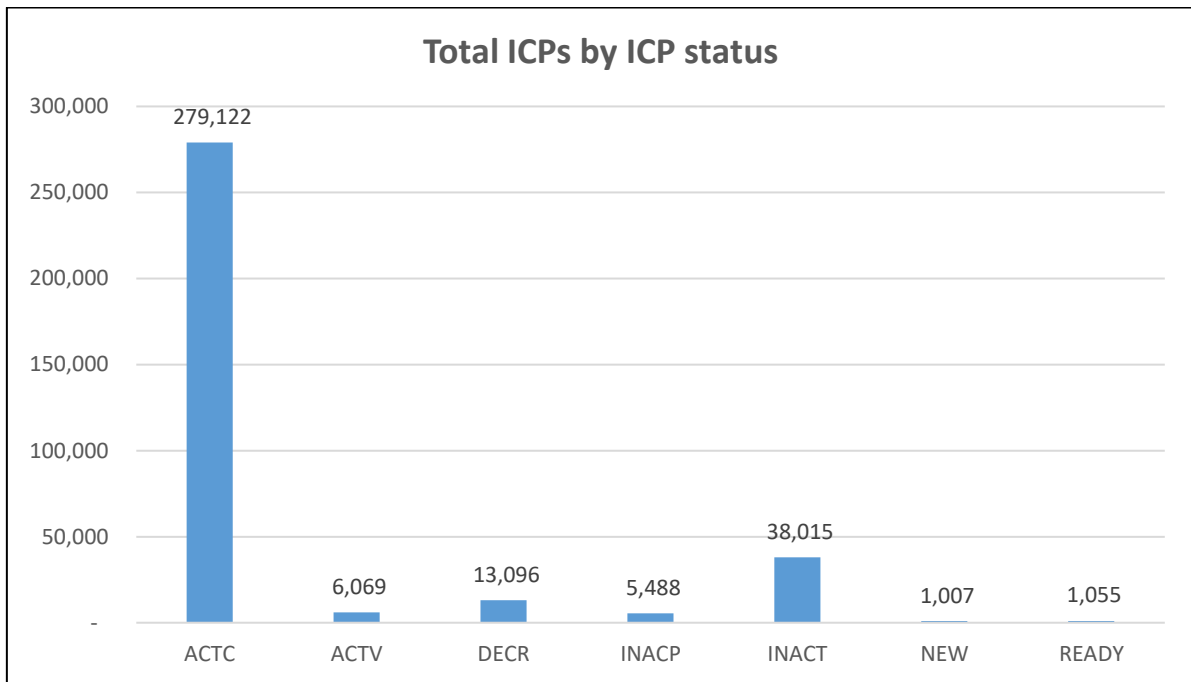
# Switching activity – historical



## Switching gains and losses – June 2017



## ICPs by status – June 2017



Installation control points (ICPs) are the record of customer installations in the gas registry. The meaning of the ICP status codes are as follows:

**ACTC**—Active contracted (gas is able to flow and the customer has a contract with a retailer)

**ACTV**—Active vacant (gas is able to flow and the premises is vacant)

**DECR**—Decommissioned

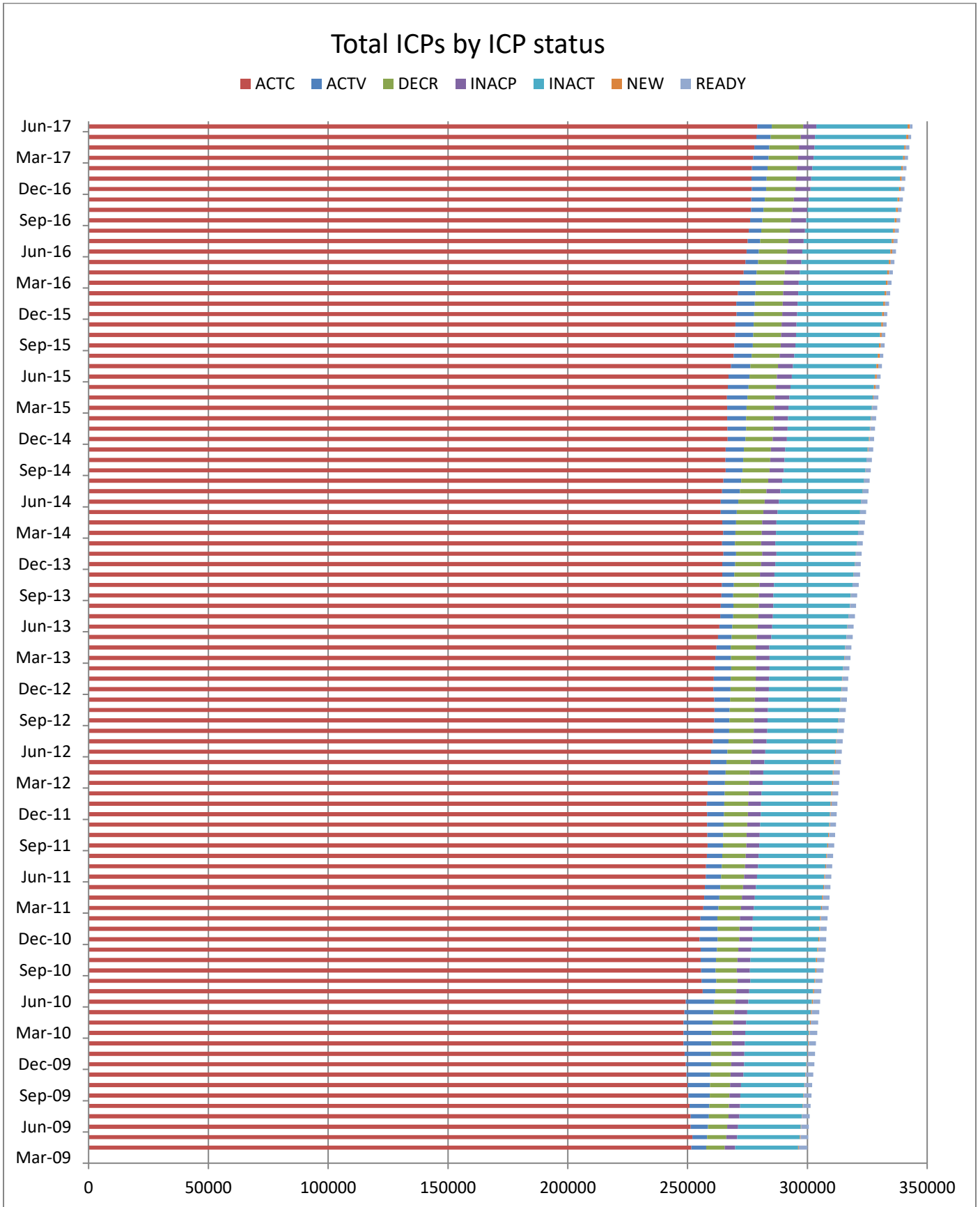
**INACP**—Inactive permanent (gas unable to flow due to a permanent disconnection)

**INACT**—Gas unable to flow due to a temporary disconnection

**NEW**—Newly created ICP, gas not yet able to flow

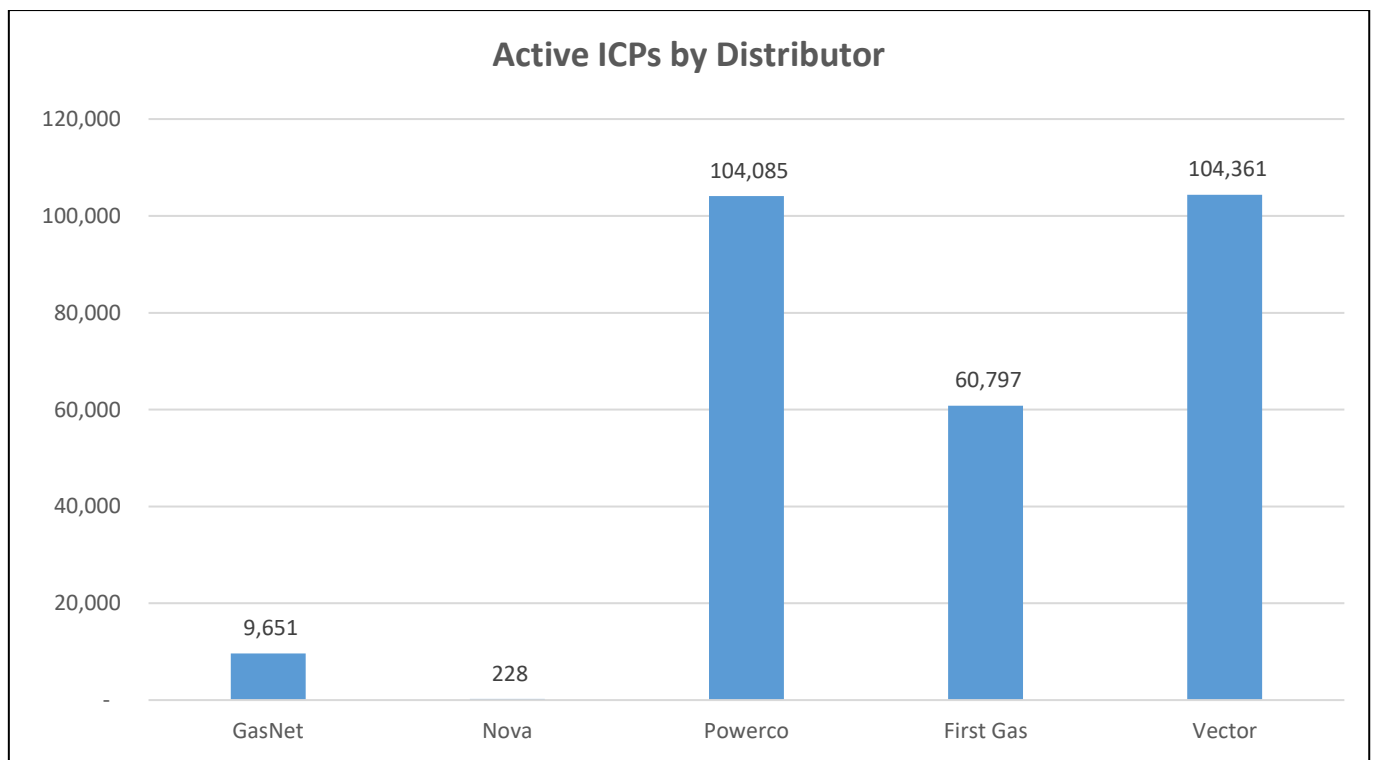
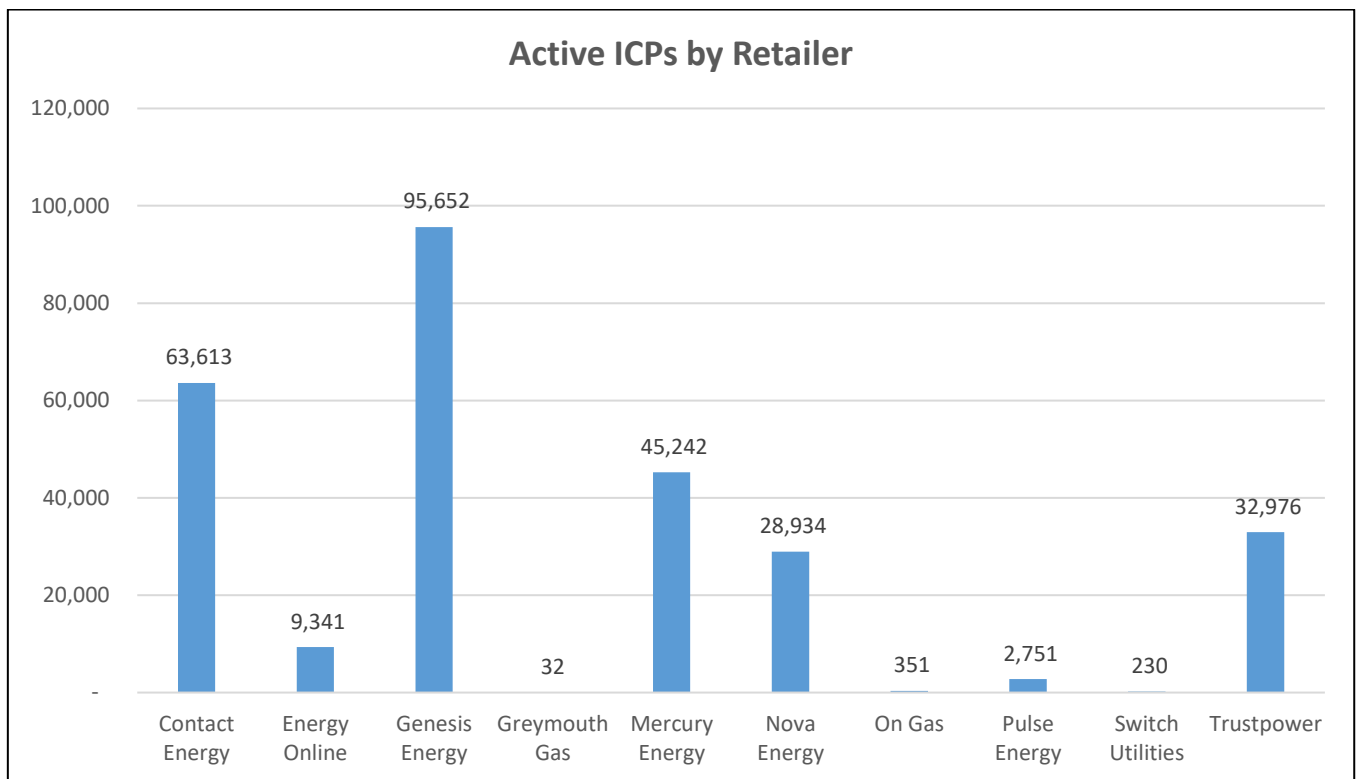
**READY**—New ICP, gas able to flow, awaiting uplift by retailer

# ICPs by status – Historical

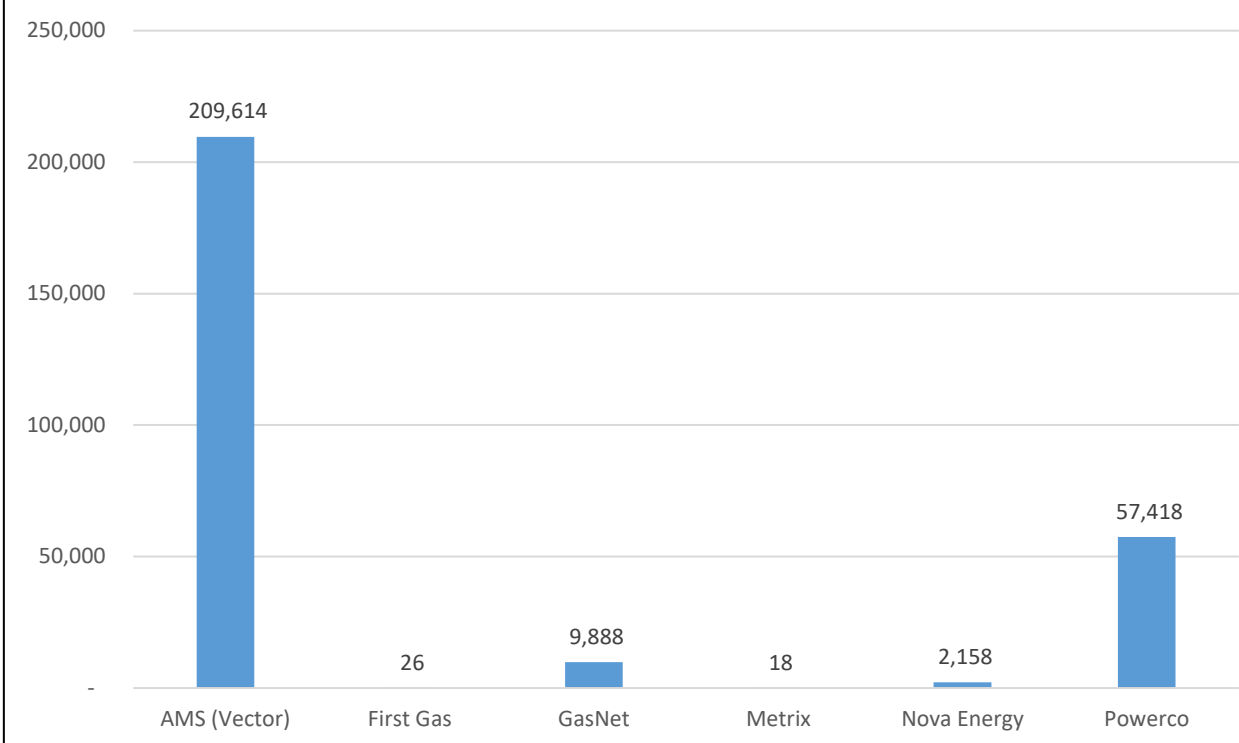


## Market shares – June 2017

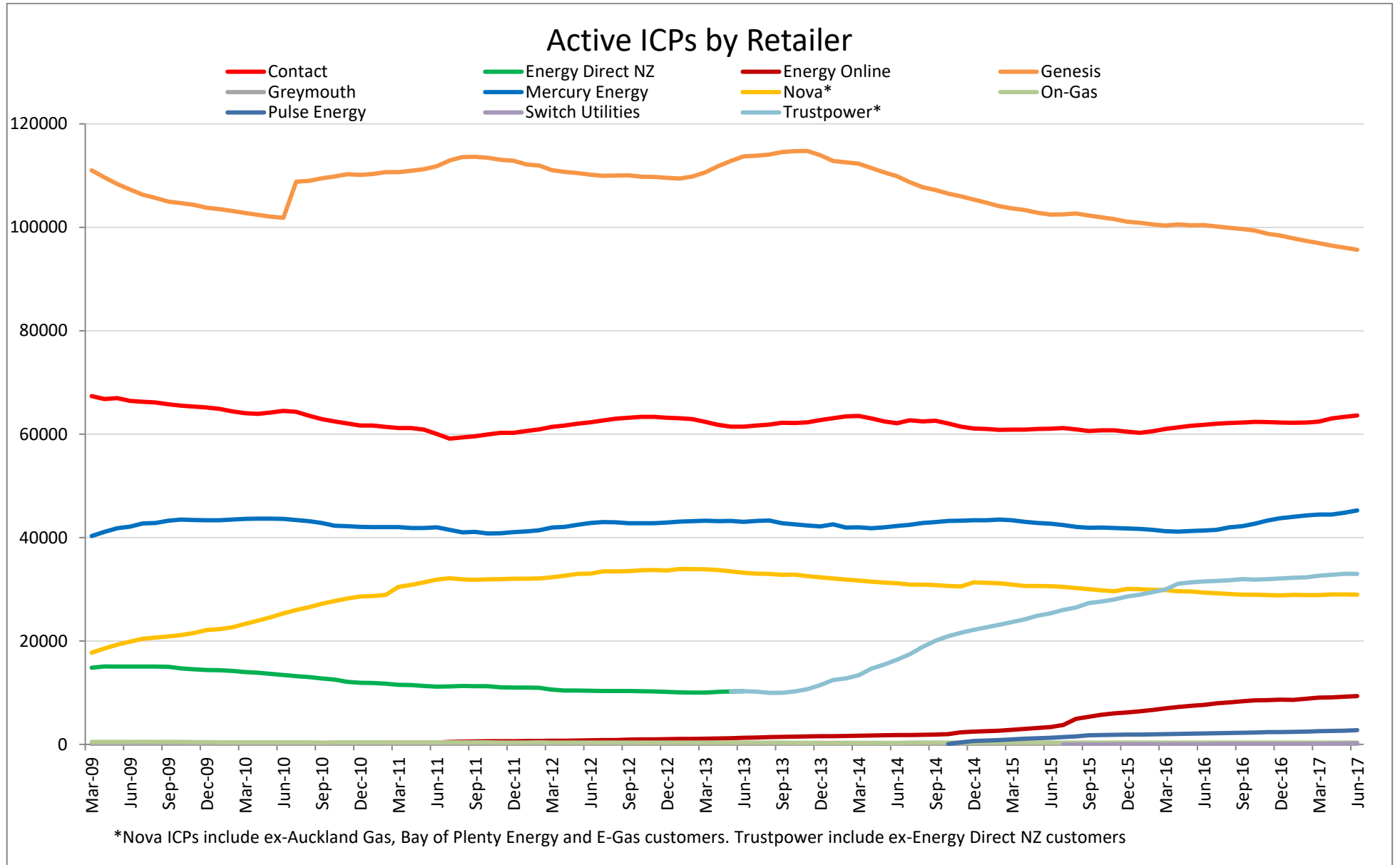
The following charts show the distribution of active-contracted ICPs by retailer, distribution company and meter owner respectively.



### Active ICPs by meter owner



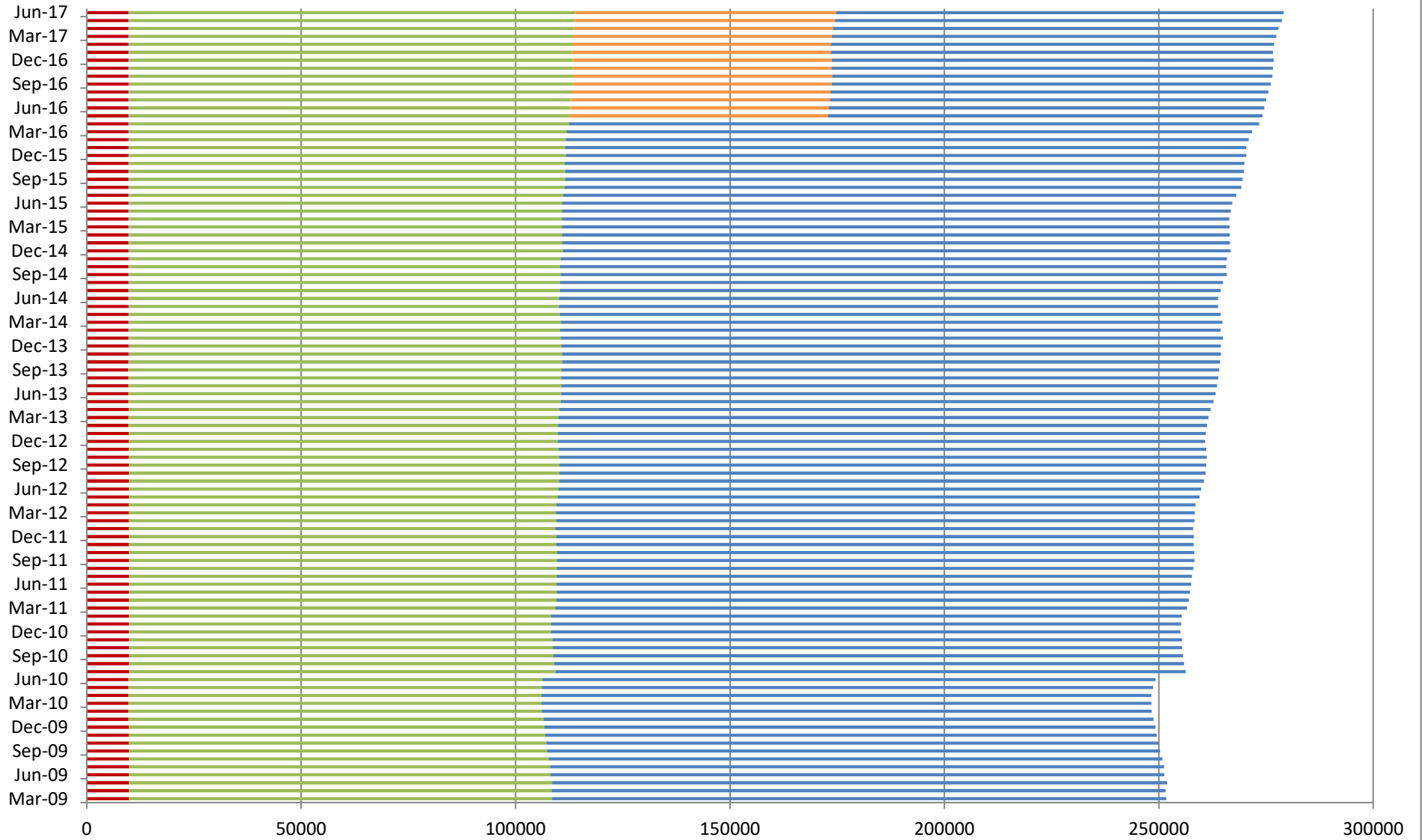
## Market shares – historical





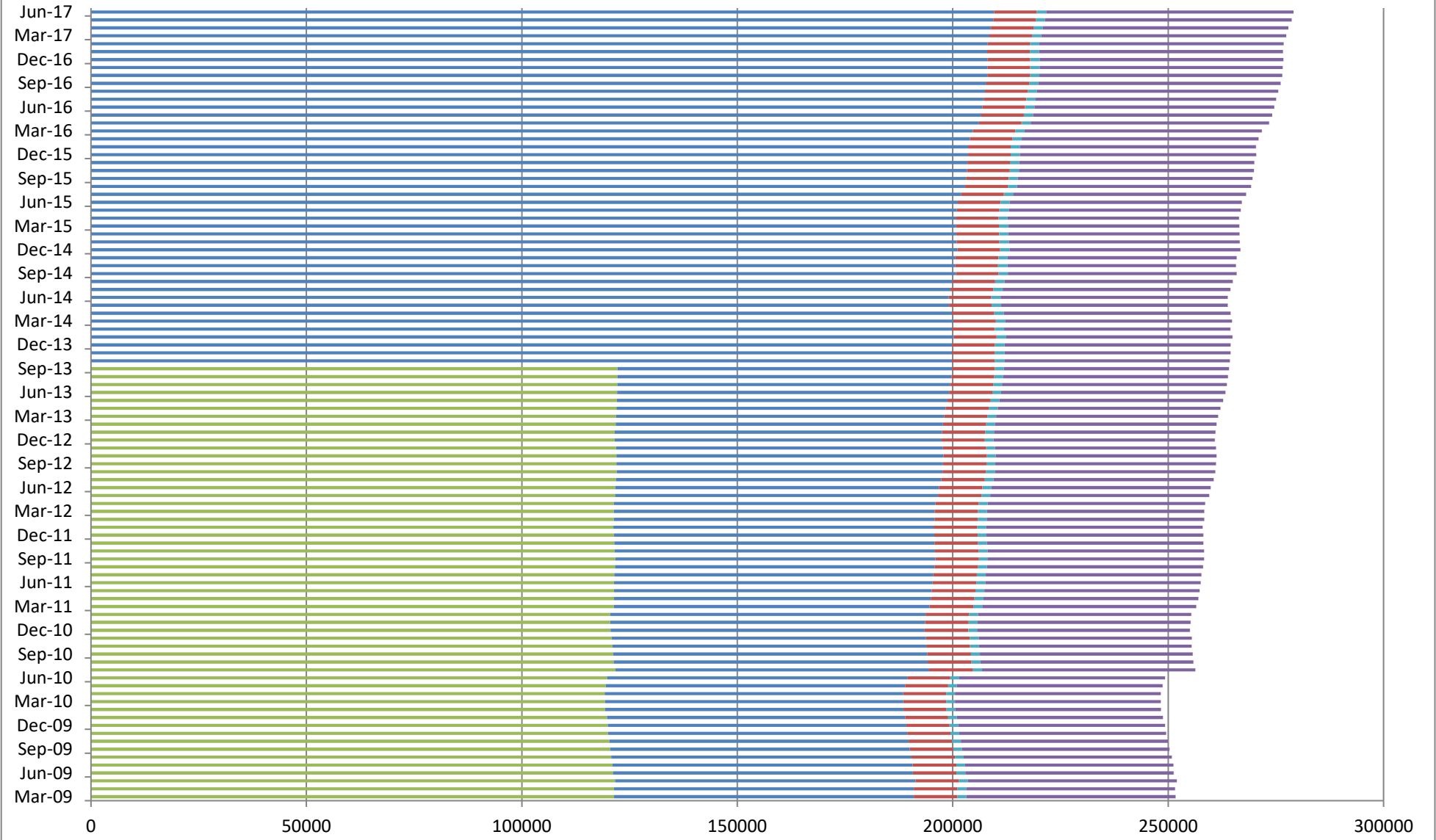
# Active ICPs by Distributor

■ GasNet ■ Nova ■ Powerco ■ First Gas ■ Vector



# Active ICPs by Meter Owner

Contact AMS (Vector) First Gas GasNet Metrix Nova Energy Powerco MDL



## **Active-contracted ICPs by gas gate and retailer – June 2017**

The following table shows the distribution of active-contracted ICPs by gas gate, and the distribution by retailer at each gas gate.

The responsible retailer codes are as follows:

CTCT—Contact Energy

GEND—Genesis Energy (TOU)

GENG—Genesis Energy

GEOL—Energy Online

GMTH—Greymouth Gas

GNGC—OnGas (Vector)

GNVG—Nova Energy

MEEN—Mercury Energy

PUNZ—Pulse Energy

SULG—Switch Utilities

TRUS—Trustpower

The gas gate names associated with the codes used in the table can be found [here](http://gasindustry.co.nz/work-programmes/downstream-reconciliation/operations/gas-gate-information/). <http://gasindustry.co.nz/work-programmes/downstream-reconciliation/operations/gas-gate-information/>

Gas Gate	CTCT	GEND	GENG	GEOL	GMTH	GNGC	GNVG	MEEN	PUNZ	SULG	TRUS	Grand Total
ALF15501						1						1
ASH34301	47		57	4			44	40	3		28	223
BAL08201					1							1
BAL09626					1							1
BEL24510	2554	8	13285	323	1	14	1574	1709	135	16	3208	22827
BMC17901	584	4	563	72		7	175	520	18	3	286	2232
BRO36301							1					1
CAM17201	351		1098	67		3	205	206	17		241	2188
DAN05001	66		11	4		1	24	1			1	108
DRU15101	13		7	1		3	13	6			2	45
EGC30702			3	1		2	6					12
ELM12301	42		137	2		3	70	37	3		25	319
FLB15601							22					22
FLD03001	360	3	484	26	1	1	447	157	23		206	1708
FLH21901	1		1								2	4
FOX22101	104		43	43			53	19	7		8	277
GIS07810	846	4	1292	142	1	2	389	65	109	1	310	3161
GLB03401		1										1
HAR11802			1			5	4					10
HEN74101	7304	8	7730	887	2	22	1258	4974	160	34	2778	25157
HPS02993		1										1
HRU16101		1	5			1						7
HST05203							11					11
HST05210	1972	4	515	820		11	705	310	65	1	342	4745
HTK08301	1067	1	3749	162		2	112	610	40		1143	6886
HTL16601	7	1	73	2		1	10	7	1		15	117
HTV11301	2659	8	12200	625	1	35	484	1519	118	6	3261	20916
HUN15301					1	1	2					4
HUN15302							2					2

Gas Gate	CTCT	GEND	GENG	GEOL	GMTH	GNGC	GNVG	MEEN	PUNZ	SULG	TRUS	Grand Total
HWA20801	398		1212	46		1	540	347	32	6	191	2773
HWA20802							1					1
IGW11901	65		212	9			195	57	9	1	65	613
KAP12901			2			2						4
KAW04405	17		76	3			102	6	20		5	229
KAW04410						1						1
KAW04411						1						1
KIG16801	5		1				1	2				9
KIH19101	9		83	5			7	9			12	125
KIN02601	1		3				2	1			1	8
KIN04310						1						1
KIW34201					1							1
KIW34202		1			1							2
KKI23701							2					2
KPA12401	9		26	1			13	4			3	56
KRG24101			1				1				1	3
KTK23901		1										1
KUK22401	4		13	4			4				2	27
KUP37503		1										1
KUR33601						1						1
LAB20201	20		32	4			10	9	4		36	115
LCF20010						1						1
LCF20011						1						1
LNB24301	69	2	113	11		4	40	25	1		31	296
LVN24401	1108	2	439	357		3	405	119	53		163	2649
MGK05401					1							1
MMU08001	196	5	1368	79	2	3	378	258	18		1937	4244
MNA23402	26		108	7		1	46	32	6		23	249
MNG34001		1										1

Gas Gate	CTCT	GEND	GENG	GEOL	GMTH	GNGC	GNVG	MEEN	PUNZ	SULG	TRUS	Grand Total
MRV16301			2			1						3
MRV16302	128	1	389	6			68	89	12		33	726
MSD01801							1					1
MSD01802						1						1
MTG17301	2		20					1	2		5	30
MTN23801	52		144	7		1	38	64	10		128	444
MTP20601	1		5				1					7
MUT19001						1						1
NGW14501	21		100	2			2	10		1	31	167
NPL12101	1298	2	4343	193		5	3496	1135	153	16	1112	11753
OKA13201	8		21				23	9			4	65
OKS32801	1							1				2
OKU16701	23		111	4			82	45	1		28	294
OKW23401							1					1
OPK13001	24		82	5			35	30	3		8	187
OPO32001	5		51	3			38		2		4	103
ORD24701	1						1				1	3
OTA22601	74		138	56			53	19	12		29	381
OTO14101	9		134	4			11	1	1		6	166
PAH23101			4									4
PAH23201	13		57				4	5	1		19	99
PAP06610	5635	10	2572	646	4	31	731	5854	169	12	763	16427
PAU20101	734		1487	425		2	337	140	113	1	191	3430
PGH15901			9				1	3			1	14
PGU13101			1					1				2
PHT04901	27		35	2			18	4			1	87
PHT04902						1						1
PIR31101	3		26	2			4	8	2		5	50
PLN24201	3269	3	4314	335		17	3737	1241	254	4	1575	14749

Gas Gate	CTCT	GEND	GENG	GEOL	GMTH	GNGC	GNVG	MEEN	PUNZ	SULG	TRUS	Grand Total
PPA33201	21		120	8		1	43	25	1		183	402
PTA20901	14		99	2		1	30	17	6		18	187
PTR32601	48		203	6		1	24	37	3		17	339
PUK04201	109	1	41	39		2	68	52		1	17	330
PYE36601	7		8	2			6	4			44	71
RAG33401						1						1
RAM15201	3			2		1	1					7
ROT08101	507		1690	203		11	660	411	178	1	181	3842
RPR30801	2		15			1	3	1			2	24
STR10201	85		437	18			217	94	17		62	930
TAC31001						1						1
TAT16401					1							1
TAU07001	545		930	53		2	352	140	48	4	139	2213
TAW31004	151	1	746	47		3	112	75	14		122	1271
TCC00201	1											1
THO22701	4		7	1				1				13
TIR33501						1						1
TIR33502	15		41	2			10	4	2		3	77
TKN17001	10		131	3			11	1			7	163
TKPO5101							1					1
TKR19701	138		580	15		3	87	67	31		67	988
TKS17401	1	1	3		1		1					7
TPK33301	22		195	10			52	18	5		312	614
TRC02003	1											1
TRG07701	190	1	1384	134		2	521	205	23	3	2186	4649
TTK30601	2		3	1								6
TUK06502	3	1	1			1	5	3			1	15
TWA35610	7422	9	10575	662		28	5021	3049	130	30	3947	30873
TWB24810							192					192

<b>Gas Gate</b>	<b>CTCT</b>	<b>GEND</b>	<b>GENG</b>	<b>GEOL</b>	<b>GMTH</b>	<b>GNGC</b>	<b>GNVG</b>	<b>MEEN</b>	<b>PUNZ</b>	<b>SULG</b>	<b>TRUS</b>	<b>Grand Total</b>
WAG21501	897	4	2987	183		7	316	1168	259		3266	<b>9087</b>
WAK22802	287		677	175			109	72	47		98	<b>1465</b>
WEL18301	5		14					4			2	<b>25</b>
WHG07501	169	2	582	22		2	164	188	17	6	10	<b>1162</b>
WHK32101	29	1	131	10	1	2	239	7	10	1	9	<b>440</b>
WKE19201		1										<b>1</b>
WRK18901	47		118	5		1	22	42	4	4	36	<b>279</b>
WST03610	19595	13	8749	1996	11	71	3628	18203	260	64	2127	<b>54717</b>
WTA16501	1	1	29			5	4	2			2	<b>44</b>
WTG06910	829	2	3819	121		4	440	470	60	4	1062	<b>6811</b>
WTK33901	1101	1	1827	210		1	165	1040	44	8	645	<b>5042</b>
WTR12001	99		399	13		2	386	108	13	1	138	<b>1159</b>
WTT20301						1						<b>1</b>
WVY23601			3					4				<b>7</b>
WKM17701	21		8	1			4	21	2	1	3	<b>61</b>
<b>Grand Total</b>	<b>63613</b>	<b>112</b>	<b>95540</b>	<b>9341</b>	<b>32</b>	<b>351</b>	<b>28934</b>	<b>45242</b>	<b>2751</b>	<b>230</b>	<b>32976</b>	<b>279122</b>