

Gas Registry Statistics – May 2017

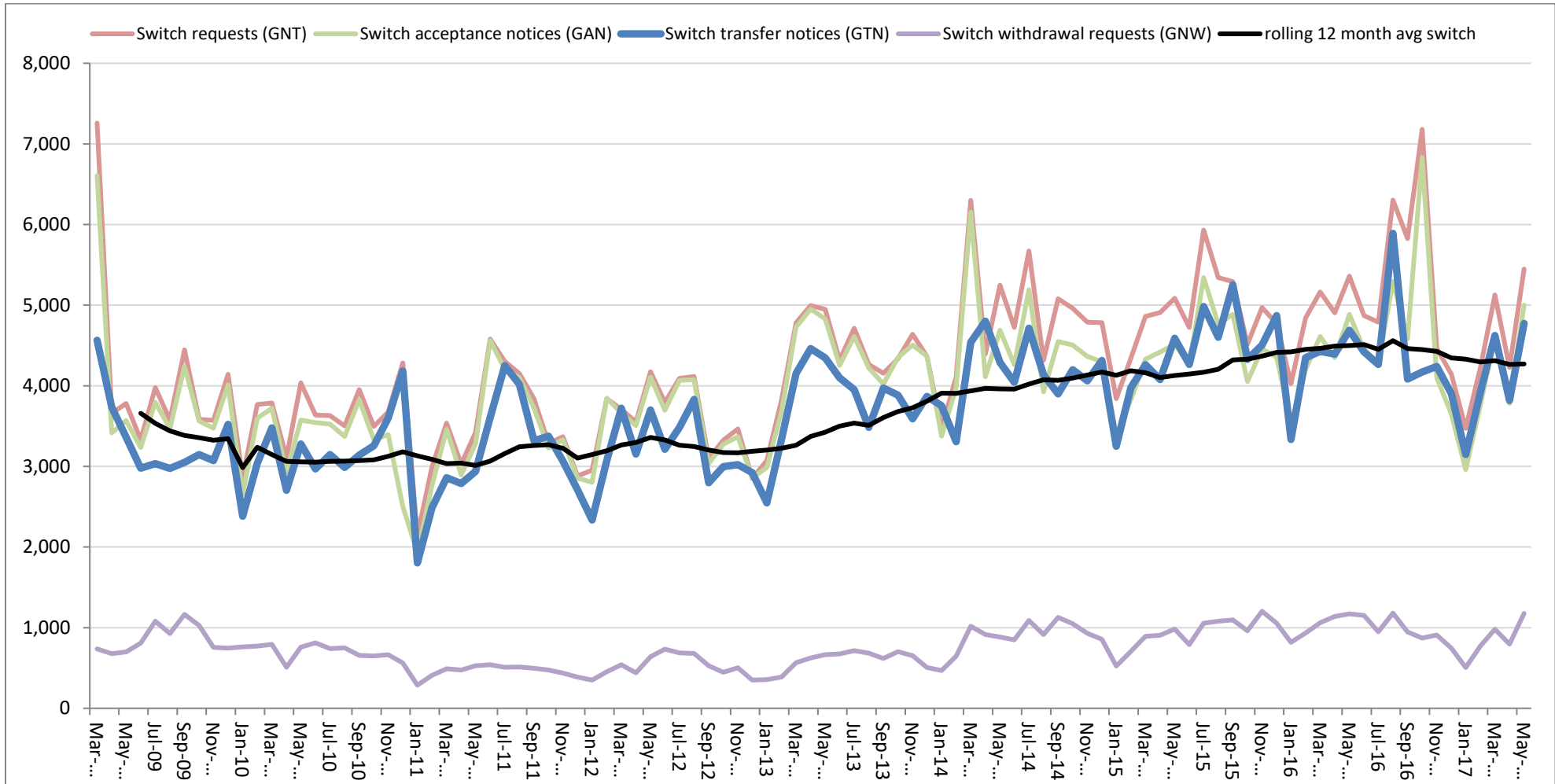
The following report provides statistics and charts illustrating gas registry usage, switching volumes and breakdowns of retailer, distributor and meter owner market shares. The information is provided in accordance with current version of the Determinations by the Industry Body (Gas Industry Co) under the Gas (Switching Arrangements) Rules 2008.

Summary registry statistics – May 2017

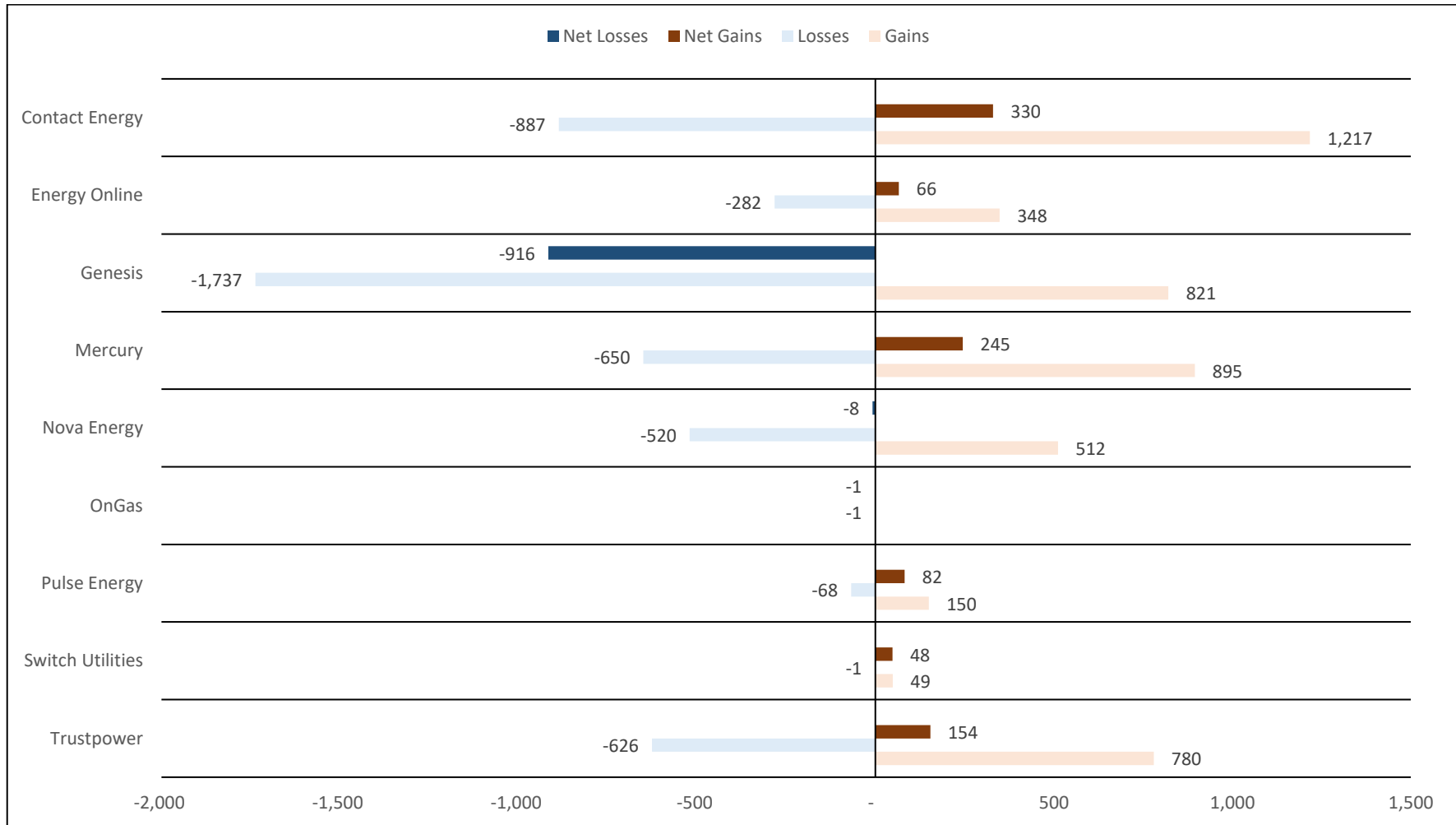
ICP enquiries processed in month (Online)	52,870
ICP enquiries processed in month (Offline)	12,851,216
Total ICP enquiries processed in month	12,904,086
ICPs added to the registry in month	711
ICPs changed in month	2,759
ICPs decommissioned in month	6
Valid standard switch requests (GNT-S) received in month	2,742
Valid move switch requests (GNT-SM) received in month	2,707
Valid switch requests (GNT) received in month	5,449
Valid switch acceptance notices (GAN) received in month	5,001
Valid switch transfer notices (GTN) received in month	4,772
Valid switch withdrawal requests (GNW) received in month	1,177
Valid switch withdrawal acceptances (GAW-A) received in month	1,091
Valid switch withdrawal rejections (GAW-R) received in month	63
Valid switch reading renegotiation requests (GNC) received in month	134
Valid switch reading renegotiation acceptances (GAC-A) received in month	103
Valid switch reading renegotiation rejections (GAC-R) received in month	26

Note: A switch transfer notice (GTN) is the last stage required to complete the switching process. This statistic indicates the number of switches completed in the month.

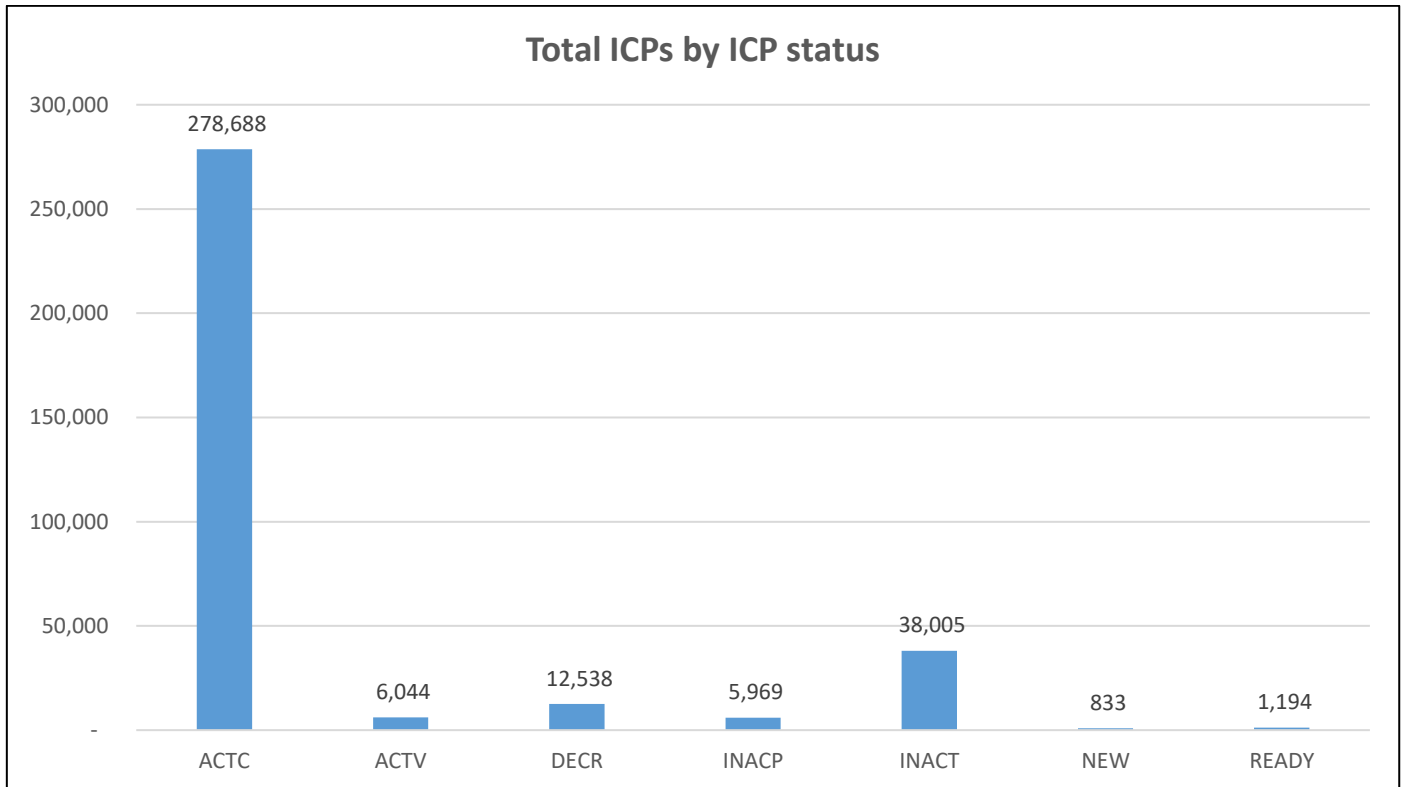
Switching activity – historical



Switching gains and losses – May 2017



ICPs by status – May 2017



Installation control points (ICPs) are the record of customer installations in the gas registry. The meaning of the ICP status codes are as follows:

ACTC—Active contracted (gas is able to flow and the customer has a contract with a retailer)

ACTV—Active vacant (gas is able to flow and the premises is vacant)

DECR—Decommissioned

INACP—Inactive permanent (gas unable to flow due to a permanent disconnection)

INACT—Gas unable to flow due to a temporary disconnection

NEW—Newly created ICP, gas not yet able to flow

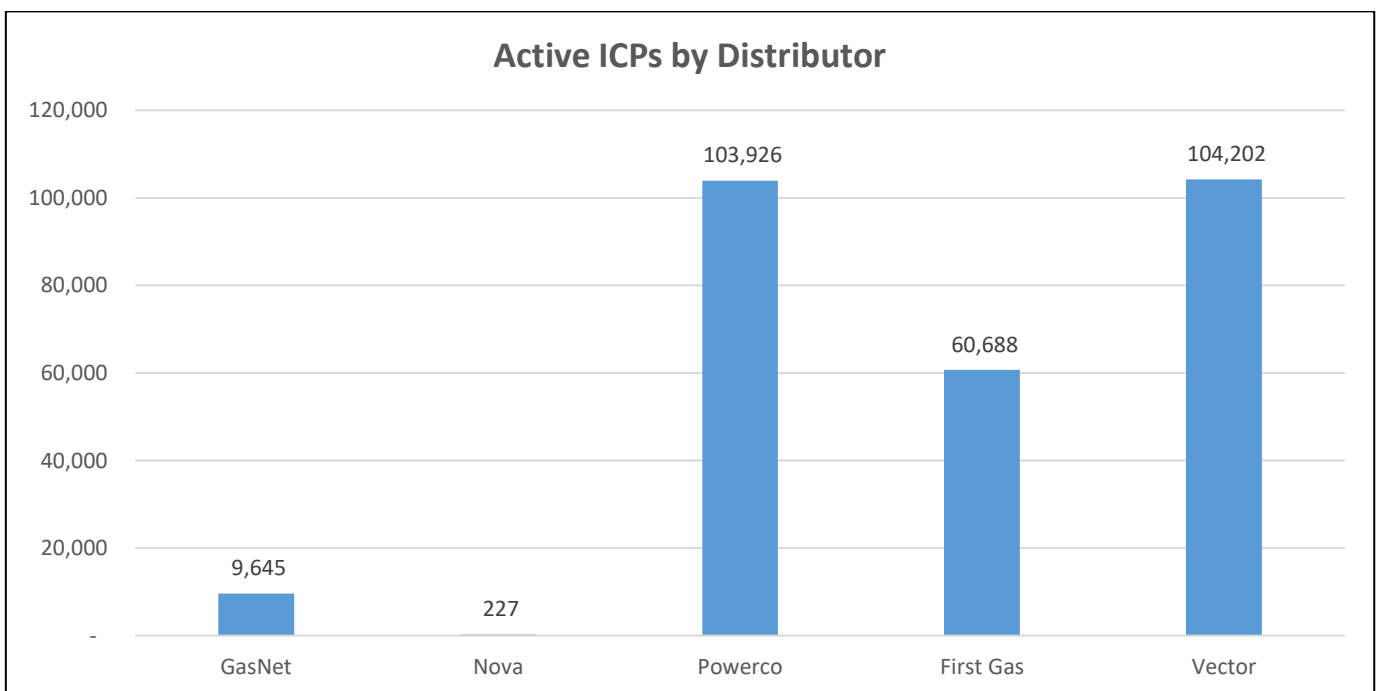
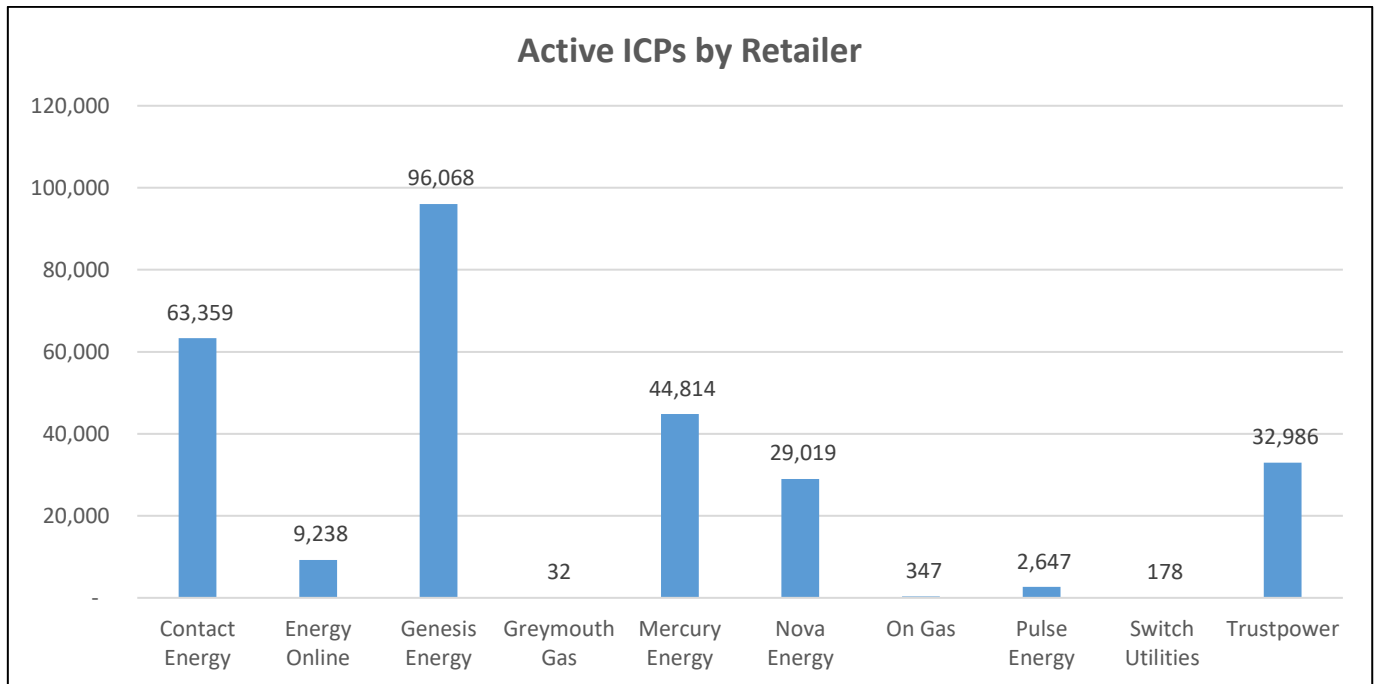
READY—New ICP, gas able to flow, awaiting uplift by retailer

ICPs by status – Historical

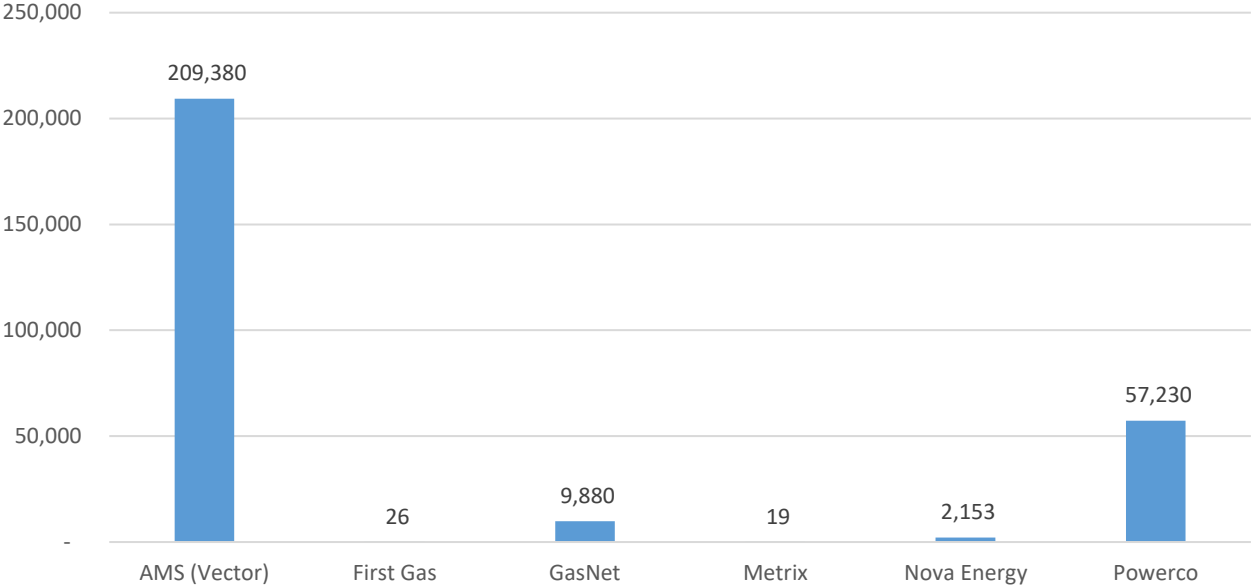


Market shares – May 2017

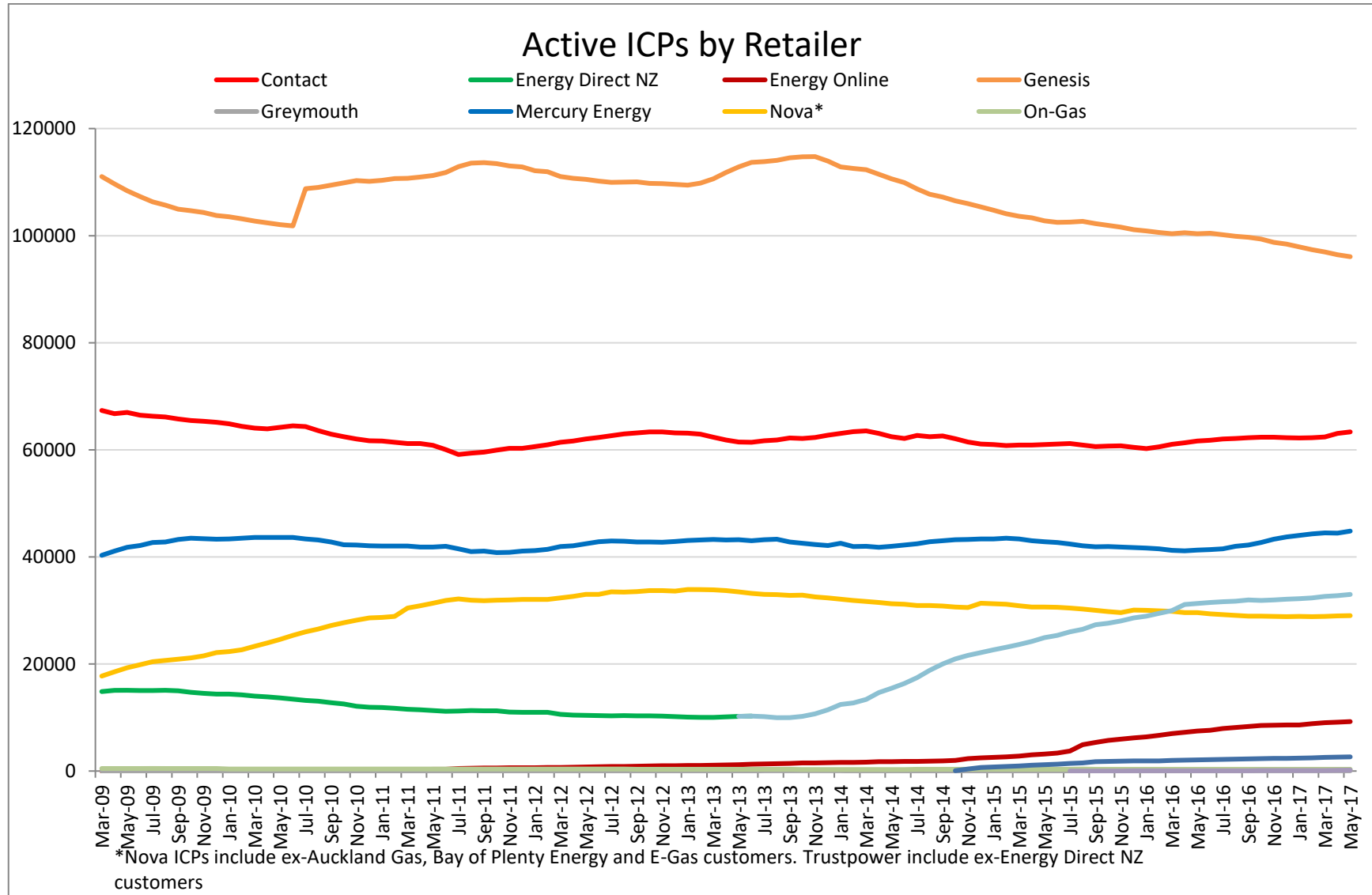
The following charts show the distribution of active-contracted ICPs by retailer, distribution company and meter owner respectively.



Active ICPs by meter owner



Market shares – historical



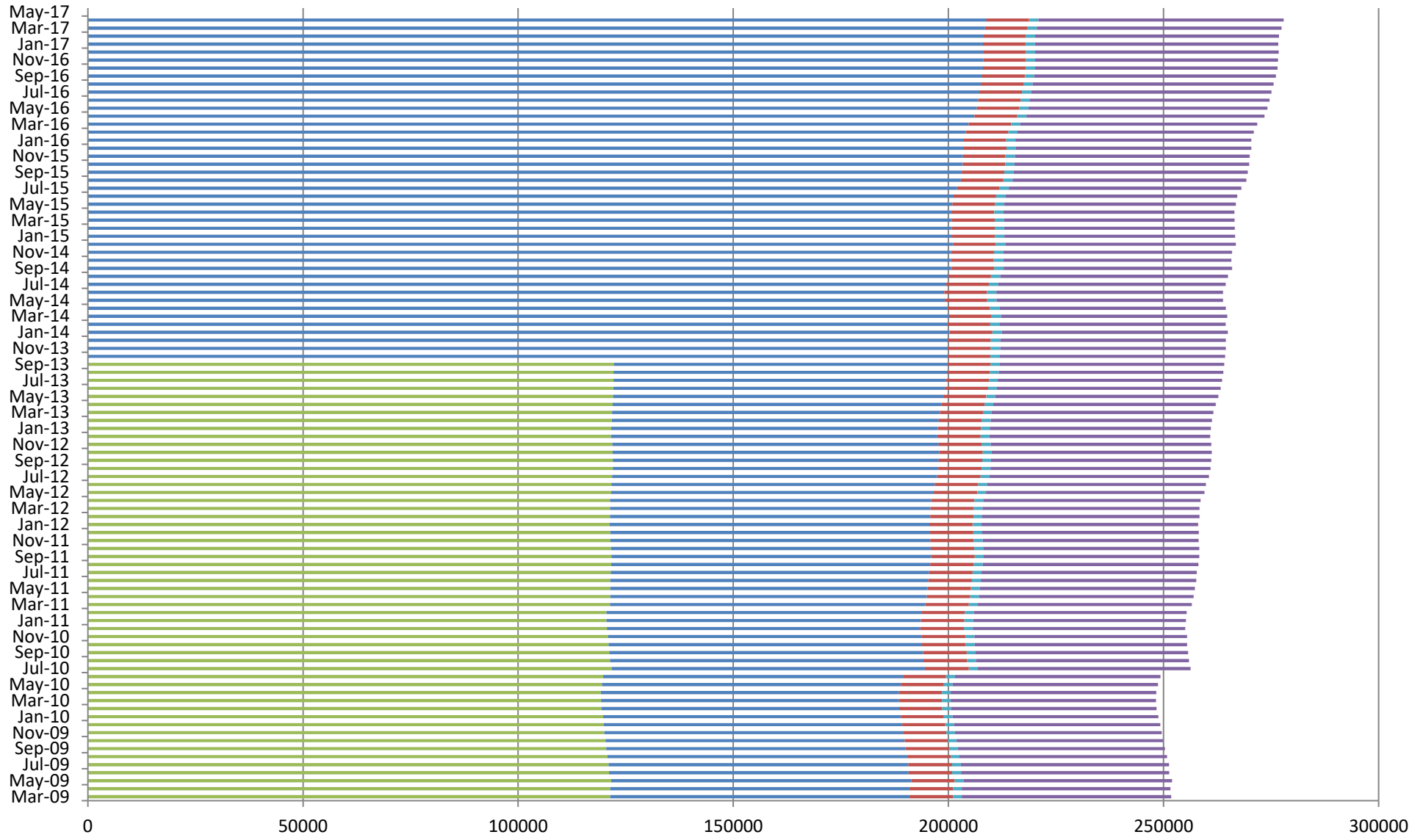
Active ICPs by Distributor

■ GasNet ■ Nova ■ Powerco ■ First Gas ■ Vector



Active ICPs by Meter Owner

■ Contact ■ AMS (Vector) ■ First Gas ■ GasNet ■ Metrix ■ Nova Energy ■ Powerco ■ MDL



Active-contracted ICPs by gas gate and retailer – May 2017

The following table shows the distribution of active-contracted ICPs by gas gate, and the distribution by retailer at each gas gate.

The responsible retailer codes are as follows:

CTCT—Contact Energy

GEND—Genesis Energy (TOU)

GENG—Genesis Energy

GEOL—Energy Online

GMTH—Greymouth Gas

GNGC—OnGas (Vector)

GNVG—Nova Energy

MEEN—Mercury Energy

PUNZ—Pulse Energy

SULG—Switch Utilities

TRUS—Trustpower

The gas gate names associated with the codes used in the table can be found [here](http://gasindustry.co.nz/work-programmes/downstream-reconciliation/operations/gas-gate-information/). <http://gasindustry.co.nz/work-programmes/downstream-reconciliation/operations/gas-gate-information/>

Gas Gate	CTCT	GEND	GENG	GEOL	GMTH	GNGC	GNVG	MEEN	PUNZ	SULG	TRUS	Grand Total
ALF15501						1						1
ASH34301	47		57	5			45	38	3		28	223
BAL08201					1							1
BAL09626					1							1
BEL24510	2537	8	13291	321	1	14	1553	1698	134	13	3217	22787
BMC17901	575	4	570	75		7	185	512	18	2	290	2238
BRO36301							1					1
CAM17201	316		1121	66		2	211	209	17		239	2181
DAN05001	66		11	4		1	24	1			1	108
DRU15101	11		7	1		3	16	6			2	46
EGC30701						1	2					3
EGC30702			3	1		1	4					9
ELM12301	40		134	3		3	69	37	3		26	315
FLB15601							22					22
FLD03001	330	3	490	24	1	1	458	162	21		209	1699
FLH21901	1		1								2	4
FOX22101	105		41	44			53	19	7		8	277
GIS07810	843	4	1297	140	1	2	386	63	106	1	305	3148
GLB03401		1										1
HAR11802			1			5	3					9
HEN74101	7292	8	7832	866	2	22	1261	4893	158	28	2781	25143
HPS02993		1										1
HRU16101		1	2			1						4
HST05203							11					11
HST05210	1957	4	514	808		11	708	310	60	1	334	4707
HTK08301	1081	1	3745	155		2	107	594	43		1138	6866
HTL16601	6	1	74	2		1	11	7	1		14	117
HTV11301	2695	8	12243	611	1	35	477	1494	122	1	3224	20911
HUN15301					1		2					3

Gas Gate	CTCT	GEND	GENG	GEOL	GMTH	GNGC	GNVG	MEEN	PUNZ	SULG	TRUS	Grand Total
HUN15302							2					2
HWA20801	403		1219	46		1	551	331	32		192	2775
HWA20802							1					1
IGW11901	68		212	8			192	56	9		66	611
KAP12901			2			2						4
KAW04405	17		78	4			102	6	19		5	231
KAW04410						1						1
KAW04411						1						1
KIG16801	5		1				1	2				9
KIH19101	8		82	5			8	7			11	121
KIN02601			3				2	1			1	7
KIN04310						1						1
KIW34201					1							1
KIW34202		1			1							2
KKI23701							2					2
KPA12401	8		27	1			13	4			4	57
KRG24101			1				1				1	3
KTK23901		1										1
KUK22401	4		13	4			4				2	27
KUP37503		1										1
KUR33601						1						1
LAB20201	19		33	5			11	9	3		36	116
LCF20010						1						1
LCF20011						1						1
LNB24301	66	2	116	10		4	40	26	1		27	292
LVN24401	1112	2	439	352		3	410	118	46		164	2646
MGK05401					1							1
MMU08001	187	5	1376	83	2	3	386	252	18		1925	4237
MNA23402	26		113	7		1	45	28	6		23	249

Gas Gate	CTCT	GEND	GENG	GEOL	GMTH	GNGC	GNVG	MEEN	PUNZ	SULG	TRUS	Grand Total
MNG34001		1										1
MRV16301			2			1						3
MRV16302	116	1	398	6			70	88	11		33	723
MSD01801							1					1
MSD01802						1						1
MTG17301	2		23					1	1		5	32
MTN23801	53		146	7		1	38	61	11		128	445
MTP20601	1		5				1					7
MUT19001						1						1
NGW14501	21		99	2			2	10		1	31	166
NPL12101	1305	2	4379	186		5	3522	1064	147	3	1125	11738
OKA13201	8		19				24	9			4	64
OKS32801	1							1				2
OKU16701	23		115	4			82	42	1		28	295
OKW23401							1					1
OPK13001	24		82	5			36	30	3		10	190
OPO32001	5		51	3			38		2		4	103
ORD24701	1						1				1	3
OTA22601	74		138	57			53	19	12		29	382
OTO14101	8		137	3			11	1	1		6	167
PAH23101			4									4
PAH23201	13		59				4	5	1		19	101
PAP06610	5622	10	2582	633	4	30	742	5845	136	12	744	16360
PAU20101	731		1493	428		2	341	131	108	1	193	3428
PGH15901			9				1	2			1	13
PGU13101			1					1				2
PHT04901	27		33	2			17	4			1	84
PHT04902						1						1
PIR31101	3		25	2			4	8	2		5	49

Gas Gate	CTCT	GEND	GENG	GEOL	GMTH	GNGC	GNVG	MEEN	PUNZ	SULG	TRUS	Grand Total
PLN24201	3240	3	4328	320		17	3780	1223	248	4	1569	14732
PPA33201	21		116	9			40	25	1		173	385
PTA20901	12		101	3		1	30	15	6		18	186
PTR32601	46		201	6		1	25	37	3		17	336
PUK04201	103	1	41	38		2	70	52		1	17	325
PYE36601	6		10	2			6	4			41	69
RAG33401						1						1
RAM15201	2			2		1	1					6
ROT08101	518		1708	211		11	621	413	172	1	178	3833
RPR30801	2		15			1	3	1			2	24
STR10201	84		439	18			218	90	18		64	931
TAC31001						1						1
TAT16401					1							1
TAU07001	541		923	52		2	351	141	51	4	140	2205
TAW31004	123	1	771	48		3	114	76	14		120	1270
TCC00201	1											1
THO22701	4		7	1				1				13
TIR33501						1						1
TIR33502	14		40	2			10	5	2		2	75
TKN17001	10		129	2			11	1			7	160
TKP05101							1					1
TKR19701	142		576	16		3	88	68	30		64	987
TKS17401		1	3		1		1					6
TPK33301	17		199	10			53	18	5		311	613
TRC02003	1											1
TRG07701	187	1	1393	133		2	520	204	22	2	2178	4642
TTK30601	1		3	1			1					6
TUK06502	3	1	1			1	5	3			1	15
TWA35610	7376	9	10594	654		28	5001	3047	127	29	4009	30874

Gas Gate	CTCT	GEND	GENG	GEOL	GMTH	GNGC	GNVG	MEEN	PUNZ	SULG	TRUS	Grand Total
TWB24810							191					191
WAG21501	890	4	3001	183		7	313	1131	252		3298	9079
WAK22802	289		680	177			111	72	41		98	1468
WEL18301	5		13					4			2	24
WHG07501	173	2	584	22		2	164	188	17	6	10	1168
WHK32101	25	1	129	10	1	2	244	7	10	1	10	440
WKE19201		1										1
WRK18901	46		122	5		1	24	42	4	1	36	281
WST03610	19647	13	8785	1983	11	71	3659	18134	248	58	2123	54732
WTA16501	2	1	28			5	3	2			1	42
WTG06910	823	2	3813	119		4	432	470	60	2	1057	6782
WTK33901	1043	1	1850	210		1	171	1029	41	5	659	5010
WTR12001	98		401	12		2	388	103	12	1	139	1156
WTT20301						1						1
WVY23601	1		3					3				7
Grand Total	63359	112	95956	9238	32	347	29019	44814	2647	178	32986	278688