

# Gas Registry Statistics – April 2017

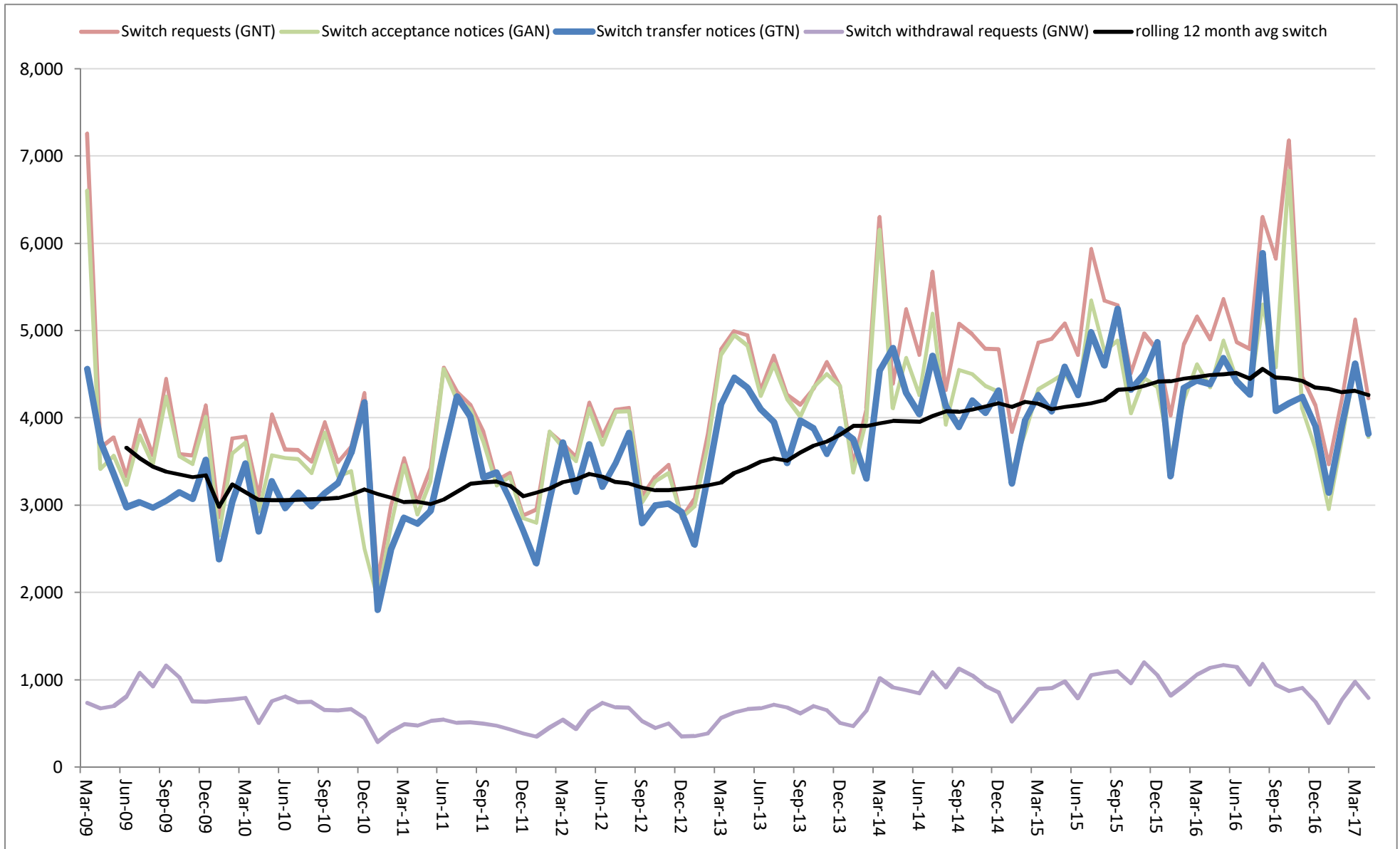
The following report provides statistics and charts illustrating gas registry usage, switching volumes and breakdowns of retailer, distributor and meter owner market shares. The information is provided in accordance with current version of the Determinations by the Industry Body (Gas Industry Co) under the Gas (Switching Arrangements) Rules 2008.

## Summary registry statistics – April 2017

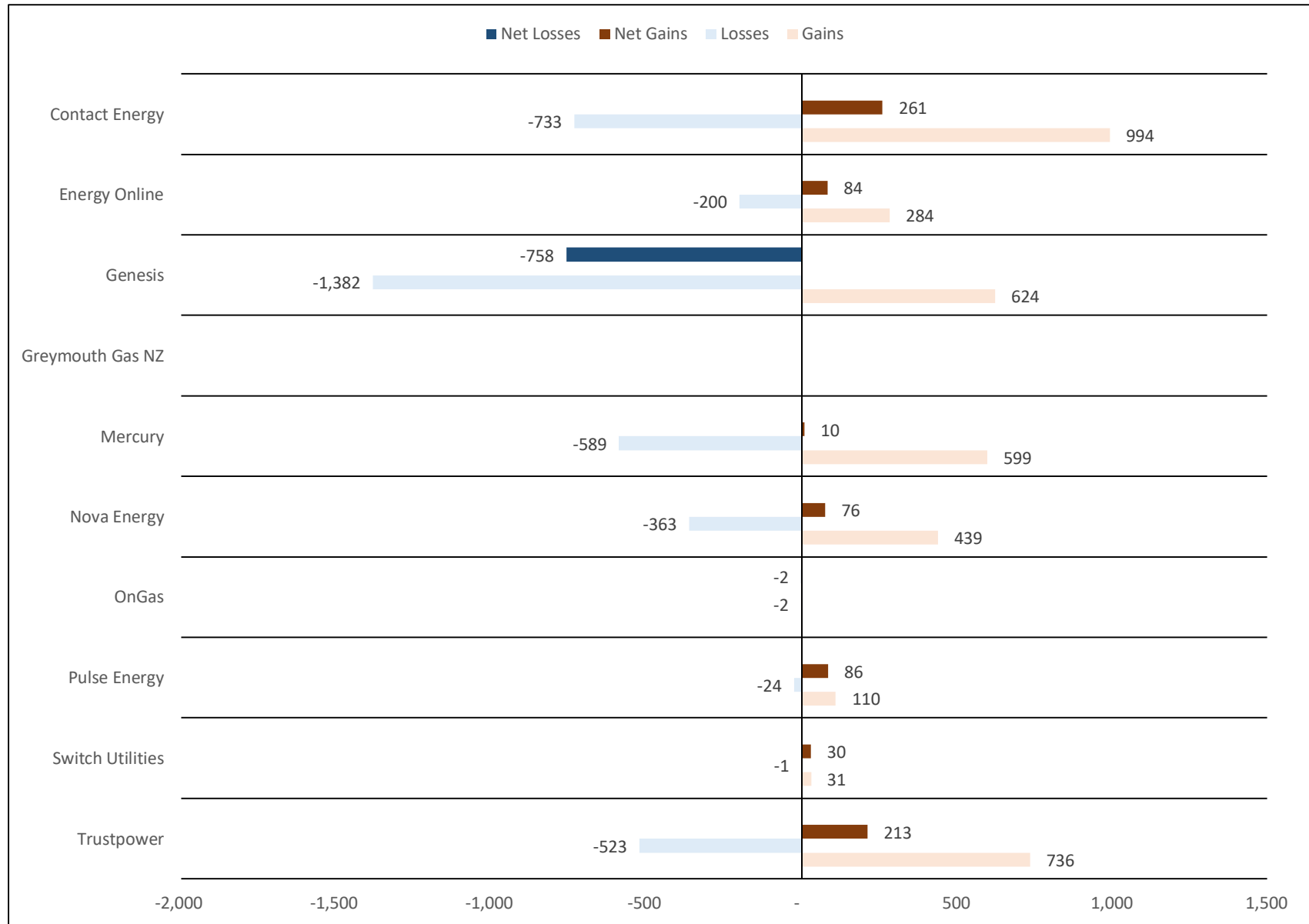
ICP enquiries processed in month (Online)	39,150
ICP enquiries processed in month (Offline)	10,511,578
<b>Total ICP enquiries processed in month</b>	<b>10,550,728</b>
ICPs added to the registry in month	564
ICPs changed in month	2,007
ICPs decommissioned in month	10
Valid standard switch requests (GNT-S) received in month	1,987
Valid move switch requests (GNT-SM) received in month	2,239
<b>Valid switch requests (GNT) received in month</b>	<b>4,226</b>
Valid switch acceptance notices (GAN) received in month	3,781
<b>Valid switch transfer notices (GTN) received in month</b>	<b>3,817</b>
Valid switch withdrawal requests (GNW) received in month	796
Valid switch withdrawal acceptances (GAW-A) received in month	742
Valid switch withdrawal rejections (GAW-R) received in month	54
Valid switch reading renegotiation requests (GNC) received in month	159
Valid switch reading renegotiation acceptances (GAC-A) received in month	141
Valid switch reading renegotiation rejections (GAC-R) received in month	24

Note: A switch transfer notice (GTN) is the last stage required to complete the switching process. This statistic indicates the number of switches completed in the month.

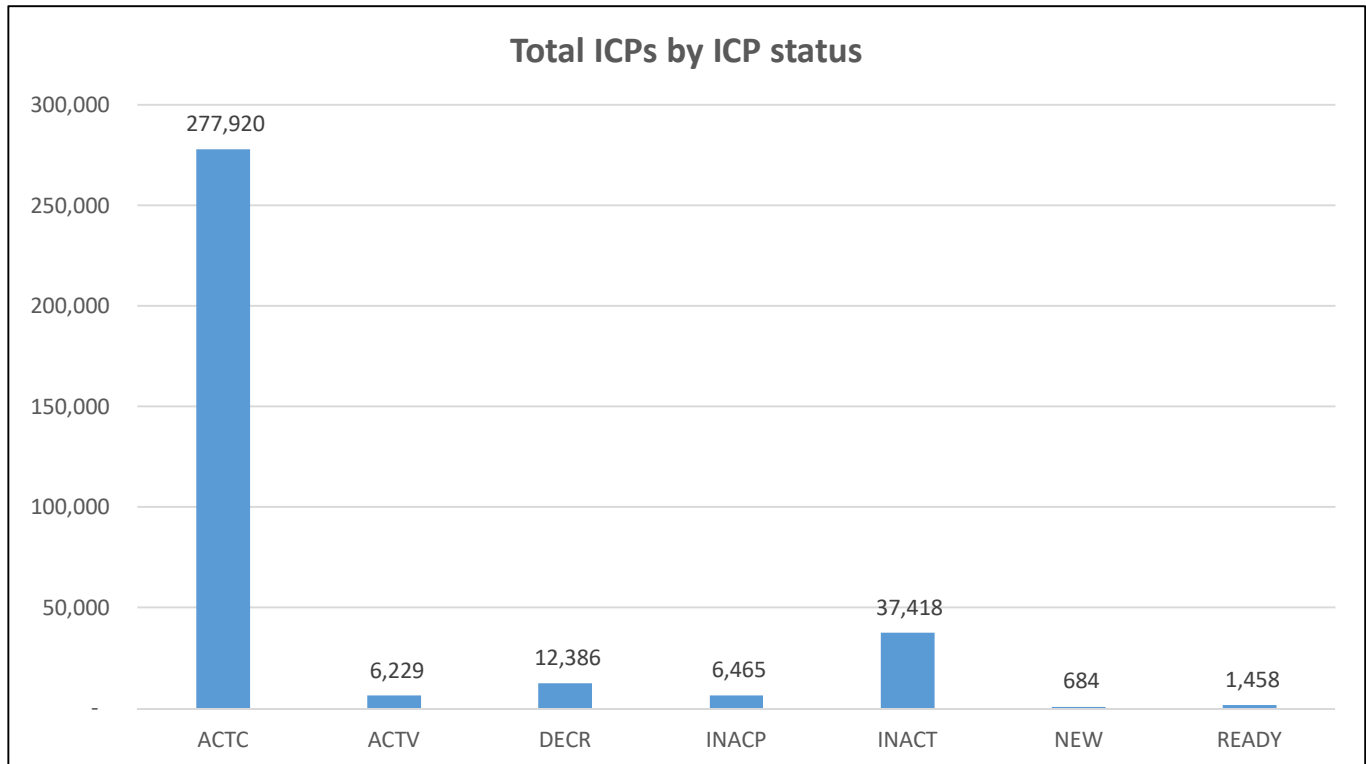
# Switching activity – historical



## Switching gains and losses – April 2017



## ICPs by status – April 2017



Installation control points (ICPs) are the record of customer installations in the gas registry. The meaning of the ICP status codes are as follows:

**ACTC**—Active contracted (gas is able to flow and the customer has a contract with a retailer)

**ACTV**—Active vacant (gas is able to flow and the premises is vacant)

**DECR**—Decommissioned

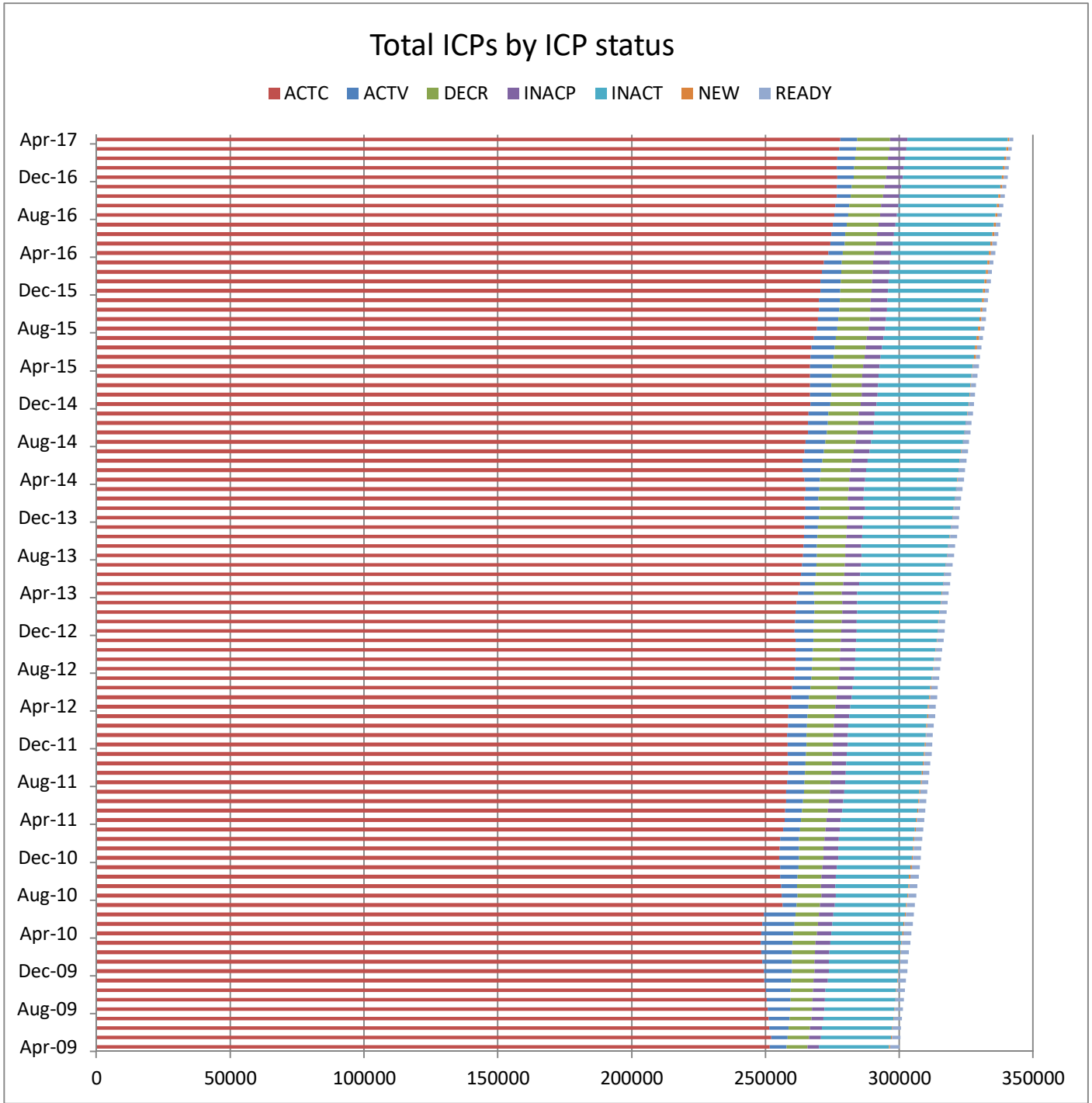
**INACP**—Inactive permanent (gas unable to flow due to a permanent disconnection)

**INACT**—Gas unable to flow due to a temporary disconnection

**NEW**—Newly created ICP, gas not yet able to flow

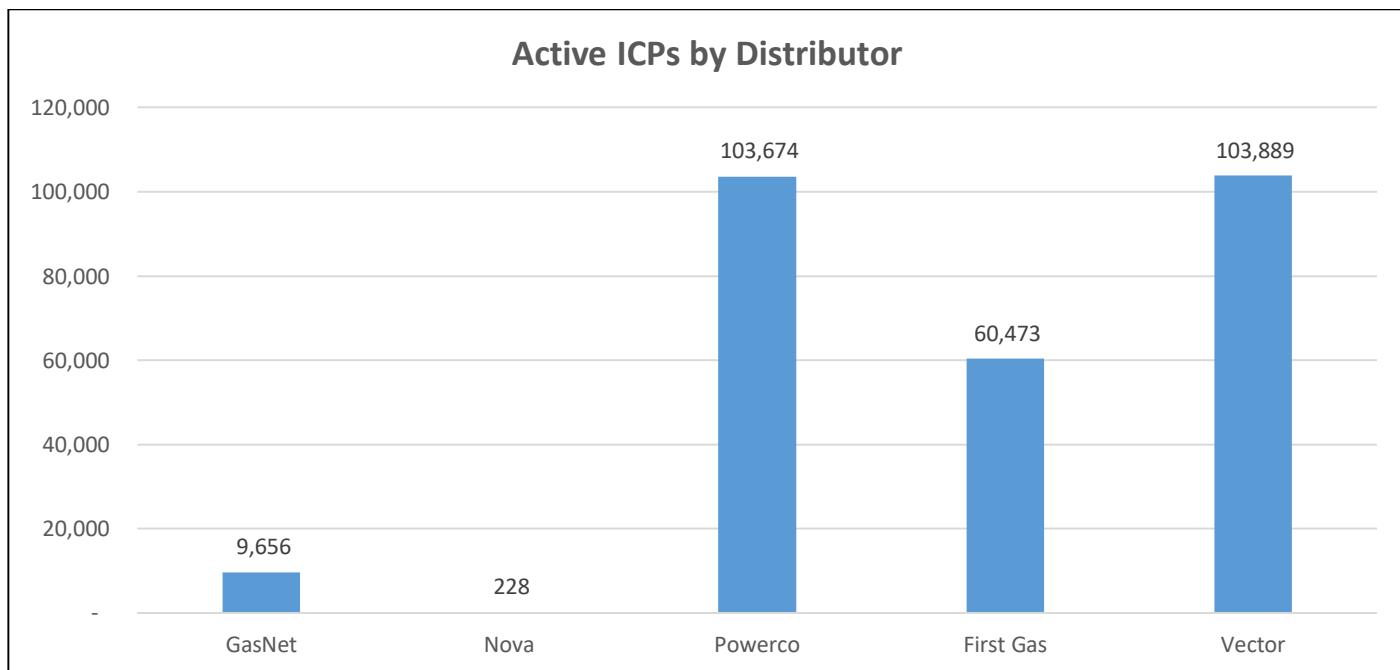
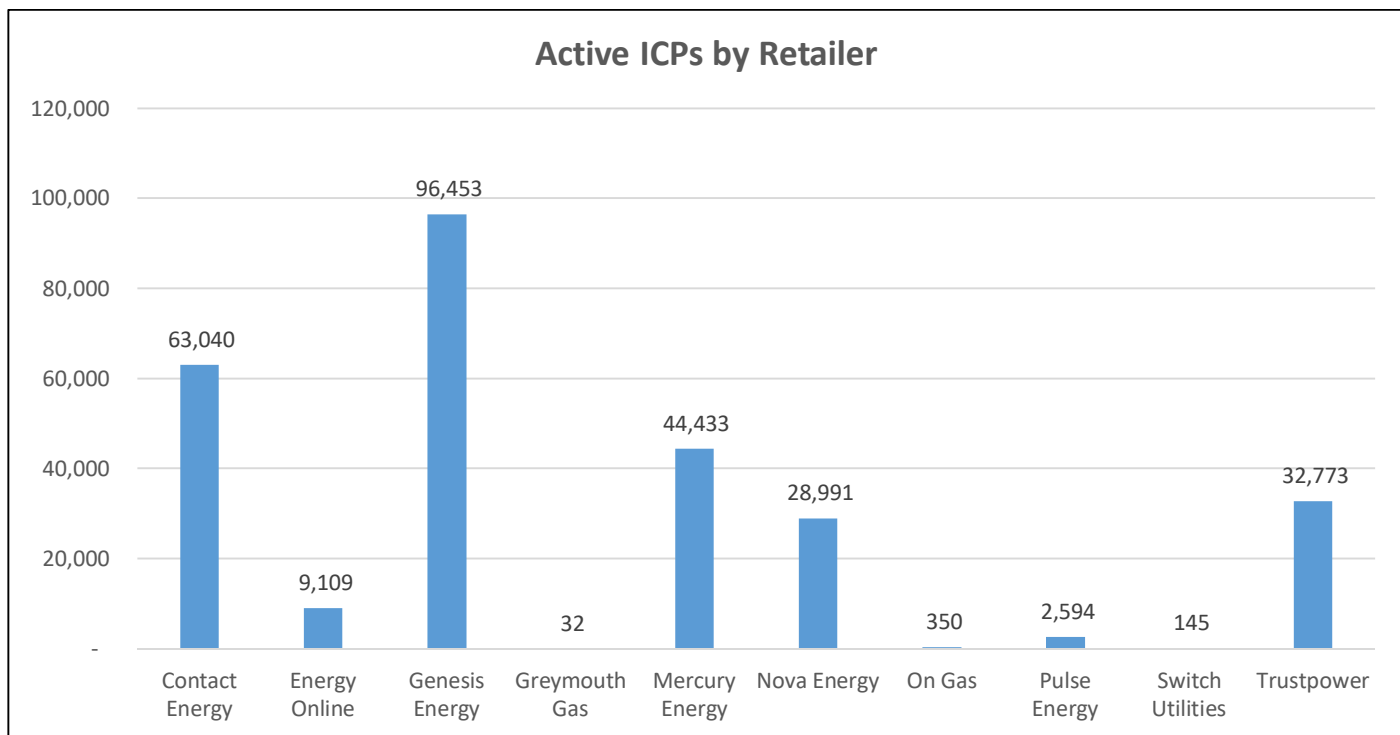
**READY**—New ICP, gas able to flow, awaiting uplift by retailer

# ICPs by status – Historical

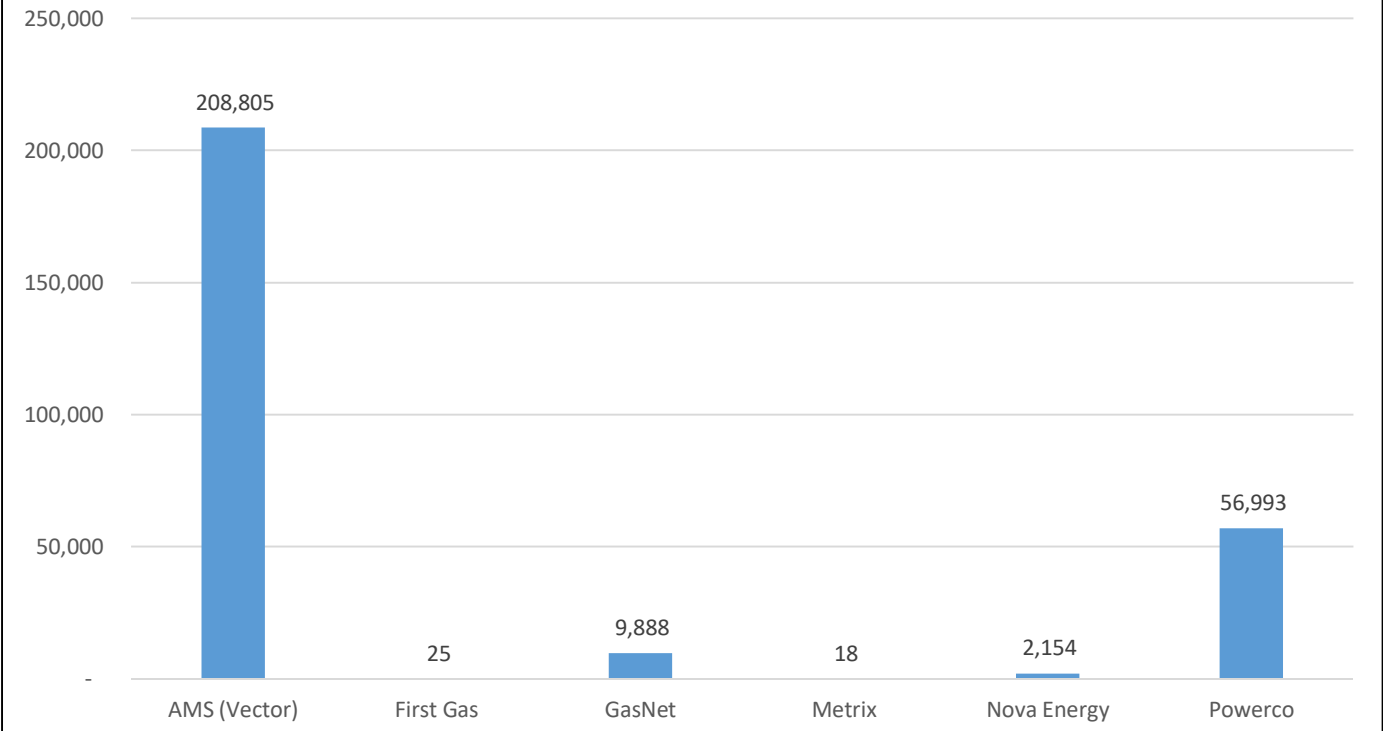


## Market shares – April 2017

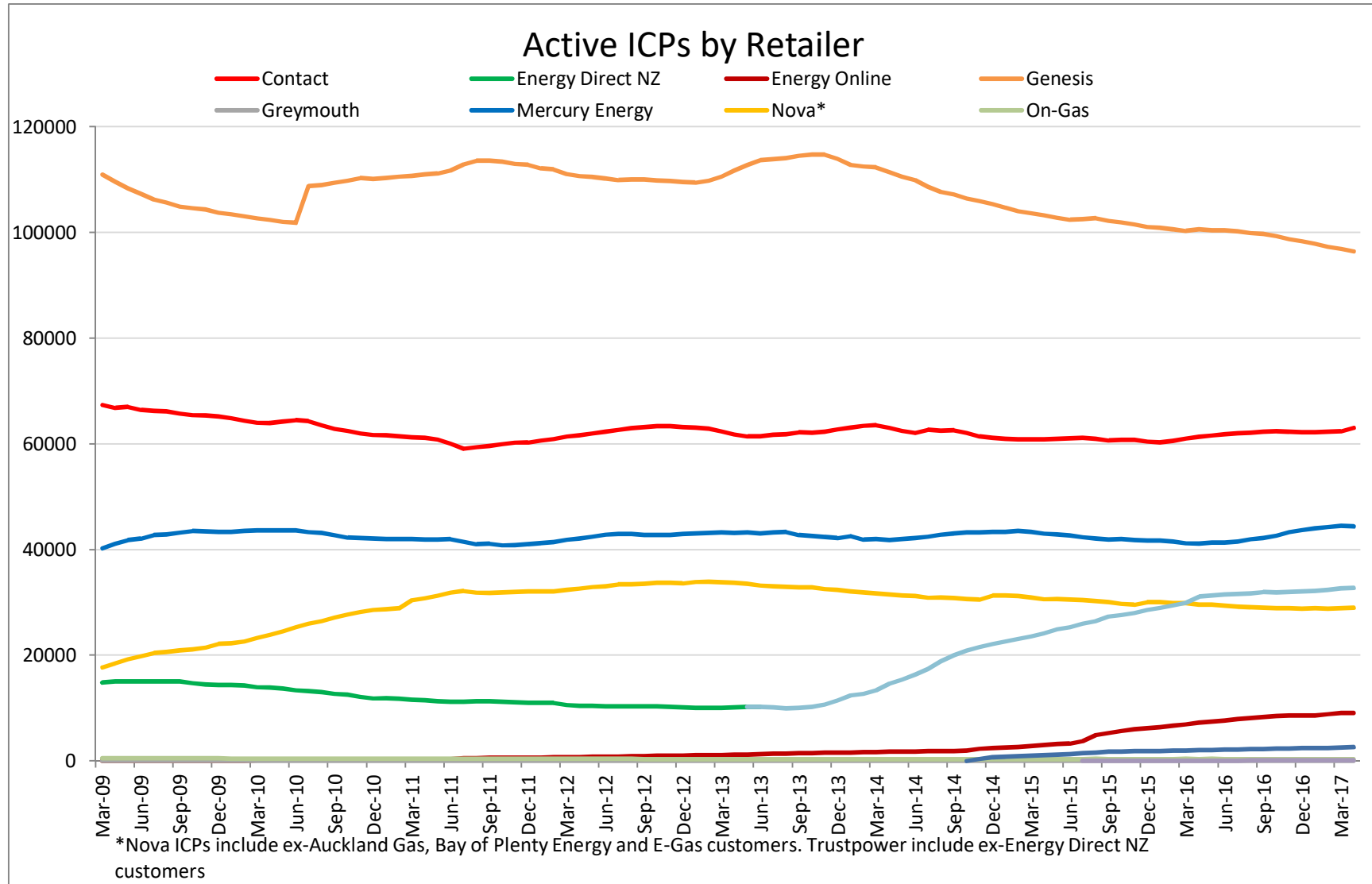
The following charts show the distribution of active-contracted ICPs by retailer, distribution company and meter owner respectively.



### Active ICPs by meter owner



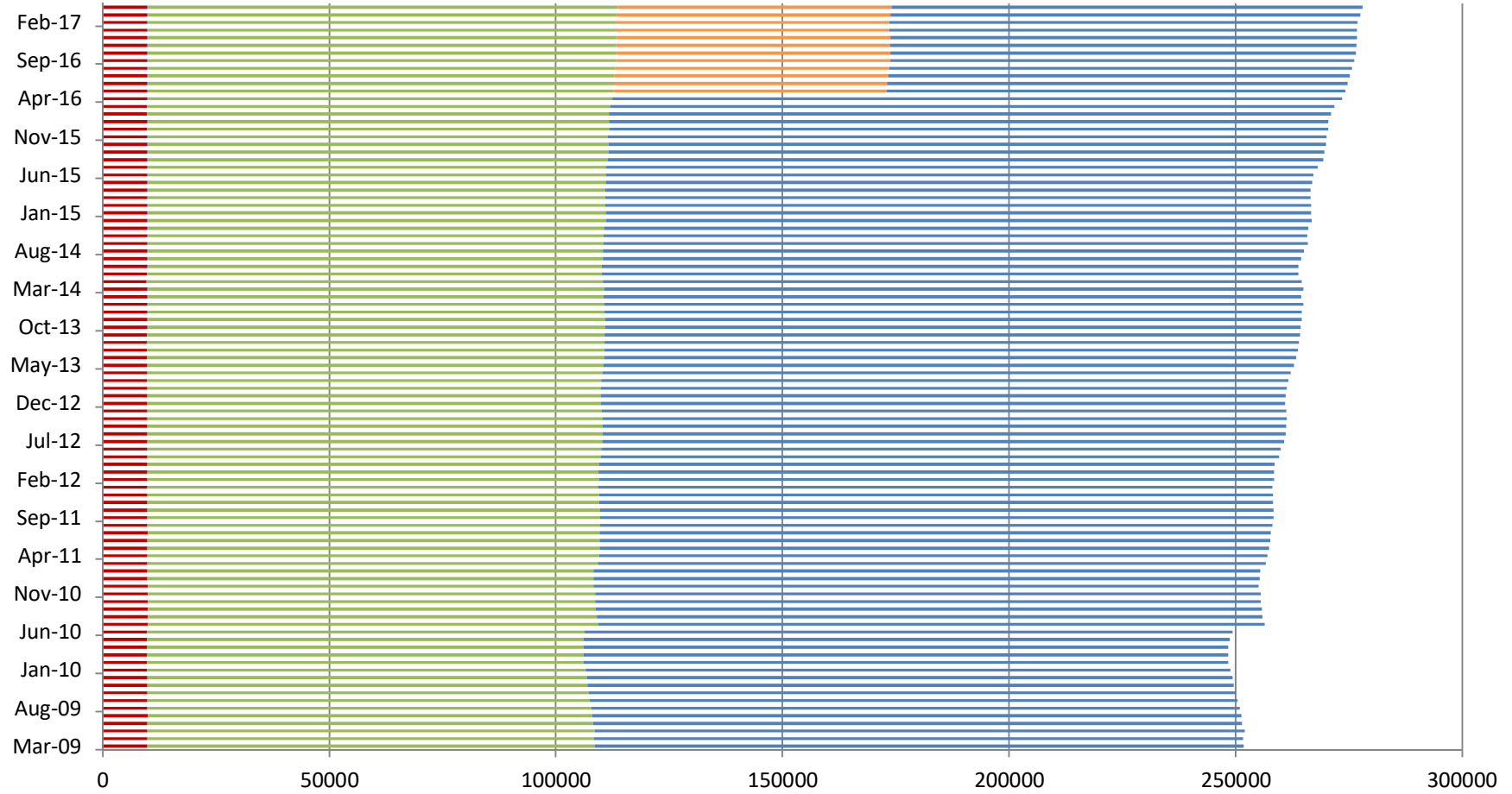
# Market shares – historical





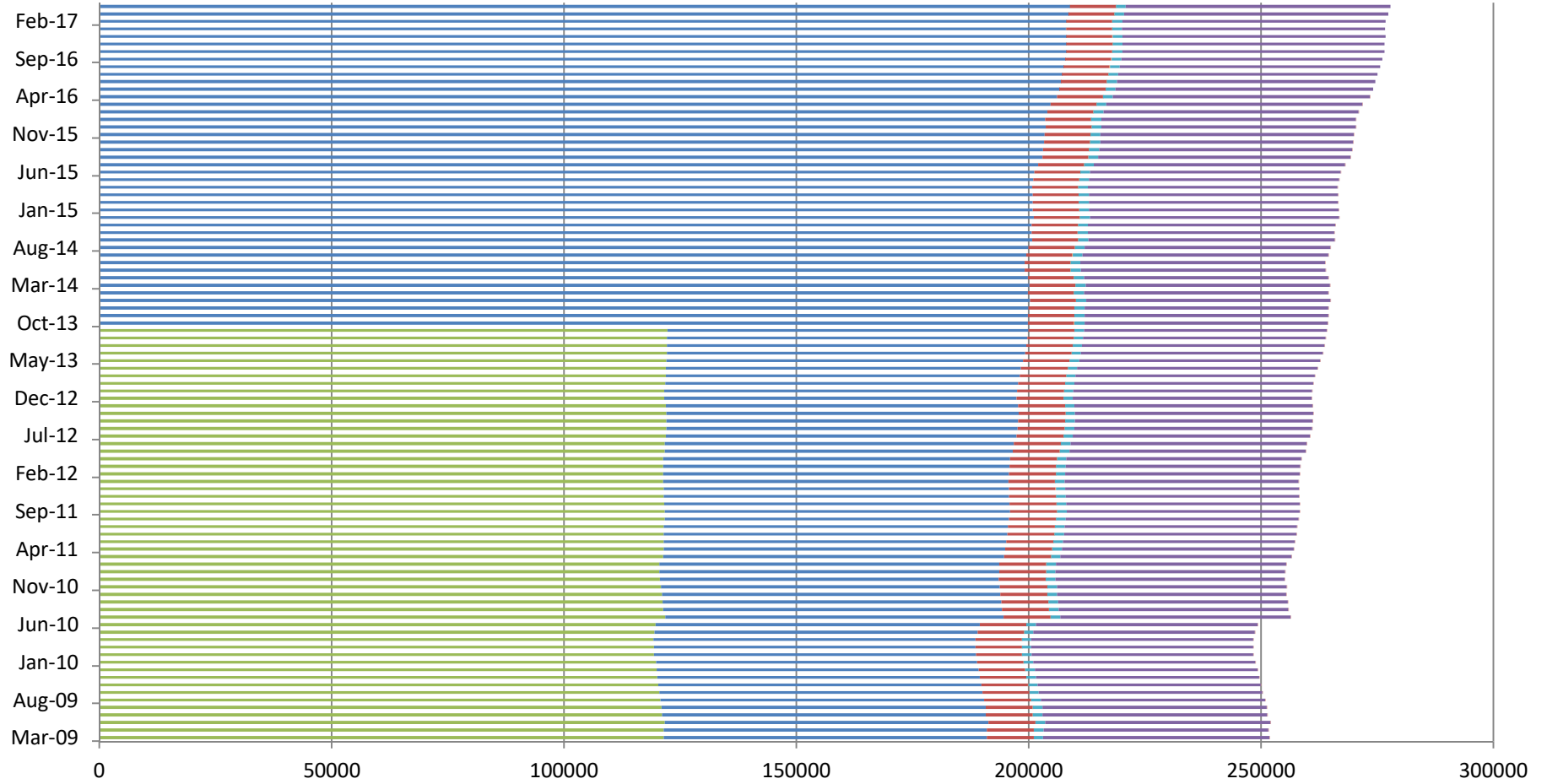
# Active ICPs by Distributor

■ GasNet ■ Nova ■ Powerco ■ First Gas ■ Vector



# Active ICPs by Meter Owner

■ Contact ■ AMS (Vector) ■ First Gas ■ GasNet ■ Metrix ■ Nova Energy ■ Powerco ■ MDL



## **Active-contracted ICPs by gas gate and retailer – April 2017**

The following table shows the distribution of active-contracted ICPs by gas gate, and the distribution by retailer at each gas gate.

The responsible retailer codes are as follows:

CTCT—Contact Energy

GEND—Genesis Energy (TOU)

GENG—Genesis Energy

GEOL—Energy Online

GMTH—Greymouth Gas

GNGC—OnGas (Vector)

GNVG—Nova Energy

MEEN—Mercury Energy

PUNZ—Pulse Energy

SULG—Switch Utilities

TRUS—Trustpower

The gas gate names associated with the codes used in the table can be found [here](http://gasindustry.co.nz/work-programmes/downstream-reconciliation/operations/#gas-gate-information/). <http://gasindustry.co.nz/work-programmes/downstream-reconciliation/operations/#gas-gate-information/>

Gas Gate	CTCT	GEND	GENG	GEOL	GMTH	GNGC	GNVG	MEEN	PUNZ	SULG	TRUS	Grand Total
ALF15501						1						1
ASH34301	47		58	6			42	38	3		29	223
BAL08201					1							1
BAL09626					1							1
BEL24510	2518	8	13354	306	1	14	1544	1677	134	7	3182	22745
BMC17901	576	4	568	72		7	190	506	16	1	293	2233
BRO36301							1					1
CAM17201	291		1118	69		2	214	209	17		237	2157
DAN05001	68		12	4		1	24				1	110
DRU15101	5		7	1		3	17	6			2	41
EGC30701						1	2					3
EGC30702			3	1		1	3					8
ELM12301	40		137	3		3	70	34	3		27	317
FLB15601							22					22
FLD03001	333	3	503	25	1	1	434	164	21		205	1690
FLH21901	1		2								2	5
FOX22101	103		43	43			53	18	8		8	276
GIS07810	840	4	1321	136	1	2	377	59	105	1	300	3146
GLB03401		1										1
HAR11802			1			5	3					9
HEN74101	7252	8	7825	870	2	22	1265	4873	157	27	2734	25035
HPS02993		1										1
HRU16101		1	1			1						3
HST05203							11					11
HST05210	1962	4	518	790		12	706	309	60	1	340	4702
HTK08301	1019	1	3780	148		2	104	595	44		1145	6838
HTL16601	8	1	73	2		1	11	7	1		14	118
HTV11301	2678	9	12294	593	1	35	474	1463	119	2	3168	20836
HUN15301					1		2					3

Gas Gate	CTCT	GEND	GENG	GEOL	GMTH	GNGC	GNVG	MEEN	PUNZ	SULG	TRUS	Grand Total
HUN15302							2					2
HWA20801	402		1220	47		1	557	308	31		188	2754
HWA20802							1					1
IGW11901	66		215	8			188	53	9		67	606
KAP12901			2			2						4
KAW04405	17		76	3			102	6	20		6	230
KAW04410						1						1
KAW04411						1						1
KIG16801	5		1				1	2				9
KIH19101	8		80	5			8	7			10	118
KIN02601			3				2	1			1	7
KIN04310						1						1
KIW34201					1							1
KIW34202		1			1							2
KKI23701							2					2
KPA12401	8		27	2			13	3			4	57
KRG24101							1				1	2
KTK23901		1										1
KUK22401	4		13	4			4				2	27
KUP37503		1										1
KUR33601						1						1
LAB20201	20		34	5			8	10	3		36	116
LCF20010						1						1
LCF20011						1						1
LNB24301	64	2	122	9		4	38	23	1		24	287
LVN24401	1111	2	447	354		3	414	120	46		160	2657
MGK05401					1							1
MMU08001	181	5	1379	76	2	3	392	246	18		1919	4221
MNA23402	26		112	7		1	43	28	6		24	247

Gas Gate	CTCT	GEND	GENG	GEOL	GMTH	GNGC	GNVG	MEEN	PUNZ	SULG	TRUS	Grand Total
MNG34001		1										1
MRV16301			2			1						3
MRV16302	111	1	395	4			69	89	10		34	713
MSD01801							1					1
MSD01802						1						1
MTG17301	2		20					1	1		5	29
MTN23801	56		148	8		1	32	63	11		128	447
MTP20601	1		5				1					7
MUT19001						1						1
NGW14501	21		98	2			2	10		1	31	165
NPL12101	1311	2	4400	188		5	3539	996	144	1	1120	11706
OKA13201	7		20				23	9			3	62
OKS32801	1							1				2
OKU16701	22		115	3			79	40	1		28	288
OKW23401							1					1
OPK13001	26		87	4			36	27	1		10	191
OPO32001	4		49	3			40		2		4	102
ORD24701	1						1				1	3
OTA22601	75		141	55			54	19	12		28	384
OTO14101	8		135	3			11	1	1		6	165
PAH23101			4									4
PAH23201	13		56				4	4	1		19	97
PAP06610	5599	10	2603	625	4	31	746	5816	129	5	729	16297
PAU20101	733		1497	421		2	341	131	107	1	192	3425
PGH15901			10				1	2			1	14
PGU13101			1					1				2
PHT04901	27		36	2			16	4				85
PHT04902						1						1
PIR31101	3		25	2			4	8	2		5	49

Gas Gate	CTCT	GEND	GENG	GEOL	GMTH	GNGC	GNVG	MEEN	PUNZ	SULG	TRUS	Grand Total
PLN24201	3166	3	4399	323		17	3804	1250	246	3	1506	14717
PPA33201	21		114	9			41	23	1		165	374
PTA20901	14		101	3		1	30	15	6		17	187
PTR32601	46		203	6		1	25	36	3		17	337
PUK04201	103	1	42	39		2	72	48	1		16	324
PYE36601	5		7	3			6	4			37	62
RAG33401						1						1
RAM15201	2			2		1	1					6
ROT08101	514		1710	211		11	627	404	171		177	3825
RPR30801	2		16			1	3	1			2	25
STR10201	84		433	19			217	85	18		65	921
TAC31001						1						1
TAT16401					1							1
TAU07001	540		934	52		2	351	134	49	2	138	2202
TAW31004	123	1	773	48		3	113	77	14		117	1269
TCC00201	1											1
THO22701	4		7	1				1				13
TIR33501						1						1
TIR33502	14		40	2			10	5	2		2	75
TKN17001	10		130	2			11	1			7	161
TKPO5101							1					1
TKR19701	141		581	13		3	87	63	28		64	980
TKS17401		1	3		1		1					6
TPK33301	16		200	10			52	18	5		312	613
TRC02003	1											1
TRG07701	184	1	1398	134		2	526	199	23	1	2167	4635
TTK30601	1		3	1			1					6
TUK06502	3	1	1			1	5	3			1	15
TWA35610	7360	9	10573	633		29	4960	3030	128	26	4035	30783

Gas Gate	CTCT	GEND	GENG	GEOL	GMTH	GNGC	GNVG	MEEN	PUNZ	SULG	TRUS	Grand Total
TWB24810							192					192
WAG21501	896	4	3055	178		7	284	1105	245		3313	9087
WAK22801							1					1
WAK22802	283		684	174			108	73	40		98	1460
WEL18301	5		13	1				4			2	25
WHG07501	172	2	588	20		2	163	191	17	5	8	1168
WHK32101	25	1	130	10	1	2	245	7	10		10	441
WKE19201		1										1
WRK18901	46		122	5		1	25	40	3	1	36	279
WST03610	19654	13	8788	1976	11	71	3688	18069	226	54	2124	54674
WTA16501	2	1	29			5	3	1			1	42
WTG06910	810	2	3815	112		4	427	469	62	1	1066	6768
WTK33901	1025	1	1843	202		1	168	997	40	5	656	4938
WTR12001	92		406	11		2	397	90	12		141	1151
WTT20301						1						1
WVY23601	1		3					3				7
<b>Grand Total</b>	<b>63040</b>	<b>113</b>	<b>96340</b>	<b>9109</b>	<b>32</b>	<b>350</b>	<b>28991</b>	<b>44433</b>	<b>2594</b>	<b>145</b>	<b>32773</b>	<b>277920</b>