

# Gas Registry Statistics – March 2017

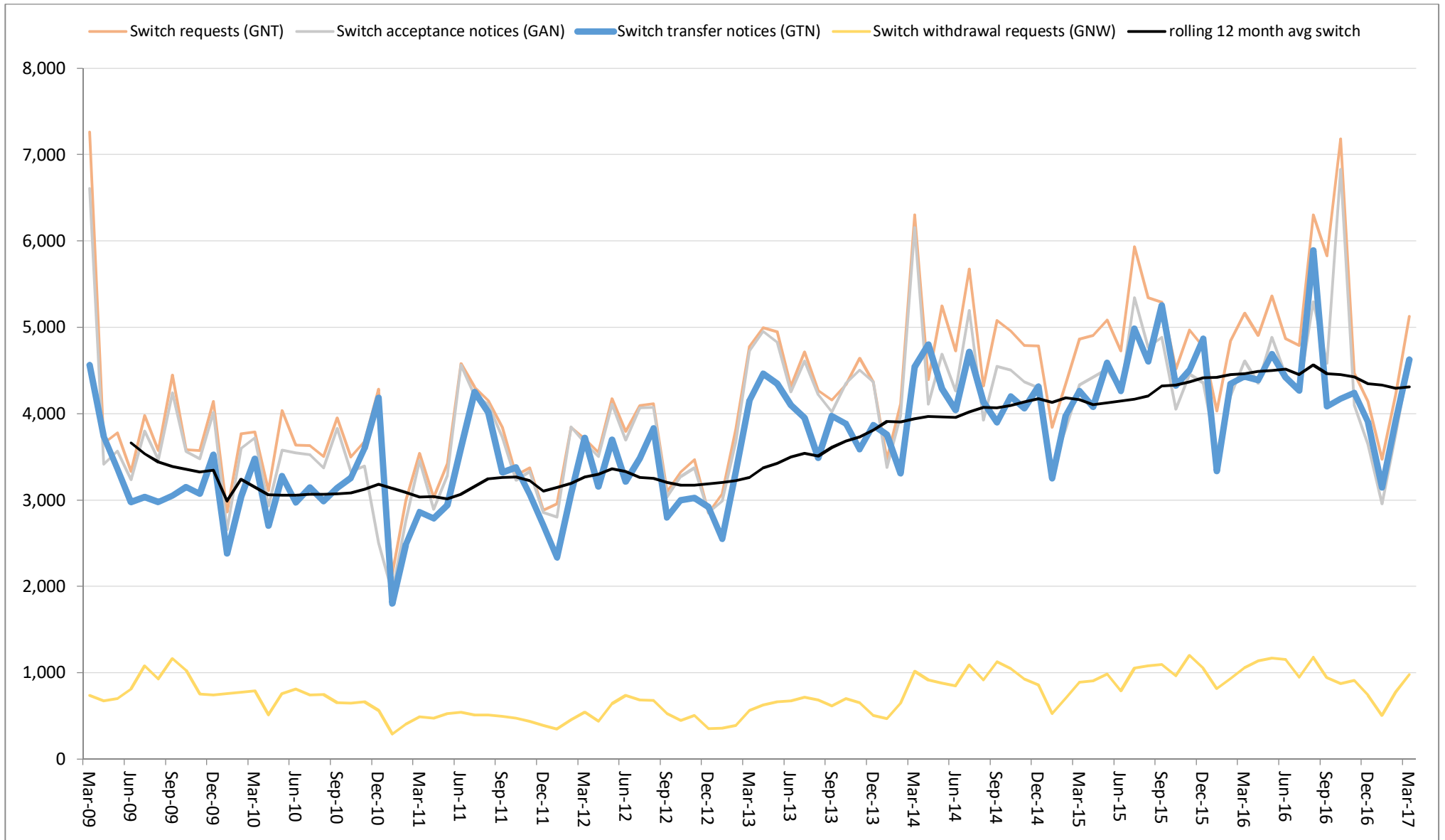
The following report provides statistics and charts illustrating gas registry usage, switching volumes and breakdowns of retailer, distributor and meter owner market shares. The information is provided in accordance with version 1.2 of the Determinations by the Industry Body (Gas Industry Co) under the Gas (Switching Arrangements) Rules 2008, dated 20 February 2009.

## Summary registry statistics – March 2017

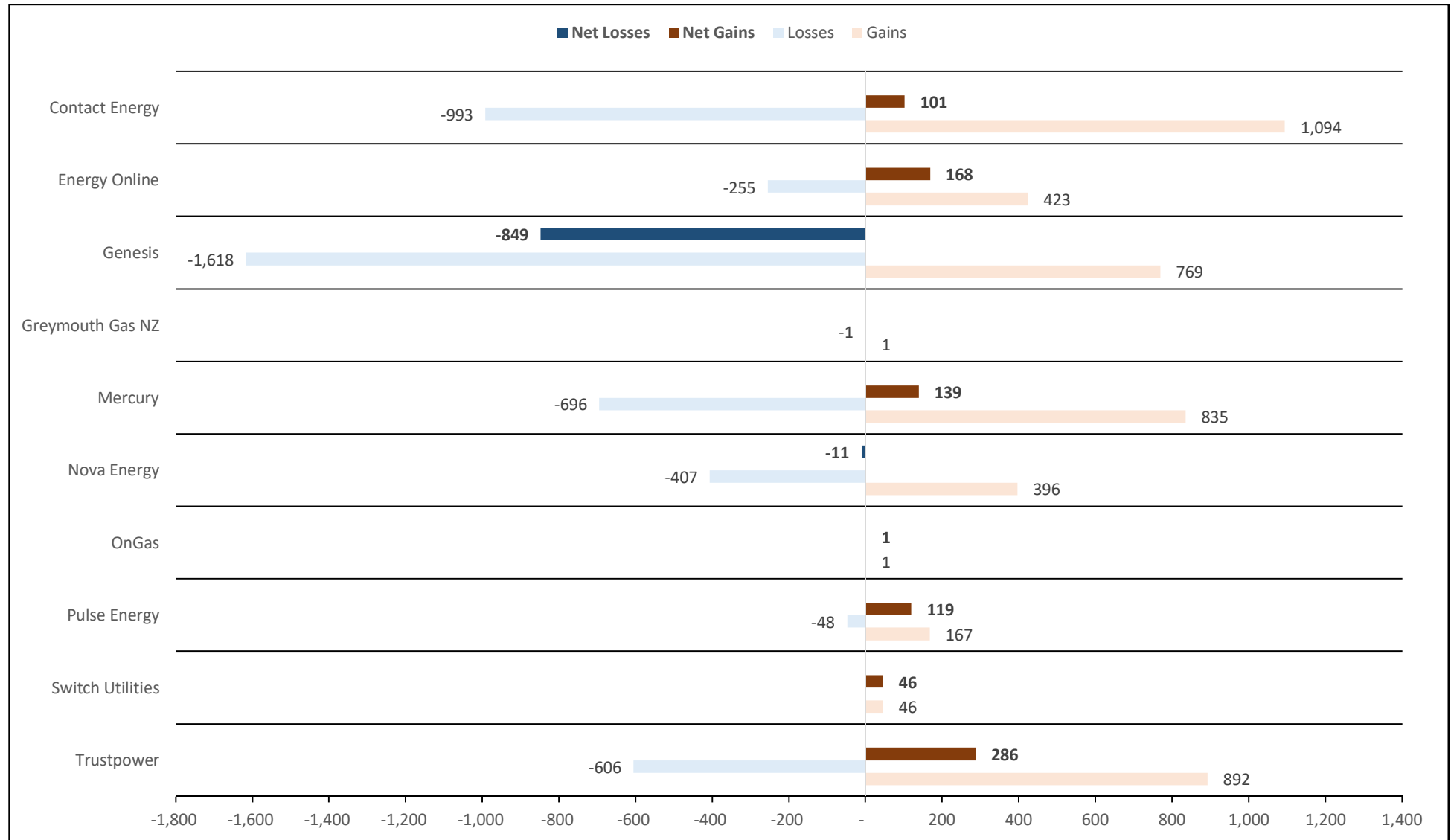
ICP enquiries processed in month (Online)	48,967
ICP enquiries processed in month (Offline)	12,141,957
<b>Total ICP enquiries processed in month</b>	<b>12,190,924</b>
ICPs added to the registry in month	655
ICPs changed in month	1,865
ICPs decommissioned in month	8
Valid standard switch requests (GNT-S) received in month	2,525
Valid move switch requests (GNT-SM) received in month	2,600
<b>Valid switch requests (GNT) received in month</b>	<b>5,125</b>
Valid switch acceptance notices (GAN) received in month	4,613
<b>Valid switch transfer notices (GTN) received in month</b>	<b>4,624</b>
Valid switch withdrawal requests (GNW) received in month	979
Valid switch withdrawal acceptances (GAW-A) received in month	907
Valid switch withdrawal rejections (GAW-R) received in month	75
Valid switch reading renegotiation requests (GNC) received in month	232
Valid switch reading renegotiation acceptances (GAC-A) received in month	200
Valid switch reading renegotiation rejections (GAC-R) received in month	33

Note: A switch transfer notice (GTN) is the last stage required to complete the switching process. This statistic indicates the number of switches completed in the month.

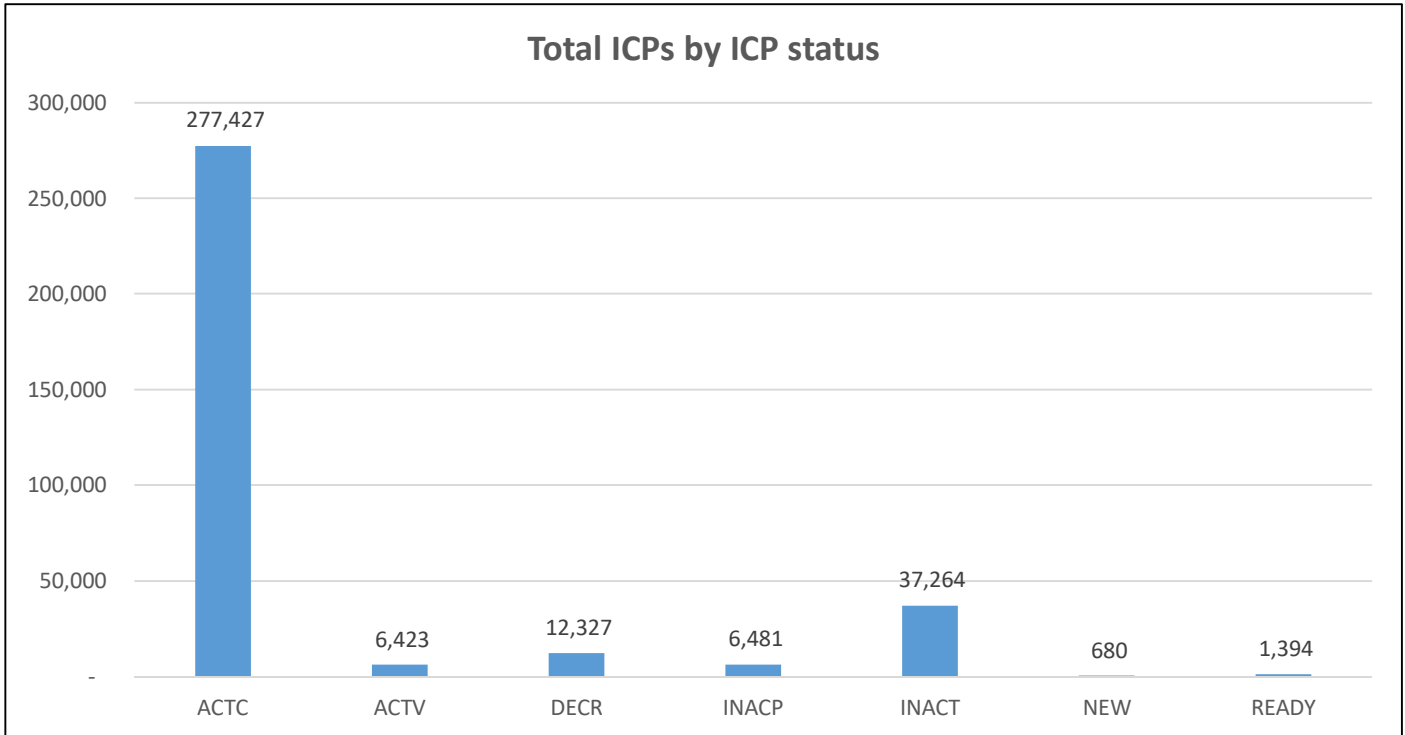
# Switching activity – historical



## Switching gains and losses – March 2017



## ICPs by status – March 2017



Installation control points (ICPs) are the record of customer installations in the gas registry. The meaning of the ICP status codes are as follows:

**ACTC**—Active contracted (gas is able to flow and the customer has a contract with a retailer)

**ACTV**—Active vacant (gas is able to flow and the premises is vacant)

**DECR**—Decommissioned

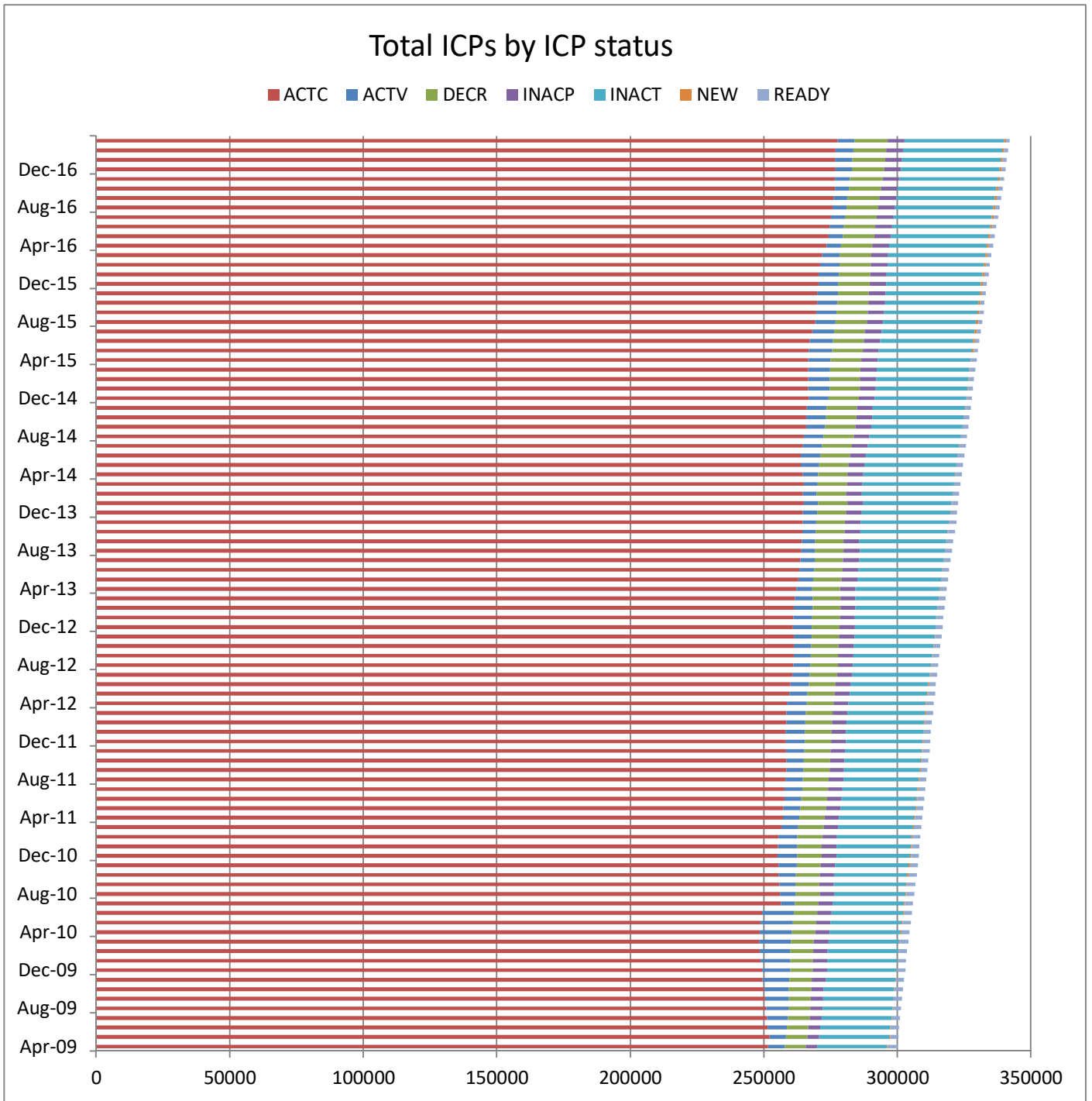
**INACP**—Inactive permanent (gas unable to flow due to a permanent disconnection)

**INACT**—Gas unable to flow due to a temporary disconnection

**NEW**—Newly created ICP, gas not yet able to flow

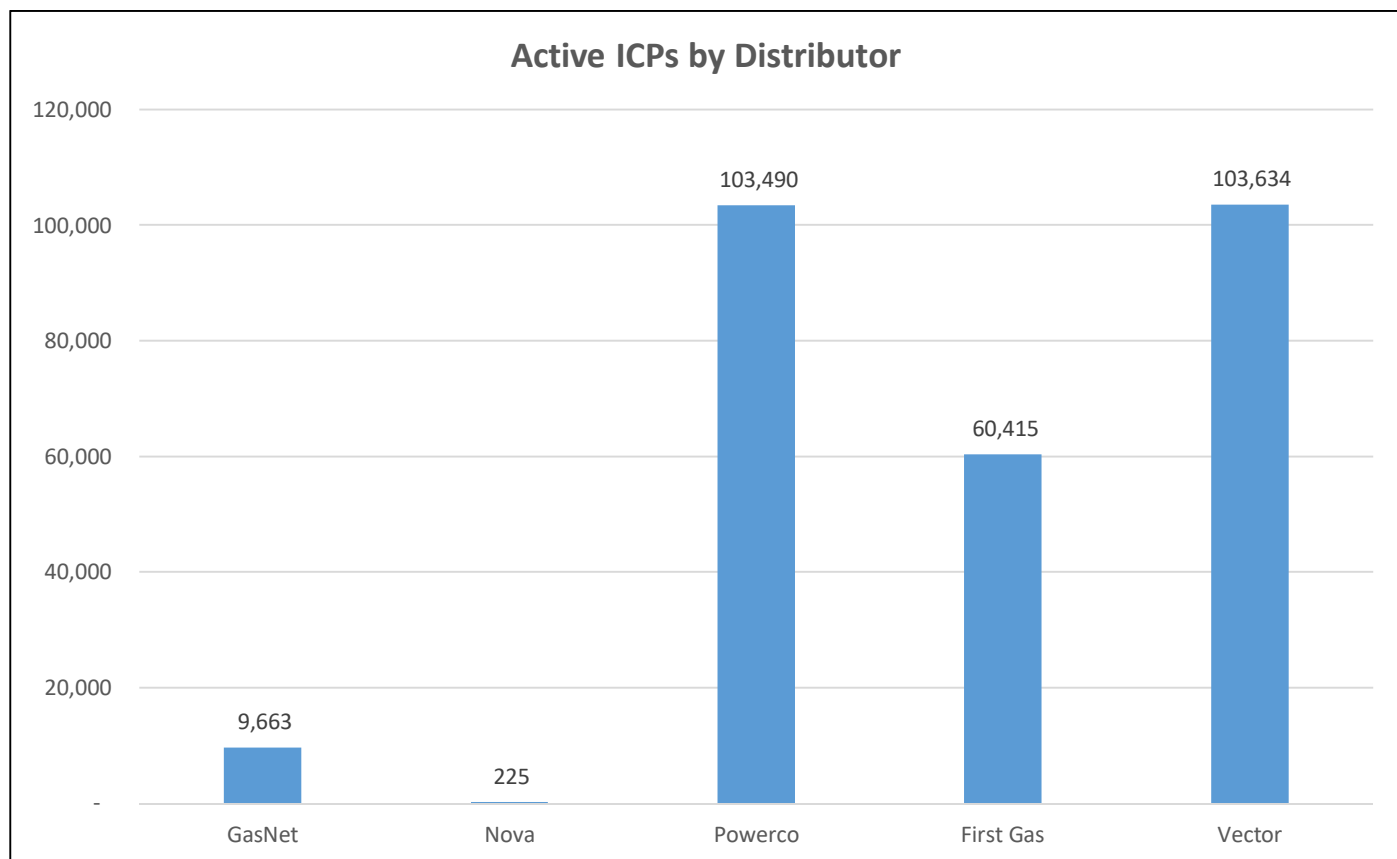
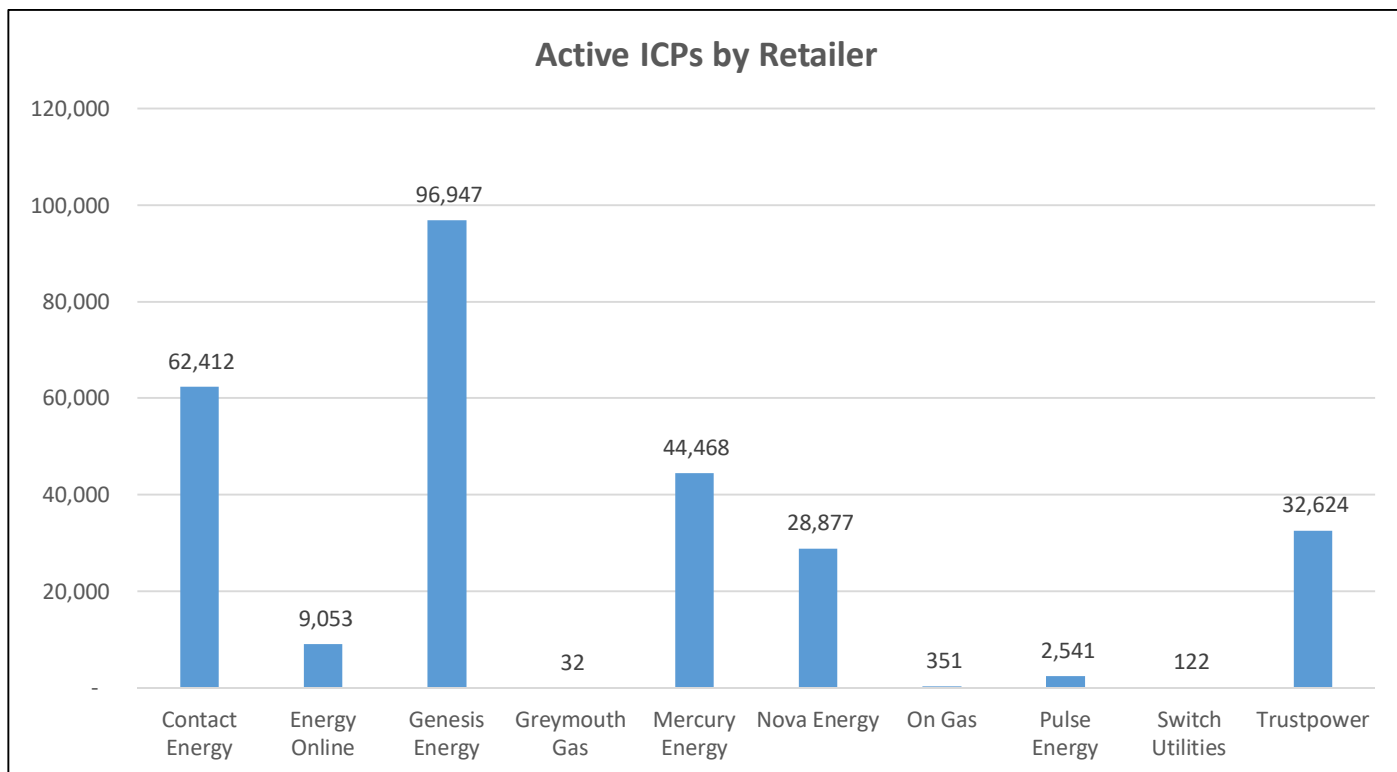
**READY**—New ICP, gas able to flow, awaiting uplift by retailer

# ICPs by status – Historical

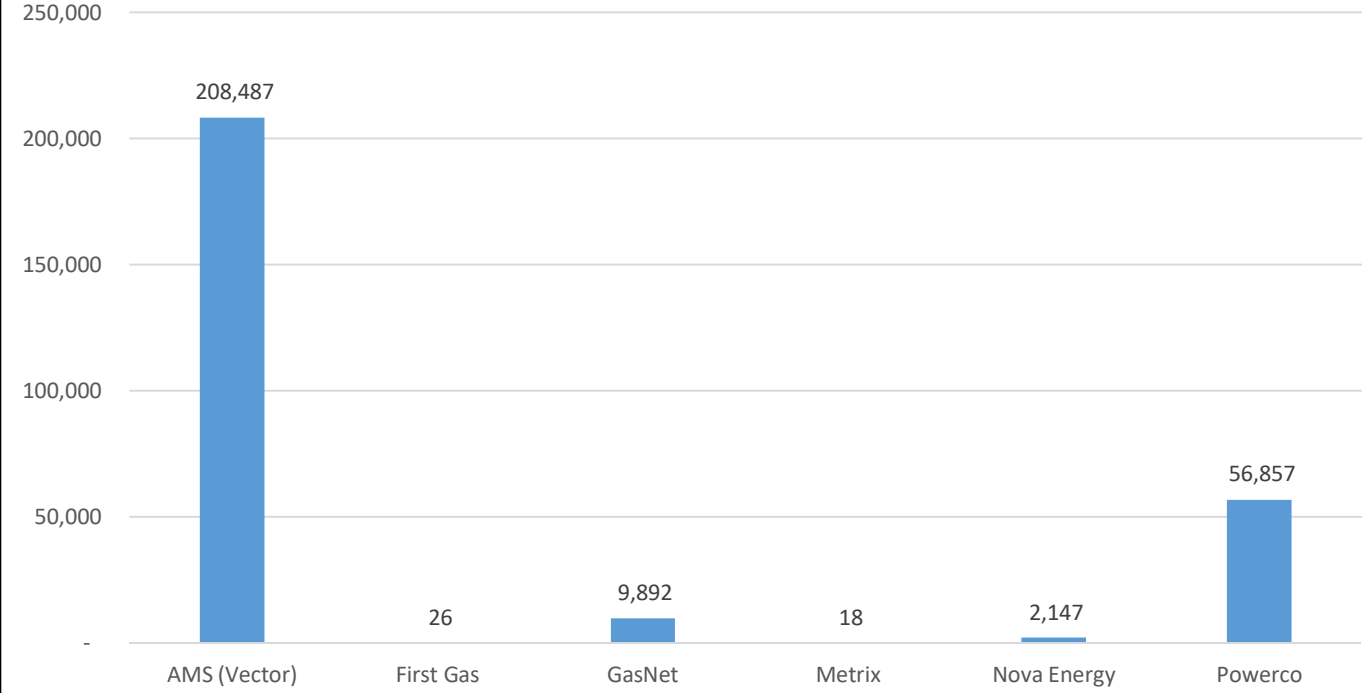


## Market shares – Match 2017

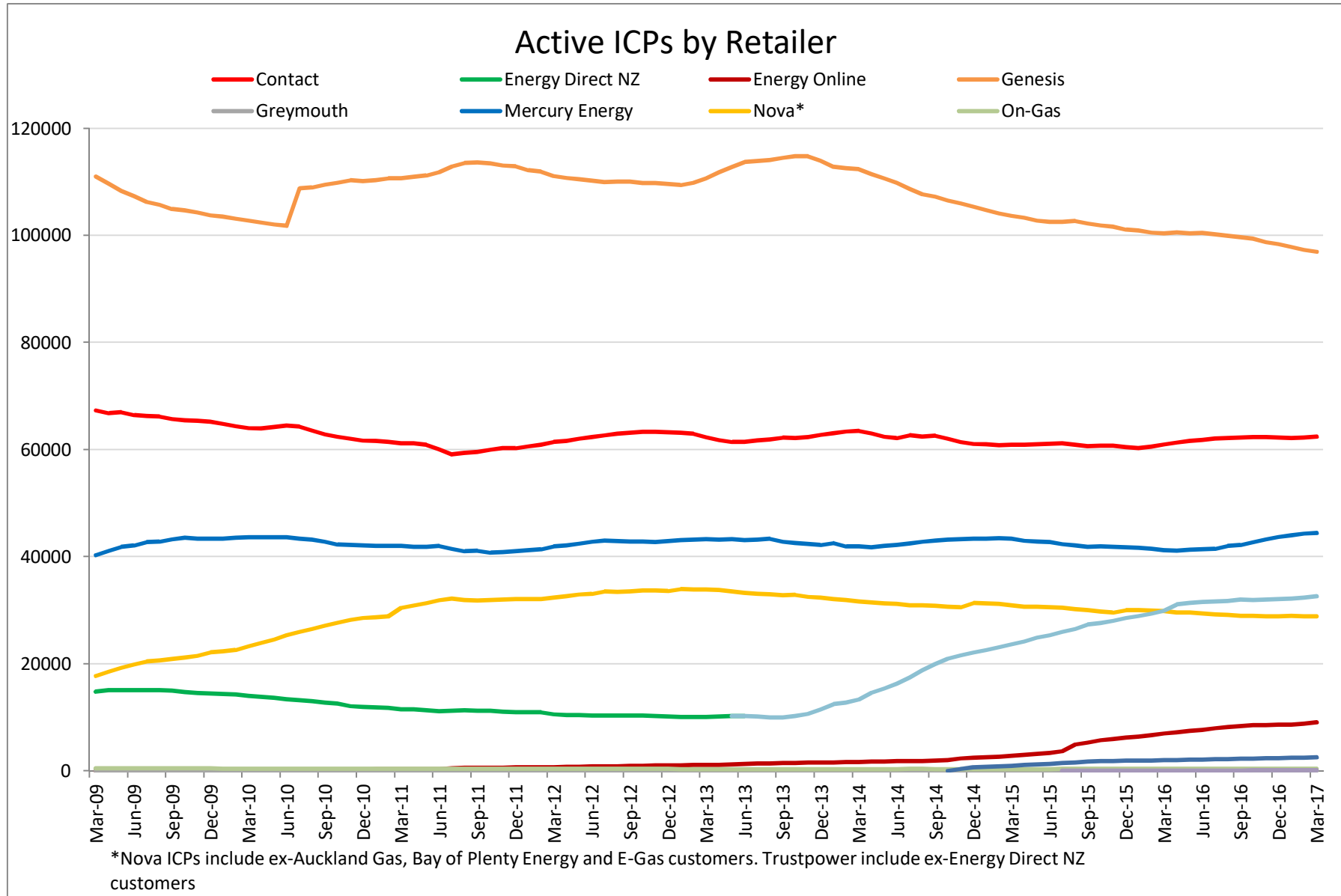
The following charts show the distribution of active-contracted ICPs by retailer, distribution company and meter owner respectively.



### Active ICPs by meter owner



# Market shares – historical





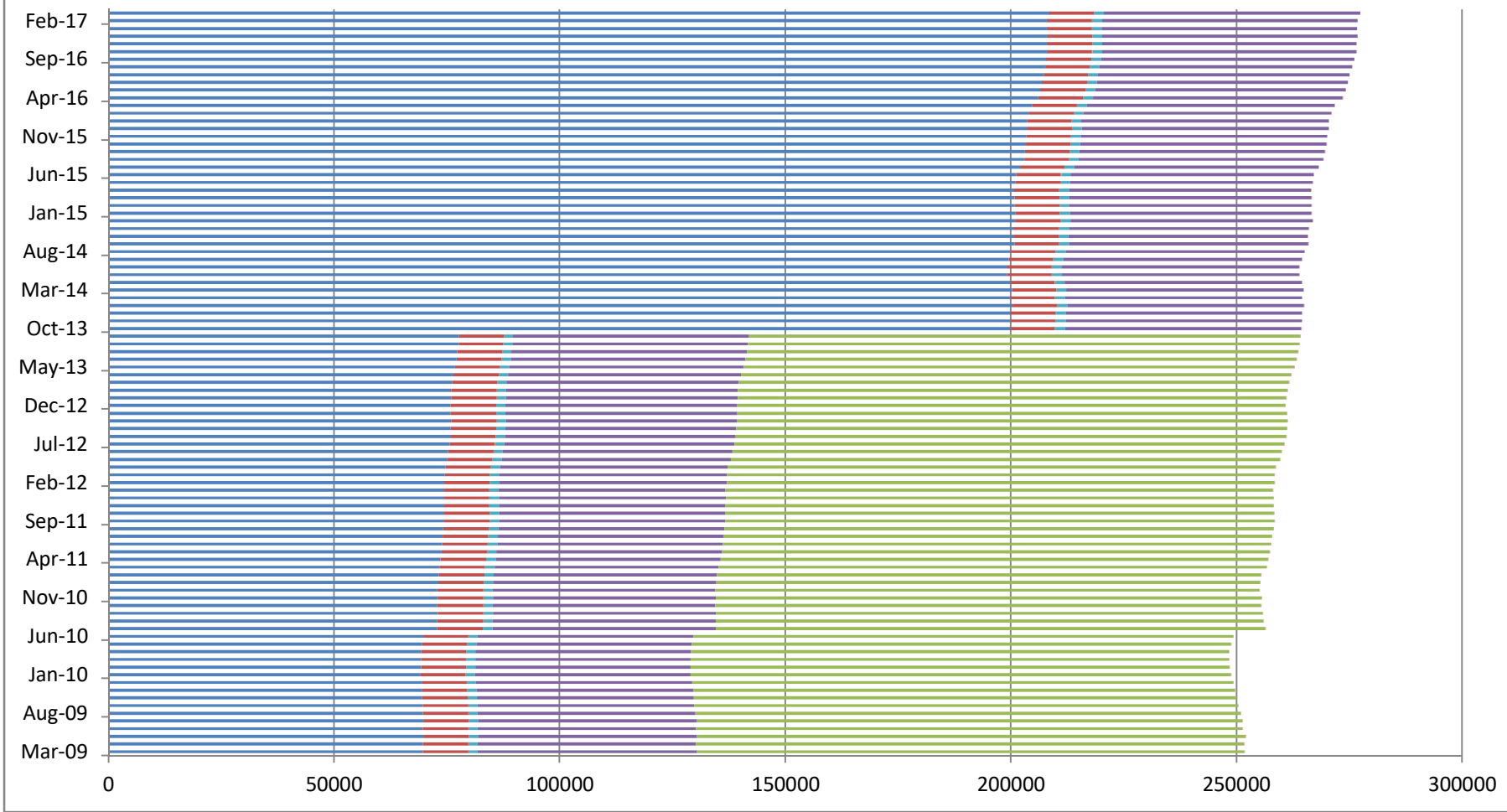
# Active ICPs by Distributor

■ GasNet ■ Nova ■ Powerco ■ First Gas ■ Vector



# Active ICPs by Meter Owner

AMS (Vector) First Gas GasNet Metrix Nova Energy Powerco Contact MDL



## Active-contracted ICPs by gas gate and retailer – March 2017

The following table shows the distribution of active-contracted ICPs by gas gate, and the distribution by retailer at each gas gate.

The responsible retailer codes are as follows:

CTCT—Contact Energy

GEND—Genesis Energy (TOU)

GENG—Genesis Energy

GEOL—Energy Online

GMTH—Greymouth Gas

GNGC—OnGas (Vector)

GNVG—Nova Energy

MEEN—Mercury Energy

PUNZ—Pulse Energy

SULG—Switch Utilities

TRUS—Trustpower

The gas gate names associated with the codes used in the table can be found [here](http://gasindustry.co.nz/work-programmes/downstream-reconciliation/operations/#gas-gate-information/). <http://gasindustry.co.nz/work-programmes/downstream-reconciliation/operations/#gas-gate-information/>

Gas Gate	CTCT	GEND	GENG	GEOL	GMTH	GNGC	GNVG	MEEN	PUNZ	SULG	TRUS	Grand Total
ALF15501						1						1
ASH34301	48		57	6			42	38	3		29	223
BAL08201					1							1
BAL09626					1							1
BEL24510	2474	8	13374	305	1	14	1533	1670	135	6	3190	22710
BMC17901	569	4	568	72		7	191	508	13	1	295	2228
BRO36301							1					1
CAM17201	293		1122	68		2	212	209	17		233	2156
DAN05001	68		12	4		1	24				1	110
DRU15101	4		7	1		3	17	6			2	40
EGC30701						1	2					3
EGC30702			3	1		1	3					8
ELM12301	40		142	3		3	69	30	3		25	315
FLB15601							22					22
FLD03001	334	3	520	24	1	1	423	164	20		206	1696
FLH21901	1		2								2	5
FOX22101	103		40	44			53	18	7		8	273
GIS07810	832	4	1324	132	1	2	376	56	107		302	3136
GLB03401		1										1
HAR11802			1			5	3					9
HEN74101	7163	8	7870	863	2	22	1266	4885	148	30	2710	24967
HPS02993		1										1
HRU16101		1	1			1						3
HST05203							11					11
HST05210	1933	4	516	797		11	703	311	63	1	342	4681
HTK08301	930	1	3847	144		2	104	595	42		1161	6826
HTL16601	8	1	73	2		1	11	7	1		14	118
HTV11301	2640	9	12353	573	1	35	475	1441	123	1	3151	20802
HUN15301					1		2					3
HUN15302							2					2

Gas Gate	CTCT	GEND	GENG	GEOL	GMTH	GNGC	GNVG	MEEN	PUNZ	SULG	TRUS	Grand Total
HWA20801	406		1222	47		1	556	304	30		185	2751
HWA20802							1					1
IGW11901	64		214	8			186	54	9		69	604
KAP12901			2			2						4
KAW04405	17		75	3			102	7	21		5	230
KAW04410						1						1
KAW04411						1						1
KIG16801	5		1				1	2				9
KIH19101	8		78	5			8	7			10	116
KIN02601			3				2	1			1	7
KIN04310						1						1
KIW34201					1							1
KIW34202		1			1							2
KKI23701							2					2
KPA12401	7		28	2			13	4			5	59
KRG24101							1				1	2
KTK23901		1										1
KUK22401	4		13	4			4				2	27
KUP37503		1										1
KUR33601						1						1
LAB20201	18		35	3			8	10	3		38	115
LCF20010						1						1
LCF20011						1						1
LNB24301	63	2	121	9		4	39	23	1		23	285
LVN24401	1108	2	457	358		3	415	120	44		159	2666
MGK05401					1							1
MMU08001	180	5	1392	71	2	3	393	241	17		1932	4236
MNA23402	26		112	7		1	41	29	6		25	247
MNG34001		1										1
MRV16301			2			1						3

Gas Gate	CTCT	GEND	GENG	GEOL	GMTH	GNGC	GNVG	MEEN	PUNZ	SULG	TRUS	Grand Total
MRV16302	114	1	400	4			70	82	10		31	712
MSD01801							1					1
MSD01802						1						1
MTG17301	1		20					1	1		5	28
MTN23801	56		150	8		1	32	63	11		129	450
MTP20601	1		5				1					7
MUT19001						1						1
NGW14501	20		101	2			2	10		1	28	164
NPL12101	1318	2	4409	184		5	3520	989	141		1121	11689
OKA13201	8		20				23	8			3	62
OKS32801	1							1				2
OKU16701	23		113	3			80	41	1		26	287
OKW23401							1					1
OPK13001	26		91	4			34	27	2		10	194
OPO32001	4		50	3			39		2		4	102
ORD24701	1						1				1	3
OTA22601	77		140	54			53	18	12		28	382
OTO14101	7		134	2			11	1	1		7	163
PAH23101			4									4
PAH23201	13		56				4	4	1		19	97
PAP06610	5570	10	2631	615	4	31	750	5818	123	6	714	16272
PAU20101	726		1501	425		2	344	134	106	1	186	3425
PGH15901			10				1	2			1	14
PGU13101			1					1				2
PHT04901	27		36	2			15	4				84
PHT04902						1						1
PIR31101	3		26	2			3	8	2		5	49
PLN24201	3143	3	4475	325		17	3745	1252	241	1	1481	14683
PPA33201	19		115	9			39	23	1		164	370
PTA20901	13		98	3		1	30	15	6		17	183

Gas Gate	CTCT	GEND	GENG	GEOL	GMTH	GNGC	GNVG	MEEN	PUNZ	SULG	TRUS	Grand Total
PTR32601	44		206	6		1	24	36	3		17	337
PUK04201	97	1	40	40		2	72	48	1		16	317
PYE36601	7		7	2			6	4			35	61
RAG33401						1						1
RAM15201	2			2		1	1					6
ROT08101	506		1720	211		11	628	398	173		168	3815
RPR30801	2		16			1	3	1			2	25
STR10201	83		441	17			215	84	18		62	920
TAC31001						1						1
TAT16401					1							1
TAU07001	540		946	50		2	354	130	49	2	133	2206
TAW31004	124	1	776	47		3	113	79	14		116	1273
TCC00201	1											1
THO22701	4		7	1				1				13
TIR33501						1						1
TIR33502	14		41	2			10	4	2		2	75
TKN17001	11		132	2			11	1			7	164
TKP05101							1					1
TKR19701	141		582	15		3	87	58	27		61	974
TKS17401		1	3		1		1					6
TPK33301	16		202	10			52	18	5		310	613
TRC02003	1											1
TRG07701	178	1	1407	132		2	522	199	21	1	2177	4640
TTK30601	1		3	1			1					6
TUK06502	3	1	1			1	5	3			1	15
TWA35610	7287	9	10625	629		29	4956	3044	124	24	3980	30707
TWB24810							189					189
WAG21501	895	4	3058	177		7	276	1112	238		3325	9092
WAK22801							1					1
WAK22802	278		684	176			107	75	39		96	1455

Gas Gate	CTCT	GEND	GENG	GEOL	GMTH	GNGC	GNVG	MEEN	PUNZ	SULG	TRUS	Grand Total
WEL18301	5		13	1				4			2	25
WHG07501	174	2	587	21		2	166	192	17	1	8	1170
WHK32101	24	1	133	10	1	2	245	7	9		10	442
WKE19201		1										1
WRK18901	46		120	5		1	26	40	3	1	36	278
WST03610	19508	12	8822	1969	11	73	3697	18138	212	41	2091	54574
WTA16501	2	1	29			5	3	1			1	42
WTG06910	815	2	3815	110		4	421	464	61	1	1072	6765
WTK33901	992	1	1837	205		1	171	991	38	3	651	4890
WTR12001	93		406	11		2	397	91	13		139	1152
WTT20301						1						1
WVY23601	1		3					3				7
<b>Grand Total</b>	<b>62412</b>	<b>112</b>	<b>96835</b>	<b>9053</b>	<b>32</b>	<b>351</b>	<b>28877</b>	<b>44468</b>	<b>2541</b>	<b>122</b>	<b>32624</b>	<b>277427</b>