

Gas Registry Statistics – January 2017

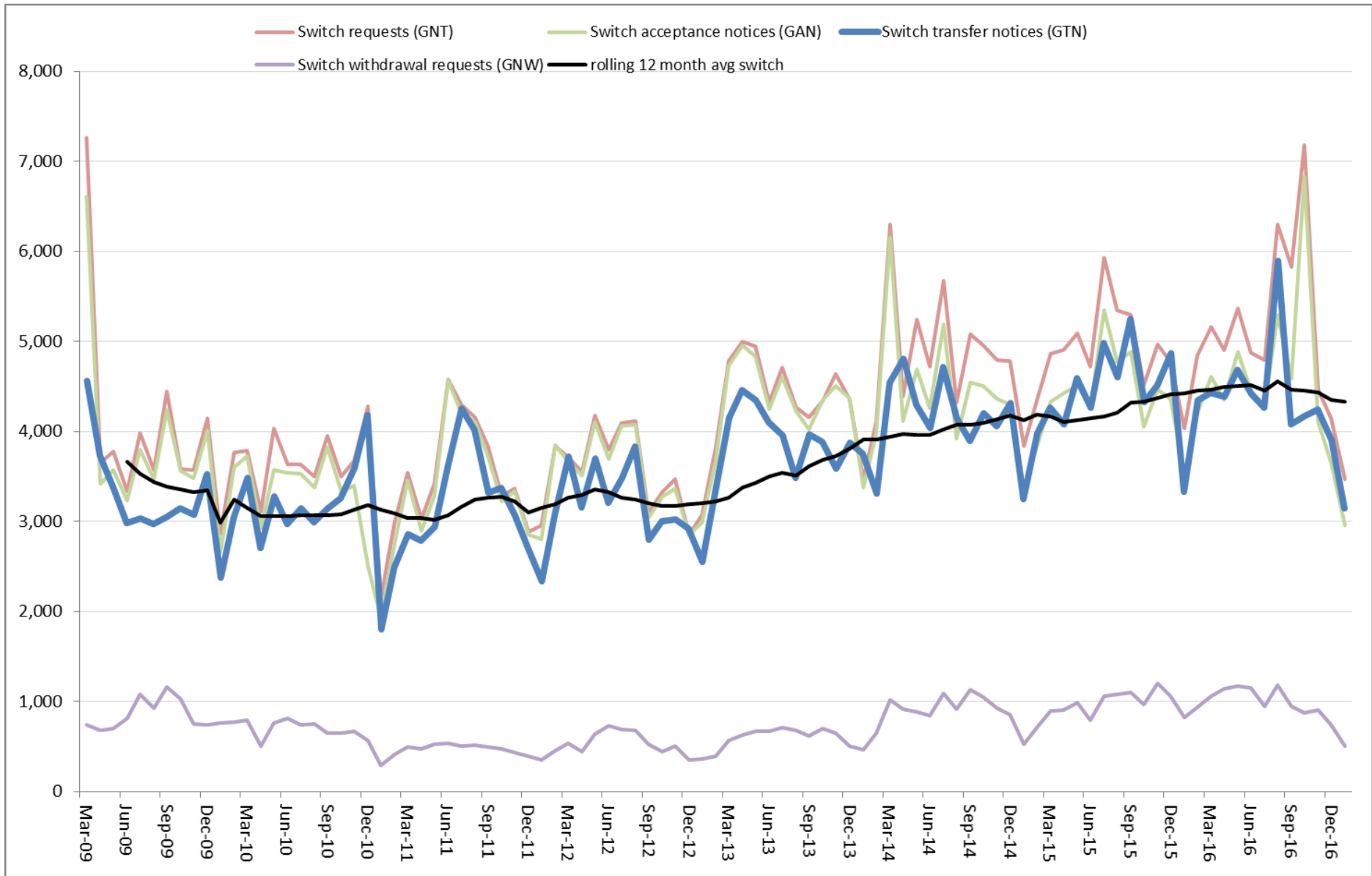
The following report provides statistics and charts illustrating gas registry usage, switching volumes and breakdowns of retailer, distributor and meter owner market shares. The information is provided in accordance with version 1.2 of the Determinations by the Industry Body (Gas Industry Co) under the Gas (Switching Arrangements) Rules 2008, dated 20 February 2009.

Summary registry statistics – January 2017

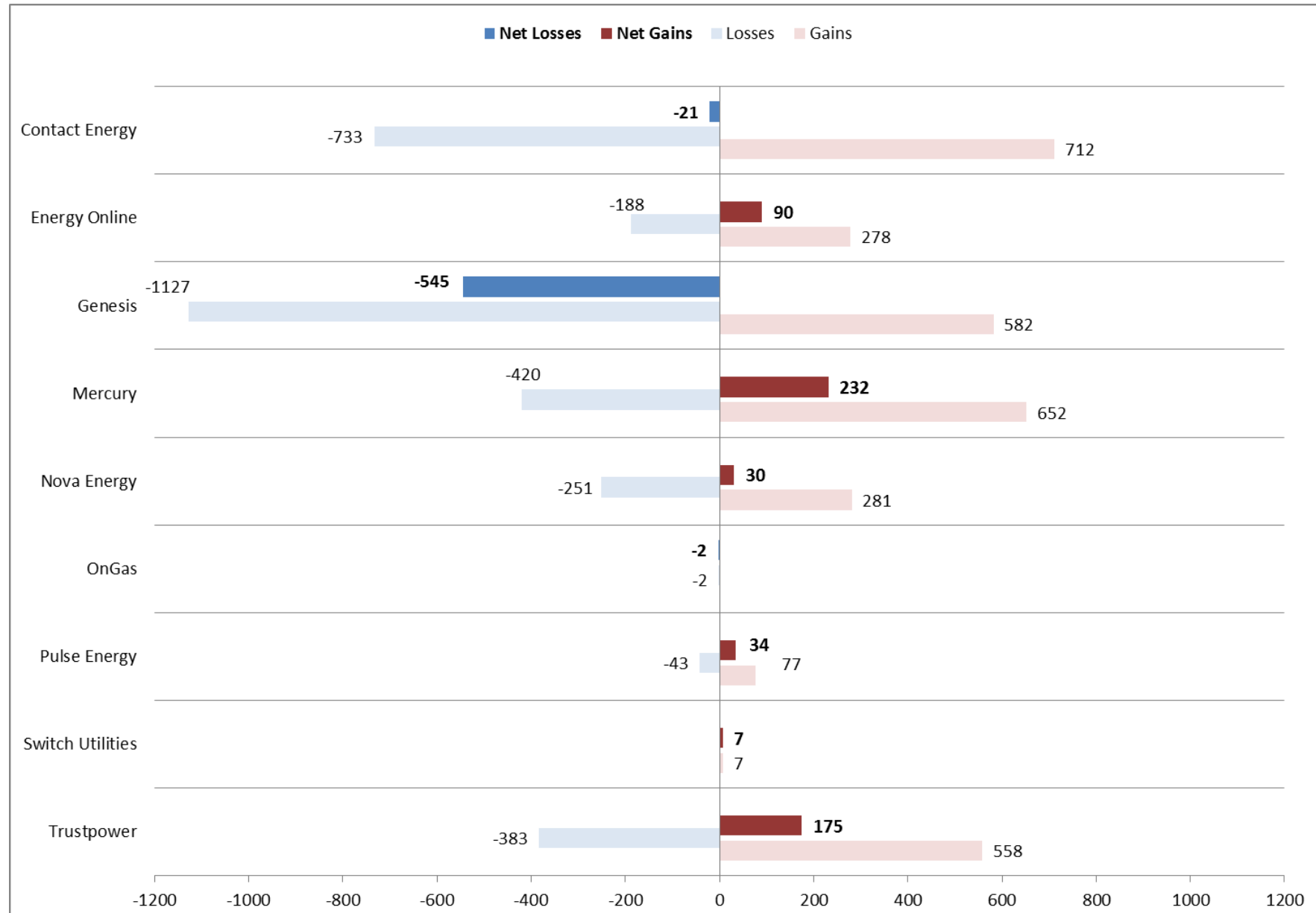
ICP enquiries processed in month (Online)	40,044
ICP enquiries processed in month (Offline)	9,615,789
Total ICP enquiries processed in month	9,655,833
ICPs added to the registry in month	366
ICPs changed in month	4,621
ICPs decommissioned in month	57
Valid standard switch requests (GNT-S) received in month	1,178
Valid move switch requests (GNT-SM) received in month	2,292
Valid switch requests (GNT) received in month	3,470
Valid switch acceptance notices (GAN) received in month	2,958
Valid switch transfer notices (GTN) received in month	3,147
Valid switch withdrawal requests (GNW) received in month	507
Valid switch withdrawal acceptances (GAW-A) received in month	443
Valid switch withdrawal rejections (GAW-R) received in month	34
Valid switch reading renegotiation requests (GNC) received in month	204
Valid switch reading renegotiation acceptances (GAC-A) received in month	176
Valid switch reading renegotiation rejections (GAC-R) received in month	29

Note: A switch transfer notice (GTN) is the last stage required to complete the switching process. This statistic indicates the number of switches completed in the month.

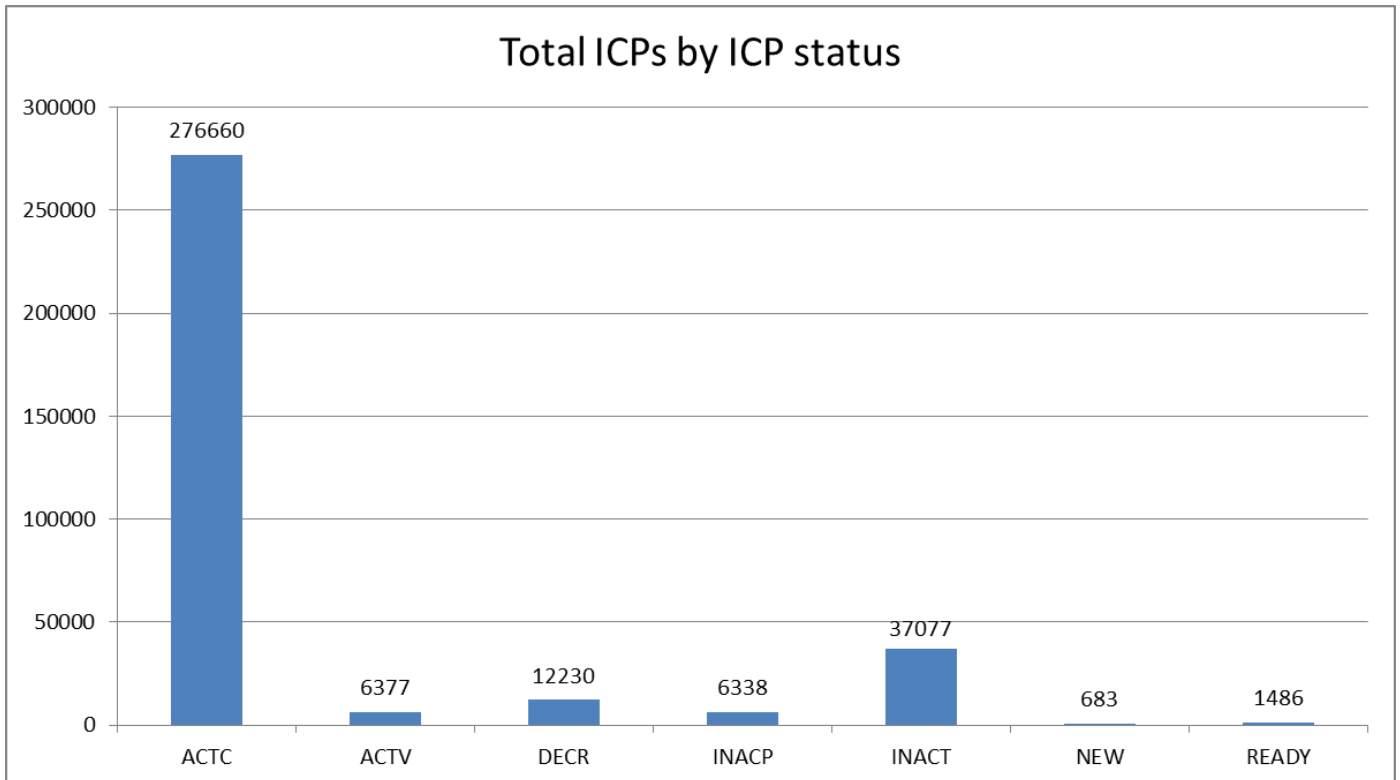
Switching activity – historical



Switching gains and losses – January 2017



ICPs by status – January 2017



Installation control points (ICPs) are the record of customer installations in the gas registry. The meaning of the ICP status codes are as follows:

ACTC—Active contracted (gas is able to flow and the customer has a contract with a retailer)

ACTV—Active vacant (gas is able to flow and the premises is vacant)

DECR—Decommissioned

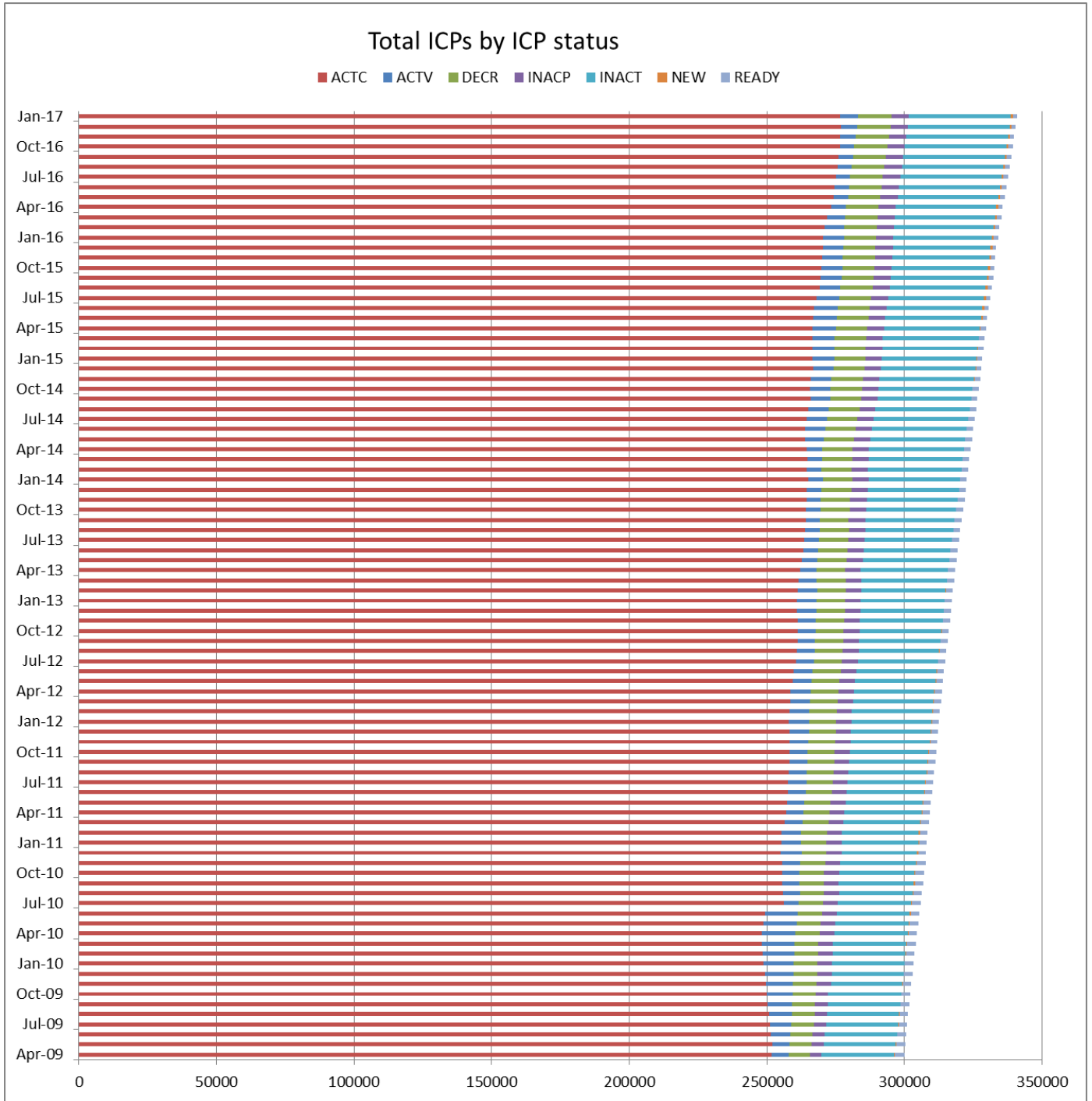
INACP—Inactive permanent (gas unable to flow due to a permanent disconnection)

INACT—Gas unable to flow due to a temporary disconnection

NEW—Newly created ICP, gas not yet able to flow

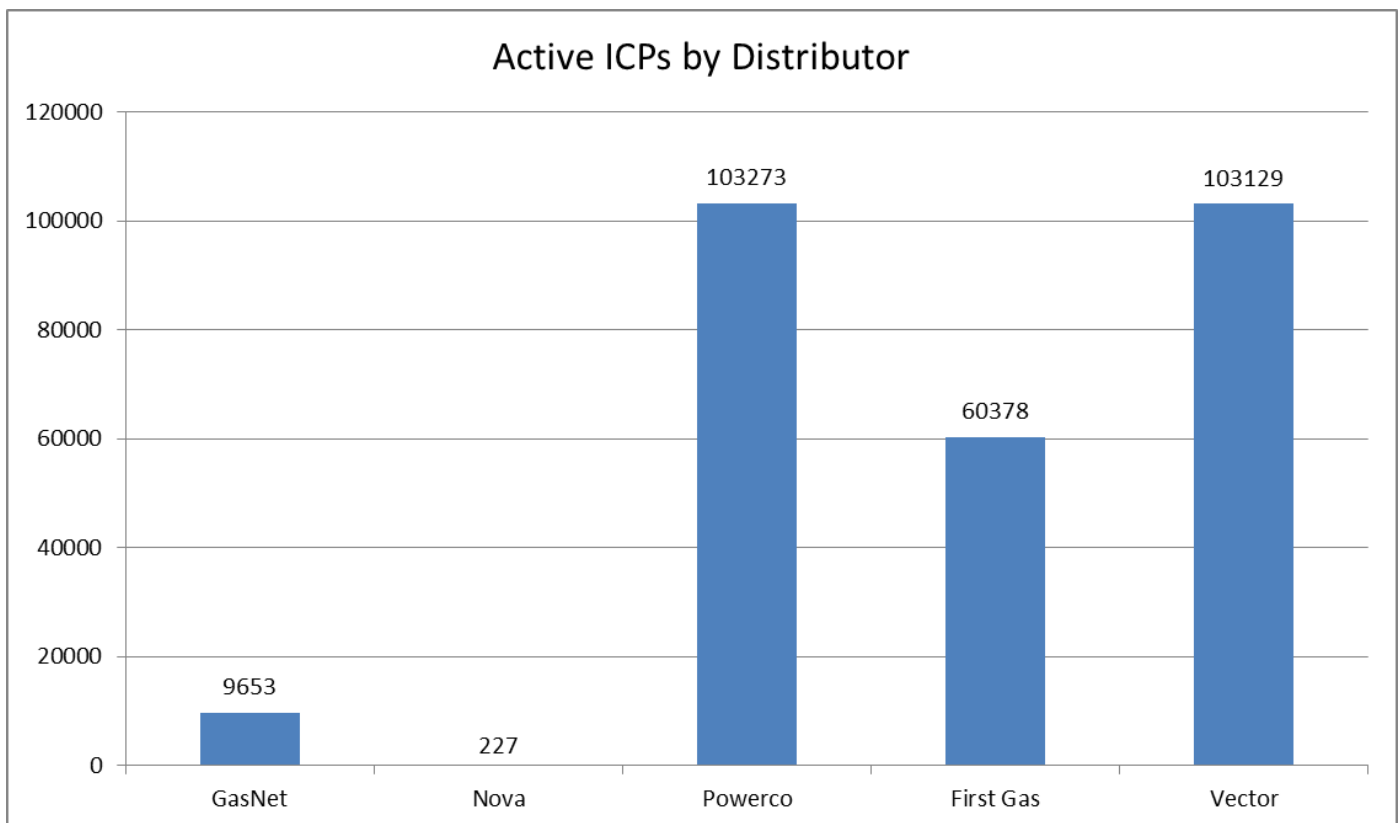
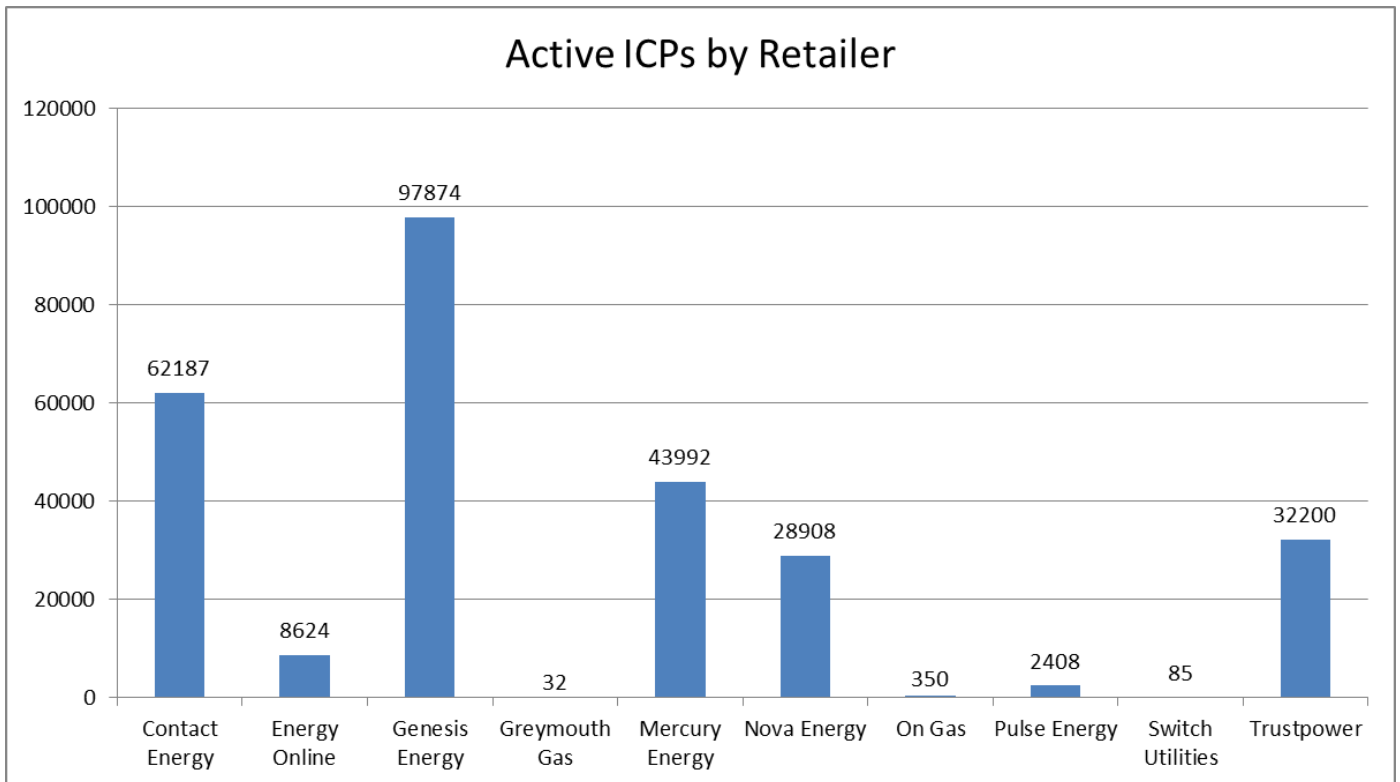
READY—New ICP, gas able to flow, awaiting uplift by retailer

ICPs by status – Historical

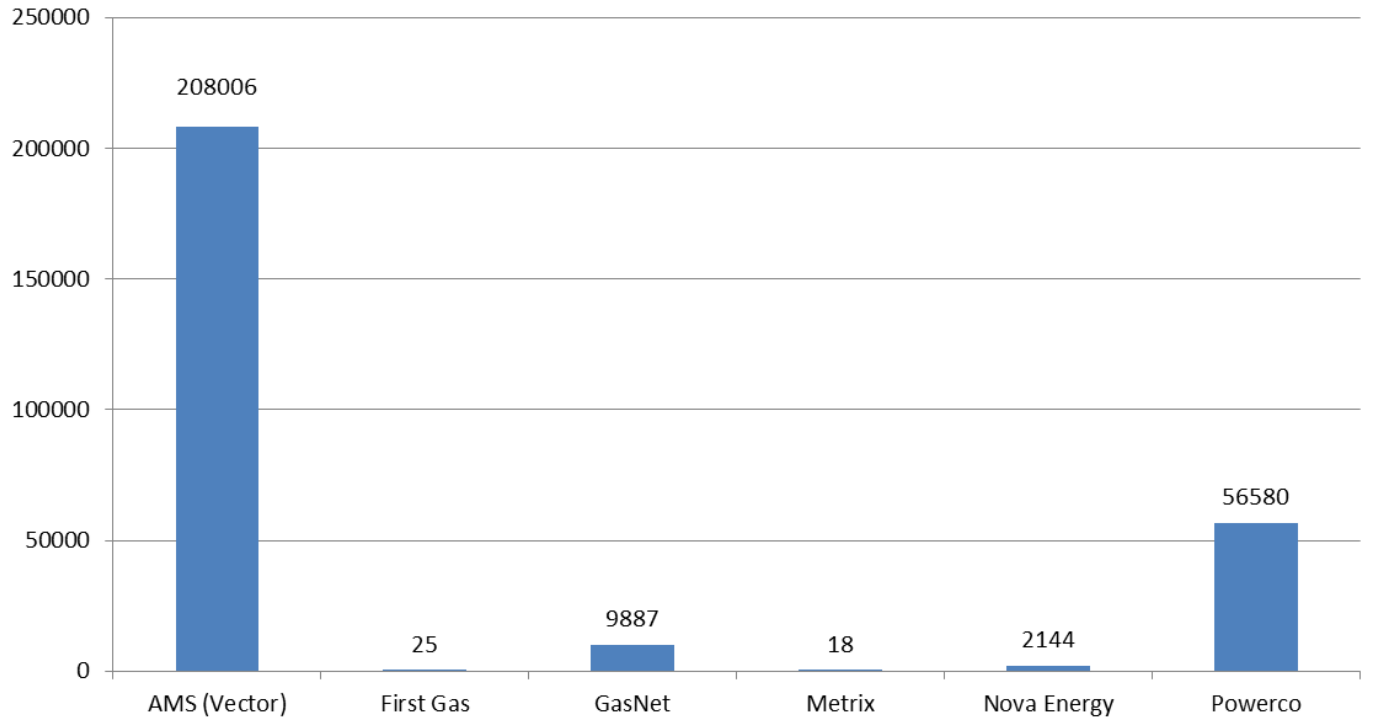


Market shares – January 2017

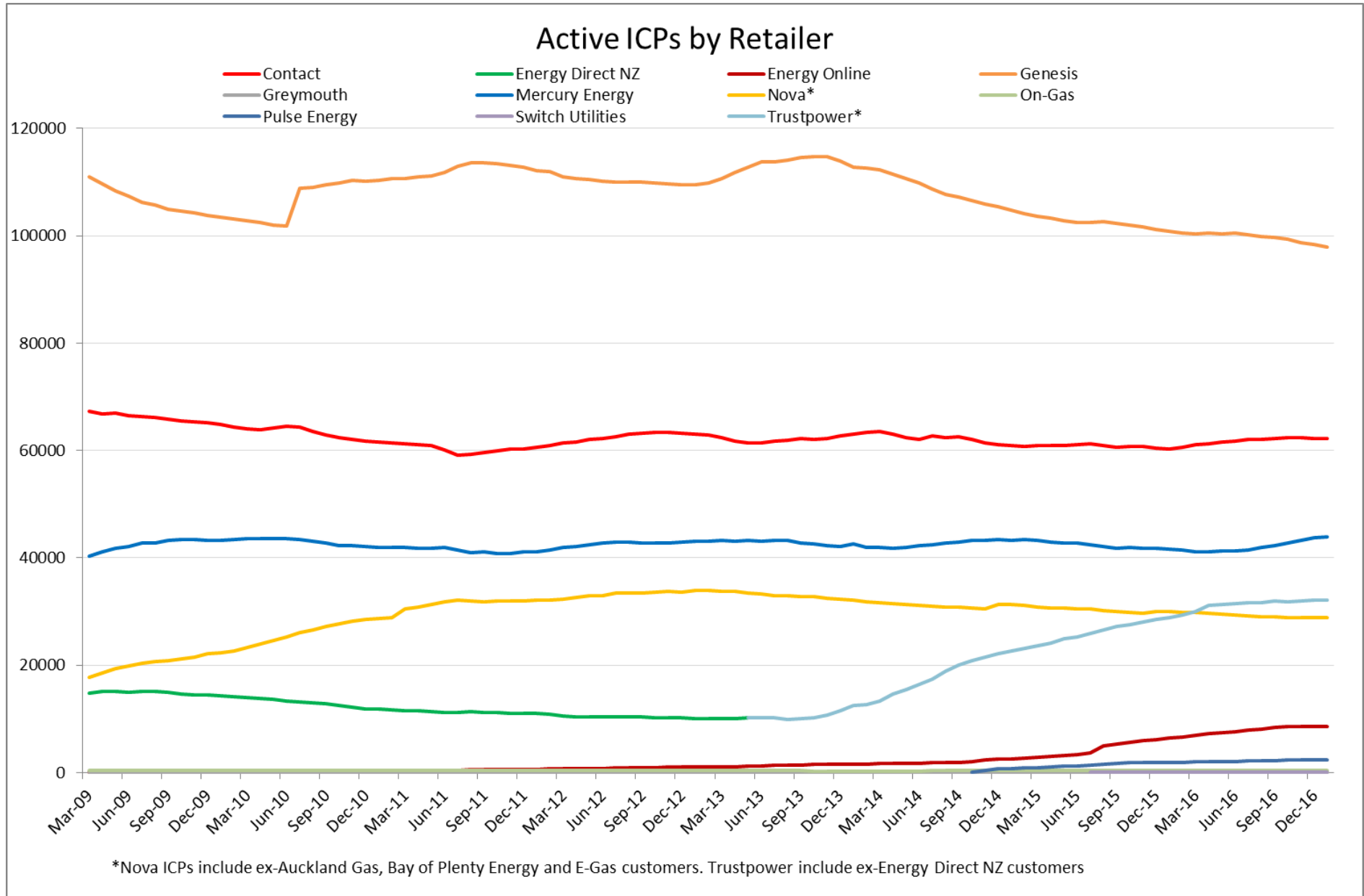
The following charts show the distribution of active-contracted ICPs by retailer, distribution company and meter owner respectively.



Active ICPs by meter owner

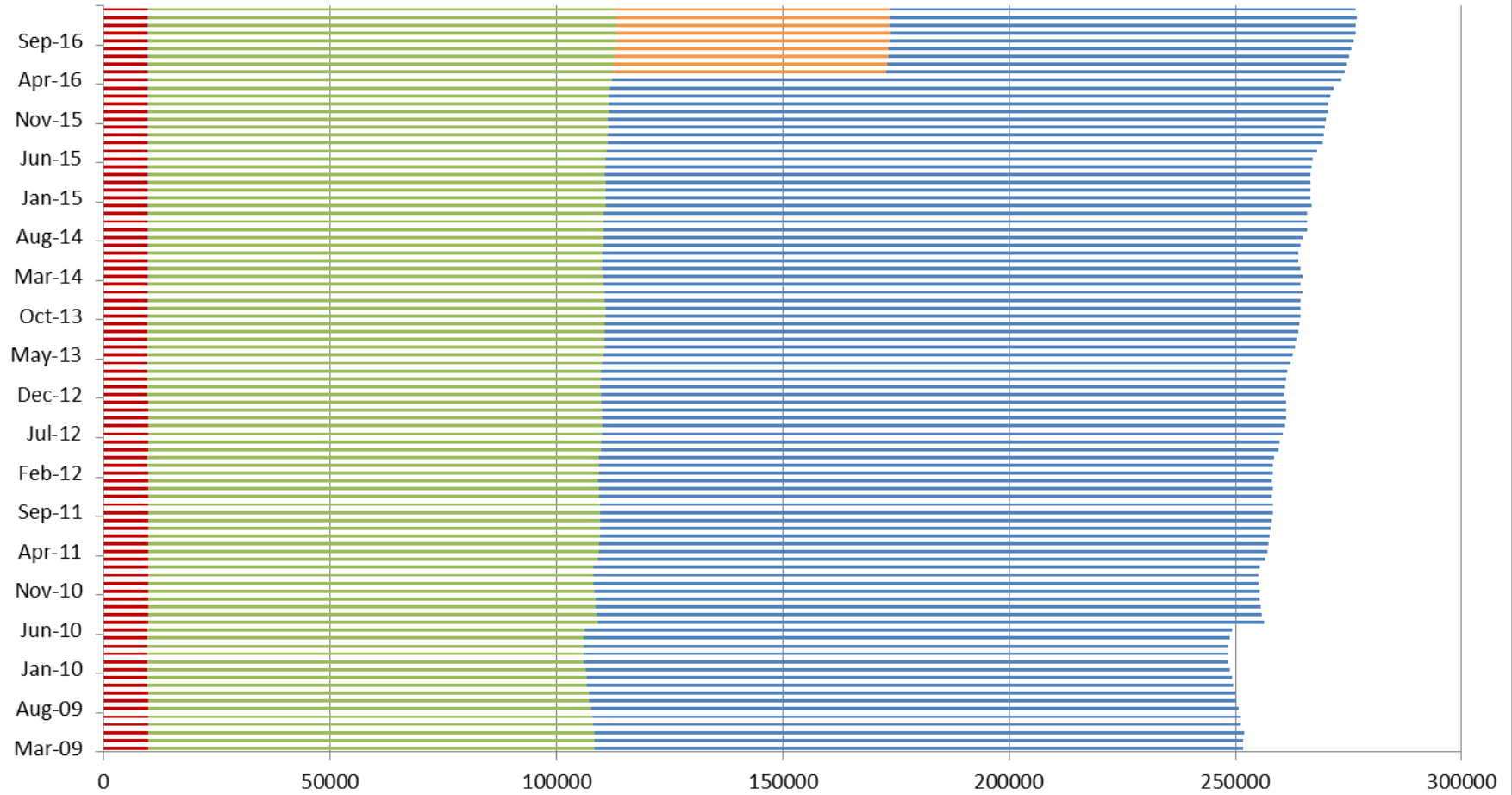


Market shares – historical



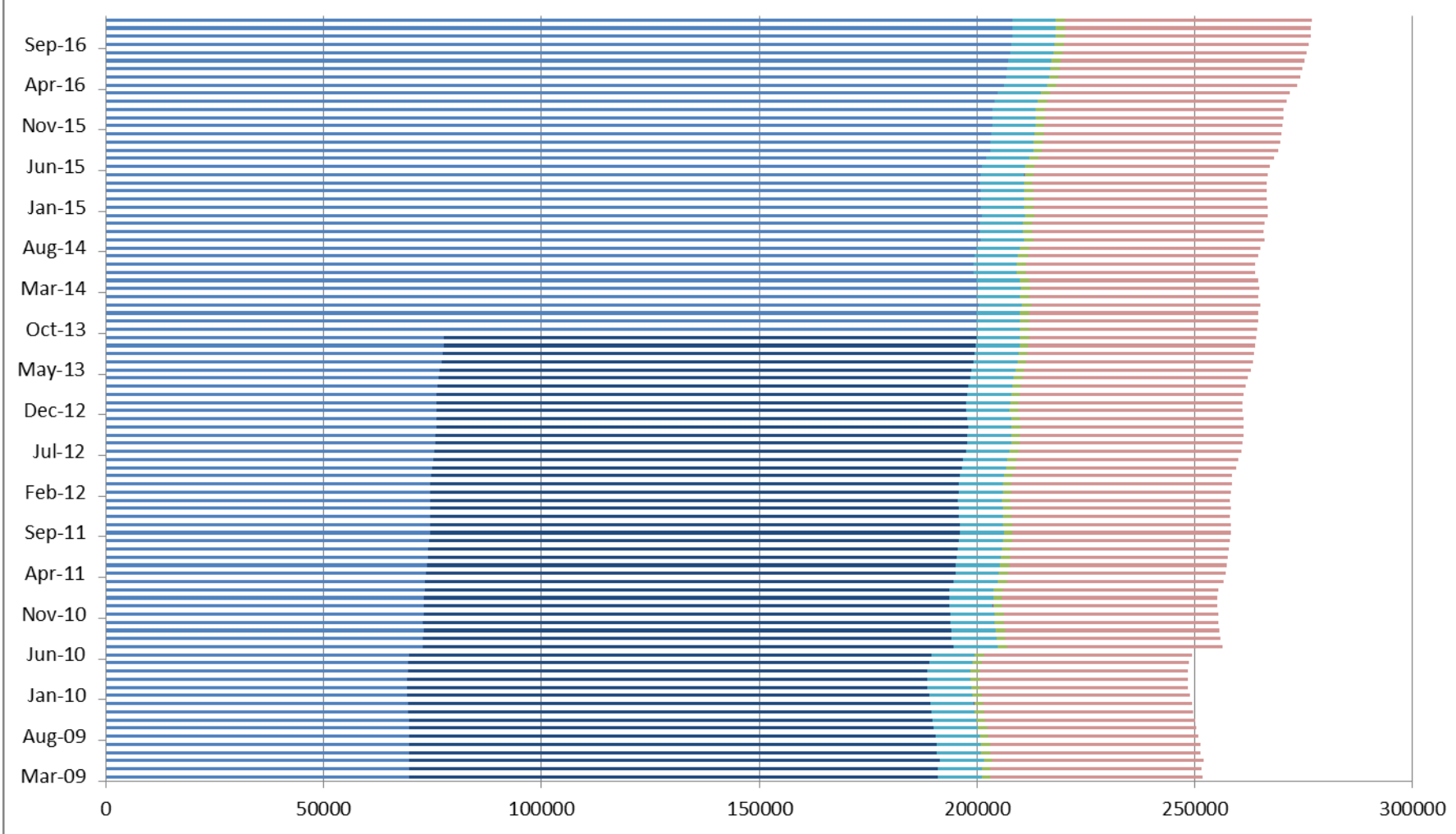
Active ICPs by Distributor

■ GasNet ■ Nova ■ Powerco ■ First Gas ■ Vector



Active ICPs by Meter Owner

AMS (Vector) Contact First Gas MDL GasNet Metrix Nova Energy Powerco



Active-contracted ICPs by gas gate and retailer – January 2017

The following table shows the distribution of active-contracted ICPs by gas gate, and the distribution by retailer at each gas gate.

The responsible retailer codes are as follows:

CTCT—Contact Energy

EDNZ—Energy Direct NZ (Wanganui Gas)

GEND—Genesis Energy (TOU)

GENG—Genesis Energy

GEOL—Energy Online

GMTH—Greymouth Gas

GNGC—OnGas (Vector)

GNVG—Nova Energy

MEEN—Mercury Energy (Mighty River Power)

PUNZ—Pulse Energy

SULG—Switch Utilities

TRUS—Trustpower

The gas gate names associated with the codes used in the table can be found [here](http://gasindustry.co.nz/work-programmes/downstream-reconciliation/operations/#gas-gate-information/). <http://gasindustry.co.nz/work-programmes/downstream-reconciliation/operations/#gas-gate-information/>

Gas Gate	CTCT	GEND	GENG	GEOL	GMTH	GNGC	GNVG	MEEN	PUNZ	SULG	TRUS	Grand Total
ALF15501						1						1
ASH34301	48		61	6			42	36	3		29	225
BAL08201					1							1
BAL09626					1							1
BEL24510	2448	8	13450	289	1	14	1501	1657	126	5	3180	22679
BMC17901	567	4	577	68		7	197	508	14		272	2214
BRO36301							1					1
CAM17201	302		1121	66		2	209	208	18		219	2145
DAN05001	69		11	4		1	24				1	110
DRU15101	4		7	1		3	17	6			1	39
EGC30701						1	2					3
EGC30702			3	1		1	3					8
ELM12301	40		146	1		3	71	31	3		25	320
FLB15601							22					22
FLD03001	335	2	530	26	1	1	412	162	20		201	1690
FLH21901	1		2								2	5
FOX22101	105		39	43			54	19	7		8	275
GIS07810	813	4	1357	120	1	2	389	47	99		306	3138
GLB03401		1										1
HAR11802			1			5	3					9
HEN74101	7081	8	7981	835	2	22	1285	4866	132	17	2627	24856
HPS02993		1										1
HRU16101		1	1			1						3
HST05203							11					11
HST05210	1933	4	517	811		11	707	275	63	2	341	4664
HTK08301	912	1	3892	136		2	91	594	41		1117	6786
HTL16601	8	1	74	1		1	10	7	1		14	117
HTV11301	2544	9	12576	539	1	35	471	1434	119	1	3119	20848
HUN15301					1		3					4

Gas Gate	CTCT	GEND	GENG	GEOL	GMTH	GNGC	GNVG	MEEN	PUNZ	SULG	TRUS	Grand Total
HUN15302							2					2
HWA20801	406		1239	42		1	555	298	26		179	2746
HWA20802							1					1
IGW11901	63		219	8			183	54	9		68	604
KAP12901			2			2						4
KAW04405	18		80	2			102	7	19		6	234
KAW04410						1						1
KAW04411						1						1
KIG16801	5		1				1	2				9
KIH19101	7		80	4			8	6			8	113
KIN02601			3				2	1			1	7
KIN04310						1						1
KIW34201					1							1
KIW34202		1	1									2
KKI23701							2					2
KPA12401	7		26	1			14	3			5	56
KRG24101							1				1	2
KTK23901		1										1
KUK22401	4		13	4			4				2	27
KUP37503		1										1
KUR33601						1						1
LAB20201	17		38	2			7	12	3		38	117
LCF20010						1						1
LCF20011						1						1
LNB24301	66	2	125	8		4	39	21			22	287
LVN24401	1090	2	458	359		3	433	124	40		163	2672
MGK05401					1							1
MMU08001	175	5	1416	72	2	3	400	206	18		1914	4211
MNA23402	26		112	8		1	40	29	6		24	246

Gas Gate	CTCT	GEND	GENG	GEOL	GMTH	GNGC	GNVG	MEEN	PUNZ	SULG	TRUS	Grand Total
MNG34001		1										1
MRV16301			1			1						2
MRV16302	114	1	402	3			69	81	9		29	708
MSD01801							1					1
MSD01802						1						1
MTG17301	1		20					1	1		5	28
MTN23801	57		152	6		1	32	63	13		129	453
MTP20601	1		5				1					7
MUT19001						1						1
NGW14501	19		102	2			3	9		1	29	165
NPL12101	1316	2	4422	163		5	3535	971	139		1121	11674
OKA13201	8		20	1			23	7			3	62
OKS32801	1							1				2
OKU16701	21		114	3			79	42	1		24	284
OPK13001	26		89	4			34	27	2		10	192
OPO32001	3		50	3			40		2		4	102
ORD24701	1						1				1	3
OTA22601	75		145	54			52	17	11		29	383
OTO14101	7		137	2			11	1			7	165
PAH23101			4									4
PAH23201	13		56				4	5	1		18	97
PAP06610	5588	10	2624	580	4	31	745	5754	96	2	703	16137
PAU20101	725		1518	423		2	344	132	102	1	182	3429
PGH15901			11				1	3			1	16
PHT04901	26		36	2			14	4				82
PHT04902						1						1
PIR31101	3		26	2			3	8	2		5	49
PLN24201	3138	3	4612	296		17	3765	1151	227		1477	14686
PPA33201	18		110	5			36	20	1		148	338

Gas Gate	CTCT	GEND	GENG	GEOL	GMTH	GNGC	GNVG	MEEN	PUNZ	SULG	TRUS	Grand Total
PTA20901	14		98	3		1	27	14	8		18	183
PTR32601	43		207	6		1	23	35	3		16	334
PUK04201	94	1	40	39		2	71	50	2		15	314
PYE36601	7		5	2			6	3			35	58
RAG33401						1						1
RAM15201	2			2		1	1					6
ROT08101	513		1739	202		11	636	388	174		164	3827
RPR30801	2		16			1	3	1			2	25
STR10201	87		442	17			213	82	17		61	919
TAC31001						1						1
TAT16401					1							1
TAU07001	542		957	41		2	358	122	47	1	125	2195
TAW31004	124	1	786	44		3	116	75	15		109	1273
TCC00201	1											1
THO22701	4		7	1				1				13
TIR33501						1						1
TIR33502	14		42	1			10	4	2		2	75
TKN17001	7		121	2			10	1			6	147
TKP05101							1					1
TKR19701	146		588	15		3	88	57	24		59	980
TKS17401	4	1	15		1		2				1	24
TPK33301	14		205	8			55	19	3		306	610
TRC02003	1											1
TRG07701	177	1	1433	121		2	532	191	21	1	2185	4664
TTK30601	1		3	1			1					6
TUK06502	3	1	1			1	5	3			1	15
TWA35610	7350	10	10723	535		29	4890	3038	112	23	3902	30612
TWB24810							191					191
WAG21501	881	4	3056	158		7	281	1096	231		3363	9077

Gas Gate	CTCT	GEND	GENG	GEOL	GMTH	GNGC	GNVG	MEEN	PUNZ	SULG	TRUS	Grand Total
WAK22801	1						1					2
WAK22802	273		692	172			106	75	37		99	1454
WEL18301	4		13	1				3			3	24
WHG07501	173	2	591	22		2	166	190	16	1	7	1170
WHK32101	23	1	131	8	1	2	249	7	8		9	439
WKE19201		1										1
WRK18901	46		120	5		1	26	38	3	1	35	275
WST03610	19505	12	8852	1903	11	73	3749	18063	204	27	2044	54443
WTA16501	2	1	30		1	4	3	1			1	43
WTG06910	817	2	3827	101		4	413	460	62		1034	6720
WTK33901	964	1	1804	199		1	169	973	34	2	636	4783
WTR12001	92		400	9		2	394	89	11		144	1141
WTT20301						1						1
WVY23601	1		3					3				7
Grand Total	62187	112	97762	8624	32	350	28908	43992	2408	85	32200	276660