

Gas Registry Statistics – August 2015

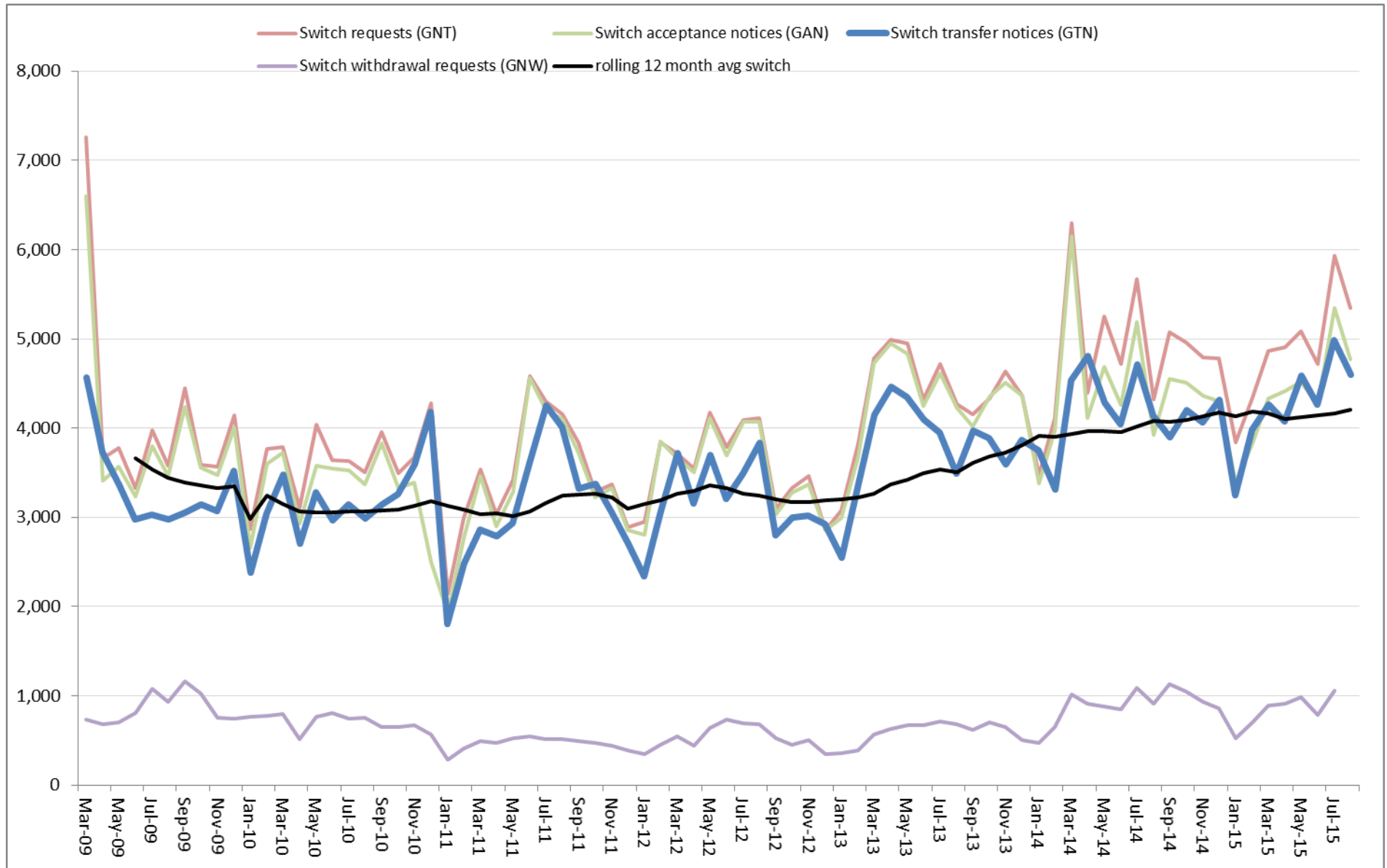
The following report provides statistics and charts illustrating gas registry usage, switching volumes and breakdowns of retailer, distributor and meter owner market shares. The information is provided in accordance with version 1.2 of the Determinations by the Industry Body (Gas Industry Co) under the Gas (Switching Arrangements) Rules 2008, dated 20 February 2009.

Summary registry statistics – August 2015

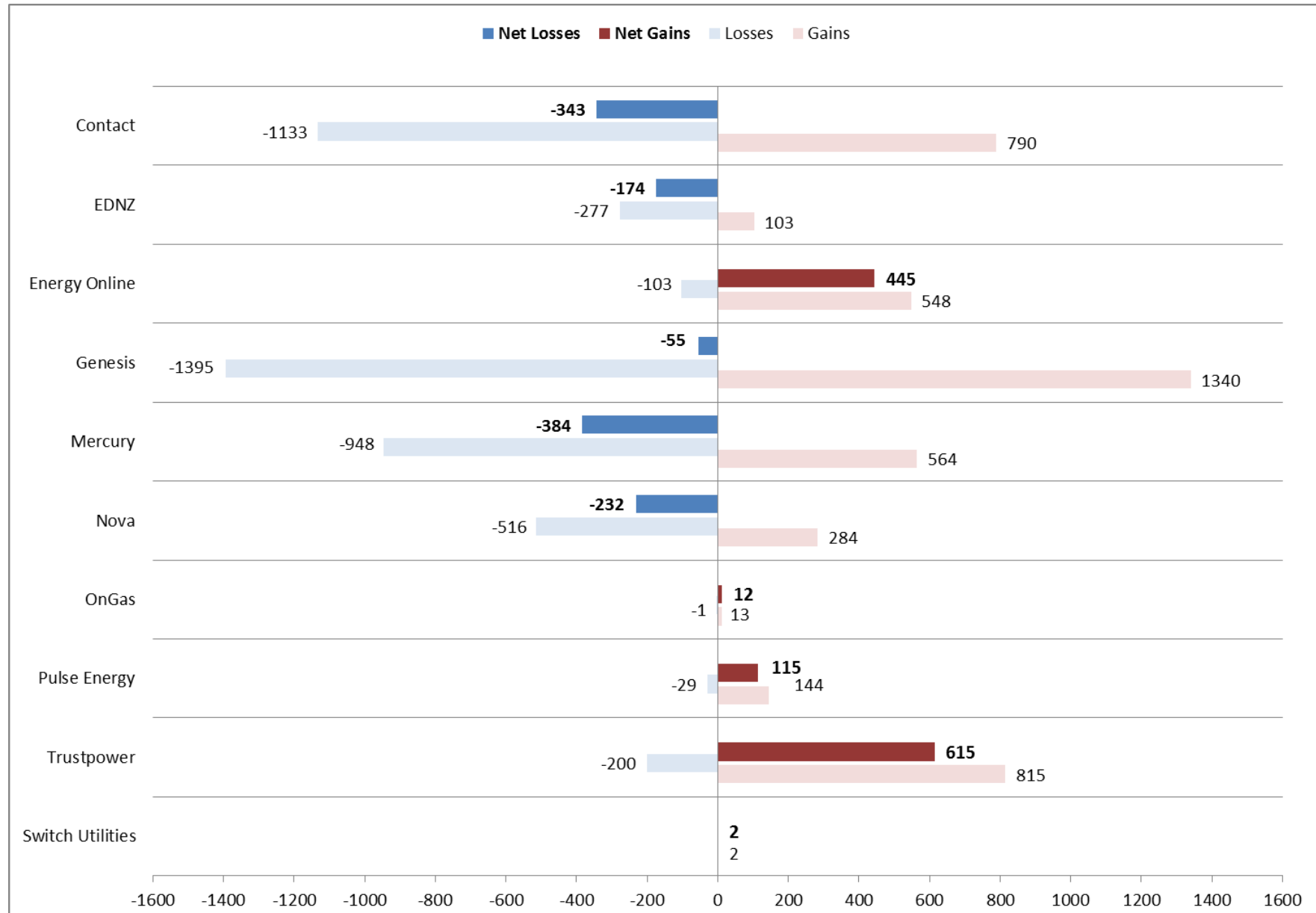
ICP enquiries processed in month (Online)	55,129
ICP enquiries processed in month (Offline)	19,244,316
Total ICP enquiries processed in month	19,299,445
ICPs added to the registry in month	533
ICPs changed in month	152,225
ICPs decommissioned in month	9
Valid standard switch requests (GNT-S) received in month	2,940
Valid move switch requests (GNT-SM) received in month	2,403
Valid switch requests (GNT) received in month	5,343
Valid switch acceptance notices (GAN) received in month	4,767
Valid switch transfer notices (GTN) received in month	4,603
Valid switch withdrawal requests (GNW) received in month	1,080
Valid switch withdrawal acceptances (GAW-A) received in month	1,047
Valid switch withdrawal rejections (GAW-R) received in month	31
Valid switch reading renegotiation requests (GNC) received in month	129
Valid switch reading renegotiation acceptances (GAC-A) received in month	115
Valid switch reading renegotiation rejections (GAC-R) received in month	22

Note: A switch transfer notice (GTN) is the last stage required to complete the switching process. This statistic indicates the number of switches completed in the month.

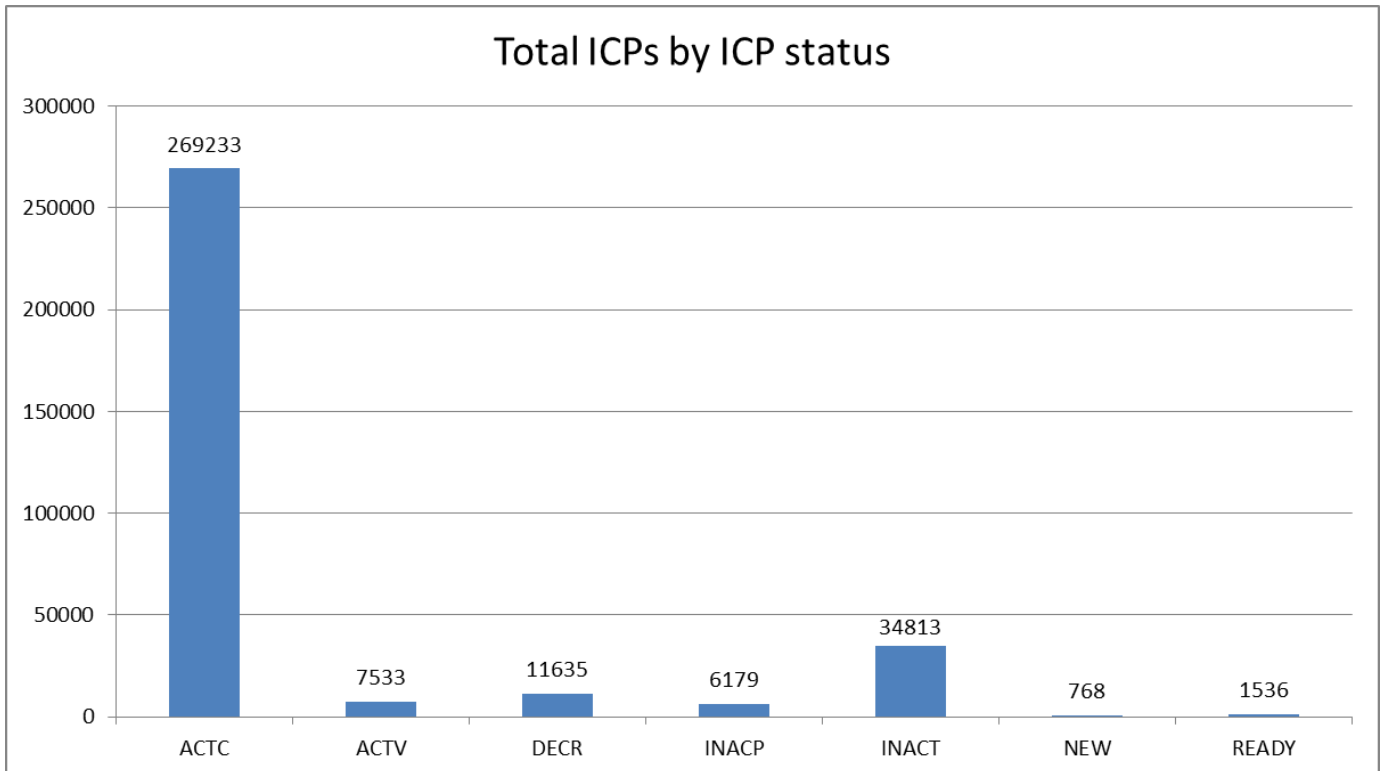
Switching activity – historical



Switching gains and losses – August 2015



ICPs by status – August 2015



Installation control points (ICPs) are the record of customer installations in the gas registry. The meaning of the ICP status codes are as follows:

ACTC—Active contracted (gas is able to flow and the customer has a contract with a retailer)

ACTV—Active vacant (gas is able to flow and the premises is vacant)

DECR—Decommissioned

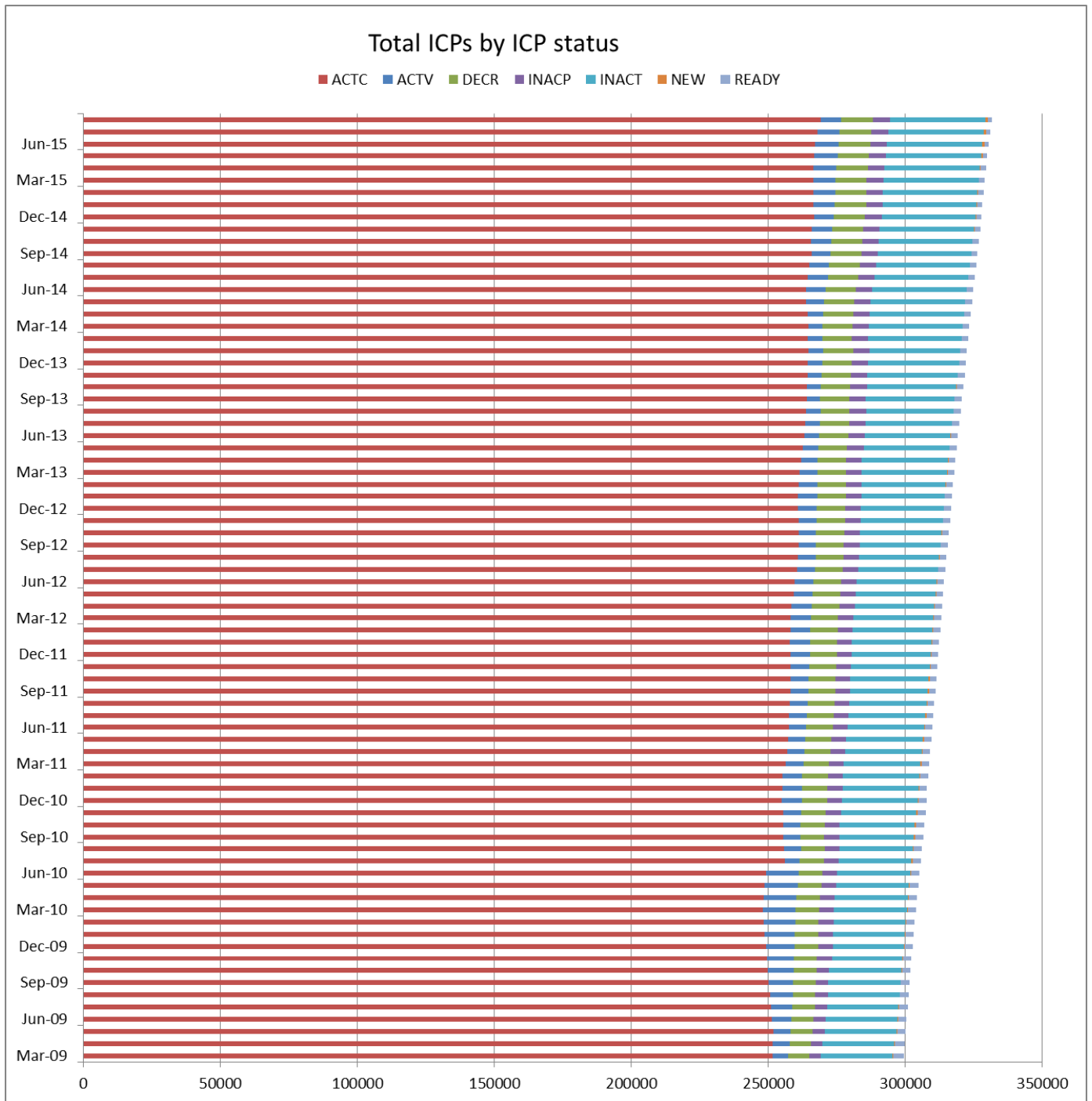
INACP—Inactive permanent (gas unable to flow due to a permanent disconnection)

INACT—Gas unable to flow due to a temporary disconnection

NEW—Newly created ICP, gas not yet able to flow

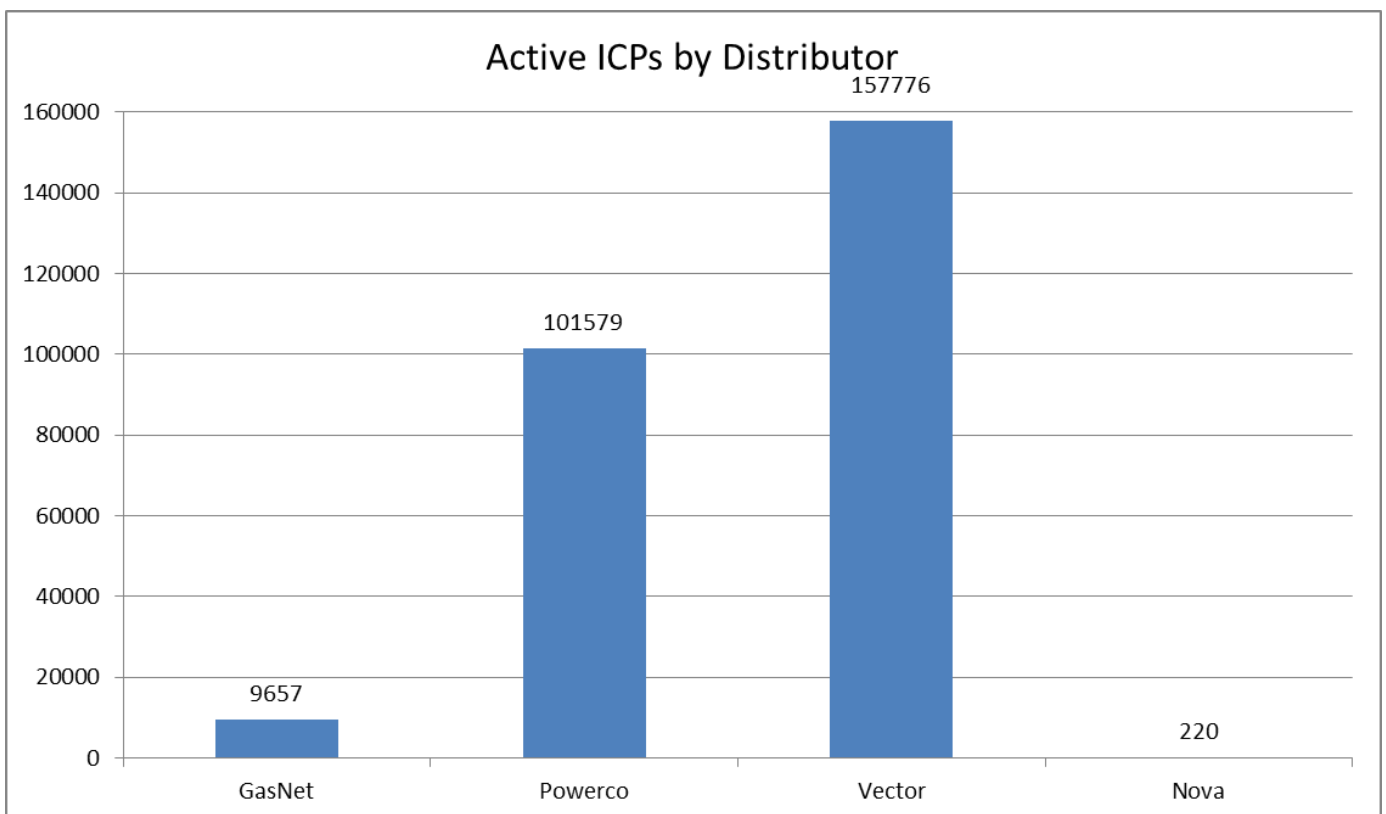
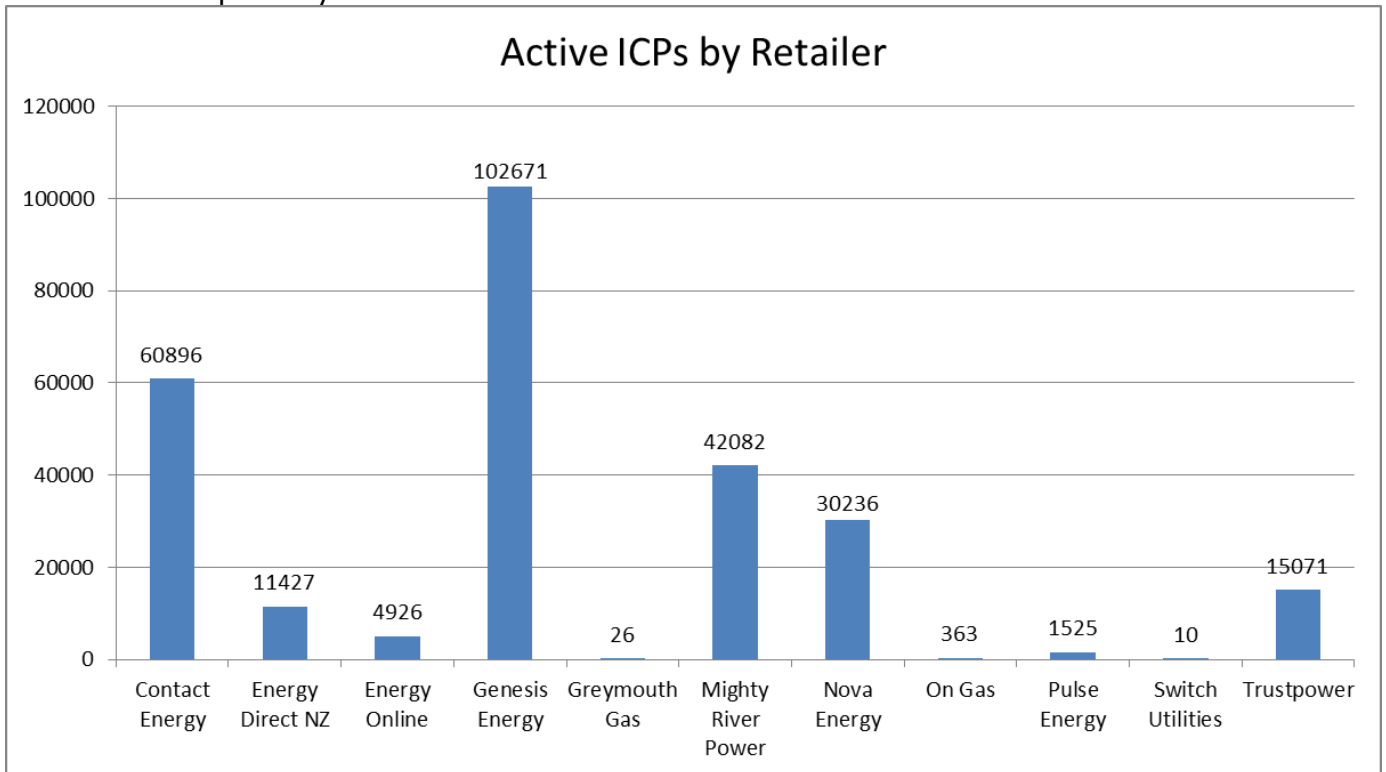
READY—New ICP, gas able to flow, awaiting uplift by retailer

ICPs by status – Historical

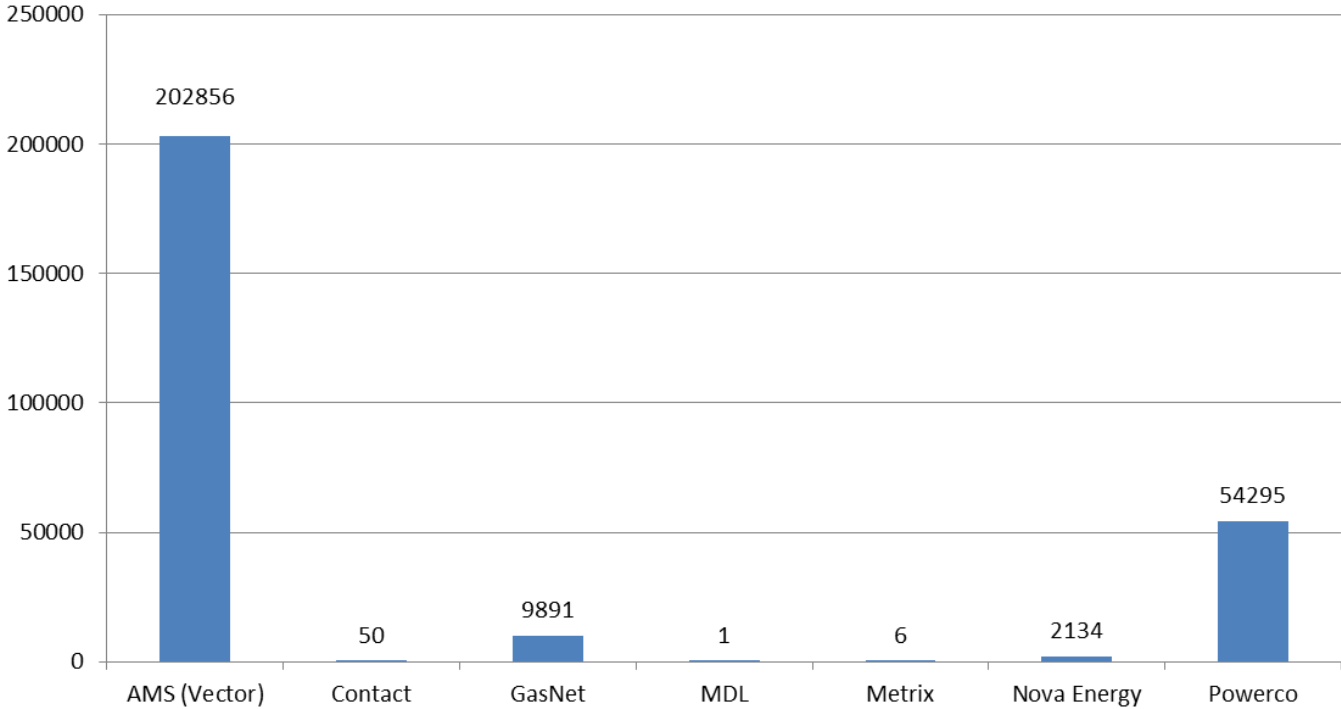


Market shares – August 2015

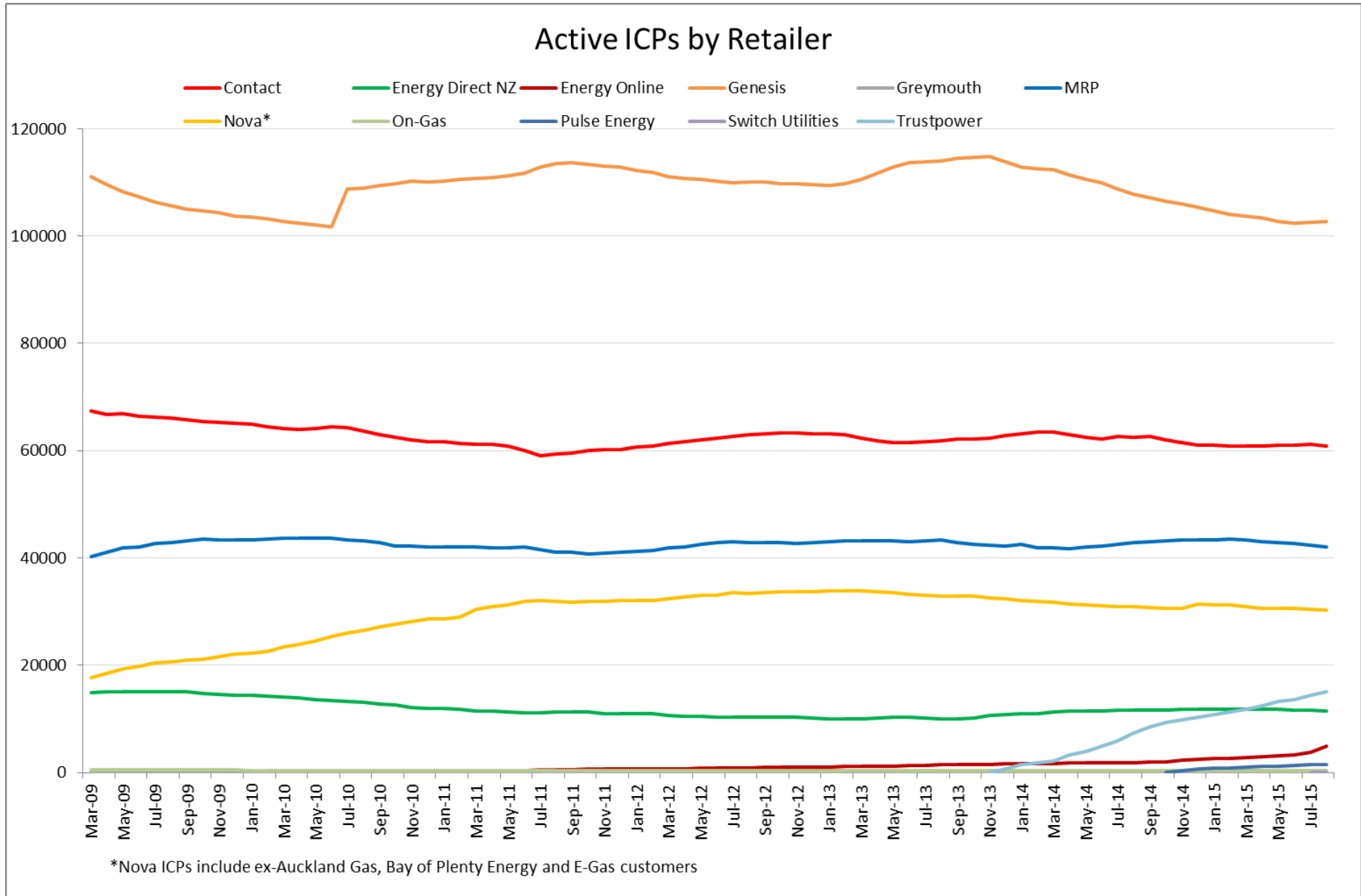
The following charts show the distribution of active-contracted ICPs by retailer, distribution company and meter owner respectively.



Active ICPs by meter owner

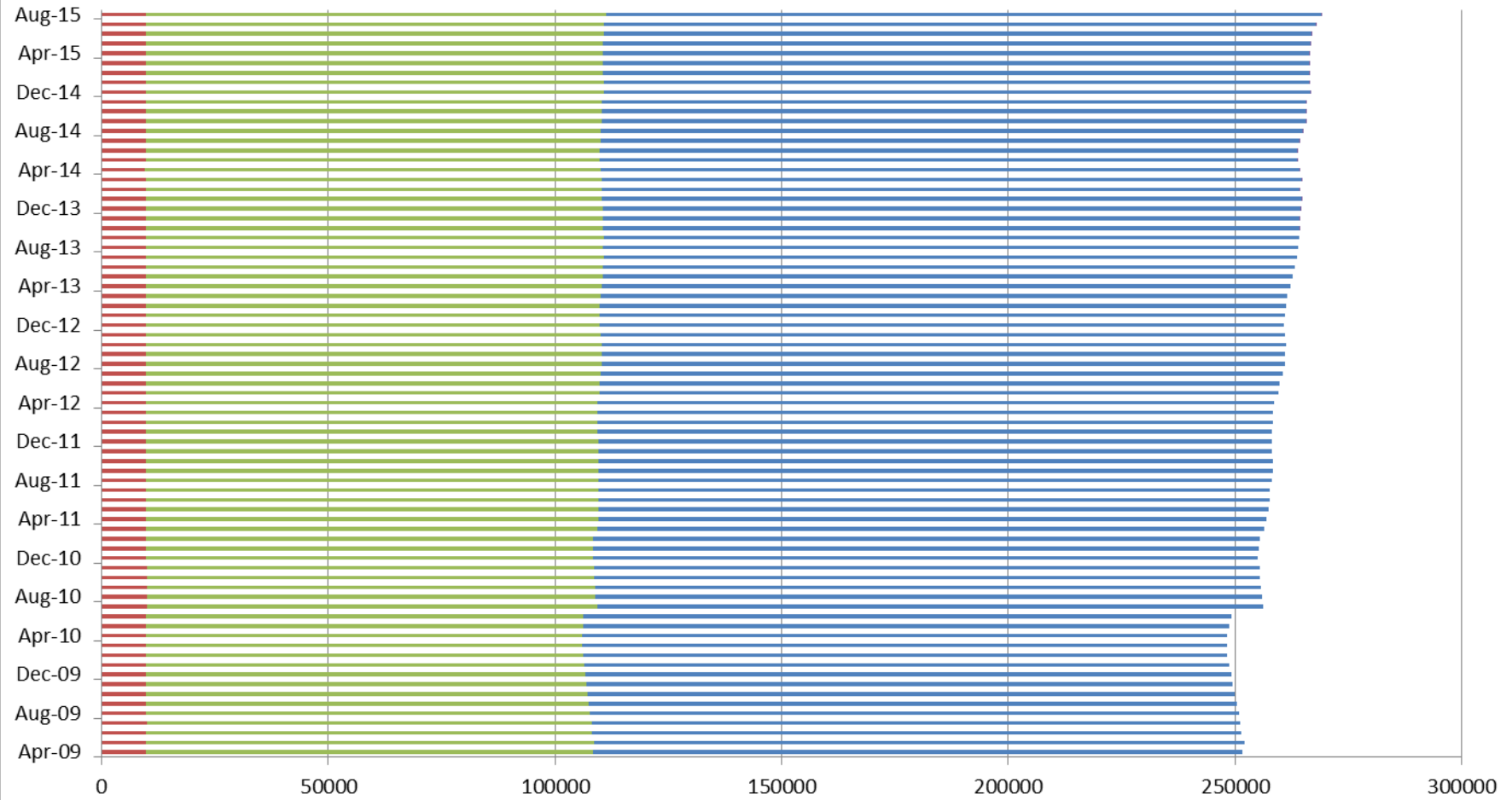


Market shares – historical



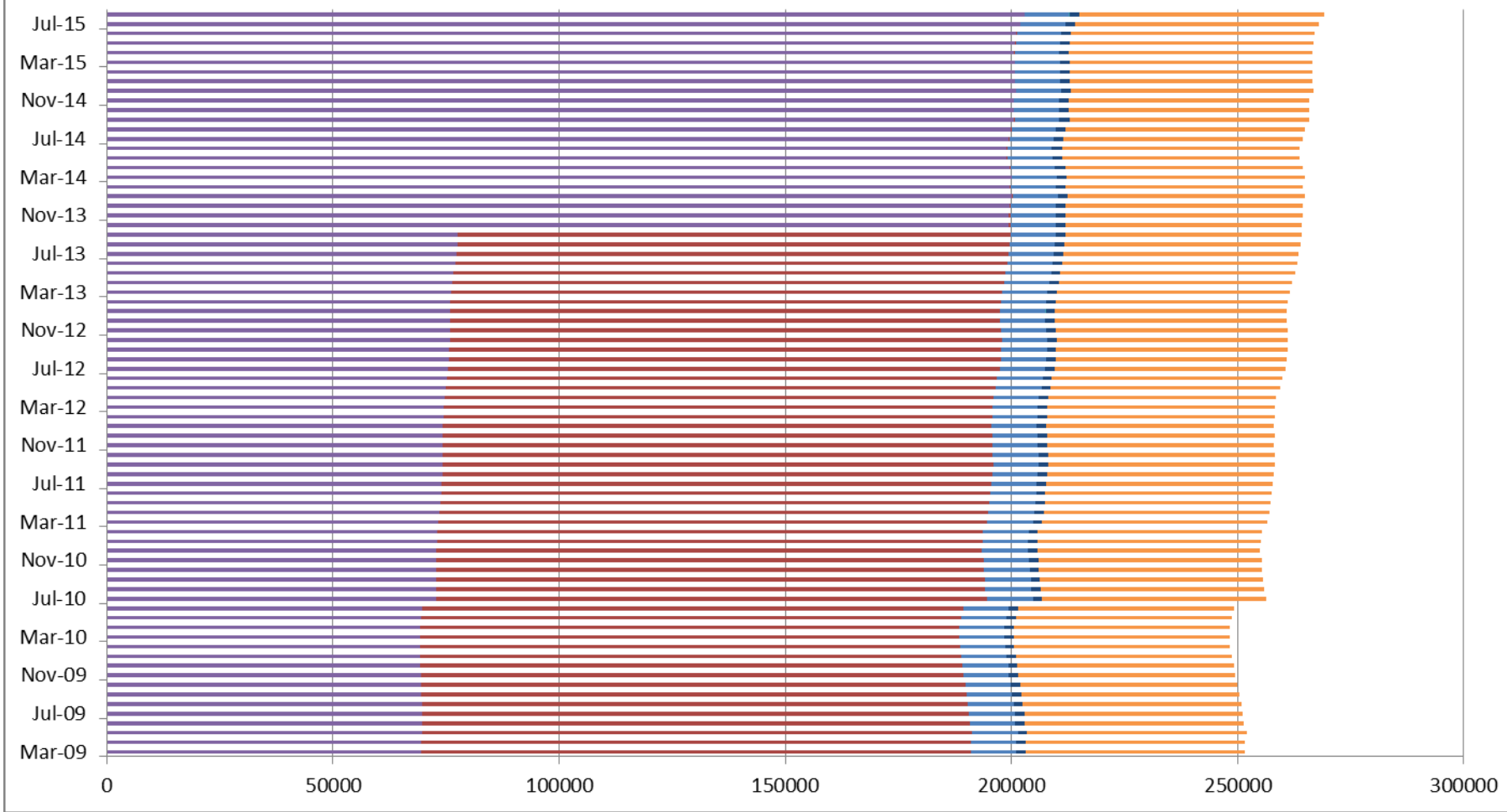
Active ICPs by Distributor

■ GasNet ■ Powerco ■ Vector ■ Nova



Active ICPs by Meter Owner

■ AMS (Vector) ■ Contact ■ GasNet ■ MDL ■ Metrix ■ Nova Energy ■ Powerco



Active-contracted ICPs by gas gate and retailer – August 2015

The following table shows the distribution of active-contracted ICPs by gas gate, and the distribution by retailer at each gas gate.

The responsible retailer codes are as follows:

CTCT—Contact Energy

EDNZ—Energy Direct NZ (Wanganui Gas)

GEND—Genesis Energy (TOU)

GENG—Genesis Energy

GEOL—Energy Online

GMTH—Greymouth Gas

GNGC—OnGas (Vector)

GNVG—Nova Energy

MEEN—Mercury Energy (Mighty River Power)

PUNZ—Pulse Energy

TRUS—Trustpower

The gas gate names associated with the codes used in the table can be found [here](#).

Gas Gate	CTCT	EDNZ	GEND	GENG	GEOL	GMTH	GNGC	GNVG	MEEN	PUNZ	SULG	TRUS	Total
ALF15501							1						1
ASH34301	48	27		52	2			50	33	2		2	216
BAL08201						1							1
BAL09626						1							1
BEL24510	2407	1413	7	14188	177		15	1537	1782	72		1267	22865
BMC17901	536	2	2	632	55		4	223	510	8		160	2132
BRO36301								1					1
CAM17201	269			1295	29		2	184	114	14		133	2040
DAN05001	68			13	2		1	27					111
DRU15101	36	1		15	4		5	23	23			1	108
EGC30701							1	2					3
EGC30702	1			2			1	3					7
ELM12301	40	18		153	1		3	64	35	2		6	322
FLB15601								26					26
FLD03001	326	190	3	523	10		1	454	135	17		17	1676
FLH21901	1	2		2									5
FOX22101	119	5		30	36			73	10	7		2	282
GIS07810	905	150	4	1488	55		2	340		42		151	3137
GLB03401			1										1
HAR11802				1			8						9
HEN74101	6795	23	6	8203	457	1	19	1405	4722	91		1643	23365
HPS02993			1										1
HRU16101			1	2			1	1					5
HST05203								11					11
HST05210	1972	192	2	439	709		11	768	223	45		122	4483
HTK08301	271	2		1113	22		4	38	118	3		254	1825
HTL16601	7		1	78			2	8	6	1		8	111
HTV11301	2762	12	10	17372	228		30	472	1736	93		2746	25461
HUN15301		1	1					1					3

Gas Gate	CTCT	EDNZ	GEND	GENG	GEOL	GMTH	GNGC	GNVG	MEEN	PUNZ	SULG	TRUS	Total
HUN15302								2					2
HWA20801	397	143		1301	20		1	507	349	21		20	2759
HWA20802								1					1
IGW11901	57	59		216	3			177	61	5		11	589
KAP12901				1			2						3
KAW04405	17	1		86	1			113	3	14		1	236
KAW04410							1						1
KAW04411							1						1
KIG16801	2				1			1	2				6
KIH19101	90		2	975	28		2	72	31	8		71	1279
KIN02601	1			3			2		1				7
KIN04310							1						1
KIW34201						1							1
KIW34202			1	1									2
KKI23701							1	1					2
KPA12401	8	3		32				9	6			2	60
KRG24101		1						2					3
KTK23901			1										1
KUK22401	5			17	3			4					29
KUP37503			1										1
KUR33601							1						1
LAB20201	17	45		38	1			8	8	1		1	119
LCF20010							1						1
LNB24301	77	19	2	127	4		3	41	18			4	295
LVN24401	1237	73	1	440	303		3	525	57	39		38	2716
MGK05401						1							1
MMU08001	200	2	6	1574	32	2	3	433	191	5		1662	4110
MNA23402	20	18	1	106	1			47	45	2		2	242
MNG34001			1										1

Gas Gate	CTCT	EDNZ	GEND	GENG	GEOL	GMTH	GNGC	GNVG	MEEN	PUNZ	SULG	TRUS	Total
MRV16301							1						1
MRV16302	89			444	1			79	75	3		22	713
MSD01801								1					1
MSD01802							1						1
MTG17301				28	2				1	1		5	37
MTN23801	49	145		142	4		1	35	66	9		2	453
MTP20601	1			5									6
MUT19001							1						1
NGW14501	25			96	2			5	14			12	154
NPL12101	1190	961	1	4397	69		7	3486	945	96		213	11365
OKA13201	7	4		26				18	8			1	64
OKS32801								1	1				2
OKU16701	15	25		104	3			74	44	1		7	273
OPK13001	17	8		91	2			35	31			1	185
OPO32001	5			51				46		2		1	105
ORD24701	1	1						1					3
OTA22601	76	10		191	37			53	9	11		3	390
OTB00301	1												1
OTO14101	1			143	2			13				6	165
PAH23101				4									4
PAH23201	8	10		46				3	4			2	73
PAP06610	4708	7	9	1938	250	2	37	843	3754	27		261	11836
PAU20101	720	84		1738	253		3	380	63	87		30	3358
PGH15901				10				1	3			1	15
PHT04901	29			33				14	5			1	82
PHT04902							1						1
PIR31101	4			30	1				4	2		4	45
PLN24201	3132	1354	3	4760	140		17	4151	906	154		178	14795
PPA33201	12			52				12	12			44	132

Gas Gate	CTCT	EDNZ	GEND	GENG	GEOL	GMTH	GNGC	GNVG	MEEN	PUNZ	SULG	TRUS	Total
PTA20901	14	16		106			1	26	16	5		2	186
PTR32601	35	1		234	3		1	25	30	4		10	343
PUK04201	69		1	44	39		2	68	40			6	269
PYE36601	4							1	1			6	12
RAG33401							1						1
RAM15201	1						2						3
ROT08101	483	48		1892	119		11	685	390	106		66	3800
RPR30801				17			1	4	2				24
STR10201	97	47		461	5			202	71	11		15	909
TAC31001							1						1
TAT16401						1							1
TAU07001	495	23		1010	28		2	372	108	27		54	2119
TAW31004	9			45	1		1	10		1		11	78
TCC00201	1												1
THO22701	2			8	2			1					13
TIR33501							1						1
TIR33502	7			43				15	4			1	70
TKN17001	3			129	1			12	1			2	148
TKP05101								1					1
TKR19701	119			651	5		3	96	47	17		50	988
TKS17401	2			17		2		2					23
TPK33301	8	1	1	242	3			55	15	1		264	590
TRC02003	1												1
TRG07701	187	1	1	1675	61		3	626	177	7		1893	4631
TTK30601	1			4				1					6
TUK06502	3		2	1			1	3	5				15
TWA35610	7451	1829	10	10273	257		34	4991	3099	64	7	1371	29386
TWB24810								180					180
WAG21501	627	3845	1	3168	58	1	8	277	895	168		31	9079

Gas Gate	CTCT	EDNZ	GEND	GENG	GEOL	GMTH	GNGC	GNVG	MEEN	PUNZ	SULG	TRUS	Total
WAK22802	271	37		825	104			128	17	42		21	1445
WEL18301	1			14	1			1	4			3	24
WHG07501	162	3	2	652	10		2	158	175	10		1	1175
WHK32101	30		1	124	3	1	2	267	5	4		2	439
WKE19201			1										1
WRK18901	42			111	2		1	31	54	1		17	259
WST03610	20299	21	15	9987	1112	11	70	4154	19301	106	3	1381	56460
WTA16501	2			29		1	4	2	2			2	42
WTG06910	775	424	2	3923	62		4	397	476	45		353	6461
WTK33901	823	3	1	1628	96		2	150	880	15		362	3960
WTK33902	1												1
WTR12001	89	117		402	4		2	390	100	6		29	1139
WTT20301							1						1
WVY23601	1			3					3				7
Grand Total	60896	11427	106	102565	4926	26	363	30236	42082	1525	10	15071	269233