

Gas Registry Statistics – July 2014

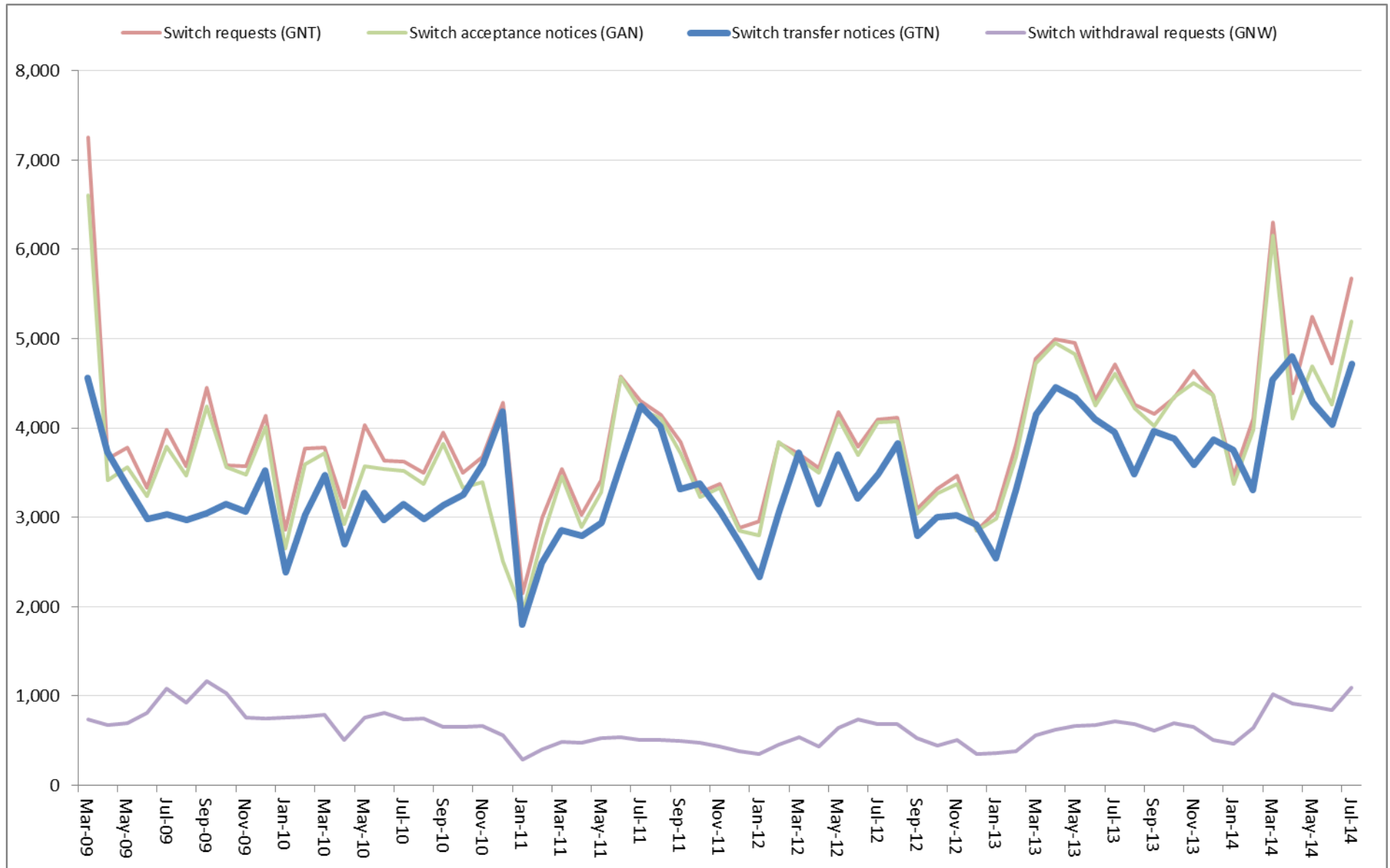
The following report provides statistics and charts illustrating gas registry usage, switching volumes and breakdowns of retailer, distributor and meter owner market shares. The information is provided in accordance with version 1.2 of the Determinations by the Industry Body (Gas Industry Co) under the Gas (Switching Arrangements) Rules 2008, dated 20 February 2009.

Summary registry statistics – July 2014

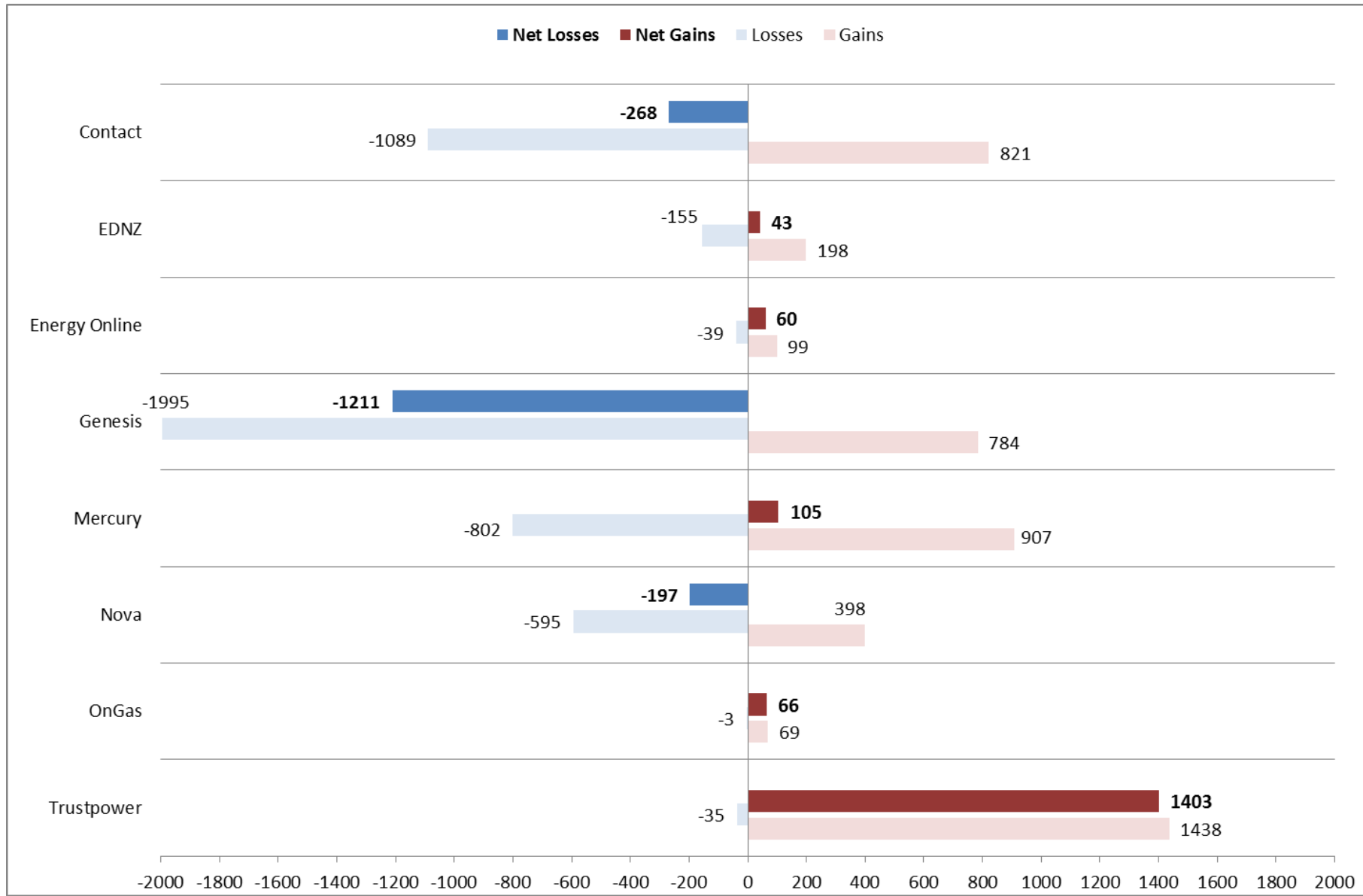
ICP enquiries processed in month (Online)	42,425
ICP enquiries processed in month (Offline)	6,907,784
Total ICP enquiries processed in month	6,950,209
ICPs added to the registry in month	496
ICPs changed in month	1,650
ICPs decommissioned in month	20
Valid standard switch requests (GNT-S) received in month	3,497
Valid move switch requests (GNT-SM) received in month	2,175
Valid switch requests (GNT) received in month	5,672
Valid switch acceptance notices (GAN) received in month	5,192
Valid switch transfer notices (GTN) received in month	4,714
Valid switch withdrawal requests (GNW) received in month	1,089
Valid switch withdrawal acceptances (GAW-A) received in month	1,076
Valid switch withdrawal rejections (GAW-R) received in month	31
Valid switch reading renegotiation requests (GNC) received in month	63
Valid switch reading renegotiation acceptances (GAC-A) received in month	54
Valid switch reading renegotiation rejections (GAC-R) received in month	11

Note: A switch transfer notice (GTN) is the last stage required to complete the switching process. This statistic indicates the number of switches completed in the month.

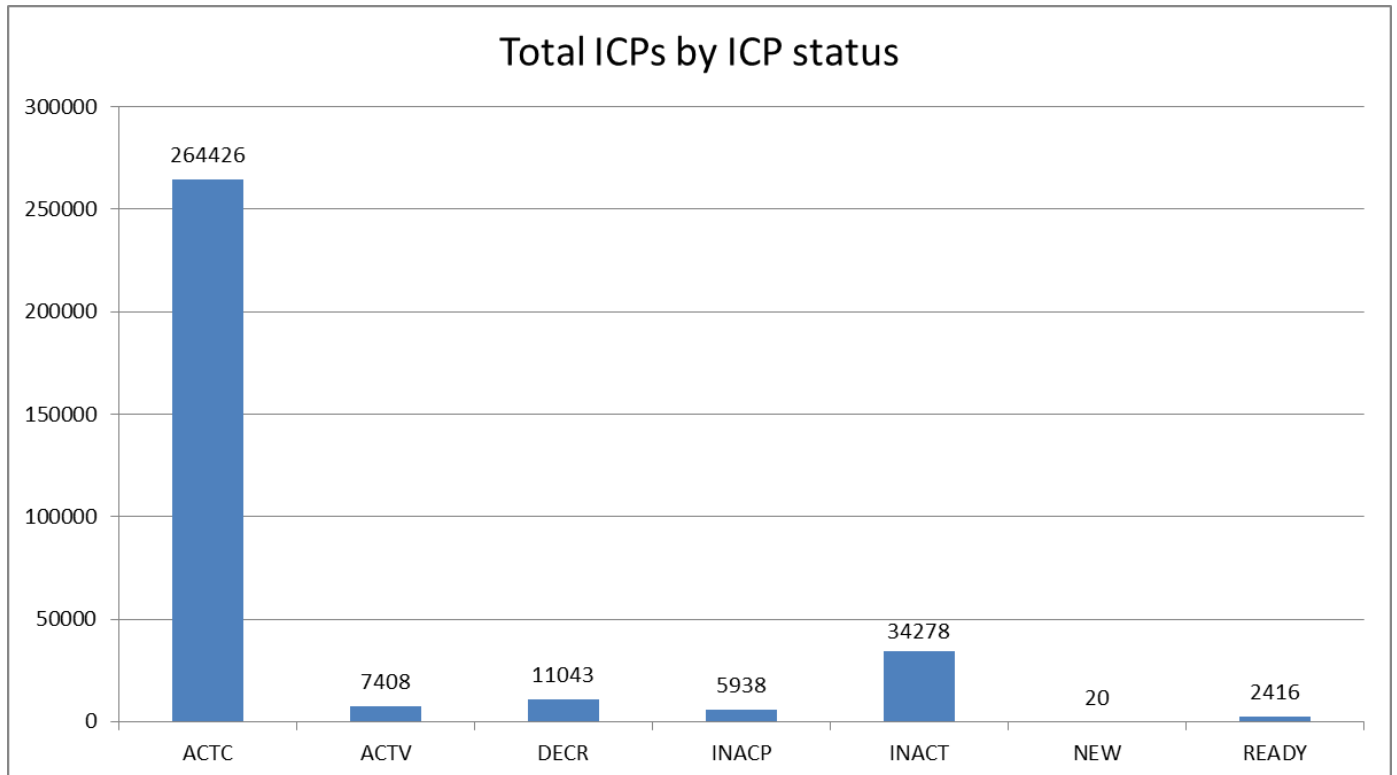
Switching activity – historical



Switching gains and losses – July 2014



ICPs by status – July 2014



Installation control points (ICPs) are the record of customer installations in the gas registry. The meaning of the ICP status codes are as follows:

ACTC—Active contracted (gas is able to flow and the customer has a contract with a retailer)

ACTV—Active vacant (gas is able to flow and the premises is vacant)

DECR—Decommissioned

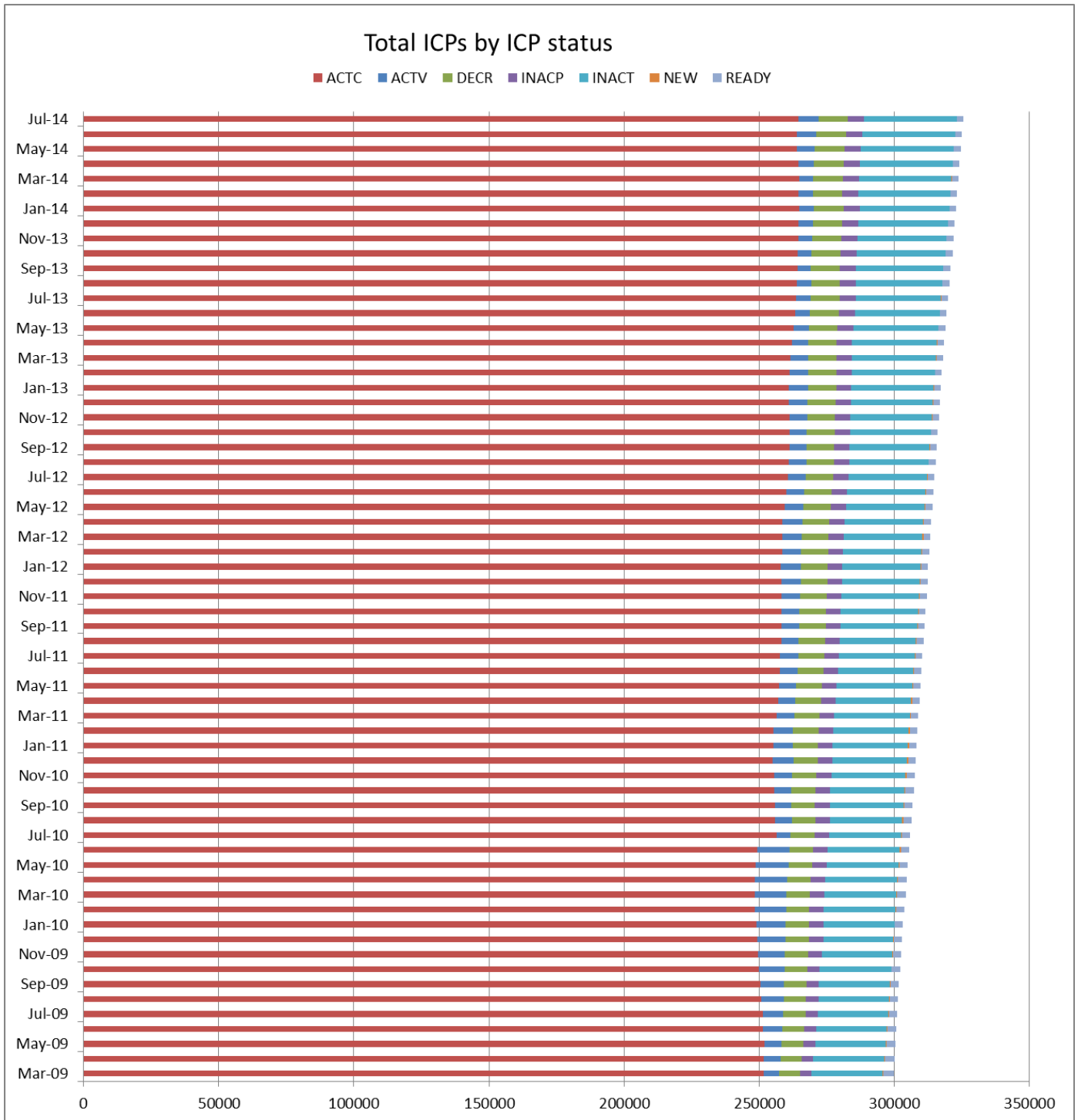
INACP—Inactive permanent (gas unable to flow due to a permanent disconnection)

INACT—Gas unable to flow due to a temporary disconnection

NEW—Newly created ICP, gas not yet able to flow

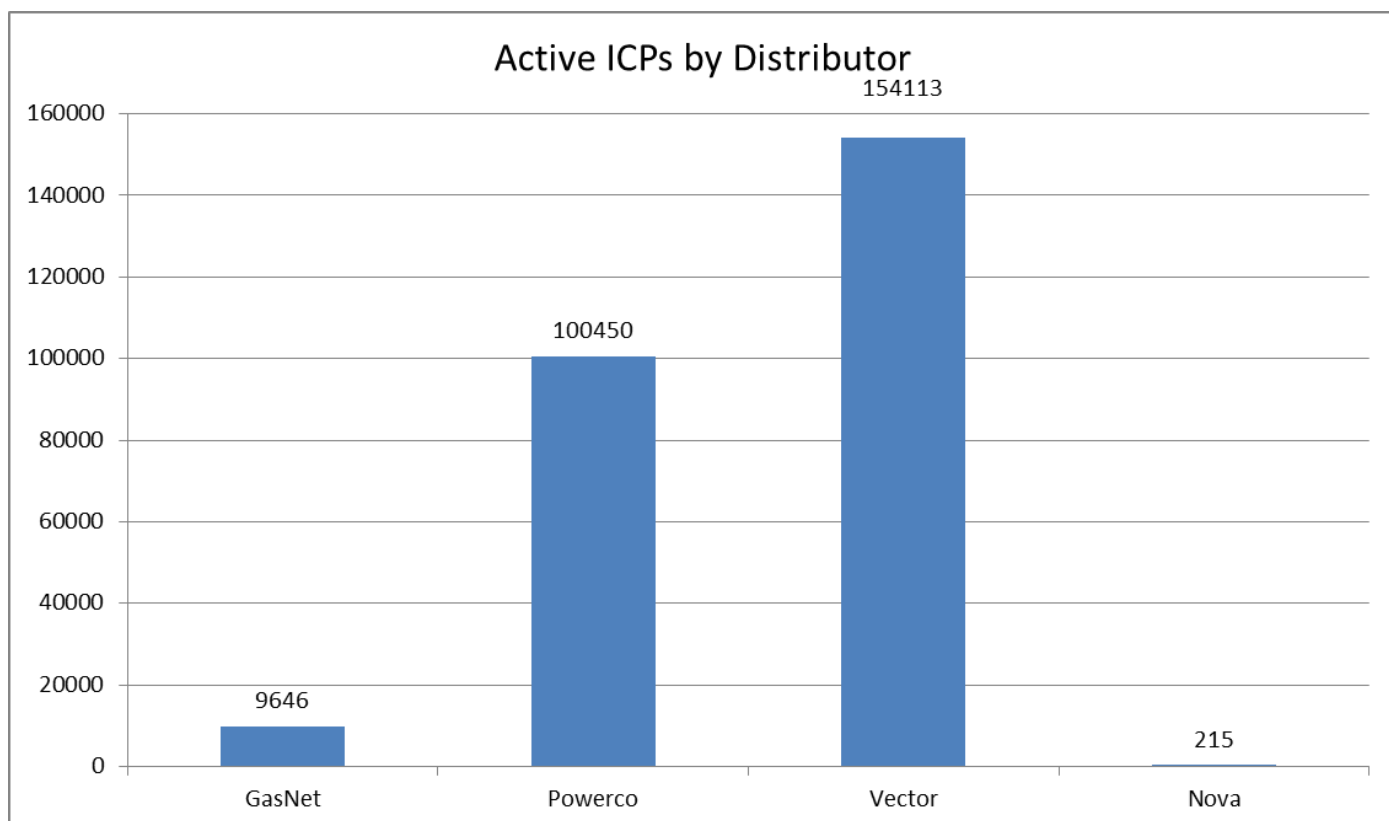
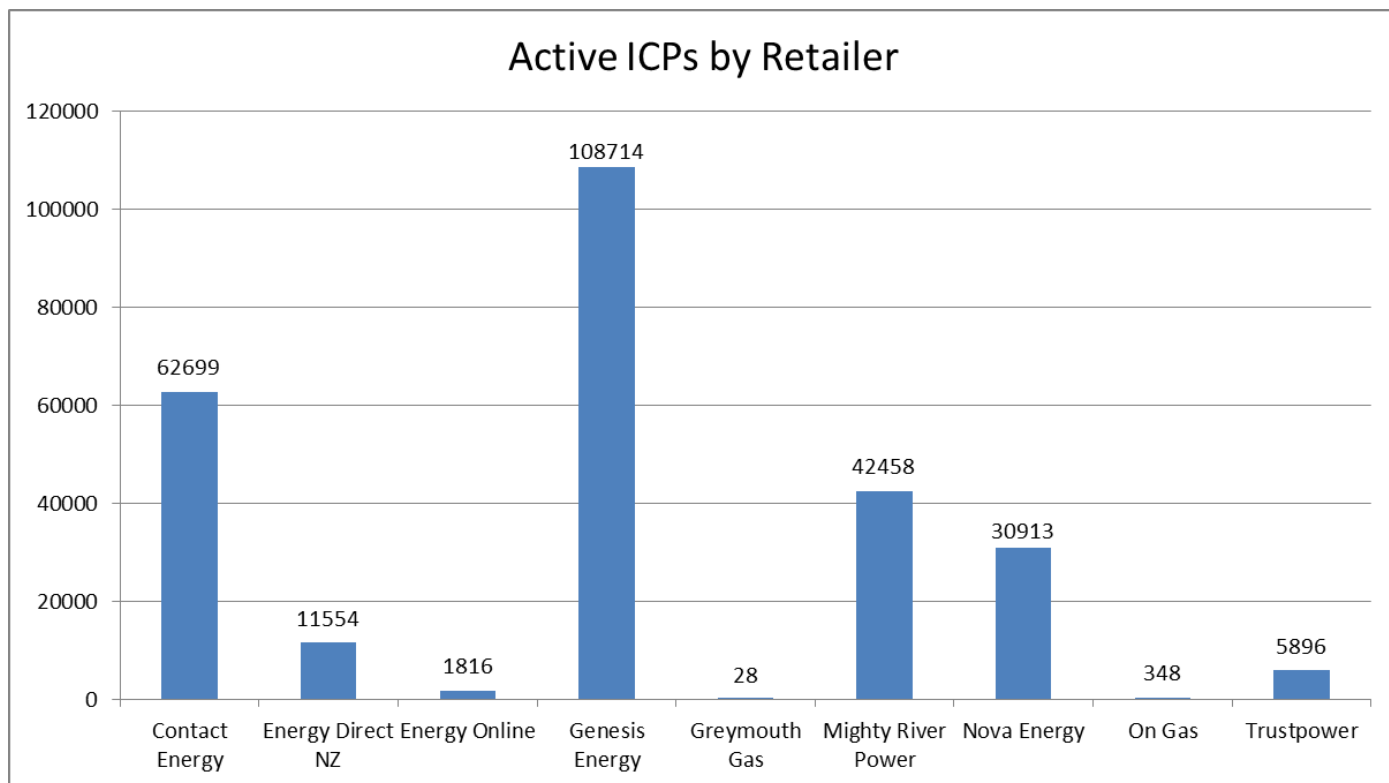
READY—New ICP, gas able to flow, awaiting uplift by retailer

ICPs by status – Historical

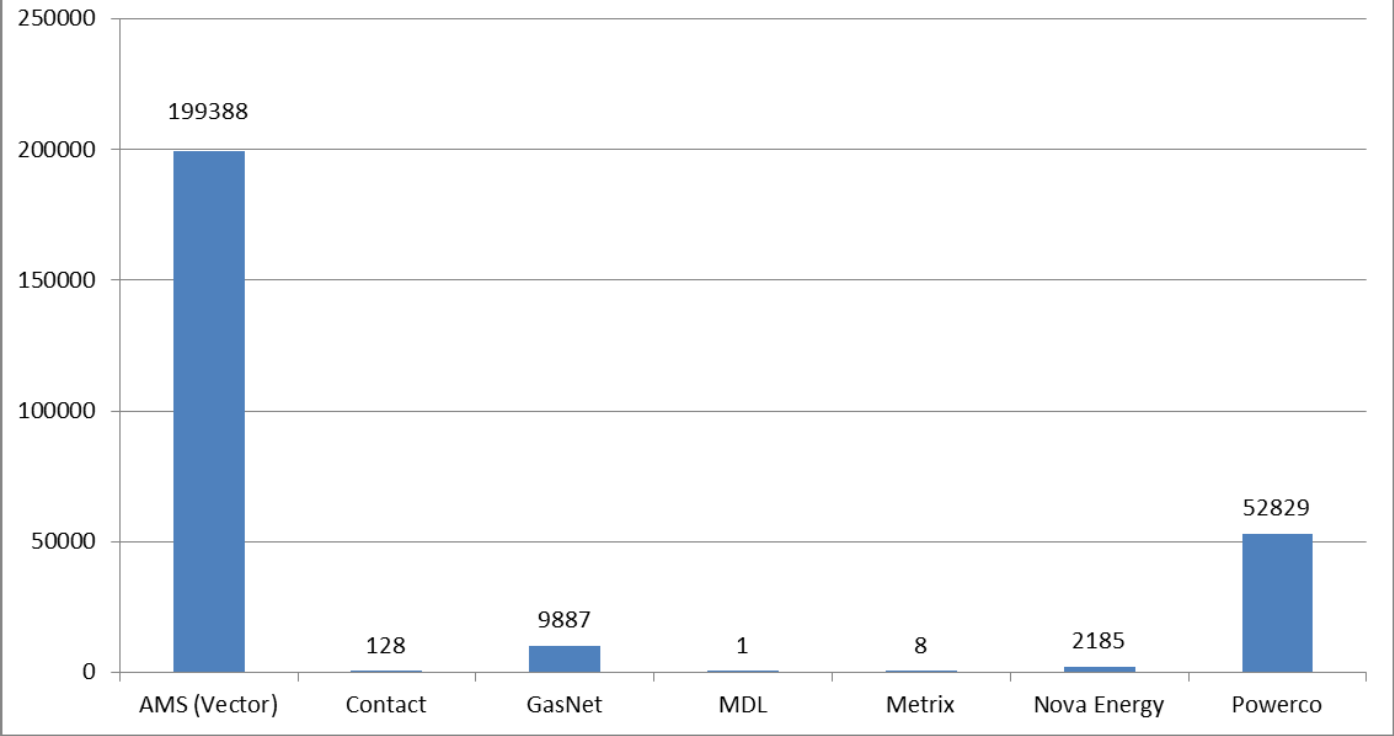


Market shares – July 2014

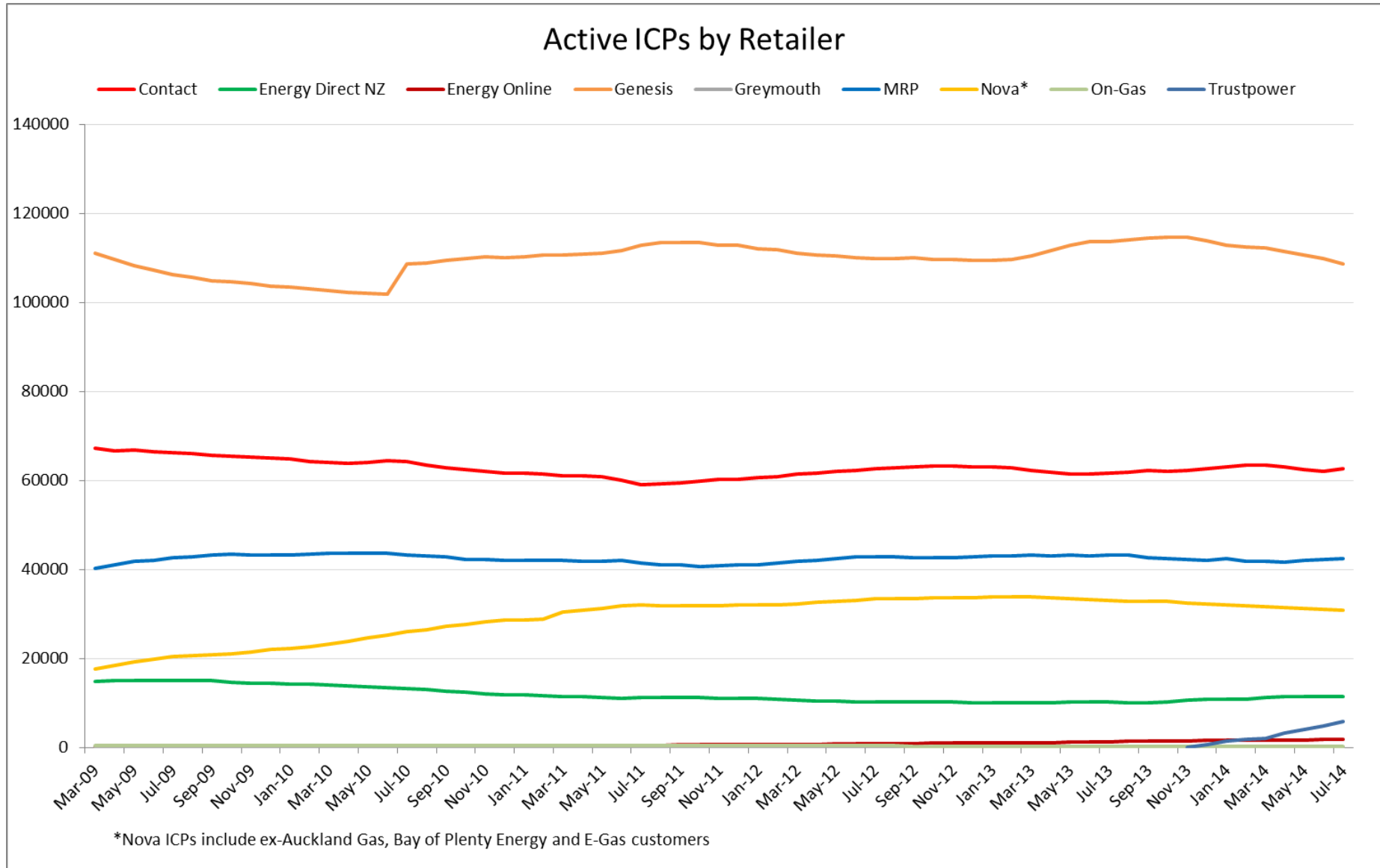
The following charts show the distribution of active-contracted ICPs by retailer, distribution company and meter owner respectively.



Active ICPs by meter owner

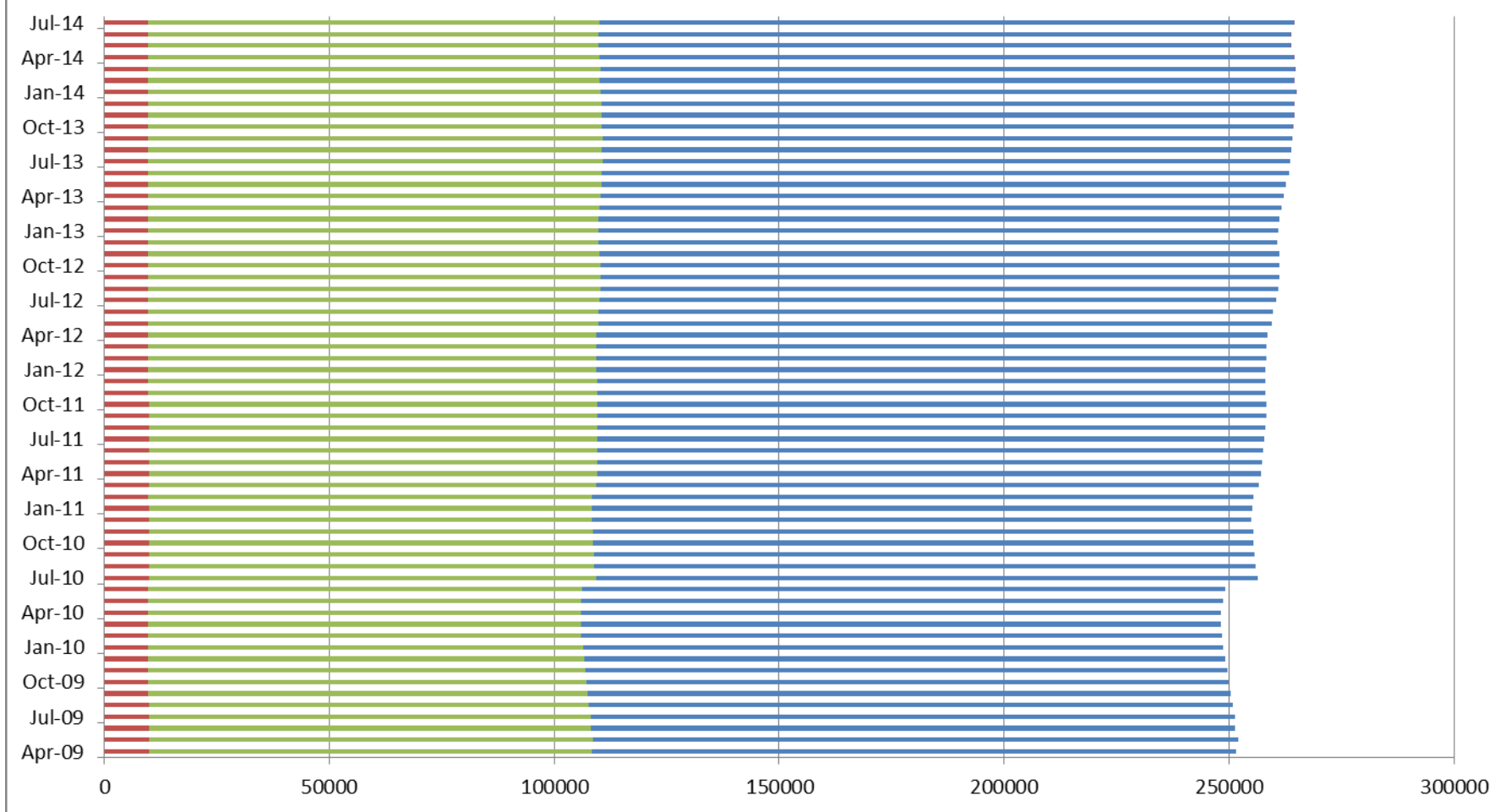


Market shares – historical



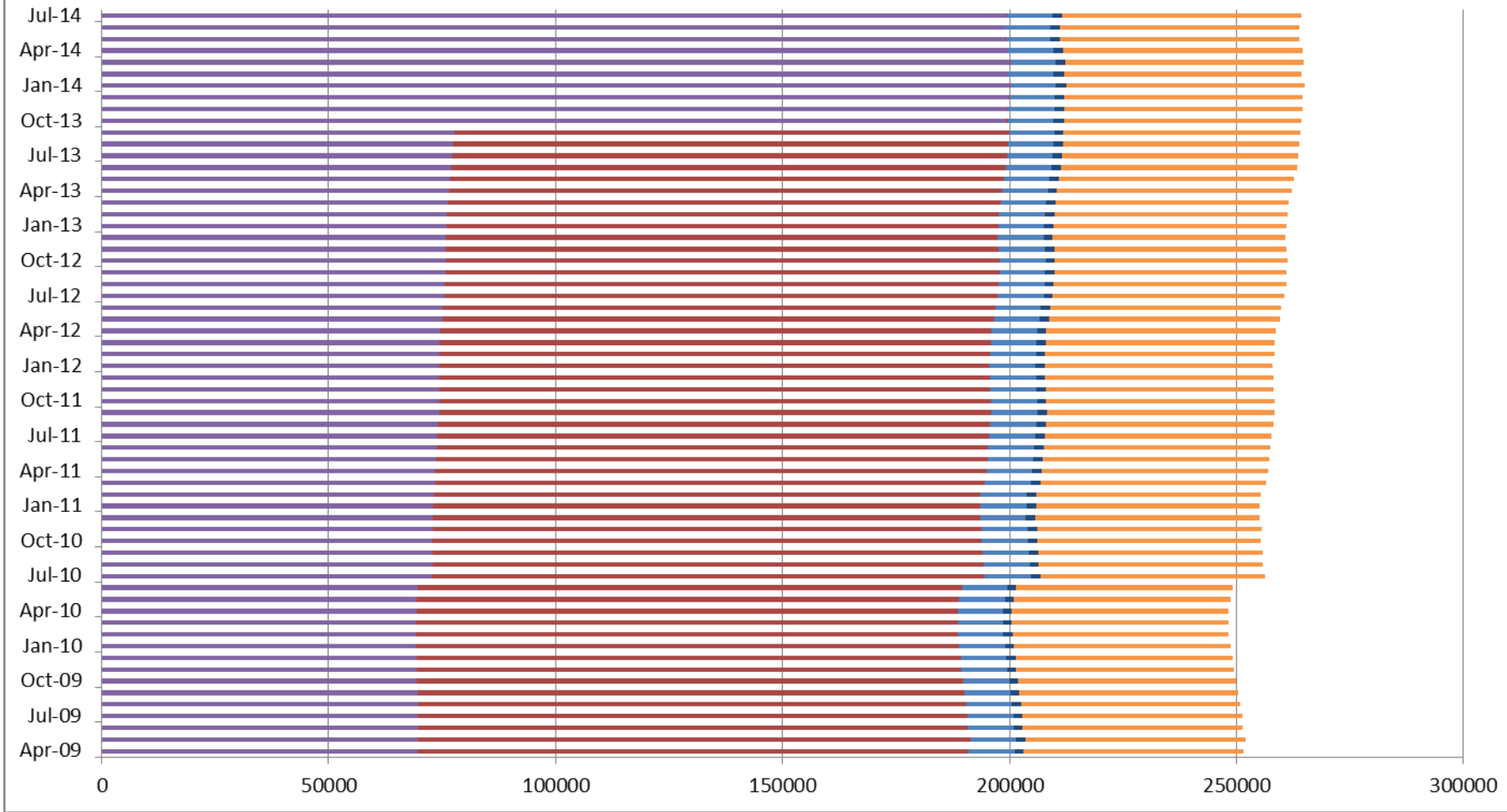
Active ICPs by Distributor

■ GasNet ■ Powerco ■ Vector ■ Nova



Active ICPs by Meter Owner

AMS (Vector) Contact GasNet MDL Metrix Nova Energy Powerco



Active-contracted ICPs by gas gate and retailer – July 2014

The following table shows the distribution of active-contracted ICPs by gas gate, and the distribution by retailer at each gas gate.

The responsible retailer codes are as follows:

CTCT—Contact Energy

EDNZ—Energy Direct NZ (Wanganui Gas)

GEND—Genesis Energy (TOU)

GENG—Genesis Energy

GEOL—Energy Online

GMTH—Greymouth Gas

GNGC—OnGas (Vector)

GNVG—Nova Energy

MEEN—Mercury Energy (Mighty River Power)

TRUS—Trustpower

The gas gate names associated with the codes used in the table can be found here:

http://gasindustry.co.nz/sites/default/files/u14/20120301_all_gas_gates.pdf

Gas Gate	CTCT	EDNZ	GEND	GENG	GEOL	GMTH	GNGC	GNVG	MEEN	TRUS	Total
ALF15501							1				1
ASH34301	46	32		57				46	32	2	215
BAL08201						1					1
BAL09626						1					1
BEL24510	2477	1281	5	14861	49		14	1593	1966	437	22683
BMC17901	534	2	2	644	42		5	226	545	6	2006
BRO36301							1				1
CAM17201	237			1460	16		1	45	128	62	1949
DAN05001	68			9			1	27			105
DRU15101	9			4				9	4		26
DRU15102	26			18	5		5	7	18		79
EGC30701	1							2			3
EGC30702	2			1				3			6
ELM12301	37	18		154			3	76	40		328
FLB15601								27			27
FLD03001	342	180	3	525	3		1	466	154	7	1681
FLH21901	2	2									4
FOX22101	141	5		27	18			75	13		279
GIS07810	1047	177	4	1633			2	243		57	3163
GLB03401			1								1
HAR11801				1			8				9
HEN74101	7079	10	6	8411	203	1	18	1502	5029	267	22526
HPS02993			1								1
HRU16101			1	2			1	1			5
HST05203								11			11

Gas Gate	CTCT	EDNZ	GEND	GENG	GEOL	GMTH	GNGC	GNVG	MEEN	TRUS	Total
HST05210	2345	227	2	463	454		11	874	1	9	4386
HTK08301	222	3		974			2	23	79	74	1377
HTL16601	6		1	86			3	7	3	5	111
HTV11301	2980	5	8	19084			33	457	1735	1331	25633
HUN15301		1	1	1				1			4
HUN15302								2			2
HWA20801	379	165		1293	5		1	555	338	4	2740
HWA20802								1			1
IGW11901	53	58		224	1			173	61	9	579
KAP12901	2			2							4
KAW04405	15	1		92				127	2	1	238
KAW04410							1				1
KAW04411							1				1
KIG16801	2			1				1	1		5
KIH19101	90		1	1072	13			46	37	39	1298
KIN02601	1			3			2		1		7
KIN04310							1				1
KIW34201						1					1
KIW34202			1	1							2
KKI23701							1	1			2
KPA12401	6	4		37				6	3	1	57
KRG24101		1						2			3
KTK23901			1								1
KUK22401	7			17	1			4			29
KUP37503			1								1
KUR33601							1				1

Gas Gate	CTCT	EDNZ	GEND	GENG	GEOL	GMTH	GNGC	GNVG	MEEN	TRUS	Total
LAB20201	17	49		38				10	2		116
LCF20010	1										1
LNB24301	68	25	2	118	1		3	44	20	1	282
LVN24401	1407	92	1	461	186		3	508	70	7	2735
MGK05401						1					1
MMU08001	223	1	5	2102		2	3	515	226	1050	4127
MNA23402	19	21	1	110				51	35	1	238
MNG34001			1								1
MRV16301	1										1
MRV16302	83			489	1			43	76	10	702
MSD01801			1								1
MSD01802							1				1
MTG17301	1			34						1	36
MTN23801	49	166		129	3		1	39	58		445
MTP20601	1			5							6
MUT19001							1				1
NGW14501	27			106				3	8	7	151
NPL12101	1024	1028	2	4515	19		4	3652	848	106	11198
NPS00530	1										1
OKA13201	6	6		24				17	10		63
OKS32801								1	1		2
OKU16701	17	26		100	1			77	39	3	263
OPK13001	18	8		93	2			28	29	1	179
OPO32001	8			49				50			107
ORD24701	1	1						1			3
OTA22601	81	8		239	13			33	9	1	384

Gas Gate	CTCT	EDNZ	GEND	GENG	GEOL	GMTH	GNGC	GNVG	MEEN	TRUS	Total
OTB00301	1										1
OTO14101	1			156				12		1	170
PAH23101		1		4							5
PAH23201	6	5		29				2	4	1	47
PAP06604	173		1	91	44			17	126	6	458
PAP06610	4521	7	6	1624	64	2	43	841	3419	19	10546
PAU20101	731	89		2052	80		3	258	74	2	3289
PGH15901				11				1	3		15
PHT04901	33			35			1	13	4		86
PIR31101	3			37	1				5	2	48
PLN24201	3023	1425	3	4919	37		16	4356	1013	28	14820
PPA33201	11			43				12	8	20	94
PTA20901	16	18		101			1	31	19		186
PTR32601	39	1		247			1	22	22	8	340
PUK04201	56		1	27	24			60	27		195
PYE36601	4							1	1	4	10
RAG33401							1				1
RAM15201	1						2				3
ROT08101	450	52		2182			13	601	476	42	3816
RPR30801	2			18				3	1		24
STR10201	73	54	1	478				226	65	10	907
TAC31001							1				1
TAT16401						1					1
TAU07001	470	26		1097			2	338	119	26	2078
TAW31004	6			42			1	3	1	3	56
TCC00201	1										1

Gas Gate	CTCT	EDNZ	GEND	GENG	GEOL	GMTH	GNGC	GNVG	MEEN	TRUS	Total
THO22701	2			8	2			2			14
TIR33501	1										1
TIR33502	10			46				12	5		73
TKN17001	3			136				8			147
TKP05101								1			1
TKR19701	121			706	1		2	77	48	27	982
TKS17401	2			16		2		2			22
TPK33301	9	1	1	335				66	18	170	600
TRC02003	1										1
TRG07701	250	1	1	2213	1		3	749	207	1130	4555
TTK30601				4				1	1		6
TUK06501	3		1	1				3	4		12
TWA35610	7779	1543	10	10414	82		33	5417	3160	457	28895
TWB24810								174			174
WAG21501	619	4176	1	3215	22	1	8	246	776	16	9080
WAK22801	272	43		990	47			71	18	1	1442
WEL18301	2			14				2	4		22
WHG07501	146	4	2	778			2	98	147		1177
WHK32101	22		1	124			3	279	9	1	439
WKE19201			1								1
WRK18901	40			127			1	22	65	1	256
WST03610	20951	22	14	10347	311	14	66	4227	19433	237	55622
WTA16501	3			30		1	4		1	5	44
WTG06910	737	355	2	4133	28		3	429	514	124	6325
WTK33901	646		1	1367	27		1	74	765	32	2913
WTK33902	158			239	9			56	176	11	649

Gas Gate	CTCT	EDNZ	GEND	GENG	GEOL	GMTH	GNGC	GNVG	MEEN	TRUS	Total
WTR12001	90	128		408			2	389	97	13	1127
WTT20301							1				1
WVY23601	2		1	1					2		6
Grand Total	62699	11554	100	108614	1816	28	348	30913	42458	5896	264426