

# Gas Registry Statistics – June 2014

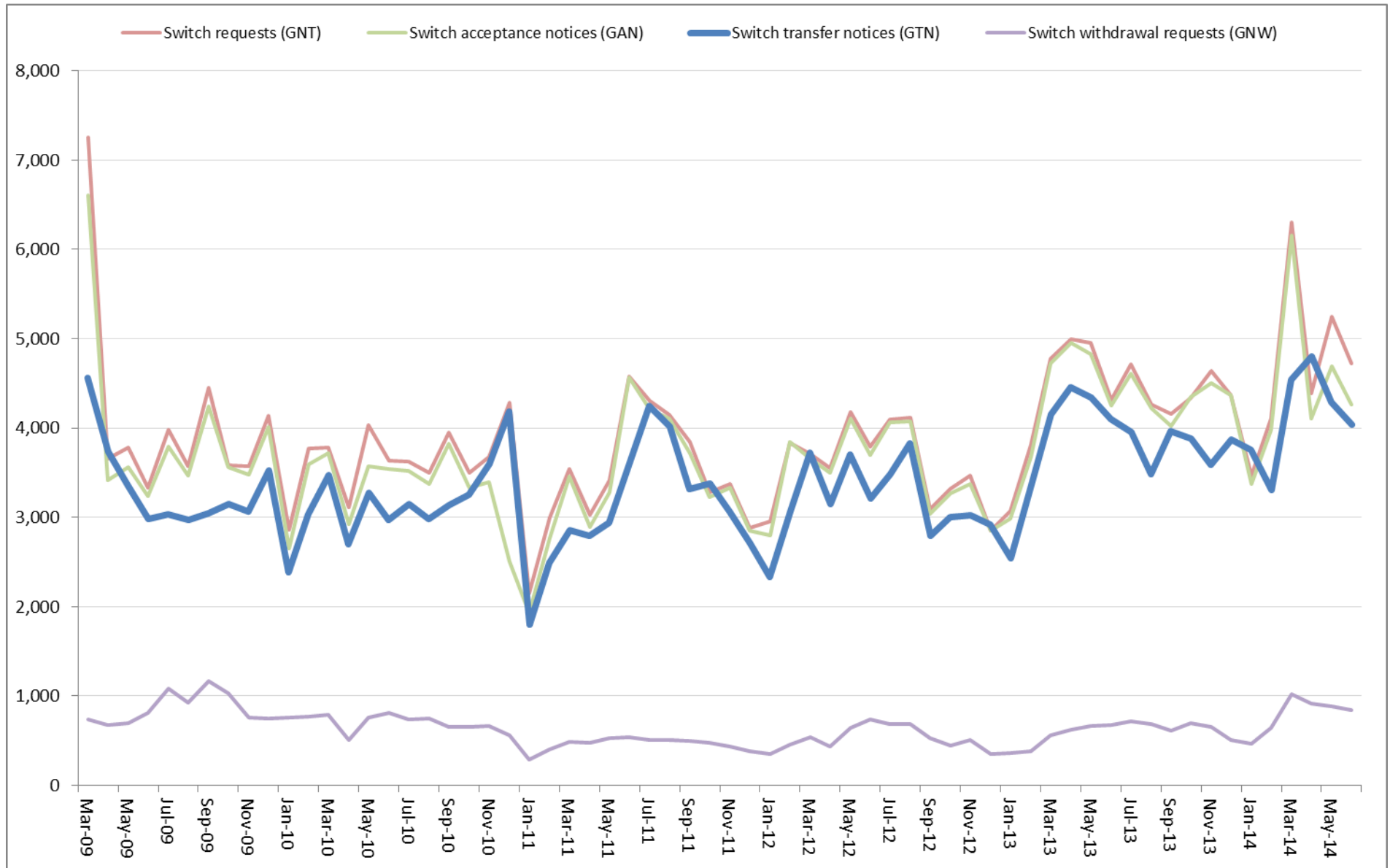
The following report provides statistics and charts illustrating gas registry usage, switching volumes and breakdowns of retailer, distributor and meter owner market shares. The information is provided in accordance with version 1.2 of the Determinations by the Industry Body (Gas Industry Co) under the Gas (Switching Arrangements) Rules 2008, dated 20 February 2009.

## Summary registry statistics – June 2014

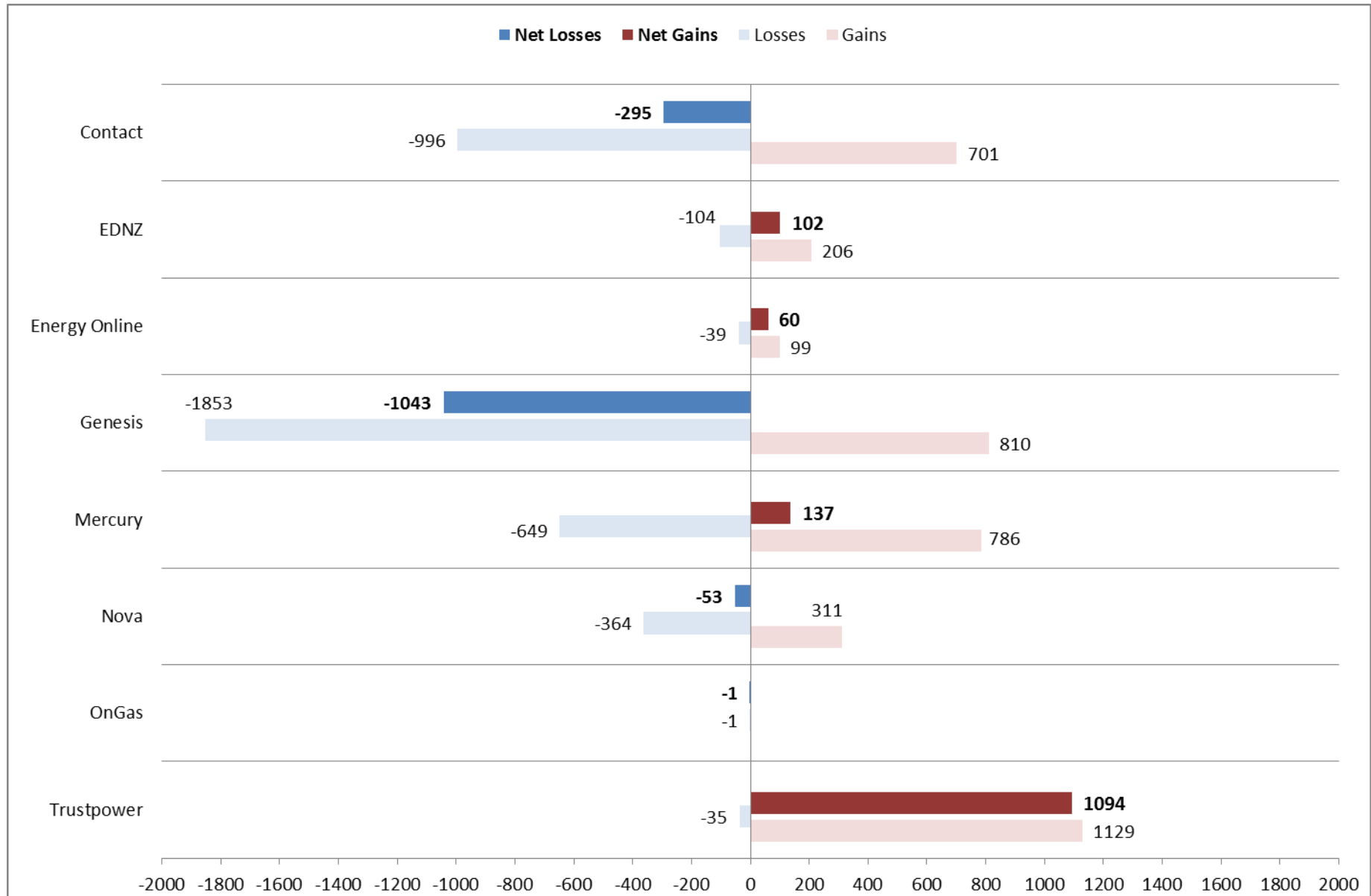
ICP enquiries processed in month (Online)	33,817
ICP enquiries processed in month (Offline)	6,885,990
<b>Total ICP enquiries processed in month</b>	<b>6,919,807</b>
ICPs added to the registry in month	510
ICPs changed in month	1,288
ICPs decommissioned in month	5
Valid standard switch requests (GNT-S) received in month	2,751
Valid move switch requests (GNT-SM) received in month	1,972
<b>Valid switch requests (GNT) received in month</b>	<b>4,723</b>
Valid switch acceptance notices (GAN) received in month	4,261
<b>Valid switch transfer notices (GTN) received in month</b>	<b>4,042</b>
Valid switch withdrawal requests (GNW) received in month	848
Valid switch withdrawal acceptances (GAW-A) received in month	794
Valid switch withdrawal rejections (GAW-R) received in month	25
Valid switch reading renegotiation requests (GNC) received in month	68
Valid switch reading renegotiation acceptances (GAC-A) received in month	59
Valid switch reading renegotiation rejections (GAC-R) received in month	7

Note: A switch transfer notice (GTN) is the last stage required to complete the switching process. This statistic indicates the number of switches completed in the month.

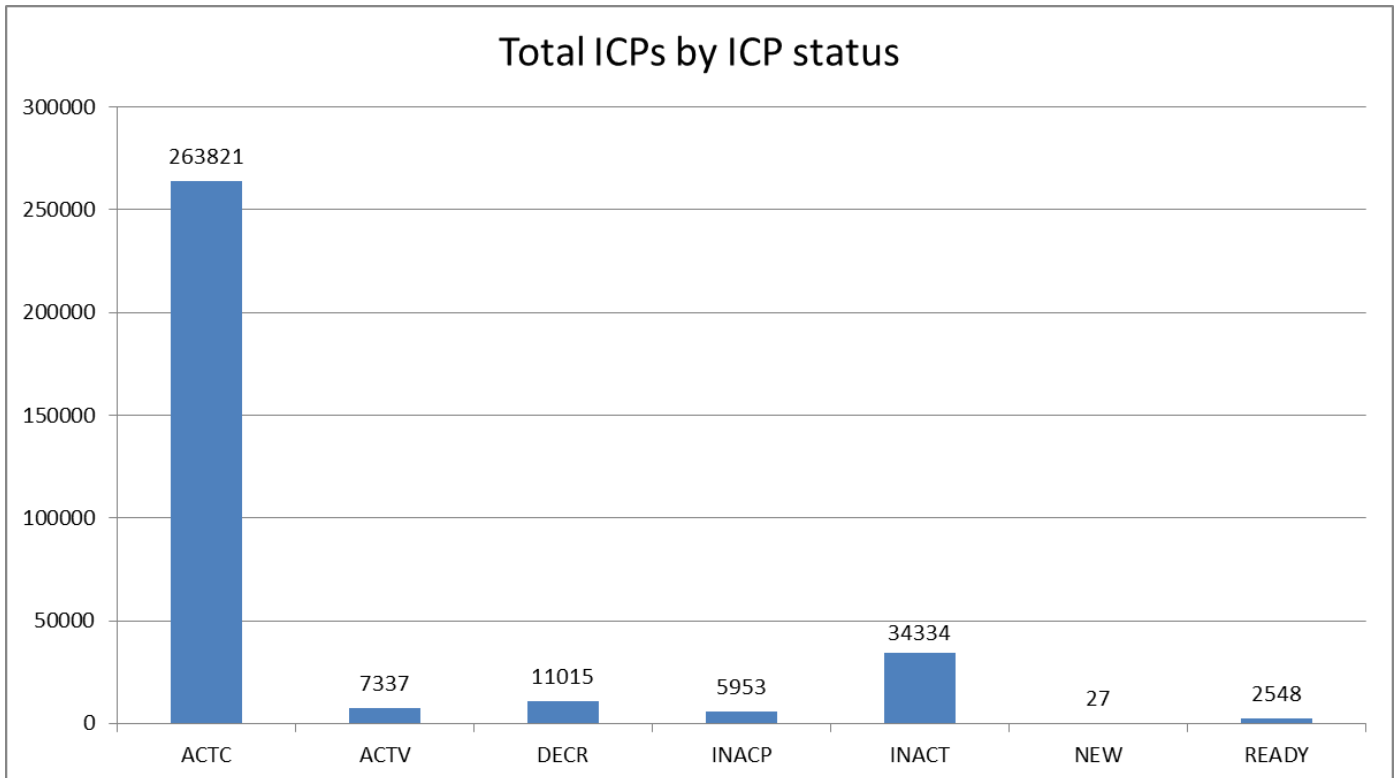
# Switching activity – historical



## Switching gains and losses – June 2014



## ICPs by status – June 2014



Installation control points (ICPs) are the record of customer installations in the gas registry. The meaning of the ICP status codes are as follows:

ACTC—Active contracted (gas is able to flow and the customer has a contract with a retailer)

ACTV—Active vacant (gas is able to flow and the premises is vacant)

DECR—Decommissioned

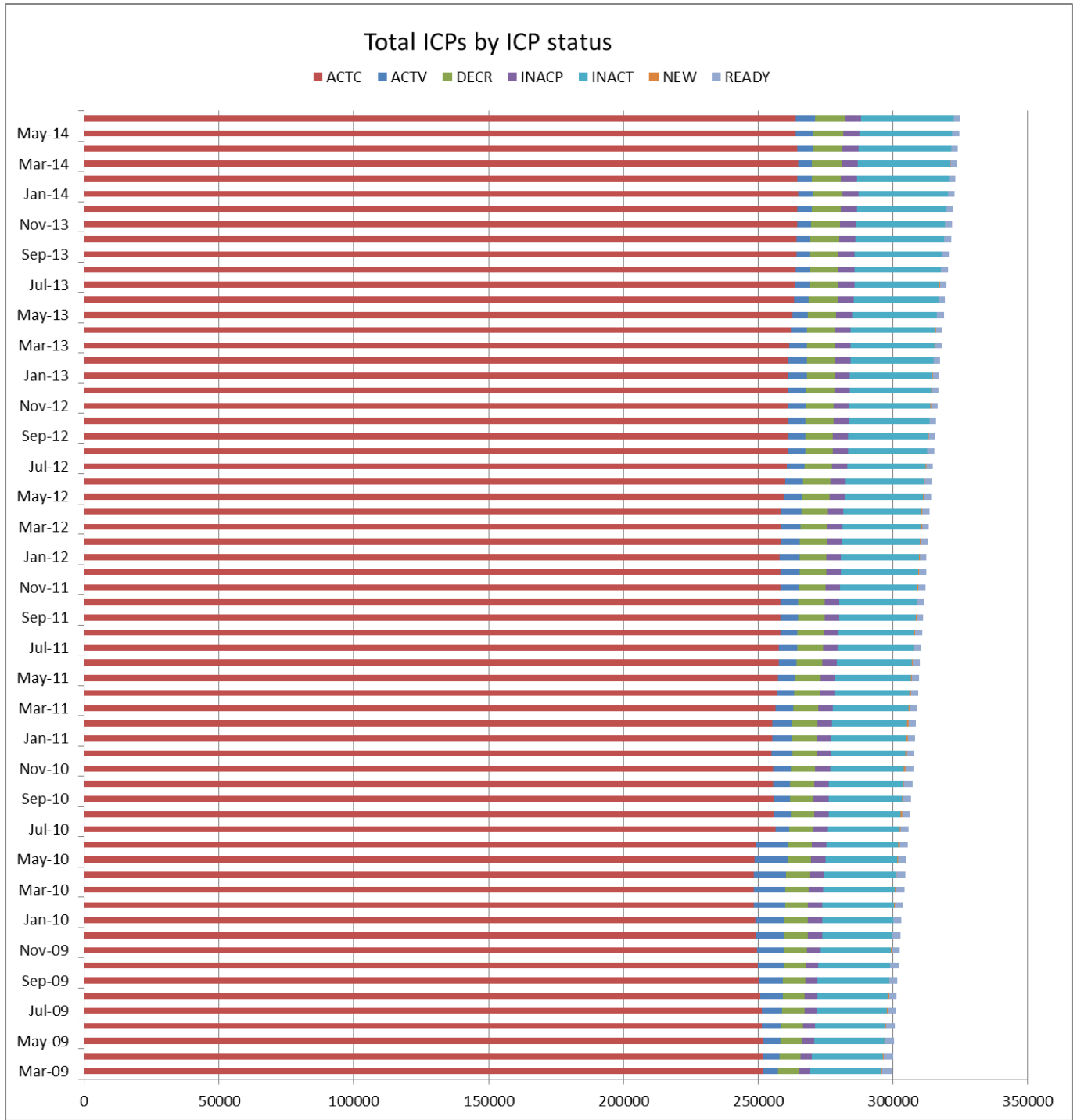
INACP—Inactive permanent (gas unable to flow due to a permanent disconnection)

INACT—Gas unable to flow due to a temporary disconnection

NEW—Newly created ICP, gas not yet able to flow

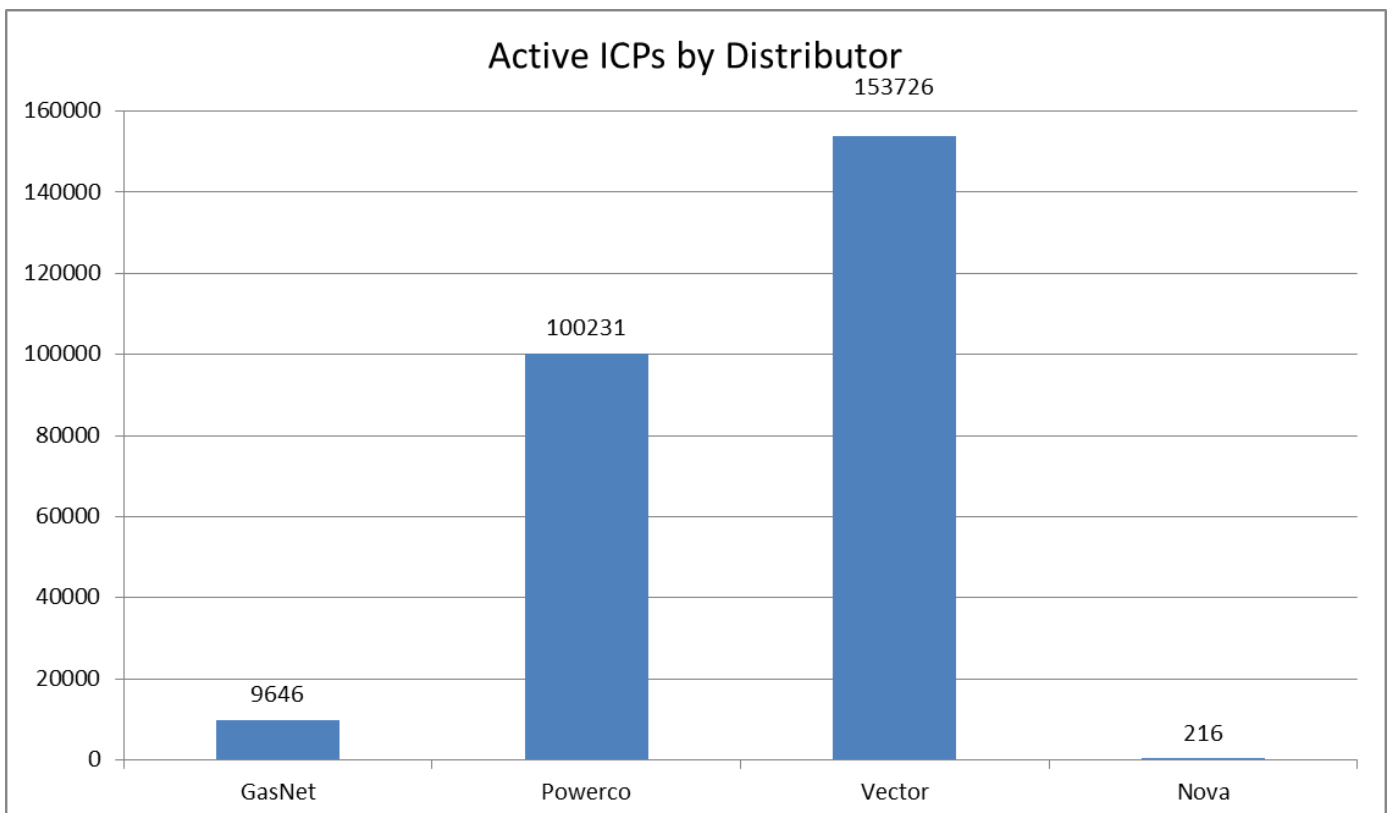
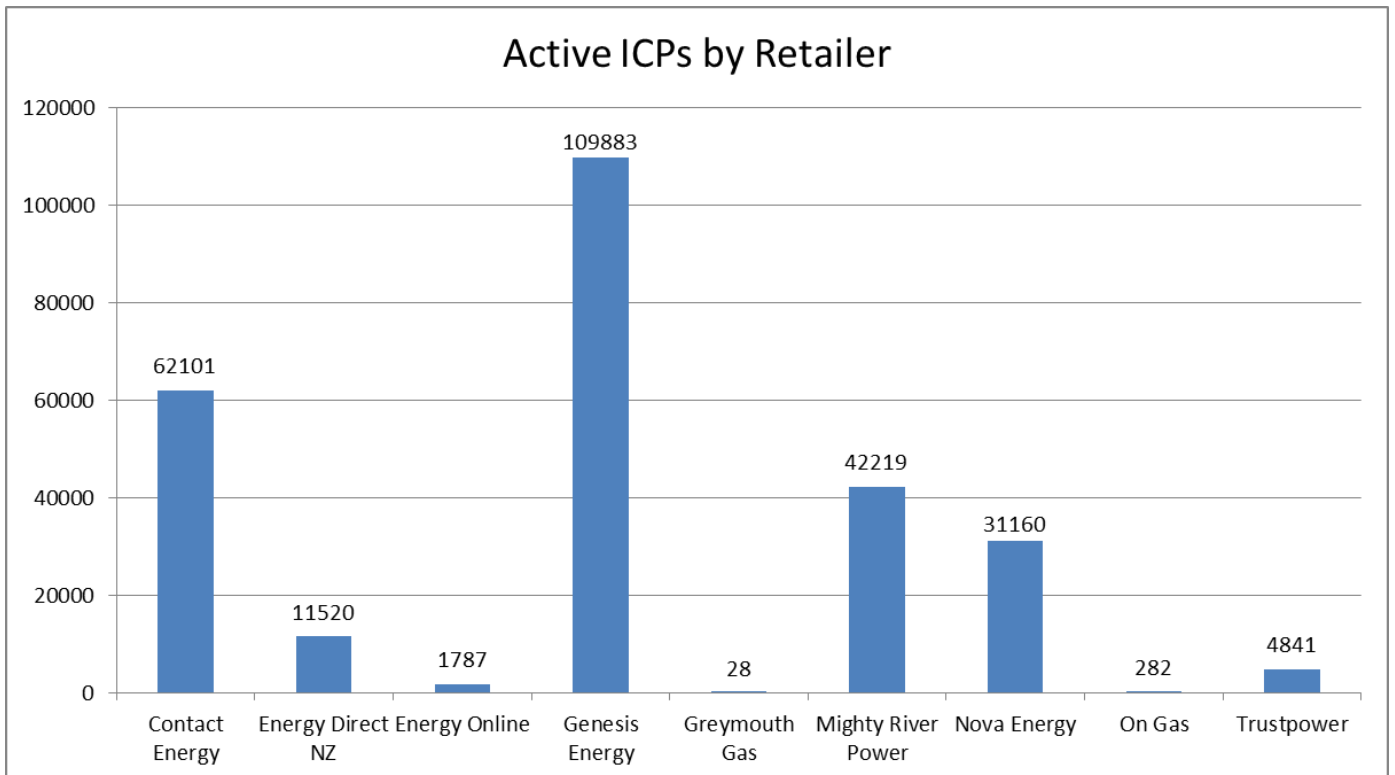
READY—New ICP, gas able to flow, awaiting uplift by retailer

# ICPs by status – Historical

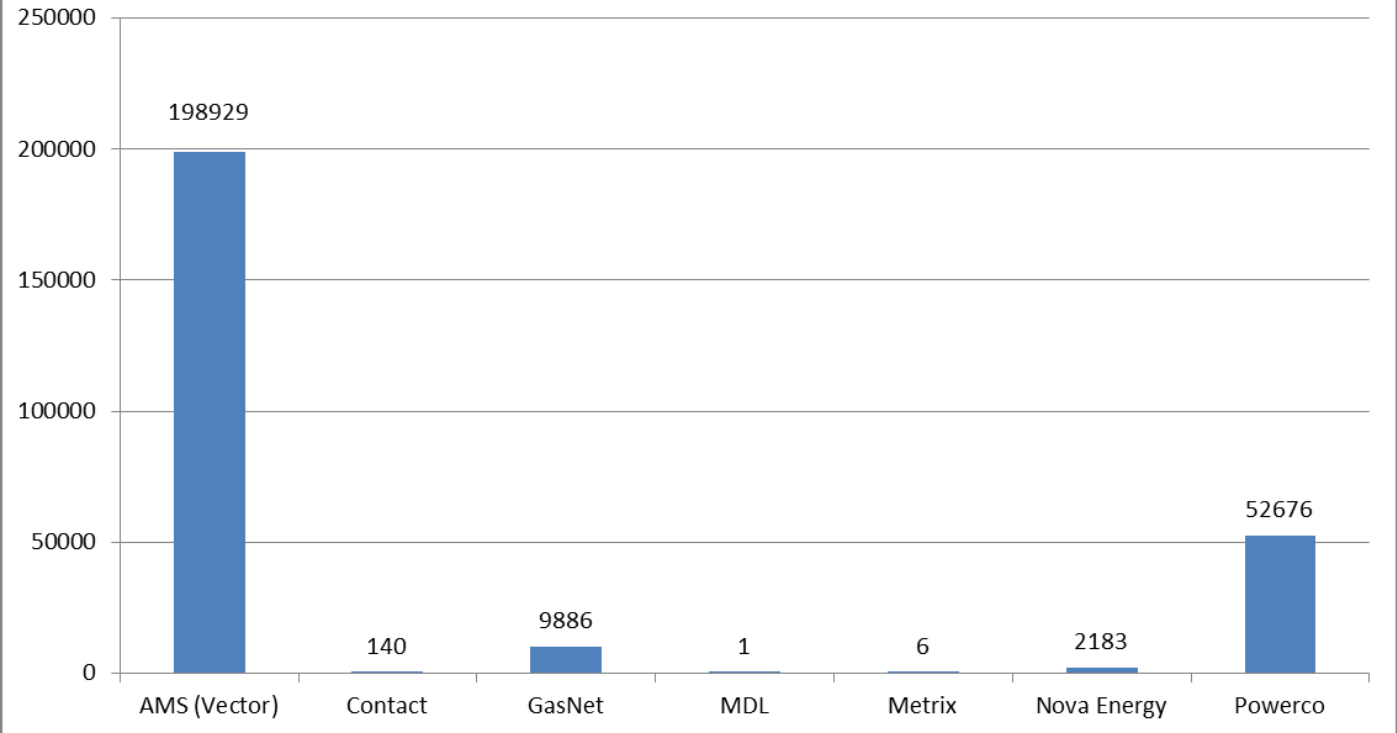


## Market shares – June 2014

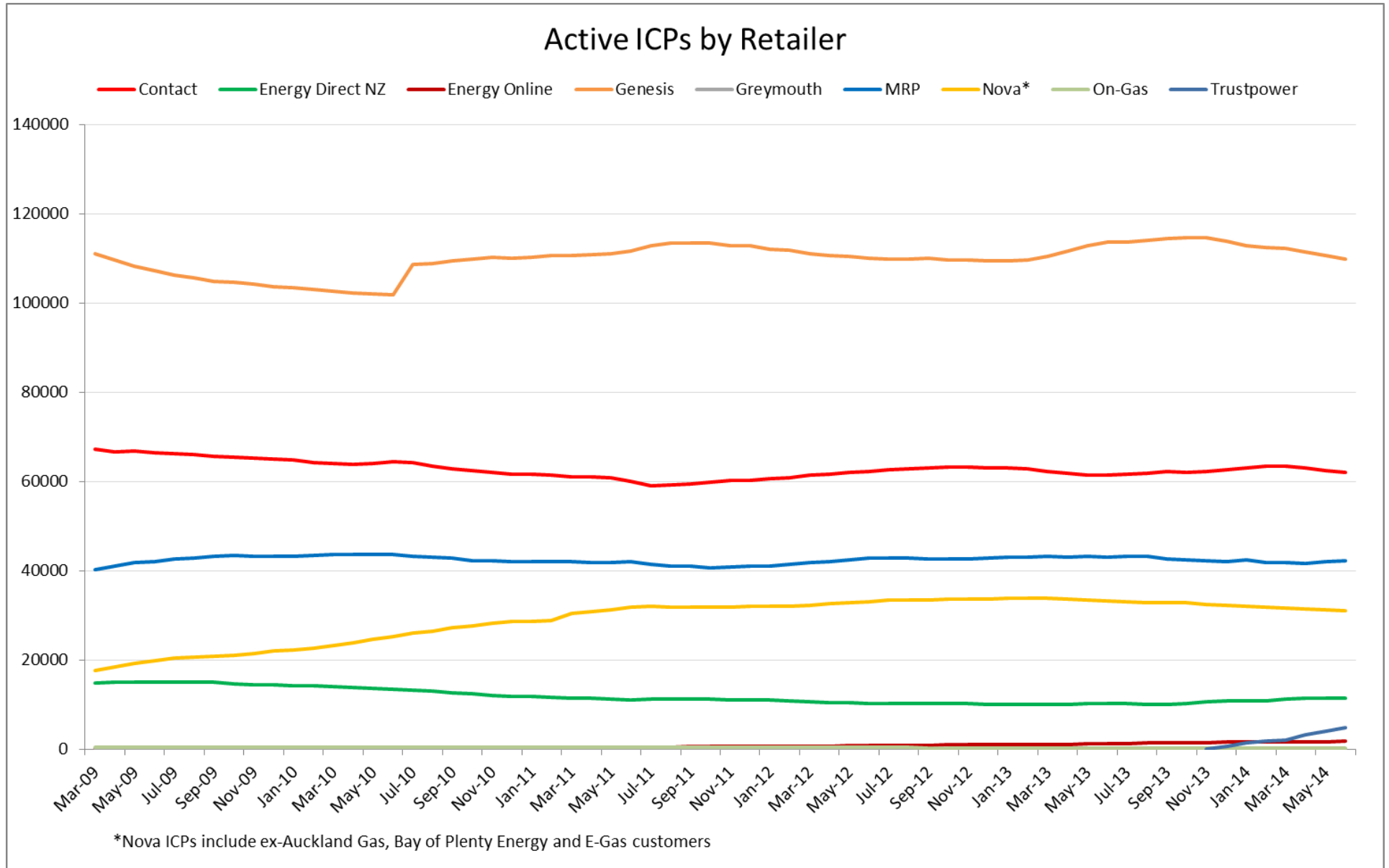
The following charts show the distribution of active-contracted ICPs by retailer, distribution company and meter owner respectively.



### Active ICPs by meter owner



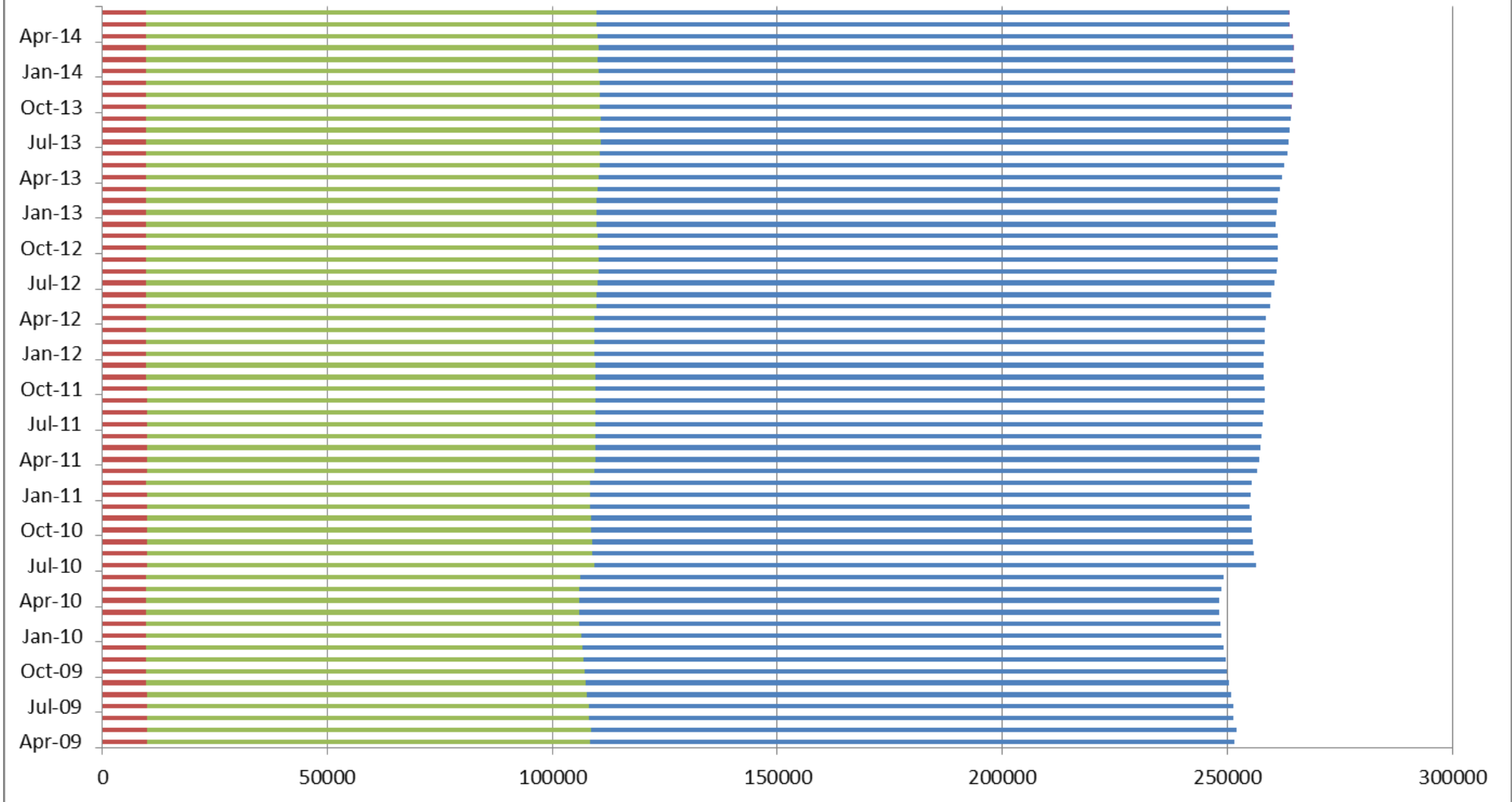
## Market shares – historical





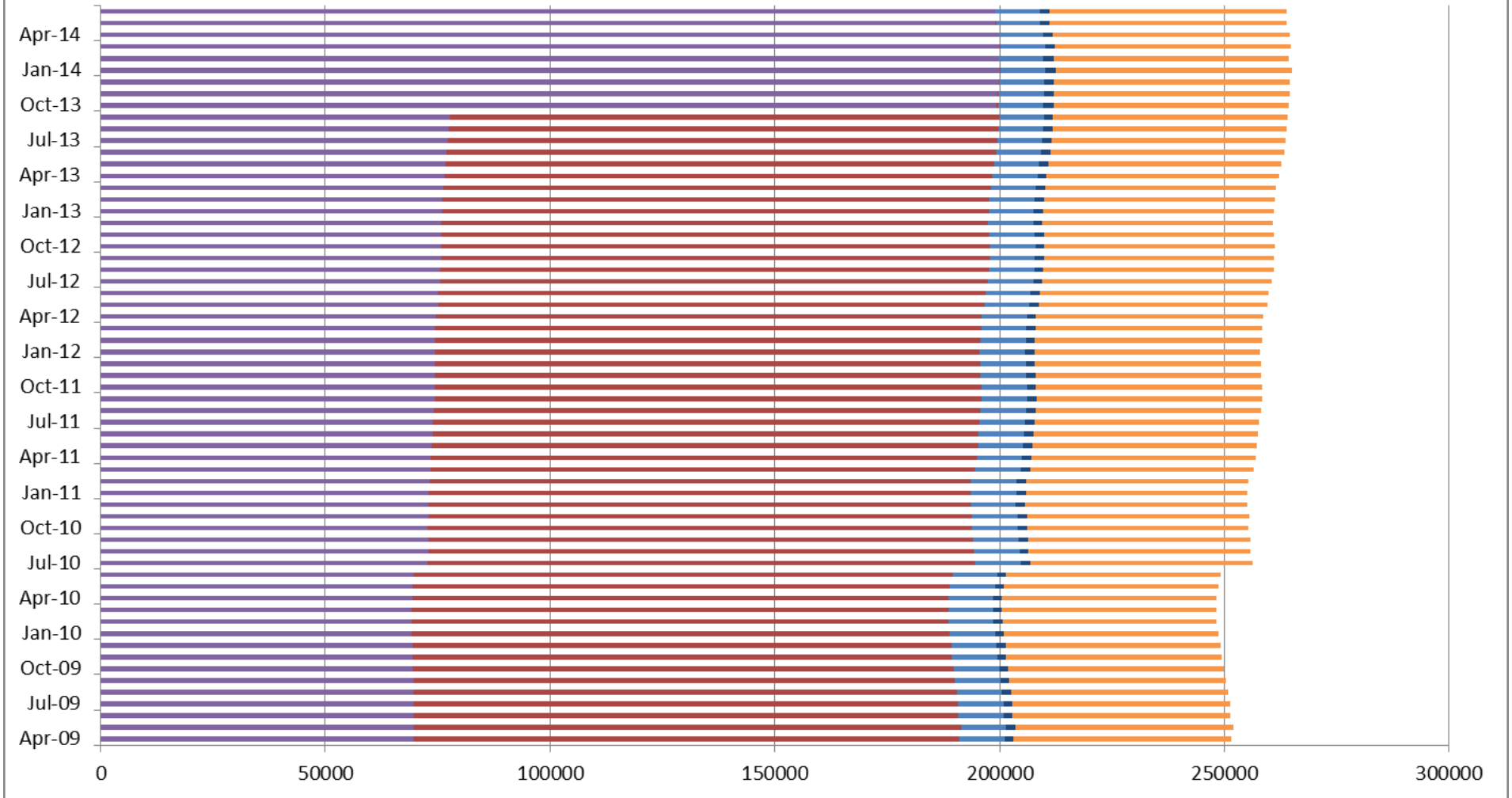
# Active ICPs by Distributor

■ GasNet ■ Powerco ■ Vector ■ Nova



# Active ICPs by Meter Owner

AMS (Vector) Contact GasNet MDL Metrix Nova Energy Powerco



## Active-contracted ICPs by gas gate and retailer – June 2014

The following table shows the distribution of active-contracted ICPs by gas gate, and the distribution by retailer at each gas gate.

The responsible retailer codes are as follows:

CTCT—Contact Energy

EDNZ—Energy Direct NZ (Wanganui Gas)

GEND—Genesis Energy (TOU)

GENG—Genesis Energy

GEOL—Energy Online

GMTH—Greymouth Gas

GNGC—OnGas (Vector)

GNVG—Nova Energy

MEEN—Mercury Energy (Mighty River Power)

TRUS—Trustpower

The gas gate names associated with the codes used in the table can be found here:

[http://gasindustry.co.nz/sites/default/files/u14/20120301\\_all\\_gas\\_gates.pdf](http://gasindustry.co.nz/sites/default/files/u14/20120301_all_gas_gates.pdf)

Gas Gate	CTCT	EDNZ	GEND	GENG	GEOL	GMTH	GNGC	GNVG	MEEN	TRUS	Total
ALF15501							1				1
ASH34301	45	32		59				46	33		215
BAL08201						1					1
BAL09626						1					1
BEL24510	2434	1248	4	14906	50		10	1618	2001	377	22648
BMC17901	535	2	2	650	41		3	226	543	3	2005
BRO36301							1				1
CAM17201	226			1467	15		1	43	131	58	1941
DAN05001	67			9			1	27			104
DRU15101	9			4				9	4		26
DRU15102	26			18	5		5	7	18		79
EGC30701	1							2			3
EGC30702	2			1				3			6
ELM12301	39	18		156			4	82	30		329
FLB15601								27			27
FLD03001	336	178	3	530	3		1	481	144	3	1679
FLH21901	2	2									4
FOX22101	143	5		26	18			74	13		279
GIS07810	1046	177	4	1637			1	242		56	3163
GLB03401							1				1
HAR11801				1			7				8
HEN74101	7046	11	6	8494	204	1	10	1527	5088	110	22497
HPS02993			1								1
HRU16101	1		1	2			1	1			6
HST05203								11			11

Gas Gate	CTCT	EDNZ	GEND	GENG	GEOL	GMTH	GNGC	GNVG	MEEN	TRUS	Total
HST05210	2304	229	2	474	451		9	874	1	8	<b>4352</b>
HTK08301	219	3		1001			2	21	63	60	<b>1369</b>
HTL16601	6		1	87			3	6	4	3	<b>110</b>
HTV11301	2963	7	8	19450			28	471	1698	1017	<b>25642</b>
HUN15301		1	1	1				1			<b>4</b>
HUN15302								2			<b>2</b>
HWA20801	375	165		1320	5		1	560	309	3	<b>2738</b>
HWA20802								1			<b>1</b>
IGW11901	55	60		233	1			176	53	2	<b>580</b>
KAP12901	2			2							<b>4</b>
KAW04405	15	1		94				127	3		<b>240</b>
KAW04410							1				<b>1</b>
KAW04411							1				<b>1</b>
KIG16801	2			1				1	1		<b>5</b>
KIH19101	83		2	1076	14			43	39	38	<b>1295</b>
KIN02601	1			3			2		1		<b>7</b>
KIN04310							1				<b>1</b>
KIW34201						1					<b>1</b>
KIW34202			1	1							<b>2</b>
KKI23701							1	1			<b>2</b>
KPA12401	6	4		36				6	3	1	<b>56</b>
KRG24101		1						2			<b>3</b>
KTK23901			1								<b>1</b>
KUK22401	7			17	1			4			<b>29</b>
KUP37503			1								<b>1</b>
KUR33601							1				<b>1</b>

Gas Gate	CTCT	EDNZ	GEND	GENG	GEOL	GMTH	GNGC	GNVG	MEEN	TRUS	Total
LAB20201	18	49		38				9	2		116
LCF20010	1										1
LNB24301	59	25	2	116	1		3	43	18		267
LVN24401	1405	91	1	463	184		2	509	73	4	2732
MGK05401						1					1
MMU08001	242	1	5	2146		2	2	532	239	990	4159
MNA23402	20	20	1	109				50	33		233
MNG34001			1								1
MRV16301	1										1
MRV16302	78			490				43	75	10	696
MSD01801			1								1
MSD01802							1				1
MTG17301	1			35						1	37
MTN23801	54	168		135	3		1	39	46		446
MTP20601	1			5							6
MUT19001							1				1
NGW14501	28			115				3	3	4	153
NPL12101	1021	1041	2	4636	20		3	3675	767	25	11190
NPS00530	1										1
OKA13201	5	8		24				17	10		64
OKS32801								1	1		2
OKU16701	18	26		105	1			76	36		262
OPK13001	18	8		94	3			29	27		179
OPO32001	8			49				50			107
ORD24701	1	1						1			3
OTA22601	76	7		242	13			32	9	1	380

Gas Gate	CTCT	EDNZ	GEND	GENG	GEOL	GMTH	GNGC	GNVG	MEEN	TRUS	Total
OTB00301	1										1
OTO14101	2			157				12		2	173
PAH23101		1		3							4
PAH23201	6	5		29				2	4	1	47
PAP06604	150		1	88	44			15	124	5	427
PAP06610	4431	7	6	1606	57	2	34	848	3377	14	10382
PAU20101	722	90		2096	81		2	224	73	2	3290
PGH15901				11					3		14
PHT04901	33			37			1	14	4		89
PIR31101	2			38	1				5	2	48
PLN24201	2962	1422	3	4962	36		13	4400	995	3	14796
PPA33201	12			44				11	7	19	93
PTA20901	13	18		102			1	31	18	1	184
PTR32601	41	1		252	1		1	22	22	9	349
PUK04201	55		1	26	24			57	29		192
PYE36601	4							1	1	4	10
RAG33401							1				1
RAM15201	1						2				3
ROT08101	442	53		2200			11	607	472	38	3823
RPR30801	2			18				3	1		24
STR10201	77	58	1	481				239	54	3	913
TAC31001							1				1
TAT16401						1					1
TAU07001	459	26		1104			1	330	119	25	2064
TAW31004	6			41				4	1	3	55
TCC00201	1										1

Gas Gate	CTCT	EDNZ	GEND	GENG	GEOL	GMTH	GNGC	GNVG	MEEN	TRUS	Total
THO22701	3			8	2			2			15
TIR33501	1										1
TIR33502	9			46				13	5		73
TKN17001	2			137				8			147
TKP05101								1			1
TKR19701	115	1		706	1		1	81	48	27	980
TKS17401	2			15		2		2			21
TPK33301	9	1	1	344				67	19	160	601
TRC02003	1										1
TRG07701	247	3	1	2261	1		1	777	210	1058	4559
TTK30601				4				1	1		6
TUK06501	3		1	1				3	4		12
TWA35610	7711	1490	9	10434	81		28	5461	3177	415	28806
TWB24810								175			175
WAG21501	613	4213	1	3259	22	1	7	247	699	17	9079
WAK22801	266	42		996	46			67	19	1	1437
WEL18301	2			15				2	4		23
WHG07501	146	4	2	781			1	99	146		1179
WHK32101	23		1	124			2	278	10	1	439
WKE19201			1								1
WRK18901	41			128			1	22	64		256
WST03610	20820	22	14	10459	294	14	53	4241	19437	115	55469
WTA16501	2		1	30		1	4		1	5	44
WTG06910	729	344	2	4150	29		2	431	506	117	6310
WTK33901	630		1	1375	25		1	74	774	10	2890
WTK33902	158			238	9			56	177	7	645



<b>Gas Gate</b>	<b>CTCT</b>	<b>EDNZ</b>	<b>GEND</b>	<b>GENG</b>	<b>GEOL</b>	<b>GMTH</b>	<b>GNGC</b>	<b>GNVG</b>	<b>MEEN</b>	<b>TRUS</b>	<b>Total</b>
WTR12001	92	130		419			2	401	88	3	<b>1135</b>
WTT20301							1				<b>1</b>
WVY23601	2		1	1					2		<b>6</b>
<b>Grand Total</b>	<b>62101</b>	<b>11520</b>	<b>99</b>	<b>109784</b>	<b>1787</b>	<b>28</b>	<b>282</b>	<b>31160</b>	<b>42219</b>	<b>4841</b>	<b>263821</b>