

Gas Registry Statistics – April 2014

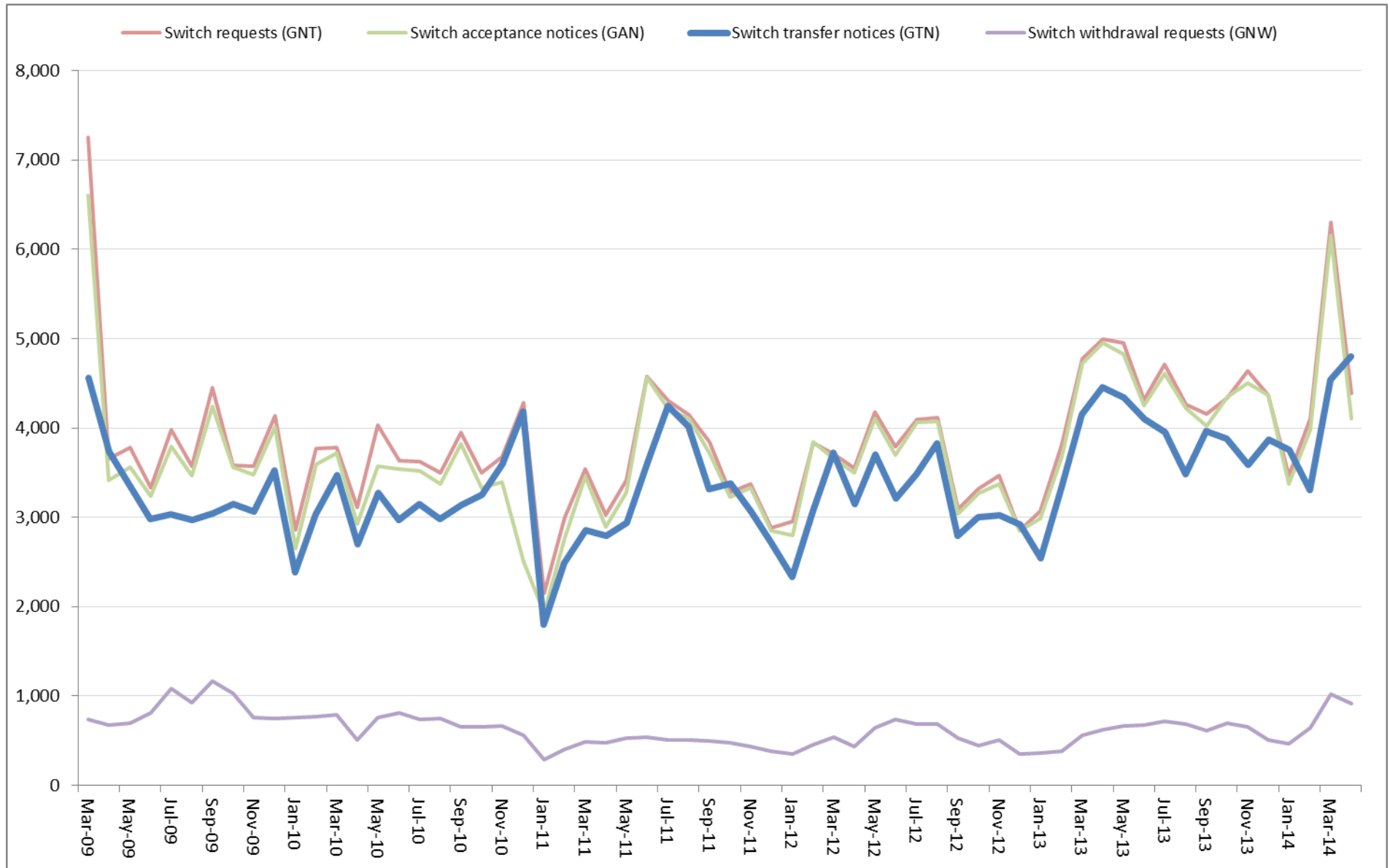
The following report provides statistics and charts illustrating gas registry usage, switching volumes and breakdowns of retailer, distributor and meter owner market shares. The information is provided in accordance with version 1.2 of the Determinations by the Industry Body (Gas Industry Co) under the Gas (Switching Arrangements) Rules 2008, dated 20 February 2009.

Summary registry statistics – April 2014

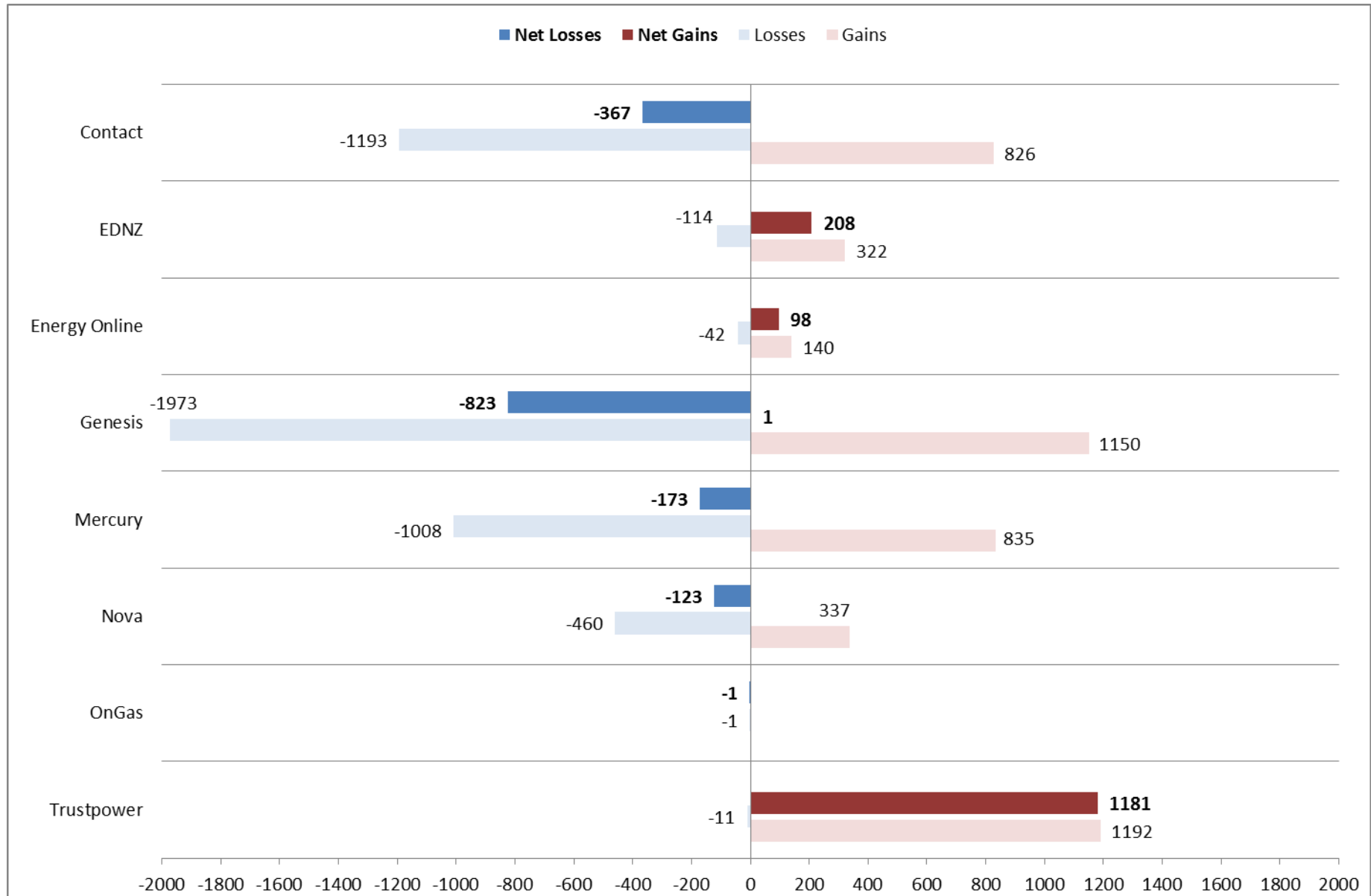
ICP enquiries processed in month (Online)	32,054
ICP enquiries processed in month (Offline)	8,059,454
Total ICP enquiries processed in month	8,091,508
ICPs added to the registry in month	450
ICPs changed in month	1,909
ICPs decommissioned in month	12
Valid standard switch requests (GNT-S) received in month	2,539
Valid move switch requests (GNT-SM) received in month	1,853
Valid switch requests (GNT) received in month	4,392
Valid switch acceptance notices (GAN) received in month	4,110
Valid switch transfer notices (GTN) received in month	4,802
Valid switch withdrawal requests (GNW) received in month	914
Valid switch withdrawal acceptances (GAW-A) received in month	919
Valid switch withdrawal rejections (GAW-R) received in month	19
Valid switch reading renegotiation requests (GNC) received in month	56
Valid switch reading renegotiation acceptances (GAC-A) received in month	42
Valid switch reading renegotiation rejections (GAC-R) received in month	11

Note: A switch transfer notice (GTN) is the last stage required to complete the switching process. This statistic indicates the number of switches completed in the month.

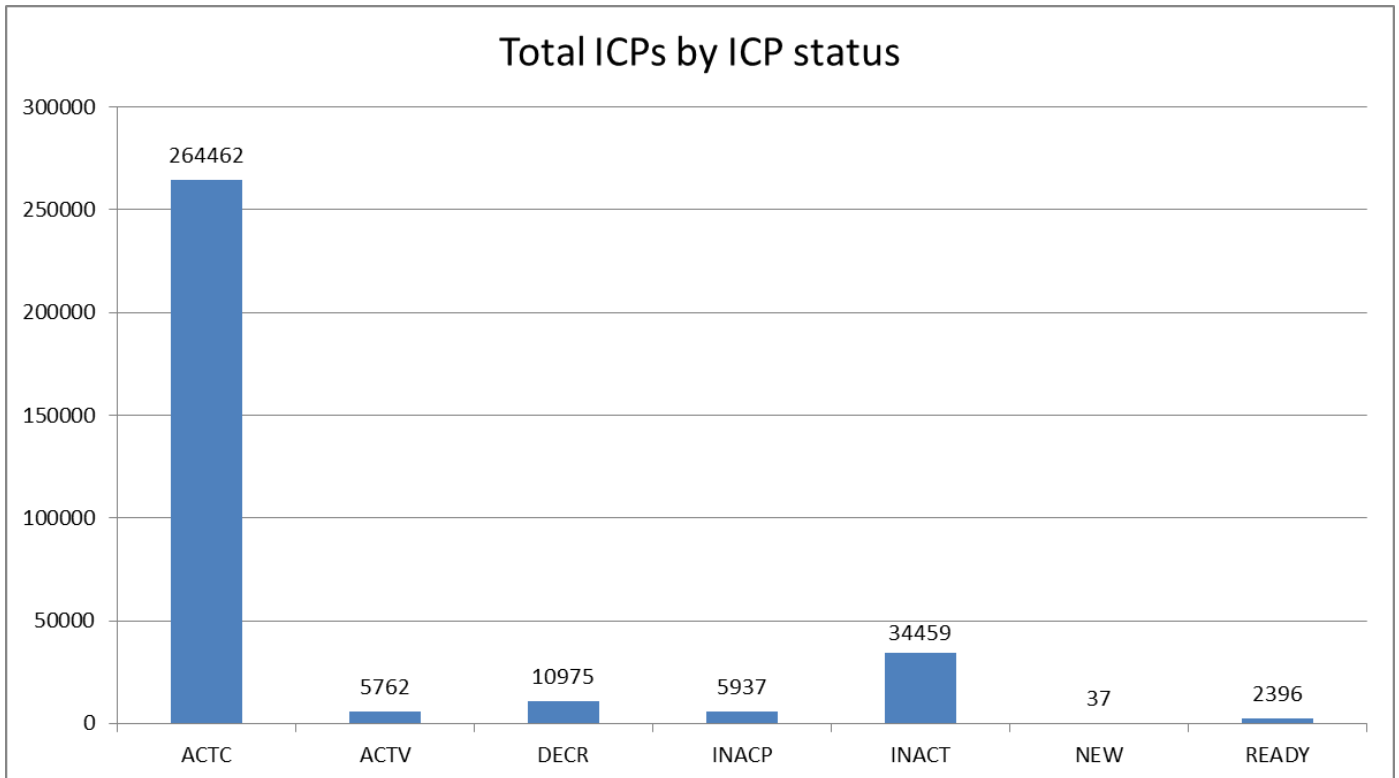
Switching activity – historical



Switching gains and losses – April 2014



ICPs by status – April 2014



Installation control points (ICPs) are the record of customer installations in the gas registry. The meaning of the ICP status codes are as follows:

ACTC—Active contracted (gas is able to flow and the customer has a contract with a retailer)

ACTV—Active vacant (gas is able to flow and the premises is vacant)

DECR—Decommissioned

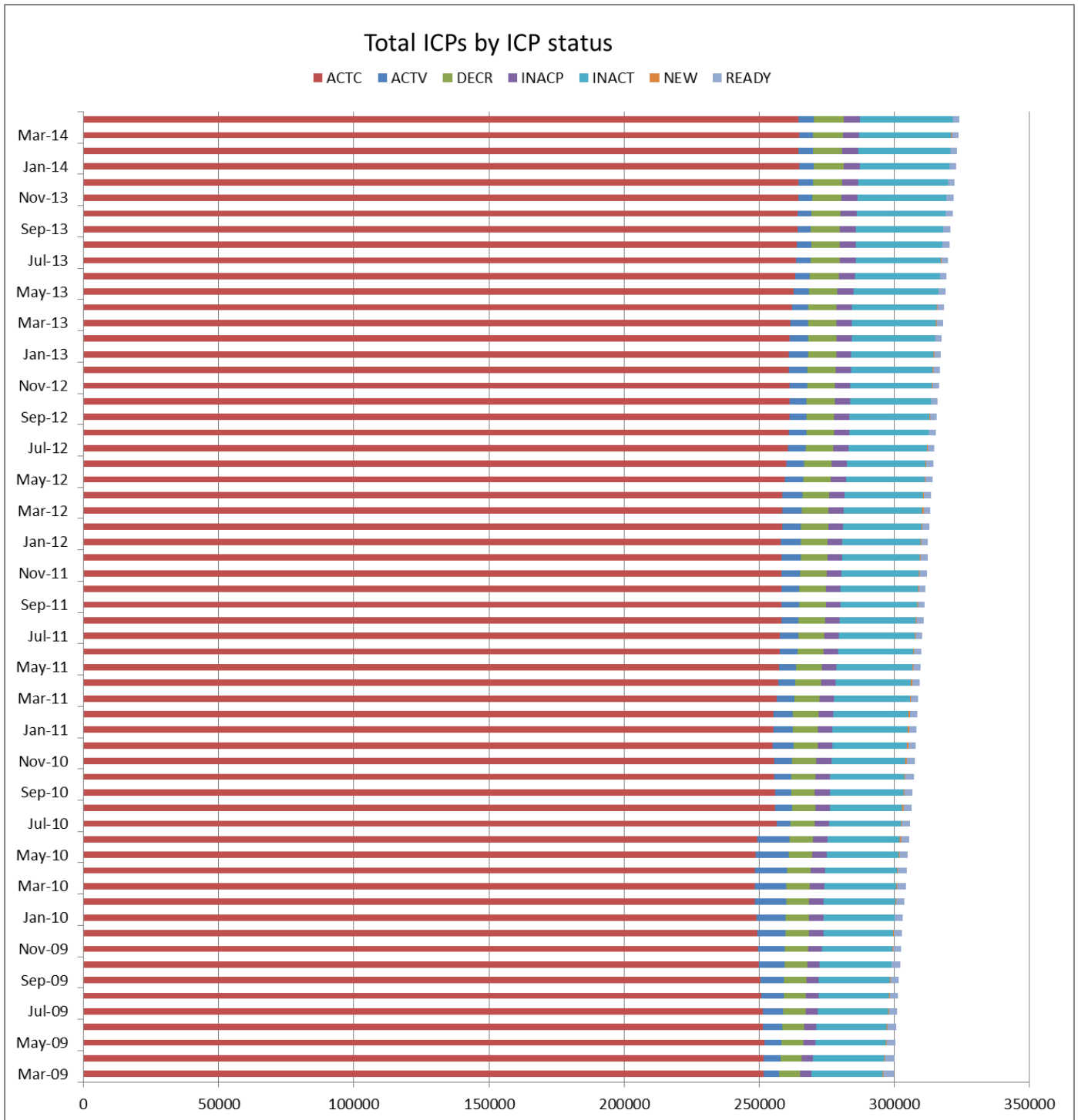
INACP—Inactive permanent (gas unable to flow due to a permanent disconnection)

INACT—Gas unable to flow due to a temporary disconnection

NEW—Newly created ICP, gas not yet able to flow

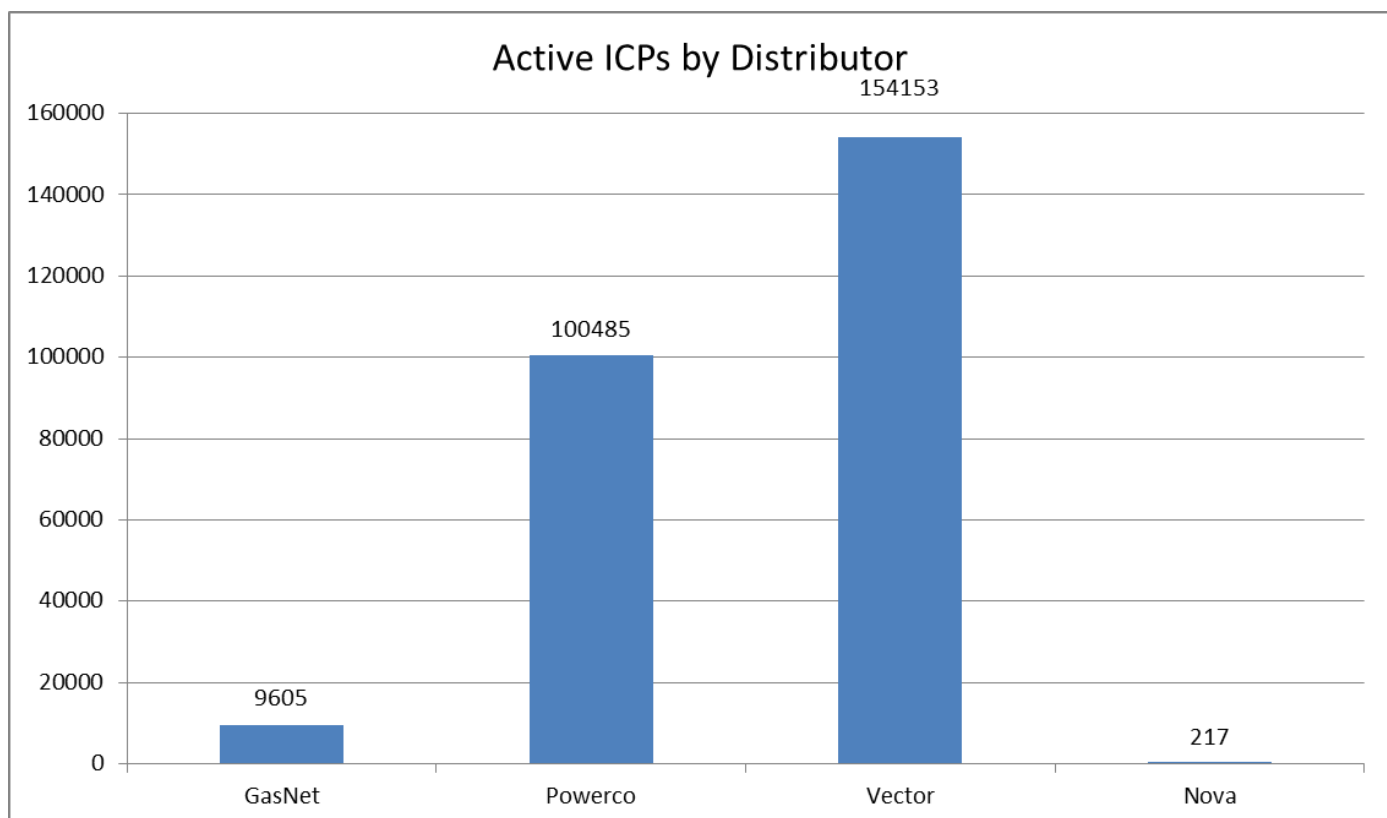
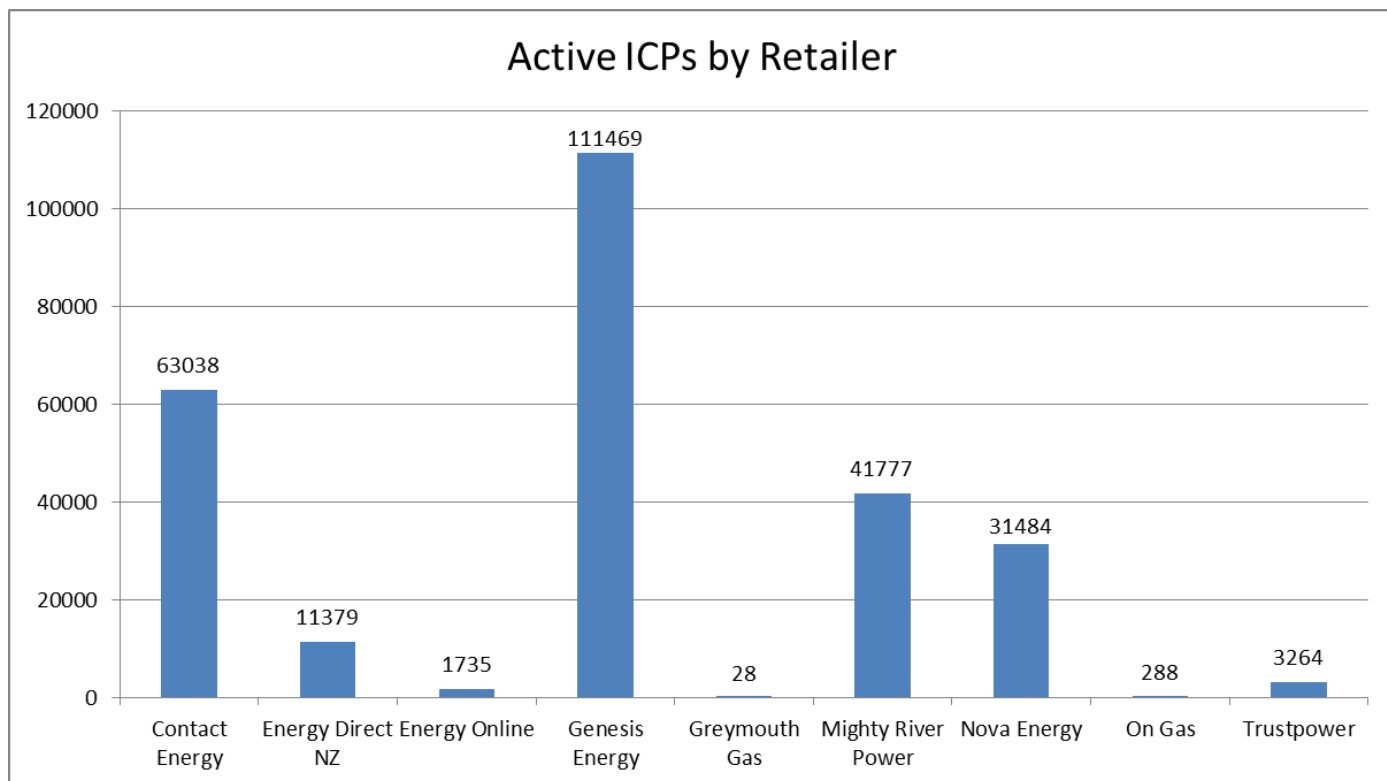
READY—New ICP, gas able to flow, awaiting uplift by retailer

ICPs by status – Historical

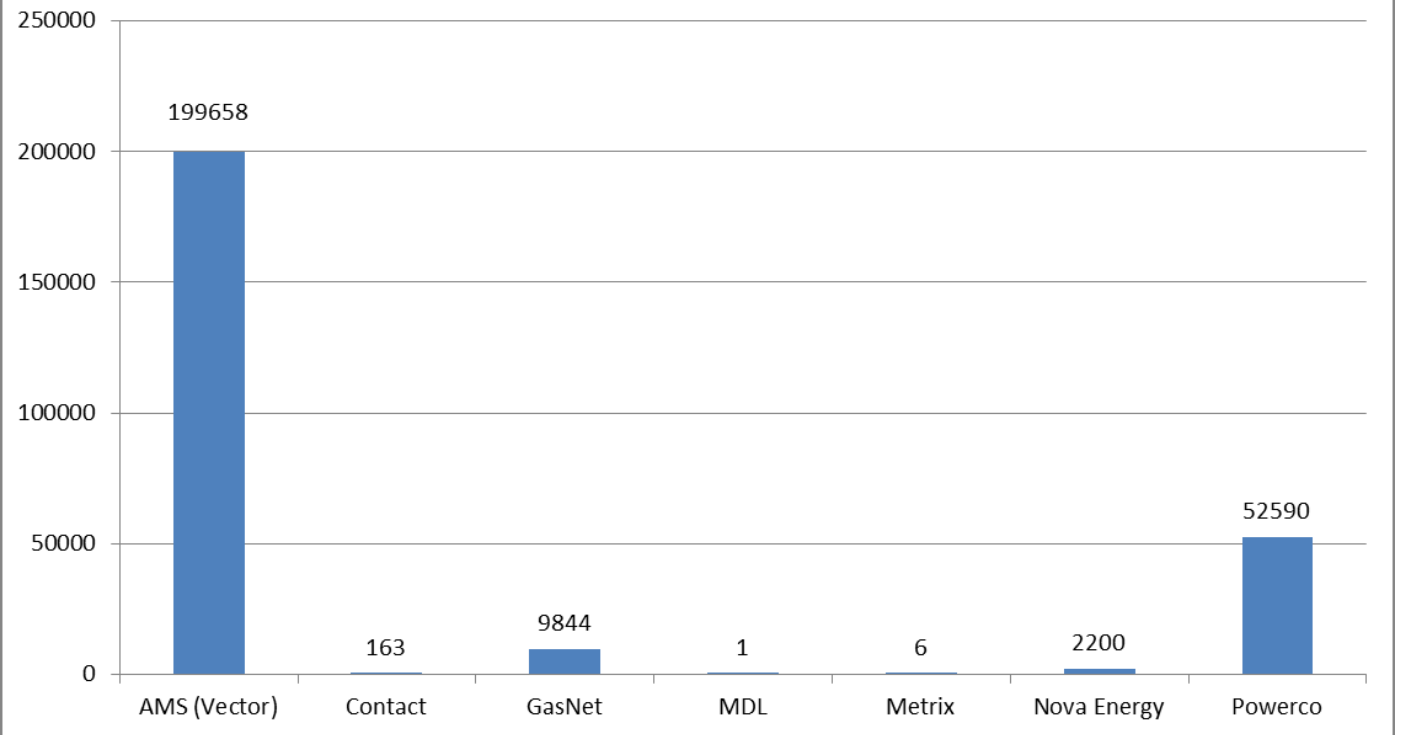


Market shares – April 2014

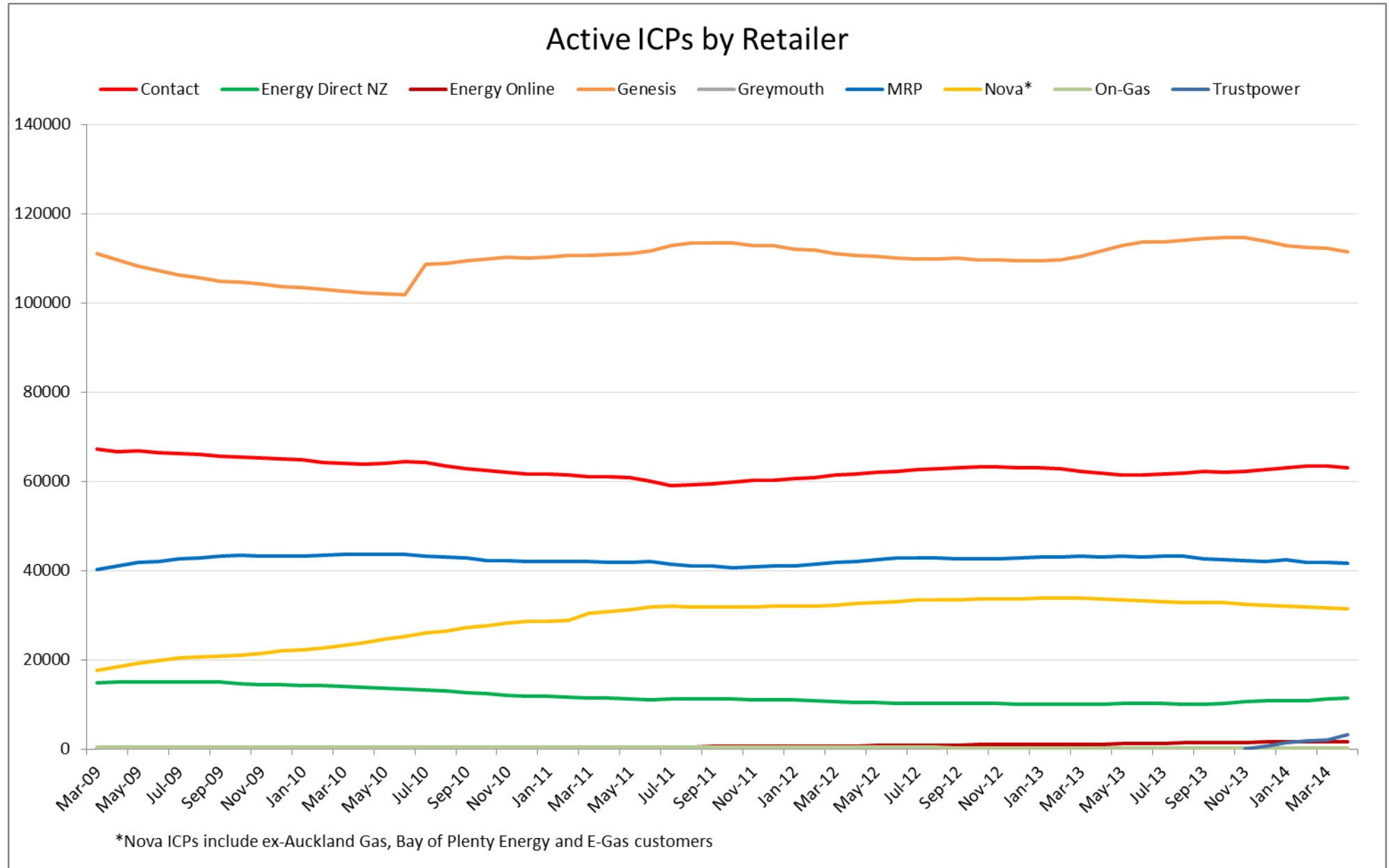
The following charts show the distribution of active-contracted ICPs by retailer, distribution company and meter owner respectively.



Active ICPs by meter owner

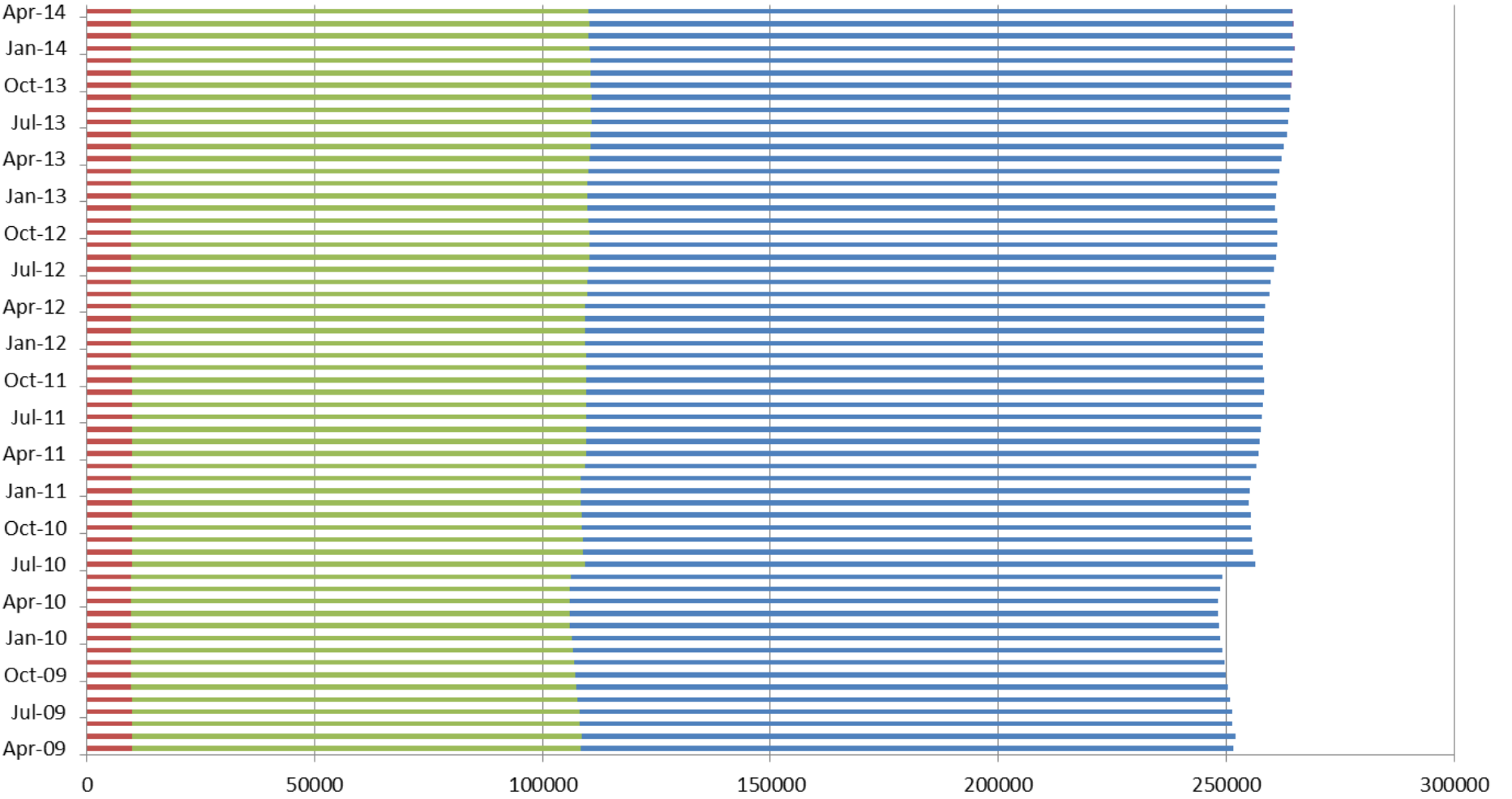


Market shares – historical



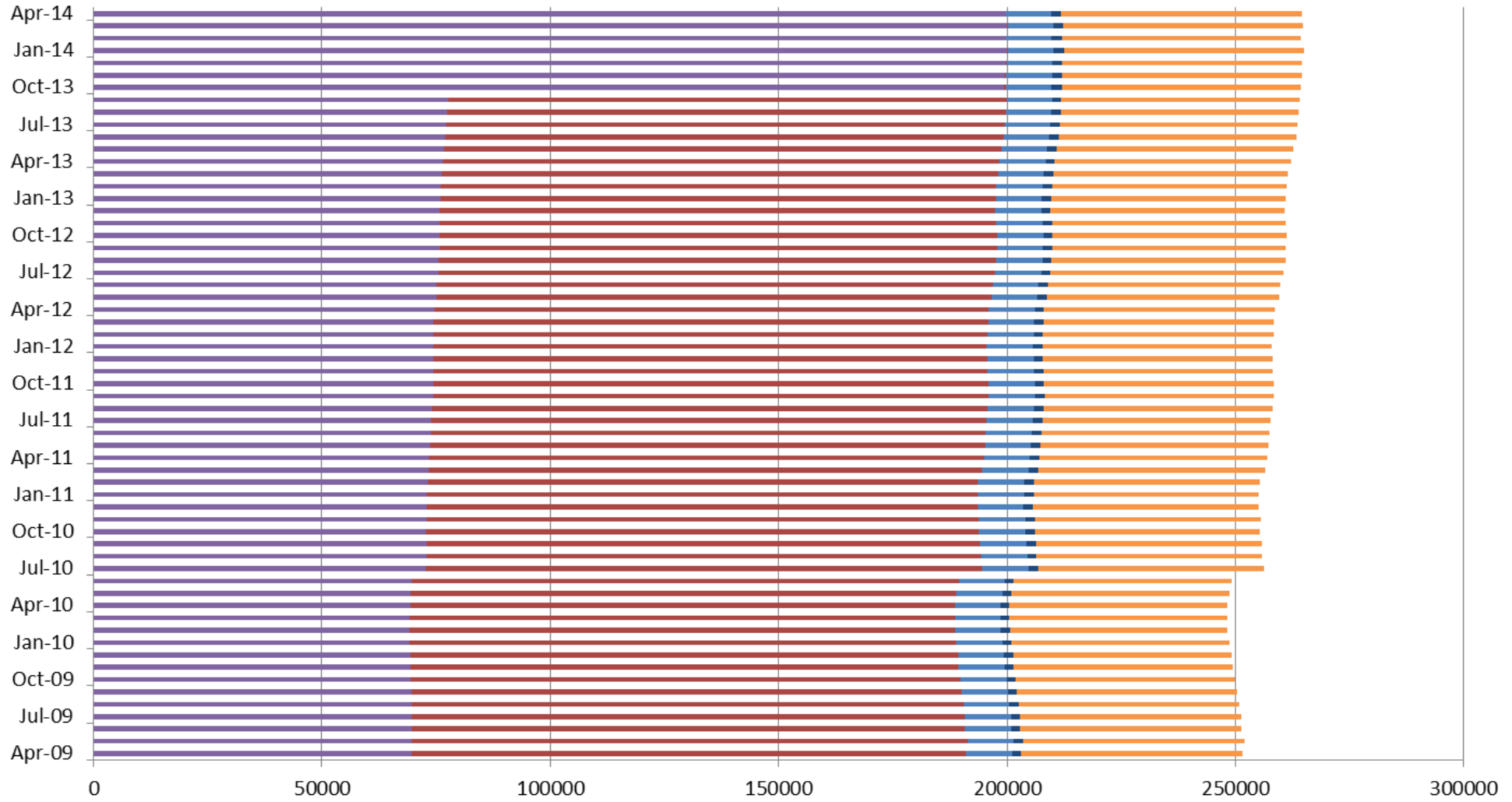
Active ICPs by Distributor

■ GasNet ■ Powerco ■ Vector ■ Nova



Active ICPs by Meter Owner

AMS (Vector) Contact GasNet MDL Metrix Nova Energy Powerco



Active-contracted ICPs by gas gate and retailer – April 2014

The following table shows the distribution of active-contracted ICPs by gas gate, and the distribution by retailer at each gas gate.

The responsible retailer codes are as follows:

CTCT—Contact Energy

EDNZ—Energy Direct NZ (Wanganui Gas)

GEND—Genesis Energy (TOU)

GENG—Genesis Energy

GEOL—Energy Online

GMTH—Greymouth Gas

GNGC—OnGas (Vector)

GNVG—Nova Energy

MEEN—Mercury Energy (Mighty River Power)

TRUS—Trustpower

The gas gate names associated with the codes used in the table can be found here:

http://gasindustry.co.nz/sites/default/files/u14/20120301_all_gas_gates.pdf

Gas Gate	CTCT	EDNZ	GEND	GENG	GEOL	GMTH	GNGC	GNVG	MEEN	TRUS	Total
ALF15501							1				1
ASH34301	50	32		62				45	24		213
BAL08201						1					1
BAL09626						1					1
BEL24510	2474	1160	4	15087	46		10	1655	2043	227	22706
BMC17901	548	2	2	643	39		3	221	541	2	2001
BRO36301							1				1
CAM17201	230			1463	12		1	41	132	40	1919
DAN05001	65			10			1	27			103
DRU15101	8			4				9	5		26
DRU15102	27			17	5		5	6	18		78
EGC30701	1							2			3
EGC30702	2			1				3			6
ELM12301	41	18		157			4	81	30		331
FLB15601								27			27
FLD03001	344	183	3	543	3		1	496	114	2	1689
FLH21901	3	2		1							6
FOX22101	148	5		25	18			77	14		287
GIS07810	1052	186	4	1668			1	228		44	3183
GLB03401							1				1
HAR11801				1			7				8
HEN74101	7111	11	6	8567	196	1	10	1540	5119	5	22566
HPS02993			1								1
HRU16101	1		1	2			1	1			6
HST05203								11			11

Gas Gate	CTCT	EDNZ	GEND	GENG	GEOL	GMTH	GNGC	GNVG	MEEN	TRUS	Total
HST05210	2332	228	2	476	450		9	880	1	6	4384
HTK08301	230	3		991	1		2	21	60	16	1324
HTL16601	6		1	88			3	6	4	1	109
HTV11301	3132	7	7	20213			34	466	1649	309	25817
HUN15301		1	1	1				1			4
HUN15302								2			2
HWA20801	391	164		1318	4		1	562	287	1	2728
HWA20802								1			1
IGW11901	55	59		234	1			181	56		586
KAP12901	2			2							4
KAW04405	15	1		94				127	4		241
KAW04410							1				1
KAW04411							1				1
KIG16801	3			1				1	1		6
KIH19101	82		2	1085	13			42	41	27	1292
KIN02601	1			3			2		1		7
KIN04310							1				1
KIW34201						1					1
KIW34202			1	1							2
KKI23701							1	1			2
KPA12401	6	6		36				6	3		57
KRG24101		1						2			3
KTK23901			1								1
KUK22401	5			17	1			4			27
KUP37503			1								1
KUR33601							1				1

Gas Gate	CTCT	EDNZ	GEND	GENG	GEOL	GMTH	GNGC	GNVG	MEEN	TRUS	Total
LAB20201	18	50		36				8	3		115
LCF20010	1										1
LNB24301	63	29	2	120			3	43	16		276
LVN24401	1406	91	1	472	187		2	520	70	3	2752
MGK05401						1					1
MMU08001	249	1	5	2202		2	2	539	237	930	4167
MNA23402	19	19	1	111				51	33		234
MNG34001			1								1
MRV16301	1										1
MRV16302	81			495				43	74	2	695
MSD01801			1								1
MSD01802							1				1
MTG17301	2			35							37
MTN23801	57	174		140	3		1	37	38		450
MTP20601	1			5							6
MUT19001							1				1
NGW14501	27			120				3	3	1	154
NPL12101	1045	1044	2	4625	18		3	3676	794	7	11214
NPS00530	1										1
OKA13201	5	7		24				17	10		63
OKS32801								1	1		2
OKU16701	18	25		103	1			75	36		258
OPK13001	18	8		101	3			28	21		179
OPO32001	8			49				51			108
ORD24701	1	1						1			3
OTA22601	76	8		242	12			32	9		379

Gas Gate	CTCT	EDNZ	GEND	GENG	GEOL	GMTH	GNGC	GNVG	MEEN	TRUS	Total
OTB00301	1										1
OTO14101	2			159				13		2	176
PAH23101		1		6					1		8
PAH23201	7	5		25				2	3	1	43
PAP06604	156		1	82	44			12	121	3	419
PAP06610	4528	6	6	1632	54	2	34	838	3315	2	10417
PAU20101	720	89		2114	75		2	224	75	2	3301
PGH15901				13					3		16
PHT04901	32			40			1	16			89
PIR31101	4			39					5	1	49
PLN24201	3008	1431	3	4998	35		13	4524	817	1	14830
PPA33201	13			41				10	7	19	90
PTA20901	12	17		105			1	29	16		180
PTR32601	41	1		257	1		1	22	21	4	348
PUK04201	56		1	25	24			58	31		195
PYE36601	4							1	1	4	10
RAG33401							1				1
RAM15201	1						2				3
ROT08101	457	52		2280			11	625	371	27	3823
RPR30801	2			18				3	1		24
STR10201	77	57	1	482				227	57	1	902
TAC31001							1				1
TAT16401						1					1
TAU07001	457	26		1119			1	327	121	20	2071
TAW31004	7			40				4	1	2	54
TCC00201	1										1

Gas Gate	CTCT	EDNZ	GEND	GENG	GEOL	GMTH	GNGC	GNVG	MEEN	TRUS	Total
THO22701	3			8	2			2			15
TIR33501	1										1
TIR33502	9			48				13	4		74
TKN17001	2			136				8			146
TKP05101								1			1
TKR19701	120	1		719	1		1	80	43	7	972
TKS17401	2			15		2		2			21
TPK33301	9	1	1	353				65	20	156	605
TRC02003	1										1
TRG07701	249	3	1	2322			1	784	208	988	4556
TTK30601				4				1	1		6
TUK06501	3		1	1				3	4		12
TWA35610	7816	1395	9	10465	78		28	5590	3206	294	28881
TWB24810								176			176
WAG21501	614	4244	1	3171	19	1	7	255	713	8	9033
WAK22801	268	40		1010	41			68	18	1	1446
WEL18301	2			15				2	4		23
WHG07501	145	4	2	790			1	96	144		1182
WHK32101	23		1	124			2	282	8		440
WKE19201			1								1
WRK18901	42			128			1	21	64		256
WST03610	21051	22	14	10656	289	14	53	4235	19330	10	55674
WTA16501	2		1	35		1	4		2		45
WTG06910	746	328	2	4187	30		2	432	510	84	6321
WTK33901	636		1	1361	21		1	75	770	2	2867
WTK33902	159			243	8			53	177		640

Gas Gate	CTCT	EDNZ	GEND	GENG	GEOL	GMTH	GNGC	GNVG	MEEN	TRUS	Total
WTR12001	85	130		413			2	407	90	2	1129
WTT20301							1				1
WVY23601	2		1	1					2		6
Grand Total	63038	11379	98	111371	1735	28	288	31484	41777	3264	264462